

.100" X .100" LATCH/EJECTOR, STRAIGHT AND RIGHT ANGLE



X3XXX-XXXXXX

UL[®]
US
UL FILE NO: E68080

- 2 PHYSICAL :

INSULATOR:
MATERIAL: GLASS FILLED POLYESTER (PCT)
FLAMMABILITY: UL94V-0
COLOR: BLACK
CONTACT:
MATERIAL: COPPER ALLOY
PLATING:
UNDER PLATING: 100μ" [2.54μm] NICKEL-OVERALL
WIPING AREA: 30μ" [0.76μm] AVG. GOLD
SOLDER TAILS: 200μ" [5.08μm] TIN LEAD OR MATTE TIN (SEE ORDERING INFORMATION)
MARKINGS: 3M LOGO, PART IDENTIFICATION NUMBER AND ORIENTATION TRIANGLE

2 ELECTRICAL :

CURRENT RATING: 5.00A, 1 CONTACT POWERED
3.00A, 6 CONTACTS POWERED
1.75A, ALL CONTACTS POWERED
RATING CONDITIONS: EIA-364-070 METHOD 2, 30°C MAXIMUM
TEMPERATURE RISE, 20% DERATED. REFERENCE APPROPRIATE
3M PRODUCT SPECIFICATION FOR DETAILED CURRENT DERATING
CURVES.

INSULATION RESISTANCE: $>1 \times 10^9 \Omega$ AT 500 V_{DC}
WITHSTANDING VOLTAGE: 1,000V_{RMS} AT SEA LEVEL

2 ENVIRONMENTAL :

TEMPERATURE RATING: -55°C TO 105°C
PROCESS RATING: 260°C, PER J-STD-020C, SINGLE PASS
MOISTURE SENSITIVITY LEVEL: 1 (PER J-STD-020C)

DESIGN REFERENCE		NEXT ASSEMBLY		REV	ECO	ISSUE DATE AND DESCRIPTION		DRFT	CHKD
ACCESS CODES				DRFT	CASTIGLIONE		INFO	DATE	
				CHKD			APPRV.	DATE	
							R. SCHERER	SEP 05, 2014	
DIVISION		DIVISION CODE		<div style="display: flex; align-items: center;"> <div> <p>© 3M COPYRIGHT 2015</p> <p>This document and the information it contains are 3M property and may not be reproduced or further distributed without 3M permission, or used or disclosed other than for 3M authorized purposes. All rights reserved.</p> </div> </div>					
Interconnect Solutions		EMSD							
DO NOT SCALE DRAWING		TOLERANCES EXCEPT AS NOTED							
SCALE 2 1		INCHES		<div style="display: flex; align-items: center;"> <div> <p>3M Center St. Paul, MN 55144</p> </div> </div>					
		.00 .00 ± .01 .000 ± .005 .0000							
THIRD ANGLE PROJECTION		MILLIMETERS							
INTERPRET PER ASME Y14.5 - 2009		.00 ± .13 .00 ± .3 .000		<div style="display: flex; align-items: center;"> <div style="flex: 1;"> <p>TITLE</p> <p>HEADER, 3-WALL, .100 X .100 LATCH/EJECTOR, STRAIGHT & RA</p> </div> <div style="flex: 1; border: 1px solid black; padding: 5px;"> <p>CAGE NUMBER</p> <p>SIZE DRAWING NO.</p> <p>D78-5100-0771-5</p> </div> <div style="flex: 1; text-align: right;"> <p>REV.</p> <p>H</p> </div> </div>					
MAX SURFACE ROUGHNESS		.00 ± .3 .00 ± .3 .000							
<input checked="" type="checkbox"/> UNFINISHED SURFACES <input type="checkbox"/> MARKED ONLY		ANGLES 3000 SERIES DET. <input checked="" type="checkbox"/> YES <input checked="" type="checkbox"/> NO SHT 1 OF 1							

3M™ THREE-WALL HEADER, 3000 SERIES

.100" X .100" LATCH/EJECTOR, STRAIGHT AND RIGHT ANGLE

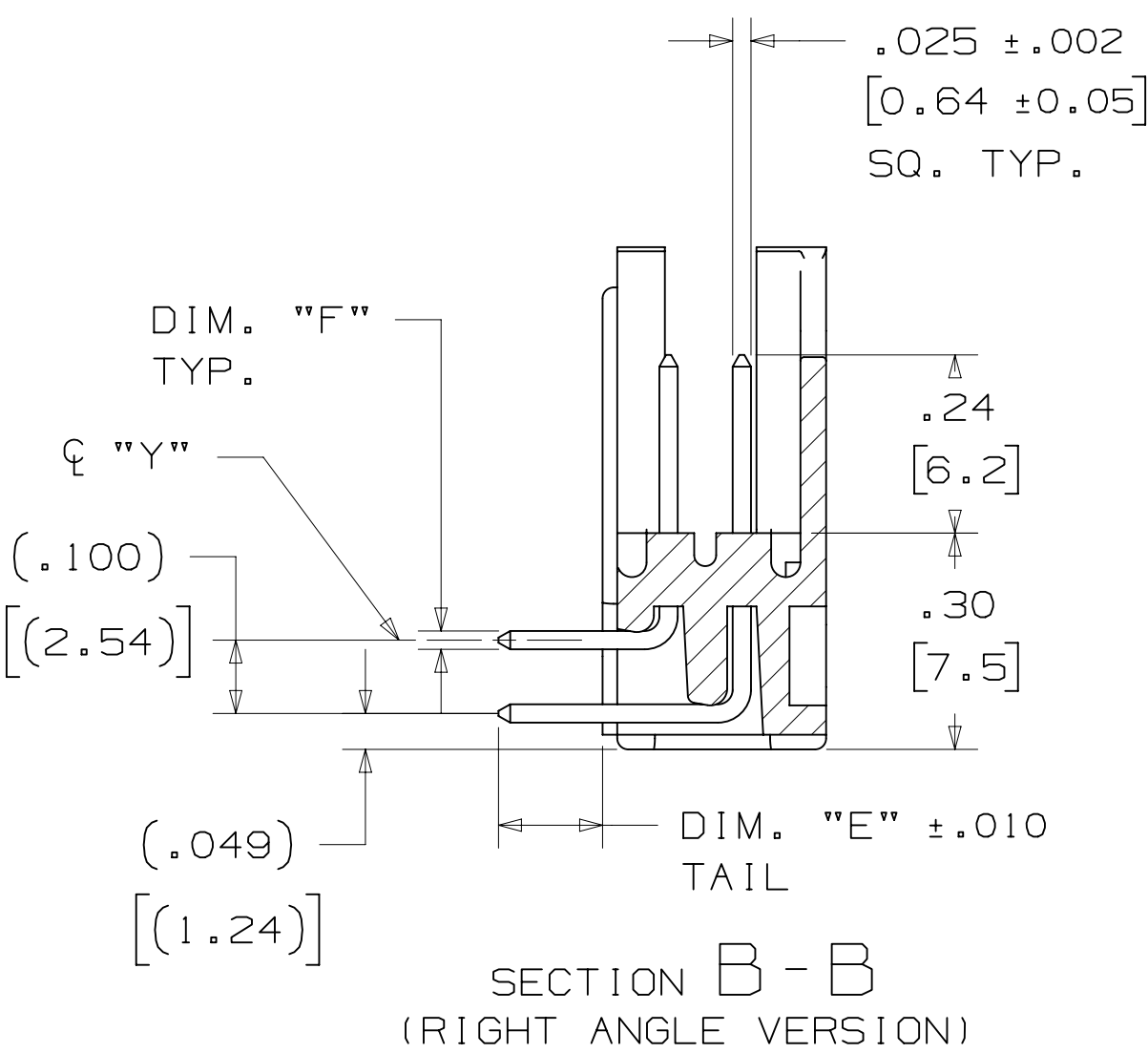
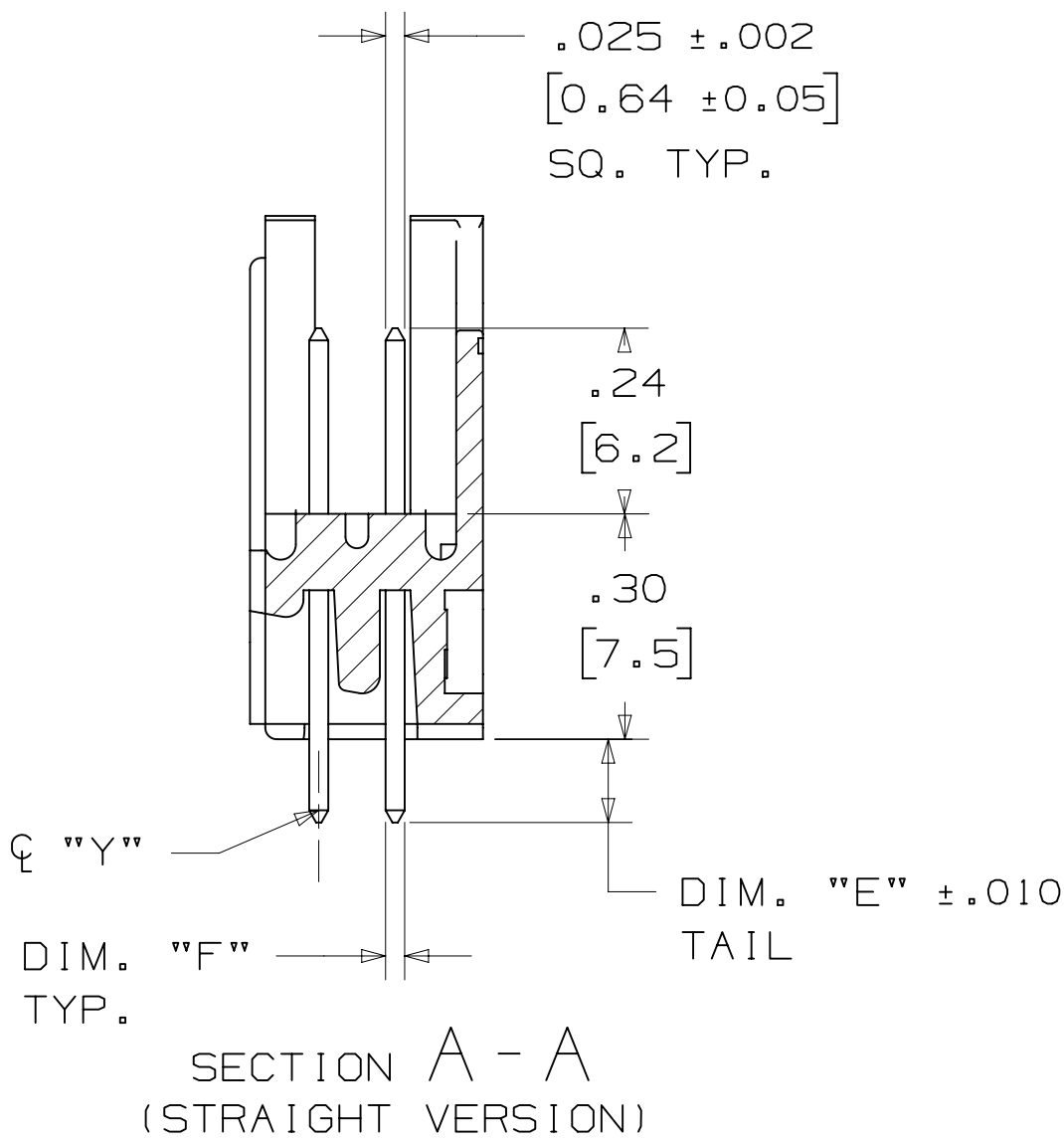
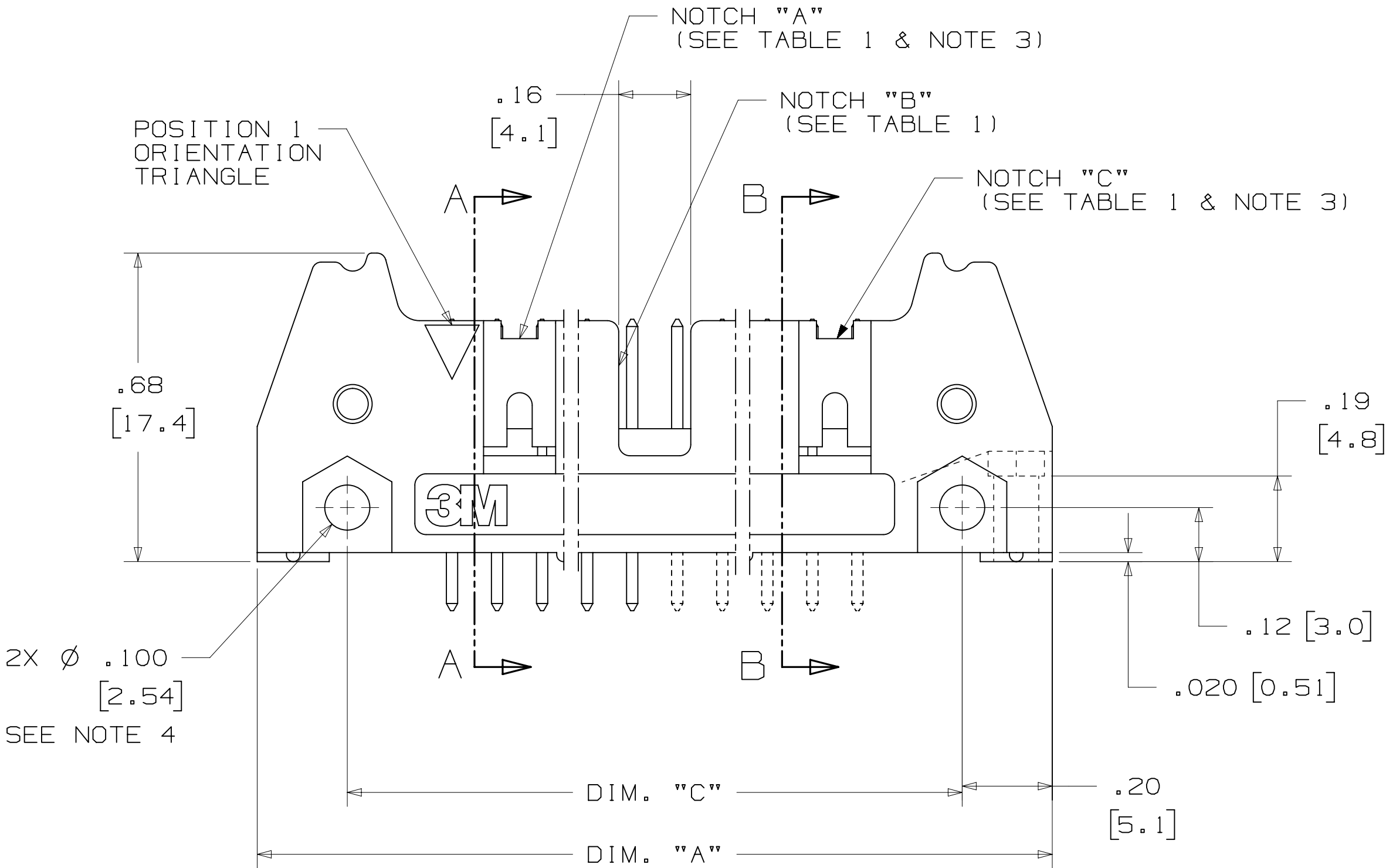
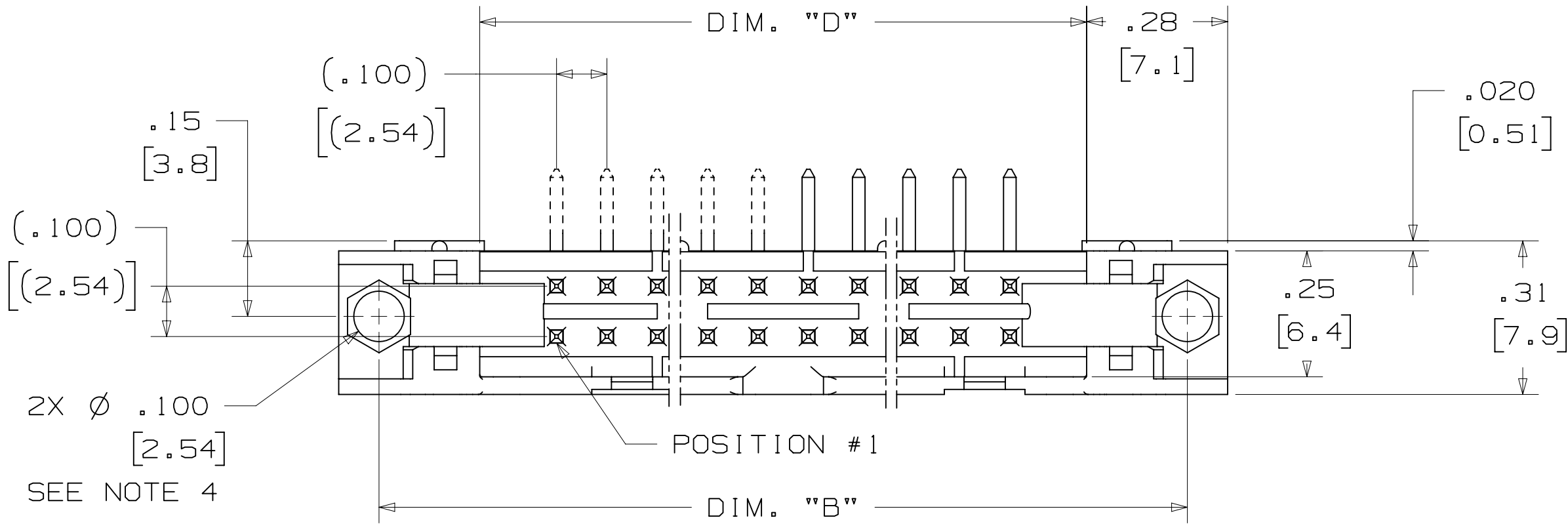


TABLE 1							
PIN QTY.	3M PART NUMBER	DIM. "A"	DIM. "B"	DIM. "C"	DIM. "D"	POLARIZING NOTCHES	PIN QTY.
10	3793	1.26 [32.1]	1.105 [28.04]	.865 [21.97]	.71 [18.0]	BC	10
14	3314	1.46 [37.2]	1.305 [33.12]	1.065 [27.05]	.91 [23.1]	BC	14
16	3408	1.56 [39.7]	1.405 [35.66]	1.165 [29.59]	1.01 [25.6]	ABC	16
20	3428	1.76 [44.8]	1.604 [40.74]	1.365 [34.67]	1.21 [30.7]	ABC	20
26	3429	2.06 [52.4]	1.905 [48.36]	1.665 [42.29]	1.51 [38.3]	ABC	26
34	3431	2.46 [62.6]	2.305 [58.52]	2.065 [52.45]	1.91 [48.5]	ABC	34
40	3432	2.76 [70.2]	2.605 [66.14]	2.365 [60.07]	2.21 [56.1]	ABC	40
50	3433	3.26 [82.9]	3.105 [78.84]	2.865 [72.77]	2.71 [68.8]	ABC	50
60	3372	3.76 [95.6]	3.605 [91.54]	3.365 [85.47]	3.21 [81.5]	ABC	60
64	3764	3.96 [100.7]	3.805 [96.62]	3.565 [90.55]	3.41 [86.6]	ABC	64

TABLE 2						
3M PART NUMBER SUFFIX	CONTACT TAIL	DIM. "E"	PIN CROSS SECTION			DIM. "G"
-1XX2 -2XX2	.062 [1.57] THICK PC BOARD	.112 [2.84]	DIM. "F" .0245+/- .0005 [.622]	DIAGONALS .028+/- .001 [.71]	CORNER RADIUS .0075 REF. [.191]	.035+/- .003 [.89] SEE NOTE 5
-1X03 -2X03	.094 [2.39] TO .125 [3.18] THICK PC BOARD	.155 [3.94]	.0245+/- .0005 [.622]	.028+/- .001 [.71]	.0075 REF. [.191]	.035+/- .003 [.89]



DESIGN REFERENCE
NEXT ASSEMBLY

DO NOT SCALE DRAWING

THIRD ANGLE PROJECTION

MAX SURFACE ROUGHNESS
LISTED SURFACES
MARKED ONLY

INTERCONNECT SOLUTIONS

SCALE 4/1

INTERPRET PER ASME Y14.5 - 2009

TOLERANCES EXCEPT AS NOTED

INCHES
0 ± .01
.000 ± .005
.0000 ±

MILLIMETERS
0 ± .3
.00 ± .13
.000 ±

ANGLES

3M

© 3M COPYRIGHT 2015
3M Center
St. Paul,
MN 55144

THIS DOCUMENT AND THE INFORMATION IT CONTAINS ARE 3M PROPERTY AND MAY NOT BE REPRODUCED OR FURTHER DISTRIBUTED WITHOUT 3M PERMISSION, OR USED OR DISCLOSED OTHER THAN FOR 3M AUTHORIZED PURPOSES. ALL RIGHTS RESERVED.

TITLE
HEADER, 3-WALL, .100 X .100 LATCH/EJECTOR, STRAIGHT & RA

CAGE NUMBER
D78-5100-0771-5

MODEL
3000 SERIES

REV. ECO
ISSUE DATE AND DESCRIPTION
AUG 05, 2014
MFG DATE
AUG 05, 2014
APPROV. R. SCHERER
DATE
SEP 05, 2014

DRFT
CHKD

DATE

DATE

H 60056
MAR 06, 2015
REVISE ORDERING NUMBER

JNC RS

G 56068
AUG 05, 2014
REVISED AND REDRAWN

JNC RS

REV. ECO
ISSUE DATE AND DESCRIPTION
AUG 05, 2014
MFG DATE
AUG 05, 2014
APPROV. R. SCHERER
DATE
SEP 05, 2014

DRFT
CHKD

DATE

DATE

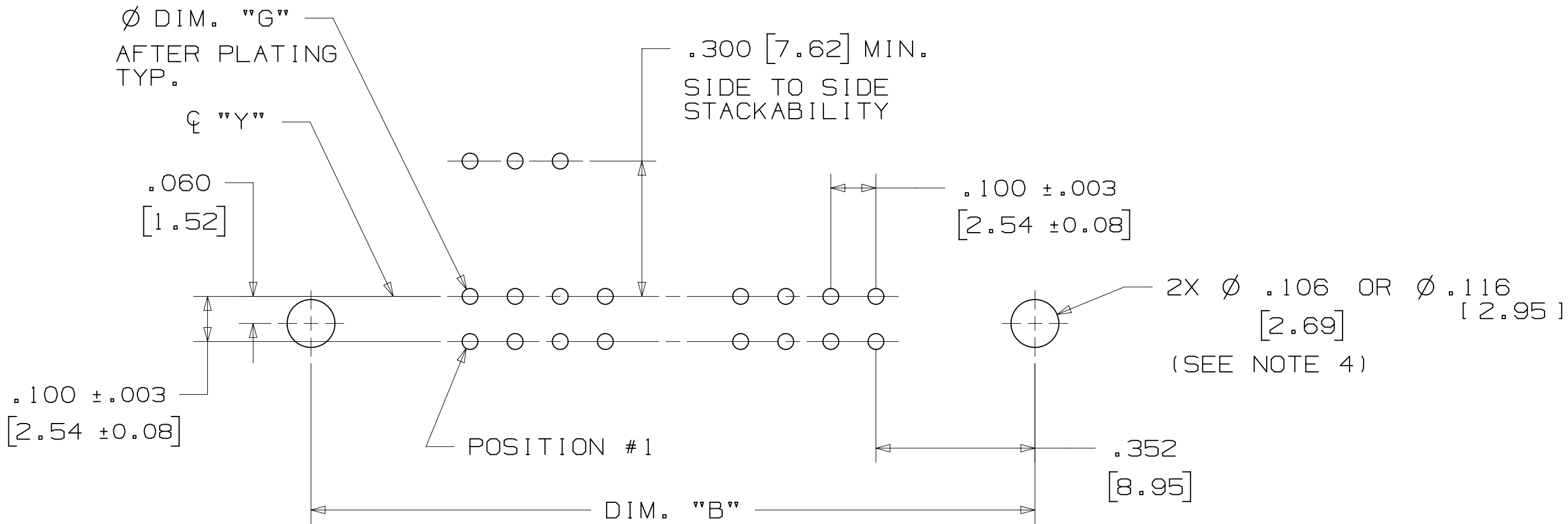
CAGE NUMBER
D78-5100-0771-5

MODEL
3000 SERIES

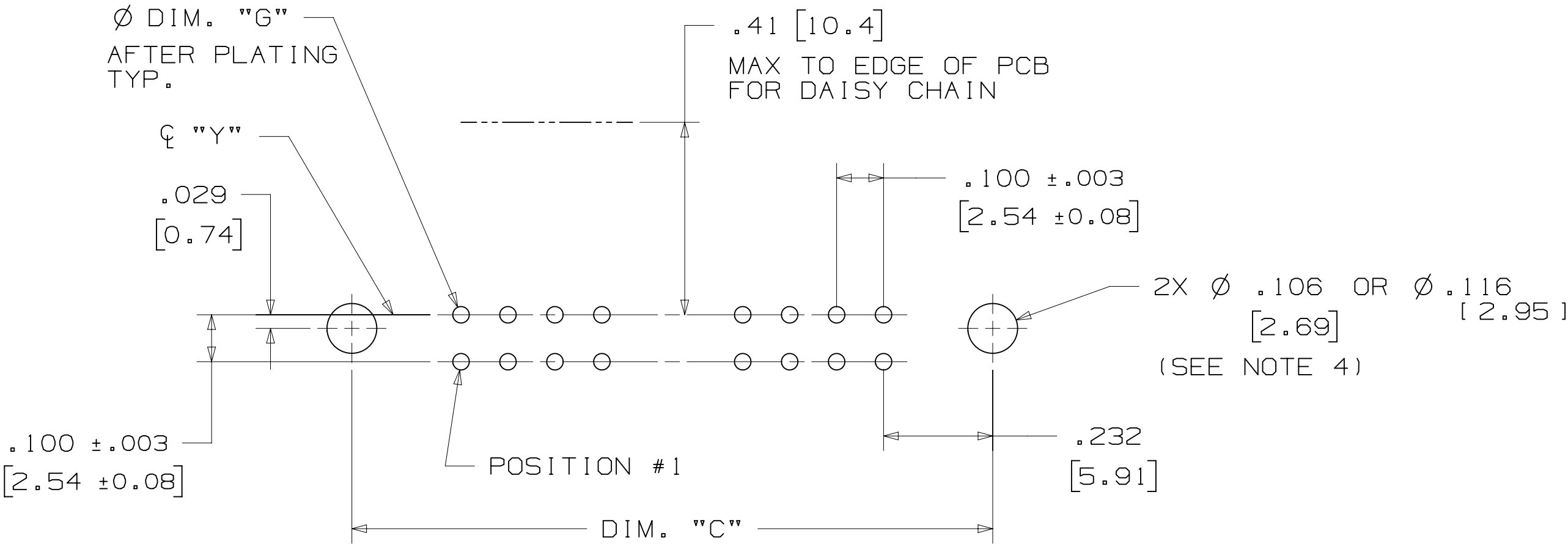
LISTS
YES X NO

SHT 2 OF 4

3M™ THREE-WALL HEADER, 3000 SERIES
.100" X .100" LATCH/EJECTOR, STRAIGHT AND RIGHT ANGLE



RECOMMENDED MOUNTING HOLE PATTERN
(STRAIGHT VERSION)



RECOMMENDED MOUNTING HOLE PATTERN
(RIGHT ANGLE VERSION)

PART CUSTOMIZATION

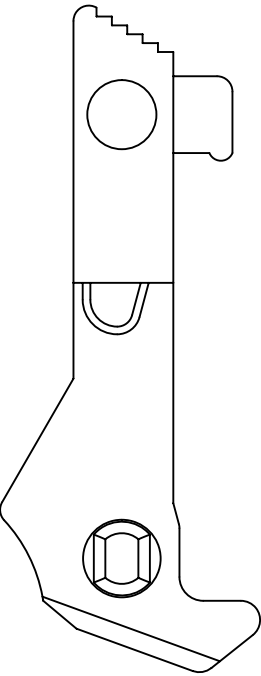
THIS SPEC SHEET DETAILS OUR STANDARD OFFERING.

3M HAS SEVERAL CAPABILITIES THAT CAN PROVIDE A PART TAILORED TO YOUR SPECIFIC NEEDS. ASK YOUR 3M SALES REPRESENTATIVE OR CUSTOMER SERVICE FOR MORE DETAILS.

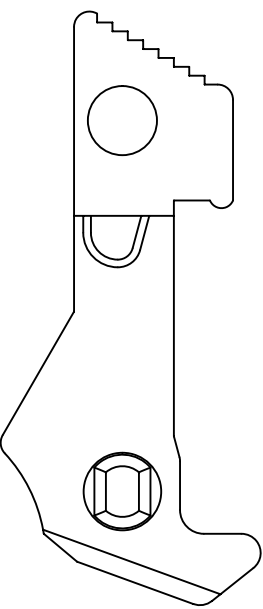
BOTH SNAP-IN AND ROLL PIN LATCHES MAY BE ORDERED SEPARATELY. SNAP-IN AND ROLL PIN STYLE LATCHES ARE DIMENSIONALLY AND FUNCTIONALLY EQUIVALENT. IF ORDERING SNAP-IN OR ROLL PIN STYLE LATCHES SEPARATELY, PLEASE USE THE BELOW CHART.

MATERIAL	SHORT LATCH	LONG LATCH	LATCH STYLE	COLOR
HIGH TEMP. (PCT)	N3505-2B	N3505-3B	ROLL PIN	BLACK
HIGH TEMP (PPA)	N3505-30B	N3505-31B	SNAP-IN	BLACK

- * SELECTIVE PIN REMOVAL (ATA OR OTHER COMPATABILITY)
- * WIRE WRAP TAILS STYLE

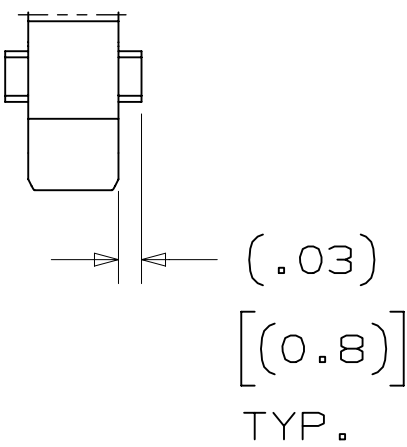


LONG



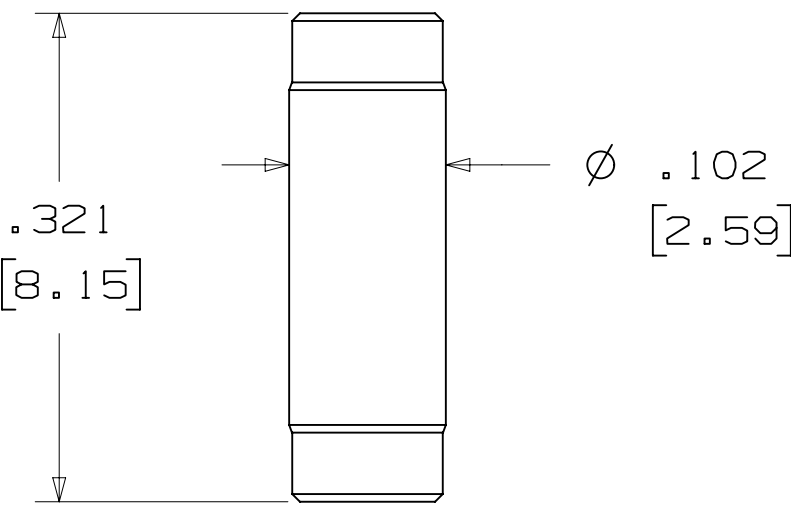
SHORT

SNAP-IN LATCHES



NOTE:
SNAP-IN LATCHES CAN ONLY BE ORDERED SEPARATELY AND ARE THE CUSTOMERS RESPONSIBILITY TO INSTALL.

POLARIZING POST



3M PART NO.	MATERIAL	COLOR
3201-4	LCP	BLACK

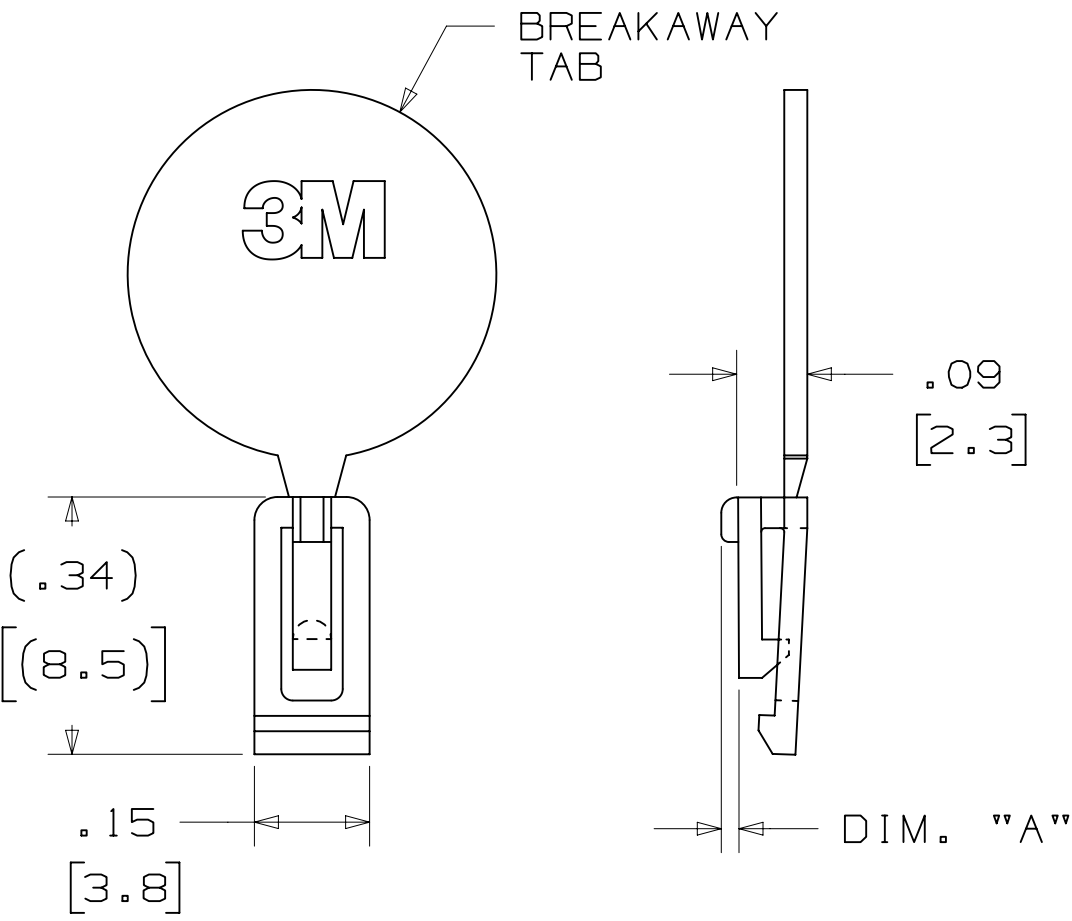
NOTE:
INSERT POST INTO ONE MOUNTING HARDWARE HOLE ON BOTTOM OF HEADER. SET POST TO PROTRUDE .115 [2.92]

(K2) OPTION

2500 & 3000 SERIES SHROUDED HEADER					
TOTAL NO. OF PINS	NO. OF TAILS KINKED	POSITIONS KINKED			
10	4	3	4	7	8
14	4	3	4	11	12
16	4	3	4	13	14
20	4	3	4	17	18
26	4	3	4	23	24
34	4	7	8	27	28
40	4	7	8	33	34
50	4	7	8	43	44
60	4	11	12	49	50
64	4	11	12	53	54

KINKED TAIL DETAIL:
- KINK IS LOCATED .05" BELOW BOTTOM SURFACE OF PLASTIC.
- EXTERNAL RADIUS OF KINK TOWARD PART CENTERLINE.

POLARIZING KEY



3M PART NO.	MATERIAL	COLOR	DIM. 'A'
N3518	LCP	BLACK	.02

NOTE:
#2216 B/A SCOTCHWELD CAN BE USED TO ADHERE KEYS.

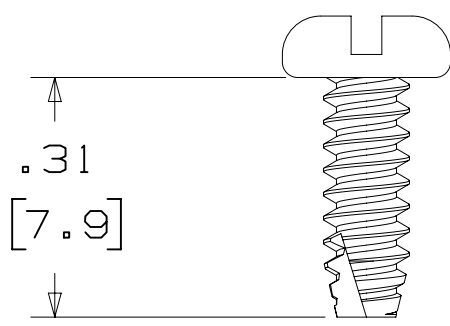
DESIGN REFERENCE		NEXT ASSEMBLY		H	60056	MAR 06,2015 REVISE ORDERING NUMBER		JNC	RS
G		56068		AUG 05,2014 REVISED AND REDRAWN		JNC	RS		
DIVISION		DIVISION CODE		REV	ECO	ISSUE DATE AND DESCRIPTION		DRFT	CHKD
Interconnect Solutions		EMSD		DRP	CASTIGLIONE	AUG 05,2014		MFG	DATE
DO NOT SCALE DRAWING		SCALE 4/1		CHKD		DATE		APPR	DATE
THIRD ANGLE PROJECTION		INTERPRET PER ASME Y14.5 - 2009		R. SCHERER		SEP 05,2014			
MAX SURFACE ROUGHNESS		TOLERANCES EXCEPT AS NOTED		3M		© 3M COPYRIGHT 2015		This document and the information it contains are 3M property and may not be reproduced or further distributed without 3M permission, or used or disclosed other than for 3M authorized purposes. All rights reserved.	
INCHES .00 ±.01 .000 ±.005 .0000 ±		MILLIMETERS 0 ± .0 ±.3 .00 ±.13 .000 ±		TITLE		HEADER, 3-WALL, .100 X .100 LATCH/EJECTOR, STRAIGHT & RA			
MARKED ONLY		CAGE NUMBER		SIZE		DRAWING NO.		REV.	
		D		78-5100-0771-5		H			
		MODEL		3000 SERIES		DET		YES NO	
						SHT 3 OF 4			

78-5100-0771-5
DRAWING NUMBER

Imaged: H.1 3/6/2015 12:53 PM UTC-06:00

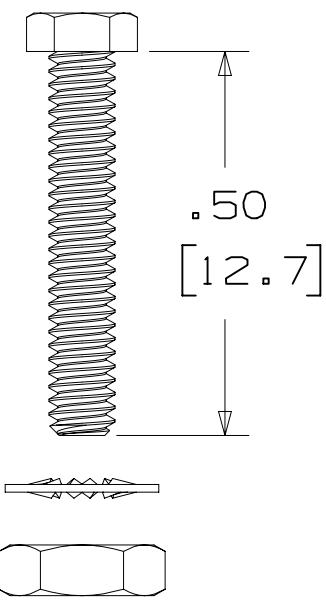
3M™ THREE-WALL HEADER, 3000 SERIES
.100" X .100" LATCH/EJECTOR, STRAIGHT AND RIGHT ANGLE

MOUNTING HARDWARE



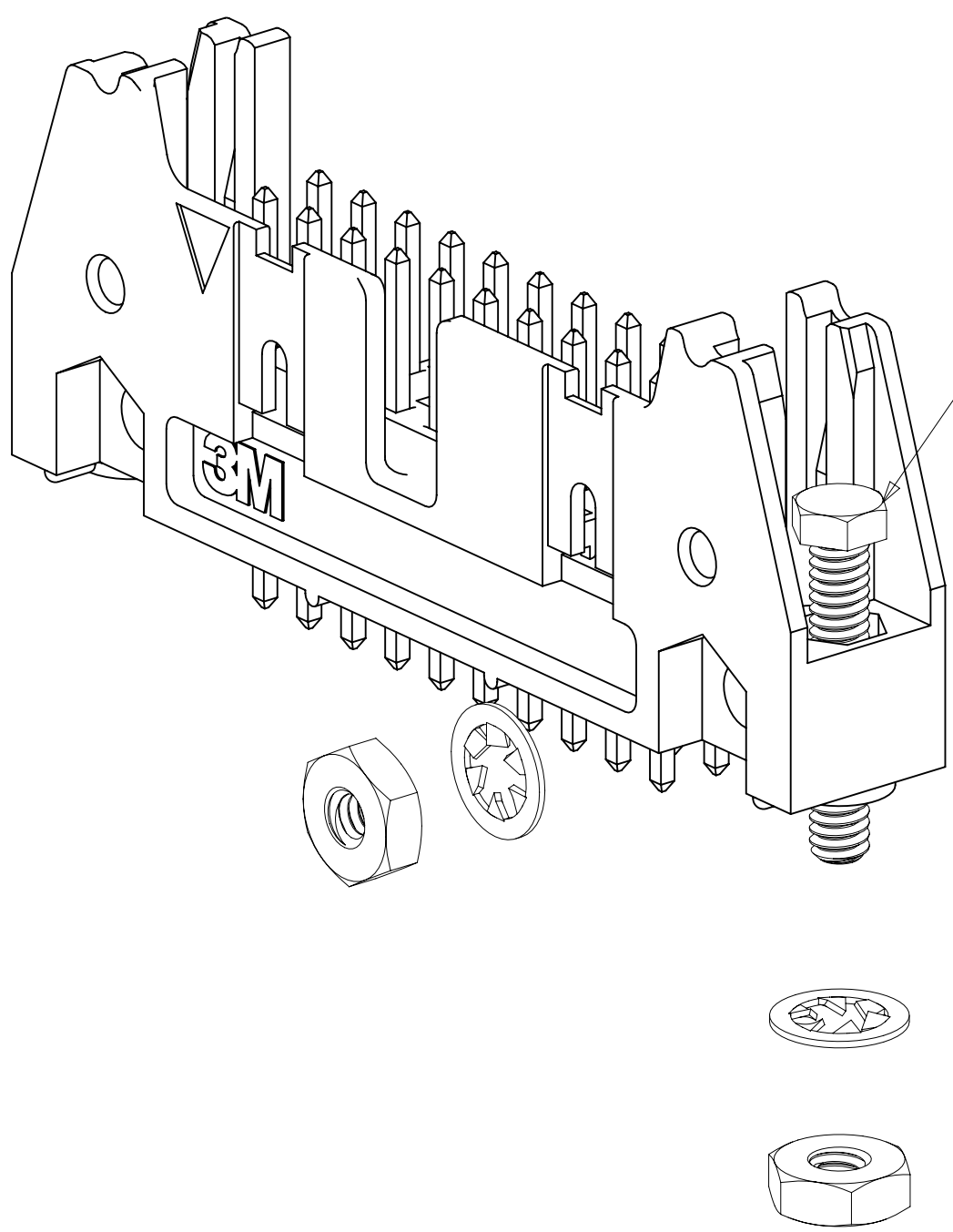
3341-5

(INSTALL FROM BOTTOM OF BOARD)
PANHEAD THREAD CUTTING SCREW:
#4-24 X 5/16"
TYPE: USA STD BT, FEDERAL B6
MATERIAL: STAINLESS STEEL



3341-6

HEX HEAD BOLT, NUT AND WASHER:
BOLT - #2-56 X 1/2"
MATERIAL: STAINLESS STEEL

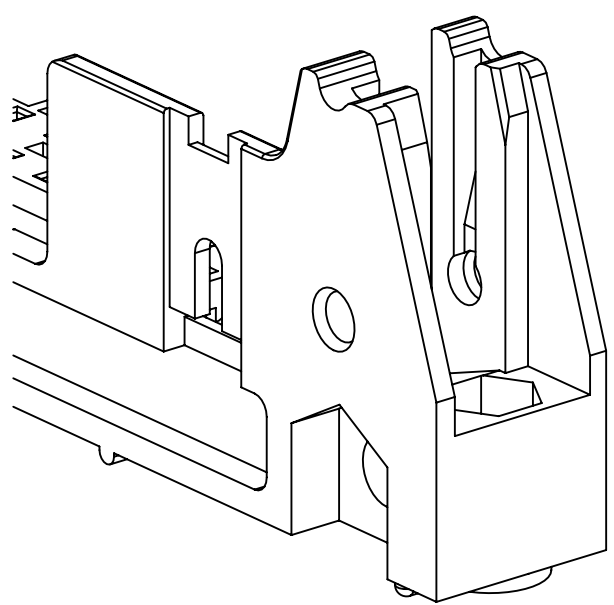


STRAIGHT VERSION INSTALL
(MUST BE INSERTED PRIOR TO
LATCH INSTALL)

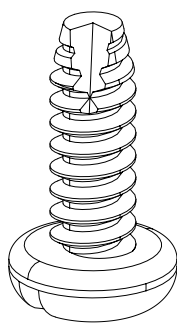
RIGHT ANGLE VERSION INSTALL

3341-6

#2-56 NUT AND BOLT
TORQUE FOR EACH BOLT: 1.25 - 3.125 INCH LBS.



#4-24 TYPE BT SELF THREADING SCREW
WHEN USING LATCHES, MAXIMUM LENGTH
OF SCREW IS .250 INCHES PLUS
THICKNESS OF THE BOARD.
TORQUE FOR EACH SCREW IS 3-5 INCH LBS.



3341-5

H		60050E		MAR 06, 2015		JNC		RS			
G		5606B		AUG 05, 2014		JNC		RS			
DESIGN REFERENCE		NEXT ASSEMBLY		REV		ECO		ISSUE DATE AND DESCRIPTION		DRFT	CHKD
ACROSS CODES				DRFT		CASTIGLIONE		DATE		AUG 05, 2014	
				CHKD				DATE			
								APPROVAL		DATE	
								R. SCHERER		SEP 05, 2014	
DIVISION		DIVISION CODE		© 3M COPYRIGHT 2015							
Interconnect Solutions		EMSD		This document and the information it contains are 3M property and may not be reproduced or further distributed without 3M permission, or used or disclosed other than for 3M authorized purposes. All rights reserved.							
DO NOT SCALE DRAWING		SCALE 4 1		TOLERANCES EXCEPT AS NOTED		TITLE					
				INCHES		HEADER, 3-WALL, .100 X .100 LATCH/EJECTOR, STRAIGHT & RA					
THIRD ANGLE PROJECTION				.0000 ± .01							
INTERPRET PER ASME Y14.5 - 2009				.0000 ± .005							
MAX SURFACE ROUGHNESS				.0000 ± .0005							
				MILLIMETERS							
✓				.0000 ± .3							
□ MARKED ONLY				.0000 ± .13							
				.0000 ± .0005							
				.0000 ± .0005							
				.0000 ± .0005							
				.0000 ± .0005							
				.0000 ± .0005							
				.0000 ± .0005							
				.0000 ± .0005							
				.0000 ± .0005							
				.0000 ± .0005							
				.0000 ± .0005							
				.0000 ± .0005							
				.0000 ± .0005							
				.0000 ± .0005							
				.0000 ± .0005							
				.0000 ± .0005							
				.0000 ± .0005							
				.0000 ± .0005							
				.0000 ± .0005							
				.0000 ± .0005							
				.0000 ± .0005							
				.0000 ± .0005							
				.0000 ± .0005							
				.0000 ± .0005							
				.0000 ± .0005							
				.0000 ± .0005							
				.0000 ± .0005							
				.0000 ± .0005							
				.0000 ± .0005							
				.0000 ± .0005							
				.0000 ± .0005							
				.0000 ± .0005							
				.0000 ± .0005							
				.0000 ± .0005							
				.0000 ± .0005							
				.0000 ± .0005							
				.0000 ± .0005							
				.0000 ± .0005							
				.0000 ± .0005							
				.0000 ± .0005							
				.0000 ± .0005							
				.0000 ± .0005							
				.0000 ± .0005							
				.0000 ± .0005							
				.0000 ± .0005							
				.0000 ± .0005							
				.0000 ± .0005							
				.0000 ± .0005							
				.0000 ± .0005							
				.0000 ± .0005							
				.0000 ± .0005							
				.0000 ± .0005							
				.0000 ± .0005							
				.0000 ± .0005							
				.0000 ± .0005							
				.0000 ± .0005							
				.0000 ± .0005							
				.0000 ± .0005							
				.0000 ± .0005							
				.0000 ± .0005							
				.0000 ± .0005							
				.0000 ± .0005							
				.0000 ± .0005							
				.0000 ± .0005							
				.0000 ± .0005							
				.0000 ± .0005							
				.0000 ± .0005							
				.0000 ± .0005							
				.0000 ± .0005							
				.0000 ± .0005							
				.0000 ± .0005							
				.0000 ± .0005							
				.0000 ± .0005							
				.0000 ± .0005							
				.0000 ± .0005							
				.0000 ± .0005							
				.0000 ± .0005							
				.0000 ± .0005							
				.0000 ± .0005							
				.0000 ± .0005							
				.0000 ± .0005							
				.0000 ± .0005							
				.0000 ± .0005							
				.0000 ± .0005							
				.0000 ± .0005							
				.0000 ± .0005							
				.0000 ± .0005							
				.0000 ± .0005							
				.0000 ± .0005							
				.0000 ± .0005							
				.0000 ± .0005							
				.0000 ± .0005							
				.0000 ± .0005							
				.0000 ± .0005							
				.0000 ± .0005							
				.0000 ± .0005							
				.0000 ± .0005							
				.0000 ± .0005							
				.							

Mouser Electronics

Authorized Distributor

Click to View Pricing, Inventory, Delivery & Lifecycle Information:

[3M:](#)

[3408-1602UG](#) [3408-D003](#) [3429-L303](#) [3793-5005](#) [3429-5502UG](#) [3429-5602UG](#) [3429-6502UG](#) [3429-6603UG](#)
[3431-6602UG](#) [3432-L303](#) [3432-6603UG](#) [3433-6602UG](#) [3793-1502UG](#) [3793-6502UG](#) [3428-6502UG](#) [3432-6602UG](#)
[3429-D303UB](#) [3428-2602UG](#) [3433-6205](#) [3314-5402](#) [3764-5503UG](#) [3314-L303](#) [3428-1502UG](#) [3433-4305](#) [3764-](#)
[L303](#) [3793-6402](#) [3432-6503UG](#) [3764-6505](#) [3428-6603UG](#) [3764-L003](#) [N3428-L303RB](#) [N3432-63Y2RB](#)