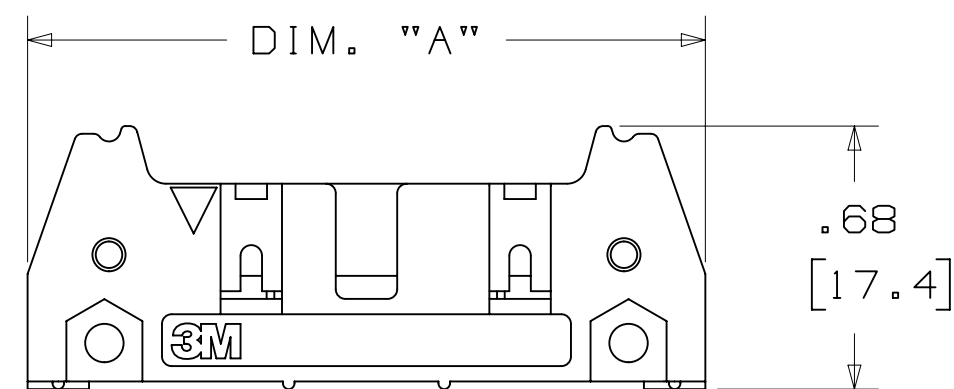
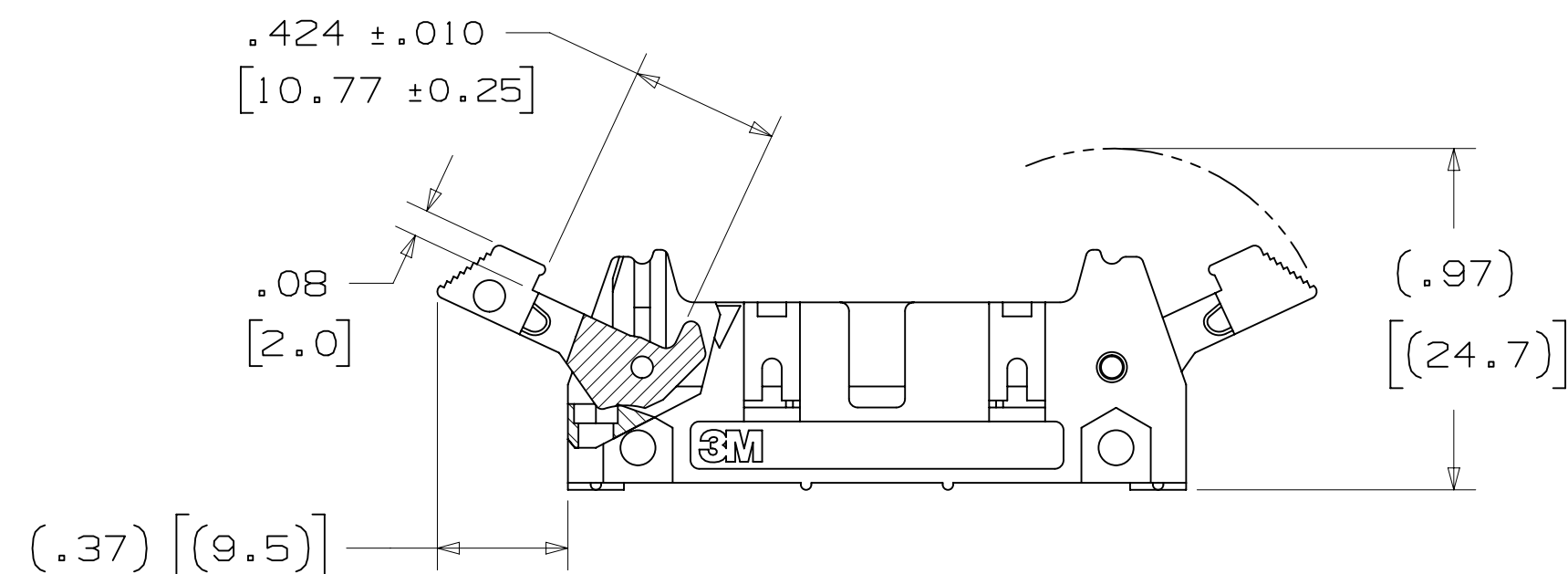


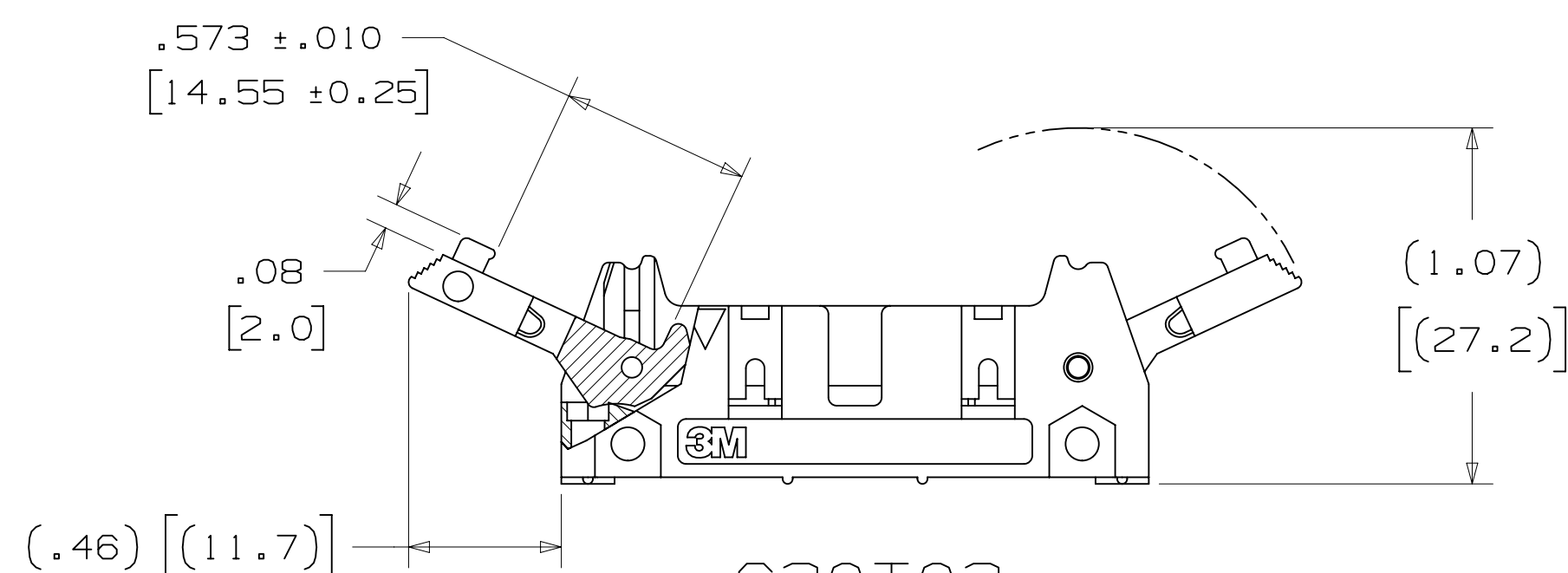
.100" X .100" LATCH/EJECTOR, STRAIGHT, COMPLIANT PIN



-600T02
HEADER WITHOUT LATCH EJECTOR



-620T02
HEADER WITH SHORT LATCH EJECTOR
FOR 3M SOCKETS WITHOUT STRAIN RELIEF



-630T02
HEADER WITH LONG LATCH EJECTOR
FOR 3M SOCKETS WITH STRAIN RELIEF

ORDERING INFORMATION

X XXXX-6X0T02XX

N= HIGH TEMP BLACK (PCT)/(RB PLATING REQ'D)
BLANK= (TC PLATING REQUIRED)

3M PART NUMBER:
(SEE TABLE 1)

- PLATING:

RB = 30μ" [0.76μm] GOLD WITH MATTE TIN TAILS
(APP. E1 & C1 APPLY)
TC = 30μ" [0.76μm] GOLD WITH TIN LEAD TAILS
(APP. E2 & C2 APPLY)

LATCH/EJECTOR SYSTEM: ☐

0 = NO LATCH/EJECTOR INSTALLED
2 = SHORT ROLL PIN LATCH/EJECTORS
3 = LONG ROLL PIN LATCH/EJECTORS

3M ELECTRONIC MATERIALS SOLUTIONS DIVISION
INTERCONNECT SOLUTIONS
<http://www.3mconnectors.com>

3M IS A TRADEMARK OF 3M COMPANY.
FOR TECHNICAL, SALES OR ORDERING
INFORMATION CALL 800-225-5373

- * MILITARY WITH 3M'S N3518 POLARIZING KEY) AND CENTERBUMP POLARIZATION.
- * OPTIONAL EJECTOR LATCHES.
- * MOUNTING HOLES FOR SECURING HEADER TO BOARD.
- * DEPENDABLE EYE-OF-THE-NEEDLE PIN DESIGN.
- * OPTIONAL POLARIZING POSTS AVAILABLE.
- * HIGH TEMPERATURE INSULATOR.

2 PHYSICAL :

```

INSULATOR:
MATERIAL: GLASS FILLED POLYESTER (PCT)
FLAMMABILITY: UL94V-0
COLOR: BLACK
CONTACT:
MATERIAL: COPPER ALLOY
PLATING:
UNDER PLATING: 100μ" [ 2.54μm ] NICKEL
WIPING AREA: 30μ" [ 0.76μm ] AVG. GOLD
SOLDER TAILS: 100μ" [ 2.54μm ] TIN LEAD OR 300μ" [ 7.62μm ] MATTE TIN
                (SEE ORDERING INFORMATION)
MARKINGS: 3M LOGO, PART IDENTIFICATION NUMBER AND ORIENTATION TRIANGLE

```

2 ELECTRICAL :

CURRENT RATING: 1A
INSULATION RESISTANCE: $>1 \times 10^9 \Omega$ AT 500 V_{DC}
WITHSTANDING VOLTAGE: 1,000V_{RMS} AT SEA LEVEL

2 ENVIRONMENTAL :


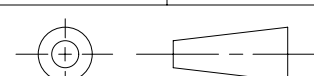

TEMPERATURE RATING: -55° C TO 105° C

NOTES	
1.	REGULATORY INFORMATION: ROHS COMPLIANT. SEE THE REGULATORY INFORMATION APPENDIX (RIA) IN THE "ROHS COMPLIANCE" SECTION OF WWW.3MCONNECTORS.COM FOR COMPLIANCE INFORMATION.

2 IN THE EVENT OF CONFLICT
BETWEEN THIS DATA AND THAT
CONTAINED IN THE PRODUCT
SPECIFICATION, THE PRODUCT
SPECIFICATION TAKES PRECEDENT

3 NOTCHES A & C WILL ACCOMODATE
3M POLARIZING KEY: N3518.

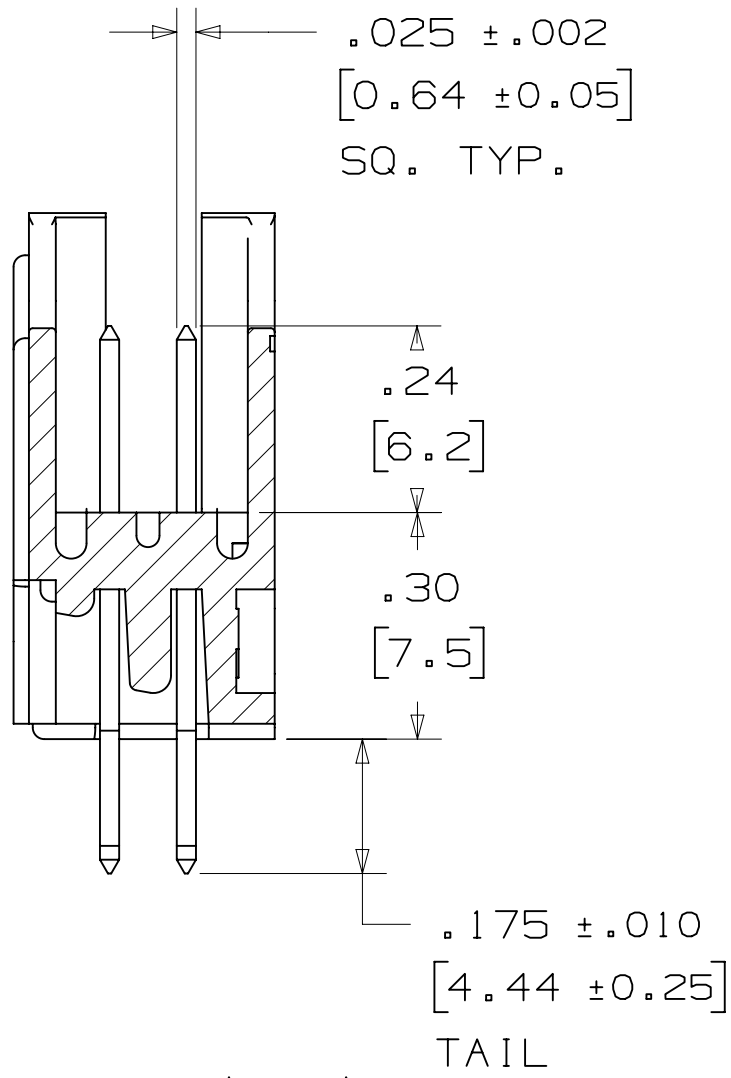
4 MOUNTING HARDWARE:
REAR ENTRY:
#4-24 THREAD CUTTING SCREW
(3M PART #3341-5) WITH
Ø .116 [2.95] MOUNTING HOLE.
FRONT ENTRY:
(PRIOR TO INSTALLATION OF LATCH
#2-56 BOLT AND NUT (3M PART
#3341-6) WITH Ø .106 [2.69]
MOUNTING HOLE.

DIMENSIONS: INCHES [MM] [MM] IS REF. ONLY		E	56068	JUL 31, 2014		JNC	RS
		REV	ECO	REVISED AND REDRAWN			
DESIGN REFERENCE		NEXT ASSEMBLY		REV	ECO	ISSUE DATE AND DESCRIPTION	DRFT
ACCESS CODES				DATE	JUL 31, 2014	MFG	DATE
				CHKD		DATE	
						APPRV.	SEP 05, 2014
						RSCHERER	
DIVISION		DIVISION CODE					
Interconnect Solutions		EMSD					
DO NOT SCALE		TOLERANCES EXCEPT AS NOTED		 3M Center St. Paul, MN 55144 This document and the information it contains are 3M property and may not be reproduced or further distributed without the prior permission or disclosed other than for 3M authorized purposes. All rights reserved.			
DRAWING							
		INCHES .00 ± .01 .0000 ± .0005 .0000 ±		TITLE HEADER, 4-WALL, .100 X .100 LATCH/EJECTOR, STR COMPLIANT PIN			
THIRD ANGLE PROJECTION							
INTERPRET PER ASME Y14.5 - 2009		MILLIMETERS 0 ± .3 .00 ± .13 .000 ±					
MAX. SURFACE ROUGHNESS				CAGE NUMBER	ISIZE		DRAWING NO.
				D	78-5100-0478-7		E
<input checked="" type="checkbox"/> MARKED SURFACES <input type="checkbox"/> UNMARKED SURFACES		ANGLES 3000 SERIES		MODEL	DET. LISTS <input type="checkbox"/> YES <input checked="" type="checkbox"/> NO		REV.
							SHT 1 OF

cUL[®] US
UL FILE NO: E68080

3M™ FOUR-WALL HEADER, 3000 SERIES

.100" X .100" LATCH/EJECTOR, STRAIGHT, COMPLIANT PIN



SECTION A - A

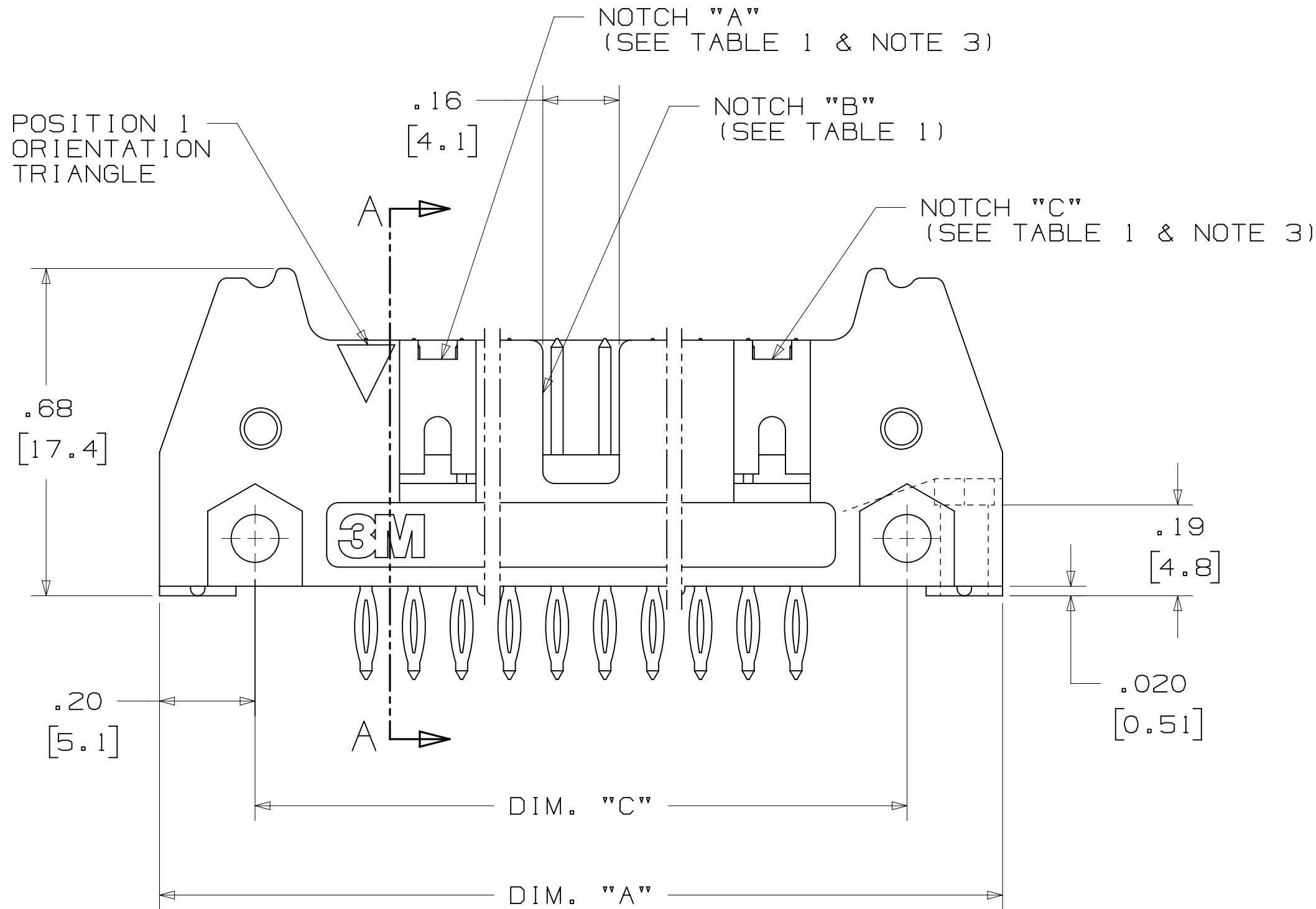
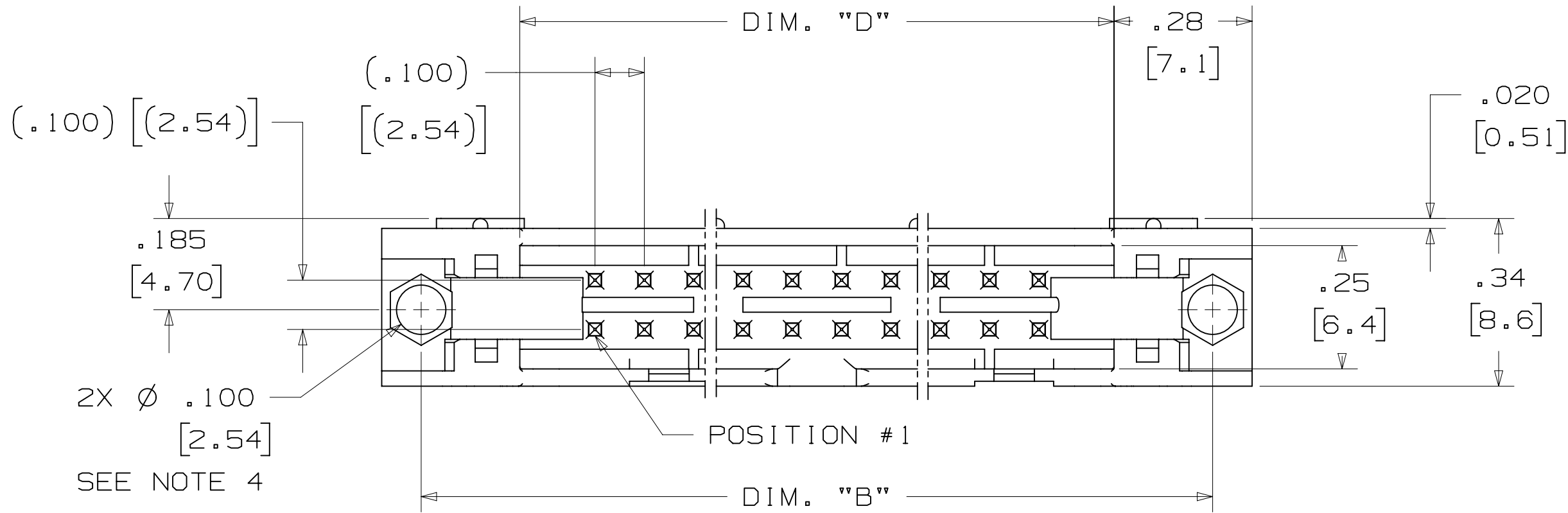


TABLE 1								
PIN QTY.	3M PART NUMBER	DIM. "A"	DIM. "B"	DIM. "C"	DIM. "D"	POLARIZING NOTCHES	INSERTION PLATEN 3442-00XX	PIN QTY.
10	3793	1.26 [32.1]	1.105 [28.04]	.865 [21.97]	.71 [18.0]	BC	3442-0048	10
14	3314	1.46 [37.2]	1.305 [33.12]	1.065 [27.05]	.91 [23.1]	BC	3442-0049	14
16	3408	1.56 [39.7]	1.405 [35.66]	1.165 [29.59]	1.01 [25.6]	ABC	3442-0050	16
20	3428	1.76 [44.8]	1.604 [40.74]	1.365 [34.67]	1.21 [30.7]	ABC	3442-0051	20
24	3627	1.96 [49.9]	1.805 [45.82]	1.565 [39.75]	1.41 [35.8]	ABC	3442-0052	24
26	3429	2.06 [52.4]	1.905 [48.36]	1.665 [42.29]	1.51 [38.3]	ABC	3442-0053	26
30	3440	2.26 [57.5]	2.105 [53.44]	1.865 [47.37]	1.71 [43.4]	ABC	3442-0054	30
34	3431	2.46 [62.6]	2.305 [58.52]	2.065 [52.45]	1.91 [48.5]	ABC	3442-0055	34
40	3432	2.76 [70.2]	2.605 [66.14]	2.365 [60.07]	2.21 [56.1]	ABC	3442-0056	40
50	3433	3.26 [82.9]	3.105 [78.84]	2.865 [72.77]	2.71 [68.8]	ABC	3442-0057	50
60	3372	3.76 [95.6]	3.605 [91.54]	3.365 [85.47]	3.21 [81.5]	ABC	3442-0058	60
64	3764	3.96 [100.7]	3.805 [96.62]	3.565 [90.55]	3.41 [86.6]	ABC	3442-0059	64

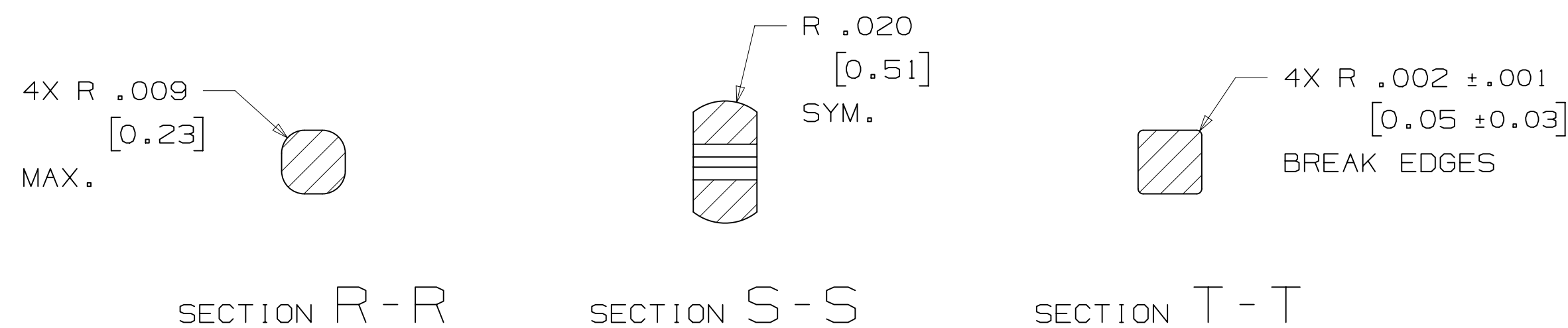
ASSEMBLY EQUIPMENT:
USE 3442-00XX PLATEN (SEE TABLE #1) AND APPROPRIATE COMMERCIAL ARBOR PRESS
TO PRESS HEADER INTO PC BOARD.

DESIGN REFERENCE		NEXT ASSEMBLY		E 56068		JUL 31,2014		JNC		RS	
REV		ECO		ISSUE DATE AND DESCRIPTION		DRFT		CHKD			
CAGE CODE		REV		CASTIGLIONE		DATE		MFG		DATE	
CHKD		DATE		APPR		R. SCHERER		DATE		SEP 05,2014	
DIVISION		Interconnect Solutions		DIVISION CODE		EMSD		3M		© 3M COPYRIGHT 2015 3M Center St. Paul, MN 55144 This document and the information it contains are 3M property and may not be reproduced or further distributed without 3M permission, or used or disclosed other than for 3M authorized purposes. All rights reserved.	
DO NOT SCALE DRAWING		SCALE 4 1		TOLERANCES EXCEPT AS NOTED		INCHES .0 ±.01 .000 ±.005 .0000 ±		MILLIMETERS 0 ± .0 ±.3 .00 ±.13 .000 ±		TITLE HEADER, 4-WALL, .100 X .100 LATCH/EJECTOR, STR, COMPLIANT PIN	
THIRD ANGLE PROJECTION		INTERPRET PER ASME Y14.5 - 2009		CAGE NUMBER		SIZE		DRAWING NO.		REV.	
MAX SURFACE ROUGHNESS		DET SURFACES		MODEL		3000 SERIES		DET		YES X NO	
MARKED ONLY		ANGLES		SHT		2 OF 4					

.100" X .100" LATCH/EJECTOR, STRAIGHT, COMPLIANT PIN



HOLE SIZE FOR:
 * PREFERRED DRILLED: $\varnothing .0453 \pm .0005$
 * ACCEPTABLE DRILLED: $\varnothing .0453 \pm .0005 / - .0010$
 * AFTER ETCHBACK: $\varnothing .0460$ MAX.
 * AFTER PLATING: $\varnothing .040 \pm .003$
 * BOARD THICKNESS: .093 TO .150
 PLATING:
 * .001 MIN. COPPER PLATING THICKNESS
 * .0003 MIN. TIN PLATING



THIS SPEC SHEET DETAILS OUR STANDARD OFFERING.

BOTH SNAP-IN AND ROLL PIN LATCHES MAY BE ORDERED SEPARATELY. SNAP-IN AND ROLL PIN STYLE LATCHES ARE DIMENSIONALLY AND FUNCTIONALLY EQUIVALENT. IF ORDERING SNAP-IN OR ROLL PIN STYLE LATCHES SEPARATELY, PLEASE USE THE BELOW CHART.

LONG

SHORT

SNAP-IN LATCHES

(.03)

[.08] TYP.

NOTE:
SNAP-IN LATCHES CAN ONLY BE ORDERED
SEPARATELY AND ARE THE CUSTOMERS
RESPONSIBILITY TO INSTALL.

Technical drawing of a vertical cylinder. The height is dimensioned as .318 [8.08]. The diameter is dimensioned as \varnothing .102 [2.59].

NOTE:
INSERT POST INTO ONE MOUNTING
HARDWARE HOLE ON BOTTOM OF HEADER.
SET POST TO PROTRUDE .115 [2.92]

Technical drawing of a 3M Breakaway Tab. The drawing includes a top view and a side view.

Top View:

- The tab is circular with the "3M" logo in the center.
- A callout line points to the top edge of the tab, labeled "BREAKAWAY TAB".
- The diameter of the tab is dimensioned as $.34$ [8.5].
- The thickness of the tab is dimensioned as $.15$ [3.8].

Side View:

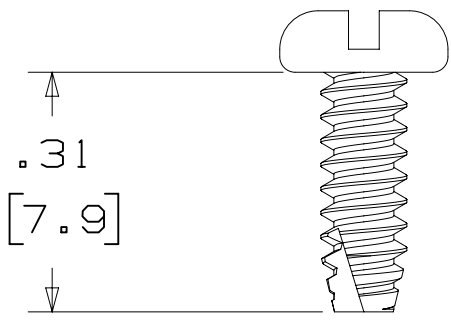
- The side view shows the profile of the tab.
- The thickness of the tab is dimensioned as $.09$ [2.3].
- The dimension "DIM. 'A'" is indicated at the bottom of the side view.

NOTE:
#2216 B/A SCOTCHWELD CAN BE USED TO
ADHERE KEYS.

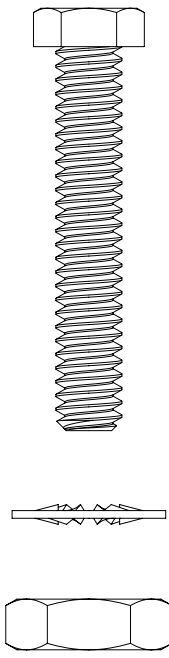
E 56068		JUL 31, 2014		JNC		RS	
REVISED AND REDRAWN							
REV ECO		ISSUE DATE AND DESCRIPTION		DRFT		CHKD	
DATE		DATE		DATE		DATE	
CNC CAST		JUL 31, 2014		MFG			
CHMD		DATE		APPROV		DATE SEP 05, 2014	
APPROV		R. SCHERER					
DIVISION		DIVISION CODE					
Interconnect Solutions		EMSO					
DO NOT SCALE DRAWING		SCALE 1		TOLERANCES EXCEPT AS NOTED			
THIRD ANGLE PROJECTION		INCHES		MILLIMETERS			
INTERPRET PER ASME Y14.5 - 2009		0.00 ±		0.005 ±			
MAX SURFACE ROUGHNESS		0.00 ±		0.13 ±			
SURFACES		0.000 ±		0.000 ±			
MARKED ONLY		ANGLES					
3M Center St. Paul, MN 55144		TITLE		HEADER, 4-WALL, 100 X 100 LATCH/EJECTOR STR, COMPLAINT PIN			
THIS DOCUMENT IS THE PROPERTY OF 3M AND IS NOT TO BE REPRODUCED OR FURTHER DISTRIBUTED WITHOUT PERMISSION OF 3M. ALL RIGHTS RESERVED.		SIZE		DRAWING NO.		REV.	
D		78-5100-0478-7		E			
MODEL		3000 SERIES		DET. YES		SHT 3 OF 4	

3M™ FOUR-WALL HEADER, 3000 SERIES
.100" X .100" LATCH/EJECTOR, STRAIGHT, COMPLIANT PIN

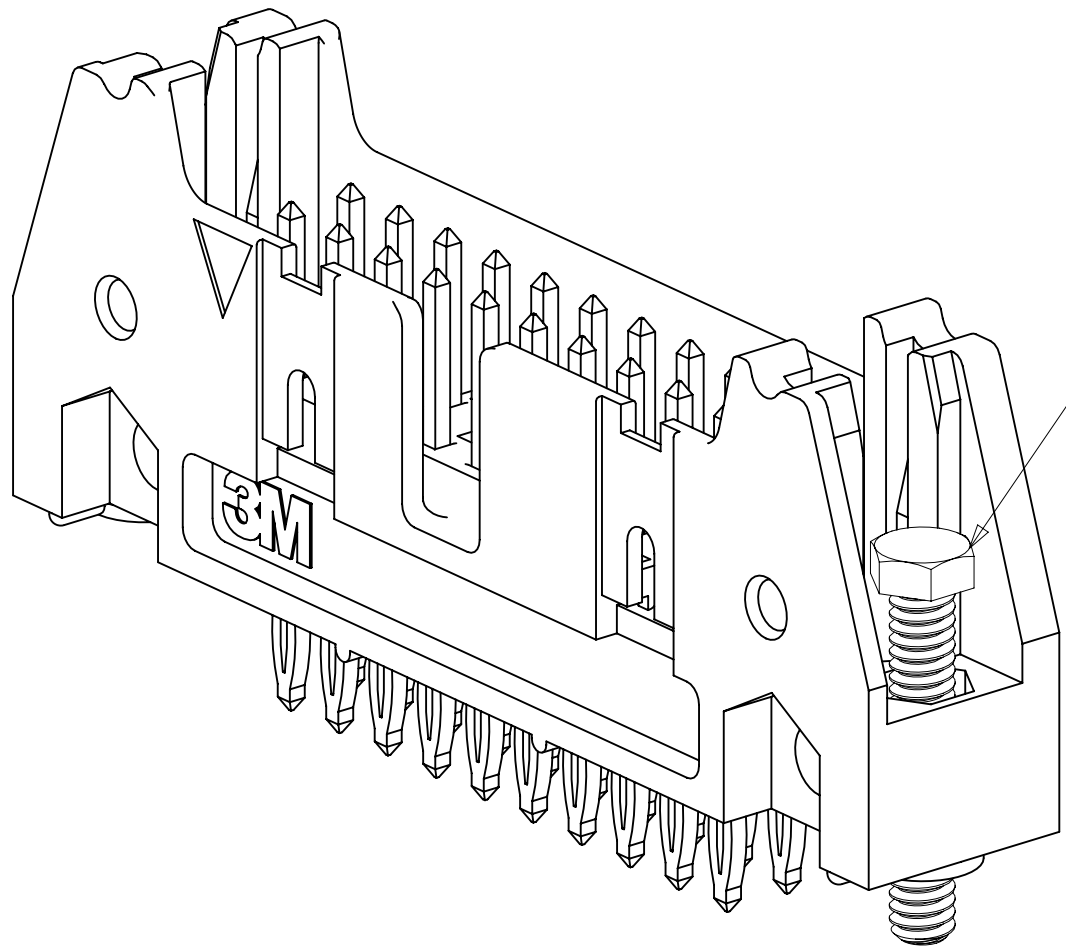
MOUNTING HARDWARE



3341-5
(INSTALL FROM BOTTOM OF BOARD)
PANHEAD THREAD CUTTING SCREW:
#4-24 X 5/16"
TYPE: USA STD BT, FEDERAL BG
MATERIAL: STAINLESS STEEL

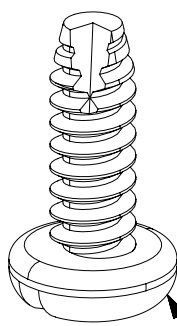
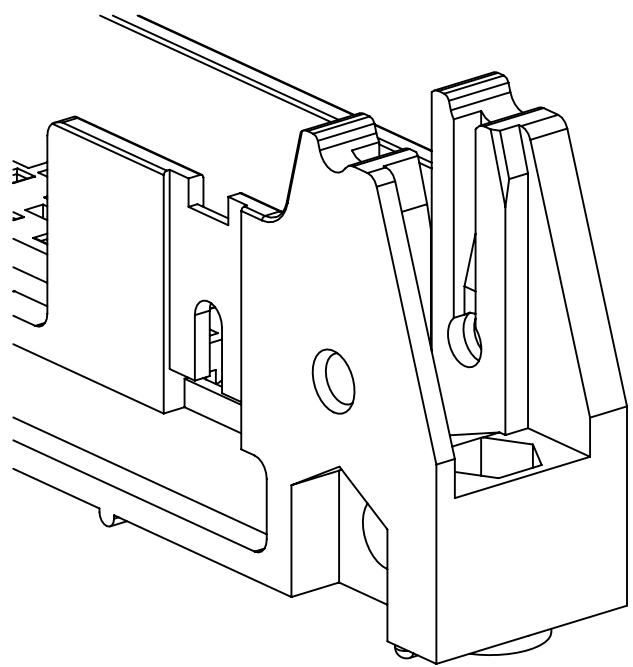


3341-6
HEX HEAD BOLT, NUT AND WASHER:
BOLT - #2-56 X 1/2"
MATERIAL: STAINLESS STEEL



STRAIGHT VERSION INSTALL
(MUST BE INSERTED PRIOR TO
LATCH INSTALL)

3341-6
#2-56 NUT AND BOLT
TORQUE FOR EACH BOLT: 1.25 - 3.125 INCH LBS.



3341-5
#4-24 TYPE BT SELF THREADING SCREW
WHEN USING LATCHES, MAXIMUM LENGTH
OF SCREW IS .250 INCHES PLUS
THICKNESS OF THE BOARD.
TORQUE FOR EACH SCREW IS 3-5 INCH LBS.

E 5608B		JUL 31, 2014		JNC		RS	
REVISED AND REDRAWN							
REV ECO		ISSUE DATE AND DESCRIPTION		DRFT		CHKD	
CAG1GL1ONE		DATE JUL 31, 2014		DATE			
CHKD		DATE		APPR R. SCHERER		DATE SEP 05, 2014	
DIVISION		DIVISION CODE		© 3M COPYRIGHT 2015			
Interconnect Solutions		EMSD		3M Center St. Paul, MN 55144		This document and the information it contains are 3M property and may not be reproduced or further distributed without the express permission, or used or disclosed other than for 3M authorized purposes. All rights reserved.	
DO NOT SCALE DRAWING		SCALE 4 1		TOLERANCES EXCEPT AS NOTED			
				INCHES			
				.00 ± .01			
				.000 ± .005			
				.0000 ±			
THIRD ANGLE PROJECTION				MILLIMETERS			
				0 ±			
				.00 ± .3			
				.00 ± .13			
				.000 ±			
MAX SURFACE ROUGHNESS				CAGE NUMBER		DRAWING NO.	
✓ □ MARKED ONLY				D 578-5100-0478-7		REV.	
				MODEL		DET	
				3000 SERIES		YES NO	
						SHT 4 OF 4	

Mouser Electronics

Authorized Distributor

Click to View Pricing, Inventory, Delivery & Lifecycle Information:

[3M:](#)

[3442-0051](#)