

.100" X .100" LATCH/EJECTOR, STRAIGHT, COMPLIANT PIN



X XXXX-6X0T02XX

- PLATING:  
RB = 30μ" [ 0.76μm ] GOLD WITH MATTE TIN TAILS  
(APP. E1 & C1 APPLY)  
TC = 30μ" [ 0.76μm ] GOLD WITH TIN LEAD TAILS  
(APP. E2 & C2 APPLY)

3M IS A TRADEMARK OF 3M COMPANY.  
FOR TECHNICAL, SALES OR ORDERING  
INFORMATION CALL 800-225-5373

2 PHYSICAL :

INSULATOR: MATERIAL: GLASS FILLED POLYESTER (PCT)  
FLAMMABILITY: UL94V-0  
COLOR: BLACK  
CONTACT: MATERIAL: COPPER ALLOY  
PLATING:  
UNDER PLATING: 100μ" [ 2.54μm ] NICKEL  
WIPING AREA: 30μ" [ 0.76μm ] AVG. GOLD  
SOLDER TAILS: 100μ" [ 2.54μm ] TIN LEAD OR 300μ" [ 7.62μm ] MATTE TIN  
(SEE ORDERING INFORMATION)  
MARKINGS: 3M LOGO, PART IDENTIFICATION NUMBER AND ORIENTATION TRIANGLE

2 ELECTRICAL :

CURRENT RATING: 1A  
INSULATION RESISTANCE:  $>1 \times 10^9 \Omega$  AT 500 V<sub>DC</sub>  
WITHSTANDING VOLTAGE: 1,000V<sub>RMS</sub> AT SEA LEVEL

## 2 ENVIRONMENTAL :

TEMPERATURE RATING: -55° C TO 105° C

4 MOUNTING HARDWARE:  
REAR ENTRY:  
#4-24 THREAD CUTTING SCREW  
(3M PART #3341-5) WITH  
Ø .116 [2.95] MOUNTING HOLE.  
FRONT ENTRY:  
(PRIOR TO INSTALLATION OF LATCH)  
#2-56 BOLT AND NUT (3M PART  
#3341-6) WITH Ø .106 [2.69]  
MOUNTING HOLE.

DIMENSIONS: INCHES [MM] [MM] IS REF. ONLY		JUL 31, 2014		JNC	RS
DESIGN REFERENCE		NEXT ASSEMBLY			
ACCESS	ECO	ISSUE DATE AND DESCRIPTION		DRFT	CHKD
CODES		DATE	MFG	DATE	
		CASTIGLIONE	JUL 31, 2014		
		CHKD	DATE	APPRV.	DATE
				R. SCHERER	SEP 05, 2014
DIVISION		DIVISION CODE			
Interconversion Solutions		EMSD			
DO NOT SCALE	SCALE	TOLERANCES EXCEPT AS NOTED			
DRAWING	2				
THIRD ANGLE PROJECTION		INCHES			
		.00 ± .01			
		.000 ± .005			
		.0000 ±			
INTERPRET PER ASME Y14.5 - 2009		MILLIMETERS			
		0 ±			
		.00 ± .3			
		.00 ± .13			
		.000 ±			
MAX. SURFACE ROUGHNESS		CAGE NUMBER		REV.	
16.00 SURFACES		SIZE DRAWING NO.			
16.00 SURFACES		D78-5100-0478-7		E	
MARKED ONLY		MODEL		DET. LISTS <input type="checkbox"/> YES <input checked="" type="checkbox"/> NO	
		3000 SERIES		SHT 1 OF 4	

**UL**  
UL FILE NO: E68080

3M™ FOUR-WALL HEADER, 3000 SERIES  
.100" X .100" LATCH/EJECTOR, STRAIGHT, COMPLIANT PIN

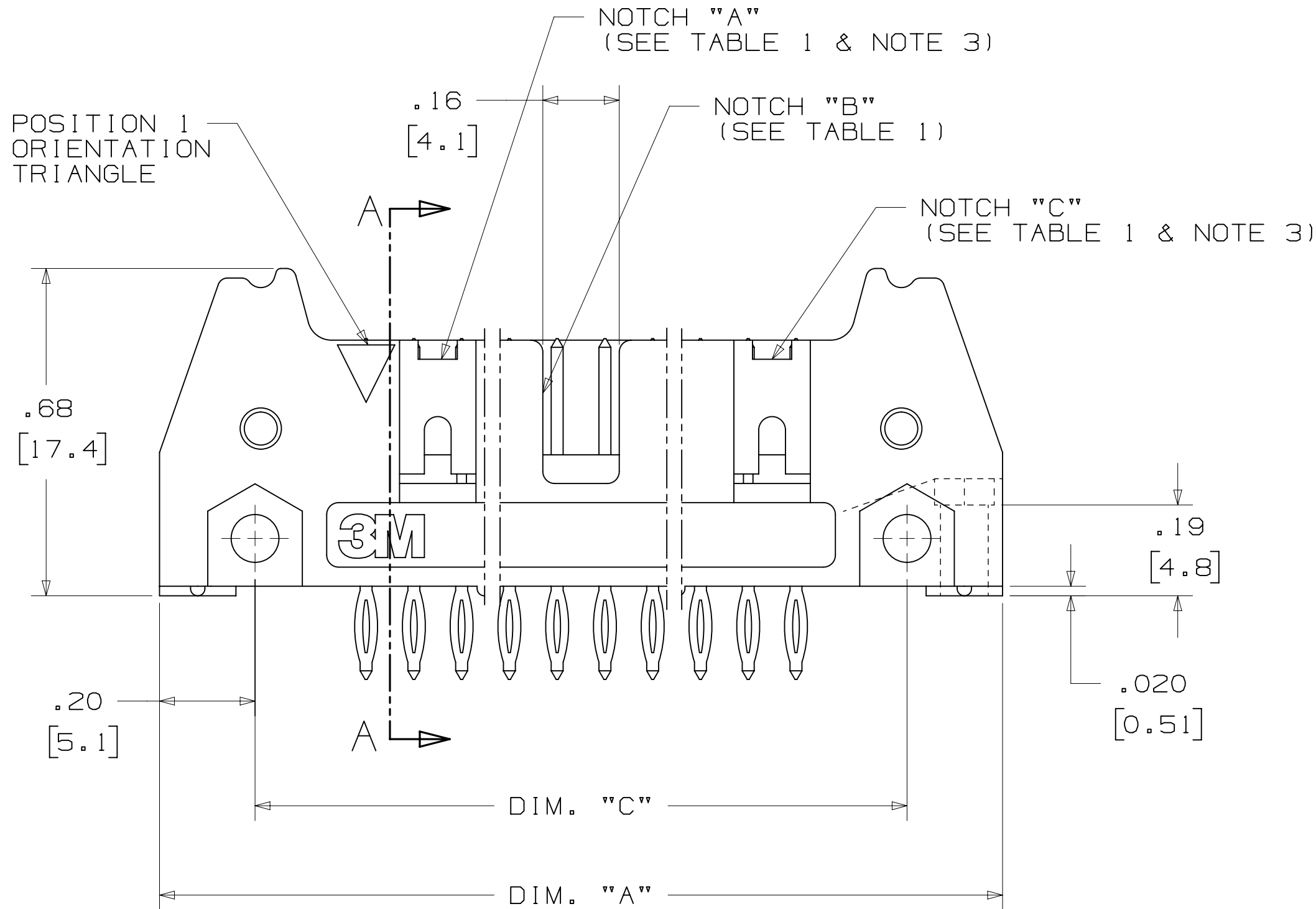
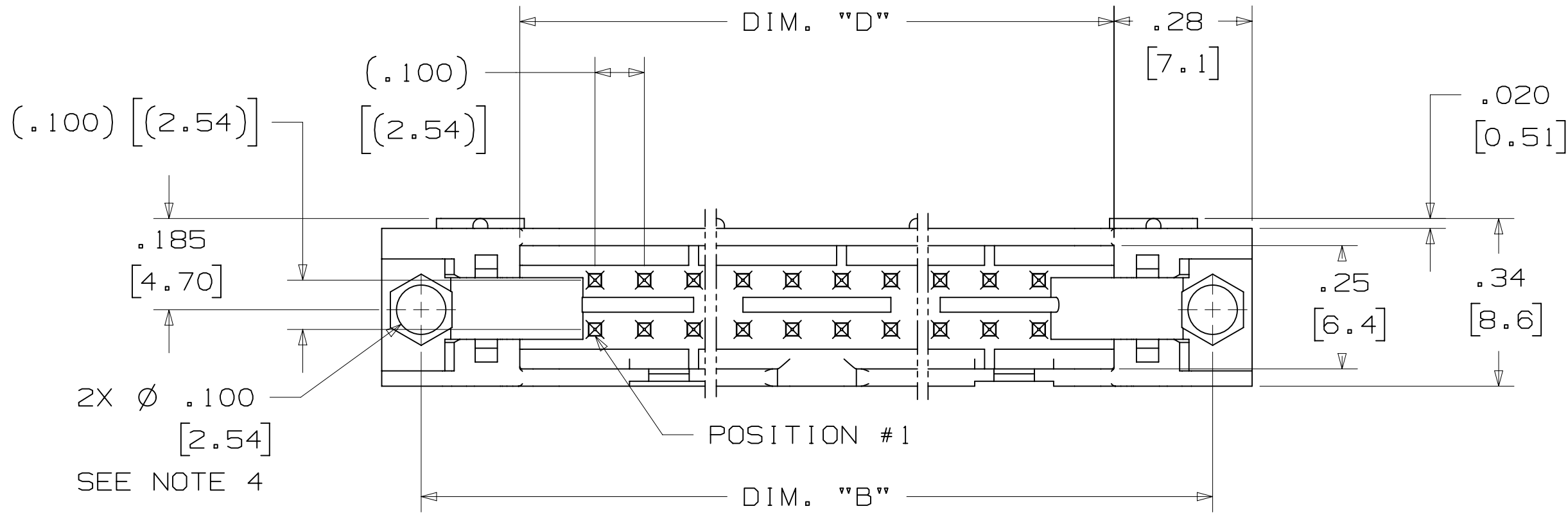
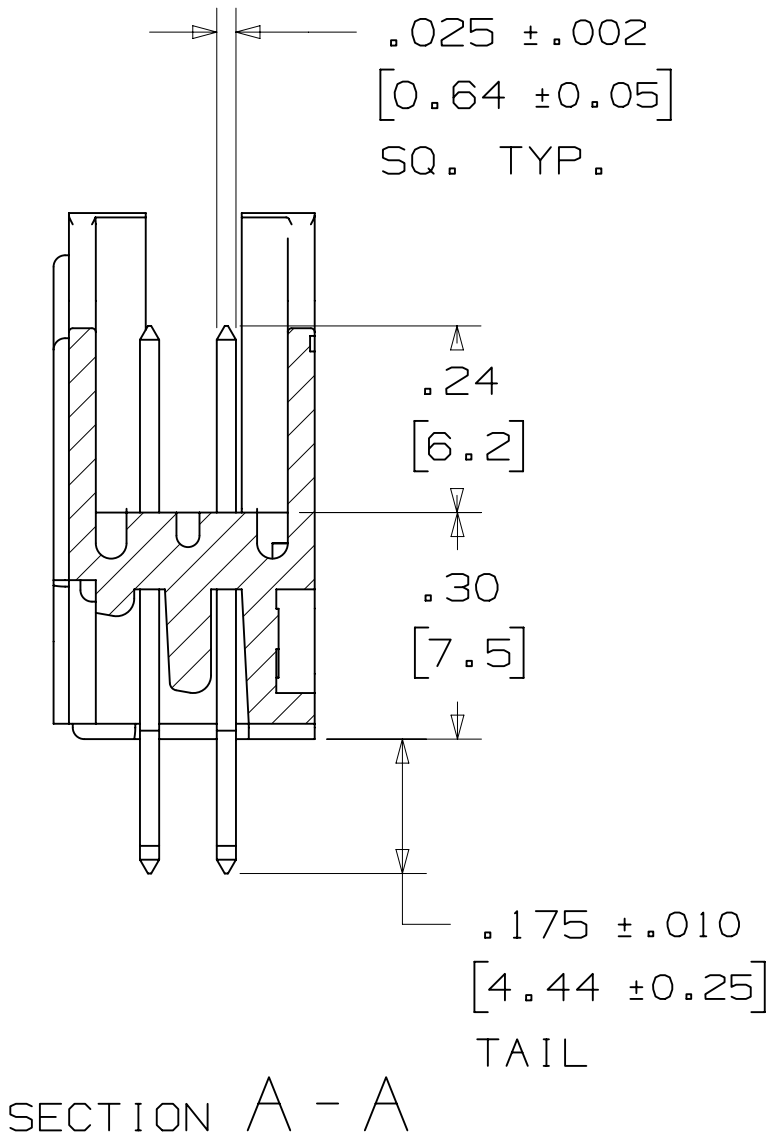


TABLE 1								
PIN QTY.	3M PART NUMBER	DIM. "A"	DIM. "B"	DIM. "C"	DIM. "D"	POLARIZING NOTCHES	INSERTION PLATEN 3442-00XX	PIN QTY.
10	3793	1.26 [32.1]	1.105 [28.04]	.865 [21.97]	.71 [18.0]	BC	3442-0048	10
14	3314	1.46 [37.2]	1.305 [33.12]	1.065 [27.05]	.91 [23.1]	BC	3442-0049	14
16	3408	1.56 [39.7]	1.405 [35.66]	1.165 [29.59]	1.01 [25.6]	ABC	3442-0050	16
20	3428	1.76 [44.8]	1.604 [40.74]	1.365 [34.67]	1.21 [30.7]	ABC	3442-0051	20
24	3627	1.96 [49.9]	1.805 [45.82]	1.565 [39.75]	1.41 [35.8]	ABC	3442-0052	24
26	3429	2.06 [52.4]	1.905 [48.36]	1.665 [42.29]	1.51 [38.3]	ABC	3442-0053	26
30	3440	2.26 [57.5]	2.105 [53.44]	1.865 [47.37]	1.71 [43.4]	ABC	3442-0054	30
34	3431	2.46 [62.6]	2.305 [58.52]	2.065 [52.45]	1.91 [48.5]	ABC	3442-0055	34
40	3432	2.76 [70.2]	2.605 [66.14]	2.365 [60.07]	2.21 [56.1]	ABC	3442-0056	40
50	3433	3.26 [82.9]	3.105 [78.84]	2.865 [72.77]	2.71 [68.8]	ABC	3442-0057	50
60	3372	3.76 [95.6]	3.605 [91.54]	3.365 [85.47]	3.21 [81.5]	ABC	3442-0058	60
64	3764	3.96 [100.7]	3.805 [96.62]	3.565 [90.55]	3.41 [86.6]	ABC	3442-0059	64

ASSEMBLY EQUIPMENT:  
USE 3442-00XX PLATEN (SEE TABLE #1) AND APPROPRIATE COMMERCIAL ARBOR PRESS  
TO PRESS HEADER INTO PC BOARD.

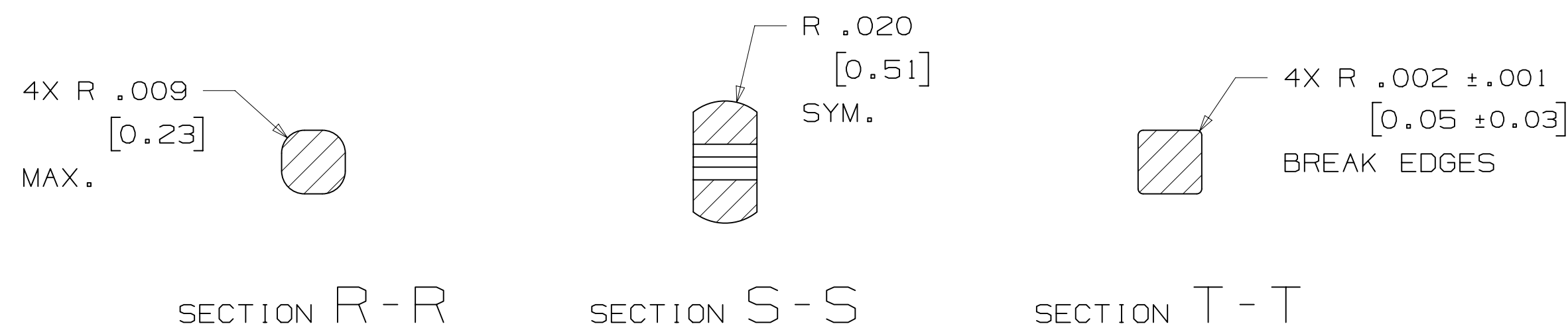
DESIGN REFERENCE		NEXT ASSEMBLY		E 56068		JUL 31,2014		JNC		RS	
REV		ECO		ISSUE DATE AND DESCRIPTION		DRFT		CHKD			
XREF CODES		DPR CASTIGLIONE		DATE JUL 31,2014		MFG		DATE			
CHKD		DATE		APPRV R. SCHERER		DATE SEP 05,2014					
DIVISION Interconnect Solutions		DIVISION CODE EMSD		3M Center St. Paul, MN 55144		© 3M COPYRIGHT 2015		This document and the information it contains are 3M property and may not be reproduced or further distributed without 3M permission, or used or disclosed other than for 3M authorized purposes. All rights reserved.			
DO NOT SCALE DRAWING		SCALE 4 1		TOLERANCES EXCEPT AS NOTED		INCHES .0 ±.01 .000 ±.005 .0000 ±		MILLIMETERS 0 ± .0 ±.3 .00 ±.13 .000 ±			
THIRD ANGLE PROJECTION		INTERPRET PER ASME Y14.5 - 2009		MAX SURFACE ROUGHNESS 12.5 SURFACES		MARKED ONLY		CAGE NUMBER D78-5100-0478-7		REV. E	
MODEL 3000 SERIES		DET LISTS		YES XNO		SHT 2 OF 4					

.100" X .100" LATCH/EJECTOR, STRAIGHT, COMPLIANT PIN



NOTE:  
PCB HOLE SIZES AND TOLERANCES RECOMMENDED FOR USE WITH 3M'S  
COMPLIANT PIN HEADER. THE INSERTION FORCE IS DESIGNED NOT TO  
EXCEED 40 POUNDS PER PIN AND THE WITHDRAWAL FORCE IS NOT  
LESS THAN 10 POUNDS PER PIN.

HOLE SIZE FOR:  
 \* PREFERRED DRILLED:  $\varnothing .0453 \pm .0005$   
 \* ACCEPTABLE DRILLED:  $\varnothing .0453 \pm .0005 / - .0010$   
 \* AFTER ETCHBACK:  $\varnothing .0460$  MAX.  
 \* AFTER PLATING:  $\varnothing .040 \pm .003$   
 \* BOARD THICKNESS: .093 TO .150  
 PLATING:  
 \* .001 MIN. COPPER PLATING THICKNESS  
 \* .0003 MIN. TIN PLATING

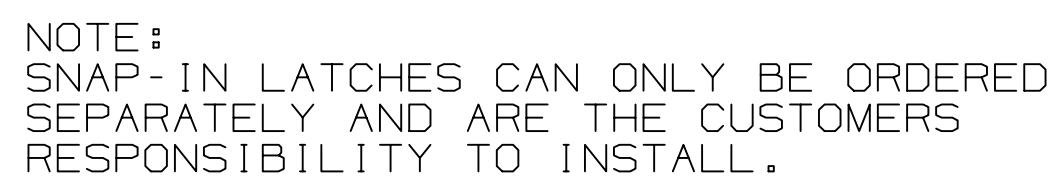


THIS SPEC SHEET DETAILS OUR STANDARD OFFERING.

3M HAS SEVERAL CAPABILITIES THAT CAN PROVIDE A PART TAILORED TO YOUR SPECIFIC NEEDS. ASK YOUR 3M SALES REPRESENTATIVE OR CUSTOMER SERVICE FOR MORE DETAILS.

BOTH SNAP-IN AND ROLL PIN LATCHES MAY BE ORDERED SEPARATELY. SNAP-IN AND ROLL PIN STYLE LATCHES ARE DIMENSIONALLY AND FUNCTIONALLY EQUIVALENT. IF ORDERING SNAP-IN OR ROLL PIN STYLE LATCHES SEPARATELY, PLEASE USE THE BELOW CHART.

MATERIAL	SHORT LATCH	LONG LATCH	LATCH STYLE	COLOR
HIGH TEMP. (PCT)	N3505-2B	N3505-3B	ROLL PIN	BLACK
HIGH TEMP (PPA)	N3505-30B	N3505-31B	SNAP-IN	BLACK



Technical drawing of a vertical cylinder. The height is dimensioned as .318 [8.08]. The diameter is dimensioned as  $\varnothing$  .102 [2.59].

3M PART NO.	MATERIAL	COLOR
3201-4	LCP	BLACK

NOTE:  
INSERT POST INTO ONE MOUNTING  
HARDWARE HOLE ON BOTTOM OF HEADER.  
SET POST TO PROTRUDE .115 [2.92]

Technical drawing of a 3M Breakaway Tab. The drawing includes a top view and a side view.

**Top View:**

- The tab is circular with the "3M" logo in the center.
- A leader line points to the outer edge of the tab, labeled "BREAKAWAY TAB".
- The diameter of the tab is dimensioned as  $.34$  [8.5].
- The thickness of the tab is dimensioned as  $.15$  [3.8].

**Side View:**

- The side view shows the profile of the tab.
- The thickness of the tab is dimensioned as  $.09$  [2.3].
- The dimension "DIM. 'A'" is indicated at the bottom of the side view.

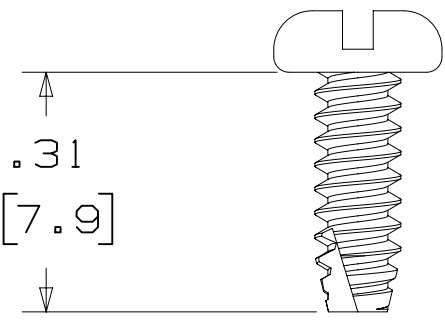
3M PART NO.	MATERIAL	COLOR	DIM. "A"
N3518	LCP	BLACK	.02

NOTE:  
#2216 B/A SCOTCHWELD CAN BE USED TO  
ADHERE KEYS.

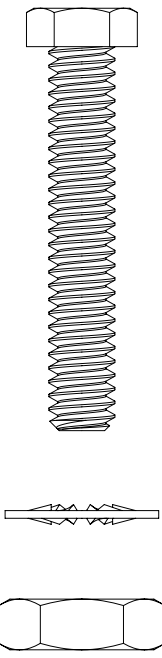
		E	56068	JUL 31, 2014	JNC	RS
		REVISED AND REDRAWN				
ASSEMBLY REFERENCE NEXT		REV	ECO	ISSUE DATE AND DESCRIPTION	DRFT	CHKD
ADDRESS CODES		CHG CASTIGLIONE		MFG JUL 31, 2014	DATE	
		CHGD		DATE	APPRV R. SCHERER	SHT SEP 05, 2014
DIVISION		END		© 3M COPYRIGHT 2015		
<b>Interconnect Solutions</b>				This document and its information is 3M property and may not be reproduced or further distributed without permission, or used disclosed other than for 3M authorized purposes. All rights reserved.		
DO NOT SCALE DRAWING		TOLERANCES EXCEPT AS NOTED		3M Center St. Paul, MN 55144		
SCALE 4 1		INCHES .00 ± .001 ± .0005 ± .0000 ±		TITLE <b>HEADER, 4-WALL, .100 X .100 LATCH/EJECTOR STR, COMPLIANT PIN</b>		
THIRD ANGLE PROJECTION		MILLIMETERS 0 ± .3 ± .13 ± 0 ±		CASE NUMBER <b>D78-5100-0478-7 E</b>		
INTERPRET PER ASME Y14.5 - 2009		MAX SURFACE ROUGHNESS SURFACES ✓ □ MARKED ONLY		SIZE DRAWING NO. <b>D78-5100-0478-7 E</b>		
		ANGLE S		DET THIS YES YES NO SHT 3 OF 4		

3M™ FOUR-WALL HEADER, 3000 SERIES  
.100" X .100" LATCH/EJECTOR, STRAIGHT, COMPLIANT PIN

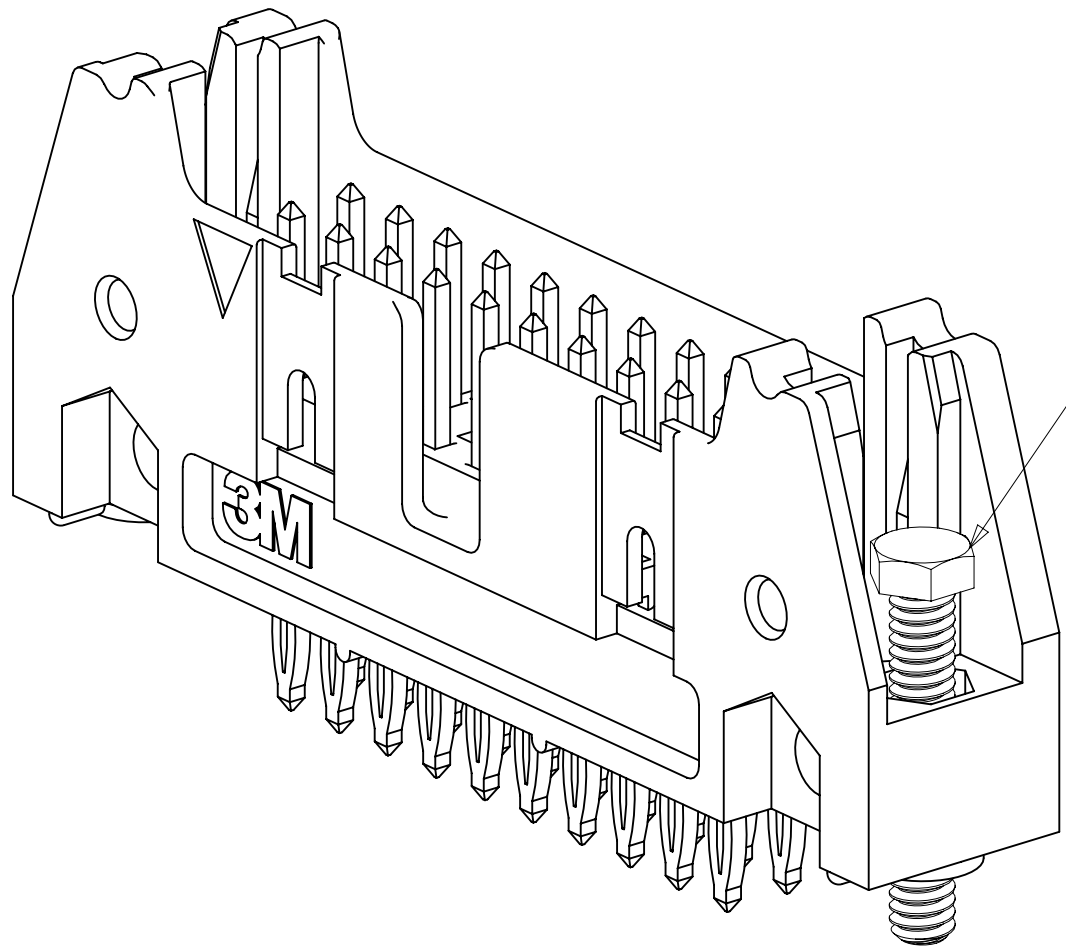
MOUNTING HARDWARE



3341-5  
(INSTALL FROM BOTTOM OF BOARD)  
PANHEAD THREAD CUTTING SCREW:  
#4-24 X 5/16"  
TYPE: USA STD BT, FEDERAL BG  
MATERIAL: STAINLESS STEEL

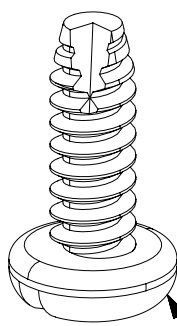
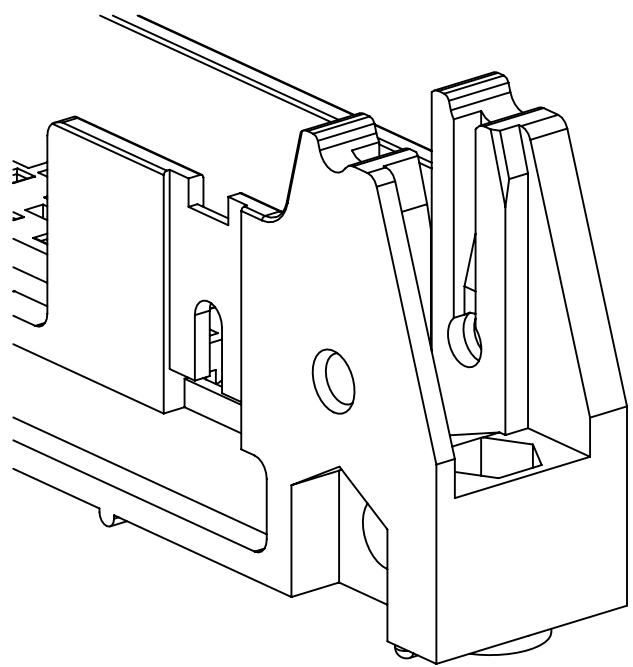


3341-6  
HEX HEAD BOLT, NUT AND WASHER:  
BOLT - #2-56 X 1/2"  
MATERIAL: STAINLESS STEEL



STRAIGHT VERSION INSTALL  
(MUST BE INSERTED PRIOR TO  
LATCH INSTALL)

3341-6  
#2-56 NUT AND BOLT  
TORQUE FOR EACH BOLT: 1.25 - 3.125 INCH LBS.



3341-5  
#4-24 TYPE BT SELF THREADING SCREW  
WHEN USING LATCHES, MAXIMUM LENGTH  
OF SCREW IS .250 INCHES PLUS  
THICKNESS OF THE BOARD.  
TORQUE FOR EACH SCREW IS 3-5 INCH LBS.

DESIGN REFERENCE		NEXT ASSEMBLY		REV	ECO	ISSUE DATE AND DESCRIPTION		DRFT	CHKD
XREF CODES		XREF CODES		DRP	DATE	MFG	DATE		
				CHKD	DATE	APPR	DATE		
DIVISION		DIVISION CODE		E 56068		JUL 31,2014		JNC	RS
Interconnect Solutions		EMSD		REVISED AND REDRAWN					
DO NOT SCALE DRAWING		SCALE 4/1		TOLERANCES EXCEPT AS NOTED		3M		This document and the information it contains are 3M property and may not be reproduced or further distributed without 3M permission, or used or disclosed other than for 3M authorized purposes. All rights reserved.	
THIRD ANGLE PROJECTION		INCHES .00 ± .01 .000 ± .0005 .0000 ±		MILLIMETERS 0 ± .0 ± .3 .00 ± .13 .000 ±		TITLE		HEADER, 4-WALL, .100 X .100 LATCH/EJECTOR, STR, COMPLIANT PIN	
INTERPRET PER ASME Y14.5 - 2009		MAX SURFACE ROUGHNESS		CAGE NUMBER		SIZE		DRAWING NO.	
✓ MARKED ONLY		ANGLES		D 78-5100-0478-7		E		REV.	
				MODEL		3000 SERIES		DET	
						YES		NO	
						SHT		4 OF 4	

# Mouser Electronics

Authorized Distributor

Click to View Pricing, Inventory, Delivery & Lifecycle Information:

[3M:](#)

[3429-660T02TC](#) [3442-126](#) [3627-660T02TC](#) [3428-6605](#) [3440-660T02TC](#) [N3793-650T02RB](#) [N3432-650T02RB](#)  
[3627-650T02TC](#) [3431-600T02TC](#) [3442-0052](#) [N3428-650T02RB](#) [N3428-660T02RB](#) [N3408-660T02RB](#) [N3764-](#)  
[660T02RB](#) [N3764-650T02RB](#) [3433-660T02TC](#) [N3314-660T02RB](#) [N3432-660T02RB](#) [N3793-660T02RB](#)