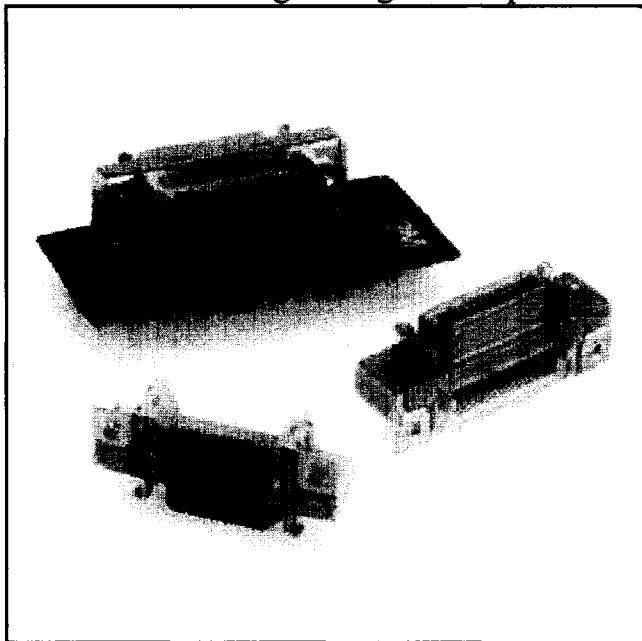


.050" Mini D Ribbon (MDR) Connectors

Surface Mount Right Angle Receptacle — Shielded

102XX-1210VE Series



133

- Surface mount right angle shielded I/O receptacle
- MDR digital LCD interface — 20 and 26 position
- Ultra-low signal skew design for high data rate transmission
- Ribbon type contact — industry preferred
- Reliable repetitive plugging/unplugging
- Latch design for easy use
- Positions: 20, 26 and 40

Date Issued: February 19, 1999

TS-0755-05
Sheet 1 of 3

Physical

Insulation

Material: Glass Reinforced Polyester (PCT)
Flammability: UL 94V-0
Color: Beige

Contact

Material: Copper Alloy (C521)
Plating:
Underplate: 80 μ " [2.0 μ m] Nickel — QQ-N-290, Class 2
Wiping Area: 20 μ " [0.50 μ m] Min Gold — MIL-G-45204, Type II, Grade C

Shroud and Latch Hook

Material: Steel
Plating: Nickel

Screw Lock

Material: Copper Alloy (C521)
Plating: Tin

Marking: 3M Logo and Part Number

Electrical

Current Rating: 1 A
Insulation Resistance: $> 5 \times 10^8 \Omega$ at 500 VDC
Withstanding Voltage: 500 Vrms for 1 Minute

Environmental

Temperature Rating: -55°C to $+105^\circ\text{C}$
Process: Surface mount compatible up to 240°C peak for short durations.

UL File No.: E68080

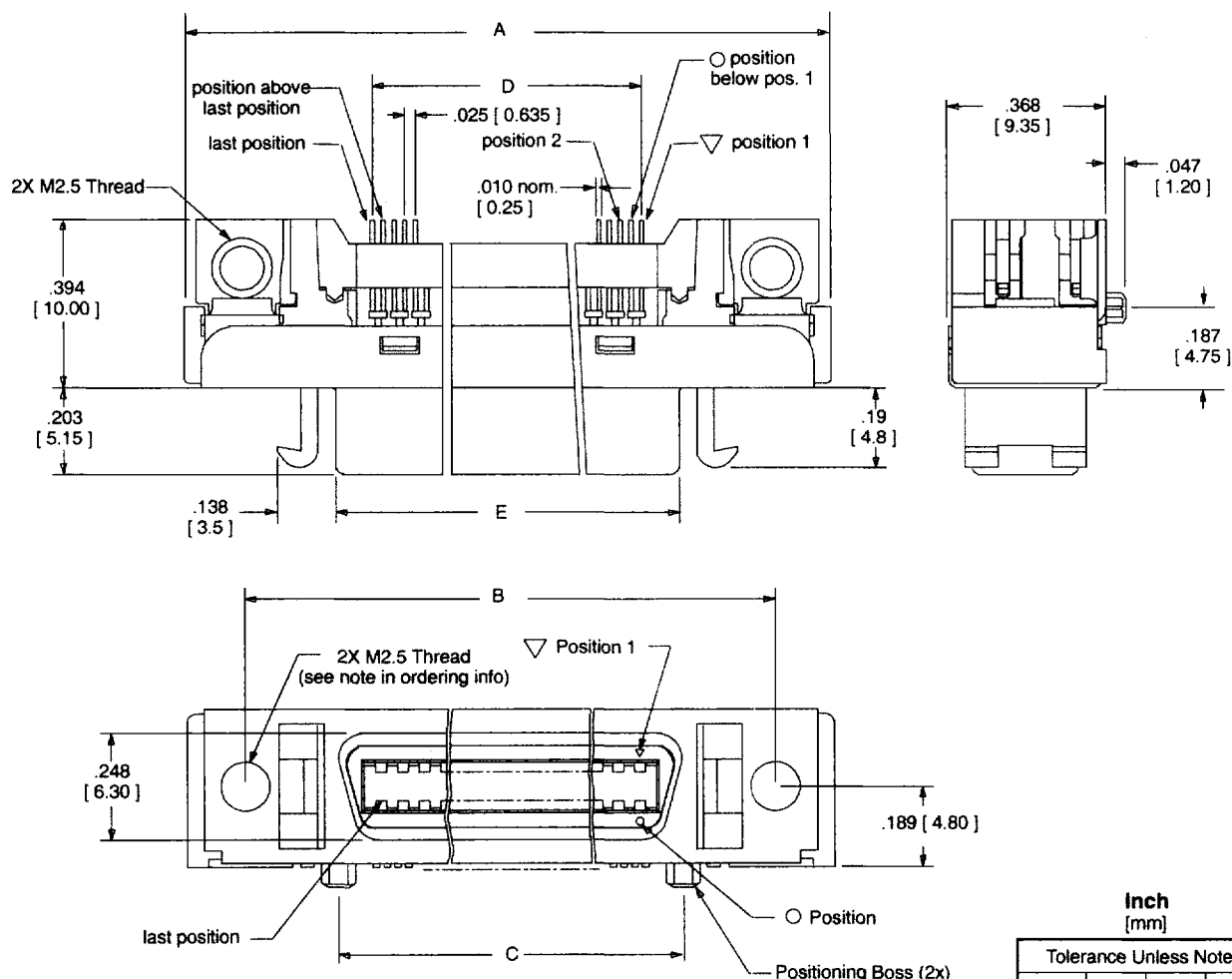
3M Electronic Products Division
6801 River Place Blvd.
Austin, TX 78726-9000

For technical, sales or ordering information call
800-225-5373

.050" Mini D Ribbon (MDR) Connectors Surface Mount Right Angle Receptacle — Shielded

102XX-1210VE Series

Contact Quantity	3M Part Number	Dimensions				
		A±.008	B±.006	C±.006	D±.006	E±.006
20	10220-1210 VE	1.32 33.4	1.081 27.45	.650 16.51	.475 12.07	.646 16.4
26	10226-1210 VE	1.50 38.2	1.231 31.26	.800 20.32	.625 15.88	.795 20.2
40	10240-1210 VE	1.85 47.1	1.581 40.15	1.150 29.21	.975 24.77	1.150 29.2



Inch [mm]			
Tolerance Unless Noted			
	.0	.00	.000
Inch	±.1	±.01	±.005

[] Dimensions for Reference only

Ordering Information

102XX-1210VE

Contact Quantity
(See Table)

Note: Use (M2.5x8mm) screws to mount to panel with max. thickness of 2.0 mm.

TS-0755-05
Sheet 2 of 3

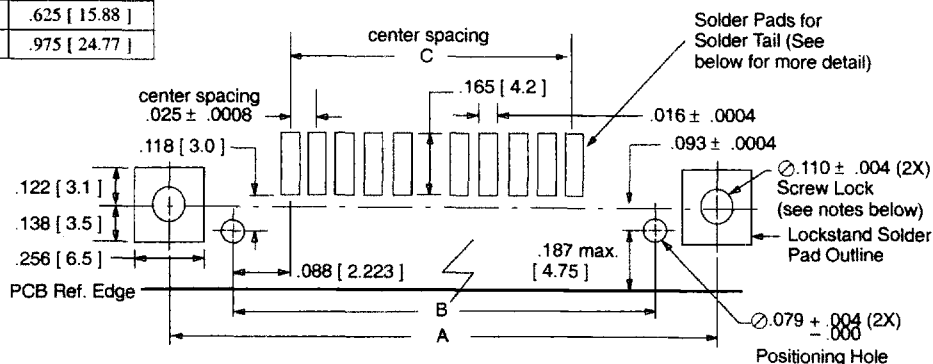
.050" Mini D Ribbon (MDR) Connectors

Surface Mount Right Angle Receptacle — Shielded

102XX-1210VE Series

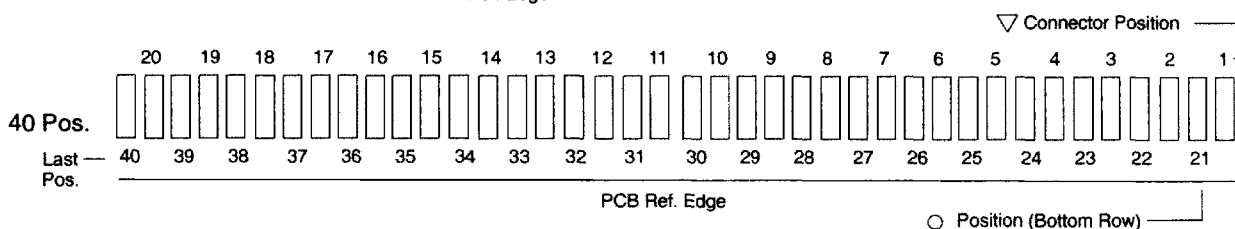
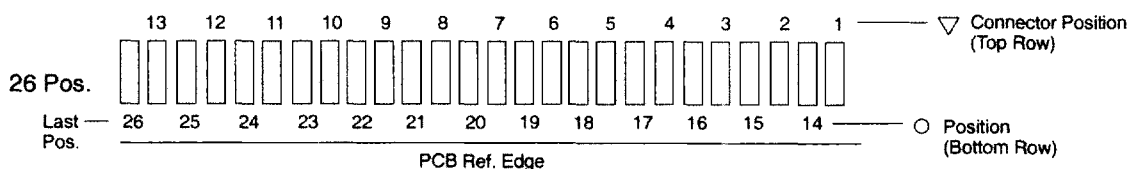
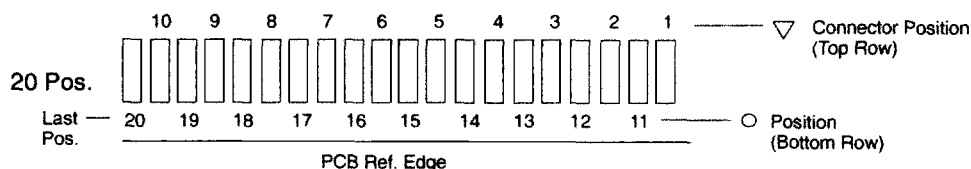
Contact Quantity	Dimensions		
	A ± .002	B ± .002	C ± .002
20	1.081 [27.45]	.650 [16.51]	.475 [12.07]
26	1.230 [31.26]	.800 [20.32]	.625 [15.88]
40	1.581 [40.15]	1.150 [29.21]	.975 [24.77]

Recommended Board Layout (viewed from connector side)



Solder Tail Layout Detail

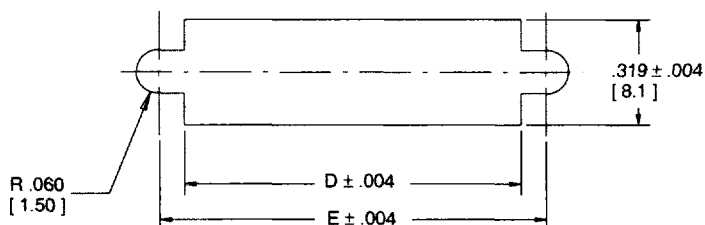
(#'s Correspond to Connector Contact # Shown on Previous Page)



Contact Quantity	Dimensions	
	D	E
20	.94 [23.8]	1.081 [27.45]
26	1.09 [27.6]	1.231 [31.26]
40	1.44 [36.5]	1.581 [40.15]

Recommended Panel Cut-out

Note: Panel thickness .079 [2.00] Max.



**Notes:

1. Plated through holes for .062" board thickness.
2. Use mounting screws (M2.5) to fasten to board.

TS-0755-05
Sheet 3 of 3

3M Electronic Products Division

6801 River Place Blvd.
Austin, TX 78726-9000

For technical, sales or ordering information call
800-225-5373

Mouser Electronics

Authorized Distributor

Click to View Pricing, Inventory, Delivery & Lifecycle Information:

3M:

[10240-1210VE](#)