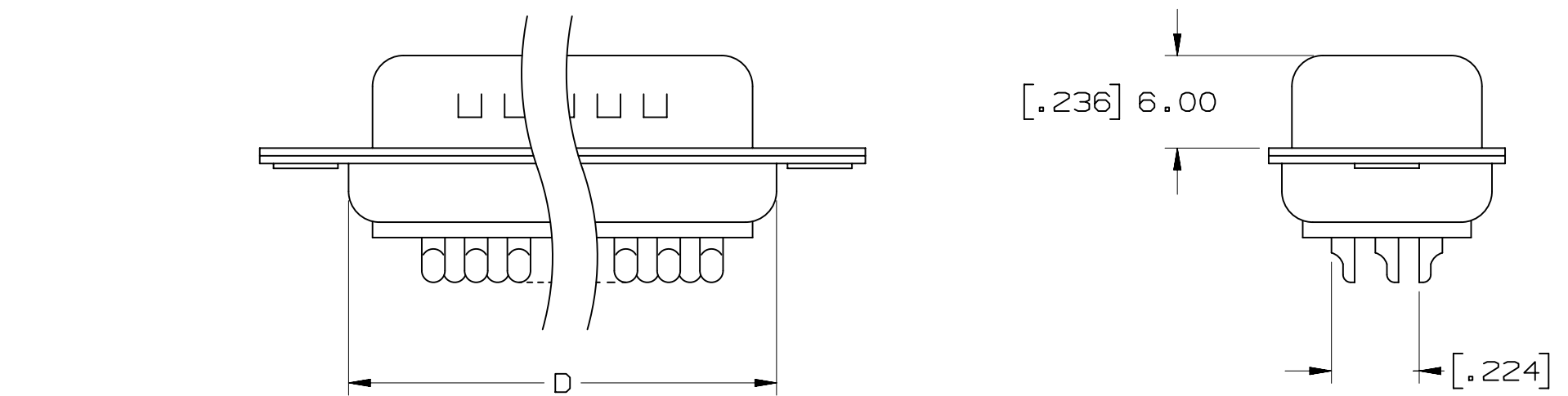
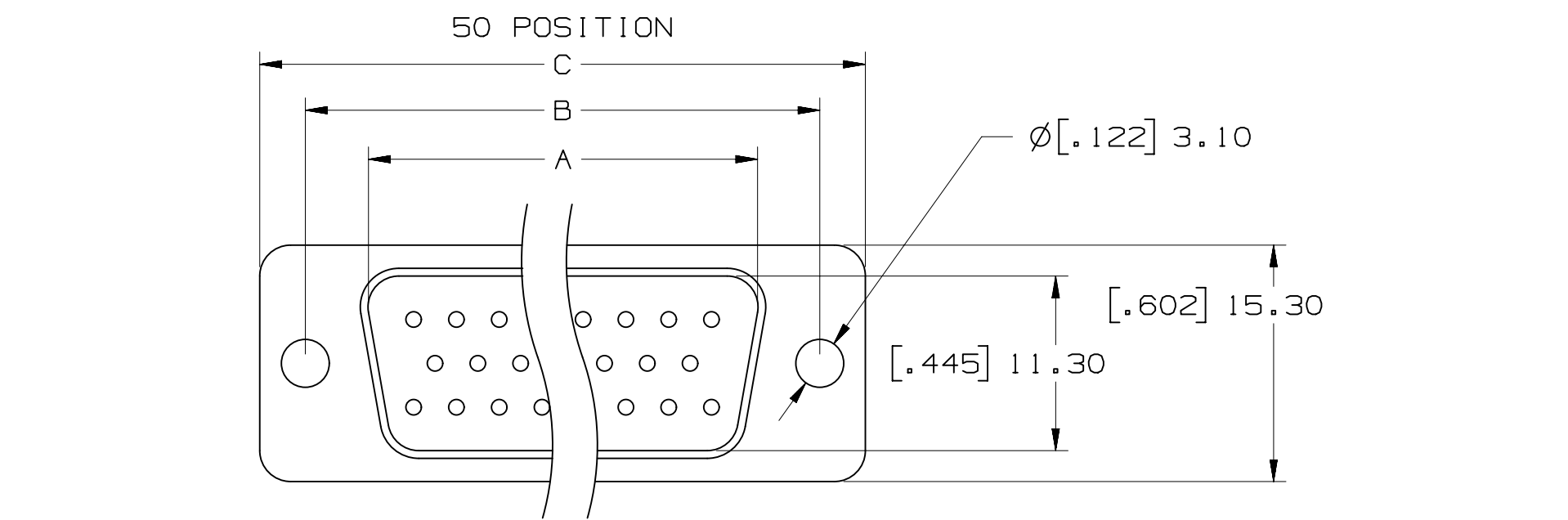
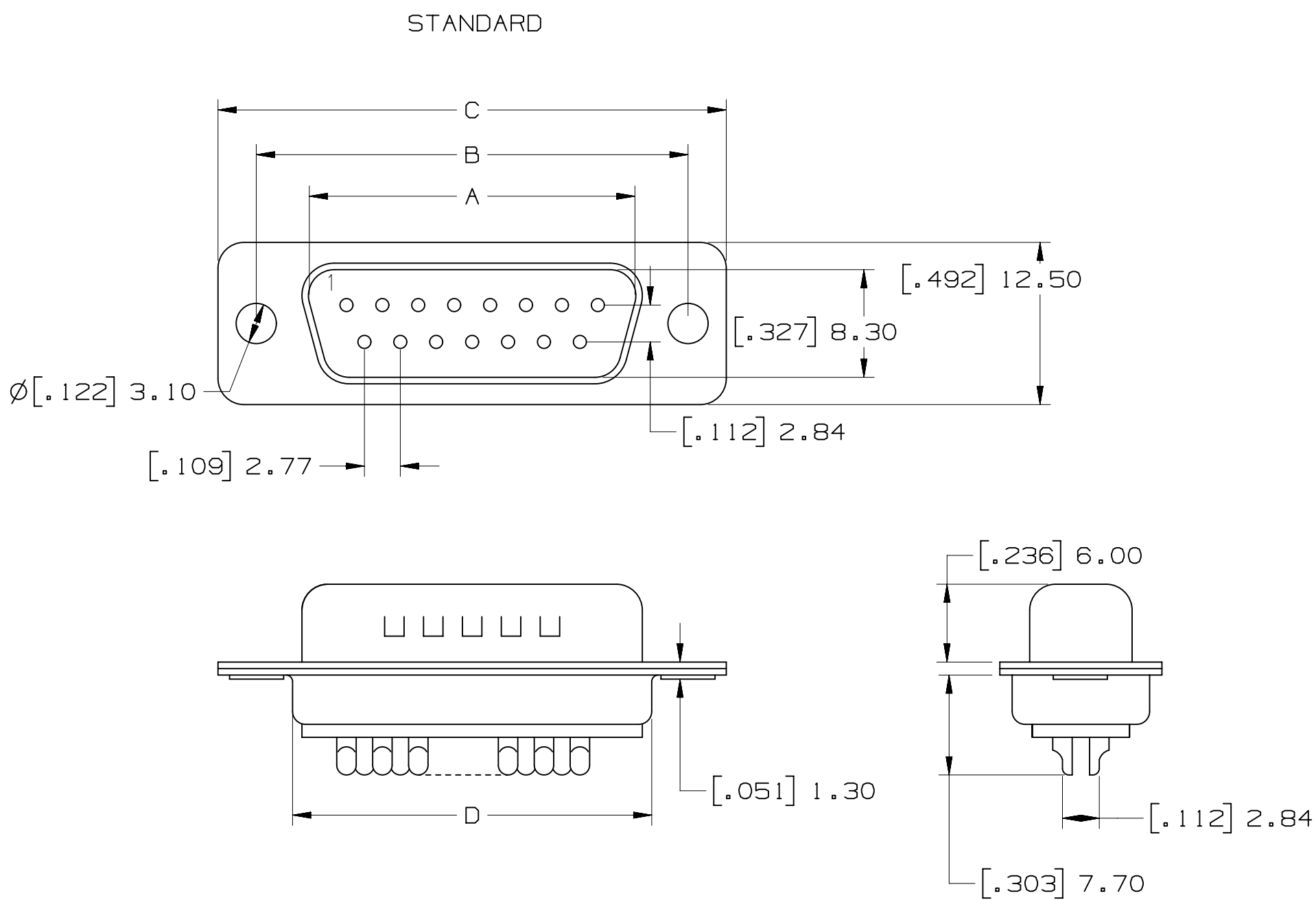
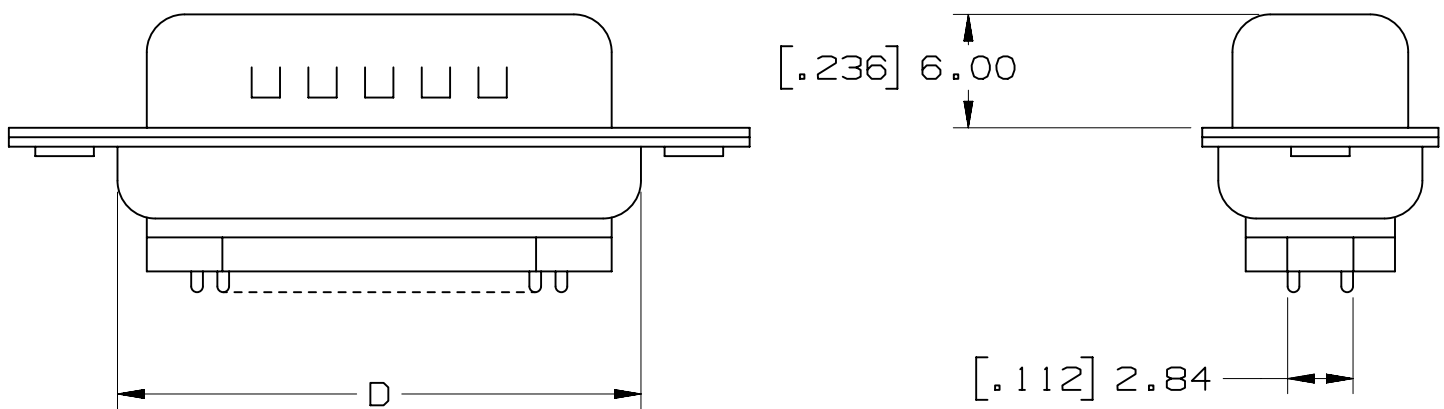
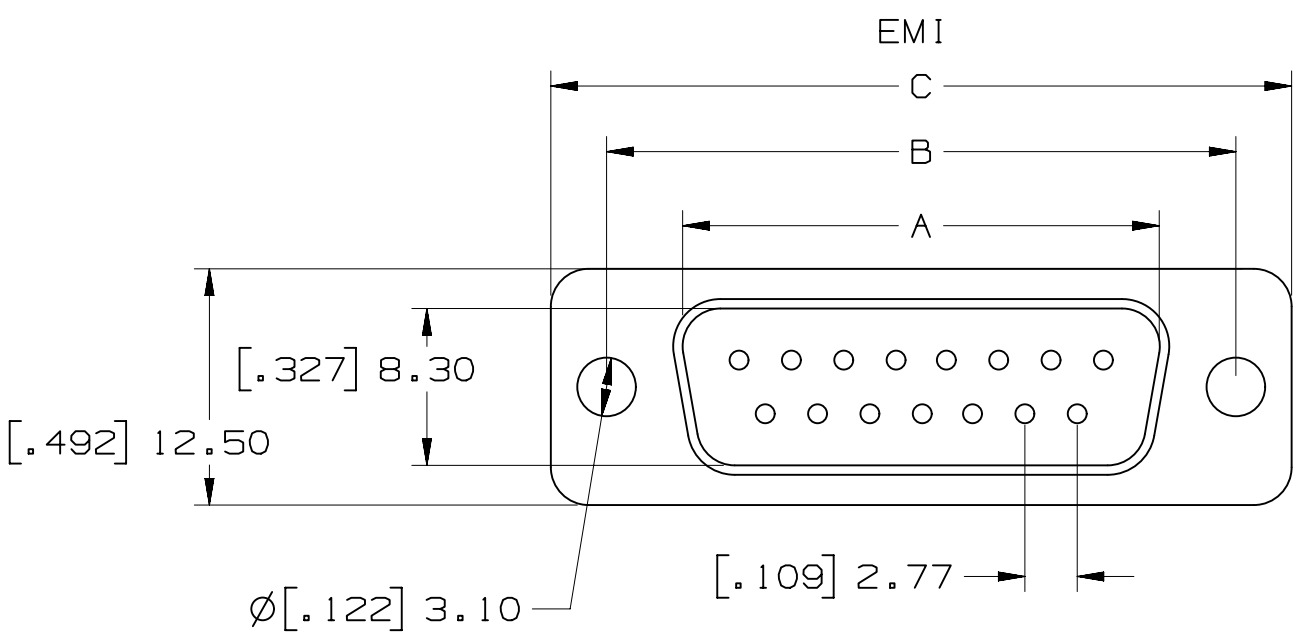


3M™ Solder Cup D Sub Plug, 8000 Series



POSITION	A	B	C	D
09	[.67] 16.92	[.98] 25.0	[1.21] 30.8	[.76] 19.2
15	[.99] 25.25	[1.31] 33.3	[1.54] 39.2	[1.09] 27.7
25	[1.53] 38.96	[1.85] 47.1	[2.09] 53.1	[1.62] 41.1
37	[2.18] 55.42	[2.50] 63.5	[2.73] 69.4	[2.26] 57.3
50*	[2.08] 52.8	[2.41] 61.0	[2.64] 67.0	[2.17] 55.1

*50 POSITION AVAILABLE IN STANDARD ONLY



8PXX - X00X

PLATING
1 - AU FLASH
2 - 30μ" AU

NUMBER OF CONTACTS
(SEE TABLE)

EMI
N - STANDARD
E - EMI

Unless otherwise noted, references to industry specifications are intended to indicate substantial compliance to the material elements of the specification. Such references should not be construed as a guarantee of compliance to all requirements in a given specification.

DESIGN REFERENCE	NEXT ASSEMBLY	REV	ECO	ISSUE DATE AND DESCRIPTION	DRFT	CHKD
DO NOT SCALE DRAWING	SCALE 1/1	TOLERANCES EXCEPT AS NOTED	INCHES	THIRD ANGLE PROJECTION	INTERPRET PER ASME Y14.5 - 1994	MAX SURFACE ROUGHNESS
125	ALL SURFACES	MARKED ONLY	ANGLES ±1°	CAGE NUMBER	SIZE	DRAWING NO.
125	ALL SURFACES	MARKED ONLY	ANGLES ±1°	CAGE NUMBER	SIZE	DRAWING NO.
125	ALL SURFACES	MARKED ONLY	ANGLES ±1°	CAGE NUMBER	SIZE	DRAWING NO.

- NOTES
- MATERIAL:
THERMAL PLASTIC UL94V-0
CONTACTS:
COPPER ALLOY
SHELL:
63141 SPCC OR EQUIVALENT
 - PLATING:
50μ" NICKEL UNDERPLATE
1μ" AU WIPING AREA
30μ" AU WIPING AREA
100-200μ" TIN(BRIGHT TIN)SOLDERTAIL
 - MATES WITH:
8RXX-X00X
 - SEE THE REGULATORY INFORMATION APPENDIX (RIA) IN "RoHS COMPLIANCE" SECTION OF WWW.3MCONNECTOR.COM FOR COMPLIANCE INFORMATION (RIA E1&C1 APPLY)

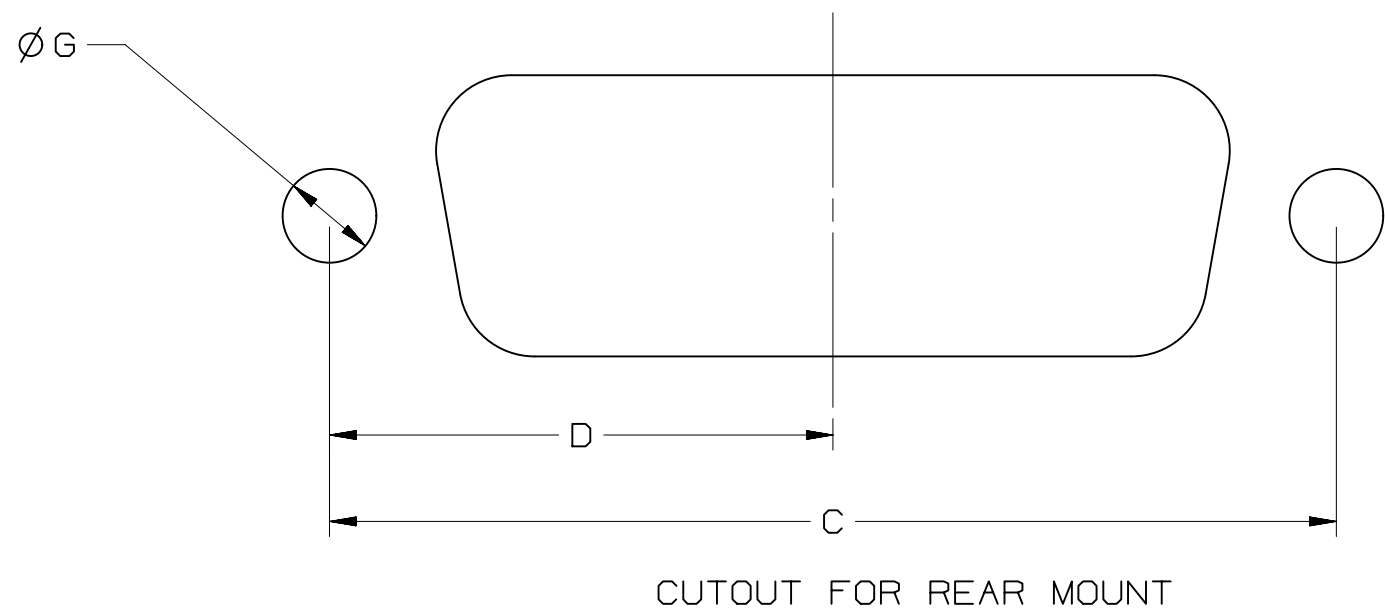
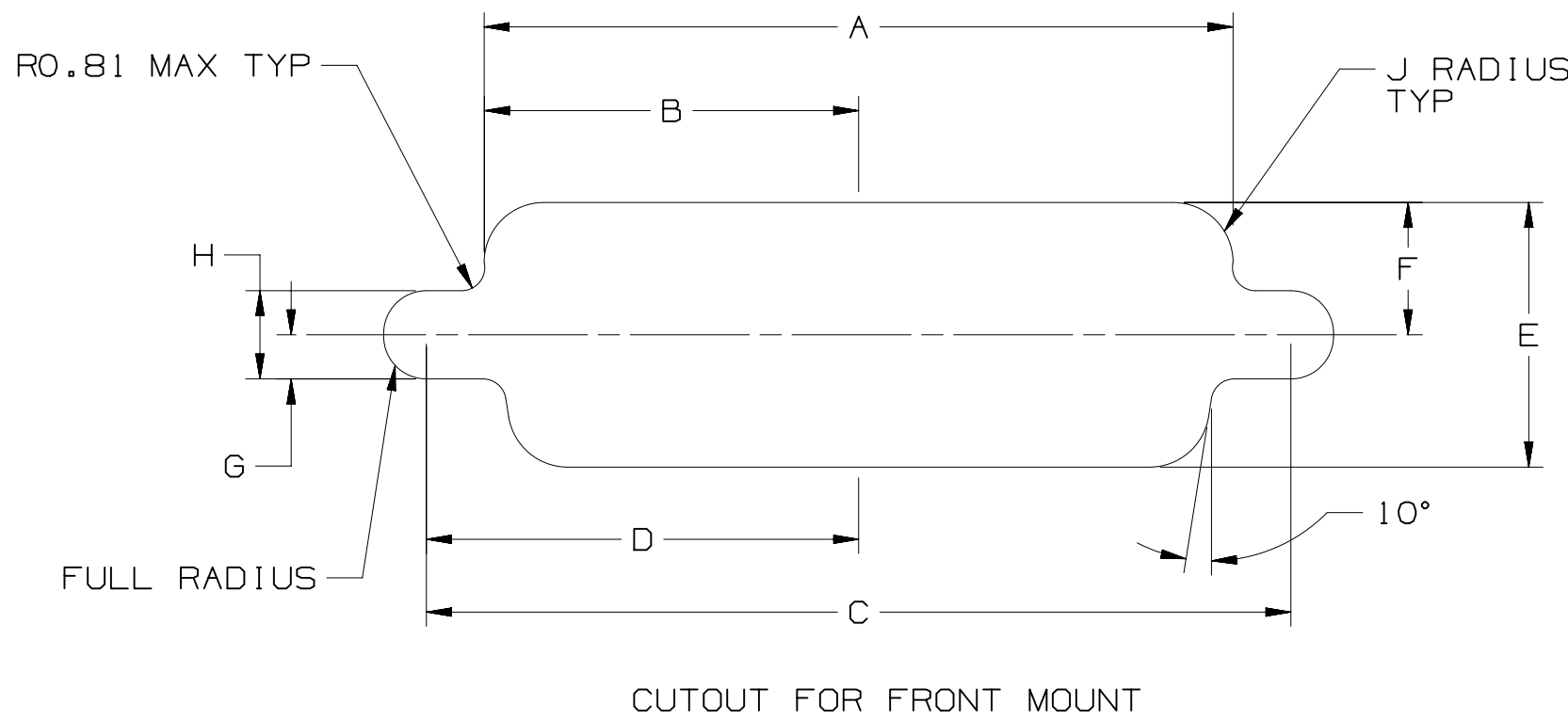
3M ELECTRONIC SOLUTIONS DIVISION
INTERCONNECT SOLUTIONS
<http://www.3mconnectors.com>

3M IS A TRADEMARK OF 3M COMPANY.
FOR TECHNICAL, SALES OR ORDERING
INFORMATION, CALL 800-225-5373

C	46292	MAR 28,2013	CORRECT SHELL MATL	SJS	ARM
B	35416	AUG 29,2011	CHANGE MOHMS TO mOHMS, UPDATE ROHS	SJS	ARM
A	34511	MAY 17,2011	MAY 17, 2011	SJS	ARM

REV	ECO	ISSUE DATE AND DESCRIPTION	DRFT	CHKD
1	1	MAY 17,2011		
2	2	MAY 17,2011		
3	3	MAY 17,2011		
4	4	MAY 17,2011		
5	5	MAY 17,2011		
6	6	MAY 17,2011		
7	7	MAY 17,2011		
8	8	MAY 17,2011		
9	9	MAY 17,2011		
10	10	MAY 17,2011		
11	11	MAY 17,2011		
12	12	MAY 17,2011		
13	13	MAY 17,2011		
14	14	MAY 17,2011		
15	15	MAY 17,2011		
16	16	MAY 17,2011		
17	17	MAY 17,2011		
18	18	MAY 17,2011		
19	19	MAY 17,2011		
20	20	MAY 17,2011		
21	21	MAY 17,2011		
22	22	MAY 17,2011		
23	23	MAY 17,2011		
24	24	MAY 17,2011		
25	25	MAY 17,2011		
26	26	MAY 17,2011		
27	27	MAY 17,2011		
28	28	MAY 17,2011		
29	29	MAY 17,2011		
30	30	MAY 17,2011		
31	31	MAY 17,2011		
32	32	MAY 17,2011		
33	33	MAY 17,2011		
34	34	MAY 17,2011		
35	35	MAY 17,2011		
36	36	MAY 17,2011		
37	37	MAY 17,2011		
38	38	MAY 17,2011		
39	39	MAY 17,2011		
40	40	MAY 17,2011		
41	41	MAY 17,2011		
42	42	MAY 17,2011		
43	43	MAY 17,2011		
44	44	MAY 17,2011		
45	45	MAY 17,2011		
46	46	MAY 17,2011		
47	47	MAY 17,2011		
48	48	MAY 17,2011		
49	49	MAY 17,2011		
50	50	MAY 17,2011		

POSITION	MOUNTING METHOD	A	B	C	D	E	F	G	H	J
9	FRONT	.874[22.2]	.437[11.1]	.984[25.0]	.492[12.5]	.513[13.0]	.257[6.5]	.120[3.1]	.060[1.5]	.083[2.1]
	REAR	.806[20.5]	.403[10.2]	.984[25.0]	.492[12.5]	.449[11.4]	.225[5.7]	.120[3.1]	.060[1.5]	.132[3.4]
15	FRONT	1.202[30.5]	.601[15.3]	1.312[33.3]	.656[16.7]	.513[13.0]	.257[6.5]	.120[3.1]	.060[1.5]	.083[2.1]
	REAR	1.134[28.8]	.567[14.4]	1.312[33.3]	.656[16.7]	.449[11.4]	.225[5.7]	.120[3.1]	.060[1.5]	.132[3.4]
25	FRONT	1.743[44.3]	.872[22.2]	1.852[47.0]	.926[23.5]	.513[13.0]	.257[6.5]	.120[3.1]	.060[1.5]	.083[2.1]
	REAR	1.674[42.5]	.837[21.3]	1.852[47.0]	.926[23.5]	.449[11.4]	.225[5.7]	.120[3.1]	.060[1.5]	.132[3.4]
37	FRONT	2.391[60.7]	1.196[30.4]	2.500[63.5]	1.250[31.8]	.513[13.0]	.257[6.5]	.120[3.1]	.060[1.5]	.083[2.1]
	REAR	2.326[59.1]	1.163[29.5]	2.500[63.5]	1.250[31.8]	.449[11.4]	.225[5.7]	.120[3.1]	.060[1.5]	.132[3.4]
50	FRONT	2.297[58.3]	1.149[29.2]	2.406[61.1]	1.203[30.6]	.623[15.8]	.312[7.9]	.120[3.1]	.060[1.5]	.083[2.1]
	REAR	2.218[56.3]	1.109[28.2]	2.406[61.1]	1.203[30.6]	.555[14.1]	.278[7.1]	.120[3.1]	.060[1.5]	.132[3.4]



		C		46292		MAR 28, 2013		SJS		ARM	
		B		35416		AUG 29, 2011		SJS		ARM	
		A		34511		MAY 17, 2011		SJS		ARM	
						MAY 17, 2011					
DESIGN REFERENCE				NEXT ASSEMBLY				REV		ECO	
AKS				CODES				DWT		SJS	
								DATE		MAY 17, 2011	
								MFG		DATE	
								APPR		DATE	
DIVISION				DIVISION CODE				DATE		MAY 17, 2011	
DO NOT SCALE DRAWING				SCALE 1 1				TOLERANCES EXCEPT AS NOTED			
								INCHES			
THIRD ANGLE PROJECTION								.00 ± .005 .000 ± .005			
INTERPRET PER ASME Y14.5 - 1994								MILLIMETERS 0 ± .1			
MAX SURFACE ROUGHNESS 125								.00 ± .05 .000 ± .005			
<input type="checkbox"/> ALL SURFACES								ANGLES ± 1 °			
<input checked="" type="checkbox"/> MARKED ONLY											
<div>3M</div> <div>3M Center St. Paul, MN 55144</div> <div>© 3M COPYR[IGHT] 2013 This document and the information it contains are 3M property and may not be reproduced or further distributed without 3M permission, or used or disclosed other than for 3M authorized purposes. All rights reserved.</div>											
TITLE 8PXX-X00X D-SUB SOLDER CUP PLUG TS-2357											
CAGE NUMBER		SIZE		DRAWING NO.		REV.					
D		BP		78-5100-2357-1		C					
MODEL		DET.		LISTS		YES		NO		SHT 2 OF 2	

Mouser Electronics

Authorized Distributor

Click to View Pricing, Inventory, Delivery & Lifecycle Information:

[3M:](#)

[8P25-N001](#)