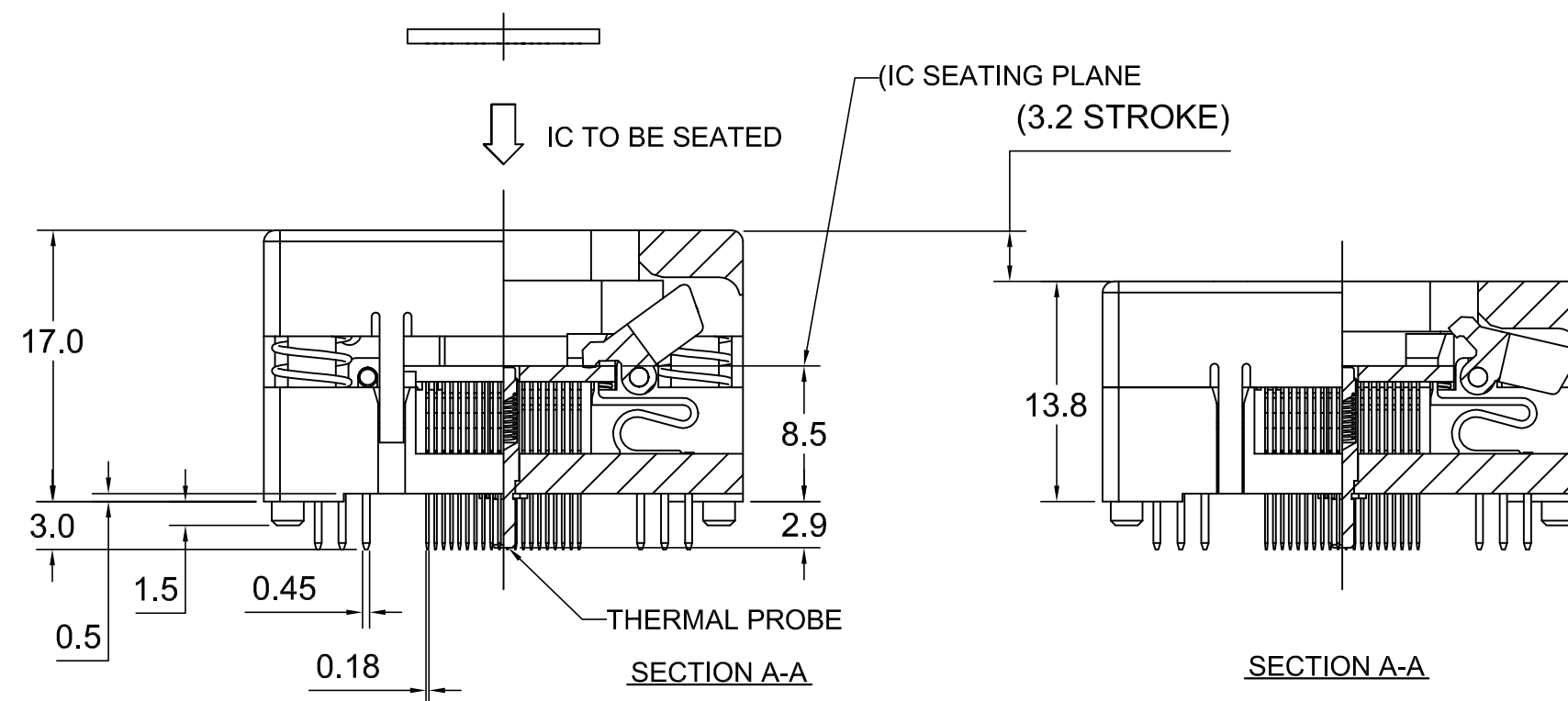
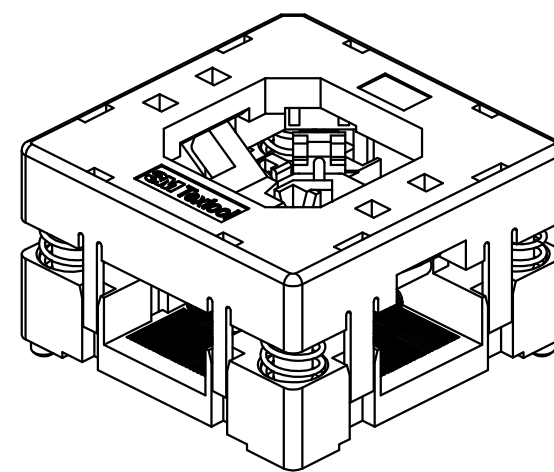
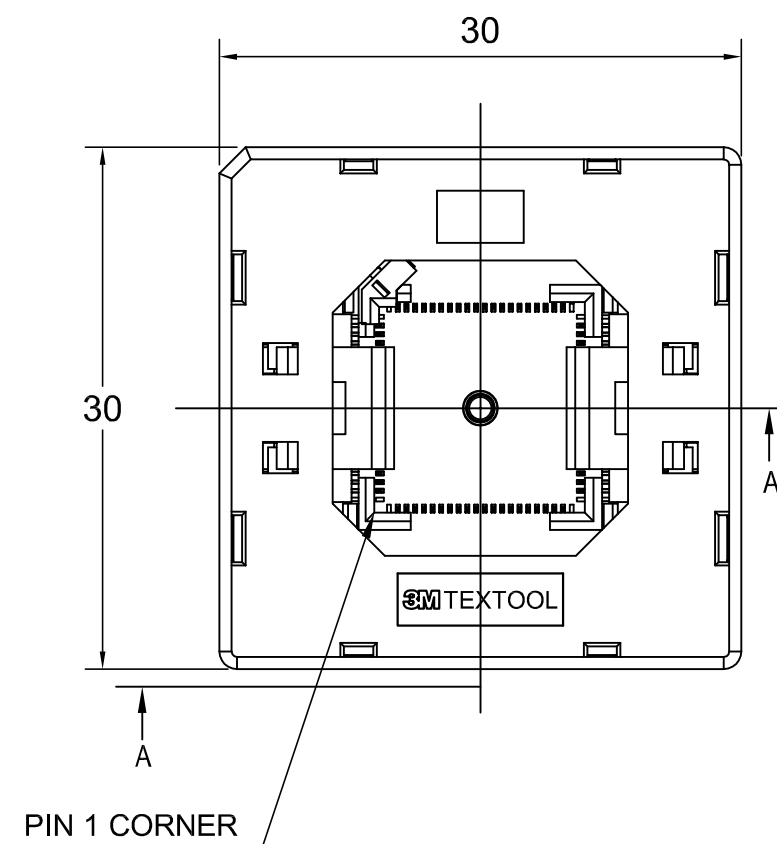


3M™ TEXTTOOL™ OPEN-TOP SOCKETS FOR QFN APPLICATIONS



NOTES:

1. MATERIALS:
- | | | |
|--------------|---------------|---------------|
| SPRINGS | SS | |
| CONTACTS | Be Cu | PLATING : Au |
| IC GUIDES | PES | COLOR : BLACK |
| PRESSURE PAD | PES | COLOR : BLACK |
| COVER | PPS or equiv. | COLOR : BLACK |
| BASE | PES | COLOR : BLACK |
2. SEE THE REGULATORY INFORMATION APPENDIX (RIA) IN THE "RoHS COMPLIANCE" SECTION WWW.3MCONNECTOR.COM FOR COMPLIANCE INFORMATION (RIA E1 & C1 APPLY).
3. FOR PRODUCT SPECIFICATIONS AND WARRANTY INFORMATION SEE: WWW.3MCONNECTOR.COM PN 280-5205-01

B	53964	ADDED PINOUT ON SHT 2	LDS	BG
A	37213	INITIAL RELEASE	ARM	

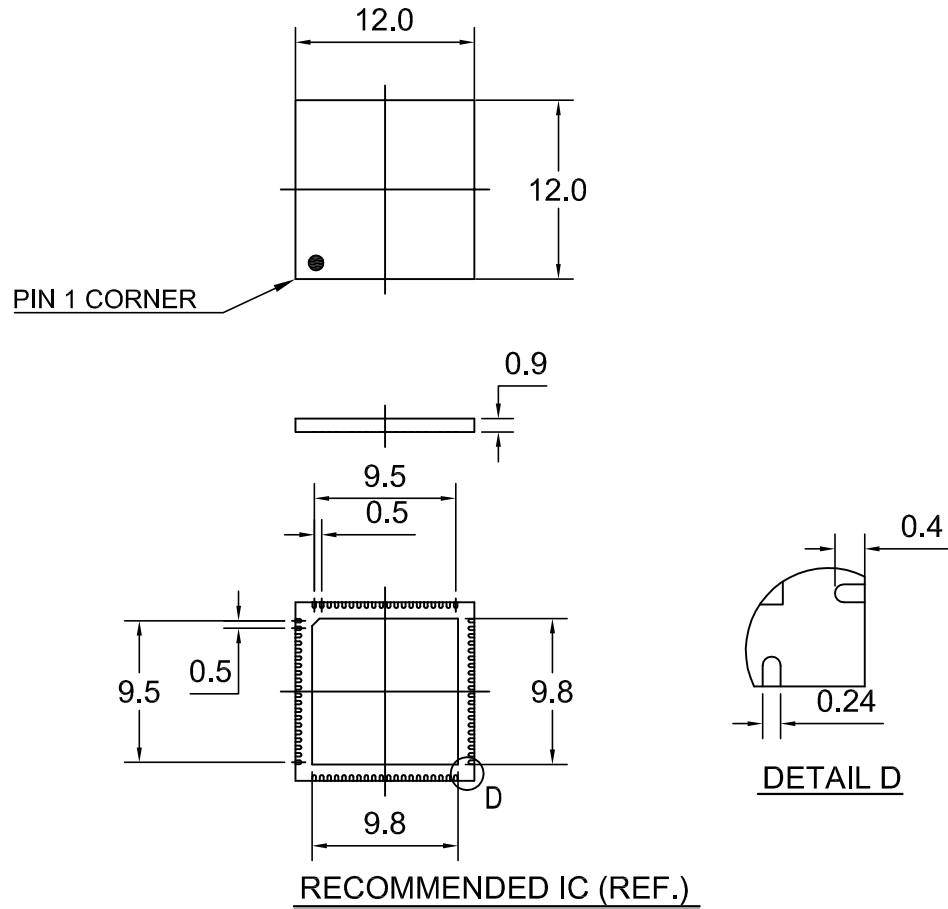
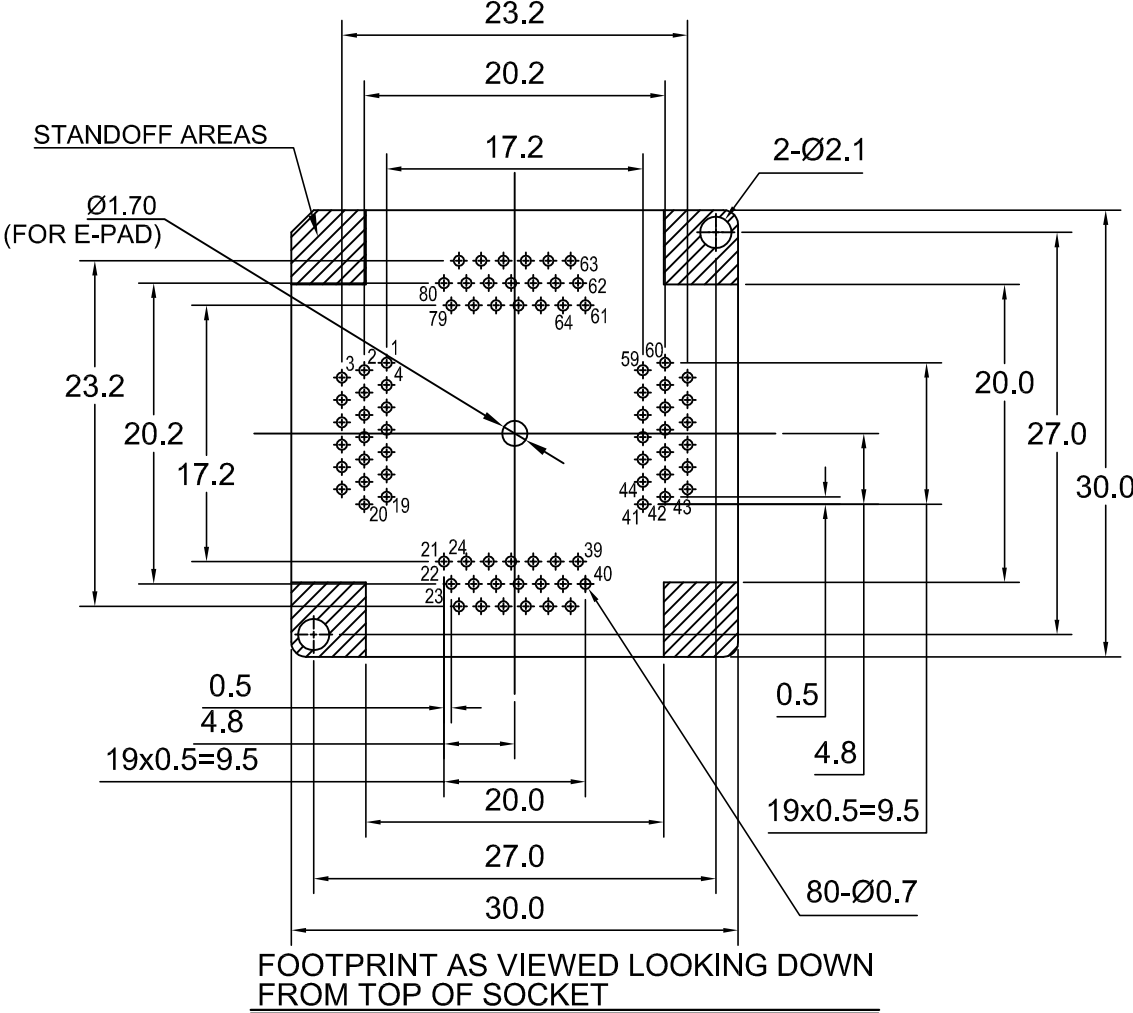
REV	ECO	ISSUE DATE AND DESCRIPTION	DRFT	CHKD
DRFT	DATE	MFG	DATE	
CHKD	DATE	APPVL	DATE	

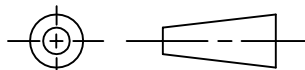
3M	3M Center St. Paul, MN 55144	© 3M COPYRIGHT 2014 This document is the copyrighted property of the 3M Company and may not be reproduced without 3M written permission or used for other than 3M authorized purposes.
-----------	------------------------------------	--

TITLE QFN TEST SOCKET, 0.5mm 80 POS, EVEN ROW, 12x12 PKG WITH TP			
---	--	--	--

CAGE NUMBER	SIZE C	DRAWING NO. 78-5100-2476-9	REV. B
MODEL	TEXTTOOL - QFN	DET. LISTS	SHT 1 OF 2

3M™ TEXTTOOL™ OPEN-TOP SOCKETS FOR QFN APPLICATIONS



DESIGN REFERENCE				NEXT ASSEMBLY				REV	ECO	ISSUE DATE AND DESCRIPTION				DRFT	CHKD		
DISTRIBUTION CODES								DRFT		DATE		MFG		DATE			
								CHKD		DATE		APPVL		DATE			
DIVISION				DIVISION CODE				<div>3M Center St. Paul, MN 55144</div> <div>© 3M COPYRIGHT 2014 This document is the copyrighted property of the 3M Company and may not be reproduced without 3M written permission or used for other than 3M authorized purposes.</div>									
DO NOT SCALE DRAWING		SCALE 5 1		TOLERANCES EXCEPT AS NOTED													
 THIRD ANGLE PROJECTION				INCHES				TITLE <div>QFN TEST SOCKET, 0.5mm 80 POS, EVEN ROW, 12x12 PKG WITH TP</div>									
				.0 ± .1 .00 ± .02 .000 ± .005 .0000 ± .0002													
INTERPRET PER ASME Y14.5 - 1994				MILLIMETERS				CAGE NUMBER SIZE DRAWING NO. REV.									
MAX SURFACE ROUGHNESS 125 ✓ ☐ ALL SURFACES ☑ MARKED ONLY				0 ± .1 .00 ± .005 .000 ± .0002													
				ANGLES ± 1°				MODEL				TEXTTOOL - QFN		DET. LISTS ☐ YES ☑ NO		SHT 2 OF 2	

Mouser Electronics

Authorized Distributor

Click to View Pricing, Inventory, Delivery & Lifecycle Information:

3M:

[280-5205-01](#)