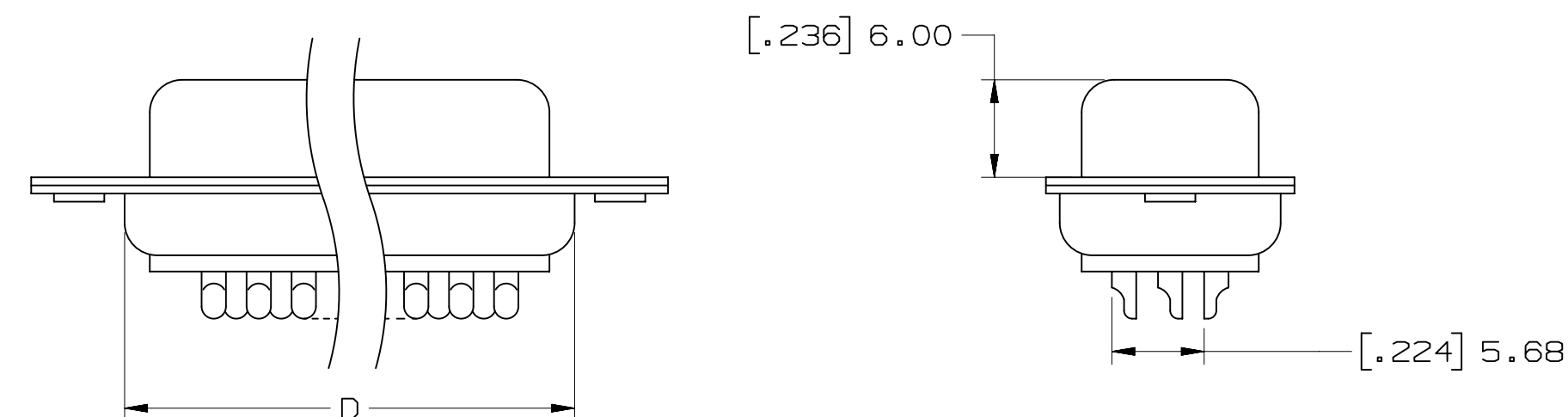
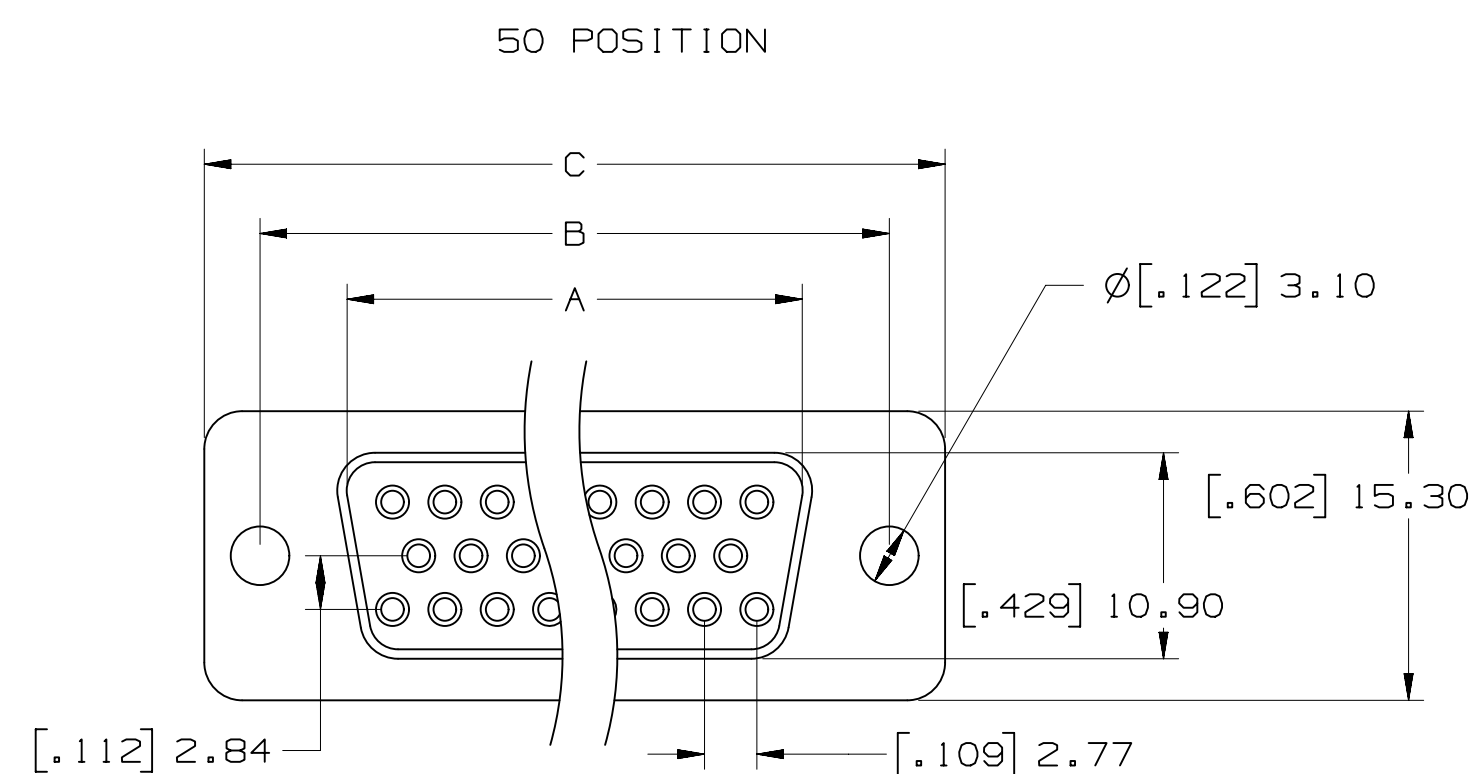
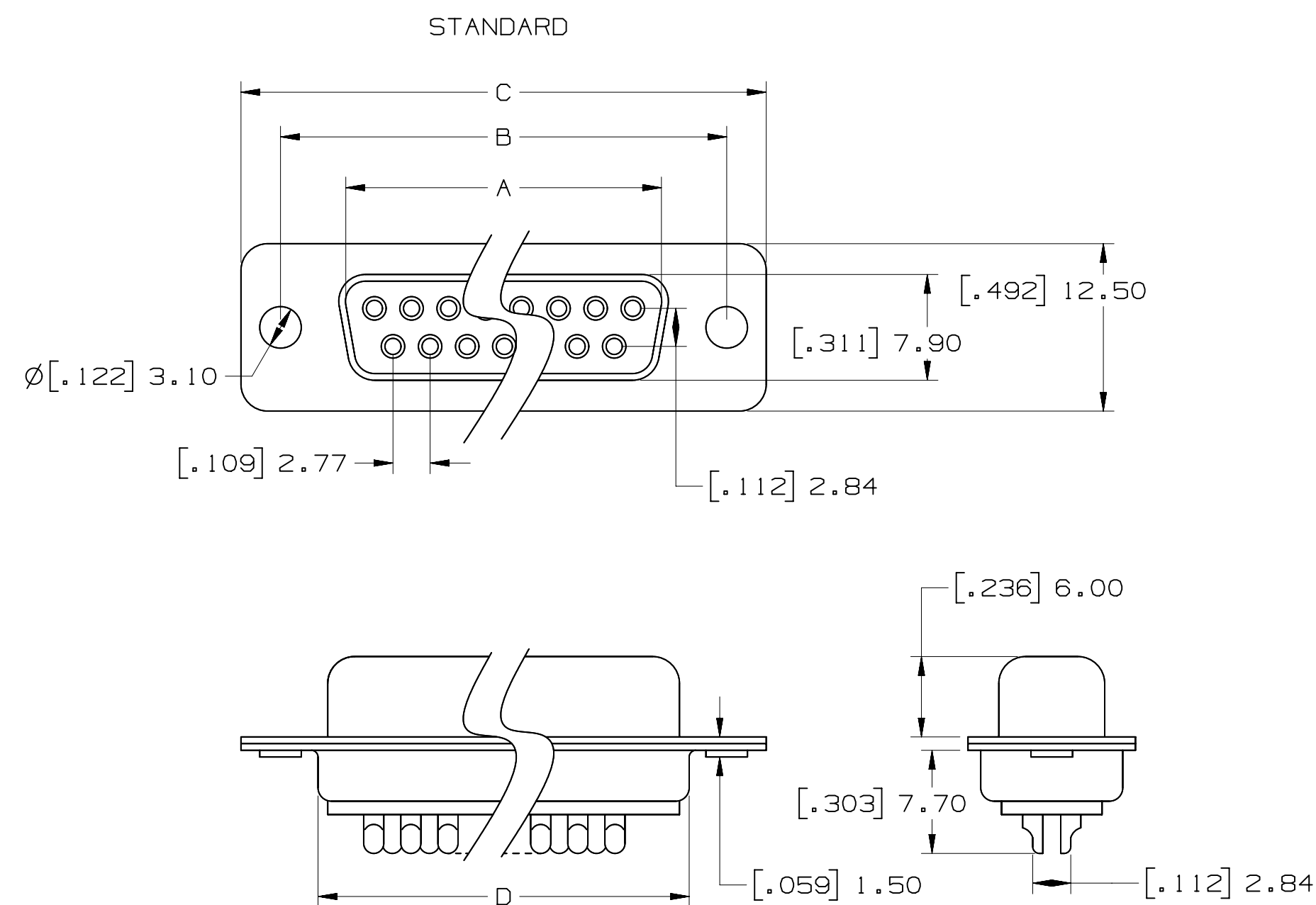


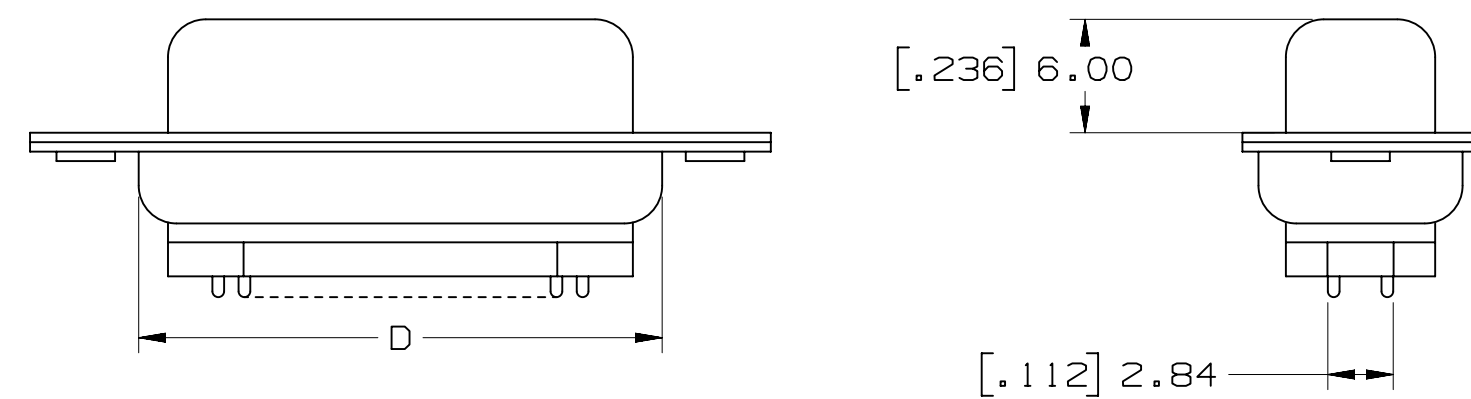
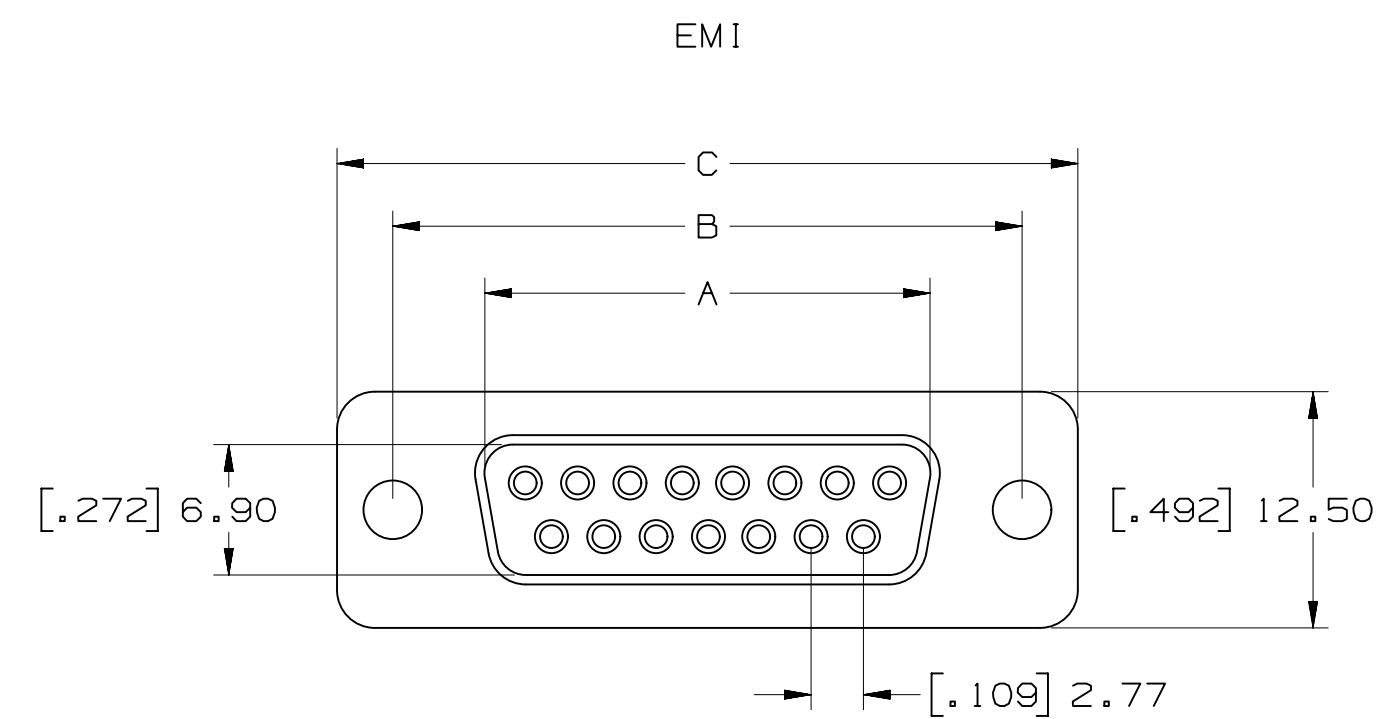
3M™ Solder Cup D Sub Socket, 8000 Series



POSITION	A	B	C	D
9	[.642] 16.30	[.984] 25.00	[1.213] 30.80	[.756] 19.20
15	[.969] 24.60	[1.311] 33.30	[1.543] 39.20	[1.091] 27.70
25	[1.508] 38.30	[2.248] 57.10	[2.091] 53.10	[1.618] 41.10
37	[2.157] 54.80	[2.500] 63.50	[2.732] 69.40	[2.256] 57.30
50*	[2.055] 52.20	[2.402] 61.00	[2.638] 67.00	[2.169] 55.10

*50 POSITION AVAILABLE IN STANDARD ONLY

PERFORMANCE	
OPERATION VOLTAGE:	250V MAX.
CURRENT:	3A MAX.
INSULATION RESISTANCE:	3000 MΩhm MIN @ 500VDC
WITHSTANDING VOLTAGE:	1000 VAC / MIN.
TEMPERATURE RATING:	-55°C to 105°C
CONTACT RESISTANCE:	15 mΩhms MAX.




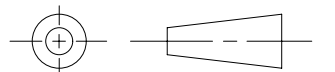

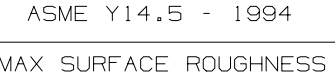
8RXX - X00X

NUMBER OF
CONTACTS —
(SEE TABLE)

PLATING
1 - AU FLASH
2 - 30 μ " AU

EMI
N - STANDARD
E - EMI

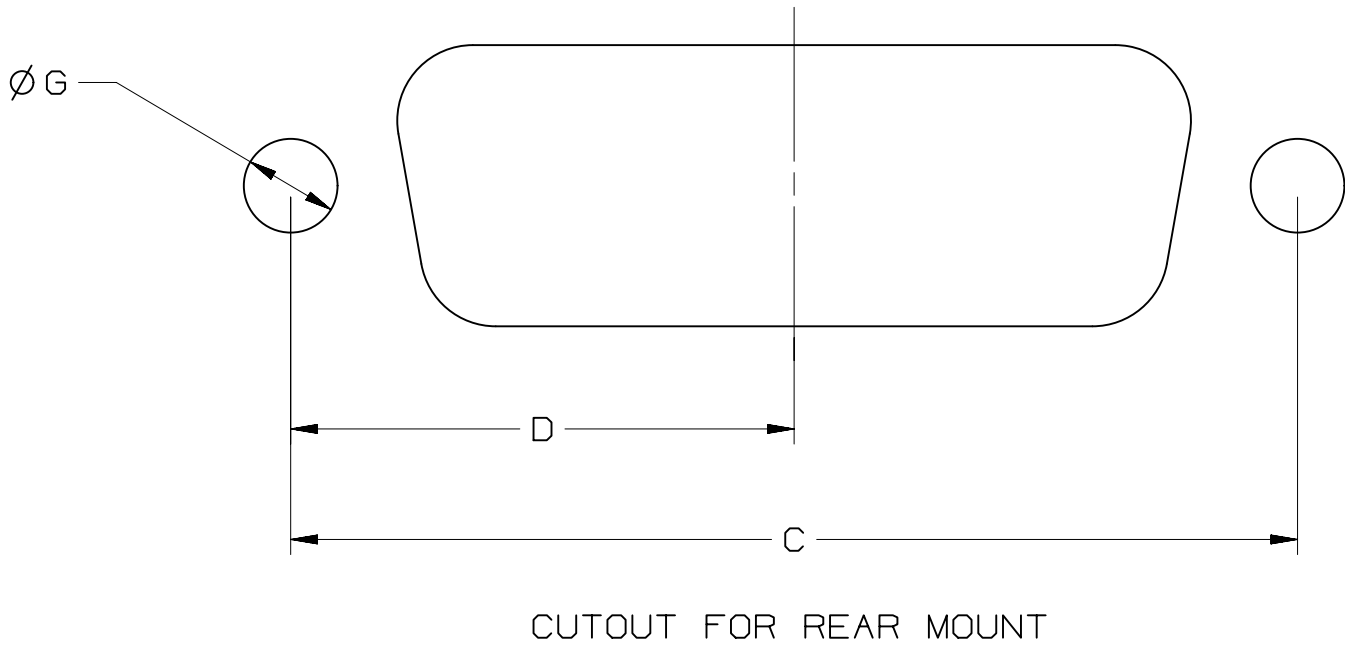
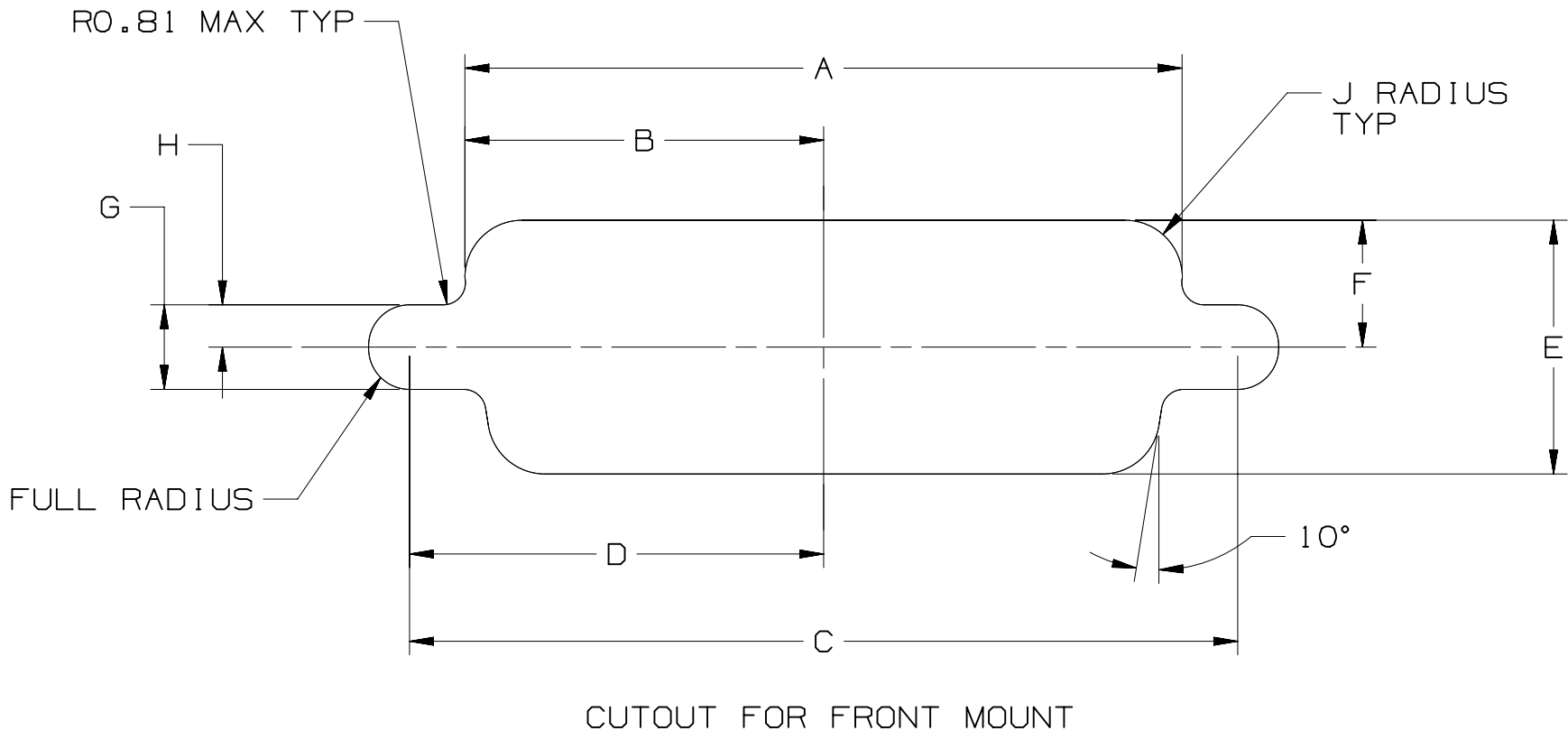
Unless otherwise noted, references to industry specifications are intended to indicate substantial compliance to the material elements of the specification. Such references should not be construed as a guarantee of compliance to all requirements in a given specification.

DESIGN REFERENCE		NEXT ASSEMBLY		REV		ECO		ISSUE DATE AND DESCRIPTION		DRFT		CHKD	
ACCESS CODES				DRFT SJS		DATE MAY 18, 2011		MFG DATE					
				CHKD ARM		DATE MAY 18, 2011		APPRVL DATE					
DIVISION		DIVISION CODE											
DO NOT SCALE DRAWING		SCALE 1 1		TOLERANCES EXCEPT AS NOTED									
						3M Center St. Paul, MN 55144		© 3M COPYRIGHT 2013 This document and the information it contains are 3M property and may not be reproduced or further distributed without 3M permission or, used or disclosed other than for 3M authorized purposes. All rights reserved.					
						INCHES .01 ± .00 ± .0001 ± .0000 ±		TITLE 8RXX-X00X D-SUB SOLDER CUP SOCKET TS-2402					
						MILLIMETERS .01 ± .00 ± .005 ± .0005 ±		CAGE NUMBER D 78-5100-2402-5		REV. C			
MAX SURFACE ROUGHNESS 125 <input type="checkbox"/> ALL SURFACES <input checked="" type="checkbox"/> MARKED ONLY				ANGLES ± 1°		MODEL BR		DET. LISTS <input type="checkbox"/> YES <input checked="" type="checkbox"/> NO		SHT 1 OF 2			

3M ELECTRONIC SOLUTIONS DIVISION
INTERCONNECT SOLUTIONS
<http://www.3mconnectors.com>

3M IS A TRADEMARK OF 3M COMPANY.
FOR TECHNICAL, SALES OR ORDERING
INFORMATION, CALL 800-225-5373

POSITION	MOUNTING METHOD	A	B	C	D	E	F	G	H	J
9	FRONT	.874[22.2]	.437[11.1]	.984[25.0]	.492[12.5]	.513[13.0]	.257[6.5]	.120[3.1]	.060[1.5]	.083[2.1]
	REAR	.806[20.5]	.403[10.2]	.984[25.0]	.492[12.5]	.449[11.4]	.225[5.7]	.120[3.1]	.060[1.5]	.132[3.4]
15	FRONT	1.202[30.5]	.601[15.3]	1.312[33.3]	.656[16.7]	.513[13.0]	.257[6.5]	.120[3.1]	.060[1.5]	.083[2.1]
	REAR	1.134[28.8]	.567[14.4]	1.312[33.3]	.656[16.7]	.449[11.4]	.225[5.7]	.120[3.1]	.060[1.5]	.132[3.4]
25	FRONT	1.743[44.3]	.872[22.2]	1.852[47.0]	.926[23.5]	.513[13.0]	.257[6.5]	.120[3.1]	.060[1.5]	.083[2.1]
	REAR	1.674[42.5]	.837[21.3]	1.852[47.0]	.926[23.5]	.449[11.4]	.225[5.7]	.120[3.1]	.060[1.5]	.132[3.4]
37	FRONT	2.391[60.7]	1.196[30.4]	2.500[63.5]	1.250[31.8]	.513[13.0]	.257[6.5]	.120[3.1]	.060[1.5]	.083[2.1]
	REAR	2.326[59.1]	1.163[29.5]	2.500[63.5]	1.250[31.8]	.449[11.4]	.225[5.7]	.120[3.1]	.060[1.5]	.132[3.4]
50	FRONT	2.297[58.3]	1.149[29.2]	2.406[61.1]	1.203[30.6]	.623[15.8]	.312[7.9]	.120[3.1]	.060[1.5]	.083[2.1]
	REAR	2.218[56.3]	1.109[28.2]	2.406[61.1]	1.203[30.6]	.555[14.1]	.278[7.1]	.120[3.1]	.060[1.5]	.132[3.4]



		C		46292	MAR 28, 2013		SJS		ARM	
		B		34516	CORRECT SHELL MATL AUG 29, 2011		SJS		ARM	
		A		34511	CHANGE MOHMS TO MOHMS, UPDATE ROHS MAY 18, 2011		SJS		ARM	
		REV		ECO	ISSUE DATE AND DESCRIPTION				DRFT	CHKD
XREF CODES		SJS		DATE MAY 18, 2011				MFG	DATE	
		CHKD ARM		DATE MAY 18, 2011				APPRVL	DATE	
DIVISION		DIVISION CODE		© 3M COPYR[IGHT] 2013						
DO NOT SCALE DRAWING		SCALE 1 1		3M Center St. Paul, MN 55144		This document and the information it contains are 3M property and may not be reproduced or further distributed without 3M permission, or used or disclosed other than for 3M authorized purposes. All rights reserved.				
		THIRD ANGLE PROJECTION		TITLE						
INTERPRET PER ASME Y14.5 - 1994		TOLERANCES EXCEPT AS NOTED		8RXX-X00X D-SUB SOLDER CUP SOCKET TS-2402						
MAX SURFACE ROUGHNESS 125		MILLIMETERS 0 ± .1		CAGE NUMBER D						
<input type="checkbox"/> ALL SURFACES		INCHES 0 ± .00 ± .002 ± .0000		SIZE DRAWING NO. 78-5100-2402-5						
<input checked="" type="checkbox"/> MARKED ONLY		ANGLES ± 1 °		REV. C						
				MODEL BR		DET LISTS		YES <input type="checkbox"/> NO <input checked="" type="checkbox"/>		
								SHT 2 OF 2		

Mouser Electronics

Authorized Distributor

Click to View Pricing, Inventory, Delivery & Lifecycle Information:

3M:

[8R09-N001](#) [7010500450](#)