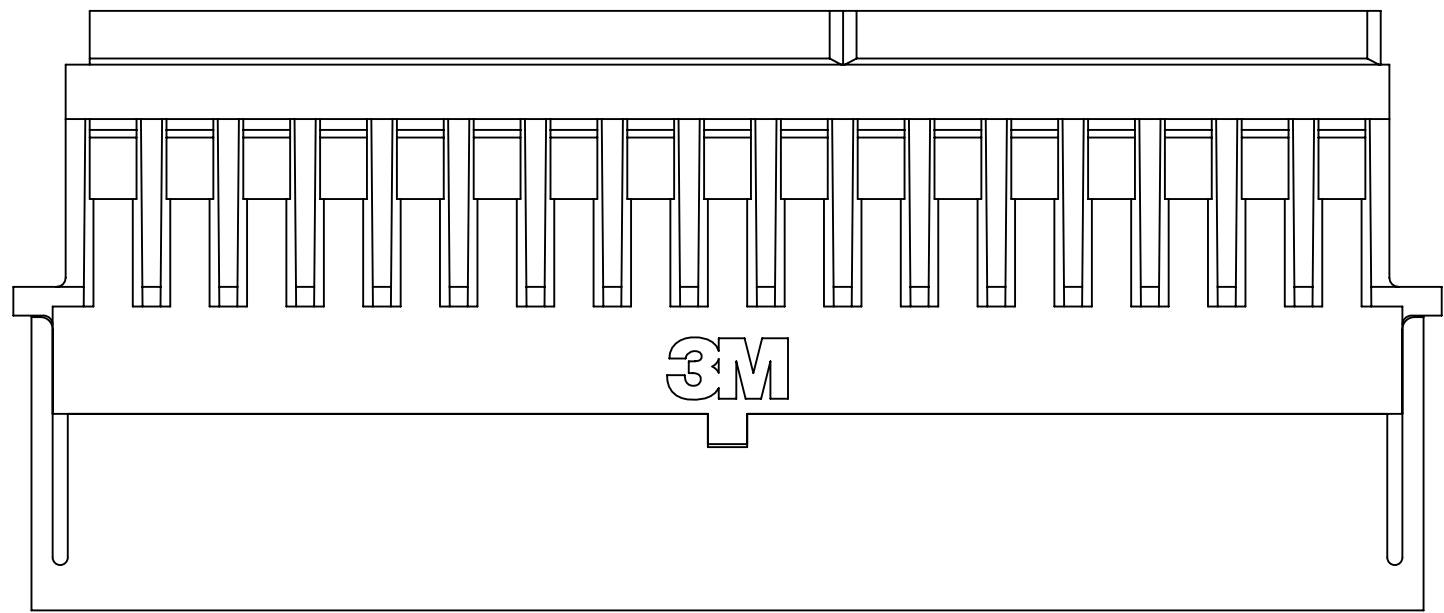
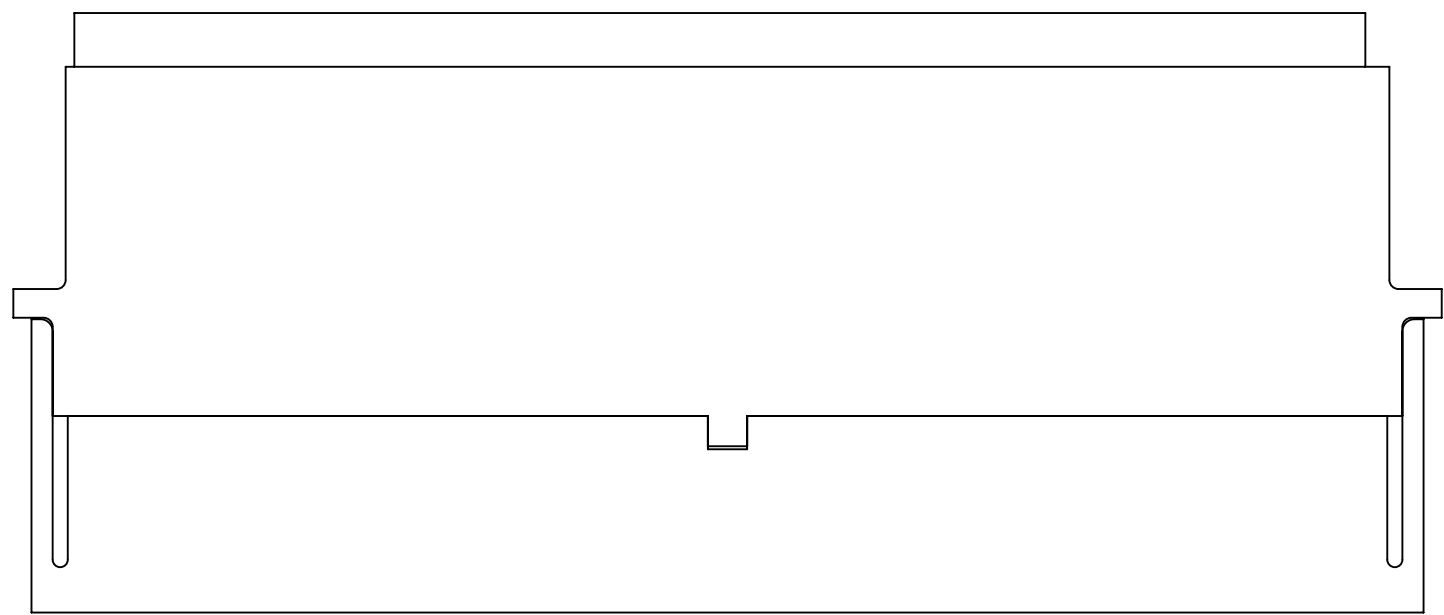


3M™ SHIELDED CONTROLLED IMPEDANCE (SCI)

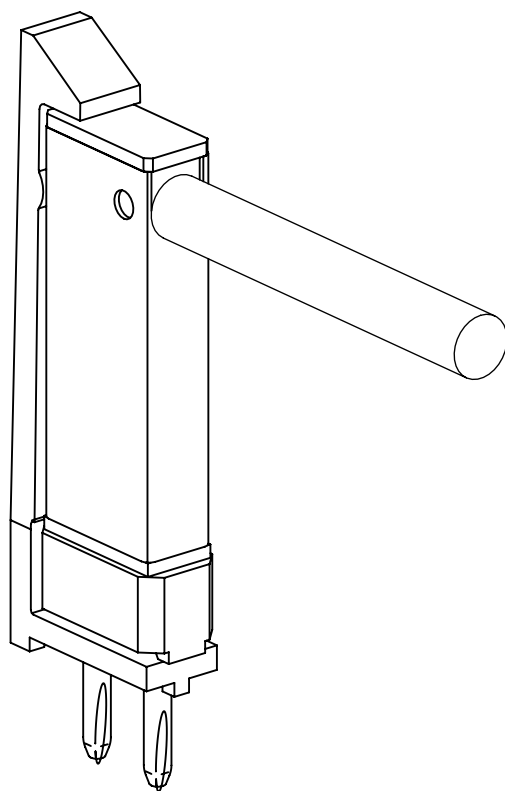
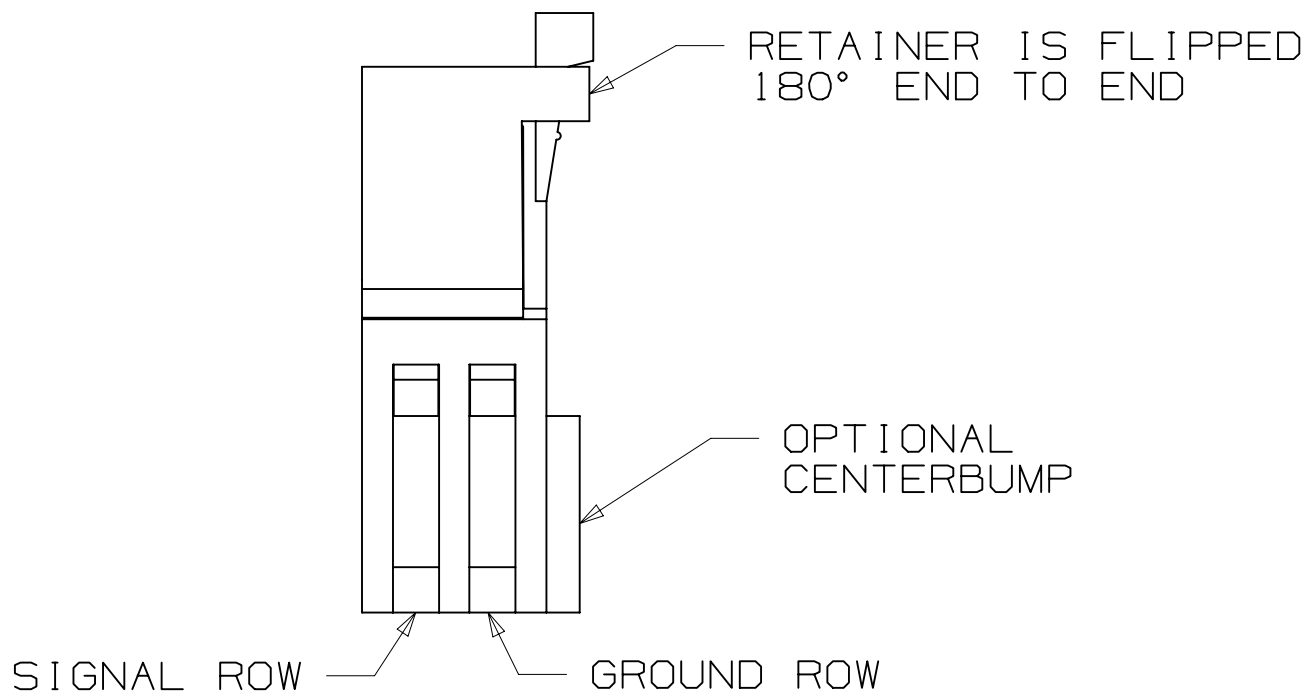
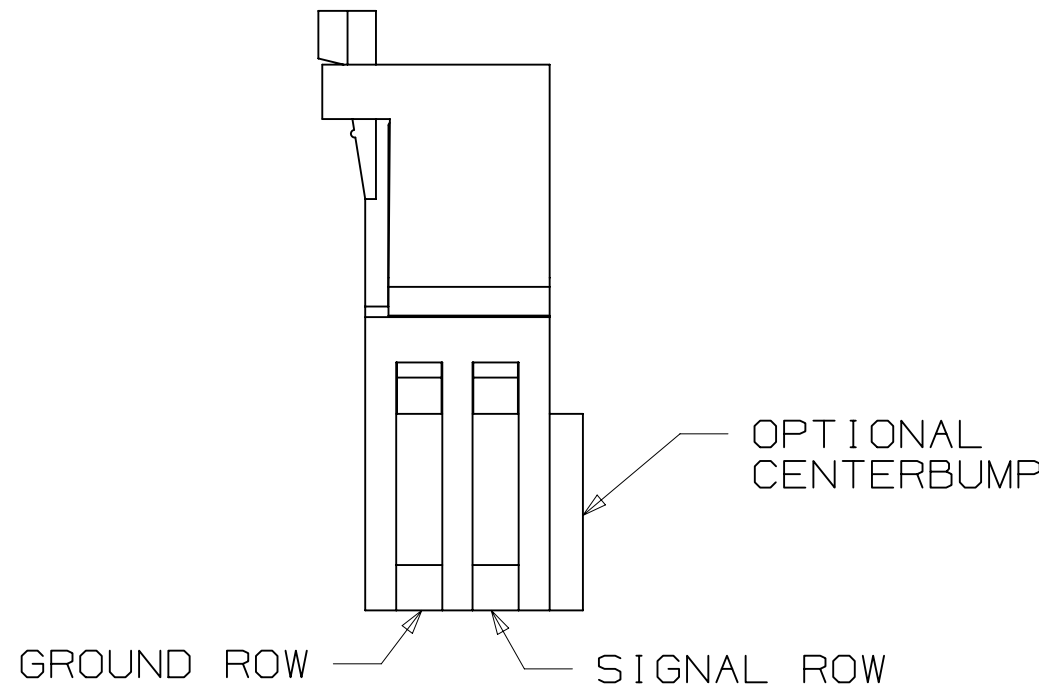
.100" ASSEMBLY HARDWARE



98XX-PSMO
NORMAL "MO" RETENTION STYLE



98XX-PSMR
REVERSE "MR" RETENTION STYLE



NOTE:
1) PIN STRIP LATCH IS FOR USE WITH
.100 SCI, RIGHT ANGLE CONNECTOR
TYPE 22 ONLY.
(SEE TECH SHEET TS-0803)

2 ROW CARRIER HOUSING

- * CARRIERS AVAILABLE IN 3M .100" X .100" (2.54MM X 2.54MM) SOCKET.
- * COMPATIBLE WITH ALL 3M .100" X .100" (2.54MM X 2.54MM) HEADERS.
- * AVAILABLE IN SHORT OR LONG LATCH STYLES. CHECK STYLE FOR MATCH.

3 X 7 CARRIER HOUSING

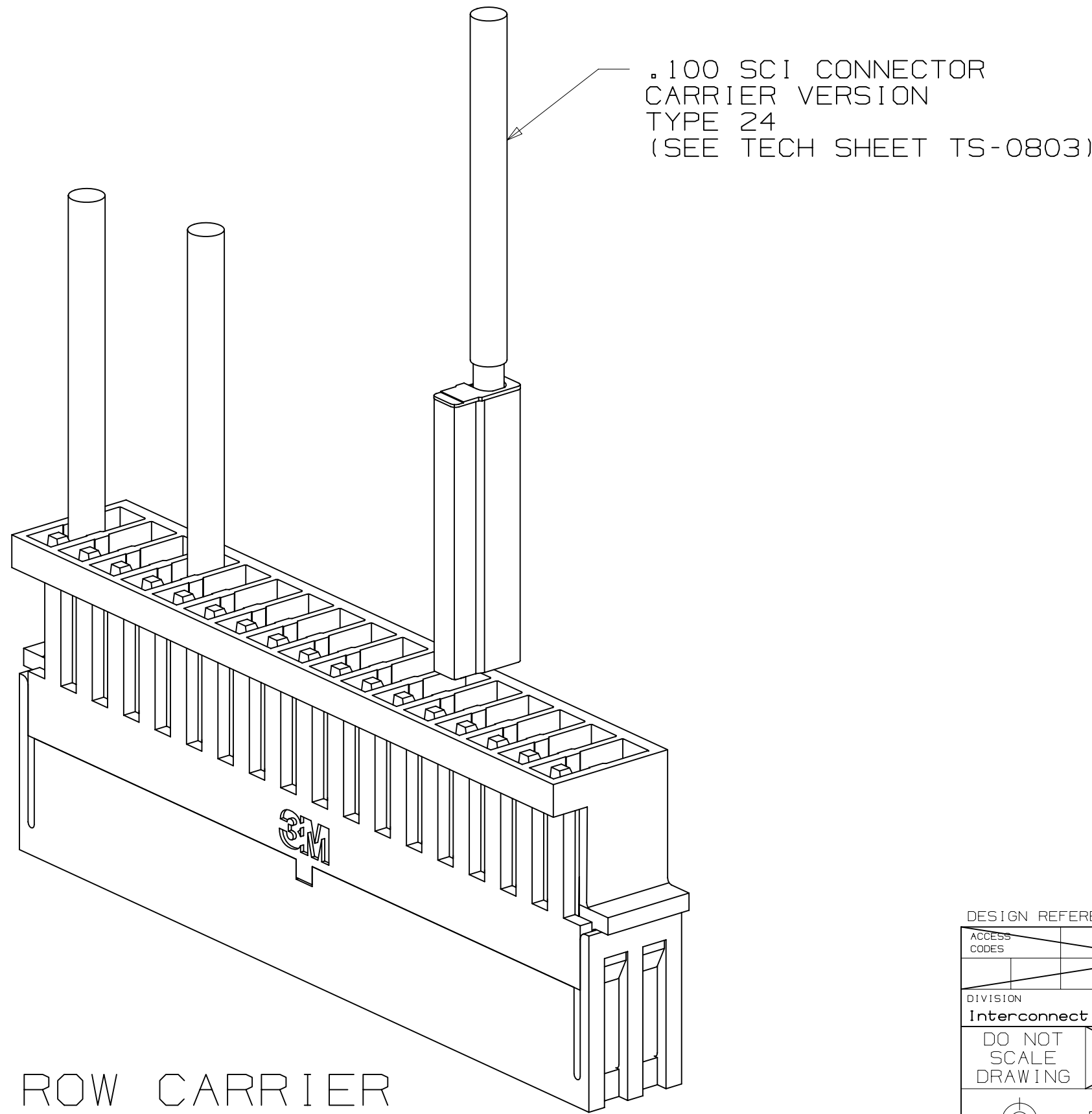
- * INTEGRAL LOCKING FEATURE.
- * INCLUDES TWO RETENTION CLIPS.

PIN STRIP LATCH

- * AVAILABLE FOR THE RIGHT ANGLE SCI CONNECTOR.
- * RoHS COMPLIANT

PHYSICAL :

- INSULATION MATERIAL:
- 2 ROW CARRIER: POLYCARBONATE
 - 3 X 7 CARRIER: GLASS REINFORCED POLYESTER
- COLOR: BLACK
- FLAMMABILITY: UL 94V-0
- MARKINGS: 3M LOGO
- CONTACTS: COPPER ALLOY



2 ROW CARRIER

- NOTES
1. REGULATORY INFORMATION:
VISIT 3M.com/regs
 2. IN THE EVENT OF CONFLICT
BETWEEN THIS DATA AND THAT
CONTAINED IN THE PRODUCT
SPECIFICATION, THE PRODUCT
SPECIFICATION TAKES PRECEDENT.

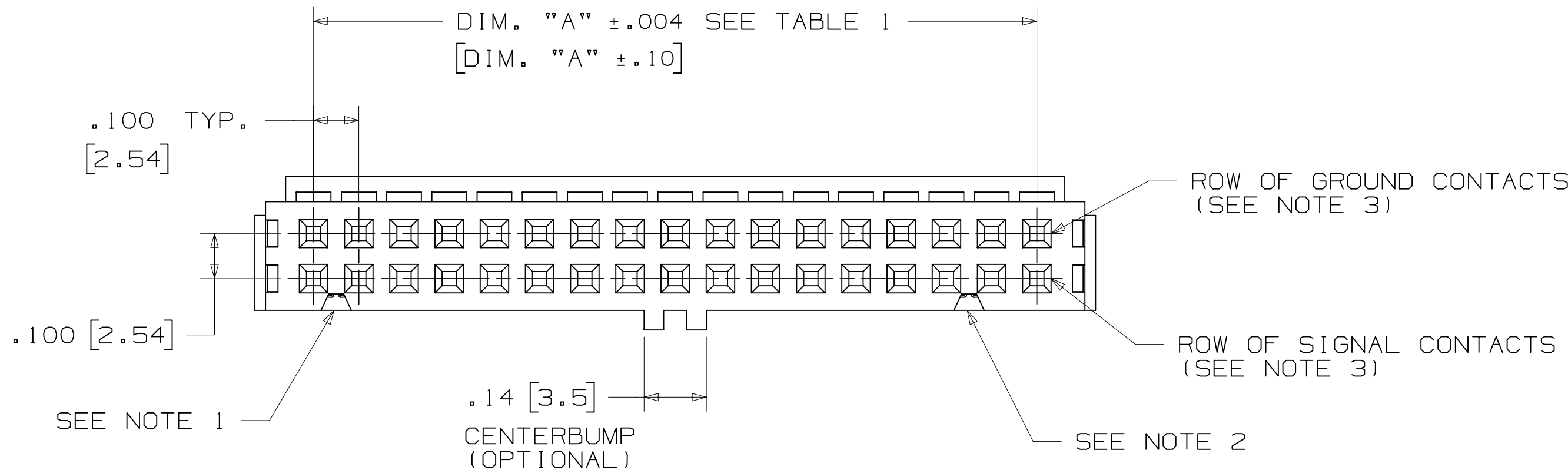
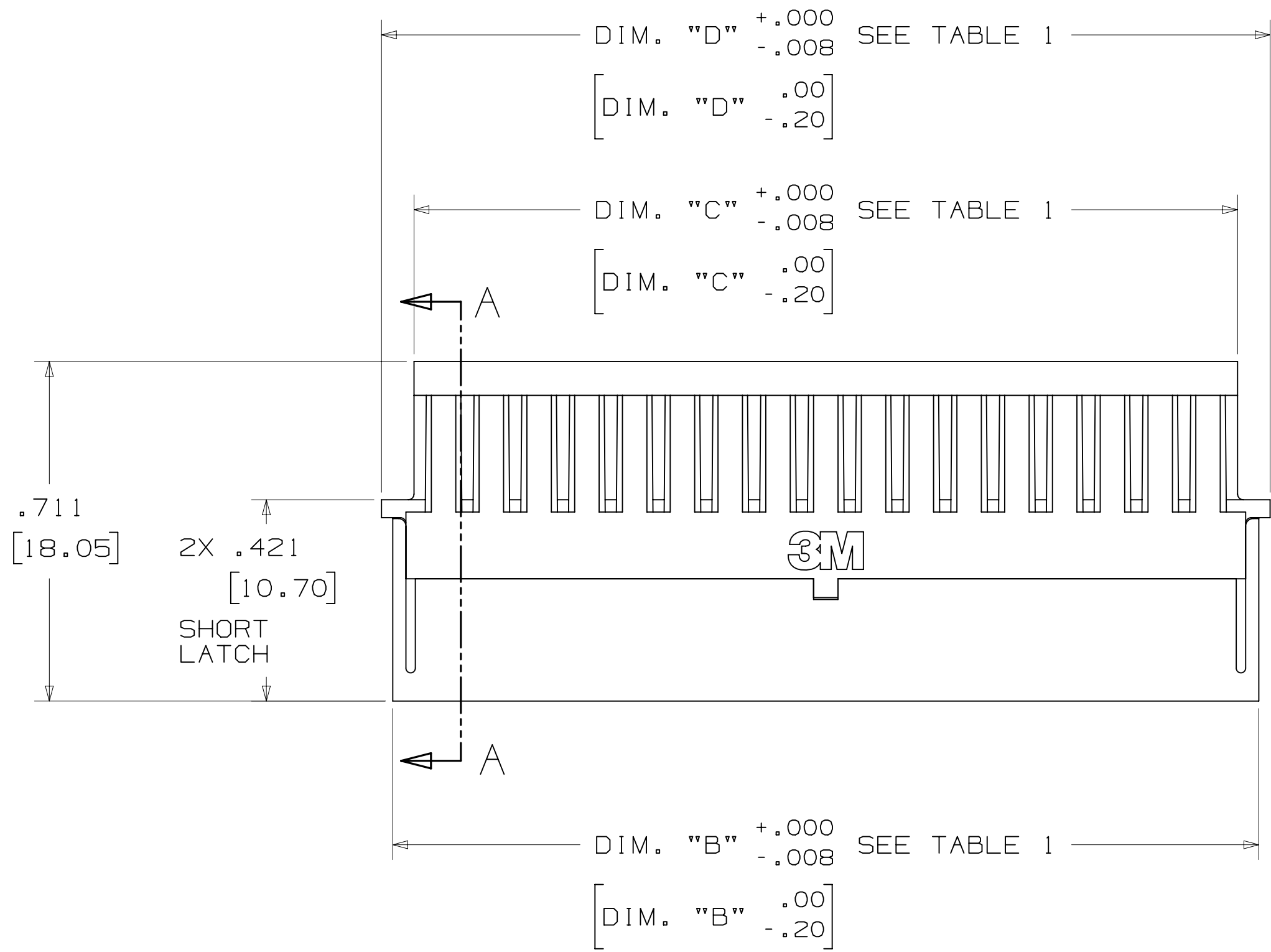
3M ELECTRONICS MATERIALS SOLUTIONS DIVISION
INTERCONNECT SOLUTIONS
<http://www.3M.com/interconnect>

3M IS A TRADEMARK OF 3M COMPANY.
FOR TECHNICAL, SALES OR ORDERING
INFORMATION CALL 800-225-5373

DESIGN REFERENCE		NEXT ASSEMBLY		REV	ECO	ISSUE DATE AND DESCRIPTION		DRFT	CHKD
XREF CODES		DIVISION CODE		DR	CASTIGLIONE	DATE	JAN 03,2013	MFG	DATE
				CHKD		DATE	JAN 03,2013	APPR	DATE
								R. SCHERER	JAN 03,2013
DIVISION		Interconnect Solutions		ISD		© 3M COPYRIGHT 2020			
DO NOT SCALE DRAWING		SCALE		TOLERANCES EXCEPT AS NOTED		3M Center St. Paul, MN 55144			
THIRD ANGLE PROJECTION		INTERPRET PER ASME Y14.5 - 2018		INCHES		This document and the information it contains are 3M property and may not be reproduced or further distributed without 3M permission, or used or disclosed other than for 3M authorized purposes. All rights reserved.			
MAX SURFACE ROUGHNESS		SURFACES		MILLIMETERS		TITLE			
MARKED ONLY				0 ±.1		3M™ SHIELDED CONTROLLED IMPEDANCE (SCI)			
				.00 ±.01		.100" ASSEMBLY HARDWARE			
				.000 ±.005		CAGE NUMBER			
				.0000 ±.0002		D 78-5100-0802-8			
				0 ±.2		MODEL			
				.0 ±.3		REV.			
				.00 ±.13		C			
				.000 ±.005		DET			
				ANGLES		YES X NO			
						SHT 1 OF 4			

3M™ SHIELDED CONTROLLED IMPEDANCE (SCI)

.100" ASSEMBLY HARDWARE



ORDERING INFORMATION
2 ROW CARRIER HOUSING

98XX-XXXX
CONTACT QTY. SEE TABLE 1
MOLDED RETENTION FEATURE:
MO = NORMAL
MR = REVERSE
CARRIER STYLE:
PS = CENTERBUMP, SHORT LATCHES
NS = NO CENTERBUMP, SHORT LATCHES
PL = CENTERBUMP, LONG LATCHES
NL = NO CENTERBUMP, LONG LATCHES

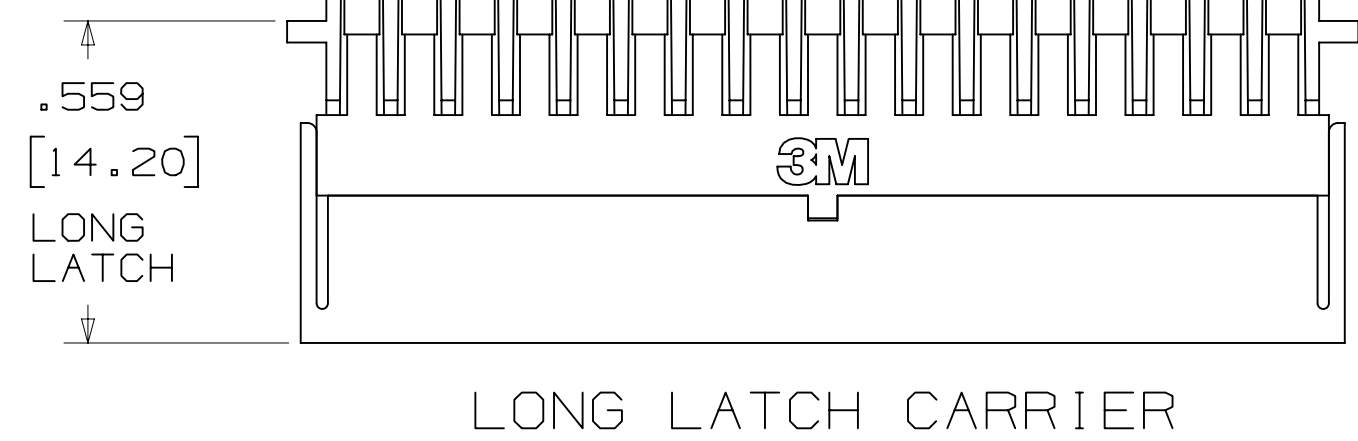
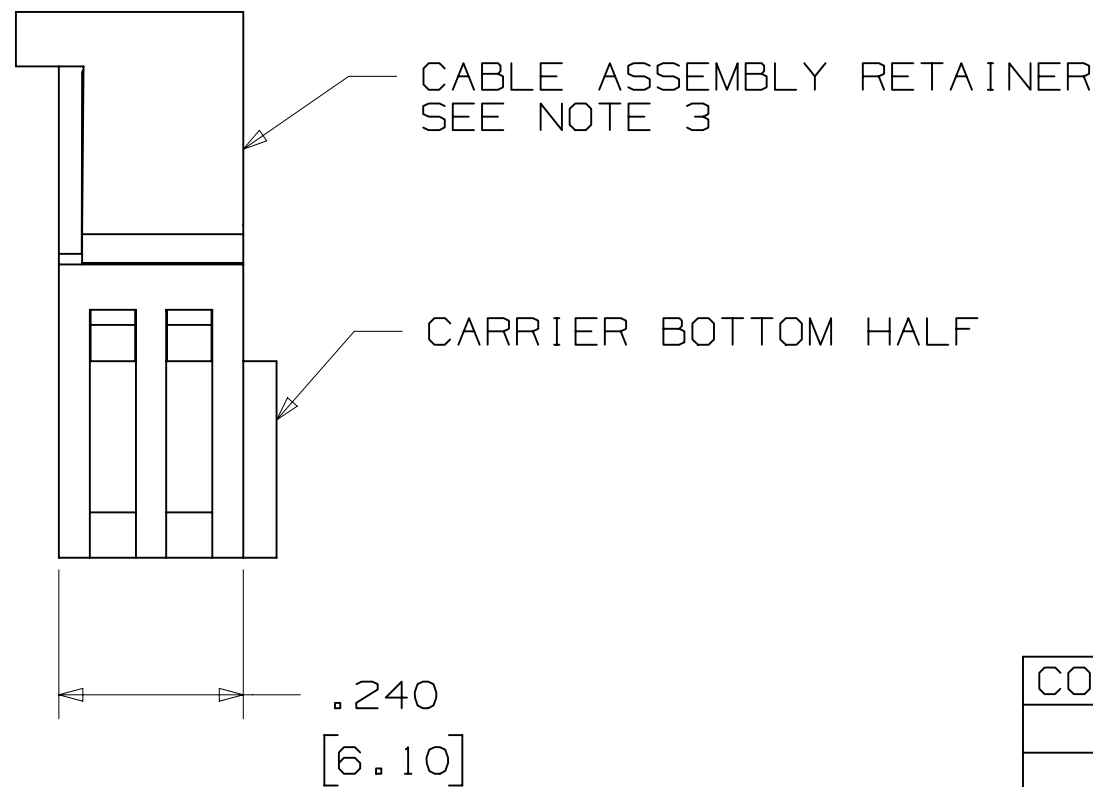
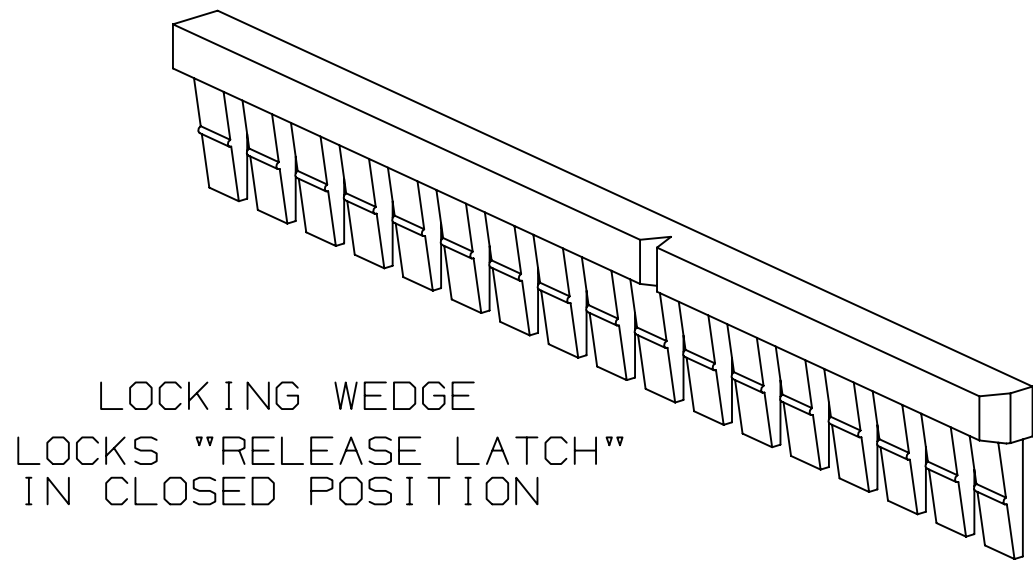
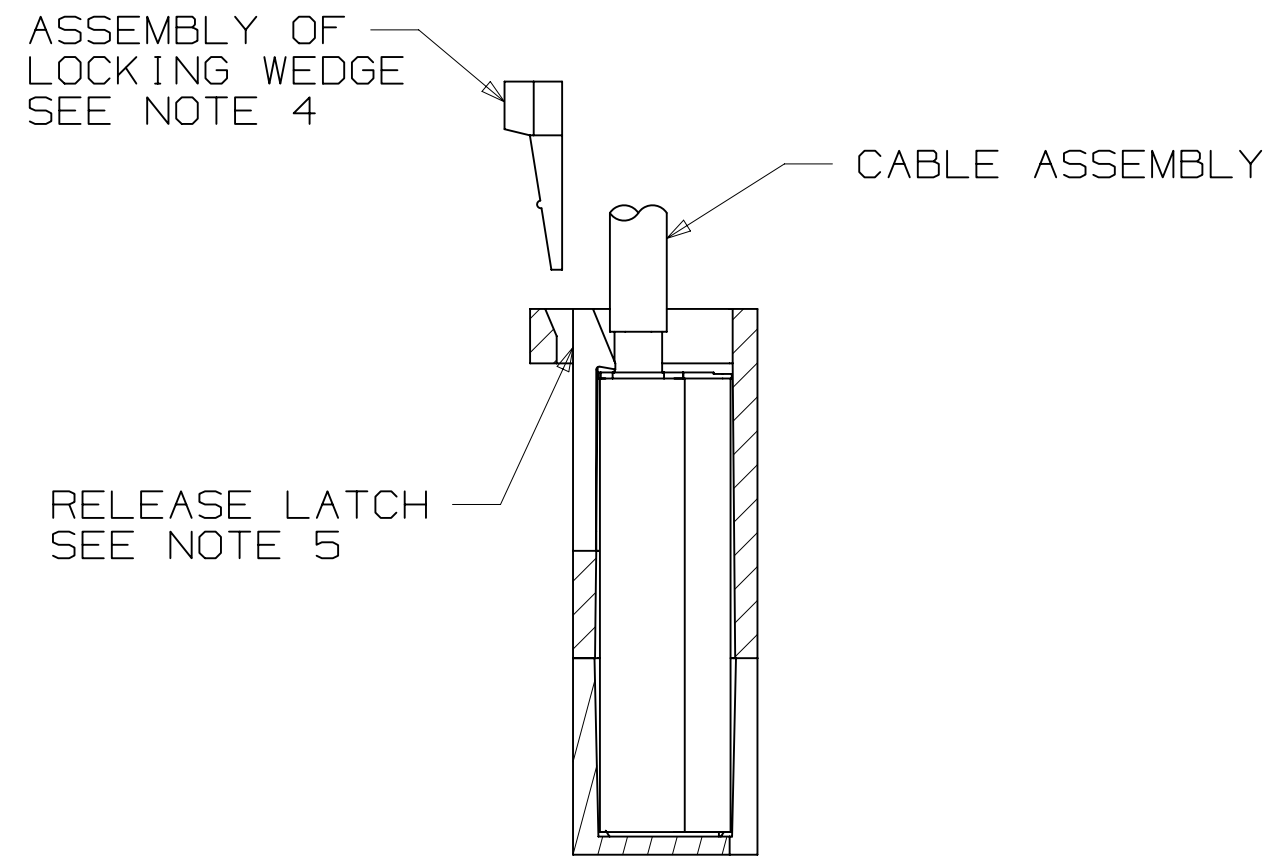


TABLE 1: CARRIER POSITIONS

CONTACT QTY.	DIM. "A"	DIM. "B"	DIM. "C"	DIM. "D"
06	.20 [5.08]	.41 [10.48]	.32 [8.22]	.46 [11.68]
08	.30 [7.62]	.51 [13.02]	.42 [10.76]	.56 [14.22]
* 10	.40 [10.16]	.61 [15.56]	.52 [13.30]	.66 [16.76]
12	.50 [12.70]	.71 [18.10]	.62 [15.84]	.76 [19.30]
* 14	.60 [15.24]	.81 [20.64]	.72 [18.38]	.86 [21.84]
* 16	.70 [17.78]	.91 [23.18]	.82 [20.92]	.96 [24.38]
* 20	.90 [22.86]	1.11 [28.26]	1.02 [26.00]	1.16 [29.46]
* 26	1.20 [30.48]	1.41 [35.88]	1.32 [33.62]	1.46 [37.08]
30	1.40 [35.56]	1.61 [40.96]	1.52 [38.70]	1.66 [42.16]
* 34	1.60 [40.64]	1.81 [46.04]	1.72 [43.78]	1.86 [47.24]
* 40	1.90 [48.26]	2.11 [53.66]	2.02 [51.40]	2.16 [54.86]
* 50	2.40 [60.96]	2.61 [66.36]	2.52 [64.10]	2.66 [67.56]
60	2.90 [73.66]	3.11 [79.06]	3.02 [76.80]	3.16 [80.26]
* 64	3.10 [78.74]	3.31 [84.14]	3.22 [81.88]	3.36 [85.34]

* TOOLED POSITIONS: CONTACT 3M SALES FOR ADDITIONAL POSITIONS

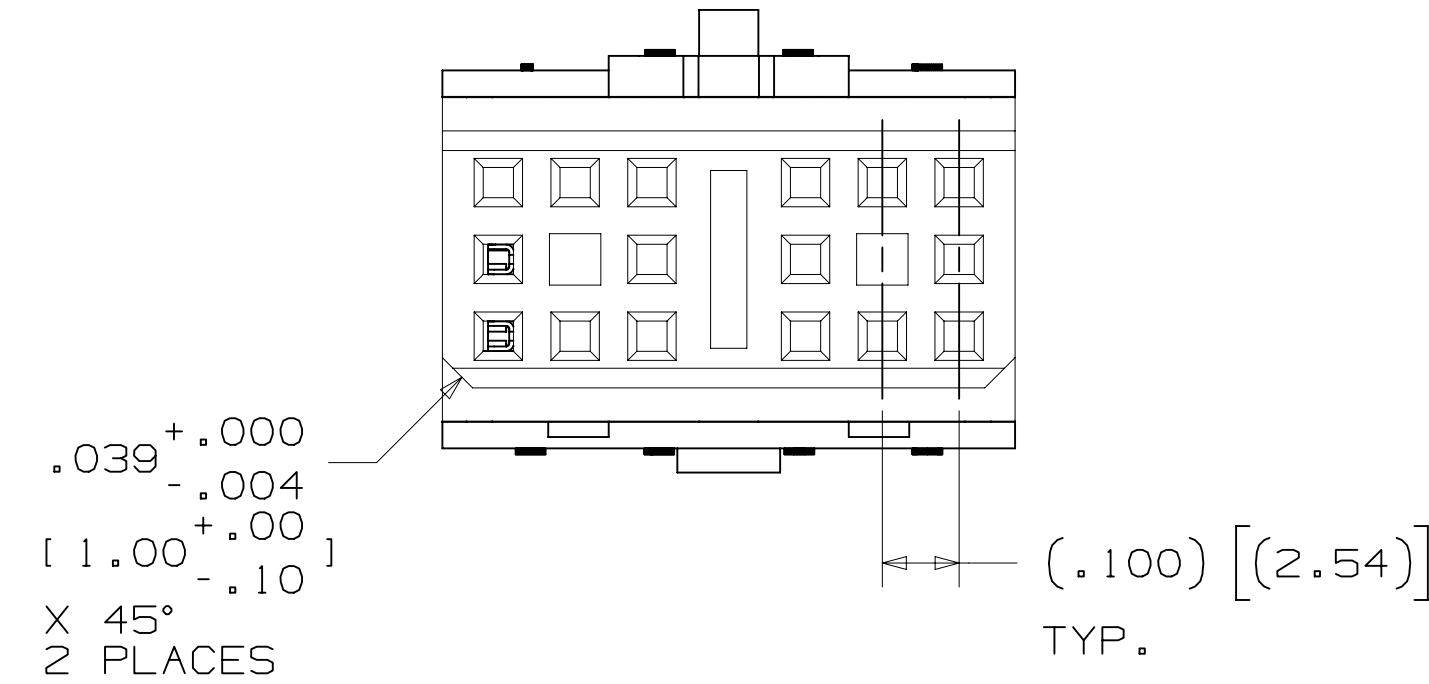
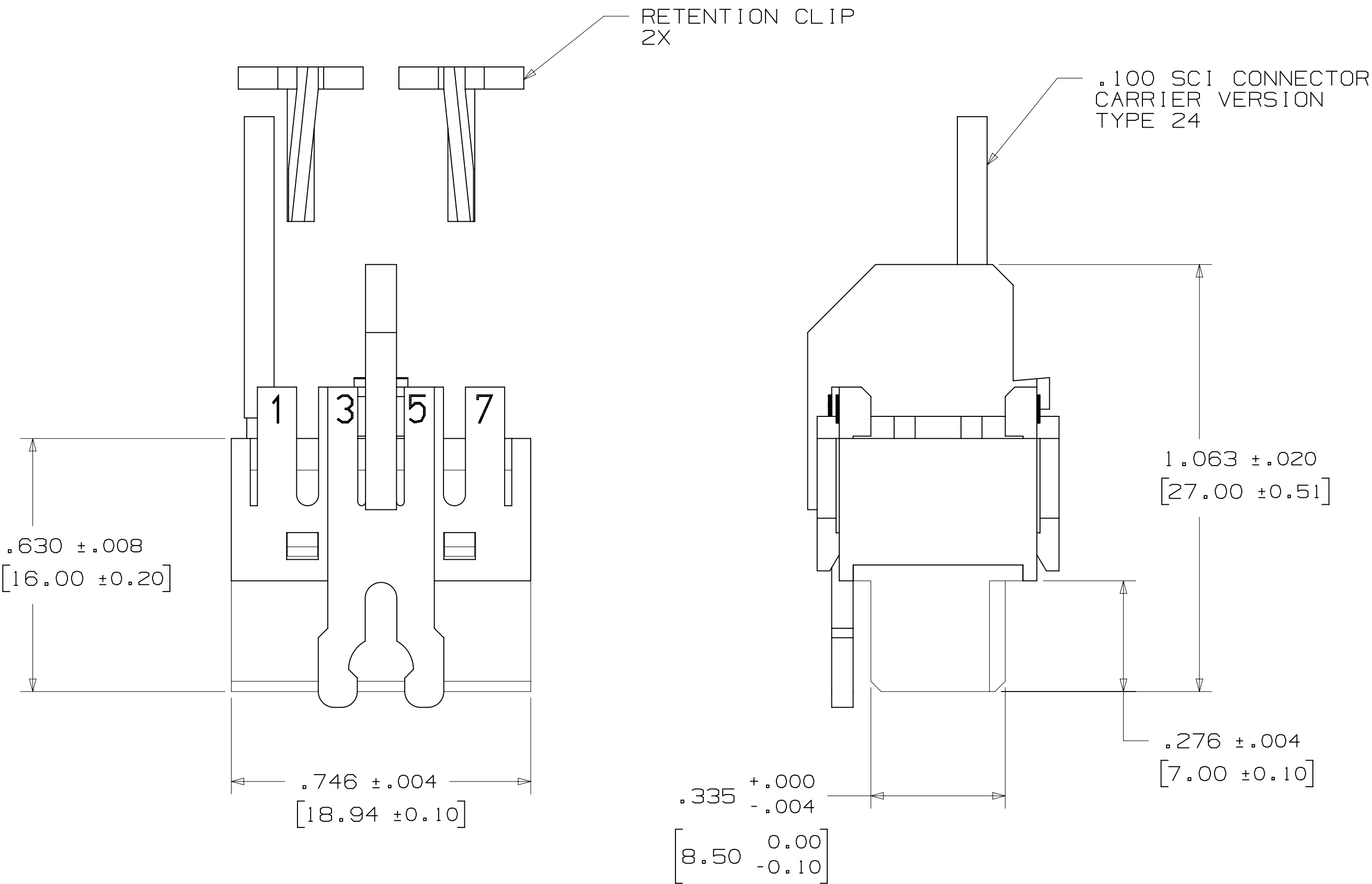
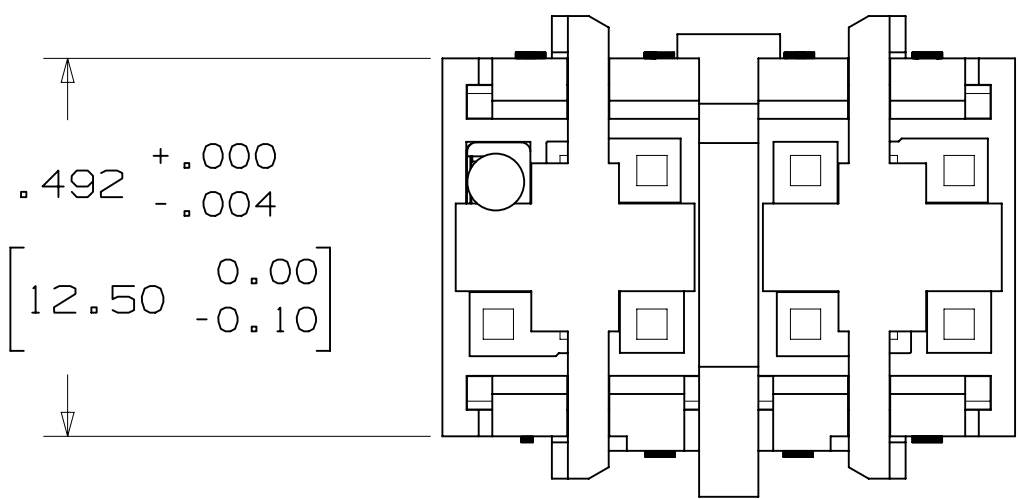


SECTION A - A

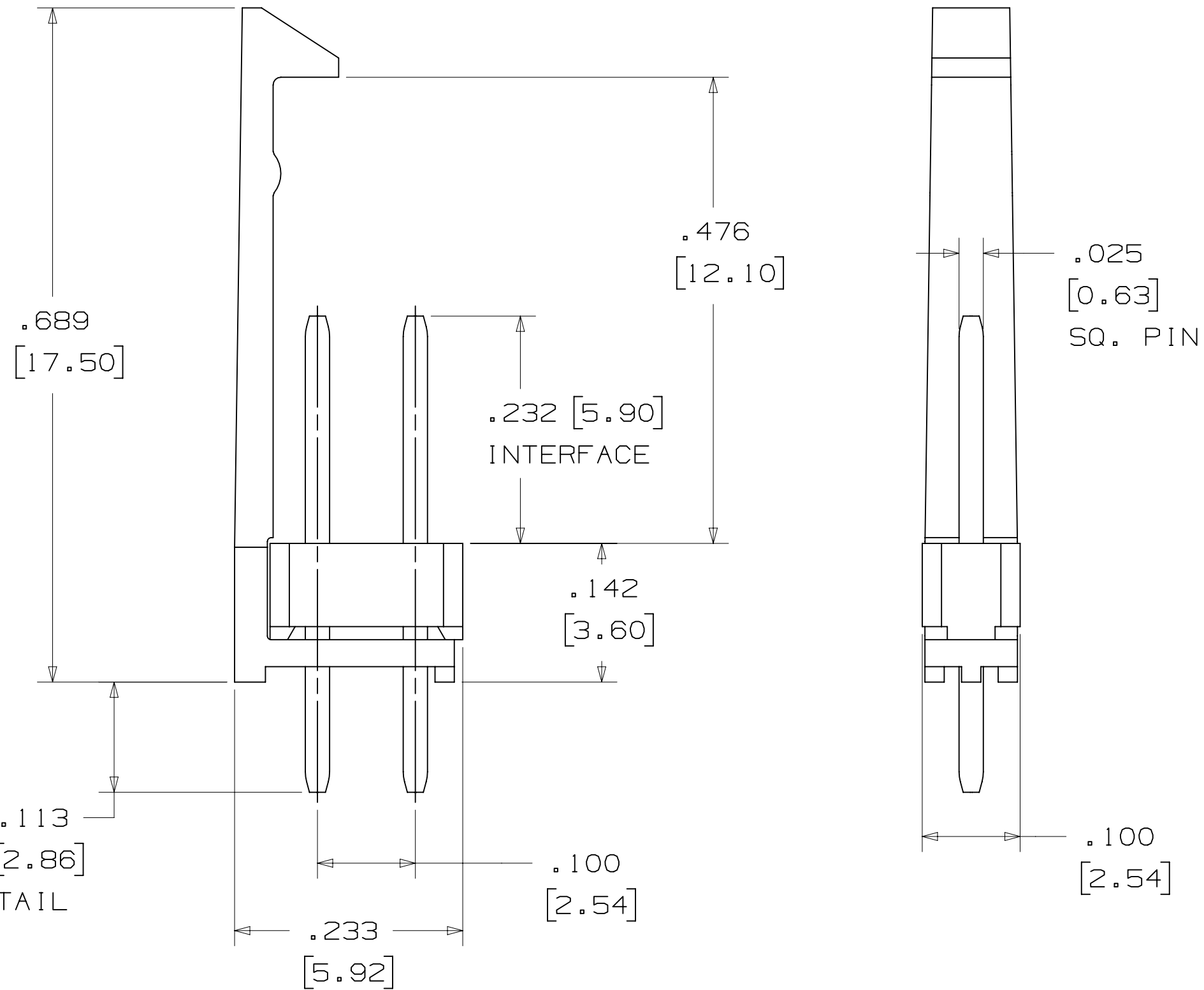
- NOTES
- 1 POLARIZING GROOVE OMITTED FOR POSITIONS 6 AND 8.
 - 2 POLARIZING GROOVE OMITTED FOR POSITIONS 6, 8, 10, 12 AND 14.
 - 3 THE NORMAL "MO" RETENTION STYLE IS ILLUSTRATED. FOR THE REVERSE "MR" RETENTION STYLE THE CABLE ASSEMBLY RETAINER IS FLIPPED 180° END TO END AND THE "SIGNAL" AND "GROUND" ROWS OF CONTACTS ARE ALSO REVERSED.
 - 4 OPTIONAL LOCKING WEDGE PREVENTS SCI REMOVAL. 25 POSITION (CUT TO LENGTH)
 - 5 RELEASE LATCH CAN BE MOVED WITH FINGERNAIL TO ALLOW REPLACEMENT OF SCI CABLE LINE.

DESIGN REFERENCE	NEXT ASSEMBLY	REV	ECO	ISSUE DATE AND DESCRIPTION	DRFT	CHKD
INTERCONNECT CODES	DIVISION CODE	CASTIGLIONE	DATE	DATE	DATE	DATE
Interconnect Solutions	ISD	DATE	DATE	DATE	DATE	DATE
DO NOT SCALE DRAWING	TOLERANCES EXCEPT AS NOTED	3M	3M Center St. Paul, MN 55144	© 3M COPYRIGHT 2020	This document and the information it contains are 3M property and may not be reproduced or further distributed without 3M permission, or used or disclosed other than for 3M authorized purposes. All rights reserved.	
THIRD ANGLE PROJECTION	INTERPRET PER ASME Y14.5 - 2018	3M™ SHIELDED CONTROLLED IMPEDANCE (SCI)	.100" ASSEMBLY HARDWARE			
MAX SURFACE ROUGHNESS	MAX SURFACE ROUGHNESS	CAGE NUMBER	SIZE	DRAWING NO.	REV.	
MARKED ONLY	MARKED ONLY	D78-5100-0802-8	C			

3M™ SHIELDED CONTROLLED IMPEDANCE (SCI)
.100" ASSEMBLY HARDWARE



ORDERING INFORMATION
3 X 7 CARRIER HOUSING
9821-5000



ORDERING INFORMATION
PIN STRIP WITH LATCH
2402-3505 RC

C		92908		SEP 24, 2020		JNC		FJR			
B		44714		JAN 03, 2013		JNC		RS			
DESIGN REFERENCE		NEXT ASSEMBLY		REV		ECO		ISSUE DATE AND DESCRIPTION		DRFT	CHKD
ACROSS CODES				DRPT CASTIGLIONE		DATE JAN 03, 2013		MFG REV SCHERER		DATE JAN 03, 2013	
DIVISION		DIVISION CODE		3M		© 3M COPYRIGHT 2020		3M Center St. Paul, MN 55144		This document and the information it contains are 3M property. It may not be reproduced or further distributed without 3M permission, or used or disclosed other than for 3M authorized purposes. All rights reserved.	
DO NOT SCALE DRAWING		TOLERANCES EXCEPT AS NOTED		TITLE		3M™ SHIELDED CONTROLLED IMPEDANCE (SC1)		.100" ASSEMBLY HARDWARE			
		INCHES .0 ± .1 0.00 ± .01 0.00 ± .005 0.000 ± .0002		MILLIMETERS 0 ± .2 0.0 ± .3 0.00 ± .13 0.000 ± .005		CAGE NUMBER		SIZE		DRAWING NO.	
THIRD ANGLE PROJECTION		INTERPRET PER ASME Y14.5 - 2018		D		78-5100-0802-8		REV.		C	
MAX SURFACE ROUGHNESS		CAGE NUMBER		SIZE		DRAWING NO.		REV.			
✓ MARKED ONLY		CAGE NUMBER		SIZE		DRAWING NO.		REV.			
		CAGE NUMBER		SIZE		DRAWING NO.		REV.			
		CAGE NUMBER		SIZE		DRAWING NO.		REV.			
		CAGE NUMBER		SIZE		DRAWING NO.		REV.			
		CAGE NUMBER		SIZE		DRAWING NO.		REV.			
		CAGE NUMBER		SIZE		DRAWING NO.		REV.			
		CAGE NUMBER		SIZE		DRAWING NO.		REV.			
		CAGE NUMBER		SIZE		DRAWING NO.		REV.			
		CAGE NUMBER		SIZE		DRAWING NO.		REV.			
		CAGE NUMBER		SIZE		DRAWING NO.		REV.			
		CAGE NUMBER		SIZE		DRAWING NO.		REV.			
		CAGE NUMBER		SIZE		DRAWING NO.		REV.			
		CAGE NUMBER		SIZE		DRAWING NO.		REV.			
		CAGE NUMBER		SIZE		DRAWING NO.		REV.			
		CAGE NUMBER		SIZE		DRAWING NO.		REV.			
		CAGE NUMBER		SIZE		DRAWING NO.		REV.			
		CAGE NUMBER		SIZE		DRAWING NO.		REV.			
		CAGE NUMBER		SIZE		DRAWING NO.		REV.			
		CAGE NUMBER		SIZE		DRAWING NO.		REV.			
		CAGE NUMBER		SIZE		DRAWING NO.		REV.			
		CAGE NUMBER		SIZE		DRAWING NO.		REV.			
		CAGE NUMBER		SIZE		DRAWING NO.		REV.			
		CAGE NUMBER		SIZE		DRAWING NO.		REV.			
		CAGE NUMBER		SIZE		DRAWING NO.		REV.			
		CAGE NUMBER		SIZE		DRAWING NO.		REV.			
		CAGE NUMBER		SIZE		DRAWING NO.		REV.			
		CAGE NUMBER		SIZE		DRAWING NO.		REV.			
		CAGE NUMBER		SIZE		DRAWING NO.		REV.			
		CAGE NUMBER		SIZE		DRAWING NO.		REV.			
		CAGE NUMBER		SIZE		DRAWING NO.		REV.			
		CAGE NUMBER		SIZE		DRAWING NO.		REV.			
		CAGE NUMBER		SIZE		DRAWING NO.		REV.			
		CAGE NUMBER		SIZE		DRAWING NO.		REV.			
		CAGE NUMBER		SIZE		DRAWING NO.		REV.			
		CAGE NUMBER		SIZE		DRAWING NO.		REV.			
		CAGE NUMBER		SIZE		DRAWING NO.		REV.			
		CAGE NUMBER		SIZE		DRAWING NO.		REV.			
		CAGE NUMBER		SIZE		DRAWING NO.		REV.			
		CAGE NUMBER		SIZE		DRAWING NO.		REV.			
		CAGE NUMBER		SIZE		DRAWING NO.		REV.			
		CAGE NUMBER		SIZE		DRAWING NO.		REV.			
		CAGE NUMBER		SIZE		DRAWING NO.		REV.			
		CAGE NUMBER		SIZE		DRAWING NO.		REV.			
		CAGE NUMBER		SIZE		DRAWING NO.		REV.			
		CAGE NUMBER		SIZE		DRAWING NO.		REV.			
		CAGE NUMBER		SIZE		DRAWING NO.		REV.			
		CAGE NUMBER		SIZE		DRAWING NO.		REV.			
		CAGE NUMBER		SIZE		DRAWING NO.		REV.			
		CAGE NUMBER		SIZE		DRAWING NO.		REV.			
		CAGE NUMBER		SIZE		DRAWING NO.		REV.			
		CAGE NUMBER		SIZE		DRAWING NO.		REV.			
		CAGE NUMBER		SIZE		DRAWING NO.		REV.			
		CAGE NUMBER		SIZE		DRAWING NO.		REV.			
		CAGE NUMBER		SIZE		DRAWING NO.		REV.			
		CAGE NUMBER		SIZE		DRAWING NO.		REV.			
		CAGE NUMBER		SIZE		DRAWING NO.		REV.			
		CAGE NUMBER		SIZE		DRAWING NO.		REV.			
		CAGE NUMBER		SIZE		DRAWING NO.		REV.			
		CAGE NUMBER		SIZE		DRAWING NO.		REV.			
		CAGE NUMBER		SIZE		DRAWING NO.		REV.			
		CAGE NUMBER		SIZE		DRAWING NO.		REV.			
		CAGE NUMBER		SIZE		DRAWING NO.		REV.			
		CAGE NUMBER		SIZE		DRAWING NO.		REV.			
		CAGE NUMBER		SIZE		DRAWING NO.		REV.			
		CAGE NUMBER		SIZE		DRAWING NO.		REV.			
		CAGE NUMBER		SIZE		DRAWING NO.		REV.			
		CAGE NUMBER		SIZE		DRAWING NO.		REV.			
		CAGE NUMBER		SIZE		DRAWING NO.		REV.			
		CAGE NUMBER		SIZE		DRAWING NO.		REV.			
		CAGE NUMBER		SIZE		DRAWING NO.		REV.			
		CAGE NUMBER		SIZE		DRAWING NO.		REV.			
		CAGE NUMBER		SIZE		DRAWING NO.		REV.			
		CAGE NUMBER		SIZE		DRAWING NO.		REV.			
		CAGE NUMBER		SIZE		DRAWING NO.		REV.			
		CAGE NUMBER		SIZE							

3M™ SHIELDED CONTROLLED IMPEDANCE (SCI)
.100" ASSEMBLY HARDWARE

Regulatory: For regulatory information about this product, visit 3M.com/regs or contact your 3M representative.

Technical Information: The technical information, recommendations and other statements contained in this document are based upon tests or experience that 3M believes are reliable, but the accuracy or completeness of such information is not guaranteed.

Product Use: Many factors beyond 3M's control and uniquely within user's control can affect the use and performance of a 3M product in a particular application. Given the variety of factors that can affect the use and performance of a 3M product, user is solely responsible for evaluating the 3M product and determining whether it is fit for a particular purpose and suitable for user's method of application.

Warranty, Limited Remedy, and Disclaimer: Unless an additional warranty is specifically stated on the applicable 3M product packaging or product literature, 3M warrants that each 3M product meets the applicable 3M product specification at the time 3M ships the product. 3M MAKES NO OTHER WARRANTIES OR CONDITIONS, EXPRESS OR IMPLIED, INCLUDING, BUT NOT LIMITED TO, ANY IMPLIED WARRANTY OR CONDITION OF MERCHANTABILITY OR FITNESS FOR A PARTICULAR PURPOSE OR ANY IMPLIED WARRANTY OR CONDITION ARISING OUT OF A COURSE OF DEALING, CUSTOM OR USAGE OR TRADE. If the 3M product does not conform to this warranty, then the sole and exclusive remedy is, at 3M's option, replacement of the 3M product or refund of the purchase price.

Limitation of Liability: Except where prohibited by law, 3M will not be liable for any loss or damage arising from the 3M product, whether direct, indirect, special, incidental or consequential, regardless of the legal theory asserted, including warranty, contract, negligence or strict liability.

3M Company
Electronics Materials Solutions Division
13011 McCallen Pass, Bldg. C
Austin, TX 78753-5380
1-800-225-5373
www.3M.com/interconnect

		C	92908	SEP 24,2020		JNC	FJR
		REVISE ORDERING INFO					
		SHT 2					
		B	44714	JAN 03,2013		JNC	RS
		REVISED AND REDRAWN					
DESIGN REFERENCE		REV	ECO	ISSUE DATE AND DESCRIPTION		DRFT	CHKD
NEXT ASSEMBLY		DRP	DATE		MFG	DATE	
		CHKD	JAN 03,2013		R. SCHERER	JAN 03,2013	
DIVISION		DIVISION CODE					
Interconnect Solutions		ISD					
DO NOT SCALE DRAWING		TOLERANCES EXCEPT AS NOTED					
THIRD ANGLE PROJECTION		INCHES					
INTERPRET PER ASME Y14.5 - 2018		MILLIMETERS					
MAX SURFACE ROUGHNESS		CAGE NUMBER					
MARKED ONLY		MODEL					
		DRAWING NO.				REV.	
		78-5100-0802-8				C	
		SHT 4 OF 4					

Mouser Electronics

Authorized Distributor

Click to View Pricing, Inventory, Delivery & Lifecycle Information:

3M:

9816-PSM0