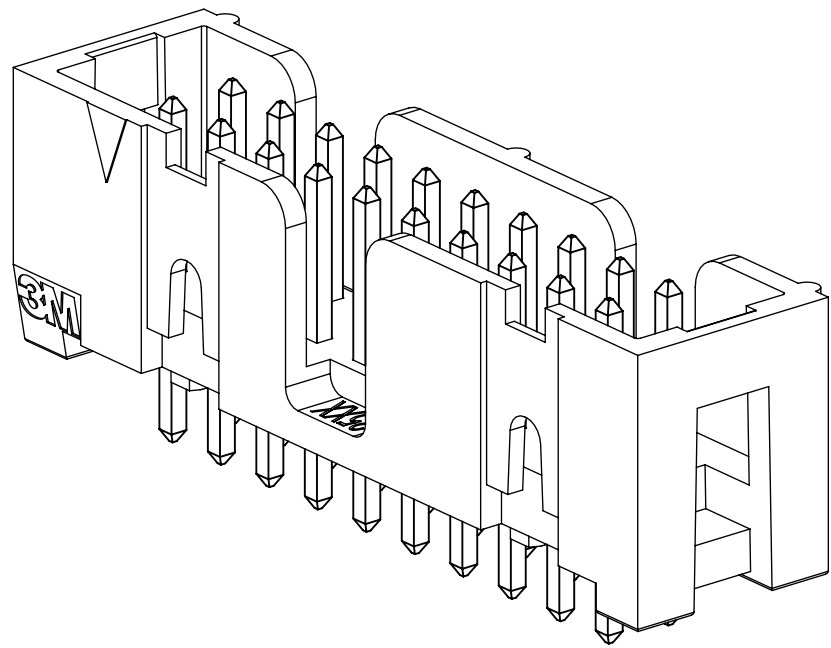


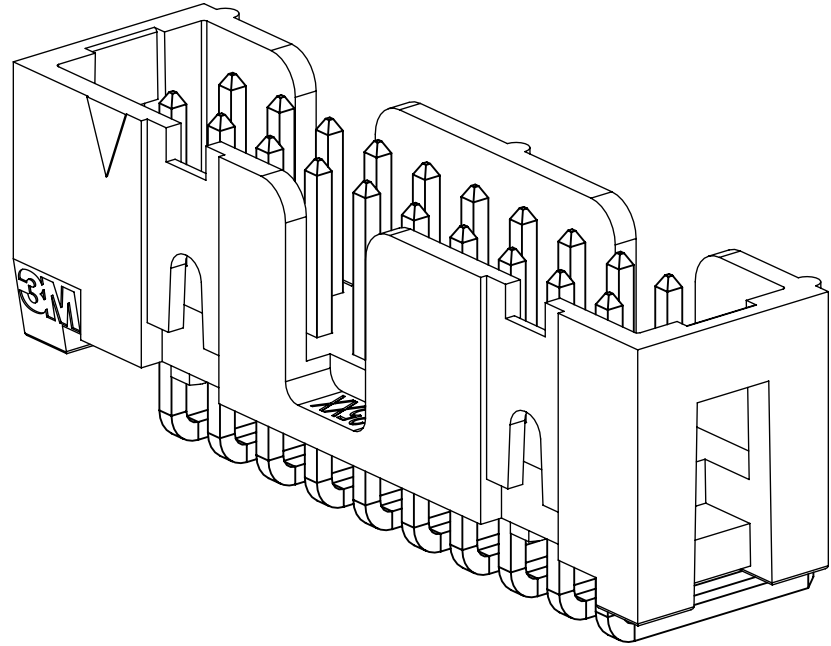
3M™ FOUR-WALL HEADER, 2500 SERIES

.100" X .100" LOW PROFILE, SURFACE MOUNT, STRAIGHT AND RIGHT ANGLE THROUGH-HOLE



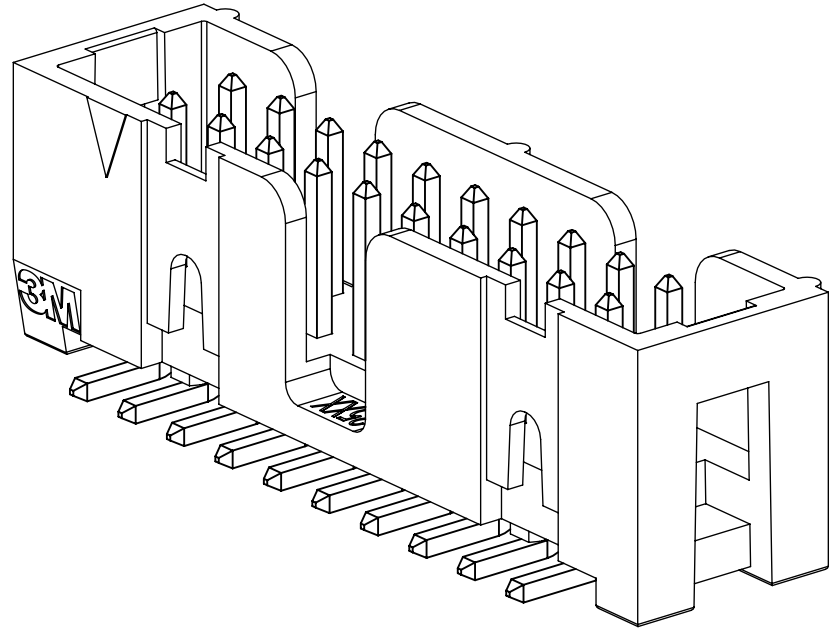
X25XX-60XX

STRAIGHT VERSION



X25XX-50XX

RIGHT ANGLE VERSION



X25XX-6V0C

SURFACE MOUNT VERSION

- * LOW PROFILE, SPACE SAVING DESIGN.
- * CENTER SLOT POLARIZATION PREVENTS MIS-INSERTIONS AND REDUCES INSERTION TIME.
- * DUAL SLOT POLARIZATION MEANS BROADER COMPATIBILITY WITH COMPETITIVE POLARIZATION DESIGNS (NOT AVAILABLE ON 6, 8 OR 10 POSITIONS).
- * OPTIONAL RETAINER CLIP FOR LOCKING SOCKETS IN PLACE AND INCREASING CONNECTION RELIABILITY IN VIBRATION-PRONE ENVIRONMENTS.
- * HIGH TEMPERATURE INSULATOR SUITABLE FOR "NO LEAD" SOLDERING OPERATIONS.
- * THROUGH HOLE VERSION SUITABLE FOR REFLOW SOLDERING USING "PASTE IN HOLE" TECHNIQUES.
- * EXPOSED SOLDER TAILS (ON RIGHT ANGLE VERSION) PROVIDE EASE OF CLEANING AND REDUCED REPAIR COST.
- * STRAIGHT SURFACE MOUNT VERSION AVAILABLE.

2 PHYSICAL :

INSULATOR:
MATERIAL: HIGH TEMPERATURE GLASS FILLED POLYESTER (PCT)
FLAMMABILITY: UL94V-0
COLOR: BLACK
CONTACT:
MATERIAL: COPPER ALLOY
PLATING:
UNDER PLATING: NICKEL UNDERPLATE (SEE ORDERING INFORMATION)
WIPING AREA: GOLD (SEE ORDERING INFORMATION)
SOLDER TAILS: MATTE TIN (SEE ORDERING INFORMATION)
MARKINGS: 3M LOGO, PART IDENTIFICATION NUMBER AND ORIENTATION TRIANGLE

2 ELECTRICAL :

CURRENT RATING: 5.00A, 1 CONTACT POWERED
3.00A, 6 CONTACTS POWERED
1.75A, ALL CONTACTS POWERED
RATING CONDITIONS: EIA-364-070 METHOD 2, 30°C MAXIMUM TEMPERATURE RISE, 20% DERATED. REFERENCE APPROPRIATE 3M PRODUCT SPECIFICATION FOR DETAILED CURRENT DERATING CURVES.
INSULATION RESISTANCE: >1 X 10⁹Ω AT 500 V_{DC}
WITHSTANDING VOLTAGE: 1,000V_{RMS} AT SEA LEVEL

2 ENVIRONMENTAL :

TEMPERATURE RATING: -55°C TO 105°C
PROCESS RATING: 260°C, PER J-STD-020C, SINGLE PASS
MOISTURE SENSITIVITY LEVEL: 1 (PER J-STD-020C)

- NOTES
1. REGULATORY INFORMATION:
VISIT 3M.com/regs
 2. IN THE EVENT OF CONFLICT BETWEEN THIS DATA AND THAT CONTAINED IN THE PRODUCT SPECIFICATION, THE PRODUCT SPECIFICATION TAKES PRECEDENT.
 3. NOTCHES A & C WILL ACCOMODATE 3M POLARIZING KEY: N3518.
 4. CONTACT TAILS .0245 (.622) WIRE WITH .0075 (.191) CORNER RADI AND .028 (.072) DIAGONAL.
 5. SOLDER STANDOFFS FACILITATE .01 (.3) CLEARANCE ABOVE BOARD FOR REFLOW SOLDERING.

3M ELECTRONIC MATERIALS SOLUTIONS DIVISION
INTERCONNECT SOLUTIONS
<http://www.3mconnectors.com>

3M IS A TRADEMARK OF 3M COMPANY.
FOR TECHNICAL, SALES OR ORDERING
INFORMATION CALL 800-225-5373

UL **us**
UL FILE NO: E68080

DIMENSIONS: INCHES [MM]

DESIGN REFERENCE		NEXT ASSEMBLY		REV	ECO	ISSUE DATE AND DESCRIPTION		DRFT	CHKD
X25XX-60XX				CHKD		DATE	DATE		
				CHKD		DATE	DATE		
DIVISION		DIVISION CODE		3M Center		© 3M COPYRIGHT 2020			
Interconnect Solutions		EMSD		St. Paul, MN 55144		This document and the information it contains are 3M property and may not be reproduced or further distributed without 3M permission, or used or disclosed other than for 3M authorized purposes. All rights reserved.			
DO NOT SCALE DRAWING		SCALE 4 1		TOLERANCES EXCEPT AS NOTED		TITLE			
						HEADER, 4-WALL, LO-PRO, .100 X .100, SMT, STRAIGHT & RA			
						CAGE NUMBER D78-5100-0770-7			
						REV. P			
						MODEL 2500 SERIES			
						DET [] YES [X] NO [] SHT 1 OF 6			

3M™ FOUR-WALL HEADER, 2500 SERIES
.100" X .100" LOW PROFILE, SURFACE MOUNT, STRAIGHT AND RIGHT ANGLE THROUGH-HOLE

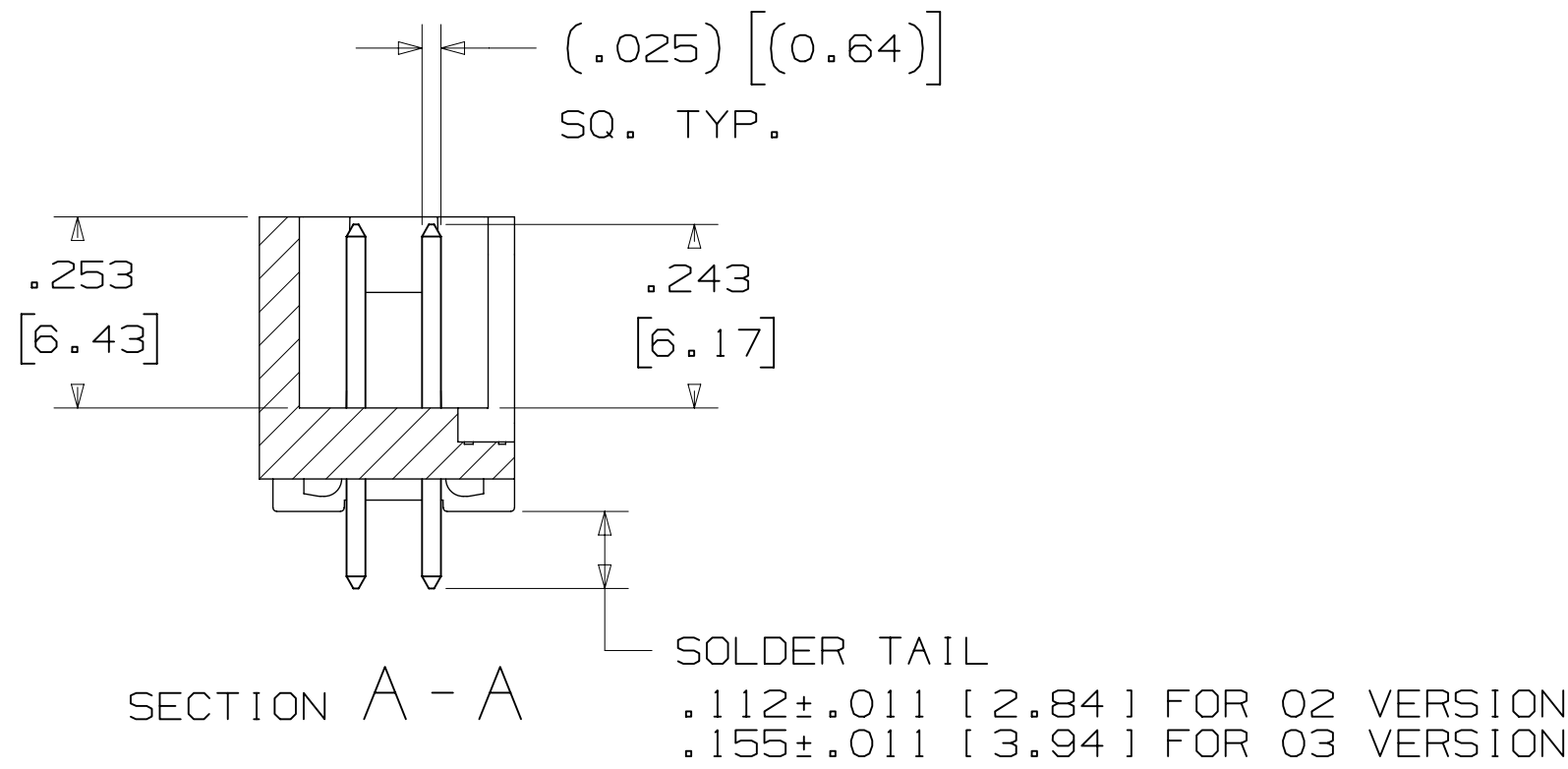
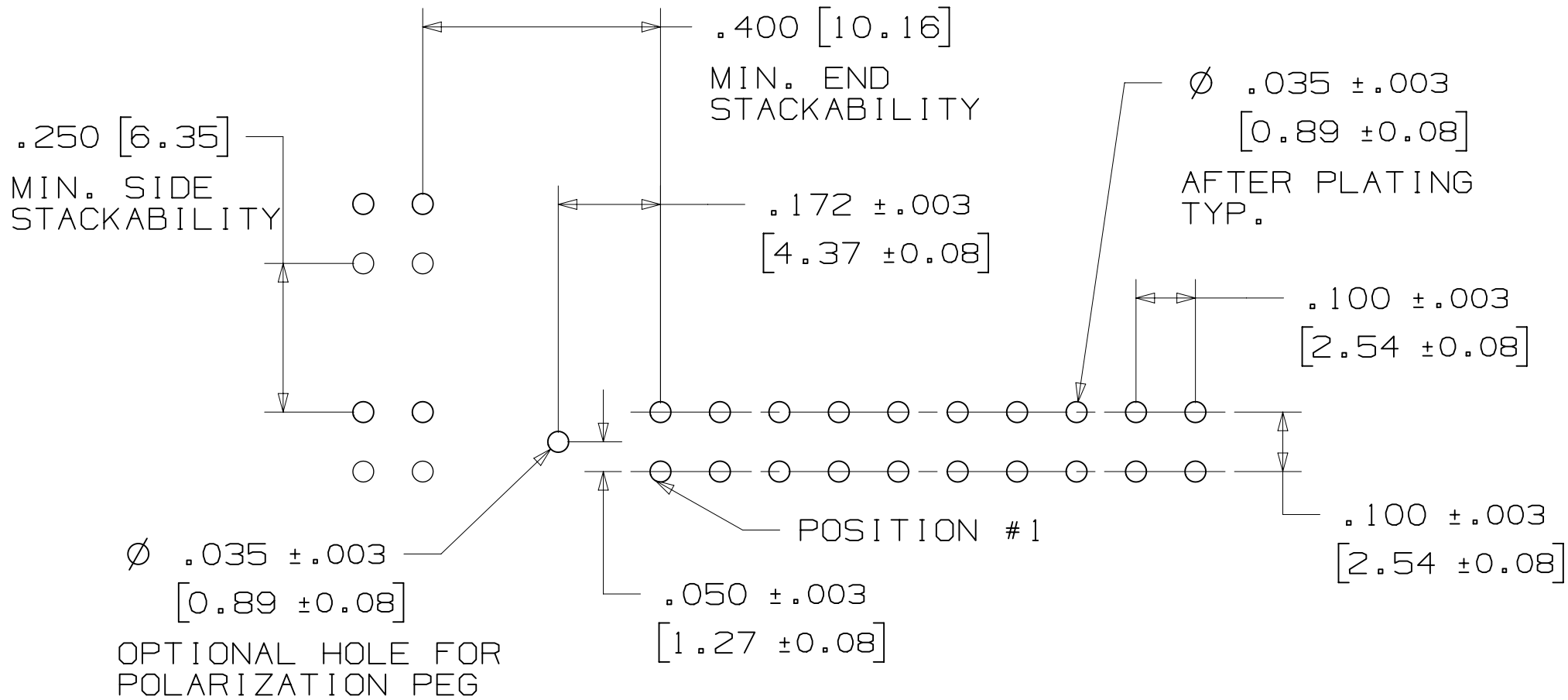
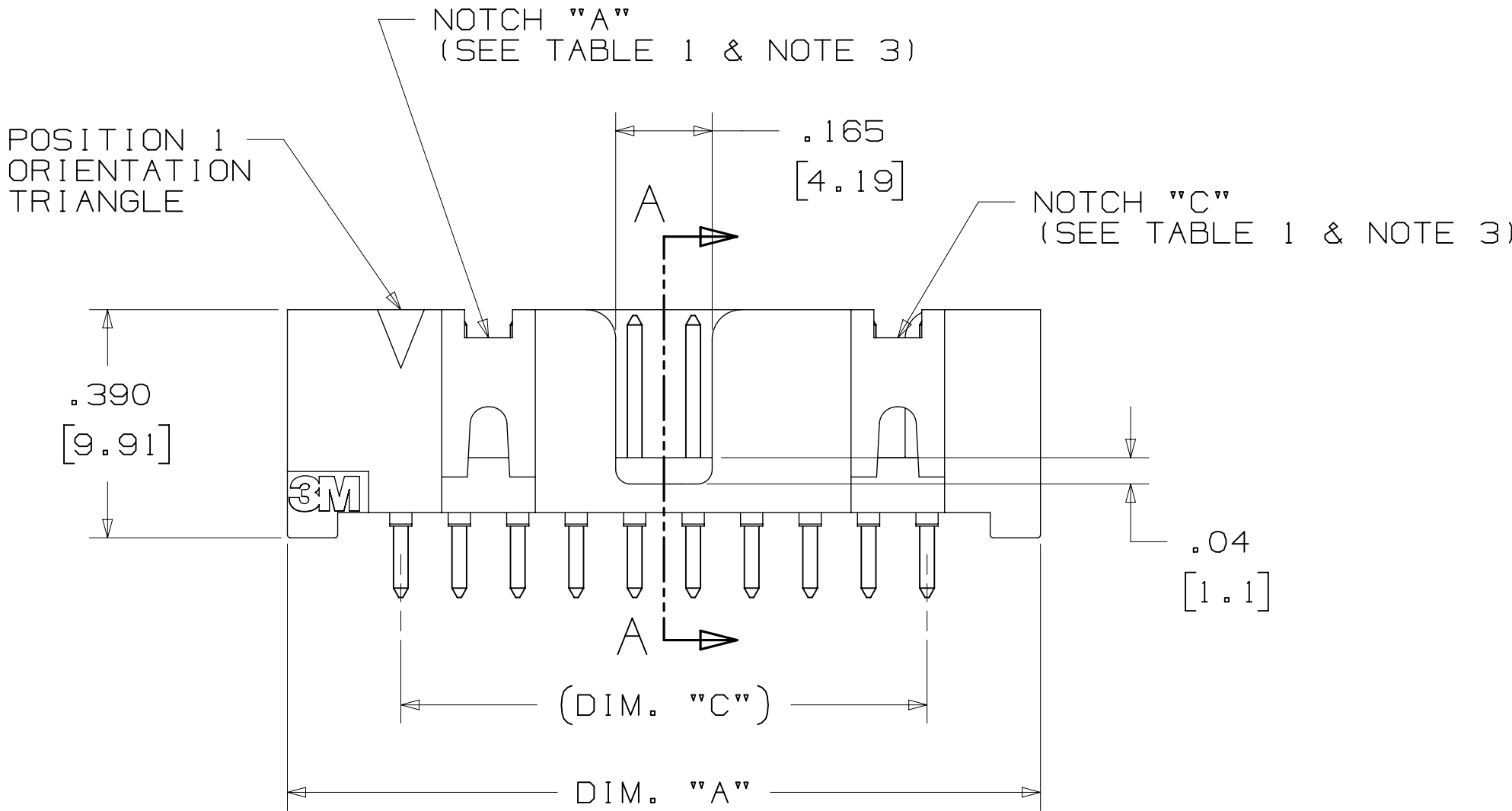
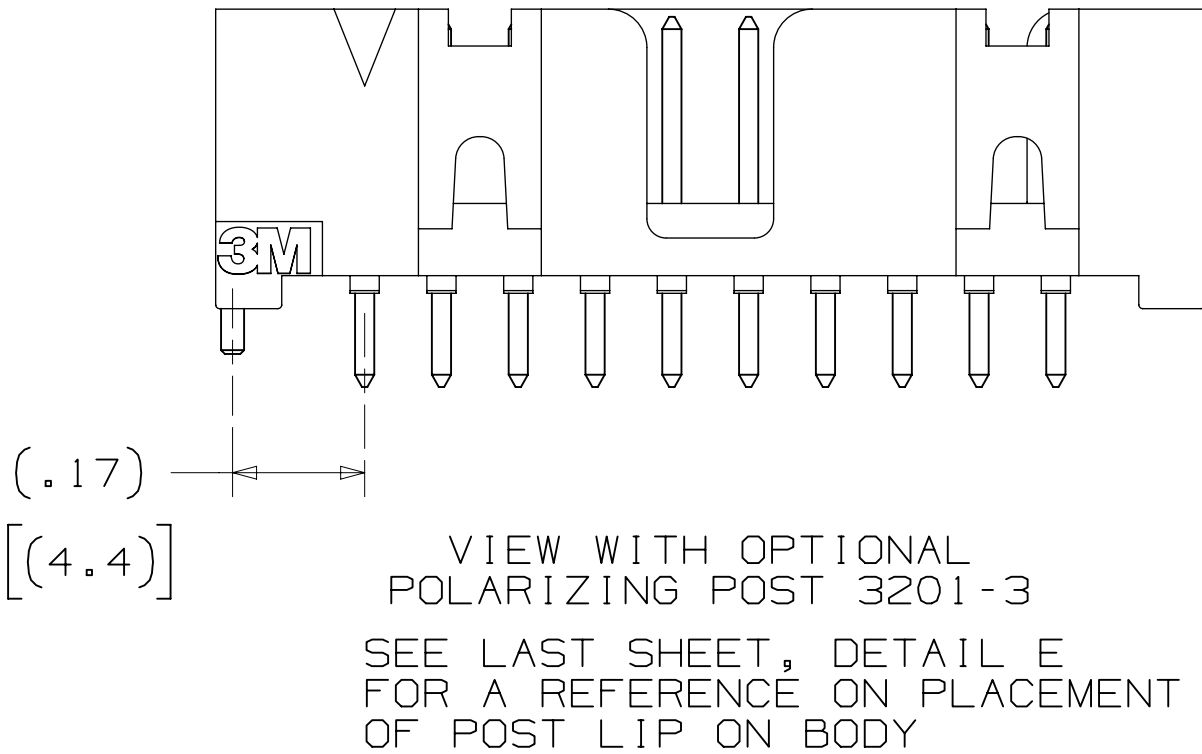
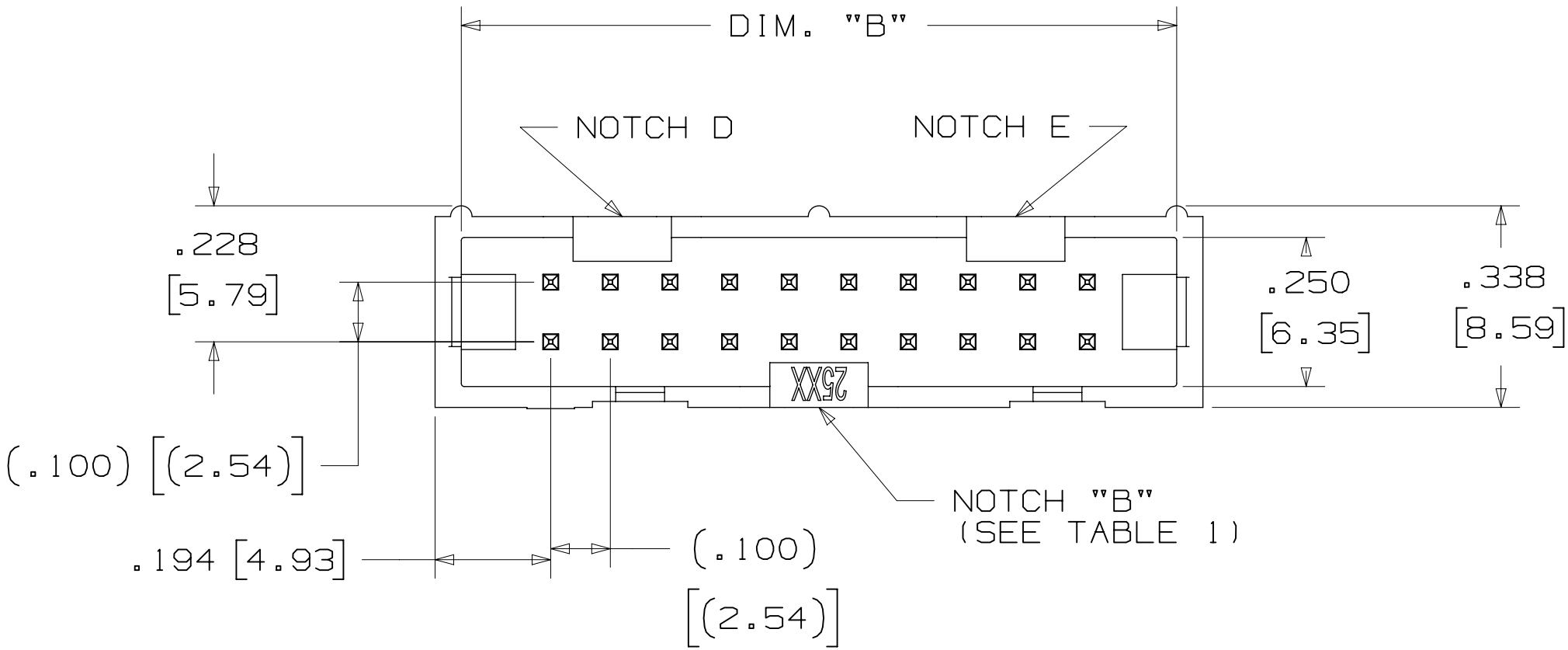


TABLE 1					
PIN QTY.	DIM. "A"	DIM. "B"	DIM. "C"	POLARIZING NOTCHES	PIN QTY.
06	.588 [14.94]	.508 [12.90]	.200 [5.08]	B	06
08	.688 [17.48]	.608 [15.44]	.300 [7.62]	B	08
10	.788 [20.02]	.708 [17.98]	.400 [10.16]	BC	10
14	.988 [25.10]	.908 [23.06]	.600 [15.24]	BCDE	14
16	1.088 [27.64]	1.008 [25.60]	.700 [17.78]	ABCDE	16
20	1.288 [32.72]	1.208 [30.68]	.900 [22.86]	ABCDE	20
24	1.488 [37.80]	1.408 [35.76]	1.100 [27.94]	ABCDE	24
26	1.588 [40.34]	1.508 [38.30]	1.200 [30.48]	ABCDE	26
30	1.788 [45.42]	1.708 [43.38]	1.400 [35.56]	ABCDE	30
34	1.988 [50.50]	1.908 [48.46]	1.600 [40.64]	ABCDE	34
36	2.088 [53.04]	2.008 [51.00]	1.700 [43.18]	ABCDE	36
40	2.288 [58.12]	2.208 [56.08]	1.900 [48.26]	ABCDE	40
50	2.788 [70.82]	2.708 [68.78]	2.400 [60.96]	ABCDE	50
60	3.288 [83.52]	3.208 [81.48]	2.900 [73.66]	ABCDE	60
64	3.488 [88.60]	3.408 [86.56]	3.100 [78.74]	ABCDE	64



ORDERING INFORMATION
STRAIGHT VERSION

X25XX-60XX-XX

N = RB PLATING REQ'D
D = AR PLATING REQ'D (02 SOLDER TAIL ONLY)

PIN QUANTITY: (SEE TABLE 1)

SOLDER TAIL:
02 = FOR .062 [1.57] THICK BOARD
03 = FOR .094 TO .125 [2.39 TO 3.18] THICK BOARD (SOLDER TAIL LENGTH ONLY AVAILABLE ON N25XX-60XX-RB)

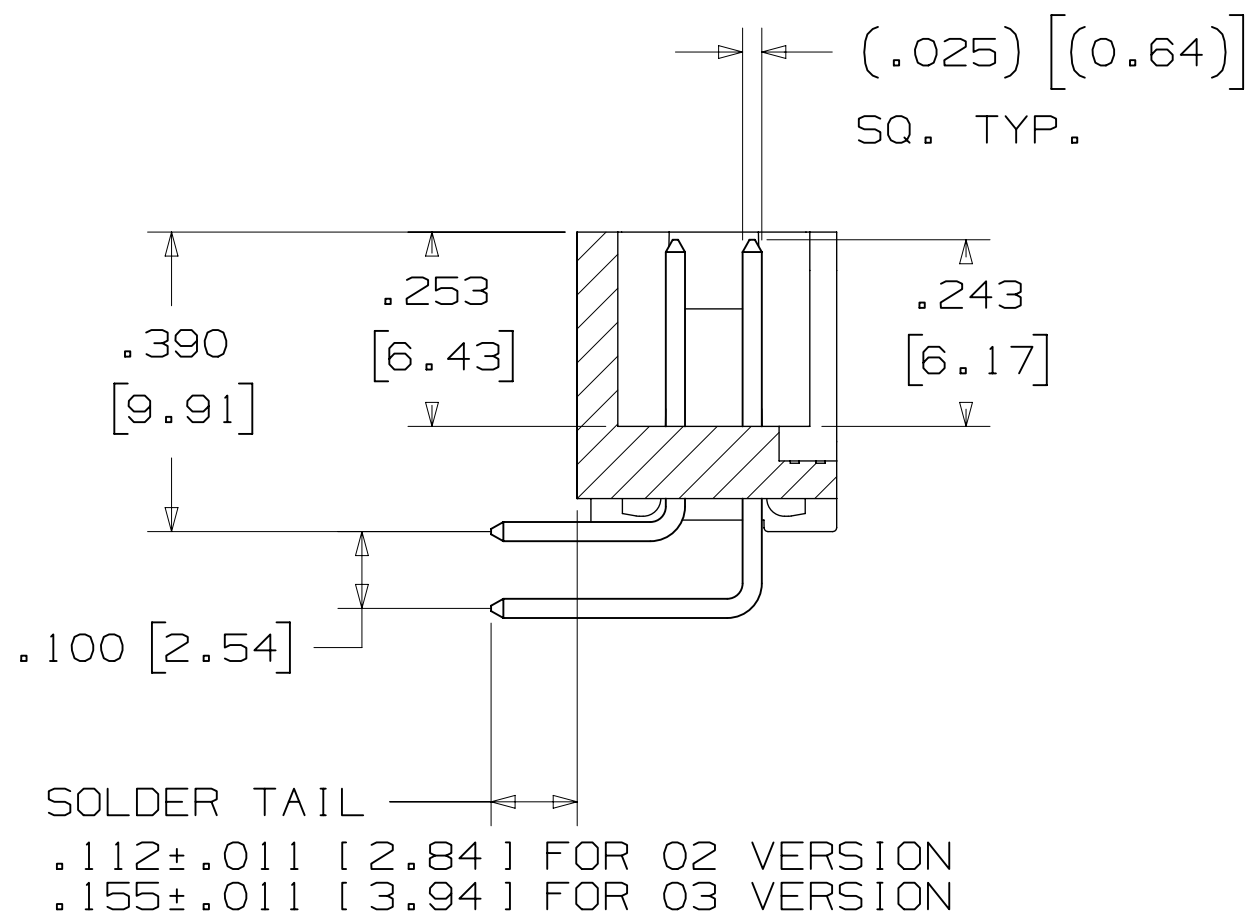
PLATING:
AR = 10μ" [0.25μm] GOLD AVG.
50μ-150μ [1.27μm-3.81μm] NICKEL UNDERPLATE
40μ-120μ [1.02μm-3.05μm] MATTE TIN (RIA, E1 & C1 APPLY)

RB = 30μ" [0.76μm] GOLD AVG.
50μ-150μ [1.27μm-3.81μm] NICKEL UNDERPLATE
25μ-200μ [0.63μm-5.08μm] MATTE TIN (RIA, E1 & C1 APPLY)

RECOMMENDED HOLE PATTERN
SHOWN FROM COMPONENT SIDE

DESIGN REFERENCE		NEXT ASSEMBLY		REV	ECO	ISSUE DATE AND DESCRIPTION		DRFT	CHKD
X25XX-60XX-XX				REV	ECO	ISSUE DATE AND DESCRIPTION		DRFT	CHKD
DIVISION		DIVISION CODE		DATE		DATE		DATE	
Interconnect Solutions		EMSD		AUG 11, 2014		AUG 11, 2014		SEP 05, 2014	
DO NOT SCALE DRAWING		SCALE 4/1		TOLERANCES EXCEPT AS NOTED		INCHES .00 ±.01 .000 ±.005 .0000 ±.0002		MILLIMETERS 0 ±.2 .00 ±.13 .000 ±.005	
THIRD ANGLE PROJECTION		INTERPRET PER ASME Y14.5 - 2018		MAX SURFACE ROUGHNESS		SURFACES		MARKED ONLY	
TITLE		HEADER, 4-WALL, LO-PRO, .100 X .100, SMT, STRAIGHT & RA		CAGE NUMBER		DRAWING NO. D78-5100-0770-7		REV. P	
MODEL		2500 SERIES		DET		YES		NO	
								SHT 2 OF 6	

3M™ FOUR-WALL HEADER, 2500 SERIES
.100" X .100" LOW PROFILE, SURFACE MOUNT, STRAIGHT AND RIGHT ANGLE THROUGH-HOLE



SECTION B - B

TABLE 1					
PIN QTY.	DIM. "A"	DIM. "B"	DIM. "C"	POLARIZING NOTCHES	PIN QTY.
06	.588 [14.94]	.508 [12.90]	.200 [5.08]	B	06
08	.688 [17.48]	.608 [15.44]	.300 [7.62]	B	08
10	.788 [20.02]	.708 [17.98]	.400 [10.16]	BC	10
14	.988 [25.10]	.908 [23.06]	.600 [15.24]	BCDE	14
16	1.088 [27.64]	1.008 [25.60]	.700 [17.78]	ABCDE	16
20	1.288 [32.72]	1.208 [30.68]	.900 [22.86]	ABCDE	20
24	1.488 [37.80]	1.408 [35.76]	1.100 [27.94]	ABCDE	24
26	1.588 [40.34]	1.508 [38.30]	1.200 [30.48]	ABCDE	26
30	1.788 [45.42]	1.708 [43.38]	1.400 [35.56]	ABCDE	30
34	1.988 [50.50]	1.908 [48.46]	1.600 [40.64]	ABCDE	34
36	2.088 [53.04]	2.008 [51.00]	1.700 [43.18]	ABCDE	36
40	2.288 [58.12]	2.208 [56.08]	1.900 [48.26]	ABCDE	40
50	2.788 [70.82]	2.708 [68.78]	2.400 [60.96]	ABCDE	50
60	3.288 [83.52]	3.208 [81.48]	2.900 [73.66]	ABCDE	60
64	3.488 [88.60]	3.408 [86.56]	3.100 [78.74]	ABCDE	64

ORDERING INFORMATION
RIGHT ANGLE VERSION

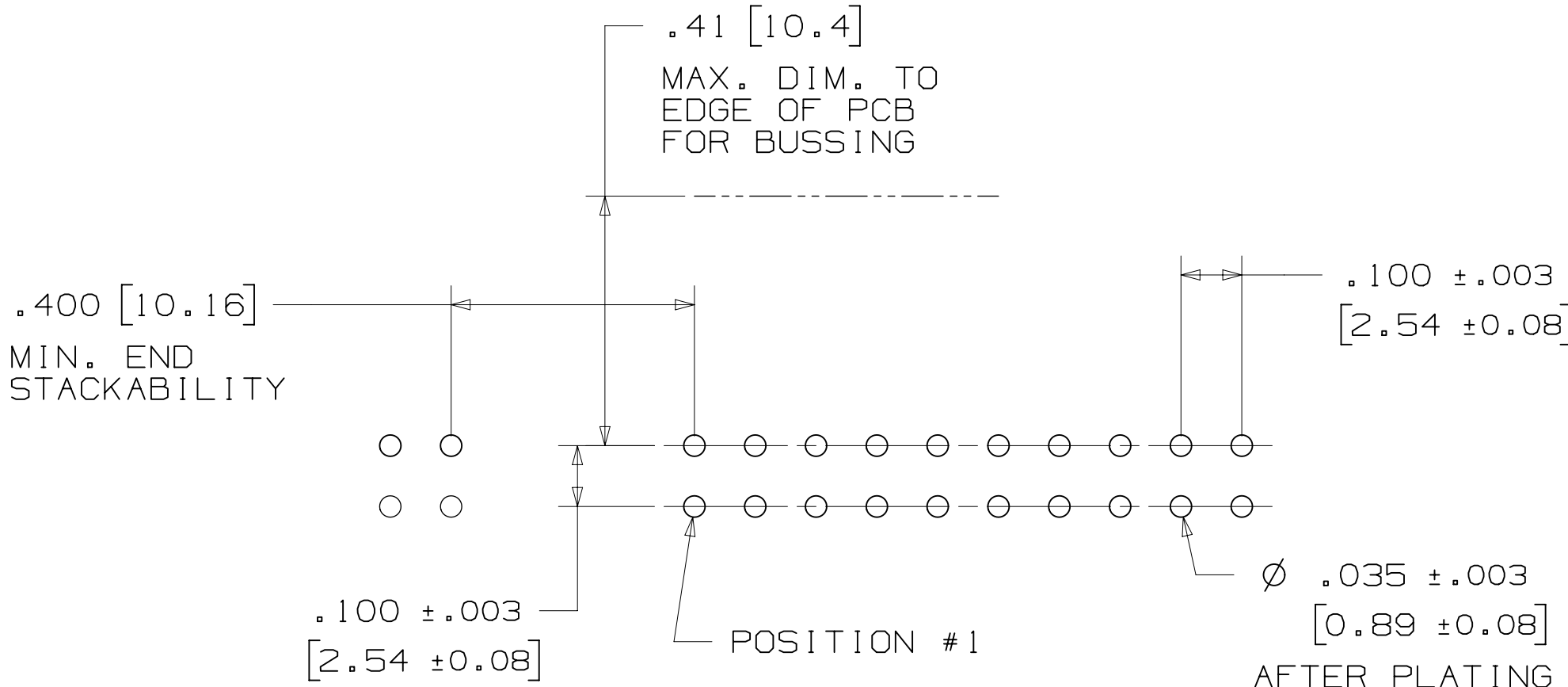
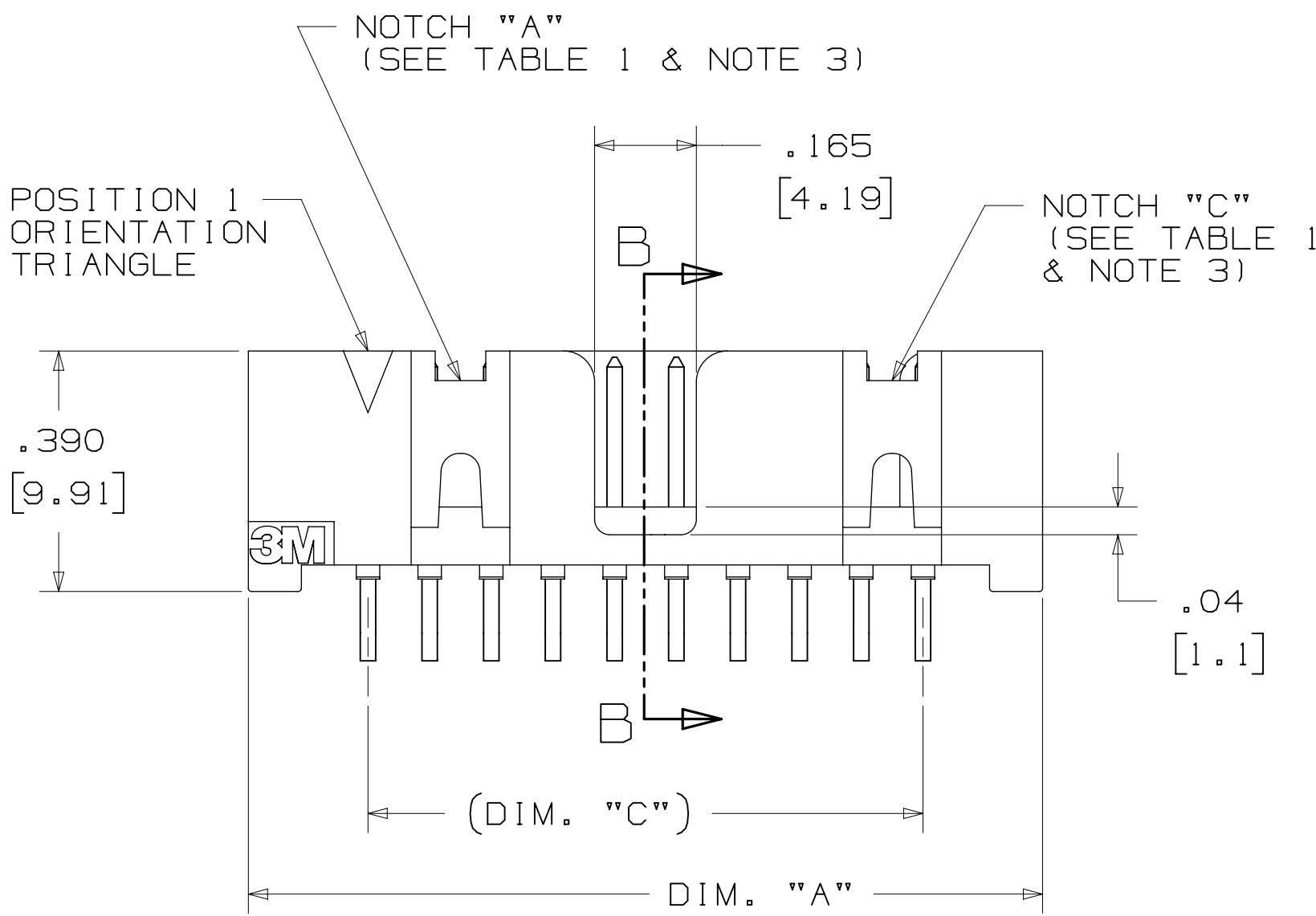
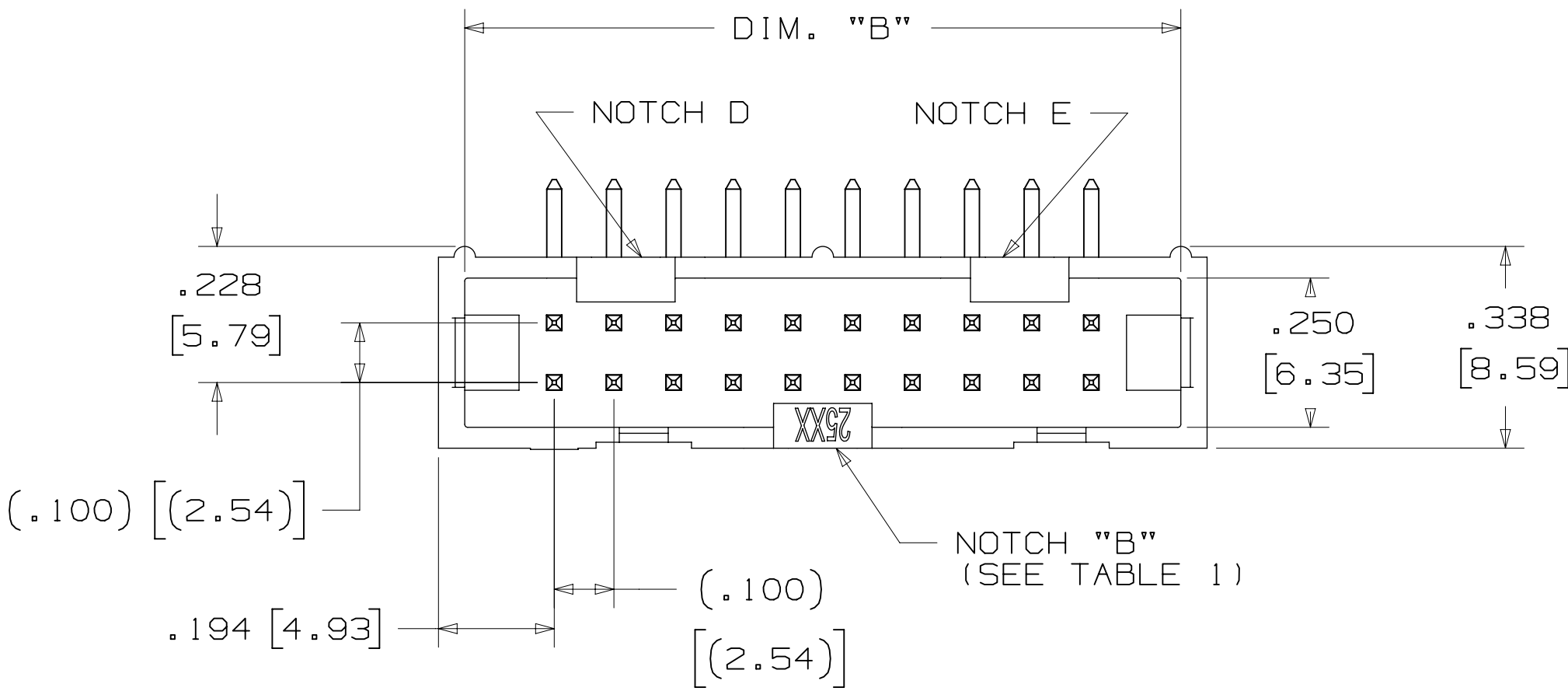
X25XX-50XX-XX

N = RB PLATING REQ'D
D = AR PLATING REQ'D
(02 SOLDER TAIL ONLY)

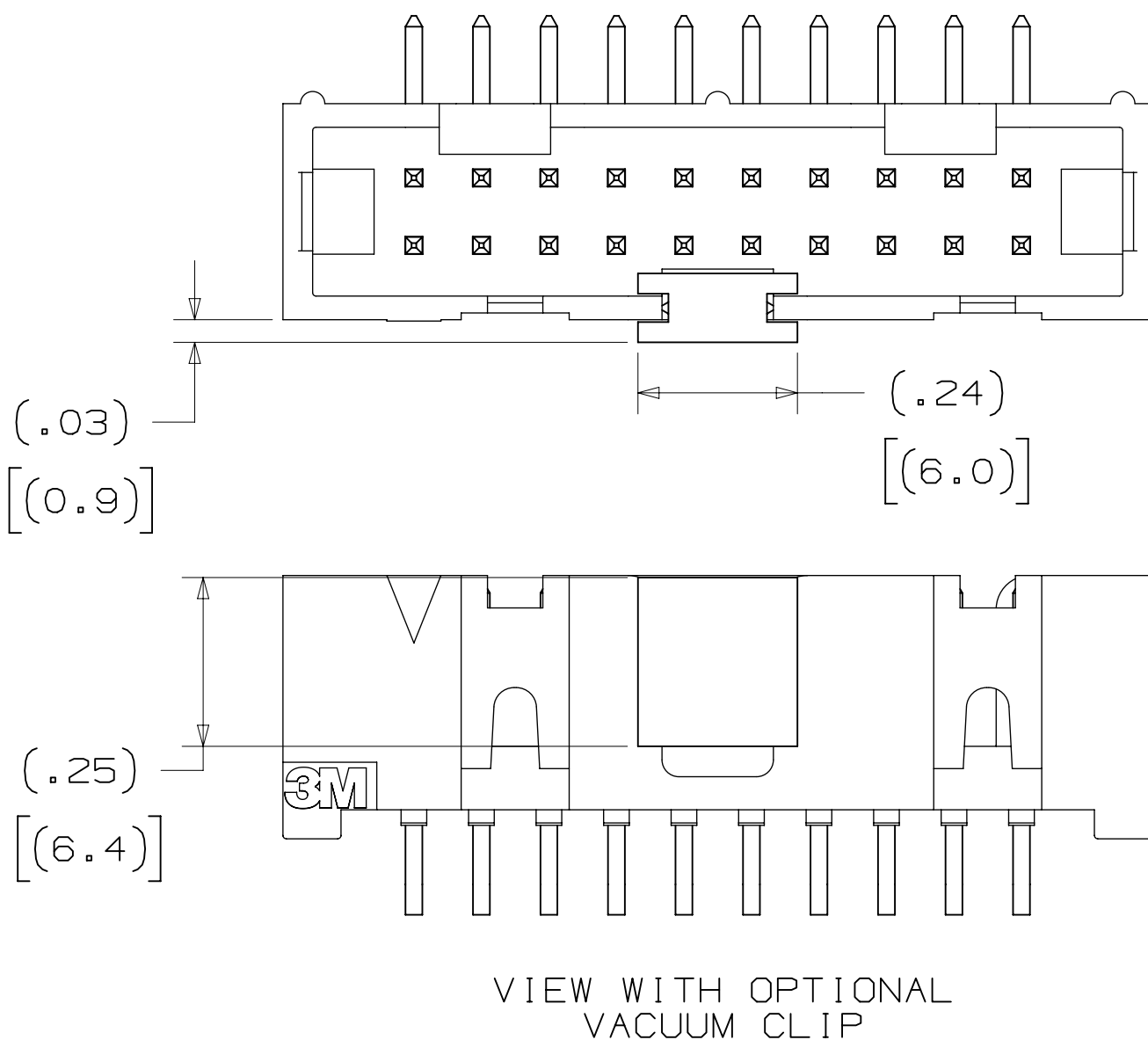
PIN QUANTITY:
(SEE TABLE 1)

SOLDER TAIL:
02 = FOR .062 [1.57] THICK BOARD
03 = FOR .094 TO .125 [2.39 TO 3.18]
THICK BOARD (SOLDER TAIL LENGTH ONLY
AVAILABLE ON N25XX-50XX-RB)

PLATING:
AR = 10μ" [0.25μm] GOLD AVG.
50μ-150μ [1.27μm-3.81μm] NICKEL UNDERPLATE
40μ-120μ [1.02μm-3.05μm] MATTE TIN (RIA, E1 & C1 APPLY)
RB = 30μ" [0.76μm] GOLD AVG.
50μ-150μ [1.27μm-3.81μm] NICKEL UNDERPLATE
25μ-200μ [0.63μm-5.08μm] MATTE TIN (RIA, E1 & C1 APPLY)



RECOMMENDED HOLE PATTERN
SHOWN FROM COMPONENT SIDE



DESIGN REFERENCE		NEXT ASSEMBLY		REV	ECO	ISSUE DATE AND DESCRIPTION		DRFT	CHKD
X25XX-50XX-XX		X25XX-50XX-XX		REV	ECO	ISSUE DATE AND DESCRIPTION		DRFT	CHKD
DIVISION		DIVISION CODE		REV	ECO	ISSUE DATE AND DESCRIPTION		DRFT	CHKD
Interconnect Solutions		EMSD		REV	ECO	ISSUE DATE AND DESCRIPTION		DRFT	CHKD
DO NOT SCALE DRAWING		SCALE 4 1		REV	ECO	ISSUE DATE AND DESCRIPTION		DRFT	CHKD
THIRD ANGLE PROJECTION		TOLERANCES EXCEPT AS NOTED		REV	ECO	ISSUE DATE AND DESCRIPTION		DRFT	CHKD
INTERPRET PER ASME Y14.5 - 2018		TOLERANCES EXCEPT AS NOTED		REV	ECO	ISSUE DATE AND DESCRIPTION		DRFT	CHKD
MAX SURFACE ROUGHNESS		TOLERANCES EXCEPT AS NOTED		REV	ECO	ISSUE DATE AND DESCRIPTION		DRFT	CHKD
MARKED ONLY		TOLERANCES EXCEPT AS NOTED		REV	ECO	ISSUE DATE AND DESCRIPTION		DRFT	CHKD
TITLE		CAGE NUMBER		REV	ECO	ISSUE DATE AND DESCRIPTION		DRFT	CHKD
HEADER, 4-WALL, LO-PRO, .100 X .100, SMT, STRAIGHT & RA		D78-5100-0770-7		REV	ECO	ISSUE DATE AND DESCRIPTION		DRFT	CHKD
MODEL		2500 SERIES		REV	ECO	ISSUE DATE AND DESCRIPTION		DRFT	CHKD

3M™ FOUR-WALL HEADER, 2500 SERIES
.100" X .100" LOW PROFILE, SURFACE MOUNT, STRAIGHT AND RIGHT ANGLE THROUGH-HOLE

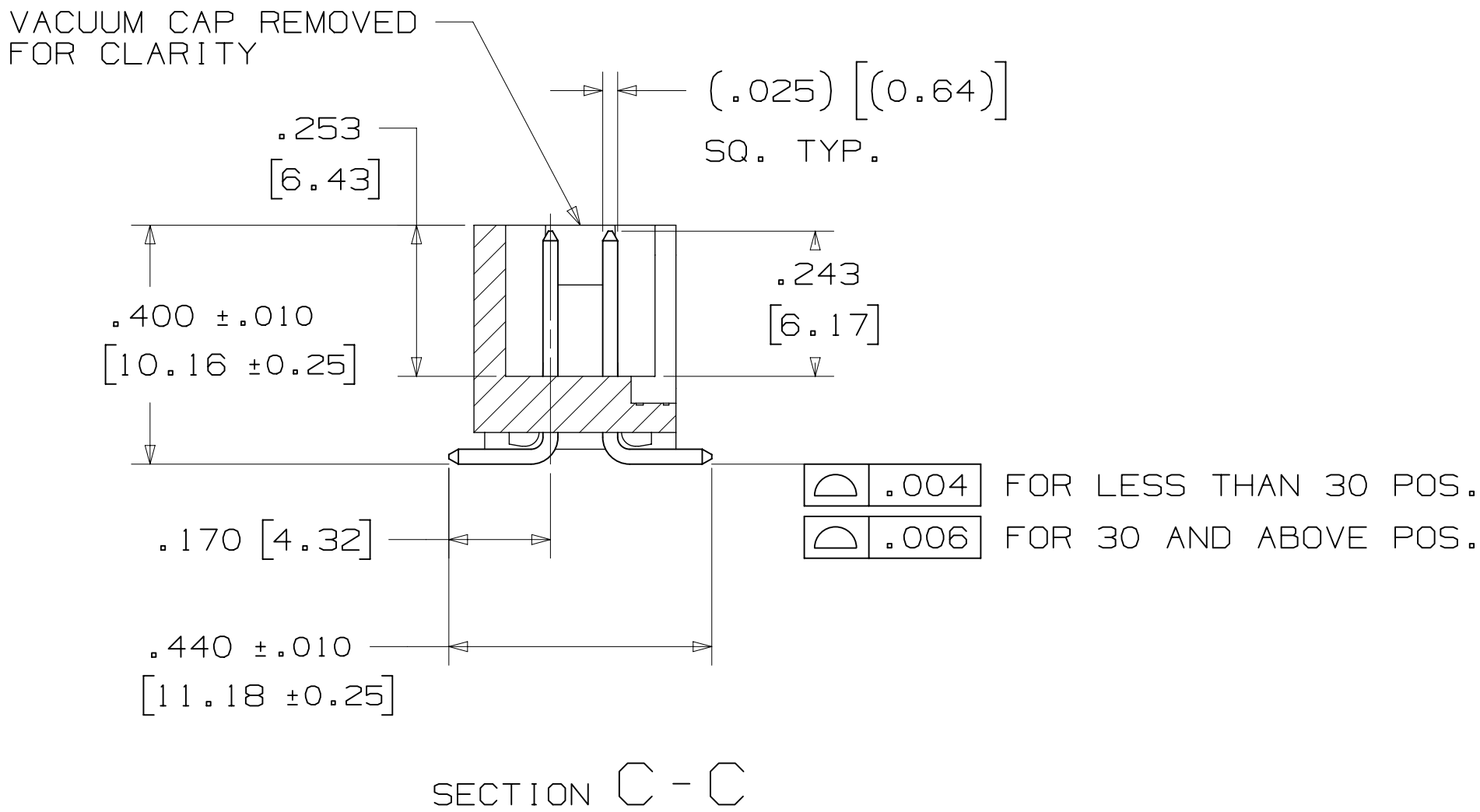


TABLE 1						
PIN QTY.	DIM. "A"	DIM. "B"	DIM. "C"	POLARIZING NOTCHES	TAPE AND REEL PKG CODE	PIN QTY.
06	.588 [14.94]	.508 [12.90]	.200 [5.08]	B	WD (44 MM)	06
08	.688 [17.48]	.608 [15.44]	.300 [7.62]	B	WD (44 MM)	08
10	.788 [20.02]	.708 [17.98]	.400 [10.16]	BC	WD (44 MM)	10
14	.988 [25.10]	.908 [23.06]	.600 [15.24]	BCDE	WD (44 MM)	14
16	1.088 [27.64]	1.008 [25.60]	.700 [17.78]	ABCDE	WD (44 MM)	16
20	1.288 [32.72]	1.208 [30.68]	.900 [22.86]	ABCDE	WE (56 MM)	20
24	1.488 [37.80]	1.408 [35.76]	1.100 [27.94]	ABCDE	WE (56 MM)	24
26	1.588 [40.34]	1.508 [38.30]	1.200 [30.48]	ABCDE	WE (56 MM)	26
30	1.788 [45.42]	1.708 [43.38]	1.400 [35.56]	ABCDE	WF (72 MM)	30
34	1.988 [50.50]	1.908 [48.46]	1.600 [40.64]	ABCDE	WF (72 MM)	34
36	2.088 [53.04]	2.008 [51.00]	1.700 [43.18]	ABCDE	WG (88 MM)	36
40	2.288 [58.12]	2.208 [56.08]	1.900 [48.26]	ABCDE	WG (88 MM)	40
50	2.788 [70.82]	2.708 [68.78]	2.400 [60.96]	ABCDE	WG (88 MM)	50
60	3.288 [83.52]	3.208 [81.48]	2.900 [73.66]	ABCDE	WH (120 MM)	60
64	3.488 [88.60]	3.408 [86.56]	3.100 [78.74]	ABCDE	WH (120 MM)	64

ORDERING INFORMATION
SURFACE MOUNT VERSION
X25XX-6VOC-XX-XX

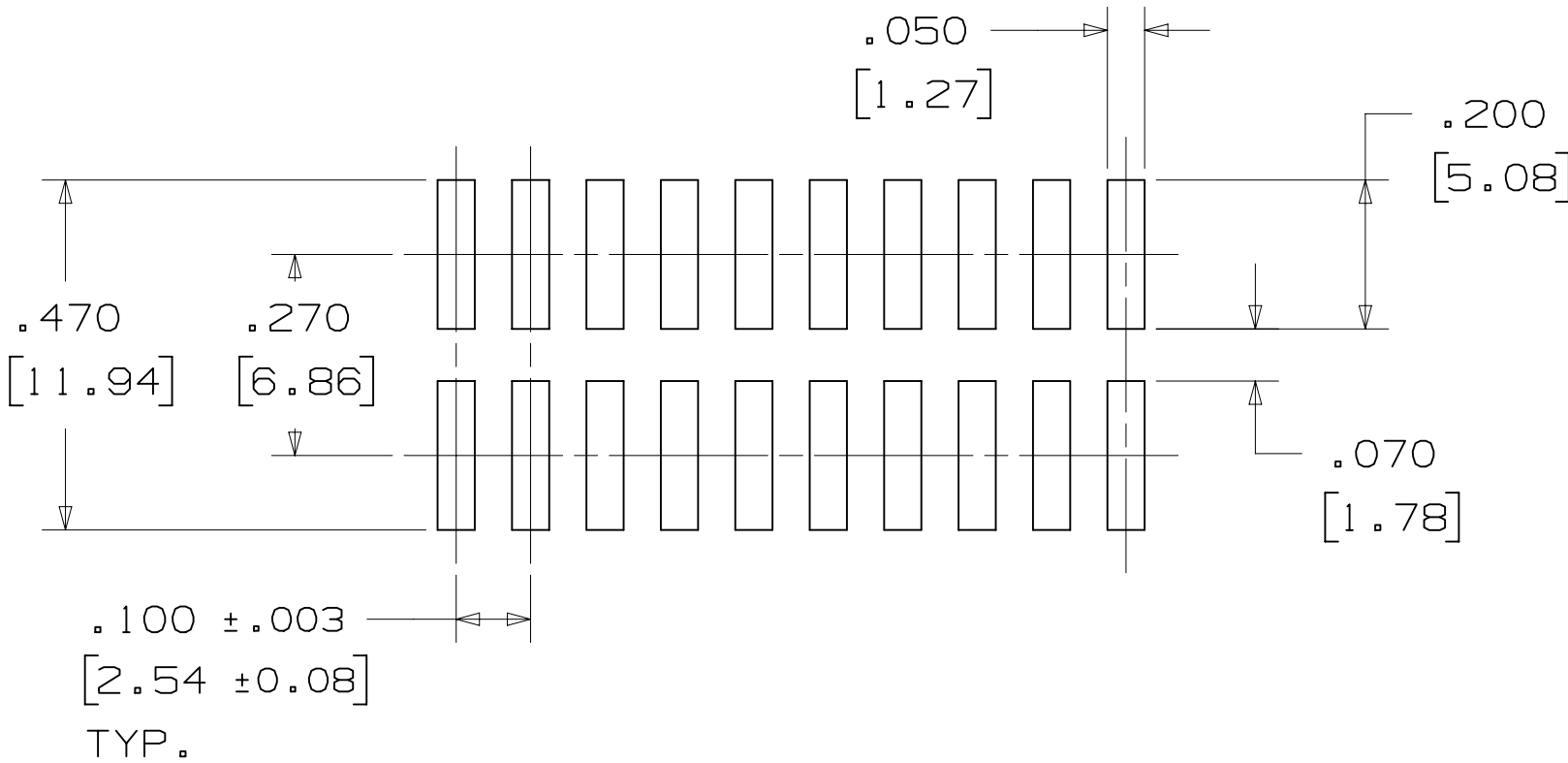
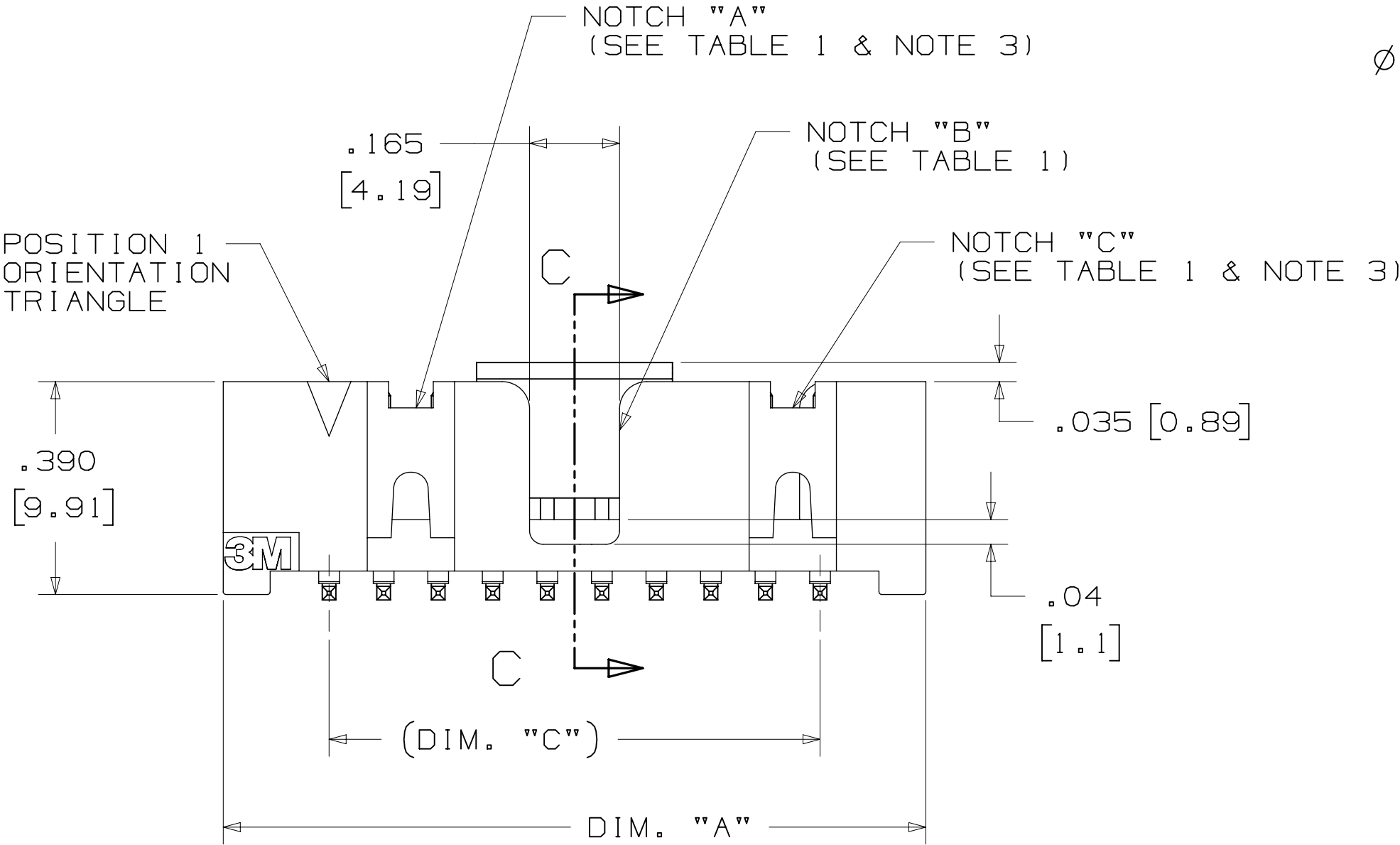
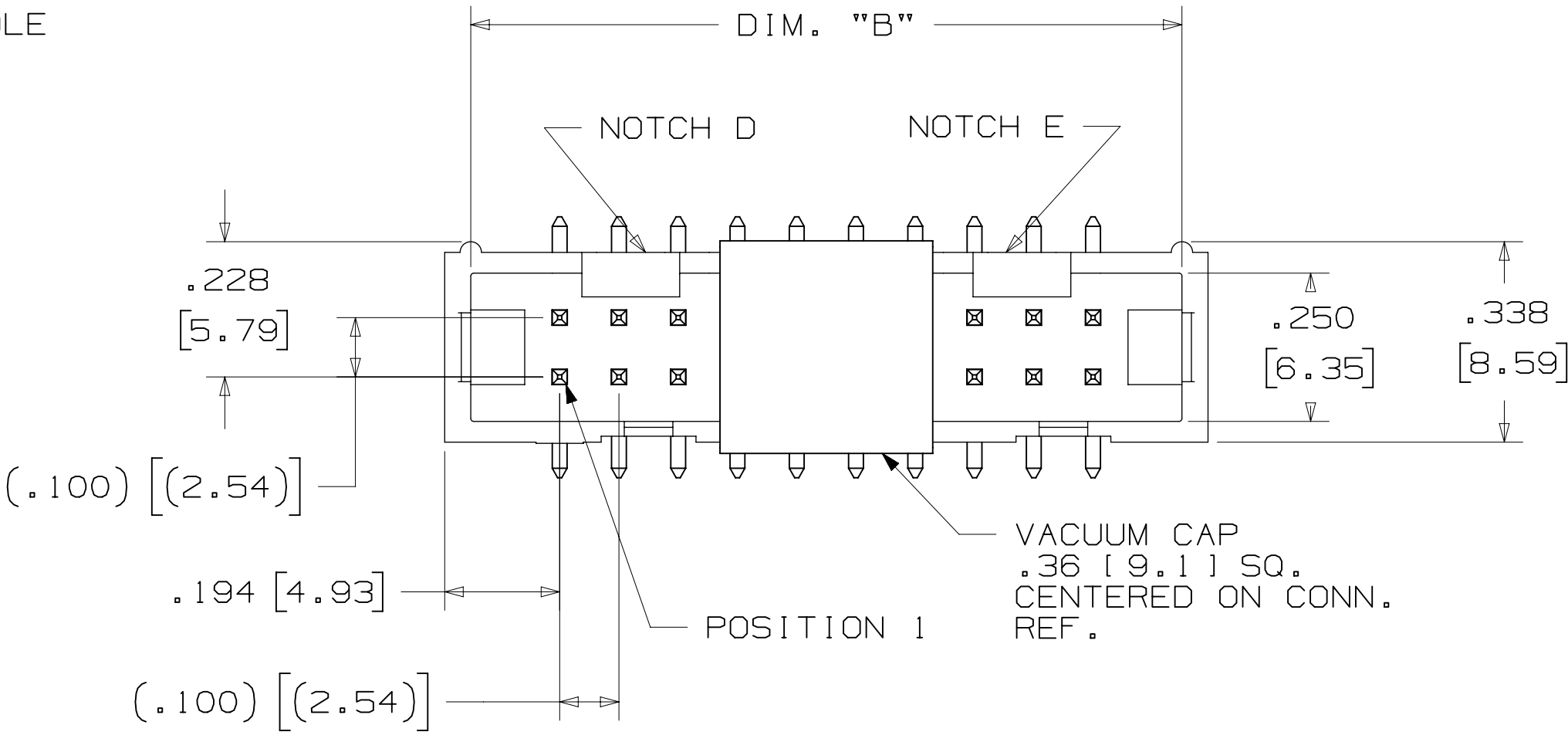
N = RB PLATING REQ'D
D = AR PLATING REQ'D

PIN QUANTITY:
(SEE TABLE 1)

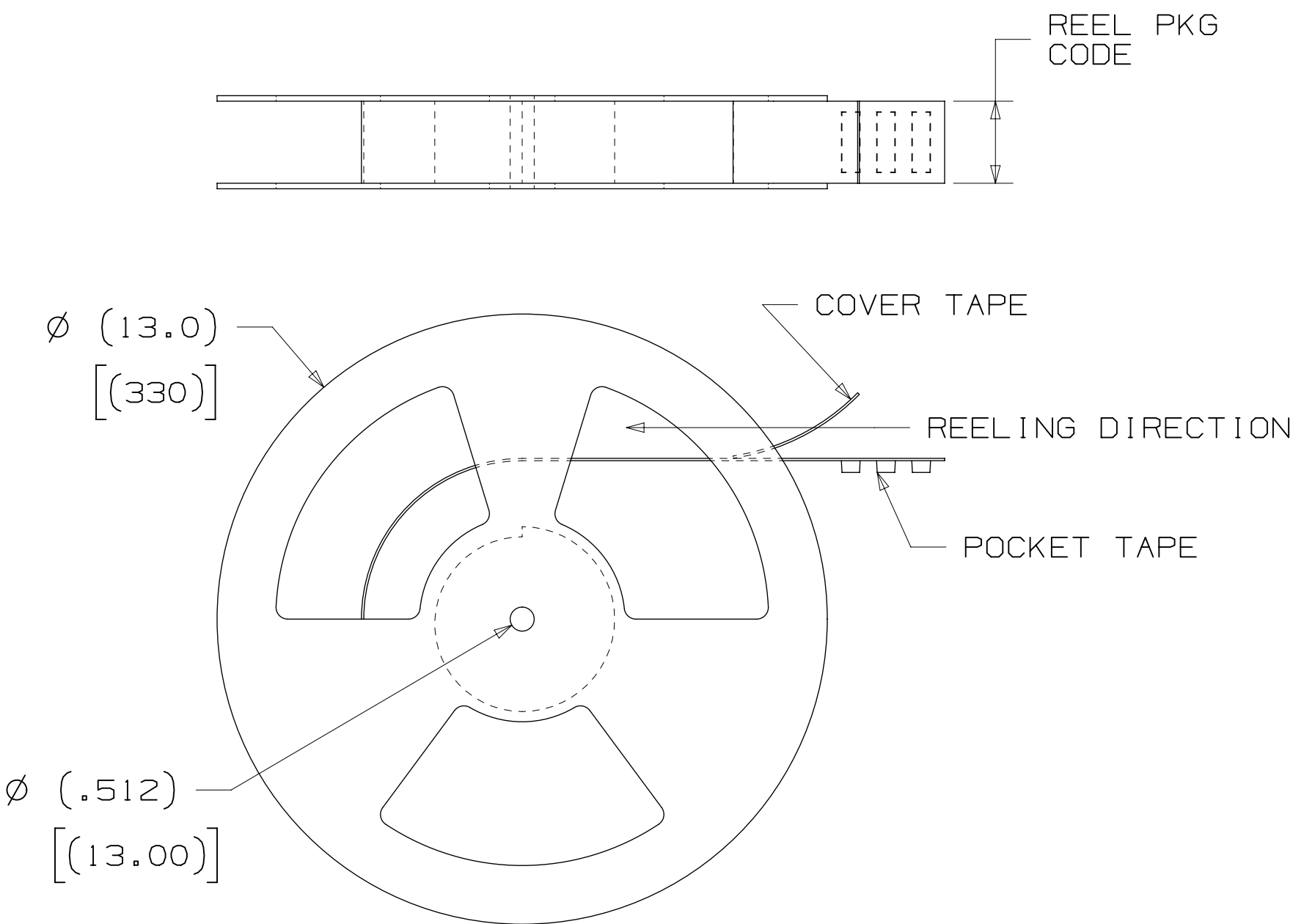
PACKAGING OPTIONS:
WX = TAPE & REEL PACKAGING (SEE TABLE 1)

PLATING:
AR = 10µ" [0.25µm] GOLD AVG.
50µ-150µ [1.27µm-3.81µm] NICKEL UNDERPLATE
40µ-120µ" [1.02µm-3.05µm] MATTE TIN (RIA. E1 & C1 APPLY)

RB = 30µ" [0.76µm] GOLD AVG.
50µ-150µ [1.27µm-3.81µm] NICKEL UNDERPLATE
25µ-200µ" [0.63µm-5.08µm] MATTE TIN (RIA. E1 & C1 APPLY)



RECOMMENDED PAD LAYOUT



DESIGN REFERENCE		NEXT ASSEMBLY		REV	ECO	ISSUE DATE AND DESCRIPTION		DRFT	CHKD
ACCESS CODES				DRFT	CASTIGLIONE	DATE	AUG 11, 2014	MFG	DATE
				CHKD		DATE		APPR	DATE
								R. SCHERER	SEP 05, 2014
DIVISION		DIVISION CODE							
Interconnect Solutions		EMSD							
DO NOT SCALE DRAWING		SCALE 4 1		TOLERANCES EXCEPT AS NOTED					
				INCHES					
				.0		±.1			
				.00		±.01			
				.000		±.005			
				.0000		±.0002			
THIRD ANGLE PROJECTION				MILLIMETERS					
				0		±2			
				INTERPRET PER ASME Y14.5 - 2018					
				.0		±.3			
				.00		±.13			
				.000		±.005			
MAX SURFACE ROUGHNESS		MAX SURFACES							
✓		✓							
✓		✓							
✓		✓							
✓		✓							
✓		✓							
✓		✓							
✓		✓							
✓		✓							
✓		✓							
✓		✓							
✓		✓							
✓		✓							
✓		✓							
✓		✓							
✓		✓							
✓		✓							
✓		✓							
✓		✓							
✓		✓							
✓		✓							
✓		✓							
✓		✓							
✓		✓							
✓		✓							
✓		✓							
✓		✓							
✓		✓							
✓		✓							
✓		✓							
✓		✓							
✓		✓							
✓		✓							
✓		✓							
✓		✓							
✓		✓							
✓		✓							
✓		✓							
✓		✓							
✓		✓							
✓		✓							
✓		✓							
✓		✓							
✓		✓							
✓		✓							
✓		✓							
✓		✓							
✓		✓							
✓		✓							
✓		✓							
✓		✓							
✓		✓							
✓		✓							
✓		✓							
✓		✓							
✓		✓							
✓		✓							
✓		✓							
✓		✓							
✓		✓							
✓		✓							
✓		✓							
✓		✓							
✓		✓							
✓		✓							
✓		✓							
✓		✓							
✓		✓							
✓		✓							
✓		✓							
✓		✓							
✓		✓							
✓		✓							
✓		✓							
✓		✓							
✓		✓							
✓		✓							
✓		✓							
✓		✓							
✓		✓							
✓		✓							
✓		✓							
✓		✓							
✓		✓							
✓		✓							
✓		✓							
✓		✓							
✓		✓							
✓		✓							
✓		✓							
✓		✓							
✓		✓							
✓		✓							
✓		✓							
✓		✓							
✓		✓							
✓		✓							
✓		✓							
✓		✓							
✓		✓							
✓		✓							
✓		✓							
✓		✓							
✓		✓							
✓		✓							
✓		✓							
✓		✓							
✓		✓							
✓		✓							
✓		✓							
✓		✓							
✓		✓							
✓		✓							
✓		✓							
✓		✓							
✓		✓							
✓		✓							
✓		✓							
✓		✓							
✓		✓							
✓		✓							
✓		✓							
✓		✓							
✓		✓							
✓		✓							
✓		✓							
✓		✓							
✓		✓							
✓		✓							
✓		✓							
✓		✓							
✓		✓							
✓		✓							
✓		✓							
✓		✓							
✓		✓							
✓		✓							
✓		✓							
✓		✓							
✓		✓							
✓		✓							
✓		✓							
✓		✓							
✓		✓							
✓		✓							
✓		✓							
✓		✓							
✓		✓							
✓		✓							
✓		✓							
✓		✓							
✓		✓							
✓		✓							
✓		✓							
✓		✓							
✓		✓							
✓		✓							
✓		✓							
✓		✓							
✓		✓							
✓		✓							
✓		✓							
✓		✓							
✓		✓							
✓		✓							
✓		✓							
✓		✓							
✓		✓							
✓		✓							

3M™ FOUR-WALL HEADER, 2500 SERIES
.100" X .100" LOW PROFILE, SURFACE MOUNT, STRAIGHT AND RIGHT ANGLE THROUGH-HOLE

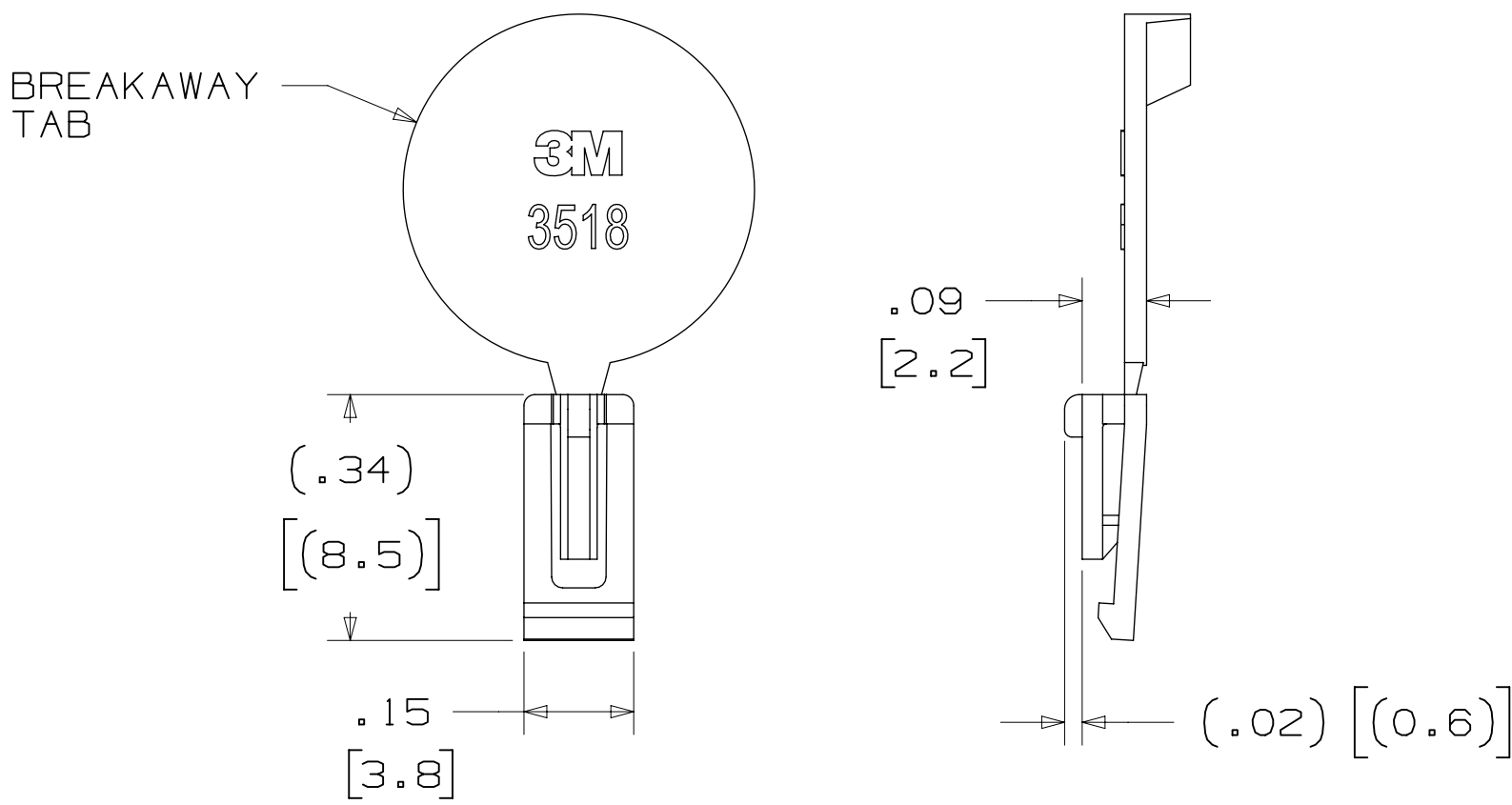
PART CUSTOMIZATION

THIS SPEC SHEET DETAILS OUR STANDARD OFFERING.

3M HAS SEVERAL CAPABILITIES THAT CAN PROVIDE A PART TAILORED TO YOUR SPECIFIC NEEDS. ASK YOUR 3M SALES REPRESENTATIVE OR CUSTOMER SERVICE FOR MORE DETAILS.

- * SELECTIVE PIN REMOVAL (FOR BOARD ASSEMBLY POLARIZATION).
- * DIFFERENT PIN LENGTHS.

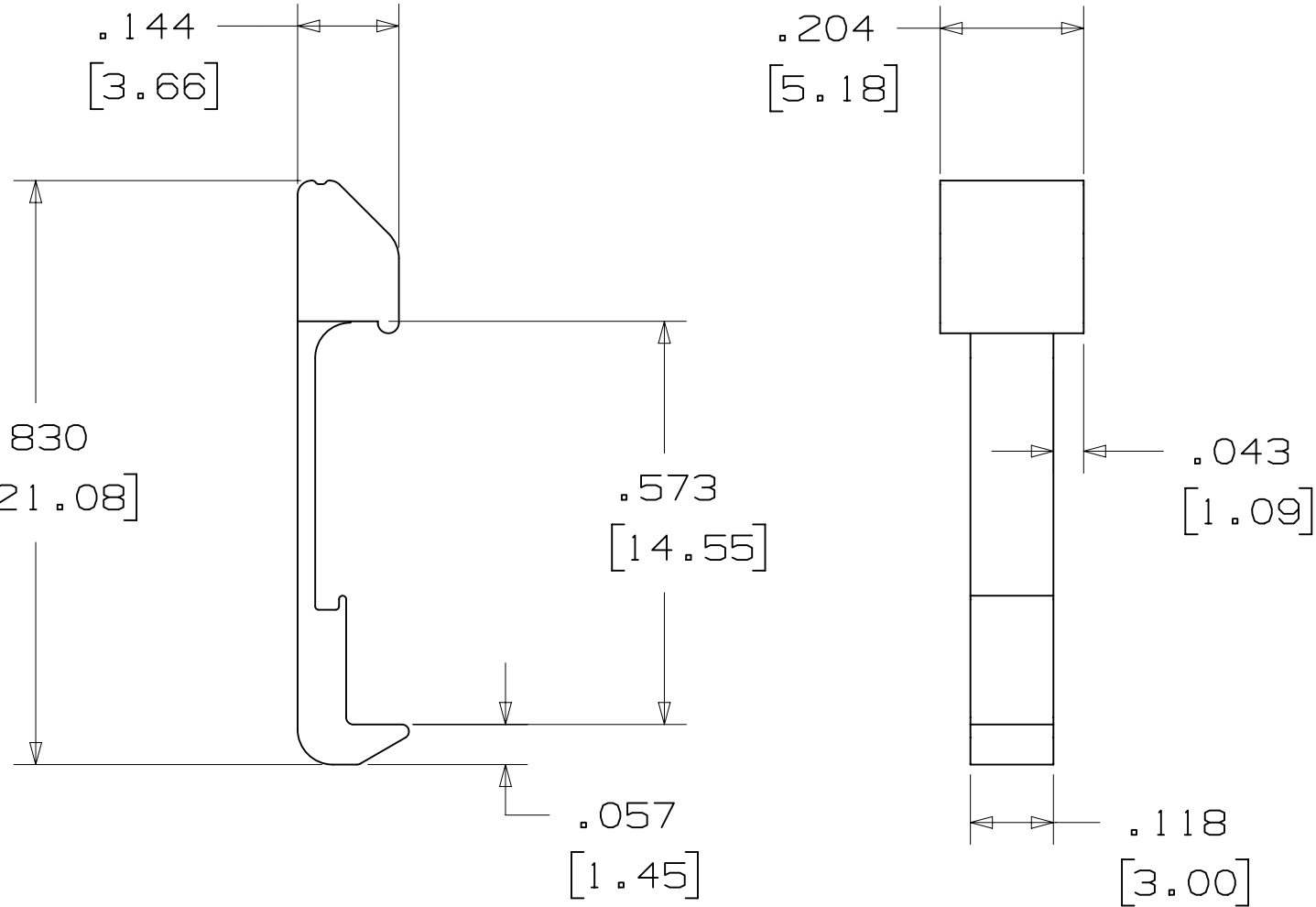
POLARIZING KEY



3M PART NO.	MATERIAL	COLOR
3518	PBT	GRAY
N3518	LCP	BLACK
D3518	PBT	BLACK

NOTE:
1) #2216 B/A SCOTCHWELD CAN BE USED TO ADHERE KEYS.
2) SEE INSTRUCTION SHEET 78-9100-7795-3 FOR ASSEMBLY.

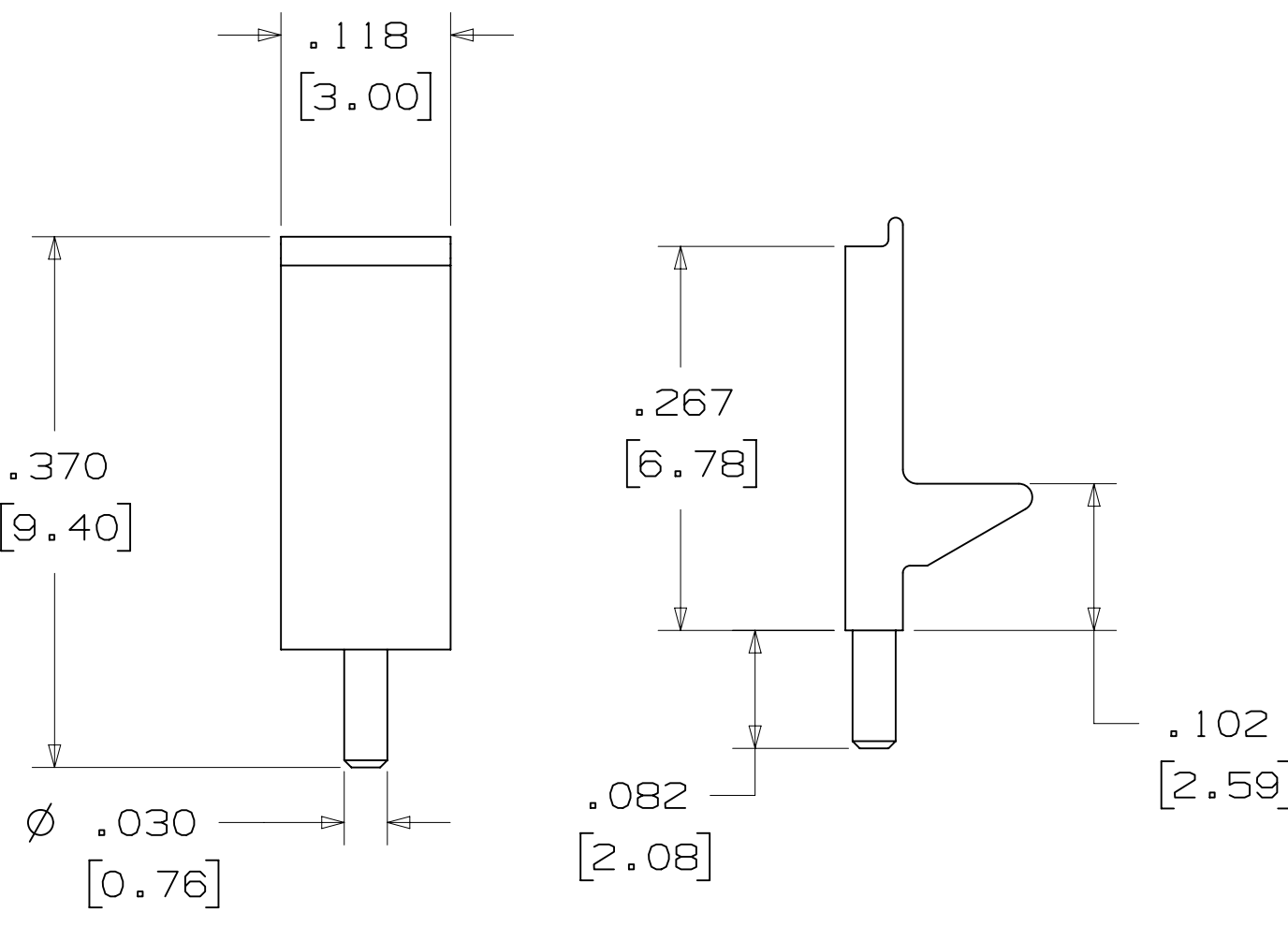
LOW PROFILE LATCH



PART NO.	MATERIAL	COLOR
3505-33B	NYLON	BLACK

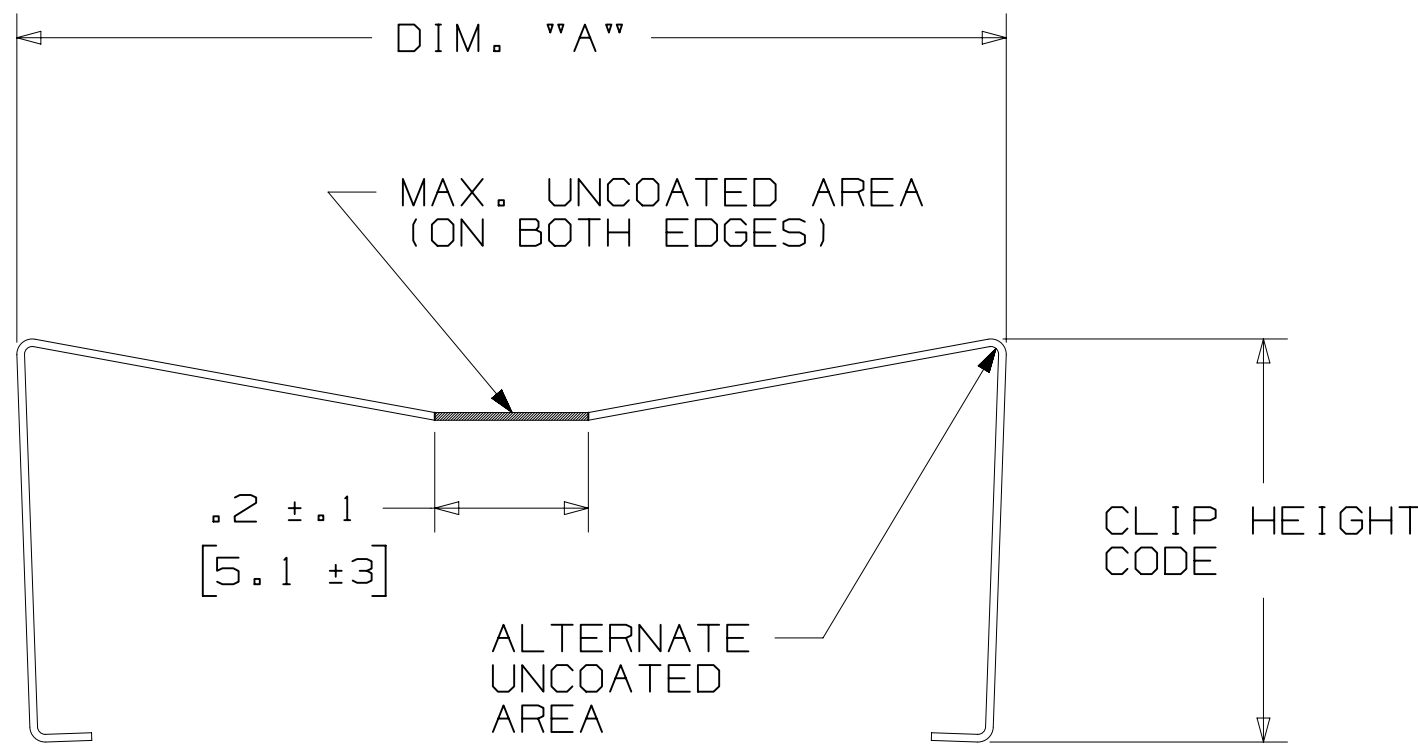
NOTE:
1. LATCHES NOT COMPATIBLE WITH REFLOW SOLDERING.
ATTACH LATCHES AFTER SOLDERING.
2. LATCHES ARE MEANT FOR RETENTION ONLY.
3. SEE LAST SHEET FOR ASSEMBLY.

POLARIZING POST



PART NO.	MATERIAL	COLOR
3201-3	PCT	BLACK

SHORT/LONG SOCKET RETAINER CLIP



PIN QTY.	DIM. "A"
06	N/A
08	N/A
10	.81 (20.6)
14	1.02 (25.9)
16	1.12 (28.4)
20	1.32 (33.5)
24	1.52 (38.7)
26	1.63 (41.4)
30	1.83 (46.4)
34	2.03 (51.6)
36	N/A
40	2.33 (59.2)
50	2.83 (71.9)
60	3.33 (84.6)
64	3.53 (89.7)

NOTE:
STAINLESS STEEL WITH GRAY POLYURETHANE COATING.

3505-8XXX

CLIP HEIGHT CODE — PIN COUNT (SEE TABLE)
0 = .31 (7.9) FOR SOCKETS WITHOUT STRAIN RELIEF
1 = .53 (13.5) FOR SOCKETS WITH STRAIN RELIEF

NOTE:
1) THE FOLLOWING RETAINER CLIPS HAVE BEEN DISCONTINUED:
3505-8064
3505-8124
3505-8150

DESIGN REFERENCE	NEXT ASSEMBLY	REV	ECO	ISSUE DATE AND DESCRIPTION	DRFT	CHKD
XXXX		CAST	GLIONE	AUG 11, 2014		
DIVISION	INTERCONNECT SOLUTIONS	SCALE	4	TOLERANCES EXCEPT AS NOTED	DO NOT SCALE DRAWING	
THIRD ANGLE PROJECTION						
MAX SURFACE ROUGHNESS						
MARKED ONLY						
MODEL	2500 SERIES					
CAGE NUMBER	78-5100-0770-7					
SIZE						
DRAWING NO.						
REV.						
DET						
YES						
NO						
SHT						
5						
OF						
6						

3M™ FOUR-WALL HEADER, 2500 SERIES

.100" X .100" LOW PROFILE, SURFACE MOUNT, STRAIGHT AND RIGHT ANGLE THROUGH-HOLE

Regulatory: For regulatory information about this product, visit 3M.com/regs or contact your 3M representative.

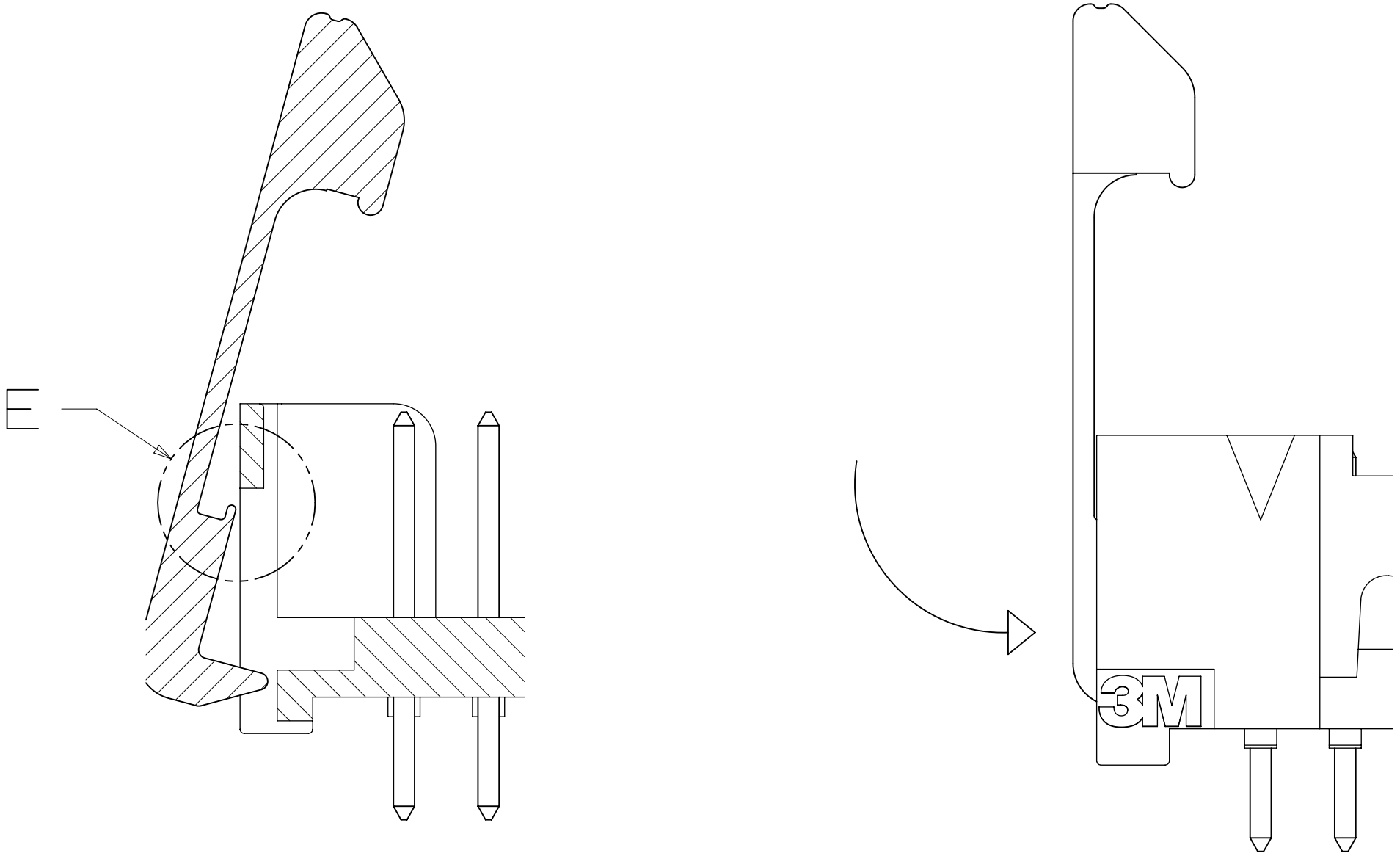
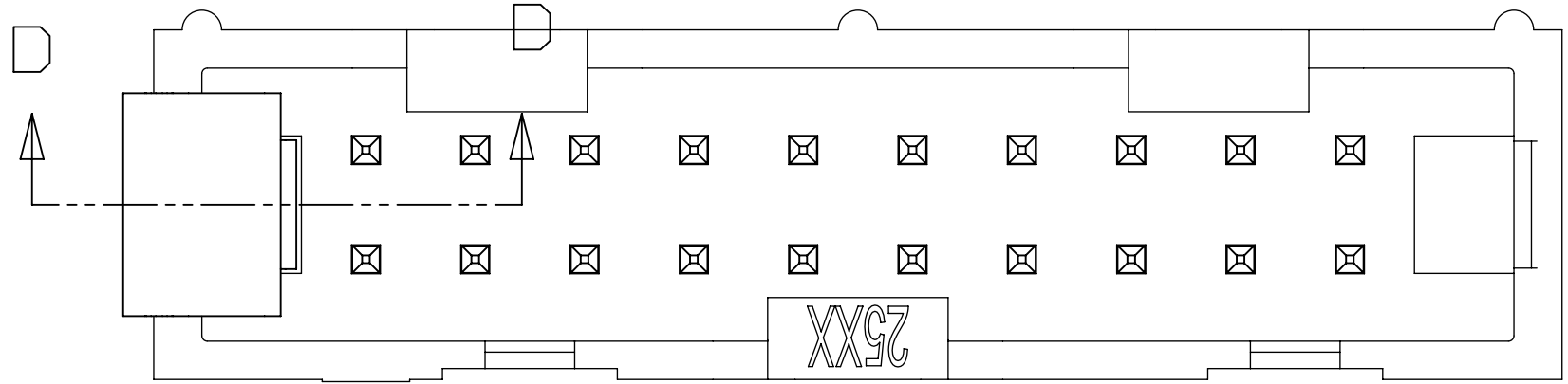
Technical Information: The technical information, recommendations and other statements contained in this document are based upon tests or experience that 3M believes are reliable, but the accuracy or completeness of such information is not guaranteed.

Product Use: Many factors beyond 3M's control and uniquely within user's control can affect the use and performance of a 3M product in a particular application. Given the variety of factors that can affect the use and performance of a 3M product, user is solely responsible for evaluating the 3M product and determining whether it is fit for a particular purpose and suitable for user's method of application.

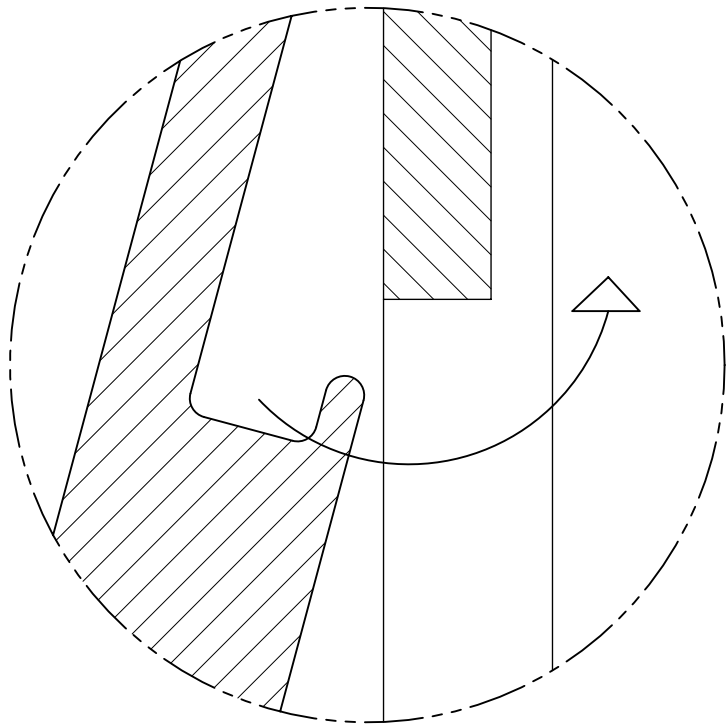
Warranty, Limited Remedy, and Disclaimer: Unless an additional warranty is specifically stated on the applicable 3M product packaging or product literature, 3M warrants that each 3M product meets the applicable 3M product specification at the time 3M ships the product. 3M MAKES NO OTHER WARRANTIES OR CONDITIONS, EXPRESS OR IMPLIED, INCLUDING, BUT NOT LIMITED TO, ANY IMPLIED WARRANTY OR CONDITION OF MERCHANTABILITY OR FITNESS FOR A PARTICULAR PURPOSE OR ANY IMPLIED WARRANTY OR CONDITION ARISING OUT OF A COURSE OF DEALING, CUSTOM OR USAGE OR TRADE. If the 3M product does not conform to this warranty, then the sole and exclusive remedy is, at 3M's option, replacement of the 3M product or refund of the purchase price.

Limitation of Liability: Except where prohibited by law, 3M will not be liable for any loss or damage arising from the 3M product, whether direct, indirect, special, incidental or consequential, regardless of the legal theory asserted, including warranty, contract, negligence or strict liability.

3M Company
Electronics Materials Solutions Division
13011 McCallen Pass, Bldg. C
Austin, TX 78753-5380
1-800-225-5373
www.3M.com/interconnect

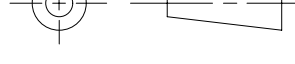


SECTION D - D
SCALE 6x



Detail E
SCALE 20x

TO ASSEMBLE LATCH:
PLACE LIP UNDER OPENING IN END WALL.
PRESS INTO END WALL UNTIL LATCH CLICKS.

DESIGN REFERENCE		NEXT ASSEMBLY		REV	ECO	ISSUE DATE AND DESCRIPTION		DRFT	CHKD
ACCESS CODES				DRFT	CASTIGLIONE	DATE	MFG	DATE	
				CHKD		DATE	APPR	DATE	
							R. SCHERER	SEP 05, 2014	
DIVISION		DIVISION CODE							
Interconnect Solutions		EMSD							
DO NOT SCALE DRAWING		SCALE 6 1		TOLERANCES EXCEPT AS NOTED					
				INCHES					
				.00 ± .01					
				.000 ± .005					
				.0000 ± .0002					
				MILLIMETERS					
THIRD ANGLE PROJECTION				0 ± .3					
				.00 ± .13					
				.000 ± .005					
MAX SURFACE ROUGHNESS		SURFACES							
✓ <input type="checkbox"/> MARKED ONLY									
		ANGLE							

Mouser Electronics

Authorized Distributor

Click to View Pricing, Inventory, Delivery & Lifecycle Information:

3M:

[2540-50Y2UG](#) [N2560-60K2RB](#) [N2510-6002RB-WD](#) [N2514-5002RB-WD](#) [N2524-60K2RB](#) [N2560-5003RB](#) [2540-6002UB](#) [2520-5002UB](#) [2550-5002UB](#) [2526-60K2-UB](#)