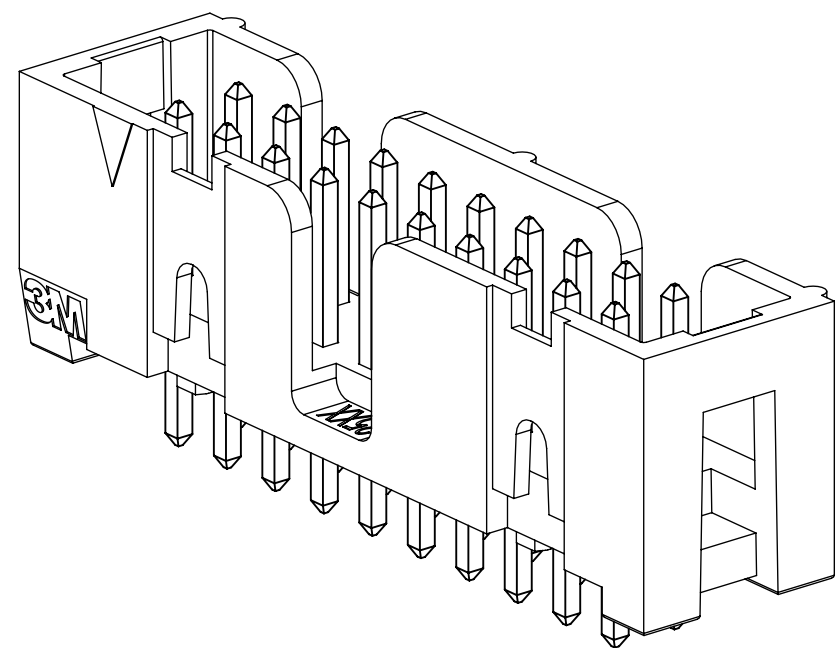
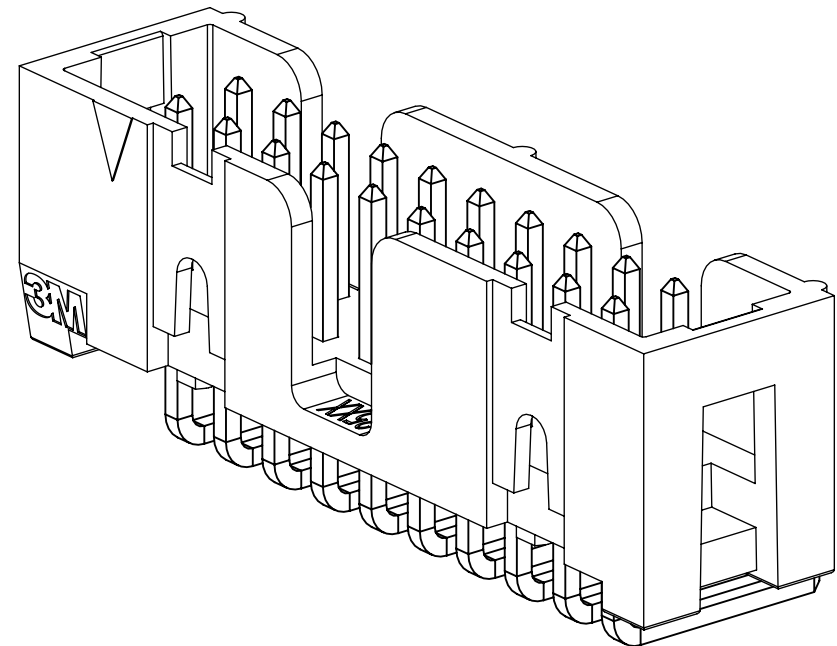


3M™ FOUR-WALL HEADER, 2500 SERIES

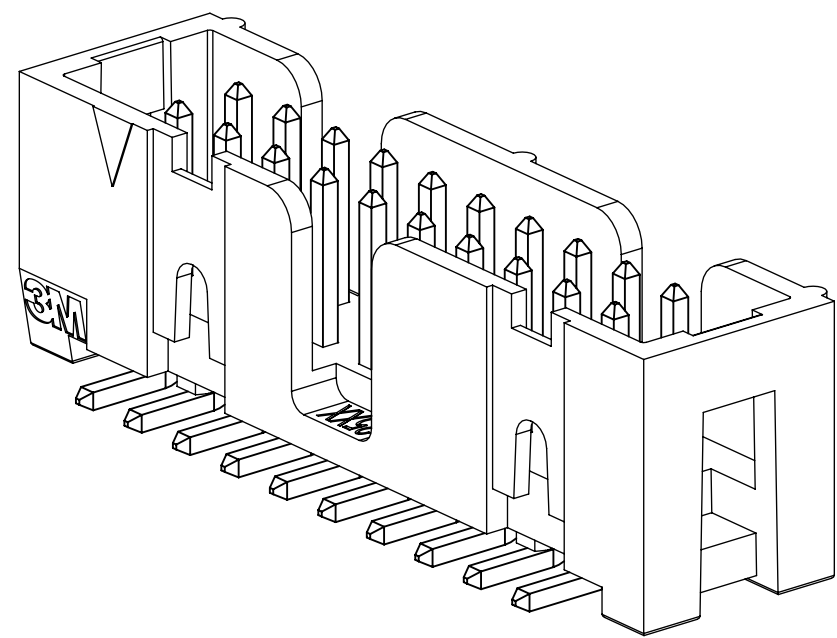
.100" X .100" LOW PROFILE, SURFACE MOUNT, STRAIGHT AND RIGHT ANGLE THROUGH-HOLE



X25XX-60XX
STRAIGHT VERSION



X25XX-50XX
RIGHT ANGLE VERSION



X25XX-6VOC
SURFACE MOUNT VERSION

3M ELECTRONIC MATERIALS SOLUTIONS DIVISION
INTERCONNECT SOLUTIONS
<http://www.3mconnectors.com>

3M IS A TRADEMARK OF 3M COMPANY.
FOR TECHNICAL, SALES OR ORDERING
INFORMATION CALL 800-225-5373

- * LOW PROFILE, SPACE SAVING DESIGN.
- * CENTER SLOT POLARIZATION PREVENTS MIS-INSERTIONS AND REDUCES INSERTION TIME.
- * DUAL SLOT POLARIZATION MEANS BROADER COMPATIBILITY WITH COMPETITIVE POLARIZATION DESIGNS (NOT AVAILABLE ON 6, 8 OR 10 POSITIONS).
- * OPTIONAL RETAINER CLIP FOR LOCKING SOCKETS IN PLACE AND INCREASING CONNECTION RELIABILITY IN VIBRATION-PRONE ENVIRONMENTS.
- * HIGH TEMPERATURE INSULATOR SUITABLE FOR "NO LEAD" SOLDERING OPERATIONS.
- * THROUGH HOLE VERSION SUITABLE FOR REFLOW SOLDERING USING "PASTE IN HOLE" TECHNIQUES.
- * EXPOSED SOLDER TAILS (ON RIGHT ANGLE VERSION) PROVIDE EASE OF CLEANING AND REDUCED REPAIR COST.
- * STRAIGHT SURFACE MOUNT VERSION AVAILABLE.

2 PHYSICAL :

```

INSULATOR:
  MATERIAL: HIGH TEMPERATURE GLASS FILLED POLYESTER (PCT)
FLAMMABILITY: UL94V-0
  COLOR: BLACK
CONTACT:
  MATERIAL: COPPER ALLOY
  PLATING:
UNDER PLATING: NICKEL UNDERPLATE (SEE ORDERING INFORMATION)
  WIPING AREA: GOLD (SEE ORDERING INFORMATION)
  SOLDER TAILS: MATTE TIN (SEE ORDERING INFORMATION)
  MARKINGS: 3M LOGO, PART IDENTIFICATION NUMBER AND ORIENTATION TRIANGLE

```

2 ELECTRICAL :

CURRENT RATING: 5.00A, 1 CONTACT POWERED
3.00A, 6 CONTACTS POWERED
1.75A, ALL CONTACTS POWERED
RATING CONDITIONS: EIA-364-070 METHOD 2, 30°C MAXIMUM
TEMPERATURE RISE, 20% DERATED. REFERENCE APPROPRIATE
3M PRODUCT SPECIFICATION FOR DETAILED CURRENT DERATING
CURVES.
INSULATION RESISTANCE: $>1 \times 10^9 \Omega$ AT 500 V_{DC}
WITHSTANDING VOLTAGE: 1,000V_{RMS} AT SEA LEVEL

2 ENVIRONMENTAL :

TEMPERATURE RATING: -55° C TO 105° C
PROCESS RATING: 260° C, PER J-STD-020C, SINGLE PASS
MOISTURE SENSITIVITY LEVEL: 1 (PER J-STD-020C)

NOTES


1. REGULATORY INFORMATION:
VISIT 3M.com/regs

2 IN THE EVENT OF CONFLICT
BETWEEN THIS DATA AND THAT
CONTAINED IN THE PRODUCT
SPECIFICATION, THE PRODUCT
SPECIFICATION TAKES PRECEDENT.



3 NOTCHES A & C WILL ACCOMODATE
3M POLARIZING KEY: N3518.

4 CONTACT TAILS .0245 [.622] WIRE
WITH .0075 [.191] CORNER RADII
AND .028 [.072] DIAGONAL.

5 SOLDER STANDOFFS FACILITATE
.01 [.3] CLEARANCE ABOVE
BOARD FOR REFLOW SOLDERING.

P	89702	JUL 08, 2020	JNC	SN
N	68908	AUG 02, 2016	JNC	SC
M	56068	AUG 11, 2014	JNC	RS
		REVISED AND REDRAWN		
REV	ECO	ISSUE DATE AND DESCRIPTION	DRFT	CHKD
DRFT	CAS TIGL1ONE	DATE AUG 11, 2014	MFG	DATE
CHKD		DATE R. SCHERER	DATE SEP 05, 2014	
<div style="display: flex; justify-content: space-between;"> <div>  <p>3M Center St. Paul, MN 55144</p> </div> <div> <p>© 3M COPYRIGHT 2020</p> <p>This document and the information it contains are 3M property and may not be reproduced or further distributed without 3M permission, or used or disclosed other than for 3M authorized purposes. All rights reserved.</p> </div> </div>				
TITLE				
HEADER , 4-WALL , LO-PRO , 100 X 100 , SMT , STRAIGHT & RA				
CASE NUMBER	SIZE DRAWING NO. D 78-5100-0770-7			REV . P
MODEL	2500 SERIES		DET. STS <input type="checkbox"/> YES <input checked="" type="checkbox"/> NO	SHT 1 OF 6

DIMENSIONS: INCHES [MM]

DESIGN REFERENCE				NEXT ASSEMBLY		REV		ECO		ISSUE DATE AND DESCRIPTION		DRFT	CHKD
AZURE CODES						DRFT		CASTIGLIONE		AUG 11, 2014		DATE	
						CHKD				DATE		DATE	SEP 05, 2014
DIVISION				DIVISION CODE				© 3M COPYRIGHT 2020 This document and the information it contains are 3M property and may not be reproduced or further distributed without 3M permission, or used or disclosed other than for 3M authorized purposes. All rights reserved.					
Interconnect Solutions				EMSD				 3M Center St. Paul, MN 55144					
DO NOT SCALE DRAWING		SCALE $\frac{4}{1}$		TOLERANCES EXCEPT AS NOTED				TITLE HEADER, 4-WALL, LO-PRO, .100 X .100, SMT, STRAIGHT & RA					
 THIRD ANGLE PROJECTION		INCHES .00 ± .01 .00 ± .01 .000 ± .005 .0000 ± .0002		MILLIMETERS .0 ± .2 .0 ± .3 .00 ± .13 .000 ± .005				CAGE NUMBER SIZE DRAWING NO. D 78-5100-0770-7					
MAX SURFACE ROUGHNESS <input checked="" type="checkbox"/> FLAT SURFACES <input checked="" type="checkbox"/> MARKED ONLY				ANGLES				MODEL 2500 SERIES					
								DET. LISTS <input checked="" type="checkbox"/> YES <input checked="" type="checkbox"/> NO SHT 1 OF 6					

UL[®]
US
UL FILE NO: E68080

78-5100-0770-7
DRAWING NUMBER
REVISION

3M™ FOUR-WALL HEADER, 2500 SERIES
.100" X .100" LOW PROFILE, SURFACE MOUNT, STRAIGHT AND RIGHT ANGLE THROUGH-HOLE

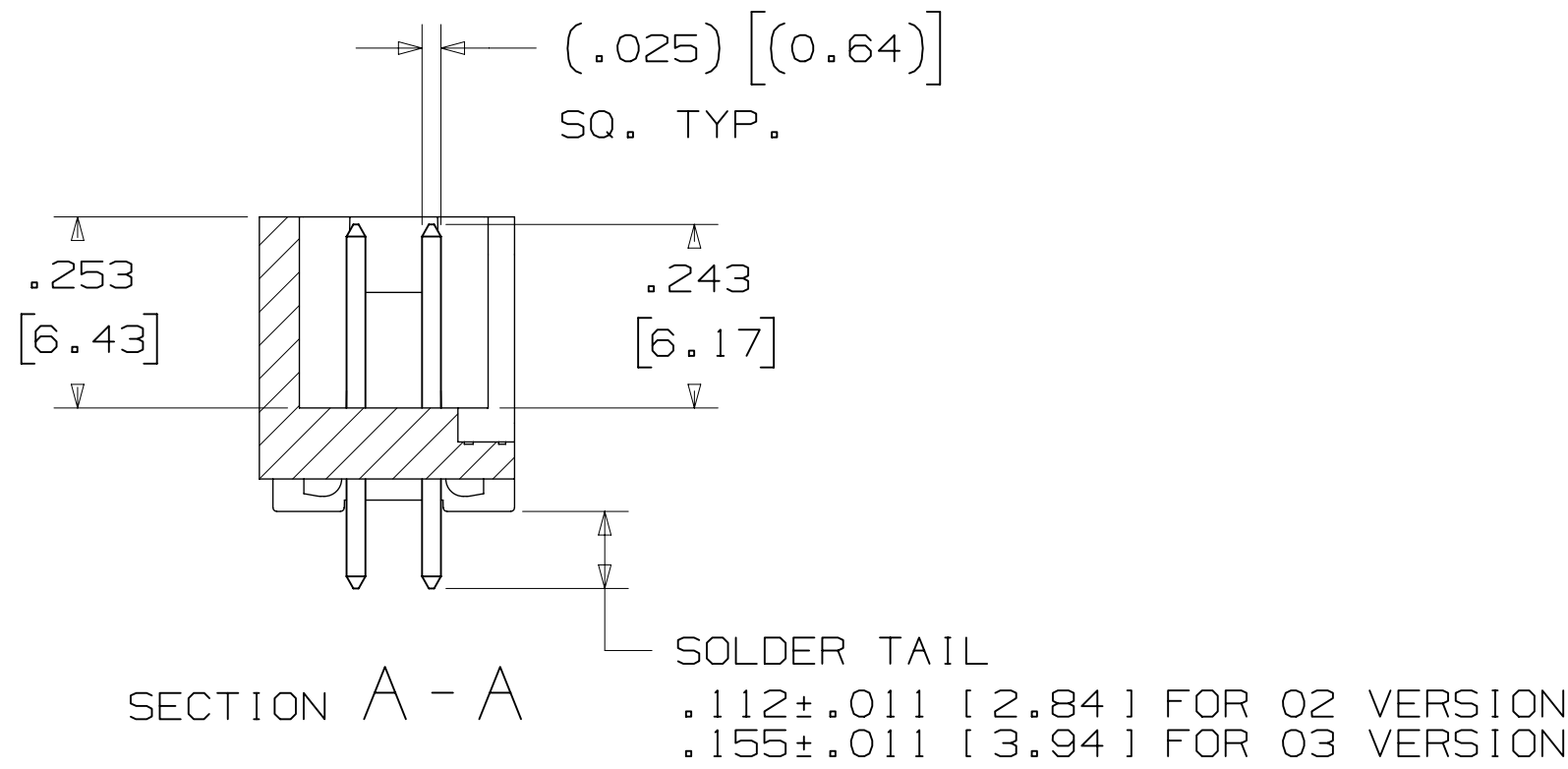
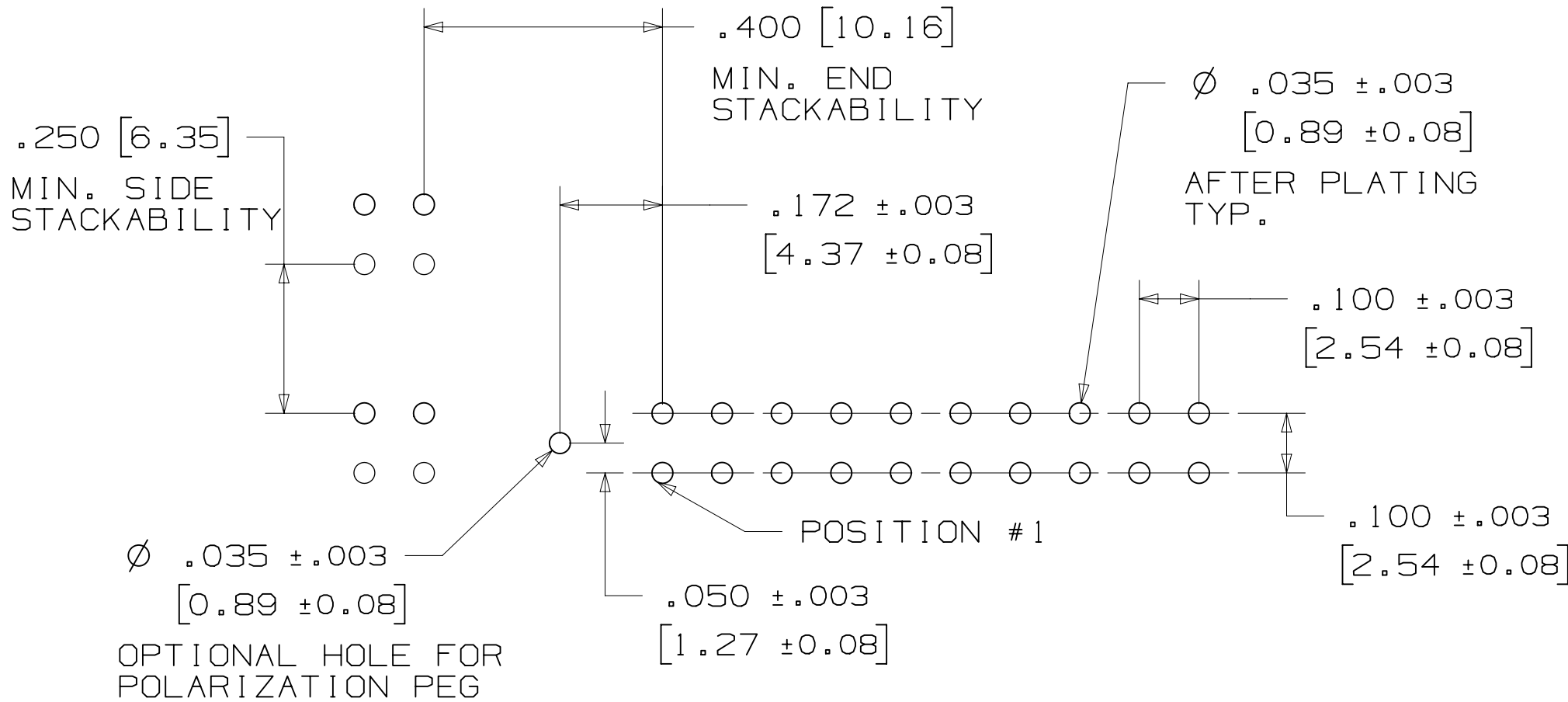
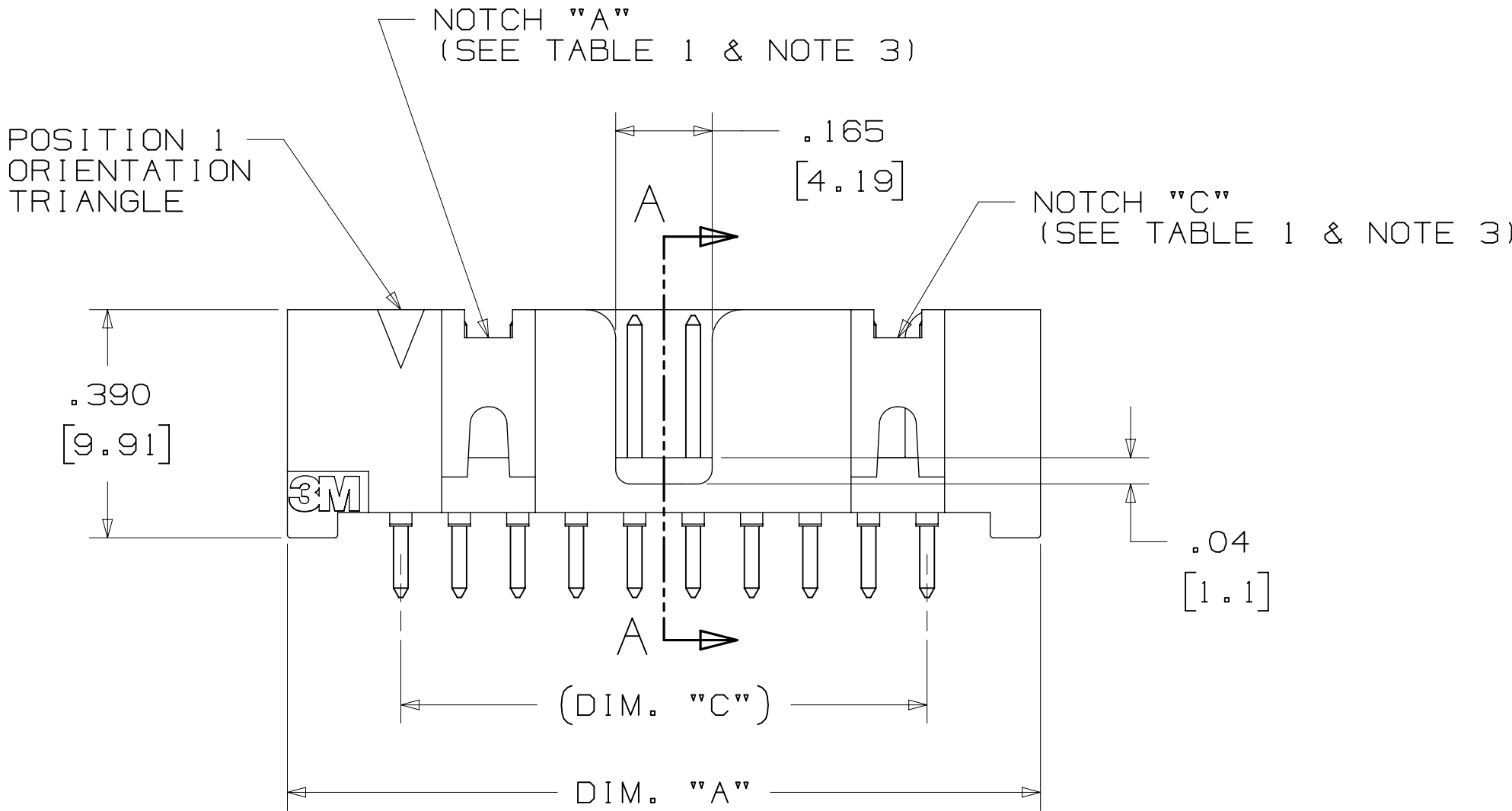
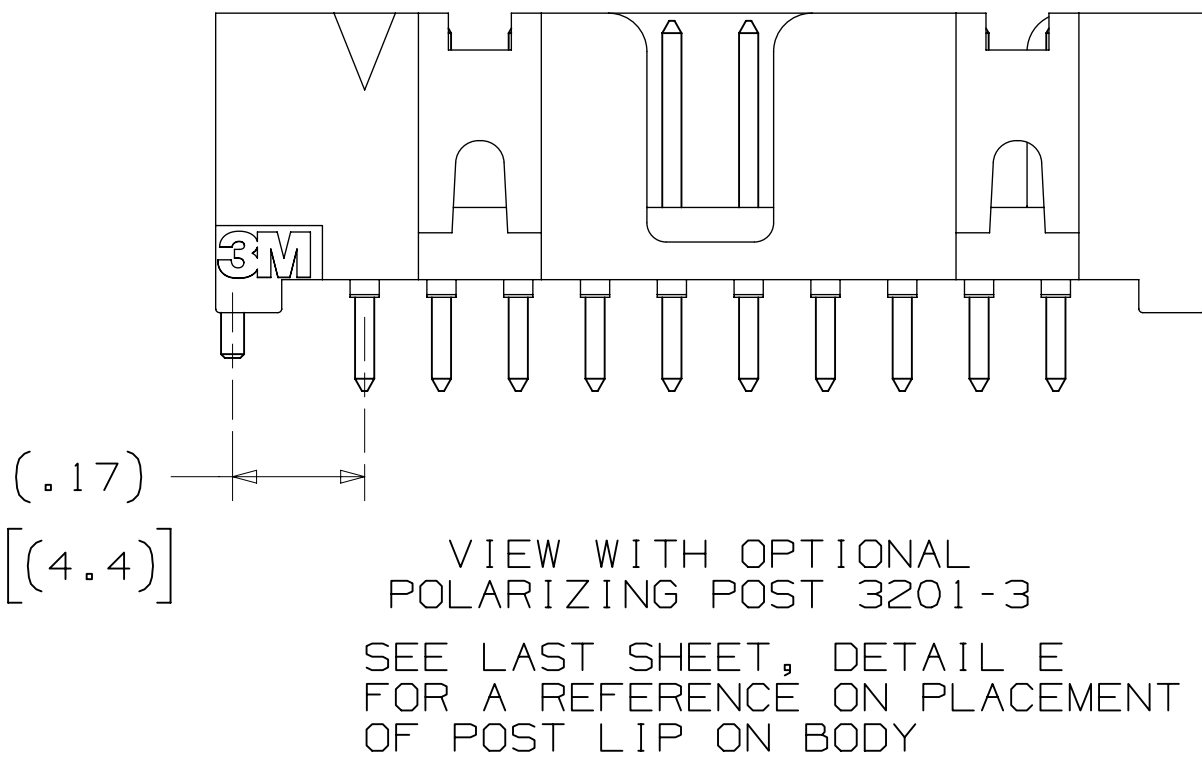
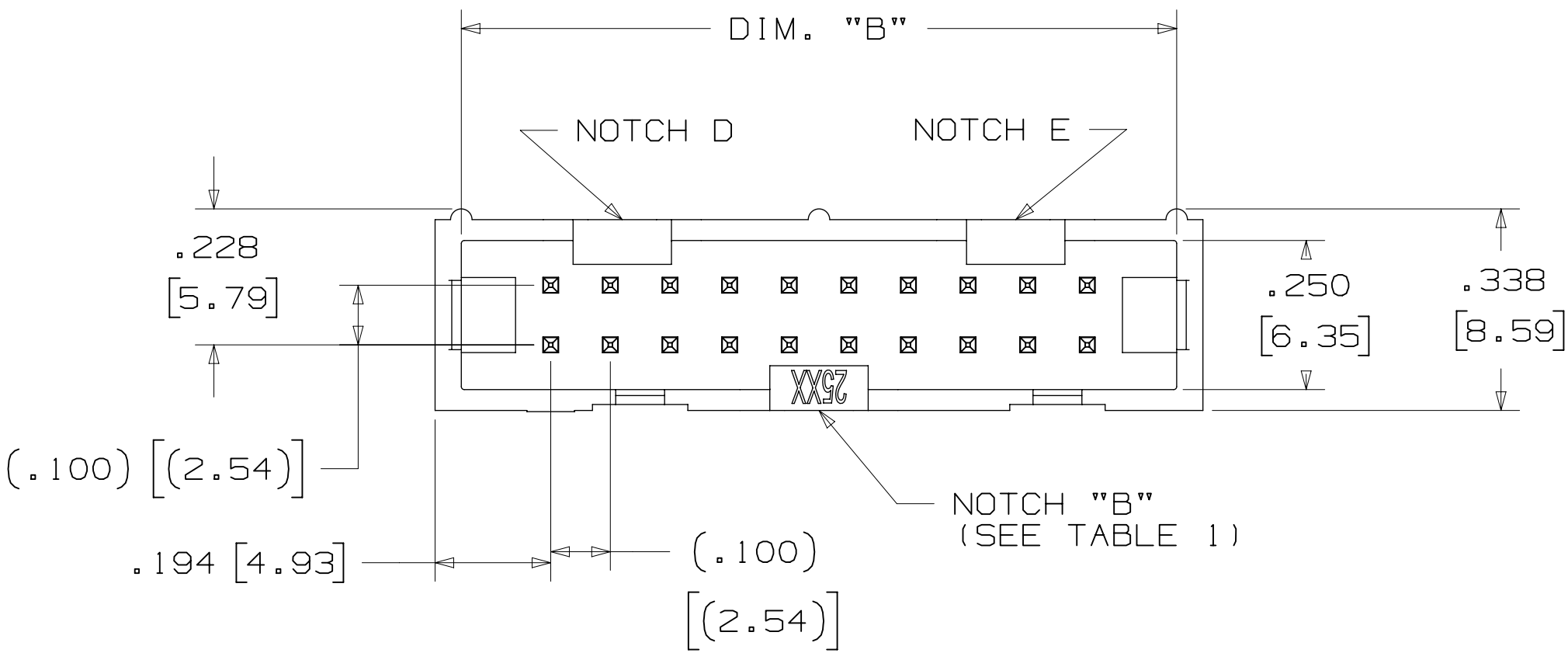


TABLE 1					
PIN QTY.	DIM. "A"	DIM. "B"	DIM. "C"	POLARIZING NOTCHES	PIN QTY.
06	.588 [14.94]	.508 [12.90]	.200 [5.08]	B	06
08	.688 [17.48]	.608 [15.44]	.300 [7.62]	B	08
10	.788 [20.02]	.708 [17.98]	.400 [10.16]	BC	10
14	.988 [25.10]	.908 [23.06]	.600 [15.24]	BCDE	14
16	1.088 [27.64]	1.008 [25.60]	.700 [17.78]	ABCDE	16
20	1.288 [32.72]	1.208 [30.68]	.900 [22.86]	ABCDE	20
24	1.488 [37.80]	1.408 [35.76]	1.100 [27.94]	ABCDE	24
26	1.588 [40.34]	1.508 [38.30]	1.200 [30.48]	ABCDE	26
30	1.788 [45.42]	1.708 [43.38]	1.400 [35.56]	ABCDE	30
34	1.988 [50.50]	1.908 [48.46]	1.600 [40.64]	ABCDE	34
36	2.088 [53.04]	2.008 [51.00]	1.700 [43.18]	ABCDE	36
40	2.288 [58.12]	2.208 [56.08]	1.900 [48.26]	ABCDE	40
50	2.788 [70.82]	2.708 [68.78]	2.400 [60.96]	ABCDE	50
60	3.288 [83.52]	3.208 [81.48]	2.900 [73.66]	ABCDE	60
64	3.488 [88.60]	3.408 [86.56]	3.100 [78.74]	ABCDE	64



ORDERING INFORMATION
STRAIGHT VERSION

X25XX-60XX-XX

N = RB PLATING REQ'D
D = AR PLATING REQ'D (02 SOLDER TAIL ONLY)
PIN QUANTITY: (SEE TABLE 1)
SOLDER TAIL:
02 = FOR .062 [1.57] THICK BOARD
03 = FOR .094 TO .125 [2.39 TO 3.18] THICK BOARD (SOLDER TAIL LENGTH ONLY AVAILABLE ON N25XX-60XX-RB)

PLATING:
AR = 10μ" [0.25μm] GOLD AVG.
50μ-150μ [1.27μm-3.81μm] NICKEL UNDERPLATE
40μ-120μ [1.02μm-3.05μm] MATTE TIN (RIA, E1 & C1 APPLY)
RB = 30μ" [0.76μm] GOLD AVG.
50μ-150μ [1.27μm-3.81μm] NICKEL UNDERPLATE
25μ-200μ [0.63μm-5.08μm] MATTE TIN (RIA, E1 & C1 APPLY)

RECOMMENDED HOLE PATTERN
SHOWN FROM COMPONENT SIDE

DESIGN REFERENCE		NEXT ASSEMBLY		REV	ECO	ISSUE DATE AND DESCRIPTION		DRFT	CHKD
X25XX-60XX-XX		X25XX-60XX-XX		REV	ECO	ISSUE DATE AND DESCRIPTION		DRFT	CHKD
DIVISION		DIVISION CODE		DATE		DATE		DATE	
Interconnect Solutions		EMSD		AUG 11, 2014		AUG 11, 2014		SEP 05, 2014	
DO NOT SCALE DRAWING		SCALE 4/1		TOLERANCES EXCEPT AS NOTED		INCHES .00 ±.01 .000 ±.005 .0000 ±.0002		MILLIMETERS 0 ±.2 .00 ±.13 .000 ±.005	
THIRD ANGLE PROJECTION		INTERPRET PER ASME Y14.5 - 2018		MAX SURFACE ROUGHNESS		DET SURFACES		MARKED ONLY	
CAGE NUMBER		DRAWING NO.		MODEL		2500 SERIES		REV.	
D78-5100-0770-7		P		SHT 2 OF 6		DET		YES NO	

3M™ FOUR-WALL HEADER, 2500 SERIES
.100" X .100" LOW PROFILE, SURFACE MOUNT, STRAIGHT AND RIGHT ANGLE THROUGH-HOLE

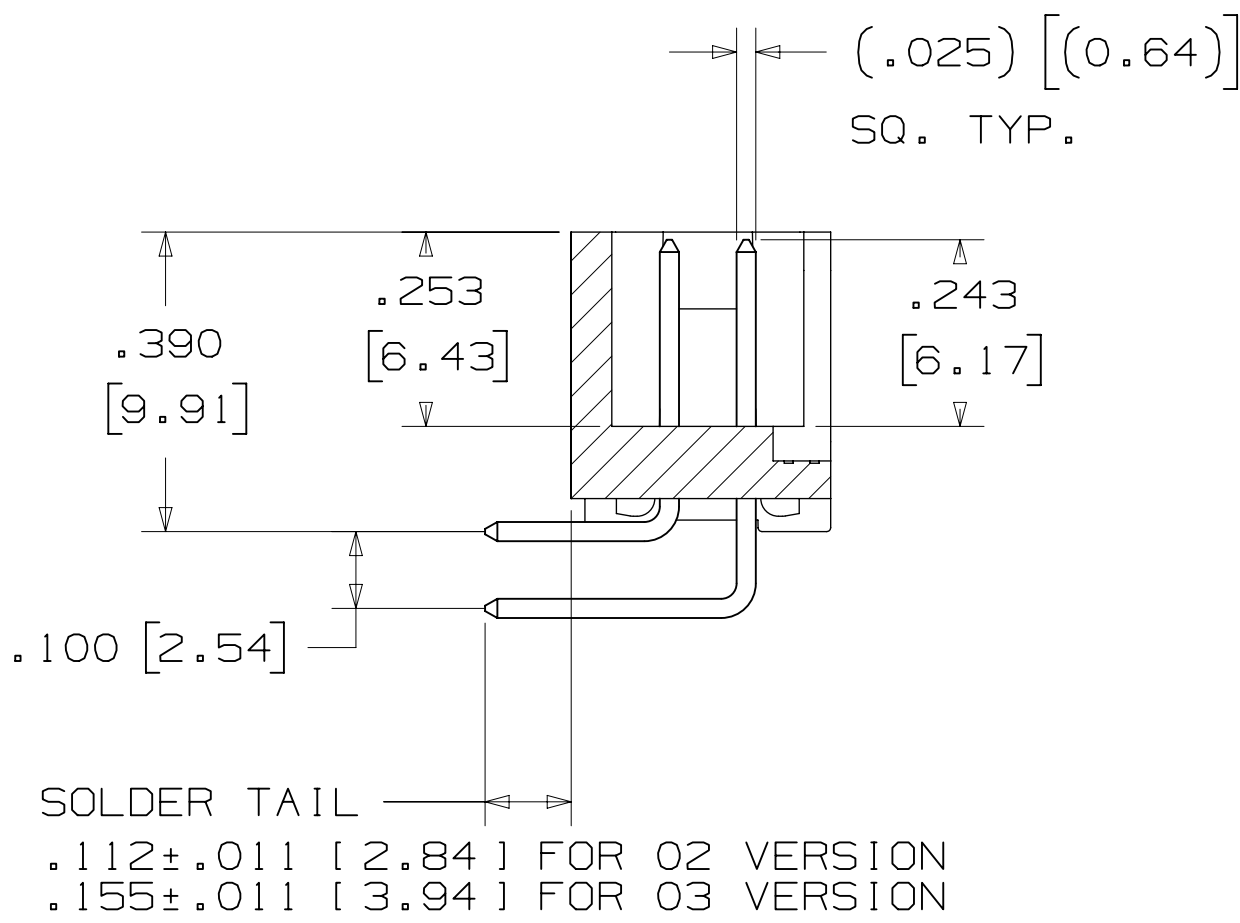


TABLE 1					
PIN QTY.	DIM. "A"	DIM. "B"	DIM. "C"	POLARIZING NOTCHES	PIN QTY.
06	.588 [14.94]	.508 [12.90]	.200 [5.08]	B	06
08	.688 [17.48]	.608 [15.44]	.300 [7.62]	B	08
10	.788 [20.02]	.708 [17.98]	.400 [10.16]	BC	10
14	.988 [25.10]	.908 [23.06]	.600 [15.24]	BCDE	14
16	1.088 [27.64]	1.008 [25.60]	.700 [17.78]	ABCDE	16
20	1.288 [32.72]	1.208 [30.68]	.900 [22.86]	ABCDE	20
24	1.488 [37.80]	1.408 [35.76]	1.100 [27.94]	ABCDE	24
26	1.588 [40.34]	1.508 [38.30]	1.200 [30.48]	ABCDE	26
30	1.788 [45.42]	1.708 [43.38]	1.400 [35.56]	ABCDE	30
34	1.988 [50.50]	1.908 [48.46]	1.600 [40.64]	ABCDE	34
36	2.088 [53.04]	2.008 [51.00]	1.700 [43.18]	ABCDE	36
40	2.288 [58.12]	2.208 [56.08]	1.900 [48.26]	ABCDE	40
50	2.788 [70.82]	2.708 [68.78]	2.400 [60.96]	ABCDE	50
60	3.288 [83.52]	3.208 [81.48]	2.900 [73.66]	ABCDE	60
64	3.488 [88.60]	3.408 [86.56]	3.100 [78.74]	ABCDE	64

ORDERING INFORMATION
RIGHT ANGLE VERSION

X25XX-50XX-XX

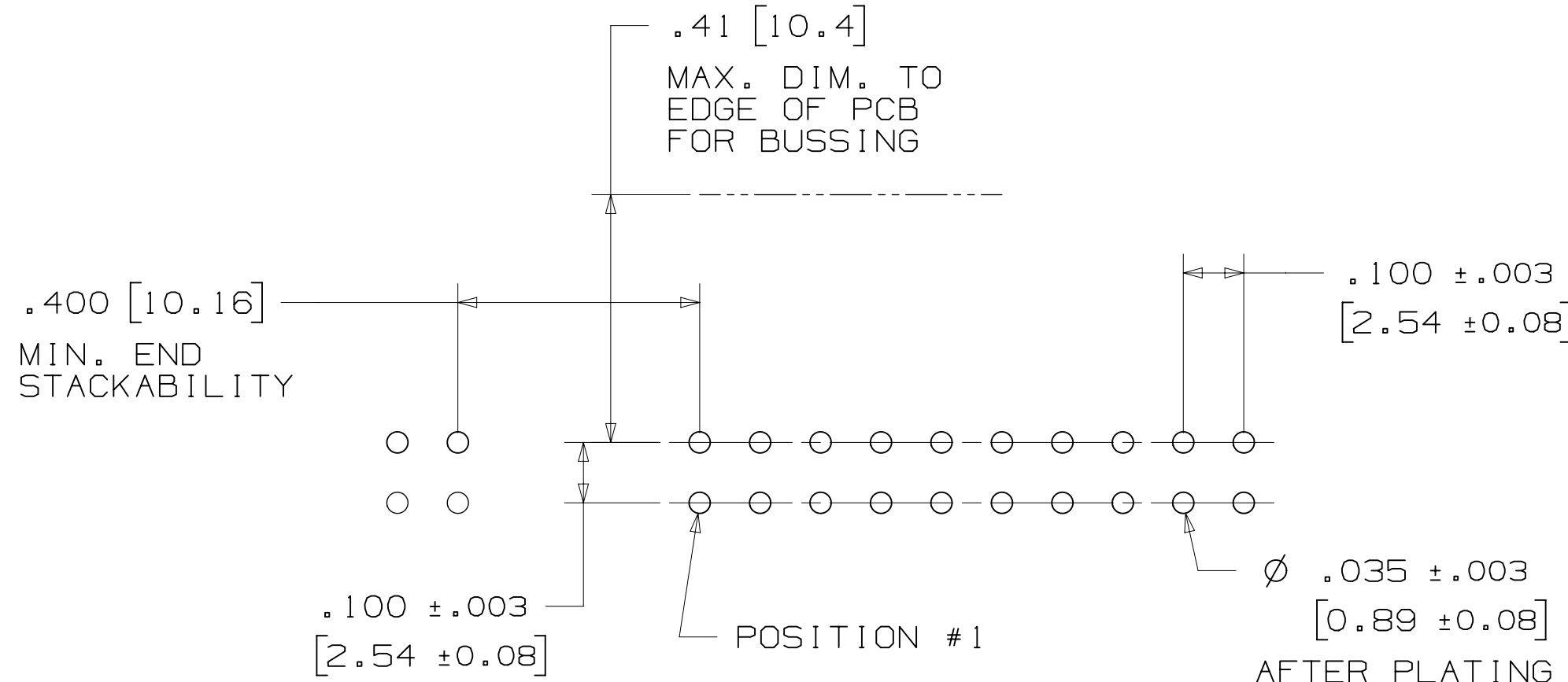
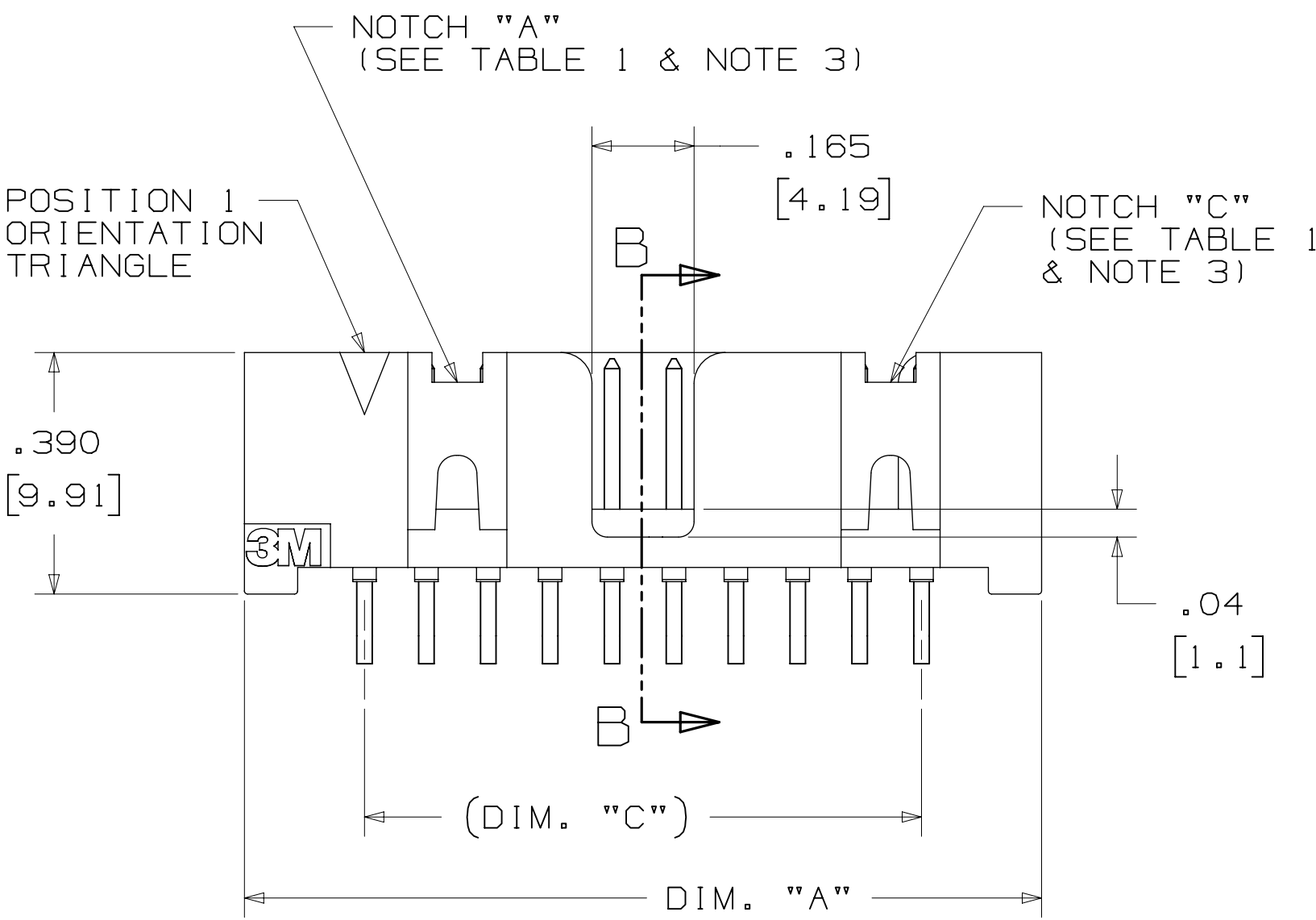
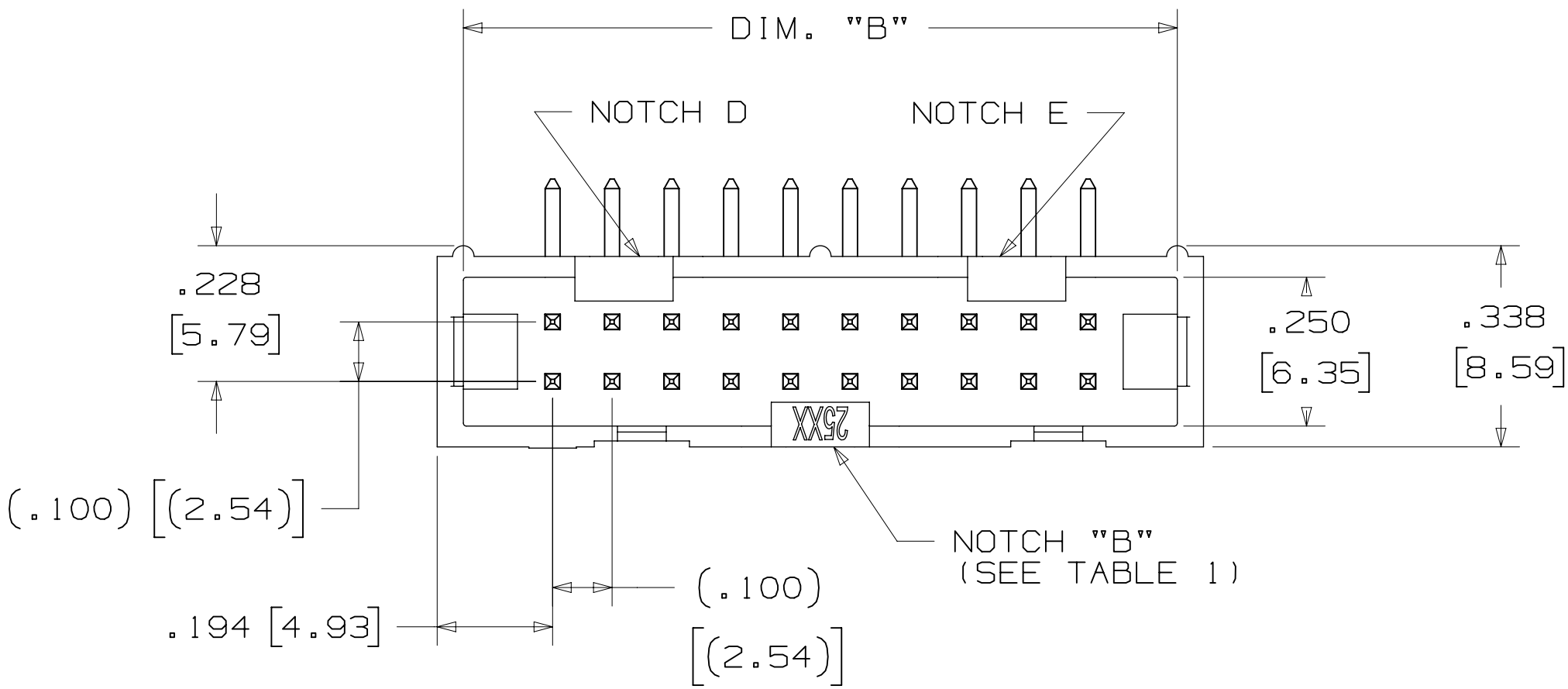
N = RB PLATING REQ'D
D = AR PLATING REQ'D (02 SOLDER TAIL ONLY)

PIN QUANTITY: (SEE TABLE 1)

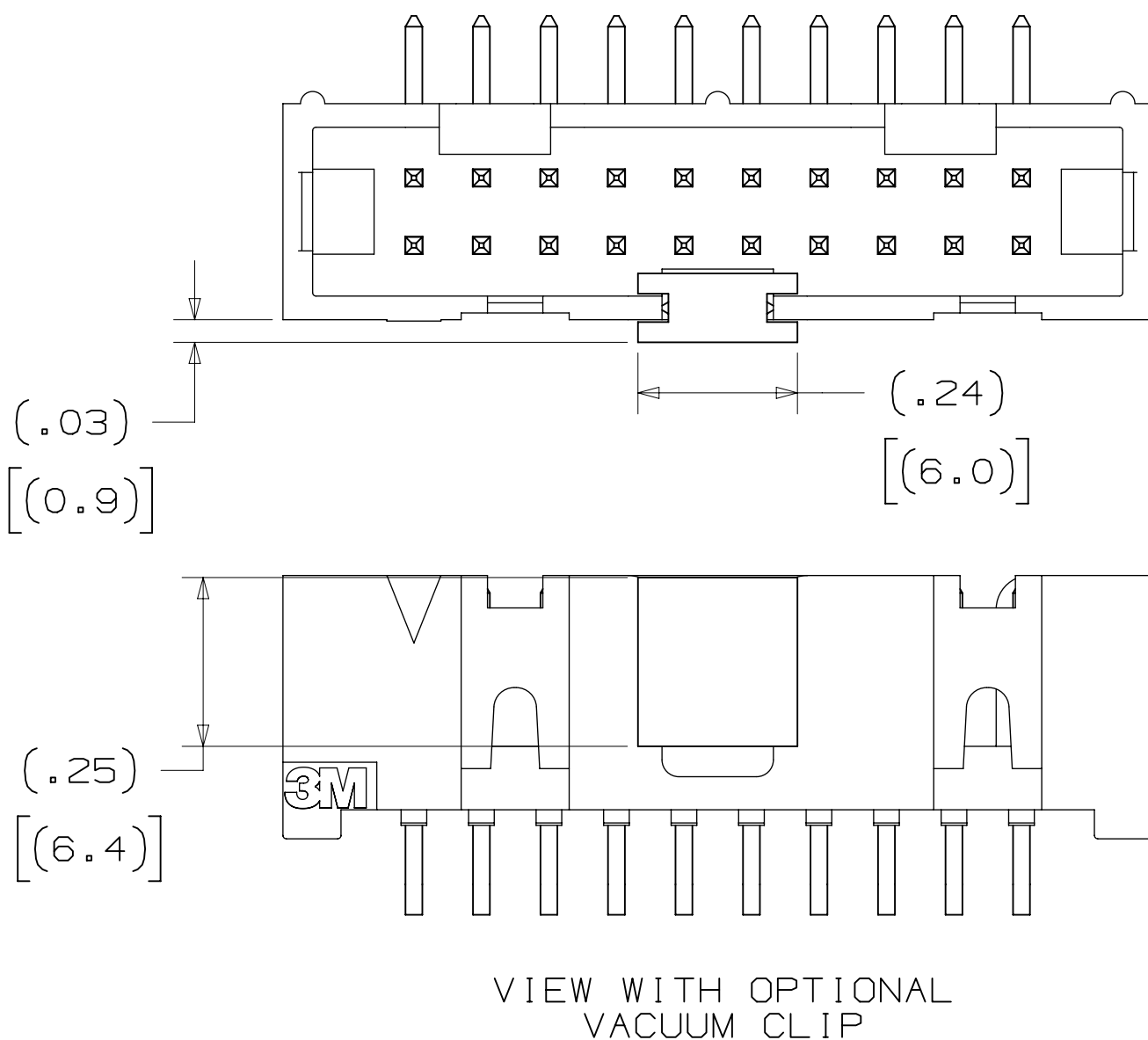
SOLDER TAIL:
02 = FOR .062 [1.57] THICK BOARD
03 = FOR .094 TO .125 [2.39 TO 3.18] THICK BOARD (SOLDER TAIL LENGTH ONLY AVAILABLE ON N25XX-50XX-RB)

PLATING:
AR = 10μ" [0.25μm] GOLD AVG.
50μ-150μ [1.27μm-3.81μm] NICKEL UNDERPLATE
40μ-120μ [1.02μm-3.05μm] MATTE TIN (RIA, E1 & C1 APPLY)

RB = 30μ" [0.76μm] GOLD AVG.
50μ-150μ [1.27μm-3.81μm] NICKEL UNDERPLATE
25μ-200μ [0.63μm-5.08μm] MATTE TIN (RIA, E1 & C1 APPLY)



RECOMMENDED HOLE PATTERN
SHOWN FROM COMPONENT SIDE



DESIGN REFERENCE		NEXT ASSEMBLY		REV	ECO	ISSUE DATE AND DESCRIPTION		DRFT	CHKD
X25XX-50XX-XX		X25XX-50XX-XX		REV	ECO	ISSUE DATE AND DESCRIPTION		DRFT	CHKD
DIVISION		DIVISION CODE		REV	ECO	ISSUE DATE AND DESCRIPTION		DRFT	CHKD
Interconnect Solutions		EMSD		REV	ECO	ISSUE DATE AND DESCRIPTION		DRFT	CHKD
DO NOT SCALE DRAWING		SCALE 4/1		REV	ECO	ISSUE DATE AND DESCRIPTION		DRFT	CHKD
THIRD ANGLE PROJECTION		TOLERANCES EXCEPT AS NOTED		REV	ECO	ISSUE DATE AND DESCRIPTION		DRFT	CHKD
INTERPRET PER ASME Y14.5 - 2018		TOLERANCES EXCEPT AS NOTED		REV	ECO	ISSUE DATE AND DESCRIPTION		DRFT	CHKD
MAX SURFACE ROUGHNESS		TOLERANCES EXCEPT AS NOTED		REV	ECO	ISSUE DATE AND DESCRIPTION		DRFT	CHKD
SURFACES		TOLERANCES EXCEPT AS NOTED		REV	ECO	ISSUE DATE AND DESCRIPTION		DRFT	CHKD
MARKED ONLY		TOLERANCES EXCEPT AS NOTED		REV	ECO	ISSUE DATE AND DESCRIPTION		DRFT	CHKD
TITLE		CAGE NUMBER		REV	ECO	ISSUE DATE AND DESCRIPTION		DRFT	CHKD
HEADER, 4-WALL, LO-PRO, .100 X .100, SMT, STRAIGHT & RA		D78-5100-0770-7		REV	ECO	ISSUE DATE AND DESCRIPTION		DRFT	CHKD
MODEL		2500 SERIES		REV	ECO	ISSUE DATE AND DESCRIPTION		DRFT	CHKD
LISTS		YES		REV	ECO	ISSUE DATE AND DESCRIPTION		DRFT	CHKD
SHT 3 OF 6				REV	ECO	ISSUE DATE AND DESCRIPTION		DRFT	CHKD

3M™ FOUR-WALL HEADER, 2500 SERIES
.100" X .100" LOW PROFILE, SURFACE MOUNT, STRAIGHT AND RIGHT ANGLE THROUGH-HOLE

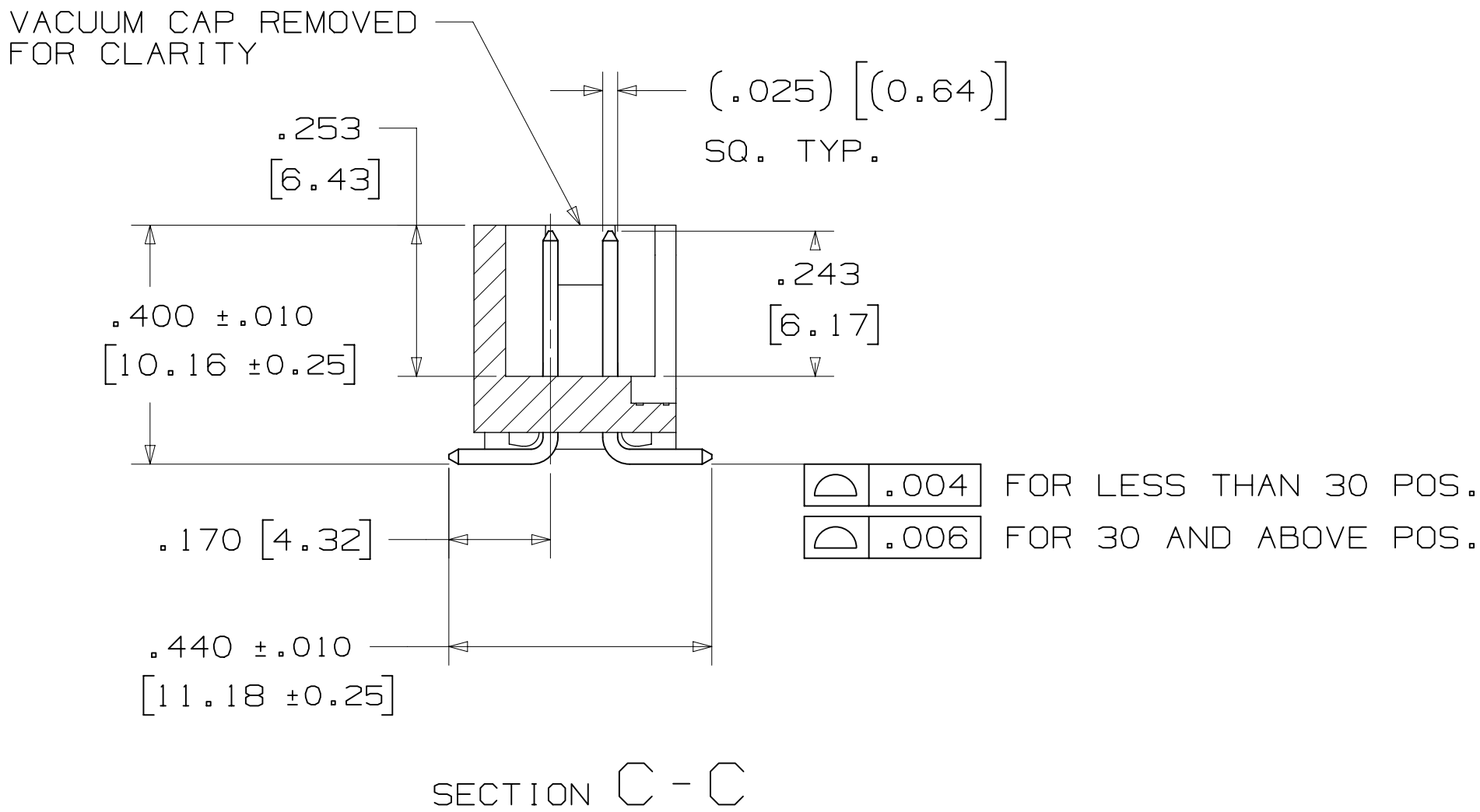


TABLE 1						
PIN QTY.	DIM. "A"	DIM. "B"	DIM. "C"	POLARIZING NOTCHES	TAPE AND REEL PKG CODE	PIN QTY.
06	.588 [14.94]	.508 [12.90]	.200 [5.08]	B	WD (44 MM)	06
08	.688 [17.48]	.608 [15.44]	.300 [7.62]	B	WD (44 MM)	08
10	.788 [20.02]	.708 [17.98]	.400 [10.16]	BC	WD (44 MM)	10
14	.988 [25.10]	.908 [23.06]	.600 [15.24]	BCDE	WD (44 MM)	14
16	1.088 [27.64]	1.008 [25.60]	.700 [17.78]	ABCDE	WD (44 MM)	16
20	1.288 [32.72]	1.208 [30.68]	.900 [22.86]	ABCDE	WE (56 MM)	20
24	1.488 [37.80]	1.408 [35.76]	1.100 [27.94]	ABCDE	WE (56 MM)	24
26	1.588 [40.34]	1.508 [38.30]	1.200 [30.48]	ABCDE	WE (56 MM)	26
30	1.788 [45.42]	1.708 [43.38]	1.400 [35.56]	ABCDE	WF (72 MM)	30
34	1.988 [50.50]	1.908 [48.46]	1.600 [40.64]	ABCDE	WF (72 MM)	34
36	2.088 [53.04]	2.008 [51.00]	1.700 [43.18]	ABCDE	WG (88 MM)	36
40	2.288 [58.12]	2.208 [56.08]	1.900 [48.26]	ABCDE	WG (88 MM)	40
50	2.788 [70.82]	2.708 [68.78]	2.400 [60.96]	ABCDE	WG (88 MM)	50
60	3.288 [83.52]	3.208 [81.48]	2.900 [73.66]	ABCDE	WH (120 MM)	60
64	3.488 [88.60]	3.408 [86.56]	3.100 [78.74]	ABCDE	WH (120 MM)	64

ORDERING INFORMATION
SURFACE MOUNT VERSION
X25XX-6VOC-XX-XX

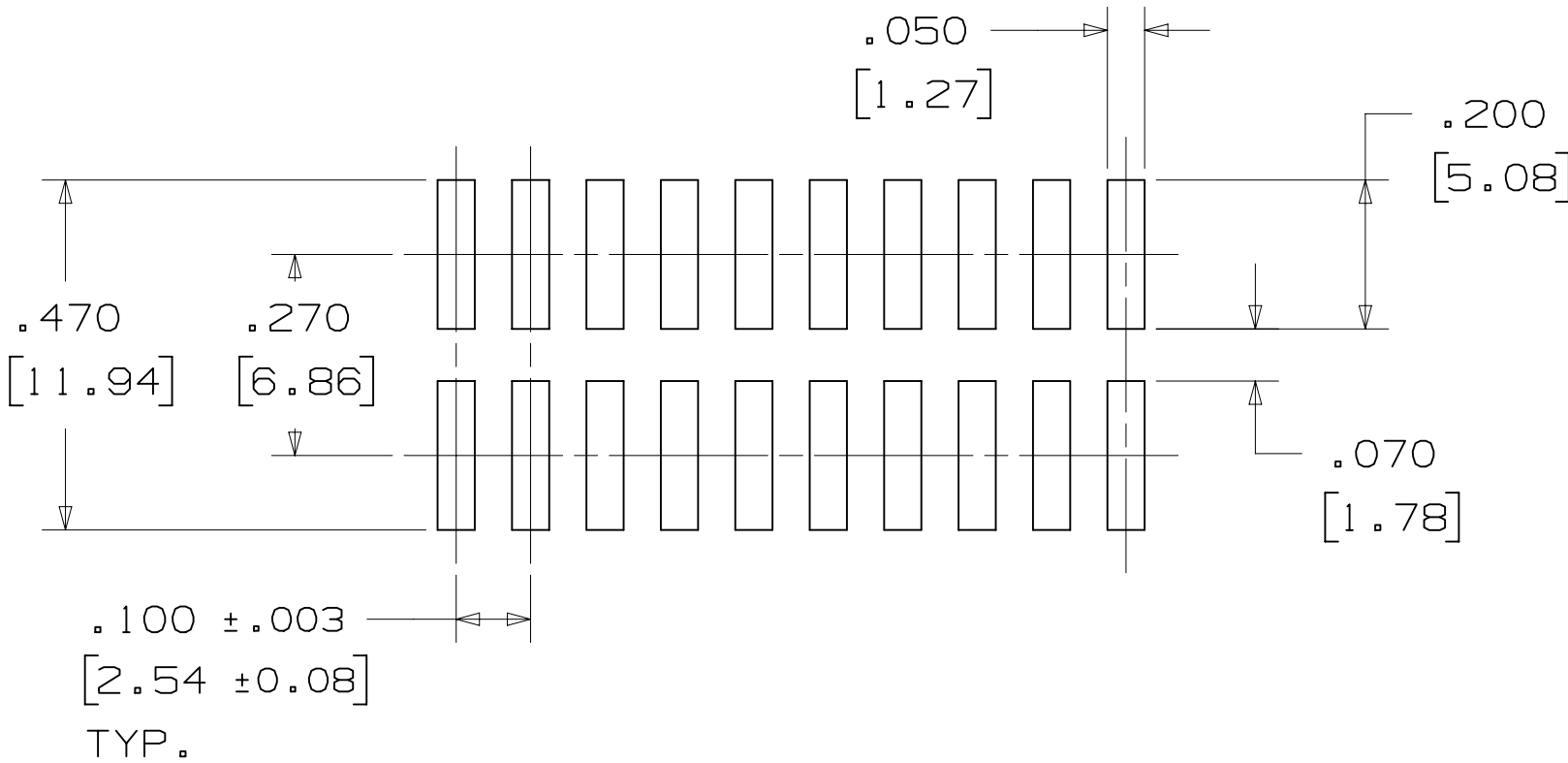
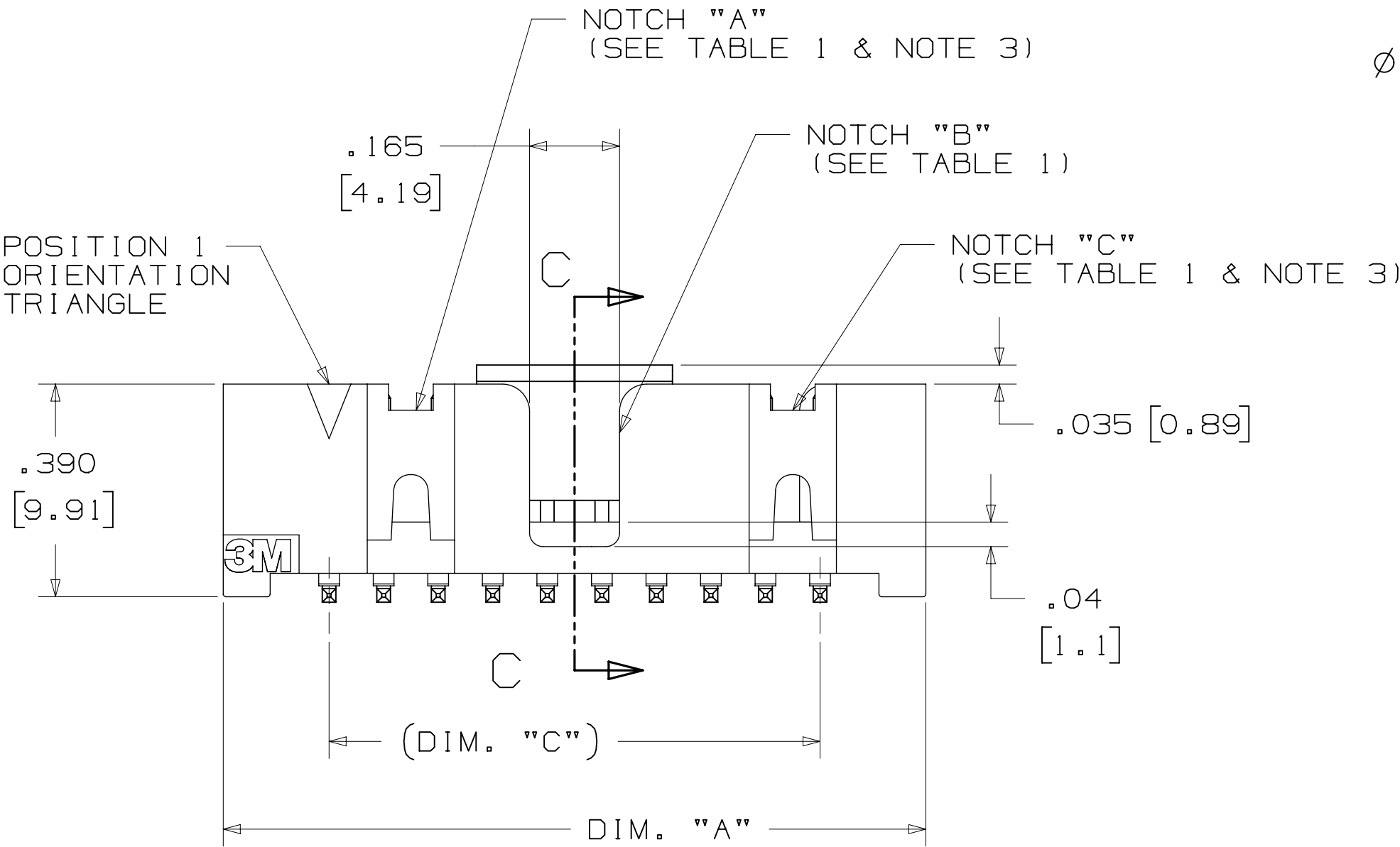
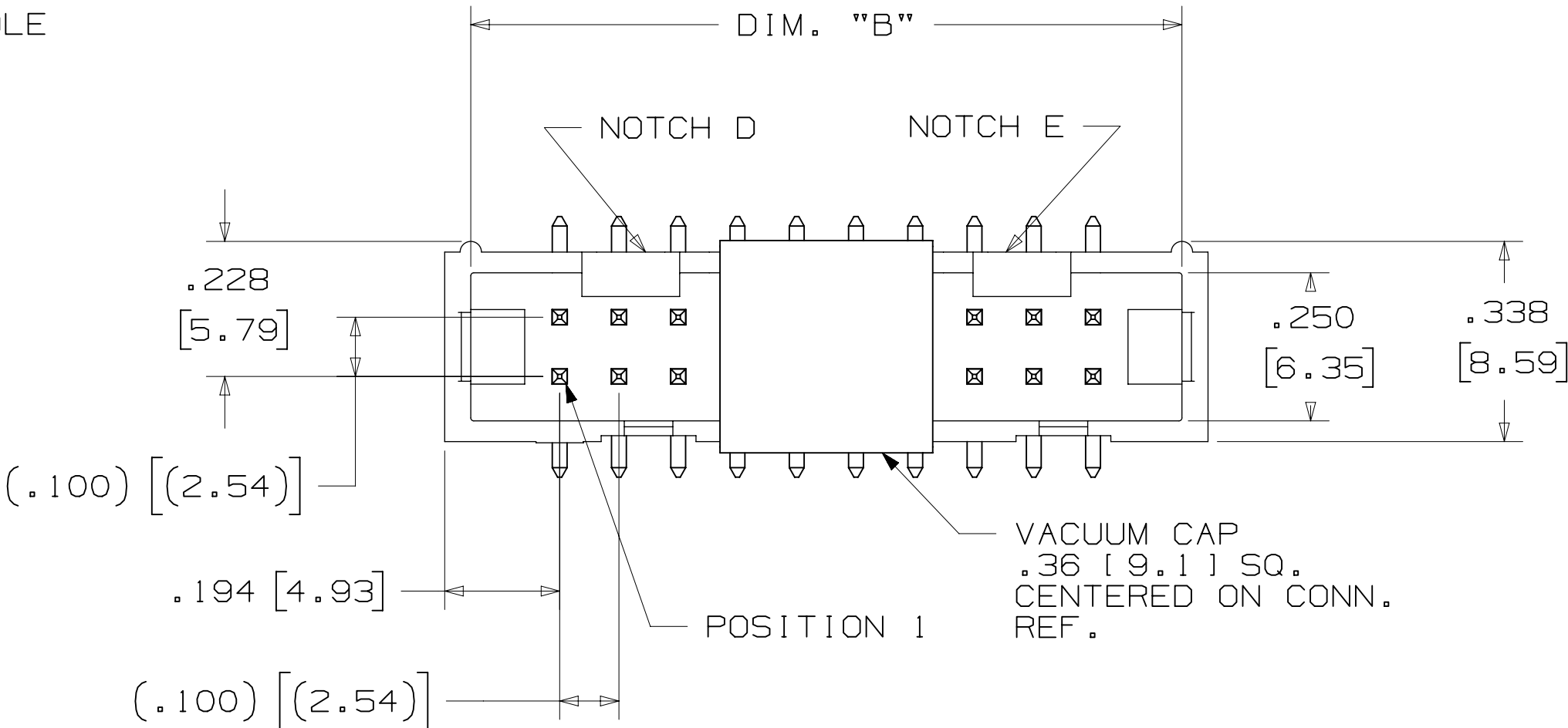
N = RB PLATING REQ'D
D = AR PLATING REQ'D

PIN QUANTITY:
(SEE TABLE 1)

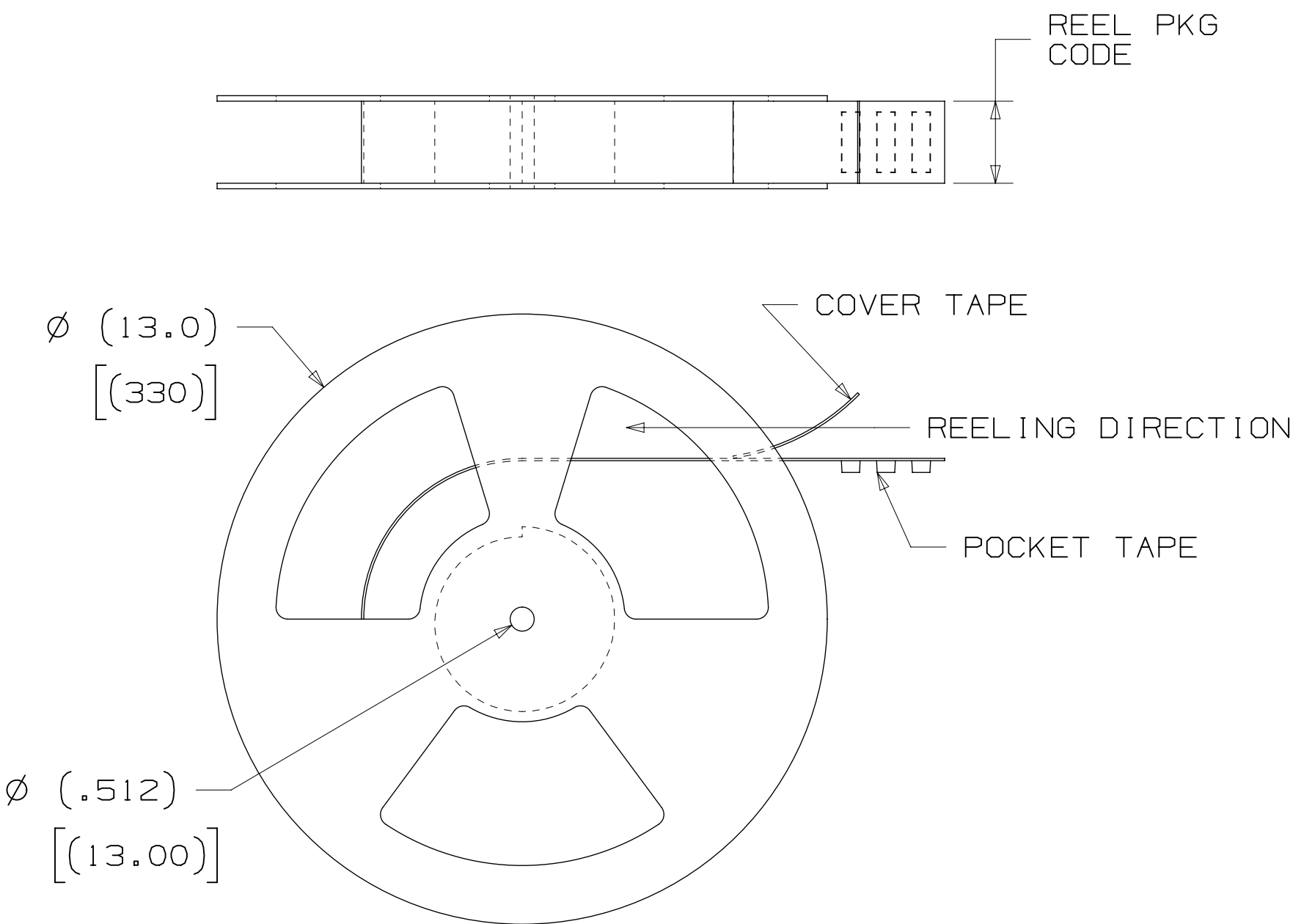
PACKAGING OPTIONS:
WX = TAPE & REEL PACKAGING (SEE TABLE 1)

PLATING:
AR = 10µ" [0.25µm] GOLD AVG.
50µ-150µ [1.27µm-3.81µm] NICKEL UNDERPLATE
40µ-120µ" [1.02µm-3.05µm] MATTE TIN (RIA. E1 & C1 APPLY)

RB = 30µ" [0.76µm] GOLD AVG.
50µ-150µ [1.27µm-3.81µm] NICKEL UNDERPLATE
25µ-200µ" [0.63µm-5.08µm] MATTE TIN (RIA. E1 & C1 APPLY)



RECOMMENDED PAD LAYOUT



DESIGN REFERENCE		NEXT ASSEMBLY		REV	ECO	ISSUE DATE AND DESCRIPTION		DRFT	CHKD
X25XX-6VOC-XX-XX				ECO	ECO	AUG 11, 2014			
DIVISION		DIVISION CODE		CHKD	CHKD	DATE		DATE	DATE
Interconnect Solutions		EMSD		CHKD	CHKD	AUG 11, 2014		SEP 05, 2014	
DO NOT SCALE DRAWING		SCALE 4/1		TOLERANCES EXCEPT AS NOTED		INCHES .00 ±.01 .000 ±.0005 .0000 ±.0002		MILLIMETERS 0 ±.2 .00 ±.13 .000 ±.005	
THIRD ANGLE PROJECTION		INTERPRET PER ASME Y14.5 - 2018		MAX SURFACE ROUGHNESS		SURFACES MARKED ONLY		ANGLES	
TITLE		HEADER, 4-WALL, LO-PRO, .100 X .100, SMT, STRAIGHT & RA		CAGE NUMBER		DRAWING NO. D78-5100-0770-7		REV. P	
MODEL		2500 SERIES		LISTS		YES NO		SHT 4 OF 6	

3M™ FOUR-WALL HEADER, 2500 SERIES
.100" X .100" LOW PROFILE, SURFACE MOUNT, STRAIGHT AND RIGHT ANGLE THROUGH-HOLE

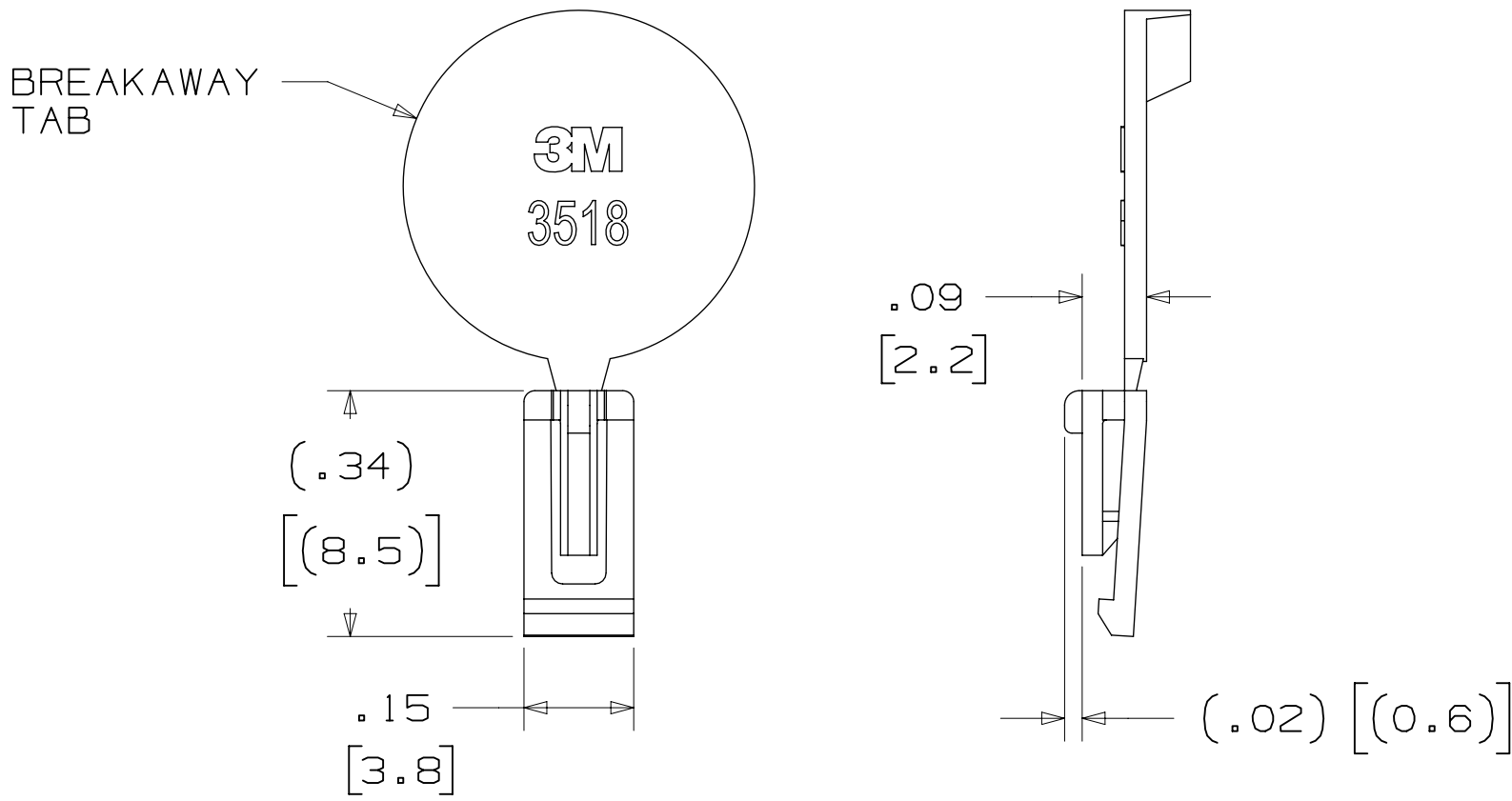
PART CUSTOMIZATION

THIS SPEC SHEET DETAILS OUR STANDARD OFFERING.

3M HAS SEVERAL CAPABILITIES THAT CAN PROVIDE A PART TAILORED TO YOUR SPECIFIC NEEDS. ASK YOUR 3M SALES REPRESENTATIVE OR CUSTOMER SERVICE FOR MORE DETAILS.

- * SELECTIVE PIN REMOVAL (FOR BOARD ASSEMBLY POLARIZATION).
- * DIFFERENT PIN LENGTHS.

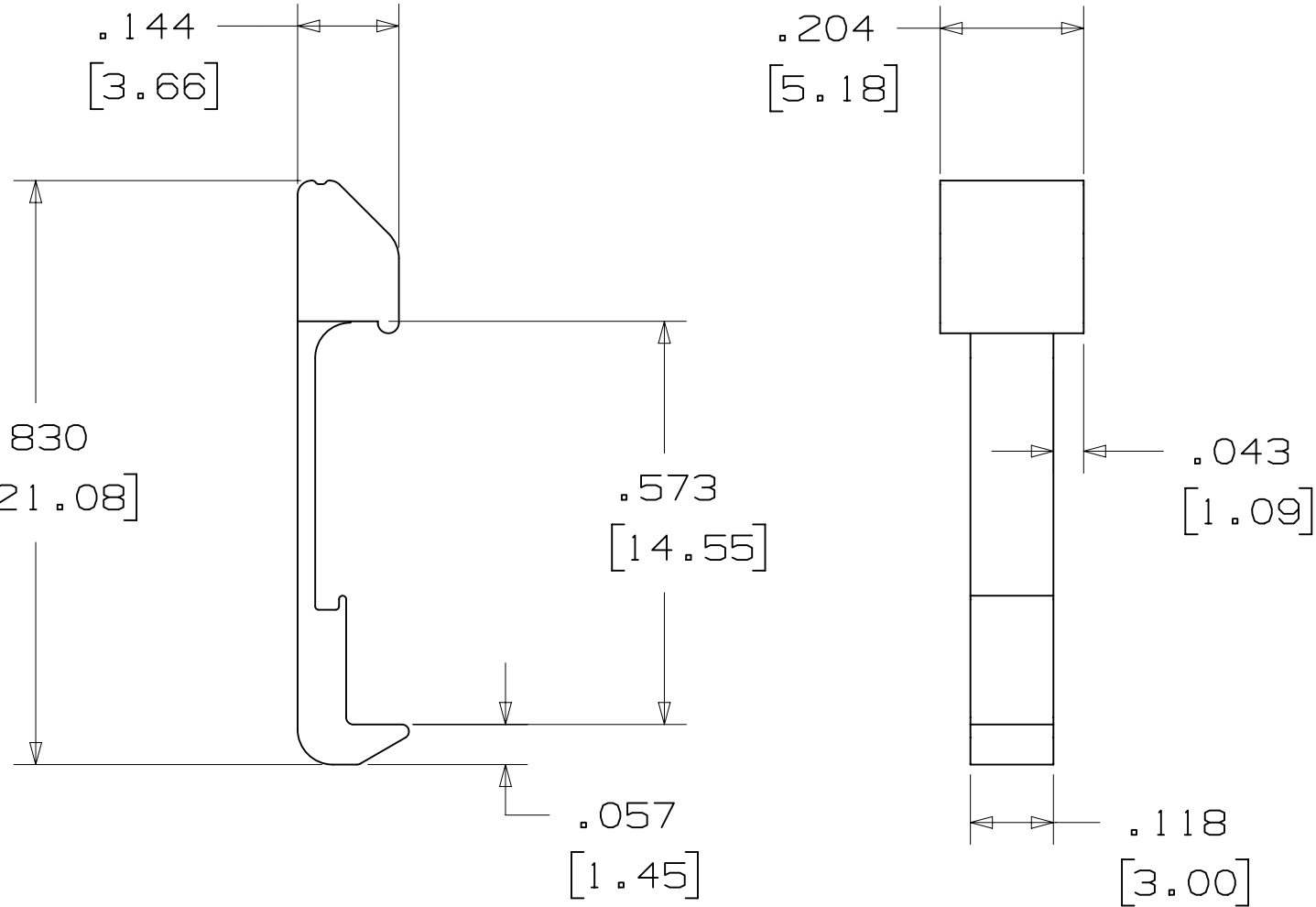
POLARIZING KEY



3M PART NO.	MATERIAL	COLOR
3518	PBT	GRAY
N3518	LCP	BLACK
D3518	PBT	BLACK

- NOTE:
- 1) #2216 B/A SCOTCHWELD CAN BE USED TO ADHERE KEYS.
 - 2) SEE INSTRUCTION SHEET 78-9100-7795-3 FOR ASSEMBLY.

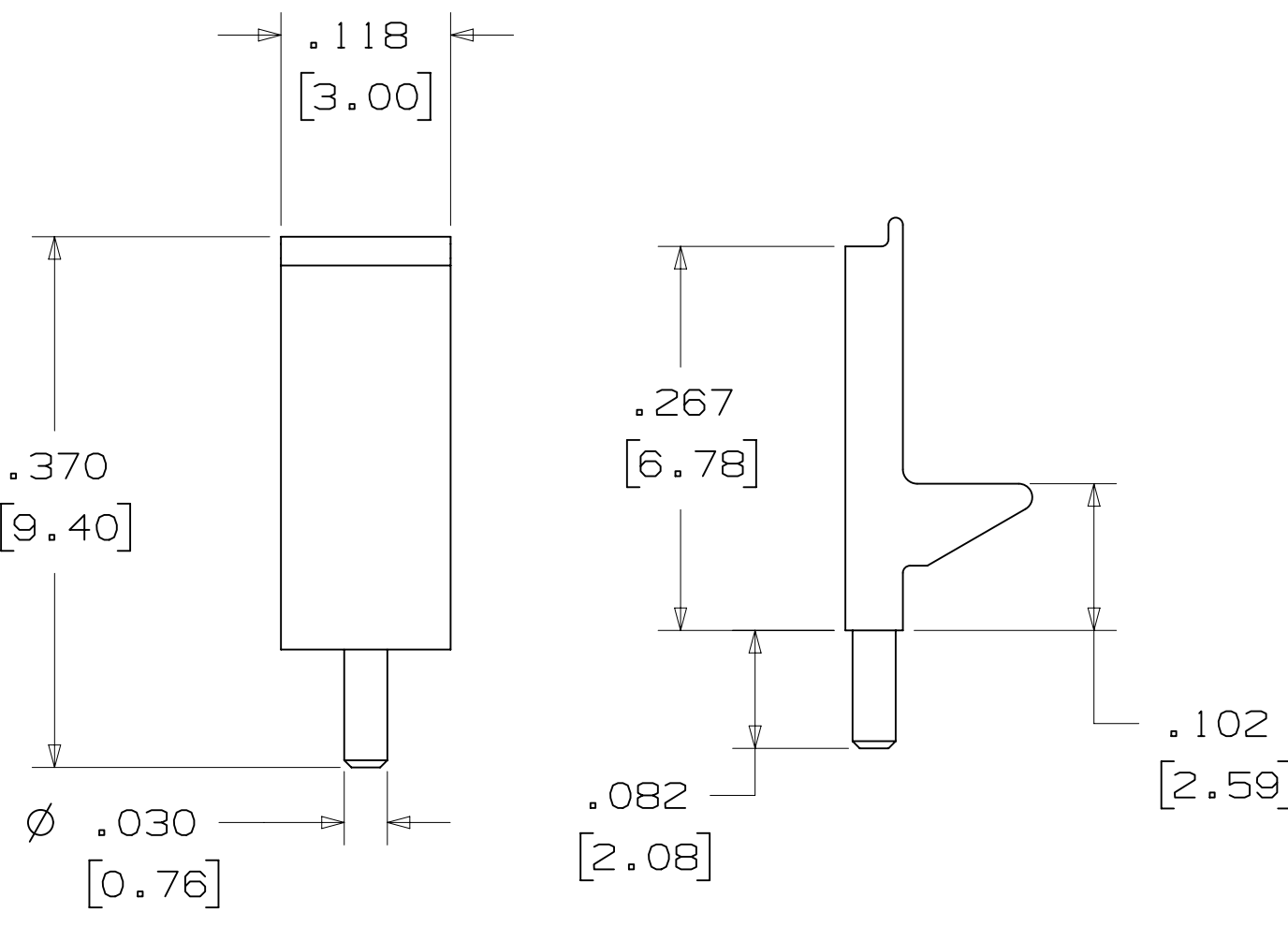
LOW PROFILE LATCH



PART NO.	MATERIAL	COLOR
3505-33B	NYLON	BLACK

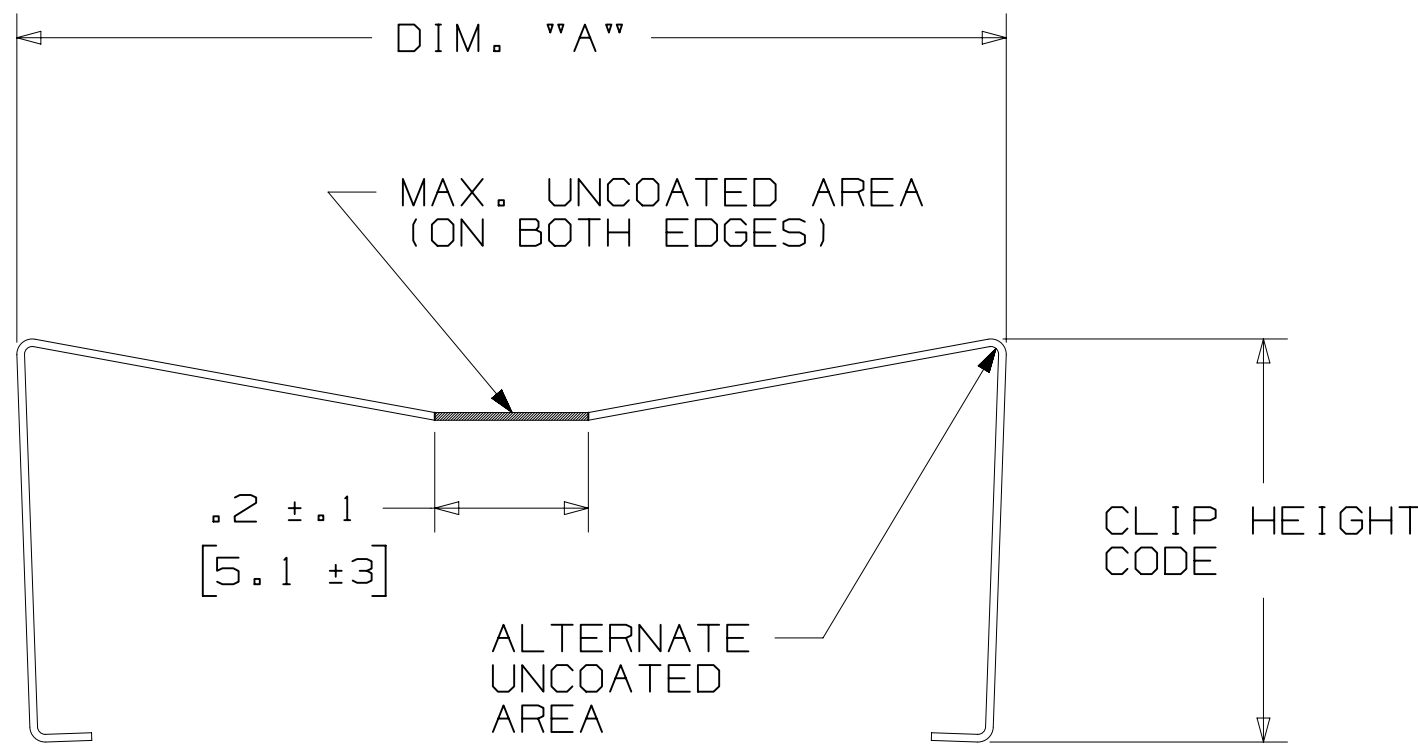
- NOTE:
1. LATCHES NOT COMPATIBLE WITH REFLOW SOLDERING. ATTACH LATCHES AFTER SOLDERING.
 2. LATCHES ARE MEANT FOR RETENTION ONLY.
 3. SEE LAST SHEET FOR ASSEMBLY.

POLARIZING POST



PART NO.	MATERIAL	COLOR
3201-3	PCT	BLACK

SHORT/LONG SOCKET RETAINER CLIP



.11
[2.8]

PIN QTY.	DIM. "A"
06	N/A
08	N/A
10	.81 [20.6]
14	1.02 [25.9]
16	1.12 [28.4]
20	1.32 [33.5]
24	1.52 [38.7]
26	1.63 [41.4]
30	1.83 [46.4]
34	2.03 [51.6]
36	N/A
40	2.33 [59.2]
50	2.83 [71.9]
60	3.33 [84.6]
64	3.53 [89.7]

- NOTE:
- STAINLESS STEEL WITH GRAY POLYURETHANE COATING.

3505-8XXX

CLIP HEIGHT CODE ——— PIN COUNT (SEE TABLE)
0 = .31 [7.9] FOR SOCKETS WITHOUT STRAIN RELIEF
1 = .53 [13.5] FOR SOCKETS WITH STRAIN RELIEF

- NOTE:
- 1) THE FOLLOWING RETAINER CLIPS HAVE BEEN DISCONTINUED:
3505-8064
3505-8124
3505-8150

DESIGN REFERENCE	NEXT ASSEMBLY	REV	ECO	ISSUE DATE AND DESCRIPTION	DRFT	CHKD
XXXX		DR	CASTIGLIONE	AUG 11, 2014	MFG	DATE
		CHKD		DATE	APPR	DATE
					R. SCHERER	SEP 05, 2014
DIVISION	Interconnect Solutions	DIVISION CODE	EMSD	© 3M COPYRIGHT 2020		
DO NOT SCALE DRAWING	SCALE 4/1	TOLERANCES EXCEPT AS NOTED		3M Center St. Paul, MN 55144		
THIRD ANGLE PROJECTION		INCHES .00 ±.01 .000 ±.0005 .0000 ±.0002		This document and the information it contains are 3M property and may not be reproduced or further distributed without 3M permission, or used or disclosed other than for 3M authorized purposes. All rights reserved.		
INTERPRET PER ASME Y14.5 - 2018		MILLIMETERS 0 ±.2 .00 ±.13 .000 ±.005		TITLE HEADER, 4-WALL, LO-PRO, .100 X .100, SMT, STRAIGHT & RA		
MAX SURFACE ROUGHNESS		DET SURFACES		CAGE NUMBER D78-5100-0770-7		
MARKED ONLY		ANGLES		MODEL 2500 SERIES		
				REV. P		
				SHT 5 OF 6		

3M™ FOUR-WALL HEADER, 2500 SERIES

.100" X .100" LOW PROFILE, SURFACE MOUNT, STRAIGHT AND RIGHT ANGLE THROUGH-HOLE

Regulatory: For regulatory information about this product, visit 3M.com/regs or contact your 3M representative.

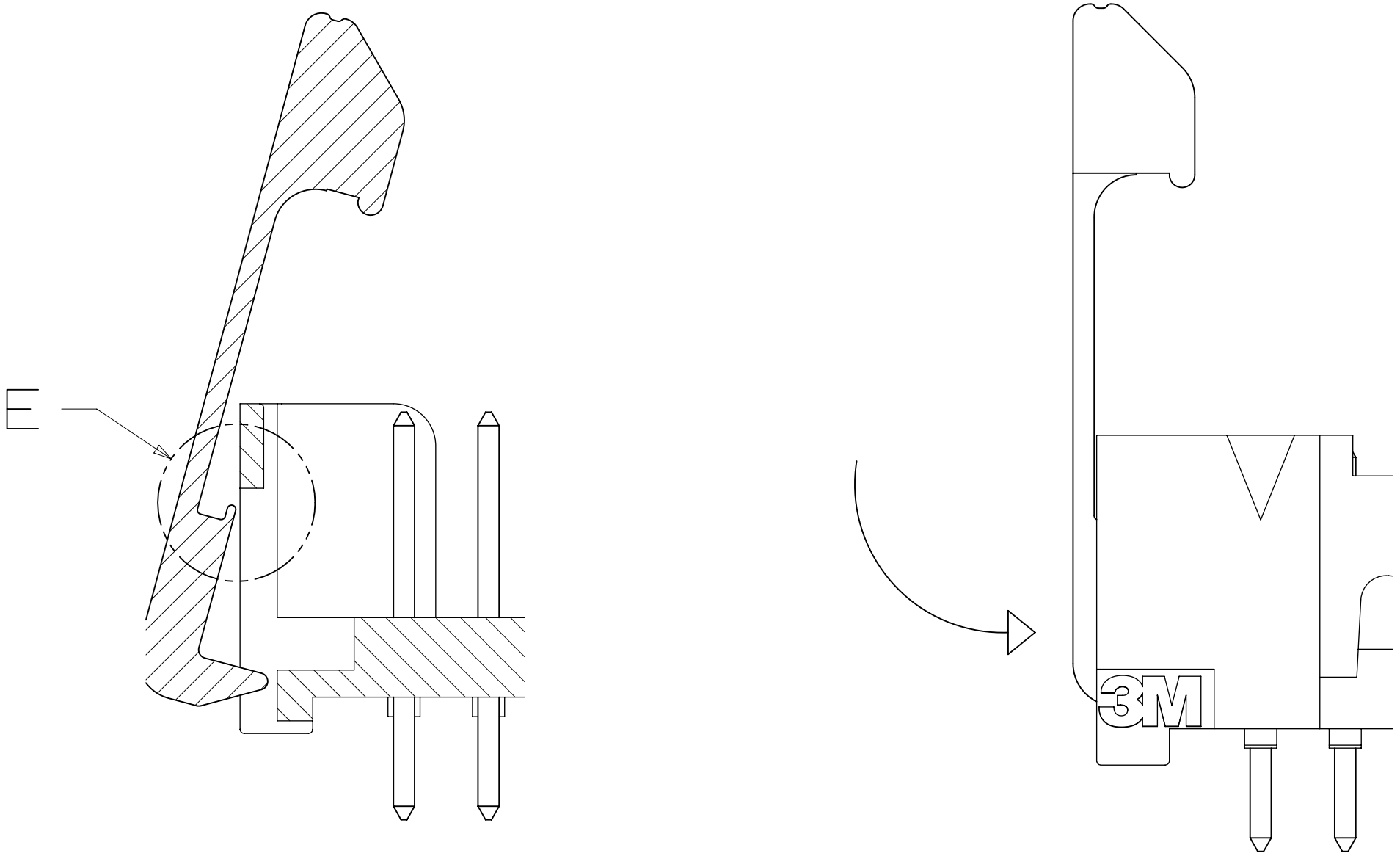
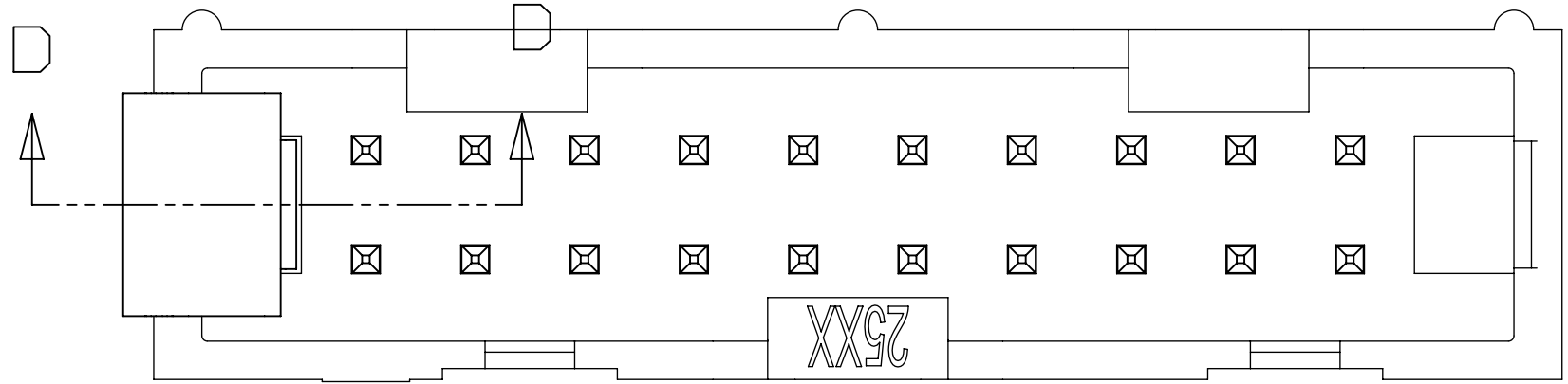
Technical Information: The technical information, recommendations and other statements contained in this document are based upon tests or experience that 3M believes are reliable, but the accuracy or completeness of such information is not guaranteed.

Product Use: Many factors beyond 3M's control and uniquely within user's control can affect the use and performance of a 3M product in a particular application. Given the variety of factors that can affect the use and performance of a 3M product, user is solely responsible for evaluating the 3M product and determining whether it is fit for a particular purpose and suitable for user's method of application.

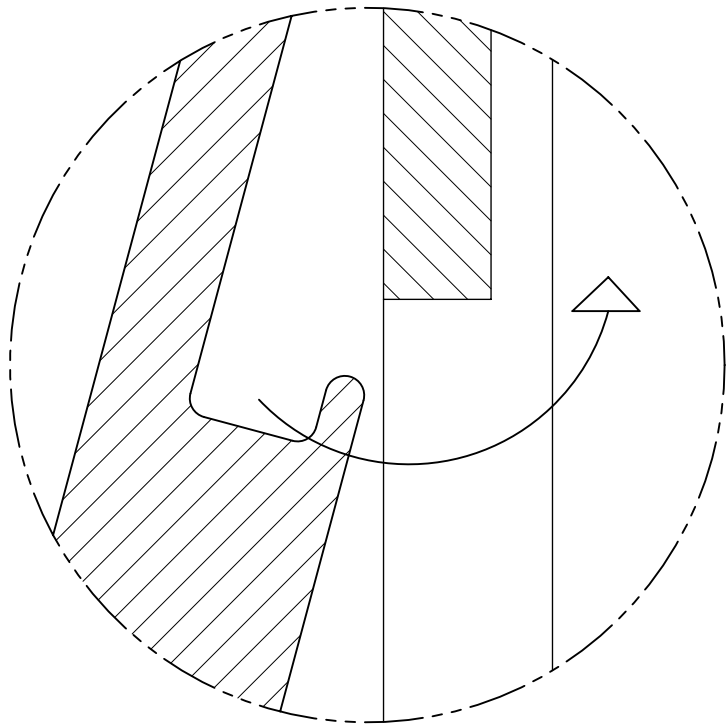
Warranty, Limited Remedy, and Disclaimer: Unless an additional warranty is specifically stated on the applicable 3M product packaging or product literature, 3M warrants that each 3M product meets the applicable 3M product specification at the time 3M ships the product. 3M MAKES NO OTHER WARRANTIES OR CONDITIONS, EXPRESS OR IMPLIED, INCLUDING, BUT NOT LIMITED TO, ANY IMPLIED WARRANTY OR CONDITION OF MERCHANTABILITY OR FITNESS FOR A PARTICULAR PURPOSE OR ANY IMPLIED WARRANTY OR CONDITION ARISING OUT OF A COURSE OF DEALING, CUSTOM OR USAGE OR TRADE. If the 3M product does not conform to this warranty, then the sole and exclusive remedy is, at 3M's option, replacement of the 3M product or refund of the purchase price.

Limitation of Liability: Except where prohibited by law, 3M will not be liable for any loss or damage arising from the 3M product, whether direct, indirect, special, incidental or consequential, regardless of the legal theory asserted, including warranty, contract, negligence or strict liability.

3M Company
Electronics Materials Solutions Division
13011 McCallen Pass, Bldg. C
Austin, TX 78753-5380
1-800-225-5373
www.3M.com/interconnect



SECTION D - D
SCALE 6x



Detail E
SCALE 20x

TO ASSEMBLE LATCH:
PLACE LIP UNDER OPENING IN END WALL.
PRESS INTO END WALL UNTIL LATCH CLICKS.

DESIGN REFERENCE		NEXT ASSEMBLY		REV	ECO	ISSUE DATE AND DESCRIPTION		DRFT	CHKD
ACCESS CODES				DRFT	CHKD	DATE	MFG	DATE	
				CASTIGLIONE		AUG 11, 2014			
							R. SCHERER	SEP 05, 2014	
DIVISION		DIVISION CODE							
Interconnect Solutions		EMSD							
DO NOT SCALE DRAWING		SCALE 6 1		TOLERANCES EXCEPT AS NOTED					

Mouser Electronics

Authorized Distributor

Click to View Pricing, Inventory, Delivery & Lifecycle Information:

[3M:](#)

[N2520-60K2UG](#) [N2534-6003UB](#) [N2510-7003UG](#) [N2530-6003UB](#) [N2540-5002UB](#) [2540-60K2UB](#) [2526-6003RB](#)
[2516-6005EB](#) [N2520-5003UB](#) [N2526-6V0C-RB-WF](#) [N2526-7002UB](#) [2514-6003UG](#) [2516-6003UG](#) [2550-5003UG](#)
[2550-60K2UB](#) [2560-5002UG](#) [2564-60K2UB](#) [2540-6003UG](#) [N2510-5003UB](#) [2520-60K2UB](#) [N2540-6003UG](#) [2534-](#)
[60K2UB](#) [N2540-7002UB](#) [2516-6302UG](#) [2524-5002UG](#) [2530-6003UB](#)