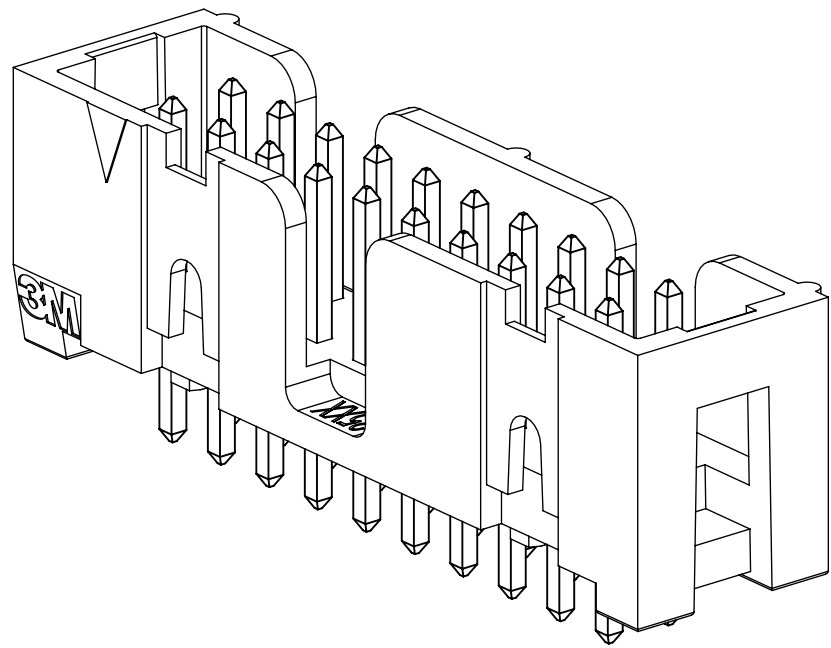
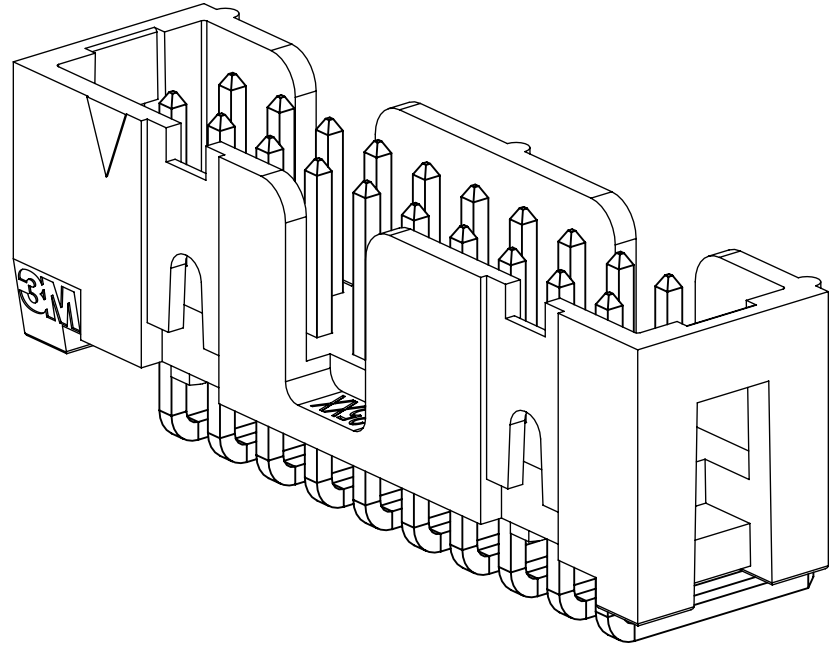


3M™ FOUR-WALL HEADER, 2500 SERIES

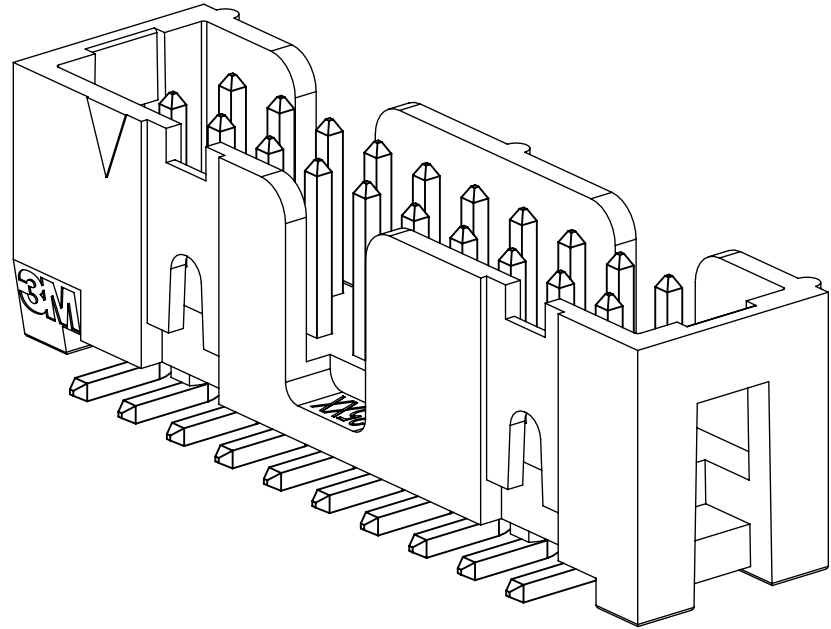
.100" X .100" LOW PROFILE, SURFACE MOUNT, STRAIGHT AND RIGHT ANGLE THROUGH-HOLE



X25XX-60XX
STRAIGHT VERSION



X25XX-50XX
RIGHT ANGLE VERSION



X25XX-6V0C
SURFACE MOUNT VERSION

- * LOW PROFILE, SPACE SAVING DESIGN.
- * CENTER SLOT POLARIZATION PREVENTS MIS-INSERTIONS AND REDUCES INSERTION TIME.
- * DUAL SLOT POLARIZATION MEANS BROADER COMPATIBILITY WITH COMPETITIVE POLARIZATION DESIGNS (NOT AVAILABLE ON 6, 8 OR 10 POSITIONS).
- * OPTIONAL RETAINER CLIP FOR LOCKING SOCKETS IN PLACE AND INCREASING CONNECTION RELIABILITY IN VIBRATION-PRONE ENVIRONMENTS.
- * HIGH TEMPERATURE INSULATOR SUITABLE FOR "NO LEAD" SOLDERING OPERATIONS.
- * THROUGH HOLE VERSION SUITABLE FOR REFLOW SOLDERING USING "PASTE IN HOLE" TECHNIQUES.
- * EXPOSED SOLDER TAILS (ON RIGHT ANGLE VERSION) PROVIDE EASE OF CLEANING AND REDUCED REPAIR COST.
- * STRAIGHT SURFACE MOUNT VERSION AVAILABLE.

2 PHYSICAL :

INSULATOR:
MATERIAL: HIGH TEMPERATURE GLASS FILLED POLYESTER (PCT)
FLAMMABILITY: UL94V-0
COLOR: BLACK
CONTACT:
MATERIAL: COPPER ALLOY
PLATING:
UNDER PLATING: NICKEL UNDERPLATE (SEE ORDERING INFORMATION)
WIPING AREA: GOLD (SEE ORDERING INFORMATION)
SOLDER TAILS: MATTE TIN (SEE ORDERING INFORMATION)
MARKINGS: 3M LOGO, PART IDENTIFICATION NUMBER AND ORIENTATION TRIANGLE

2 ELECTRICAL :

CURRENT RATING: 5.00A, 1 CONTACT POWERED
3.00A, 6 CONTACTS POWERED
1.75A, ALL CONTACTS POWERED
RATING CONDITIONS: EIA-364-070 METHOD 2, 30°C MAXIMUM TEMPERATURE RISE, 20% DERATED. REFERENCE APPROPRIATE 3M PRODUCT SPECIFICATION FOR DETAILED CURRENT DERATING CURVES.
INSULATION RESISTANCE: >1 X 10⁹Ω AT 500 V_{DC}
WITHSTANDING VOLTAGE: 1,000V_{RMS} AT SEA LEVEL

2 ENVIRONMENTAL :

TEMPERATURE RATING: -55°C TO 105°C
PROCESS RATING: 260°C, PER J-STD-020C, SINGLE PASS
MOISTURE SENSITIVITY LEVEL: 1 (PER J-STD-020C)

- NOTES
1. REGULATORY INFORMATION:
VISIT 3M.com/regs
 2. IN THE EVENT OF CONFLICT BETWEEN THIS DATA AND THAT CONTAINED IN THE PRODUCT SPECIFICATION, THE PRODUCT SPECIFICATION TAKES PRECEDENT.
 3. NOTCHES A & C WILL ACCOMODATE 3M POLARIZING KEY: N3518.
 4. CONTACT TAILS .0245 (.622) WIRE WITH .0075 (.191) CORNER RADI AND .028 (.072) DIAGONAL.
 5. SOLDER STANDOFFS FACILITATE .01 (.3) CLEARANCE ABOVE BOARD FOR REFLOW SOLDERING.

3M ELECTRONIC MATERIALS SOLUTIONS DIVISION
INTERCONNECT SOLUTIONS
<http://www.3mconnectors.com>

3M IS A TRADEMARK OF 3M COMPANY.
FOR TECHNICAL, SALES OR ORDERING
INFORMATION CALL 800-225-5373

UL
UL FILE NO: E68080

DIMENSIONS: INCHES [MM]

DESIGN REFERENCE		NEXT ASSEMBLY		REV	ECO	ISSUE DATE AND DESCRIPTION		DRFT	CHKD
ACCESS CODES				DRFT	CHKD	DATE	DATE	MFG	
						AUG 11, 2014			
								APPR.	DATE
								R. SCHERER	SEP 05, 2014
DIVISION		DIVISION CODE							
Interconnect Solutions		EMSD							
DO NOT SCALE DRAWING		SCALE 4 1		TOLERANCES EXCEPT AS NOTED					
				INCHES					
				.0		± .1			
				.00		± .01			
				.000		± .005			
				.0000		± .0002			
THIRD ANGLE PROJECTION				MILLIMETERS					
				0		± 2			
INTERPRET PER ASME Y14.5 - 2018				.0		± .3			
MAX SURFACE ROUGHNESS				.00		± .13			
SURFACES				.000		± .005			
<input checked="" type="checkbox"/> MARKED ONLY				ANGLES					

3M™ FOUR-WALL HEADER, 2500 SERIES
.100" X .100" LOW PROFILE, SURFACE MOUNT, STRAIGHT AND RIGHT ANGLE THROUGH-HOLE

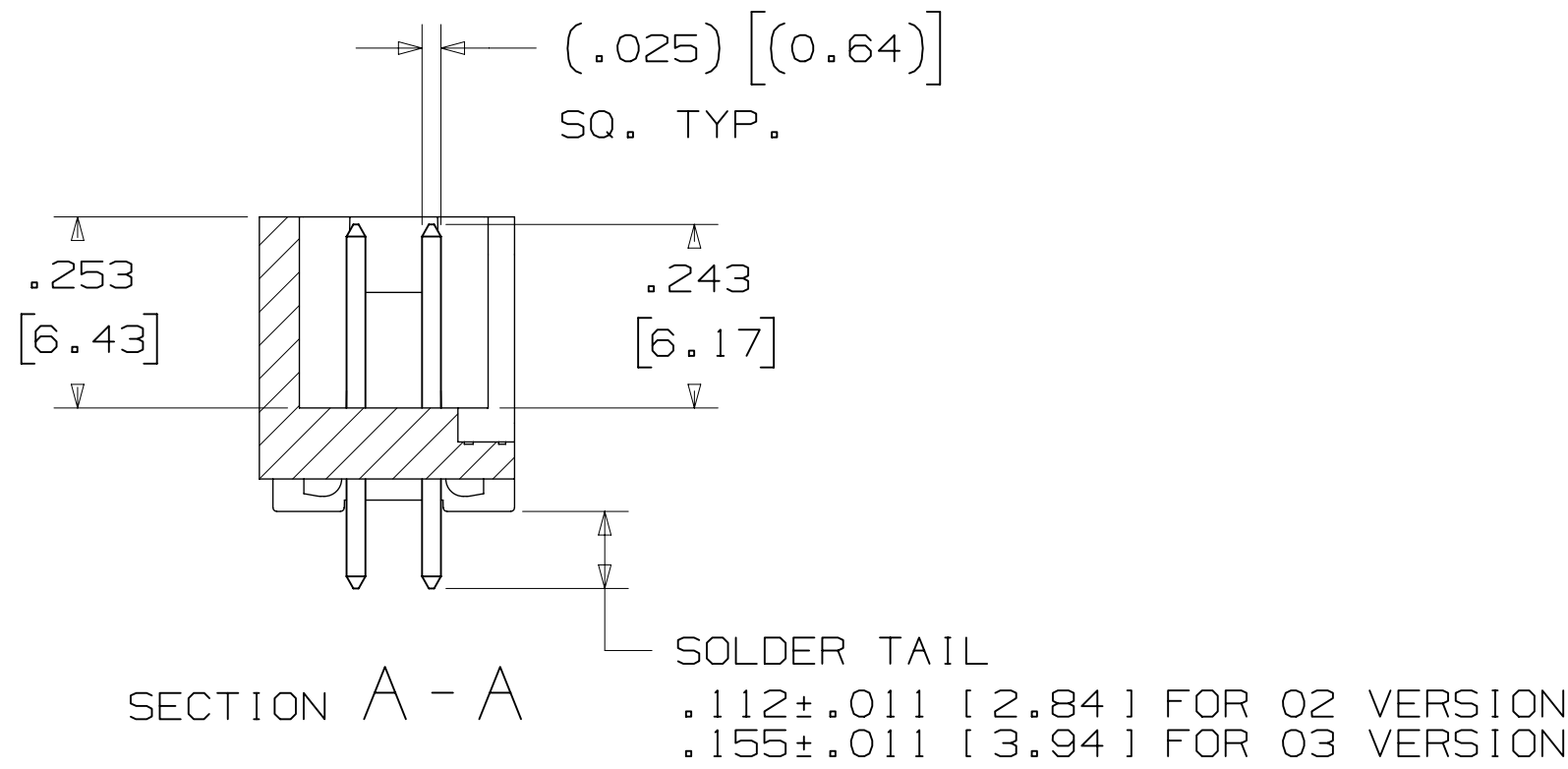


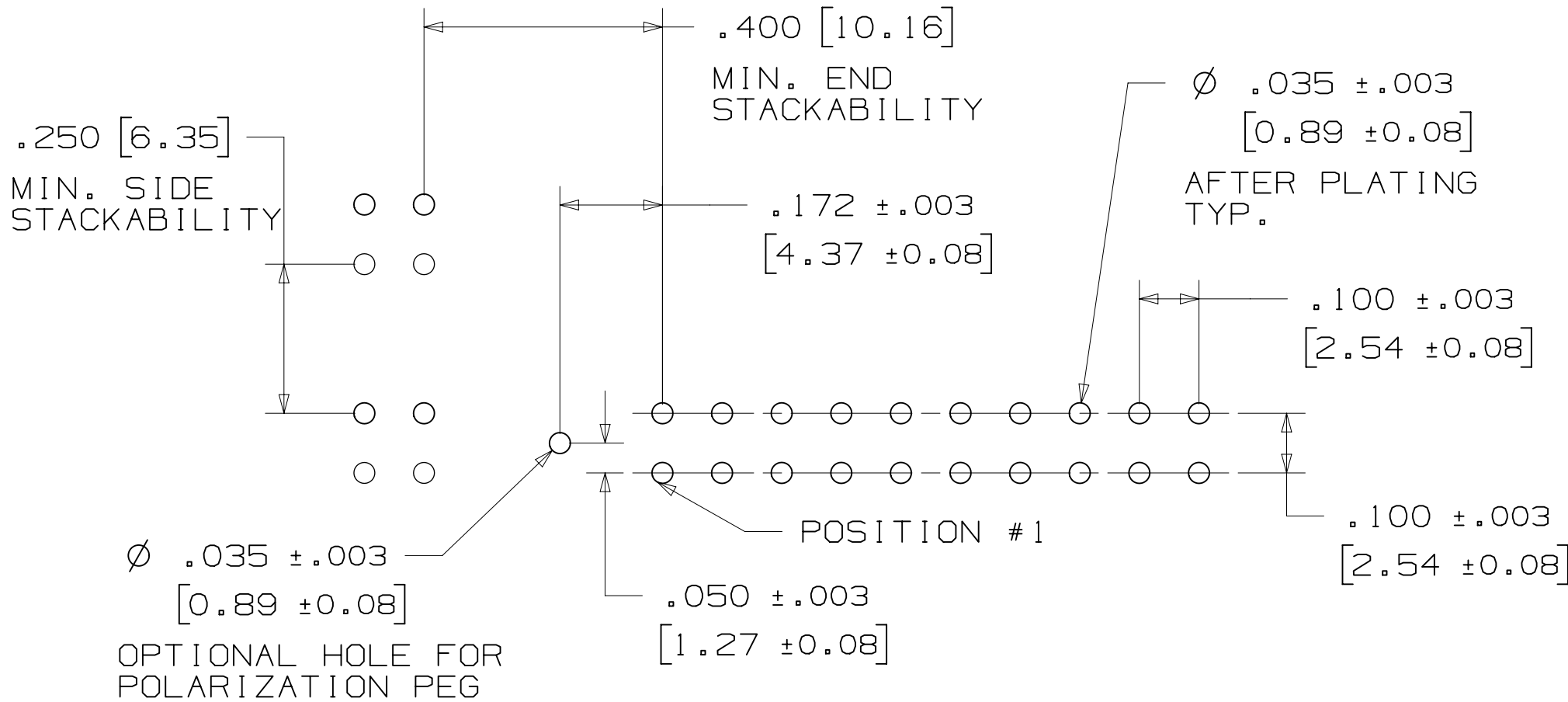
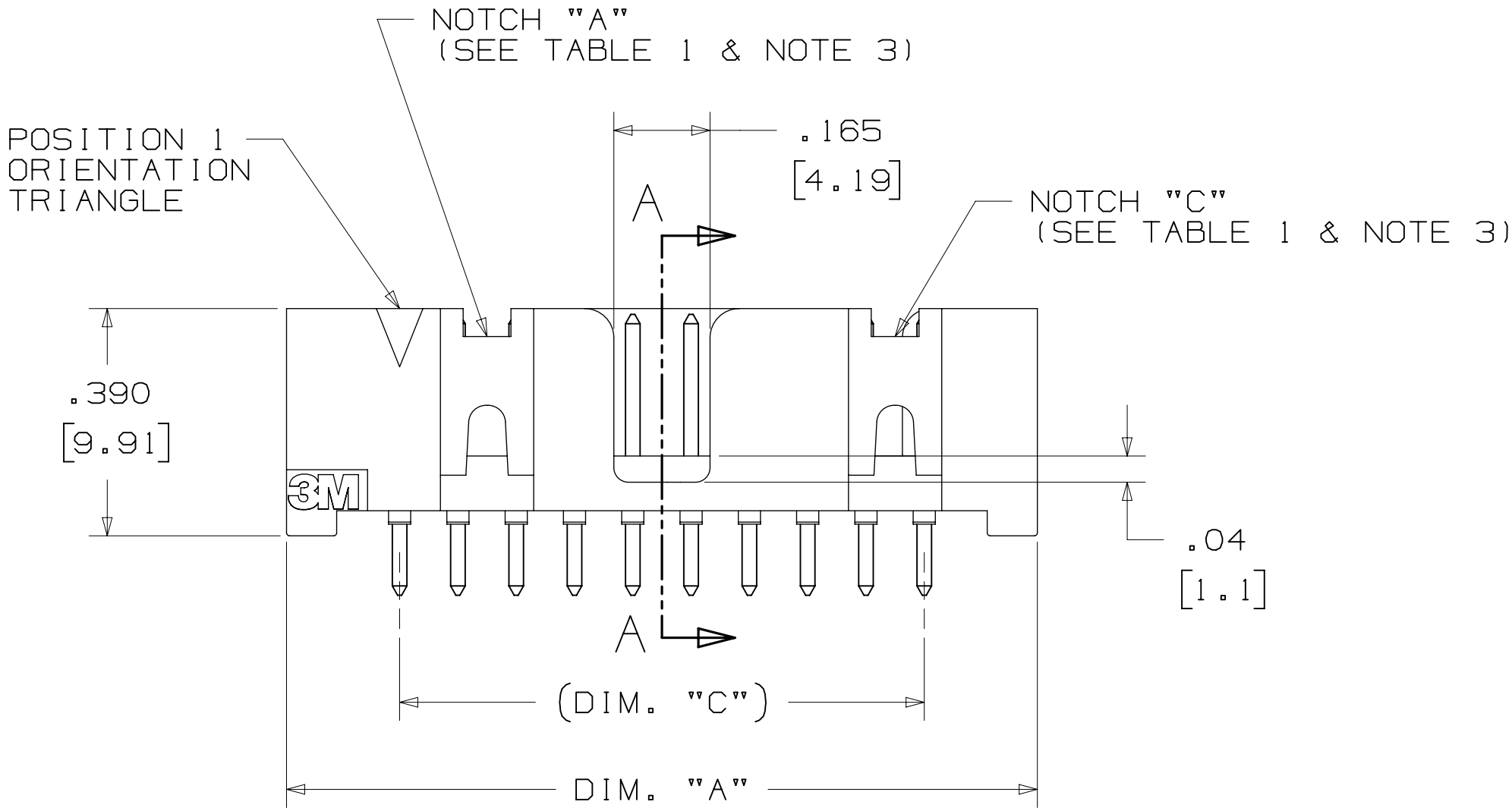
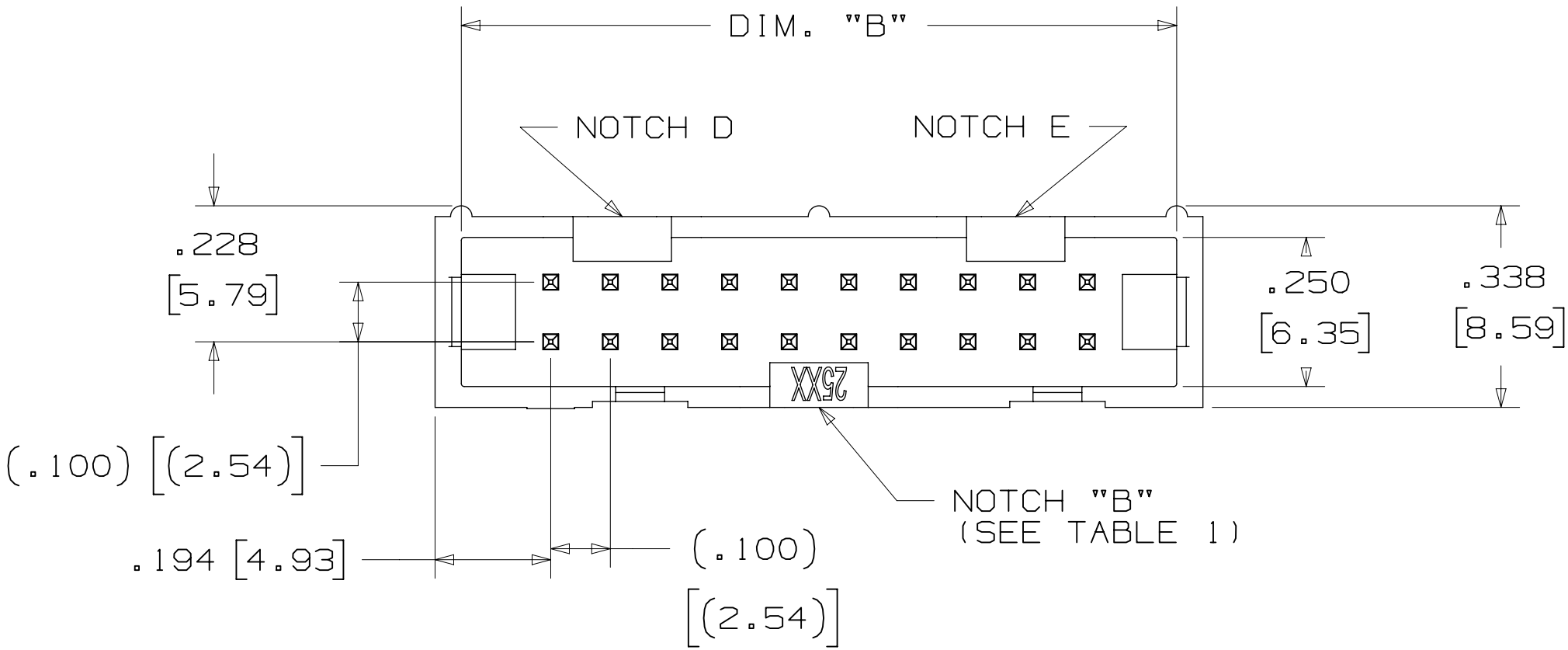
TABLE 1					
PIN QTY.	DIM. "A"	DIM. "B"	DIM. "C"	POLARIZING NOTCHES	PIN QTY.
06	.588 [14.94]	.508 [12.90]	.200 [5.08]	B	06
08	.688 [17.48]	.608 [15.44]	.300 [7.62]	B	08
10	.788 [20.02]	.708 [17.98]	.400 [10.16]	BC	10
14	.988 [25.10]	.908 [23.06]	.600 [15.24]	BCDE	14
16	1.088 [27.64]	1.008 [25.60]	.700 [17.78]	ABCDE	16
20	1.288 [32.72]	1.208 [30.68]	.900 [22.86]	ABCDE	20
24	1.488 [37.80]	1.408 [35.76]	1.100 [27.94]	ABCDE	24
26	1.588 [40.34]	1.508 [38.30]	1.200 [30.48]	ABCDE	26
30	1.788 [45.42]	1.708 [43.38]	1.400 [35.56]	ABCDE	30
34	1.988 [50.50]	1.908 [48.46]	1.600 [40.64]	ABCDE	34
36	2.088 [53.04]	2.008 [51.00]	1.700 [43.18]	ABCDE	36
40	2.288 [58.12]	2.208 [56.08]	1.900 [48.26]	ABCDE	40
50	2.788 [70.82]	2.708 [68.78]	2.400 [60.96]	ABCDE	50
60	3.288 [83.52]	3.208 [81.48]	2.900 [73.66]	ABCDE	60
64	3.488 [88.60]	3.408 [86.56]	3.100 [78.74]	ABCDE	64

ORDERING INFORMATION
STRAIGHT VERSION

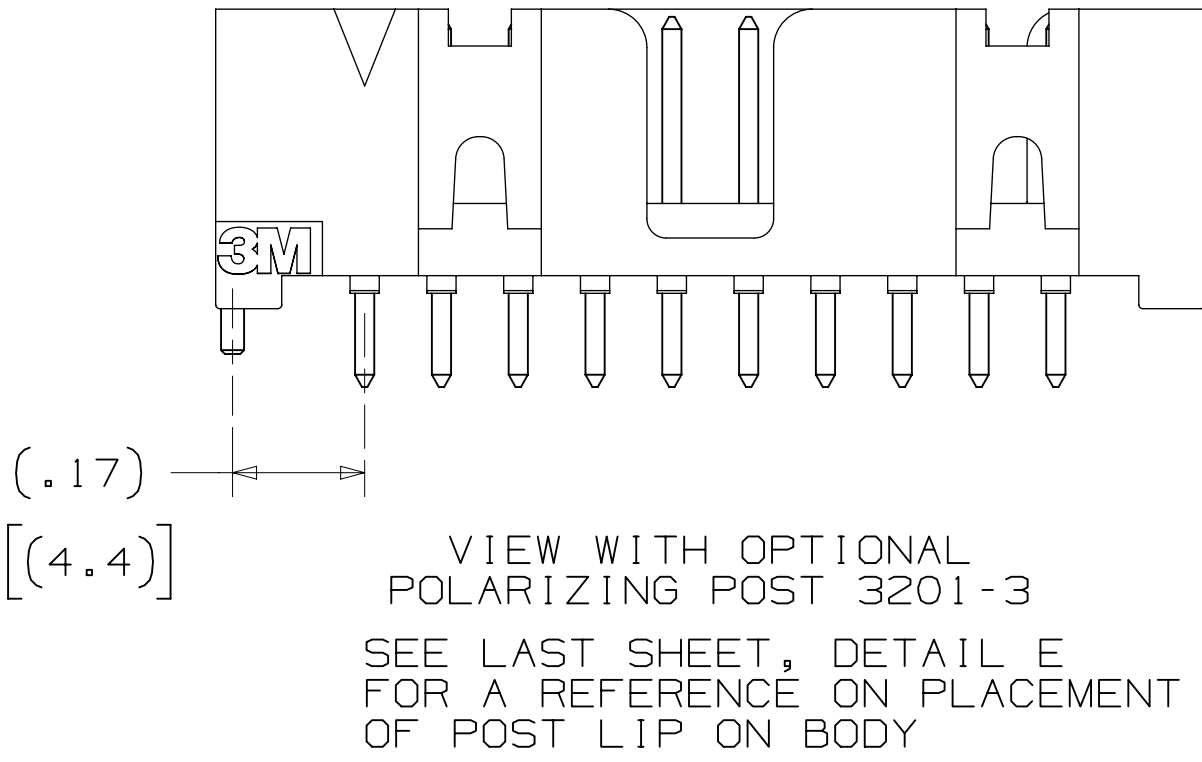
X25XX-60XX-XX

N = RB PLATING REQ'D
D = AR PLATING REQ'D (02 SOLDER TAIL ONLY)
PIN QUANTITY: (SEE TABLE 1)
SOLDER TAIL:
02 = FOR .062 [1.57] THICK BOARD
03 = FOR .094 TO .125 [2.39 TO 3.18] THICK BOARD (SOLDER TAIL LENGTH ONLY AVAILABLE ON N25XX-60XX-RB)

PLATING:
AR = 10μ" [0.25μm] GOLD AVG.
50μ-150μ [1.27μm-3.81μm] NICKEL UNDERPLATE
40μ-120μ [1.02μm-3.05μm] MATTE TIN (RIA, E1 & C1 APPLY)
RB = 30μ" [0.76μm] GOLD AVG.
50μ-150μ [1.27μm-3.81μm] NICKEL UNDERPLATE
25μ-200μ [0.63μm-5.08μm] MATTE TIN (RIA, E1 & C1 APPLY)



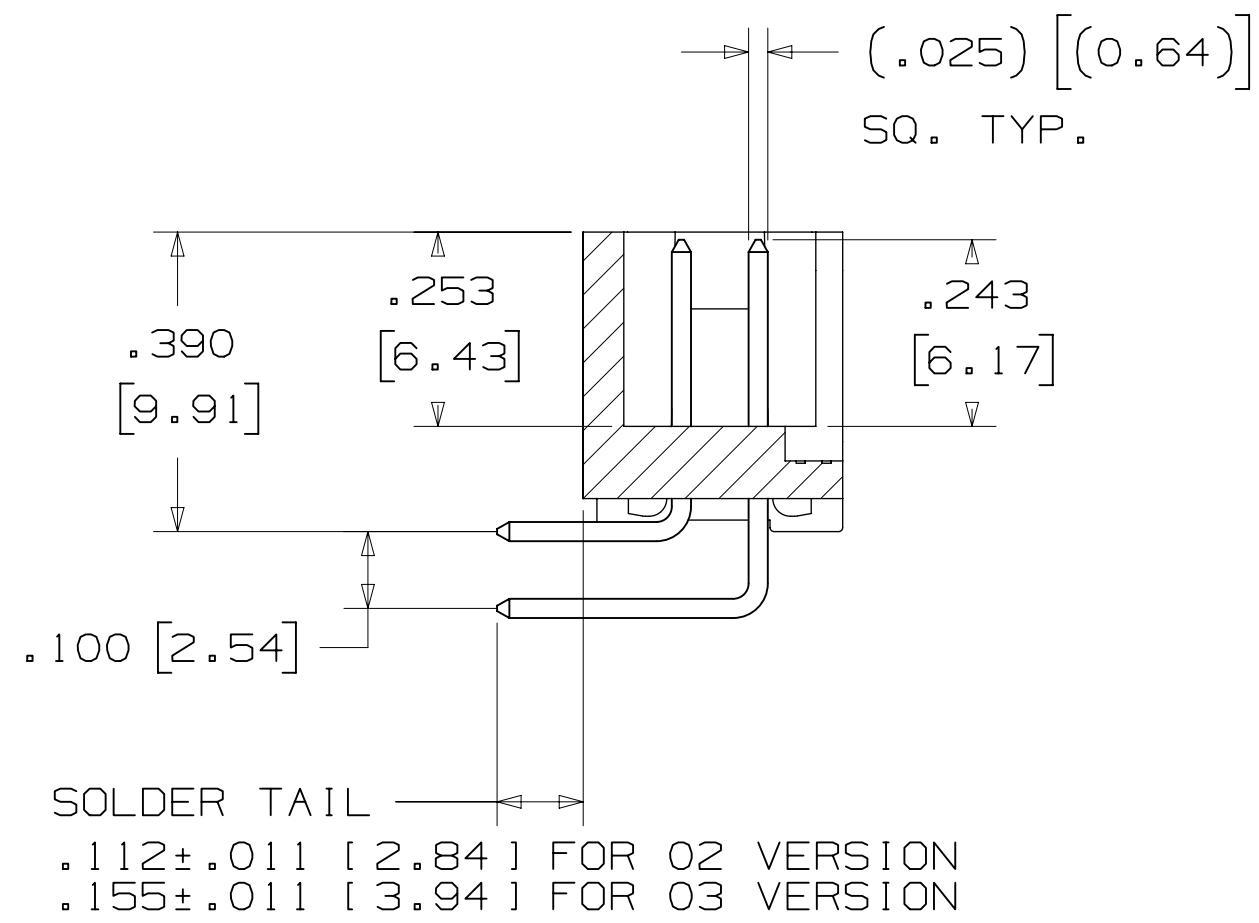
RECOMMENDED HOLE PATTERN
SHOWN FROM COMPONENT SIDE



DESIGN REFERENCE		NEXT ASSEMBLY		REV	ECO	ISSUE DATE AND DESCRIPTION		DRFT	CHKD
DIVISION		DIVISION CODE		DRP	CAST	IGL	ONE	DATE	DATE
Interconnect Solutions		EMSD		DATE	DATE	DATE	DATE	DATE	DATE
DO NOT SCALE DRAWING		SCALE 4/1		TOLERANCES EXCEPT AS NOTED		INCHES .0 .001 .01 .000 .0005 .0000 ±.0002			
THIRD ANGLE PROJECTION		INTERPRET PER ASME Y14.5 - 2018		MILLIMETERS 0 .0 .001 .01 .000 .0005 .0000 ±.0002		ANGLES			
MAX SURFACE ROUGHNESS		SURFACES		CAGE NUMBER		DRAWING NO.		REV.	
MARKED ONLY		MARKED ONLY		D78-5100-0770-7		2500 SERIES		SHT 2 OF 6	

3M™ FOUR-WALL HEADER, 2500 SERIES

.100" X .100" LOW PROFILE, SURFACE MOUNT, STRAIGHT AND RIGHT ANGLE THROUGH-HOLE



SECTION B - B

PIN QTY.	DIM. "A"	DIM. "B"	DIM. "C"	POLARIZING NOTCHES	PIN QTY.
06	.588 [14.94]	.508 [12.90]	.200 [5.08]	B	06
08	.688 [17.48]	.608 [15.44]	.300 [7.62]	B	08
10	.788 [20.02]	.708 [17.98]	.400 [10.16]	BC	10
14	.988 [25.10]	.908 [23.06]	.600 [15.24]	BCDE	14
16	1.088 [27.64]	1.008 [25.60]	.700 [17.78]	ABCDE	16
20	1.288 [32.72]	1.208 [30.68]	.900 [22.86]	ABCDE	20
24	1.488 [37.80]	1.408 [35.76]	1.100 [27.94]	ABCDE	24
26	1.588 [40.34]	1.508 [38.30]	1.200 [30.48]	ABCDE	26
30	1.788 [45.42]	1.708 [43.38]	1.400 [35.56]	ABCDE	30
34	1.988 [50.50]	1.908 [48.46]	1.600 [40.64]	ABCDE	34
36	2.088 [53.04]	2.008 [51.00]	1.700 [43.18]	ABCDE	36
40	2.288 [58.12]	2.208 [56.08]	1.900 [22.86]	ABCDE	40
50	2.788 [70.82]	2.708 [68.78]	2.400 [60.96]	ABCDE	50
60	3.288 [83.52]	3.208 [81.48]	2.900 [73.66]	ABCDE	60
64	3.488 [88.60]	3.408 [86.56]	3.100 [78.74]	ABCDE	64

ORDERING INFORMATION
RIGHT ANGLE VERSION

X25XX-50XX-XX

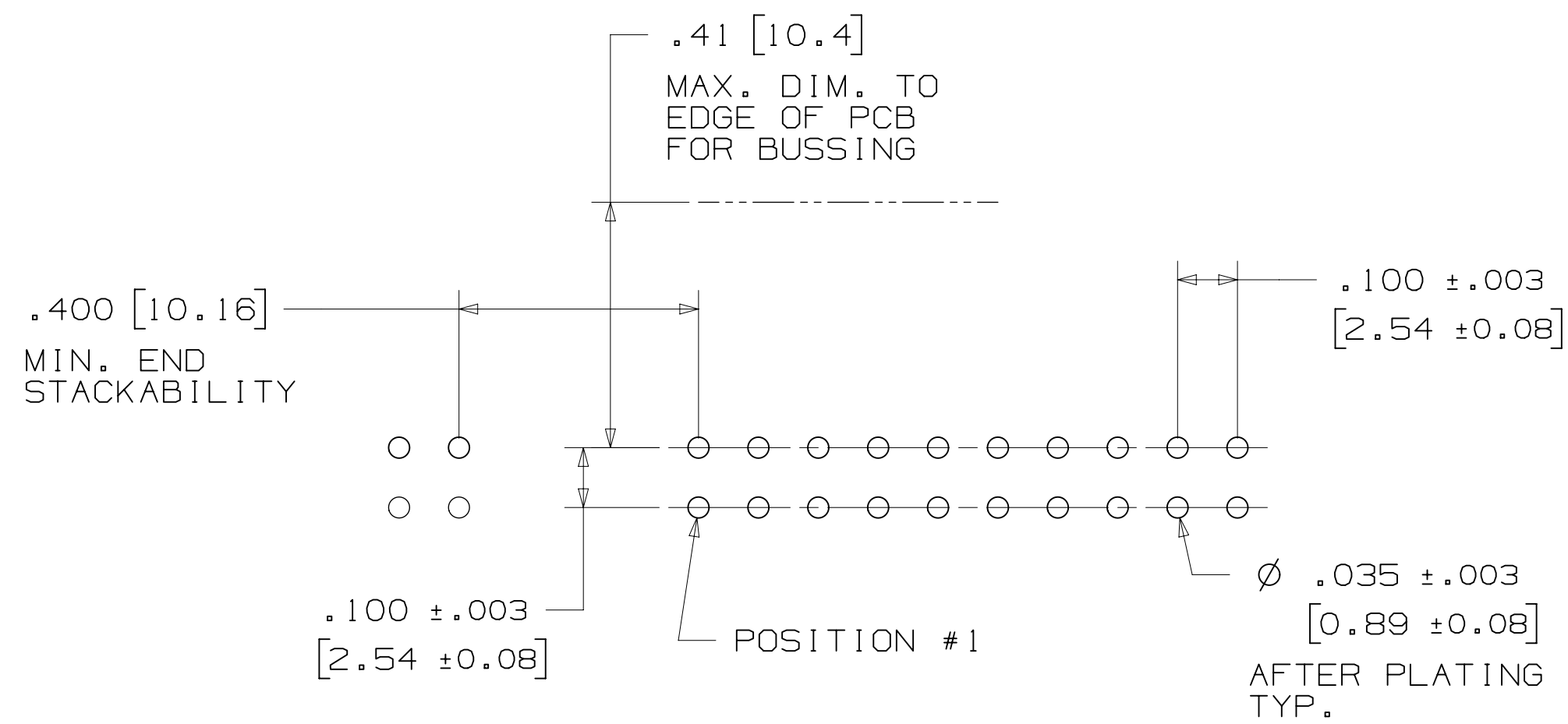
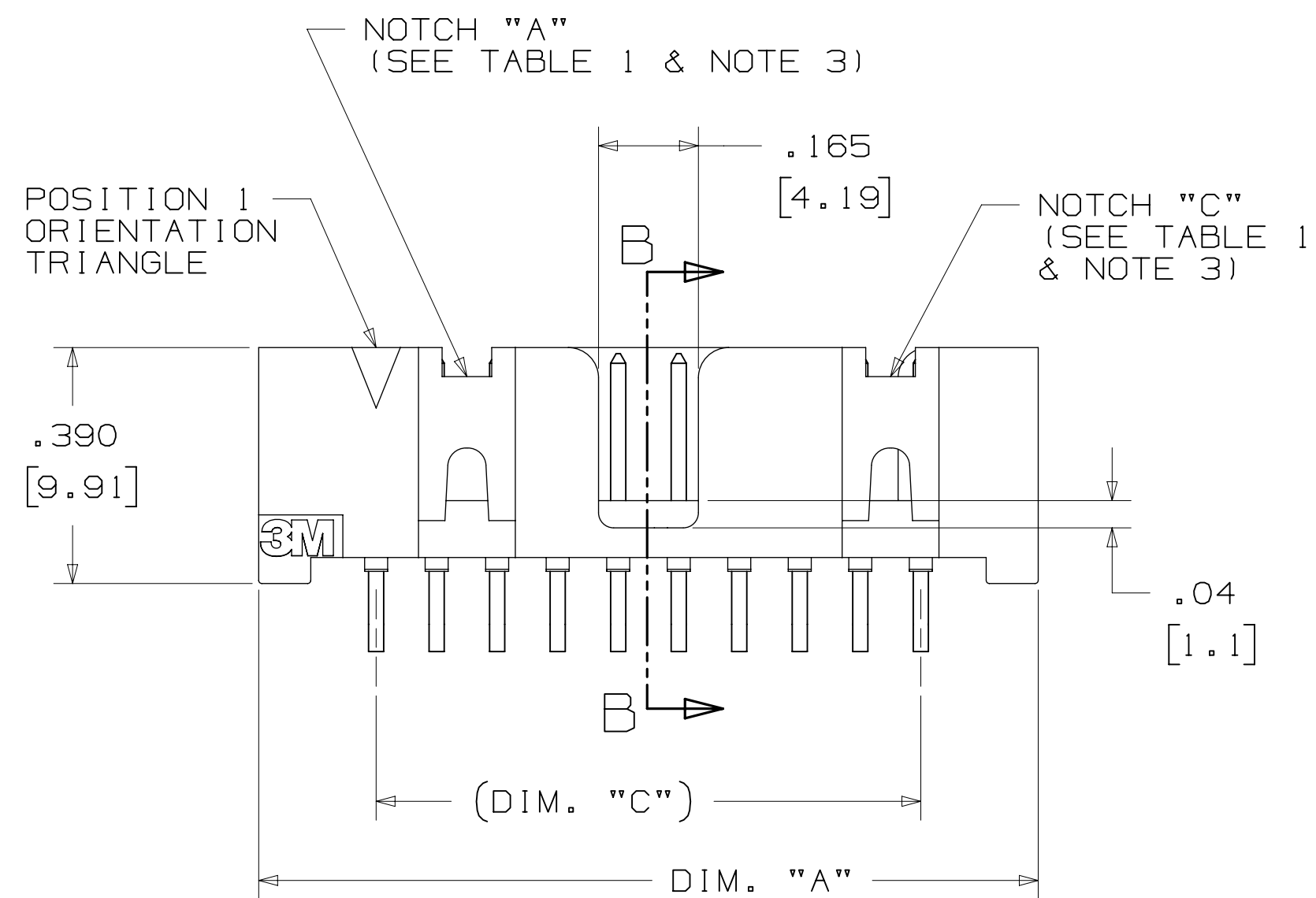
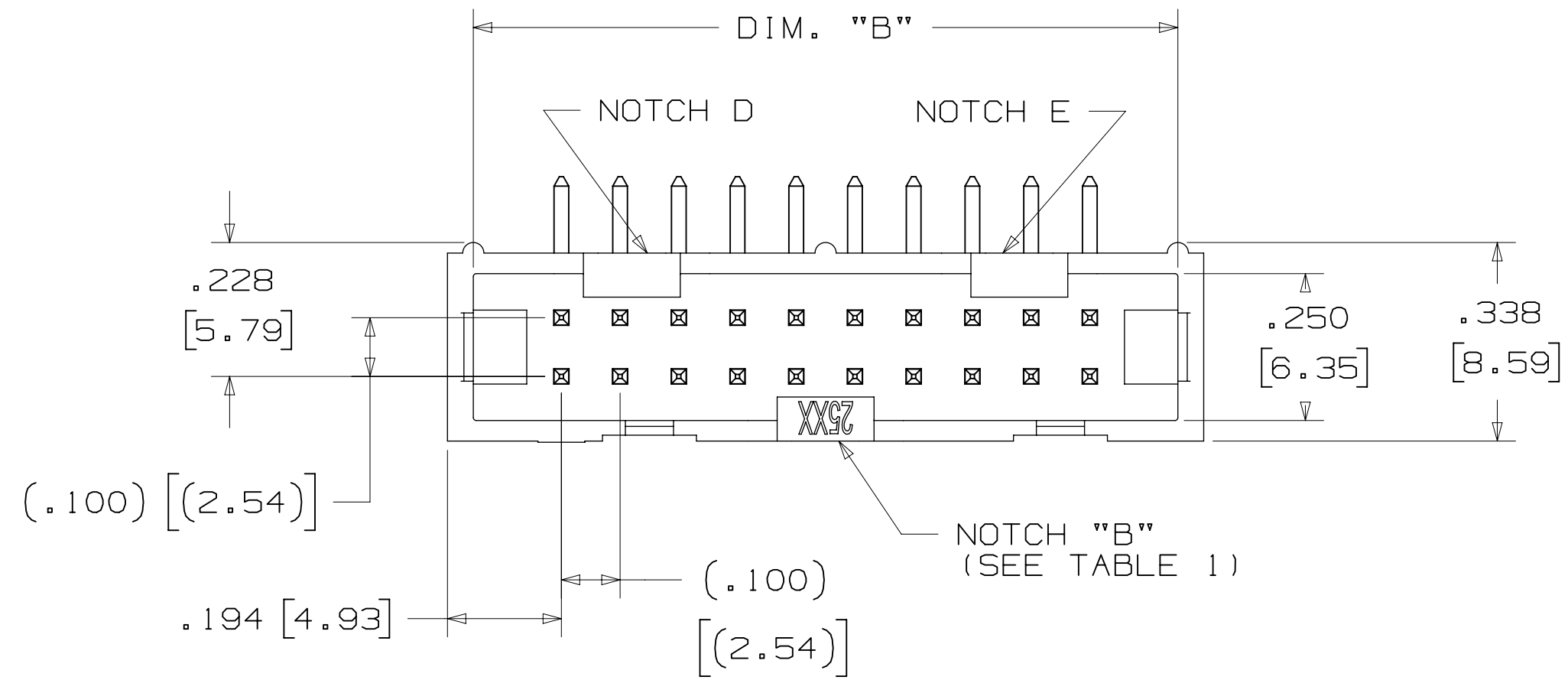
N = RB PLATING REQ'D _____
D = AR PLATING REQ'D _____
(02 SOLDER TAIL ONLY)

PIN QUANTITY:-
(SEE TABLE 1)

SOLDER TAIL: _____
 02 = FOR .062 [1.57] THICK BOARD
 03 = FOR .094 TO .125 [2.39 TO 3.18]
 THICK BOARD (SOLDER TAIL LENGTH ONLY
 AVAILABLE ON N25XX-50XX-RB)

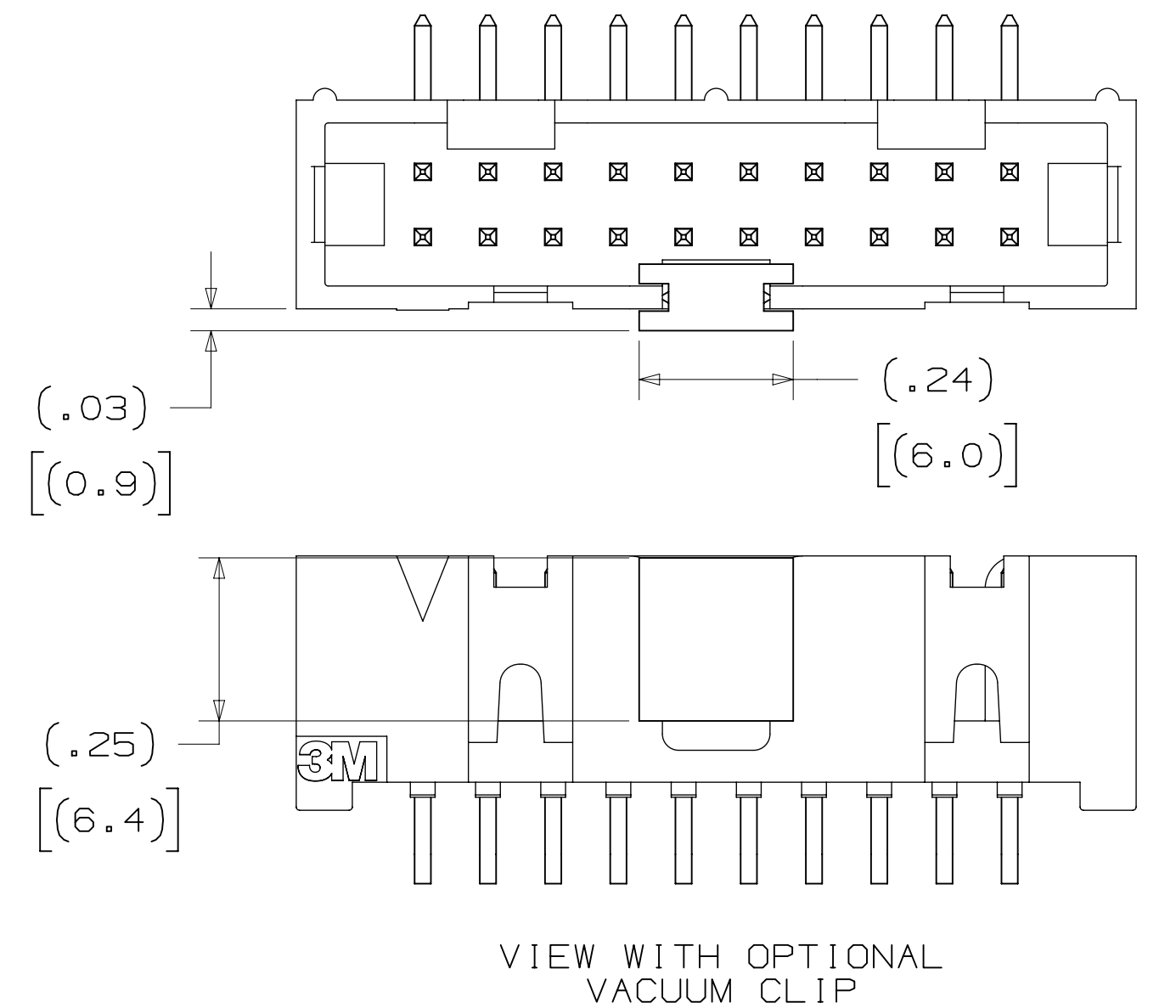
- PLATING:
AR = 10μ" [0.25μm] GOLD AVG.
50μ-150μ [1.27μm-3.81μm] NICKEL UNDERPLATE
40μ-120μ" [1.02μm-3.05μm] MATTE TIN (RIA. E1 & C1 APPLY)

RB = 30 μ " [0.76 μ m] GOLD AVG.
50 μ -150 μ [1.27 μ m-3.81 μ m] NICKEL UNDERPLATE
25 μ -200 μ " [0.63 μ m-5.08 μ m] MATTE TIN (RIA. E1 & C1 APPLY)



RECOMMENDED HOLE PATTERN
SHOWN FROM COMPONENT SIDE

DESIGN REFERENCE		NEXT ASSEMBLY		REV		ECO		ISSUE DATE AND DESCRIPTION		DRFT		CHKD	
ADDENDUMS		DATE		DATE		MFG		DATE		DATE		DATE	
		11/10/2014		11/10/2014				11/10/2014		11/10/2014		11/10/2014	
								APPROV. R. SCHERER		DATE SEP 05, 2014			
DIVISION				DIVISION CODE				© 3M COPYRIGHT 2020					
Interconnect Solutions				EMSD				This document and the information it contains are 3M property and may not be reproduced or further distributed without 3M permission, or used or disclosed other than for 3M authorized purposes. All rights reserved.					
DO NOT SCALE DRAWING		SCALE 4/1		TOLERANCES EXCEPT AS NOTED		3M Center St. Paul, MN 55144							
THIRD ANGLE PROJECTION				INCHES				TITLE					
				.00 .01 .005 .0002				HEADER, 4-WALL, LO-PRO, .100 X .100, SMT, STRAIGHT & RA					
INTERPRET PER ASME Y14.5 - 2018				MILLIMETERS				CAGE NUMBER					
				.0 .1 .005				DRAWING NO.					
MAX SURFACE ROUGHNESS				.00 .13 .005				D 78-5100-0770-7					
MIN SURFACES				.00 .13 .005				REV. P					
✓ □ MARKED ONLY				ANGLE				MODEL					
				2500 SERIES				DET. LISTS YES X NO SHT 3 OF 6					



3M™ FOUR-WALL HEADER, 2500 SERIES
.100" X .100" LOW PROFILE, SURFACE MOUNT, STRAIGHT AND RIGHT ANGLE THROUGH-HOLE

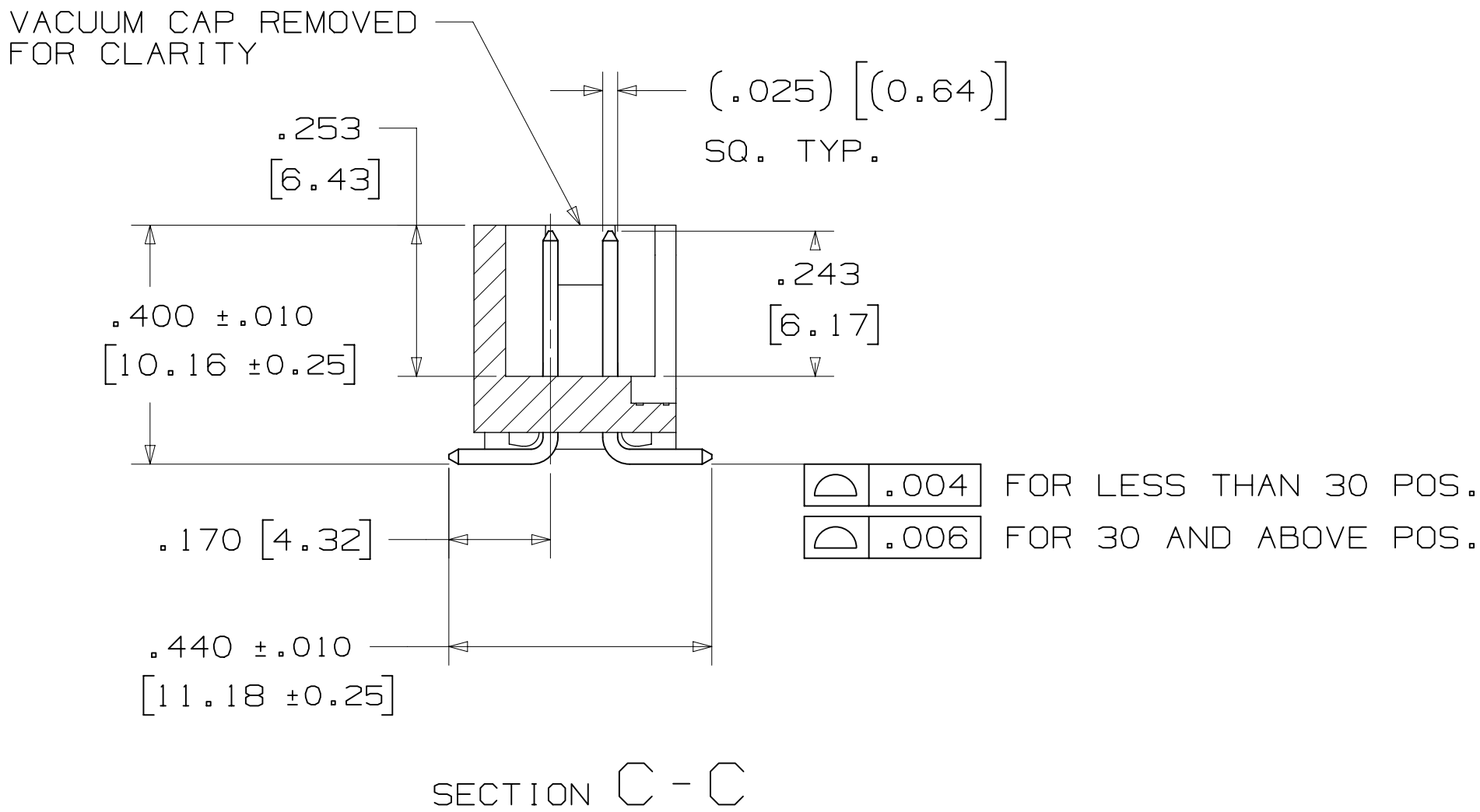


TABLE 1						
PIN QTY.	DIM. "A"	DIM. "B"	DIM. "C"	POLARIZING NOTCHES	TAPE AND REEL PKG CODE	PIN QTY.
06	.588 [14.94]	.508 [12.90]	.200 [5.08]	B	WD (44 MM)	06
08	.688 [17.48]	.608 [15.44]	.300 [7.62]	B	WD (44 MM)	08
10	.788 [20.02]	.708 [17.98]	.400 [10.16]	BC	WD (44 MM)	10
14	.988 [25.10]	.908 [23.06]	.600 [15.24]	BCDE	WD (44 MM)	14
16	1.088 [27.64]	1.008 [25.60]	.700 [17.78]	ABCDE	WD (44 MM)	16
20	1.288 [32.72]	1.208 [30.68]	.900 [22.86]	ABCDE	WE (56 MM)	20
24	1.488 [37.80]	1.408 [35.76]	1.100 [27.94]	ABCDE	WE (56 MM)	24
26	1.588 [40.34]	1.508 [38.30]	1.200 [30.48]	ABCDE	WE (56 MM)	26
30	1.788 [45.42]	1.708 [43.38]	1.400 [35.56]	ABCDE	WF (72 MM)	30
34	1.988 [50.50]	1.908 [48.46]	1.600 [40.64]	ABCDE	WF (72 MM)	34
36	2.088 [53.04]	2.008 [51.00]	1.700 [43.18]	ABCDE	WG (88 MM)	36
40	2.288 [58.12]	2.208 [56.08]	1.900 [48.26]	ABCDE	WG (88 MM)	40
50	2.788 [70.82]	2.708 [68.78]	2.400 [60.96]	ABCDE	WG (88 MM)	50
60	3.288 [83.52]	3.208 [81.48]	2.900 [73.66]	ABCDE	WH (120 MM)	60
64	3.488 [88.60]	3.408 [86.56]	3.100 [78.74]	ABCDE	WH (120 MM)	64

ORDERING INFORMATION
SURFACE MOUNT VERSION

X25XX-6VOC-XX-XX

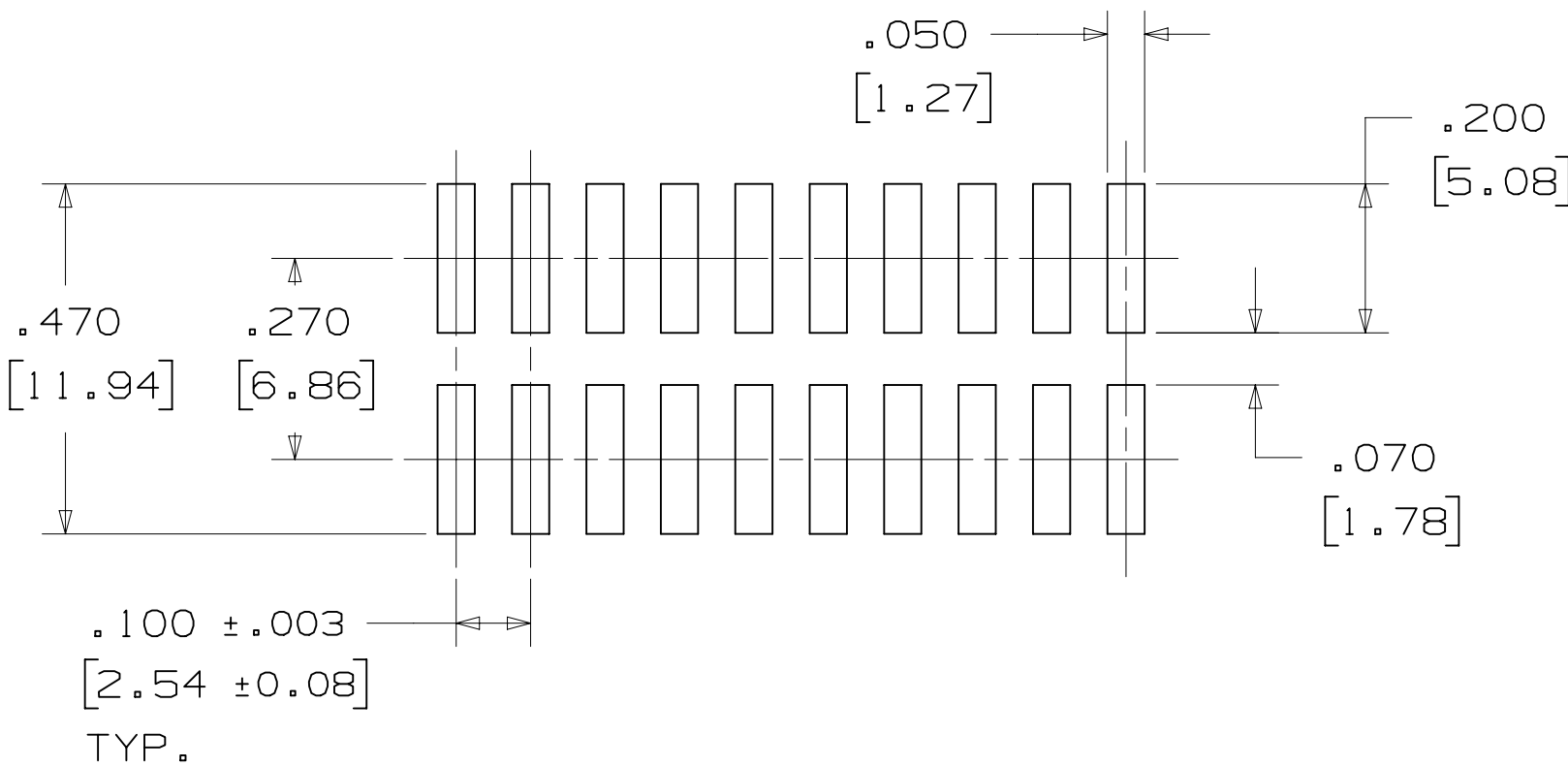
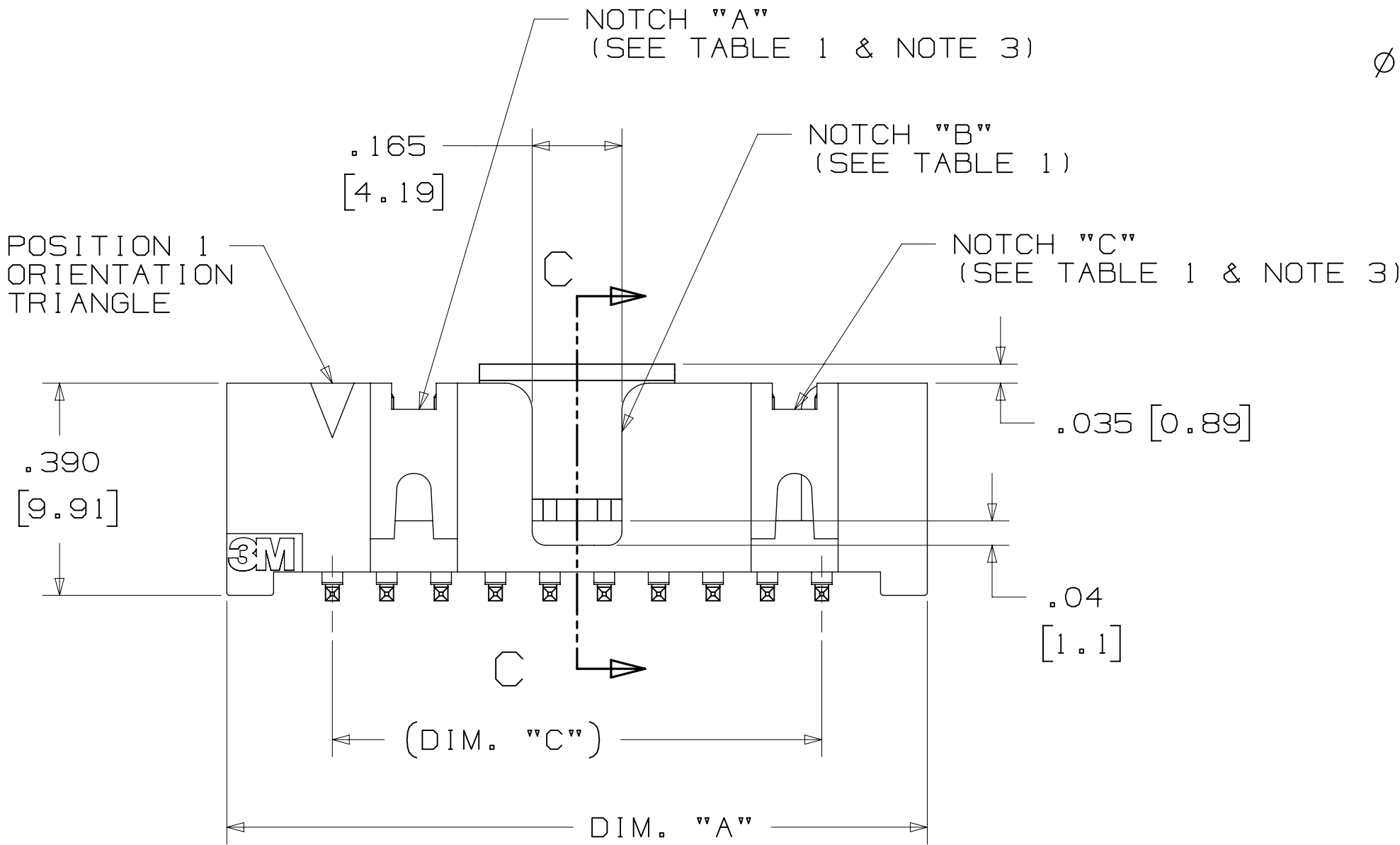
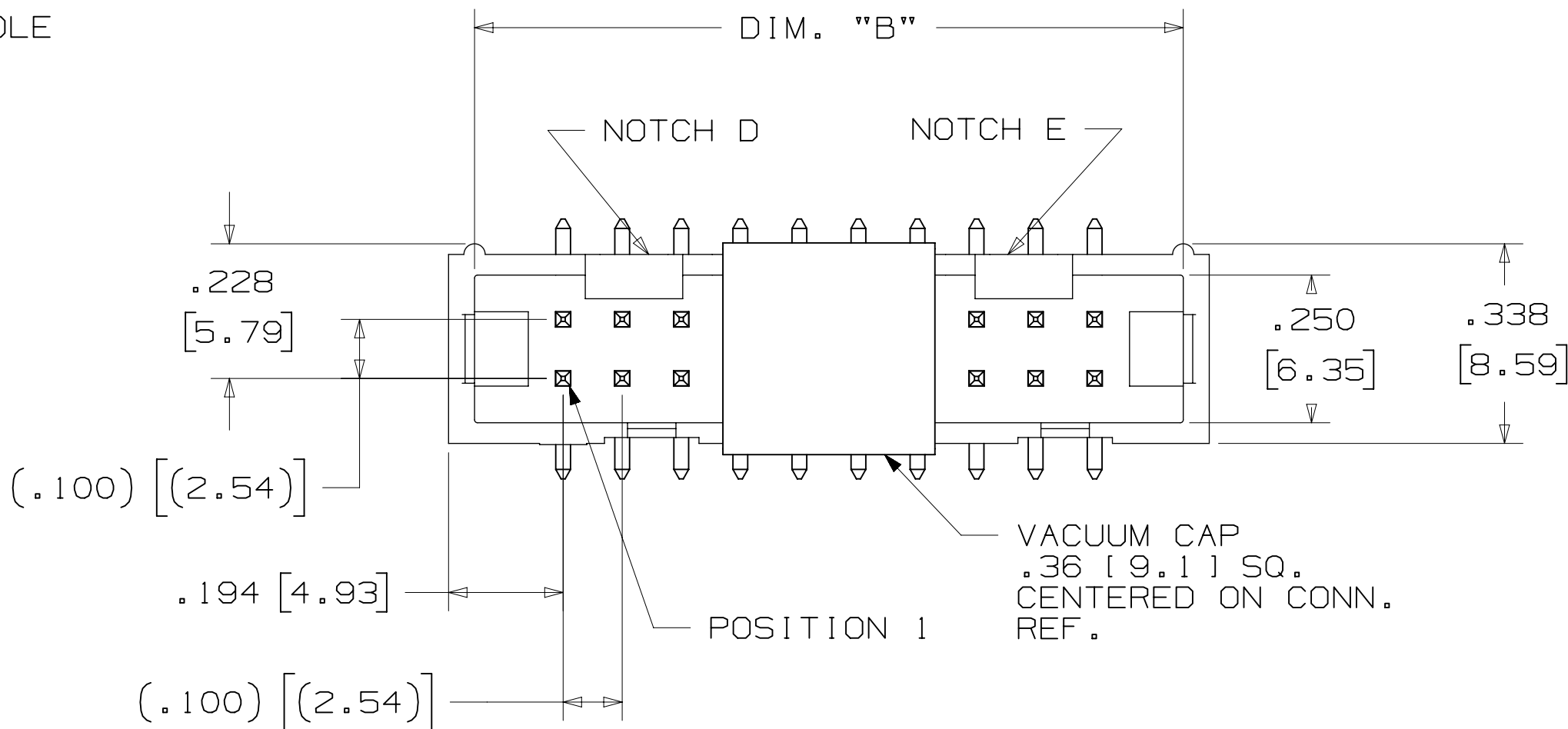
N = RB PLATING REQ'D
D = AR PLATING REQ'D

PIN QUANTITY:
(SEE TABLE 1)

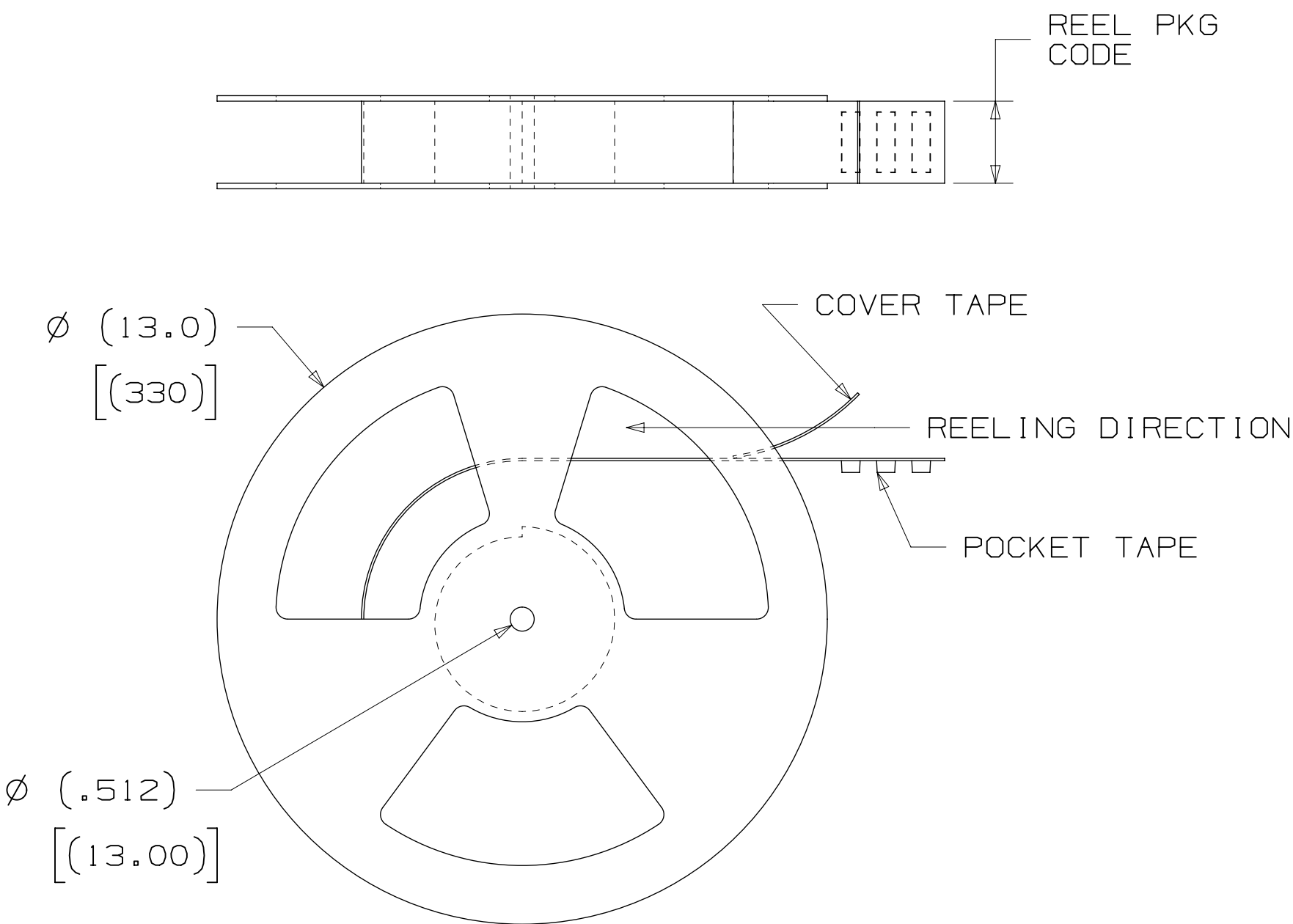
PACKAGING OPTIONS:
WX = TAPE & REEL PACKAGING (SEE TABLE 1)

PLATING:
AR = 10µ" [0.25µm] GOLD AVG.
50µ-150µ [1.27µm-3.81µm] NICKEL UNDERPLATE
40µ-120µ" [1.02µm-3.05µm] MATTE TIN (RIA. E1 & C1 APPLY)

RB = 30µ" [0.76µm] GOLD AVG.
50µ-150µ [1.27µm-3.81µm] NICKEL UNDERPLATE
25µ-200µ" [0.63µm-5.08µm] MATTE TIN (RIA. E1 & C1 APPLY)



RECOMMENDED PAD LAYOUT



DESIGN REFERENCE		NEXT ASSEMBLY		REV	ECO	ISSUE DATE AND DESCRIPTION		DRFT	CHKD
ACCESS CODES				DRFT	CASTIGLIONE	DATE	AUG 11, 2014	MFG	DATE
				CHKD		DATE		APPR	DATE
								R. SCHERER	SEP 05, 2014
DIVISION		DIVISION CODE							
Interconnect Solutions		EMSD							
DO NOT SCALE DRAWING		SCALE 4 1		TOLERANCES EXCEPT AS NOTED					
				INCHES					
				.0		±.1			
				.00		±.01			
				.000		±.005			
				.0000		±.0002			
THIRD ANGLE PROJECTION				MILLIMETERS					
				0		±2			
				.0		±.3			
				.00		±.13			
				.000		±.005			
MAX SURFACE ROUGHNESS				SURFACES					
✓				MARKED ONLY					
				ANGLES					

3M™ FOUR-WALL HEADER, 2500 SERIES

.100" X .100" LOW PROFILE, SURFACE MOUNT, STRAIGHT AND RIGHT ANGLE THROUGH-HOLE

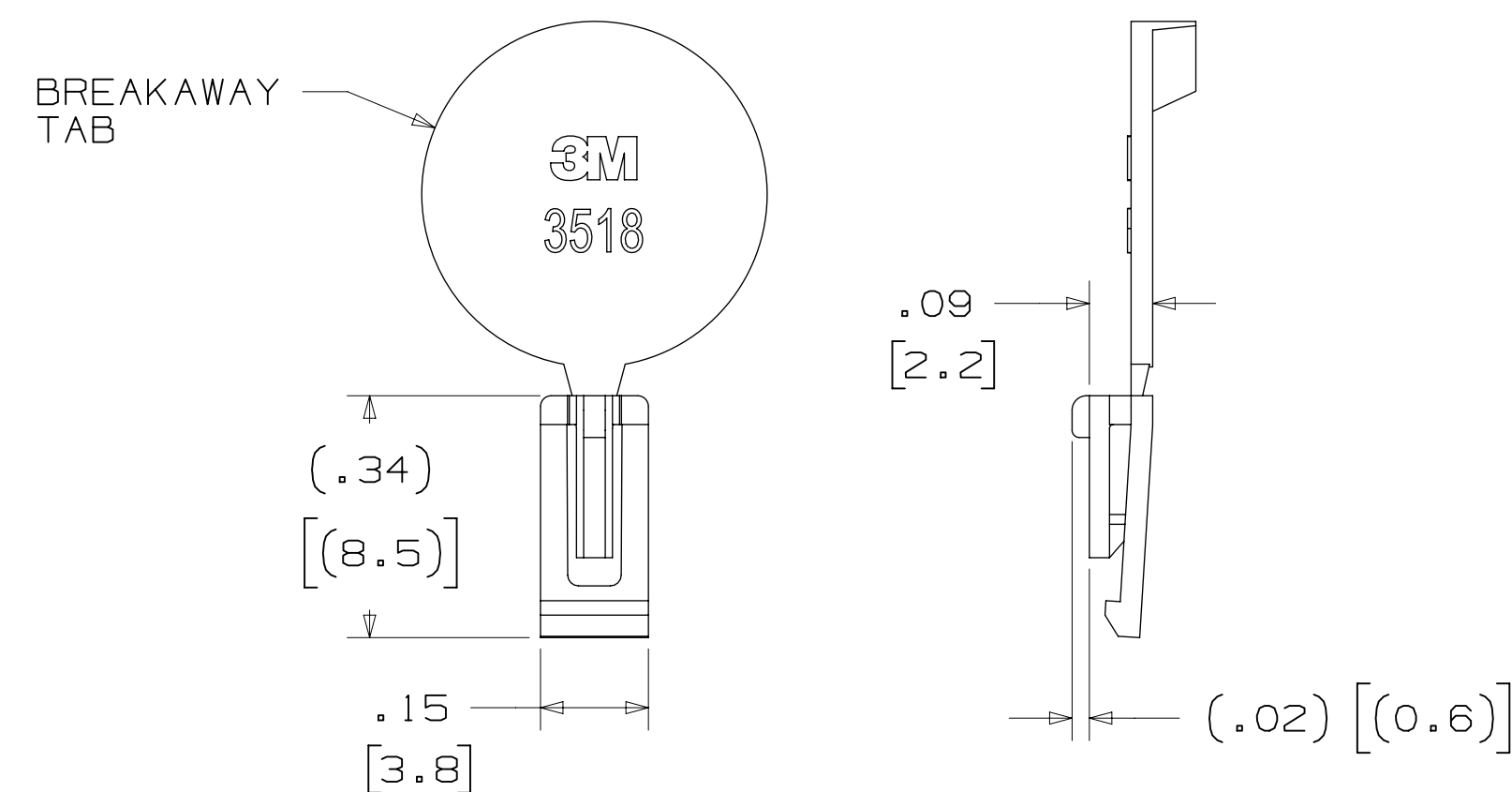
PART CUSTOMIZATION

THIS SPEC SHEET DETAILS OUR STANDARD OFFERING.

3M HAS SEVERAL CAPABILITIES THAT CAN PROVIDE A PART TAILORED TO YOUR SPECIFIC NEEDS. ASK YOUR 3M SALES REPRESENTATIVE OR CUSTOMER SERVICE FOR MORE DETAILS.

- ```
* SELECTIVE PIN REMOVAL (FOR BOARD ASSEMBLY POLARIZATION).
* DIFFERENT PIN LENGTHS.
```

## POLARIZING KEY

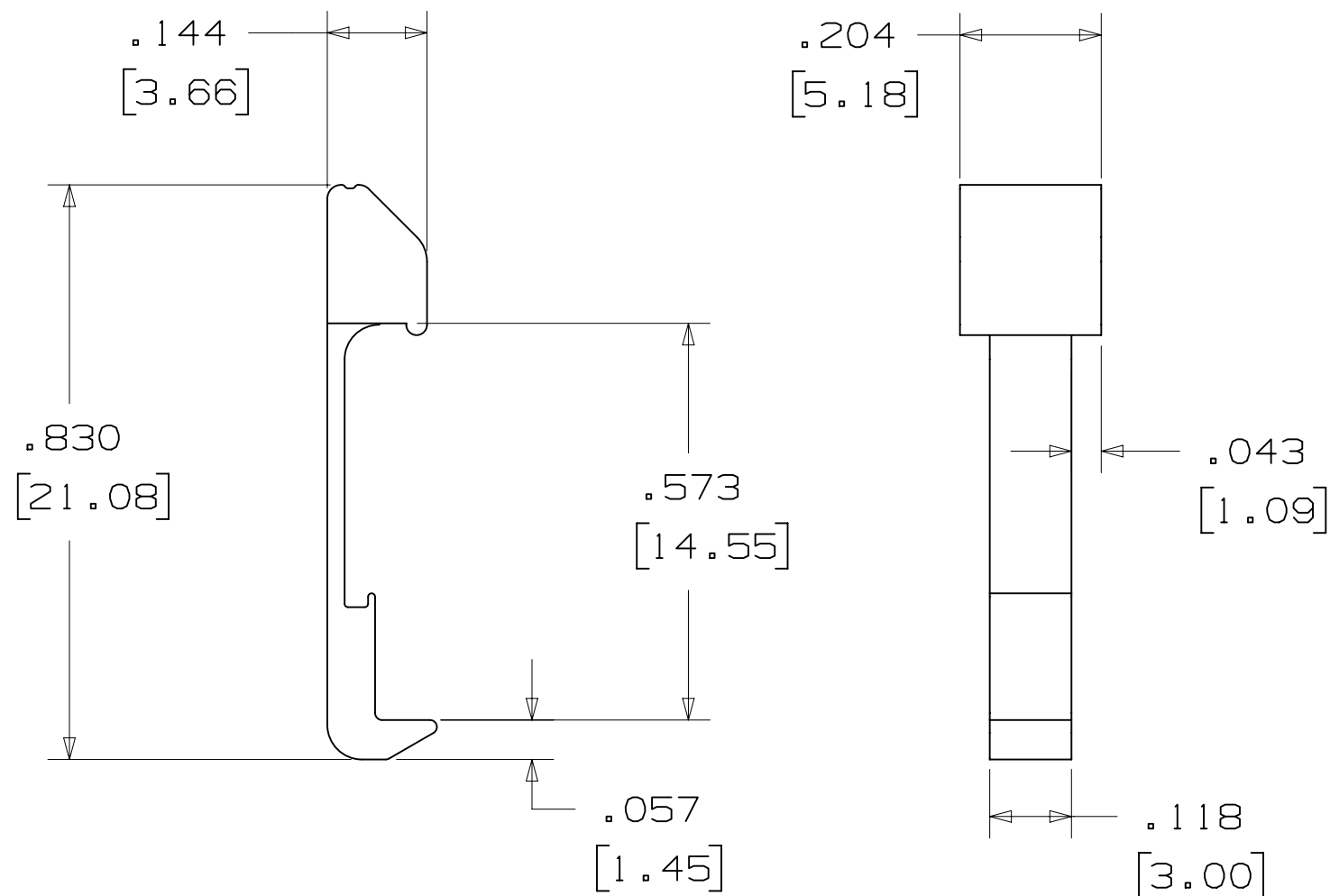


| 3M PART NO. | MATERIAL | COLOR |
|-------------|----------|-------|
| 3518        | PBT      | GRAY  |
| N3518       | LCP      | BLACK |
| D3518       | PBT      | BLACK |

NOTE :

- 1) #2216 B/A SCOTCHWELD CAN BE USED TO ADHERE KEYS.
- 2) SEE INSTRUCTION SHEET 78-9100-7795-3 FOR ASSEMBLY.

# LOW PROFILE LATCH

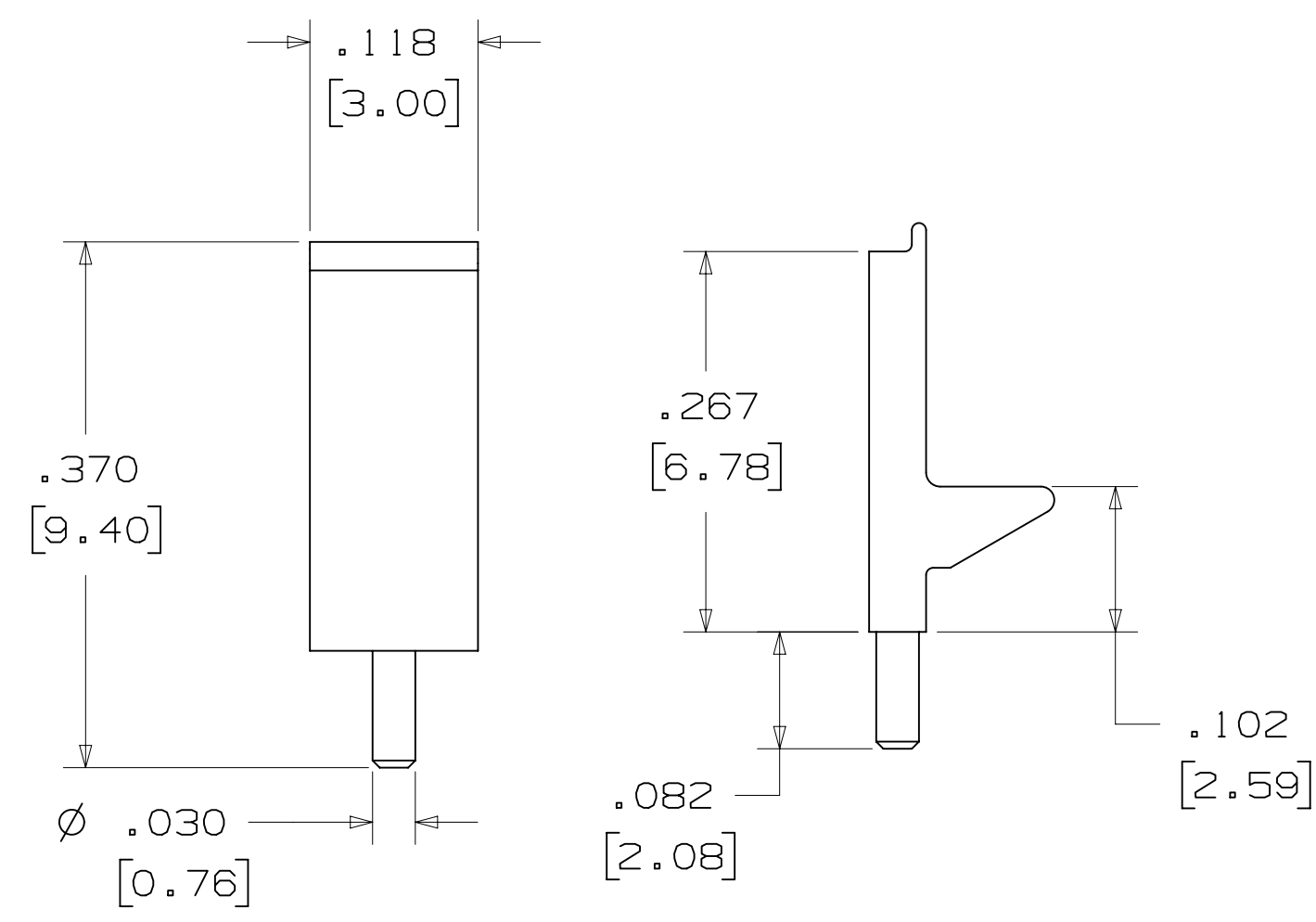


|          |          |       |
|----------|----------|-------|
| PART NO. | MATERIAL | COLOR |
| 3505-33B | NYLON    | BLACK |

NOTE :

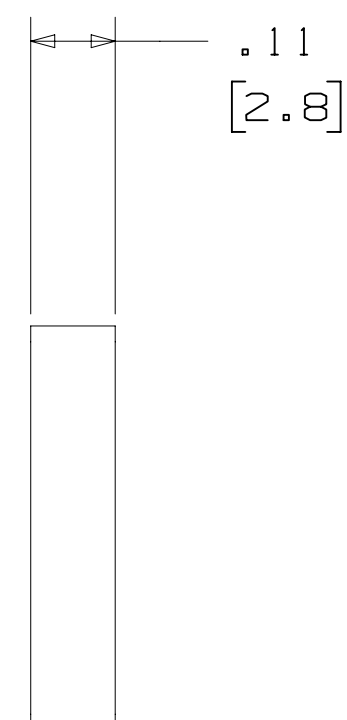
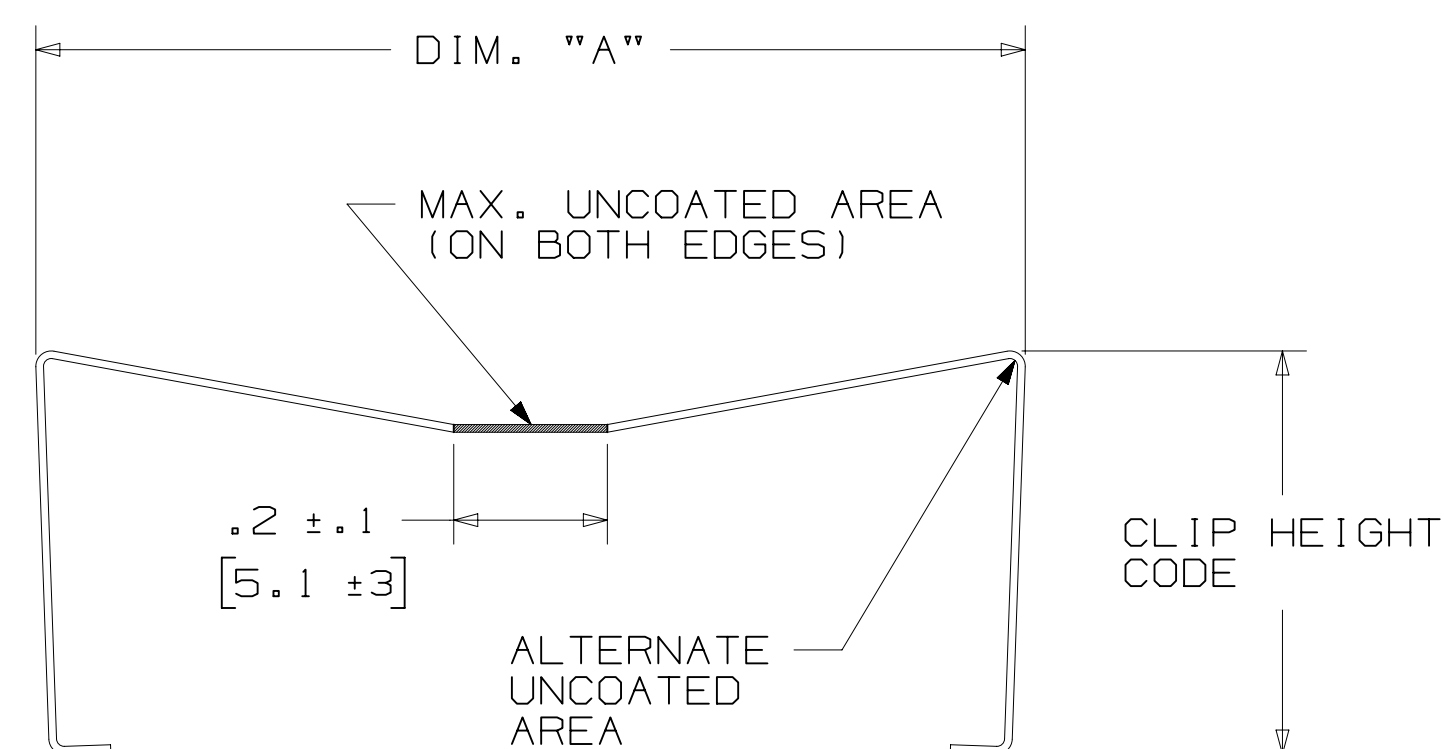
1. LATCHES NOT COMPATIBLE WITH REFLOW SOLDERING.  
ATTACH LATCHES AFTER SOLDERING.
2. LATCHES ARE MEANT FOR RETENTION ONLY.
3. SEE LAST SHEET FOR ASSEMBLY.

## POLARIZING POST



|          |          |       |
|----------|----------|-------|
| PART NO. | MATERIAL | COLOR |
| 3201-3   | PCT      | BLACK |

## SHORT/LONG SOCKET RETAINER CLIP






| PIN | QTY. | DIM. | "A"      |
|-----|------|------|----------|
| 06  |      | N/A  |          |
| 08  |      | N/A  |          |
| 10  |      | .81  | [ 20.6 ] |
| 14  |      | 1.02 | [ 25.9 ] |
| 16  |      | 1.12 | [ 28.4 ] |
| 20  |      | 1.32 | [ 33.5 ] |
| 24  |      | 1.52 | [ 38.7 ] |
| 26  |      | 1.63 | [ 41.4 ] |
| 30  |      | 1.83 | [ 46.4 ] |
| 34  |      | 2.03 | [ 51.6 ] |
| 36  |      | N/A  |          |
| 40  |      | 2.33 | [ 59.2 ] |
| 50  |      | 2.83 | [ 71.9 ] |
| 60  |      | 3.33 | [ 84.6 ] |
| 64  |      | 3.53 | [ 89.7 ] |

3505-8XXX

CLIP HEIGHT CODE \_\_\_\_\_ PIN COUNT \_\_\_\_\_  
 0 = .31 [ 7.9 ] FOR SOCKETS (SEE TABLE)  
     WITHOUT STRAIN RELIEF  
 1 = .53 [ 13.5 ] FOR SOCKETS  
     WITH STRAIN RELIEF

NOTE:

- NOTE: THE FOLLOWING RETAINER CLIPS HAVE BEEN DISCONTINUED:  
3505-8064  
3505-8124  
3505-8150

|                                                                                                                 |  |                 |  |                                                        |  |             |  |                                                                                                                                                                                                                               |  |            |  |              |  |
|-----------------------------------------------------------------------------------------------------------------|--|-----------------|--|--------------------------------------------------------|--|-------------|--|-------------------------------------------------------------------------------------------------------------------------------------------------------------------------------------------------------------------------------|--|------------|--|--------------|--|
| DESIGN REFERENCE                                                                                                |  | NEXT ASSEMBLY   |  | REV                                                    |  | ECO         |  | ISSUE DATE AND DESCRIPTION                                                                                                                                                                                                    |  | DRFT       |  | CHKD         |  |
| ACORN CODES                                                                                                     |  |                 |  | DRFT                                                   |  | CASTIGLIONE |  | DATE                                                                                                                                                                                                                          |  | MFG        |  | DATE         |  |
|                                                                                                                 |  |                 |  | CHKD                                                   |  |             |  | DATE                                                                                                                                                                                                                          |  | APPRV.     |  | DATE         |  |
|                                                                                                                 |  |                 |  |                                                        |  |             |  | AUG 11, 2014                                                                                                                                                                                                                  |  | R. SCHERER |  | SEP 05, 2014 |  |
| DIVISION                                                                                                        |  |                 |  | DIVISION CODE                                          |  |             |  | © 3M COPYRIGHT 2020                                                                                                                                                                                                           |  |            |  |              |  |
| Interconnect Solutions                                                                                          |  |                 |  | EMSD                                                   |  |             |  |                                                                                                                                          |  |            |  |              |  |
| DO NOT SCALE DRAWING                                                                                            |  | SCALE<br>4<br>1 |  | TOLERANCES<br>AS NOTED<br>EXCEPT                       |  |             |  | <p>This document and the information it contains are 3M property and may not be reproduced or further distributed without 3M permission, or used or disclosed other than for 3M authorized purposes. All rights reserved.</p> |  |            |  |              |  |
|                                                                                                                 |  |                 |  | INCHES                                                 |  |             |  | TITLE                                                                                                                                                                                                                         |  |            |  |              |  |
|                            |  |                 |  | .0     .01<br>.00    .01<br>.000   .005<br>.0000 .0002 |  |             |  | HEADER, 4-WALL,<br>LO-PRO, .100 X .100,<br>SMT, STRAIGHT & RA                                                                                                                                                                 |  |            |  |              |  |
| THIRD ANGLE PROJECTION                                                                                          |  |                 |  | MILLIMETERS                                            |  |             |  | CAGE                                                                                                                                                                                                                          |  |            |  |              |  |
|                                                                                                                 |  |                 |  | 0     .2<br>.0     .3<br>.00   .13<br>.00   .005       |  |             |  | SIZE, DRAWING NO.<br><b>D</b> 78-5100-0770-7                                                                                                                                                                                  |  |            |  |              |  |
| MAX. SURFACE ROUGHNESS<br> |  |                 |  | 0     .3<br>.00   .13<br>.00   .005                    |  |             |  | REV.                                                                                                                                                                                                                          |  |            |  |              |  |
| <input checked="" type="checkbox"/> MARKED ONLY<br><input type="checkbox"/> UNMARKED ONLY                       |  |                 |  | ANGLE                                                  |  |             |  | MODEL<br>2500 SERIES                                                                                                                                                                                                          |  |            |  |              |  |
|                                                                                                                 |  |                 |  |                                                        |  |             |  | DET.<br>S. PYES & NO.                                                                                                                                                                                                         |  |            |  |              |  |
|                                                                                                                 |  |                 |  |                                                        |  |             |  | SHT 5 OF 6                                                                                                                                                                                                                    |  |            |  |              |  |

3M™ FOUR-WALL HEADER, 2500 SERIES

.100" X .100" LOW PROFILE, SURFACE MOUNT, STRAIGHT AND RIGHT ANGLE THROUGH-HOLE

**Regulatory:** For regulatory information about this product, visit 3M.com/regs or contact your 3M representative.

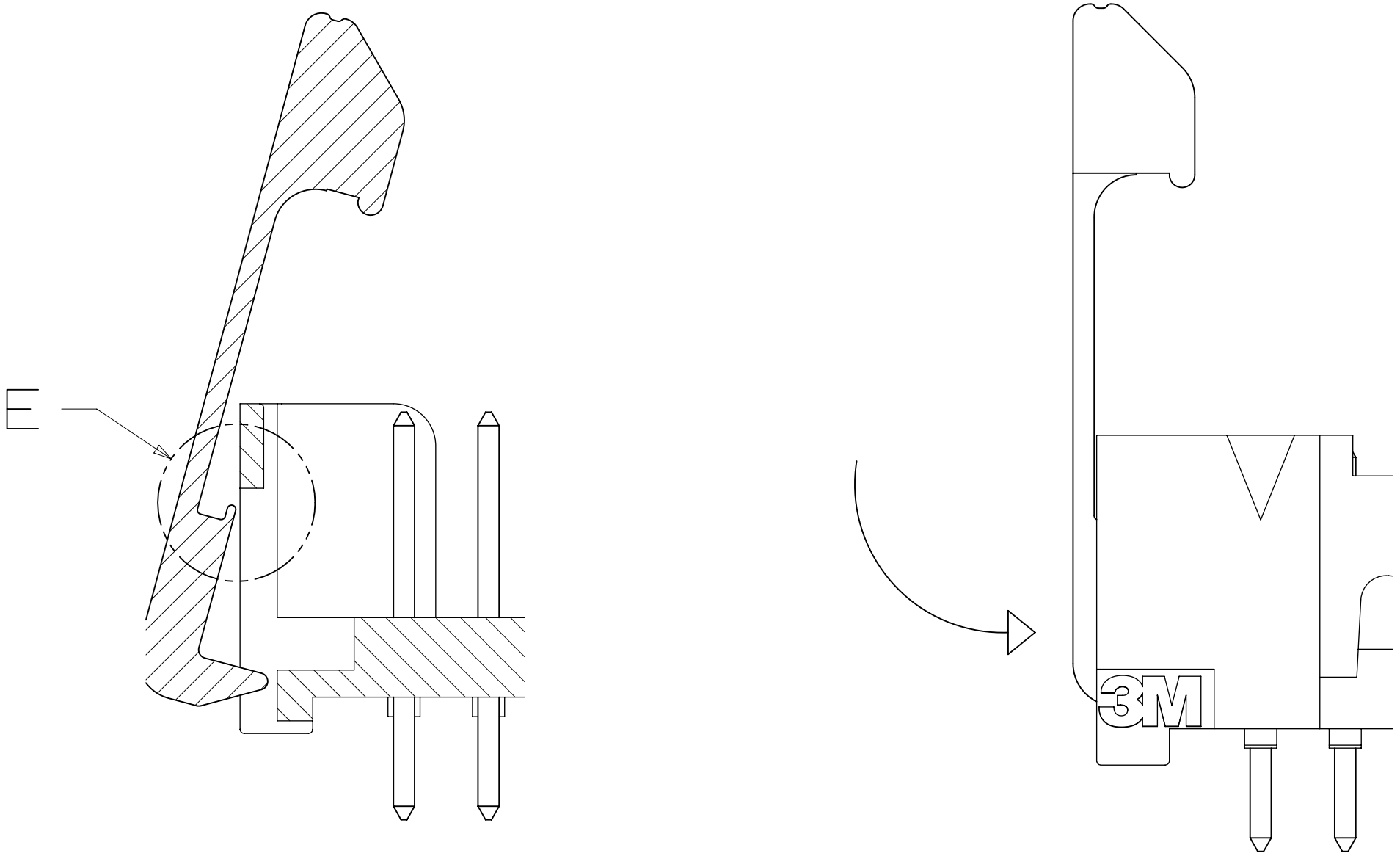
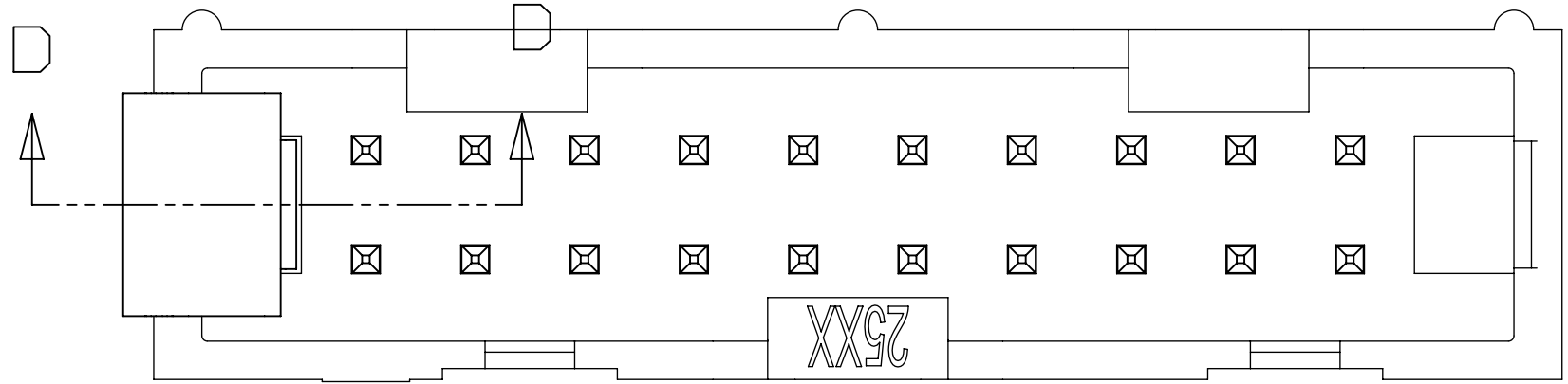
**Technical Information:** The technical information, recommendations and other statements contained in this document are based upon tests or experience that 3M believes are reliable, but the accuracy or completeness of such information is not guaranteed.

**Product Use:** Many factors beyond 3M's control and uniquely within user's control can affect the use and performance of a 3M product in a particular application. Given the variety of factors that can affect the use and performance of a 3M product, user is solely responsible for evaluating the 3M product and determining whether it is fit for a particular purpose and suitable for user's method of application.

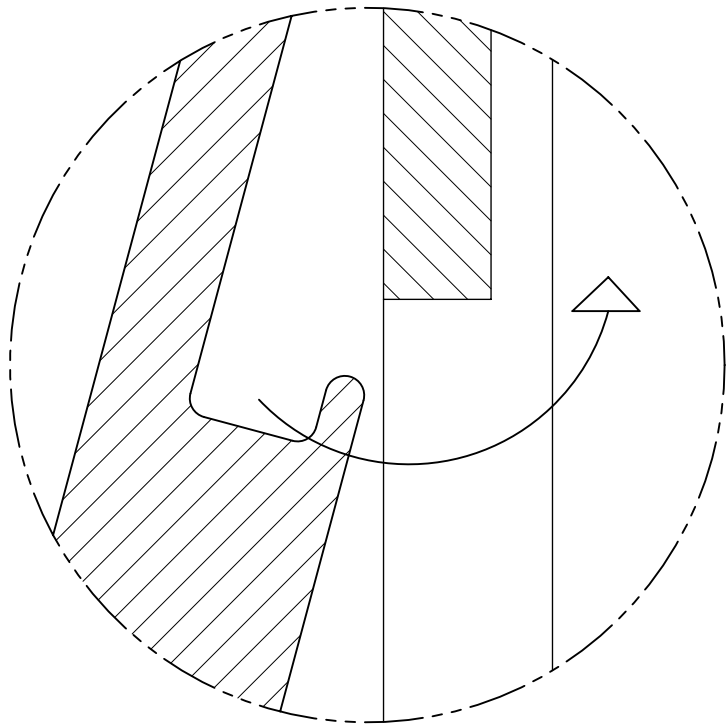
**Warranty, Limited Remedy, and Disclaimer:** Unless an additional warranty is specifically stated on the applicable 3M product packaging or product literature, 3M warrants that each 3M product meets the applicable 3M product specification at the time 3M ships the product. 3M MAKES NO OTHER WARRANTIES OR CONDITIONS, EXPRESS OR IMPLIED, INCLUDING, BUT NOT LIMITED TO, ANY IMPLIED WARRANTY OR CONDITION OF MERCHANTABILITY OR FITNESS FOR A PARTICULAR PURPOSE OR ANY IMPLIED WARRANTY OR CONDITION ARISING OUT OF A COURSE OF DEALING, CUSTOM OR USAGE OR TRADE. If the 3M product does not conform to this warranty, then the sole and exclusive remedy is, at 3M's option, replacement of the 3M product or refund of the purchase price.

**Limitation of Liability:** Except where prohibited by law, 3M will not be liable for any loss or damage arising from the 3M product, whether direct, indirect, special, incidental or consequential, regardless of the legal theory asserted, including warranty, contract, negligence or strict liability.

3M Company  
Electronics Materials Solutions Division  
13011 McCallen Pass, Bldg. C  
Austin, TX 78753-5380  
1-800-225-5373  
www.3M.com/interconnect



SECTION D - D  
SCALE 6x



Detail E  
SCALE 20x

TO ASSEMBLE LATCH:  
PLACE LIP UNDER OPENING IN END WALL.  
PRESS INTO END WALL UNTIL LATCH CLICKS.

|                                 |  |               |  |                            |      |                            |            |              |      |
|---------------------------------|--|---------------|--|----------------------------|------|----------------------------|------------|--------------|------|
| DESIGN REFERENCE                |  | NEXT ASSEMBLY |  | REV                        | ECO  | ISSUE DATE AND DESCRIPTION |            | DRFT         | CHKD |
| XREF CODES                      |  |               |  | DR                         | CHKD | DATE                       | MFG        | DATE         |      |
|                                 |  |               |  | CASTIGLIONE                |      | AUG 11, 2014               |            |              |      |
|                                 |  |               |  |                            |      |                            | R. SCHERER | SEP 05, 2014 |      |
| DIVISION                        |  | DIVISION CODE |  |                            |      |                            |            |              |      |
| Interconnect Solutions          |  | EMSD          |  |                            |      |                            |            |              |      |
| DO NOT SCALE DRAWING            |  | SCALE 6 1     |  | TOLERANCES EXCEPT AS NOTED |      |                            |            |              |      |
|                                 |  |               |  | INCHES                     |      |                            |            |              |      |
|                                 |  |               |  | .0                         |      | .1                         |            |              |      |
|                                 |  |               |  | .00                        |      | .01                        |            |              |      |
|                                 |  |               |  | .000                       |      | .005                       |            |              |      |
|                                 |  |               |  | .0000                      |      | .0002                      |            |              |      |
| THIRD ANGLE PROJECTION          |  |               |  | MILLIMETERS                |      |                            |            |              |      |
|                                 |  |               |  | 0                          |      | 2                          |            |              |      |
| INTERPRET PER ASME Y14.5 - 2018 |  |               |  | .0                         |      | .3                         |            |              |      |
|                                 |  |               |  | .00                        |      | .13                        |            |              |      |
|                                 |  |               |  | .000                       |      | .005                       |            |              |      |
| MAX SURFACE ROUGHNESS           |  |               |  | ANGLES                     |      |                            |            |              |      |
| SURFACES                        |  |               |  |                            |      |                            |            |              |      |
| MARKED ONLY                     |  |               |  |                            |      |                            |            |              |      |
|                                 |  |               |  |                            |      |                            |            |              |      |
|                                 |  |               |  |                            |      |                            |            |              |      |
|                                 |  |               |  |                            |      |                            |            |              |      |
|                                 |  |               |  |                            |      |                            |            |              |      |
|                                 |  |               |  |                            |      |                            |            |              |      |
|                                 |  |               |  |                            |      |                            |            |              |      |
|                                 |  |               |  |                            |      |                            |            |              |      |
|                                 |  |               |  |                            |      |                            |            |              |      |
|                                 |  |               |  |                            |      |                            |            |              |      |
|                                 |  |               |  |                            |      |                            |            |              |      |
|                                 |  |               |  |                            |      |                            |            |              |      |
|                                 |  |               |  |                            |      |                            |            |              |      |
|                                 |  |               |  |                            |      |                            |            |              |      |
|                                 |  |               |  |                            |      |                            |            |              |      |
|                                 |  |               |  |                            |      |                            |            |              |      |
|                                 |  |               |  |                            |      |                            |            |              |      |
|                                 |  |               |  |                            |      |                            |            |              |      |
|                                 |  |               |  |                            |      |                            |            |              |      |
|                                 |  |               |  |                            |      |                            |            |              |      |
|                                 |  |               |  |                            |      |                            |            |              |      |
|                                 |  |               |  |                            |      |                            |            |              |      |
|                                 |  |               |  |                            |      |                            |            |              |      |
|                                 |  |               |  |                            |      |                            |            |              |      |
|                                 |  |               |  |                            |      |                            |            |              |      |
|                                 |  |               |  |                            |      |                            |            |              |      |
|                                 |  |               |  |                            |      |                            |            |              |      |
|                                 |  |               |  |                            |      |                            |            |              |      |
|                                 |  |               |  |                            |      |                            |            |              |      |
|                                 |  |               |  |                            |      |                            |            |              |      |
|                                 |  |               |  |                            |      |                            |            |              |      |
|                                 |  |               |  |                            |      |                            |            |              |      |
|                                 |  |               |  |                            |      |                            |            |              |      |
|                                 |  |               |  |                            |      |                            |            |              |      |
|                                 |  |               |  |                            |      |                            |            |              |      |
|                                 |  |               |  |                            |      |                            |            |              |      |
|                                 |  |               |  |                            |      |                            |            |              |      |
|                                 |  |               |  |                            |      |                            |            |              |      |
|                                 |  |               |  |                            |      |                            |            |              |      |
|                                 |  |               |  |                            |      |                            |            |              |      |
|                                 |  |               |  |                            |      |                            |            |              |      |
|                                 |  |               |  |                            |      |                            |            |              |      |
|                                 |  |               |  |                            |      |                            |            |              |      |
|                                 |  |               |  |                            |      |                            |            |              |      |
|                                 |  |               |  |                            |      |                            |            |              |      |
|                                 |  |               |  |                            |      |                            |            |              |      |
|                                 |  |               |  |                            |      |                            |            |              |      |
|                                 |  |               |  |                            |      |                            |            |              |      |
|                                 |  |               |  |                            |      |                            |            |              |      |
|                                 |  |               |  |                            |      |                            |            |              |      |
|                                 |  |               |  |                            |      |                            |            |              |      |
|                                 |  |               |  |                            |      |                            |            |              |      |
|                                 |  |               |  |                            |      |                            |            |              |      |
|                                 |  |               |  |                            |      |                            |            |              |      |
|                                 |  |               |  |                            |      |                            |            |              |      |
|                                 |  |               |  |                            |      |                            |            |              |      |
|                                 |  |               |  |                            |      |                            |            |              |      |
|                                 |  |               |  |                            |      |                            |            |              |      |
|                                 |  |               |  |                            |      |                            |            |              |      |
|                                 |  |               |  |                            |      |                            |            |              |      |
|                                 |  |               |  |                            |      |                            |            |              |      |
|                                 |  |               |  |                            |      |                            |            |              |      |
|                                 |  |               |  |                            |      |                            |            |              |      |
|                                 |  |               |  |                            |      |                            |            |              |      |
|                                 |  |               |  |                            |      |                            |            |              |      |
|                                 |  |               |  |                            |      |                            |            |              |      |
|                                 |  |               |  |                            |      |                            |            |              |      |
|                                 |  |               |  |                            |      |                            |            |              |      |
|                                 |  |               |  |                            |      |                            |            |              |      |
|                                 |  |               |  |                            |      |                            |            |              |      |
|                                 |  |               |  |                            |      |                            |            |              |      |
|                                 |  |               |  |                            |      |                            |            |              |      |
|                                 |  |               |  |                            |      |                            |            |              |      |
|                                 |  |               |  |                            |      |                            |            |              |      |
|                                 |  |               |  |                            |      |                            |            |              |      |
|                                 |  |               |  |                            |      |                            |            |              |      |
|                                 |  |               |  |                            |      |                            |            |              |      |
|                                 |  |               |  |                            |      |                            |            |              |      |
|                                 |  |               |  |                            |      |                            |            |              |      |
|                                 |  |               |  |                            |      |                            |            |              |      |
|                                 |  |               |  |                            |      |                            |            |              |      |
|                                 |  |               |  |                            |      |                            |            |              |      |
|                                 |  |               |  |                            |      |                            |            |              |      |
|                                 |  |               |  |                            |      |                            |            |              |      |
|                                 |  |               |  |                            |      |                            |            |              |      |
|                                 |  |               |  |                            |      |                            |            |              |      |
|                                 |  |               |  |                            |      |                            |            |              |      |
|                                 |  |               |  |                            |      |                            |            |              |      |
|                                 |  |               |  |                            |      |                            |            |              |      |
|                                 |  |               |  |                            |      |                            |            |              |      |
|                                 |  |               |  |                            |      |                            |            |              |      |
|                                 |  |               |  |                            |      |                            |            |              |      |
|                                 |  |               |  |                            |      |                            |            |              |      |
|                                 |  |               |  |                            |      |                            |            |              |      |
|                                 |  |               |  |                            |      |                            |            |              |      |
|                                 |  |               |  |                            |      |                            |            |              |      |
|                                 |  |               |  |                            |      |                            |            |              |      |
|                                 |  |               |  |                            |      |                            |            |              |      |
|                                 |  |               |  |                            |      |                            |            |              |      |
|                                 |  |               |  |                            |      |                            |            |              |      |
|                                 |  |               |  |                            |      |                            |            |              |      |
|                                 |  |               |  |                            |      |                            |            |              |      |
|                                 |  |               |  |                            |      |                            |            |              |      |
|                                 |  |               |  |                            |      |                            |            |              |      |
|                                 |  |               |  |                            |      |                            |            |              |      |
|                                 |  |               |  |                            |      |                            |            |              |      |
|                                 |  |               |  |                            |      |                            |            |              |      |
|                                 |  |               |  |                            |      |                            |            |              |      |
|                                 |  |               |  |                            |      |                            |            |              |      |

# Mouser Electronics

Authorized Distributor

Click to View Pricing, Inventory, Delivery & Lifecycle Information:

3M:

[3505-8060](#) [3505-8064](#) [3505-8130](#) [3505-8150](#) [3505-8024](#) [N2510-7002UG](#) [N2510-60K2-UB](#) [N2514-60K2-RB](#)  
[N2516-60K2-RB](#) [N2524-5002-UB](#) [N2524-5003-RB](#) [N2526-5003-RB](#) [N2526-60K2-RB](#) [N2540-5003-UB](#) [N2550-50K2-](#)  
[RB](#) [N2520-60K2-RB](#) [N2516-6003-UG](#) [N2526-6002-UG](#) [N2536-5002-RB](#) [N2510-5002-UG](#) [2510-60K2-UG](#) [N2516-](#)  
[6003-UB](#) [N2534-6002-UG](#) [N2510-6V0C-RB-WD](#) [N2520-6V0C-RB-WE](#) [N2560-6V0C-RB-WH](#) [N2564-6V0C-RB-WH](#)  
[3518](#) [3505-8120](#) [3505-8114](#) [3505-8126](#) [3505-8110](#) [3505-8116](#) [3505-8134](#) [3505-8140](#) [3505-8034](#) [3505-8050](#)  
[3505-8020](#) [3505-8026](#) [3505-8040](#) [3505-8016](#) [3505-8010](#) [3505-8014](#) [3505-8030](#) [3201-3](#) [3505-33B](#) [N2514-5002-](#)  
[UG](#) [N2514-5003-UB](#) [N2514-6002-UG](#) [N2520-6003-UG](#) [N2530-5002-UG](#) [N2508-5002-RB](#) [N2508-5003-RB](#) [N2508-](#)  
[6003-RB](#) [N2508-6V0C-RB-WD](#) [N2506-5002RB](#) [N2506-5003RB](#) [N2506-6003RB](#) [N2506-6V0C-RB-WD](#) [N2514-6003-](#)  
[UB](#) [2524-6003-UG](#) [2526-5003-UG](#) [3201-4-1000-BX](#)