

4 3 2 1

D

C

B

A

4 3 2 1

3M™ POWER RIGHT ANGLE MALE CONNECTOR  
FOR ATCA APPLICATIONS

NOTES:

1. MATERIALS AND FINISH:  
INSULATOR: GLASS FILLED POLYESTER (PBT) UL94V-0  
CONTACTS: COPPER ALLOY

2. PLATING:  
-ES  
FINISH: 0.76um MIN Au  
UNDERCOAT: 1.27um MIN Ni  
-G  
FINISH: 0.25um MIN Au  
UNDERCOAT: 1.27um MIN Ni  
-DA  
FINISH: 0.08um MIN Au  
UNDERCOAT: 1.27um MIN Ni

3. ELECTRICAL CHARACTERISTICS  
INSULATION RESISTANCE --- 5 X 10<sup>9</sup> OHMS  
INITIAL CONTACT RESISTANCE  
POWER CONTACT ----- 2.2 MILLIOHMS MAX  
SIGNAL CONTACT ----- 8.5 MILLIOHMS MAX  
VOLTAGE PROOF  
PIN 1-16: 1000 VR.M.S  
PIN 17-34: 2000 VR.M.S  
CURRENT CARRYING CAPACITY  
SIGNAL PINS: 1A  
POWER PINS: 16A

4. SEE THE REGULATORY INFORMATION APPENDIX (RIA) IN THE "RoHS COMPLIANCE" SECTION OF: WWW.3MCONNECTOR.COM FOR COMPLIANCE INFORMATION (RIA E1 & C1 APPLY).

5. REFERENCE DOCUMENT: 78-9101-3345-9

6. IN THE EVENT OF CONFLICT BETWEEN THIS DATA AND THAT CONTAINED IN THE PRODUCT SPEC., THE PRODUCT SPEC. TAKES PRECEDENT.

7. PART No.:

PART DESCRIPTION	CONTACT POSITIONS
2P01-0100-XX	34
2P01-0200-XX	30, EXCEPT POSITIONS 1-4
2P01-0300-XX	22, EXCEPT POSITIONS 1-4, 17-24

-XX IS PLATING TYPE

8. FOR MATING PRODUCT USE:  
2P02-0X00-XX ATCA POWER BACKPLANE FEMALE CONNECTOR

9. PCB THICKNESS: MINIMUM:2.00MM  
MAXIMUM:5.00MM

11.30  
PIN 33

6.10  
PINS 5-24

20.90 MAX

1.50

8.80  
PIN 34

4.10±0.25

3.78  
PINS 27 & 32

14.82

14.30  
PINS 25-31 EXCEPT 27

18.65

41.30 MAX

17.50

28.60

46.10 MAX

CONTACT 27 DATUM PLANE

DESIGN REFERENCE

NEXT ASSEMBLY

REV

ECO

ISSUE DATE AND DESCRIPTION

DRFT

CHKD

DISTRIBUTION CODES

DATE

DATE

DATE

DATE

DIVISION

DIVISION CODE

DO NOT SCALE DRAWING

SCALE

TOLERANCES EXCEPT AS NOTED

INCHES

MILLIMETERS

THIRD ANGLE PROJECTION

INTERPRET PER ASME Y14.5 - 1994

MAX SURFACE ROUGHNESS

ALL SURFACES

MARKED ONLY

ANGLES ± 1°

3M

3M Center St. Paul, MN 55144

© 3M COPYRIGHT  
This document is the copyrighted property of the 3M Company and may not be reproduced without 3M written permission or used for other than 3M authorized purposes.

TITLE

2P01-0X00-XX  
ATCA POWER RIGHT ANGLE MALE CONNECTOR

CAGE NUMBER

SIZE

DRAWING NO.

REV.

878-5100-2376-1

MODEL

DET. LISTS

YES

NO

SHT 1 OF 2

1 MATERIALS AND FINISH:  
INSULATOR: GLASS FILLED POLYESTER (PBT) UL94V-0  
CONTACTS: COPPER ALLOY

-ES  
FINISH: 0.76um MIN Au  
UNDERCOAT: 1.27um MIN Ni

-G  
FINISH: 0.25um MIN Au  
UNDERCOAT: 1.27um MIN Ni

-DA  
FINISH: 0.08um MIN Au  
UNDERCOAT: 1.27um MIN Ni

```

INSULATION RESISTANCE --- 5 x 109 OHMS
INITIAL CONTACT RESISTANCE
POWER CONTACT ----- 2.2 MILLIOHMS MAX
SIGNAL CONTACT ----- 8.5 MILLIOHMS MAX
VOLTAGE PROOF
PIN 1-16:      1000 VR.M.S
PIN 17-34:     2000 VR.M.S
CURRENT CARRYING CAPACITY
SIGNAL PINS:    1A
POWER PINS:     16A


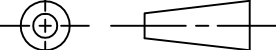
```

5. REFERENCE DOCUMENT: 78-9101-3345-9

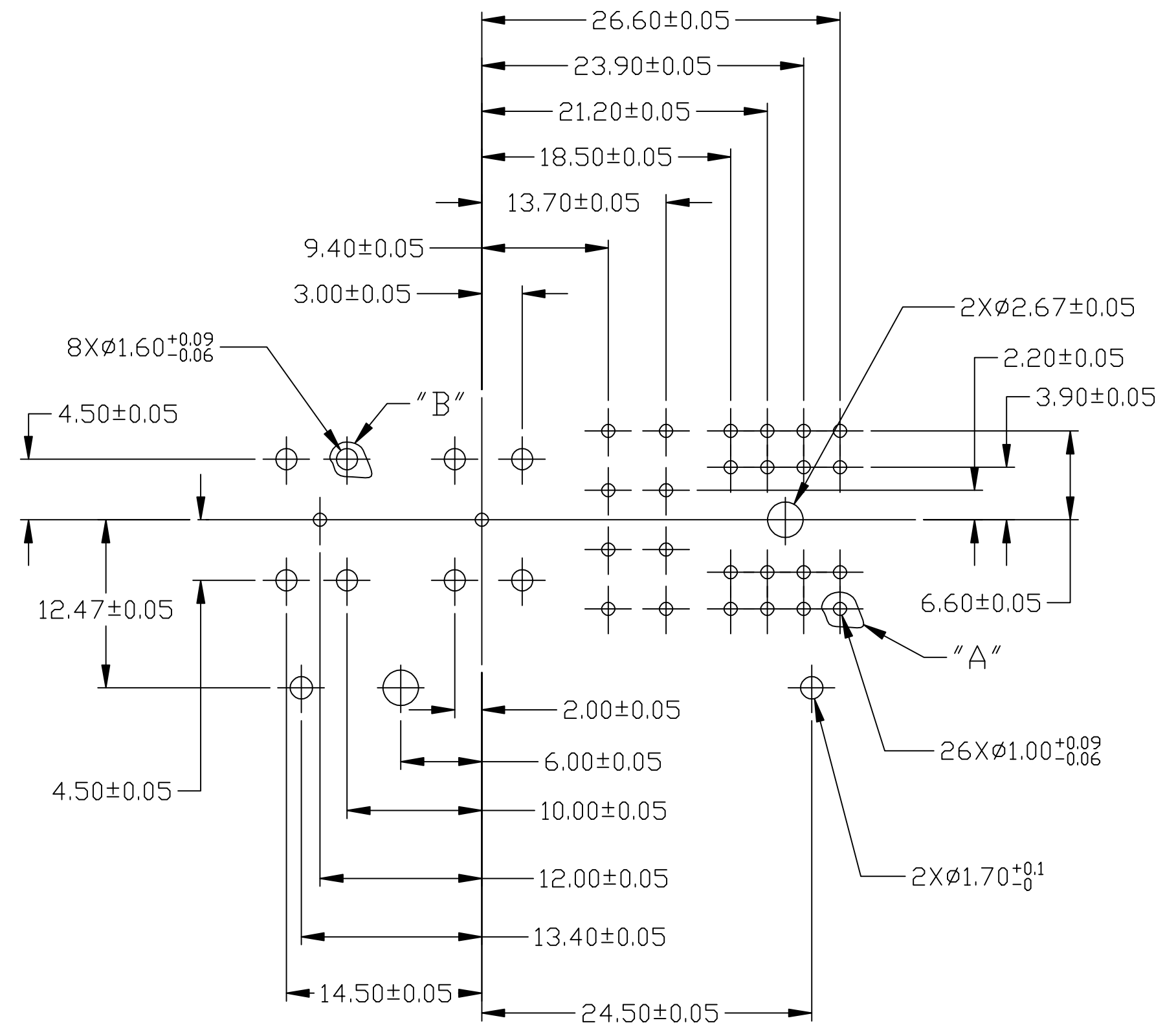
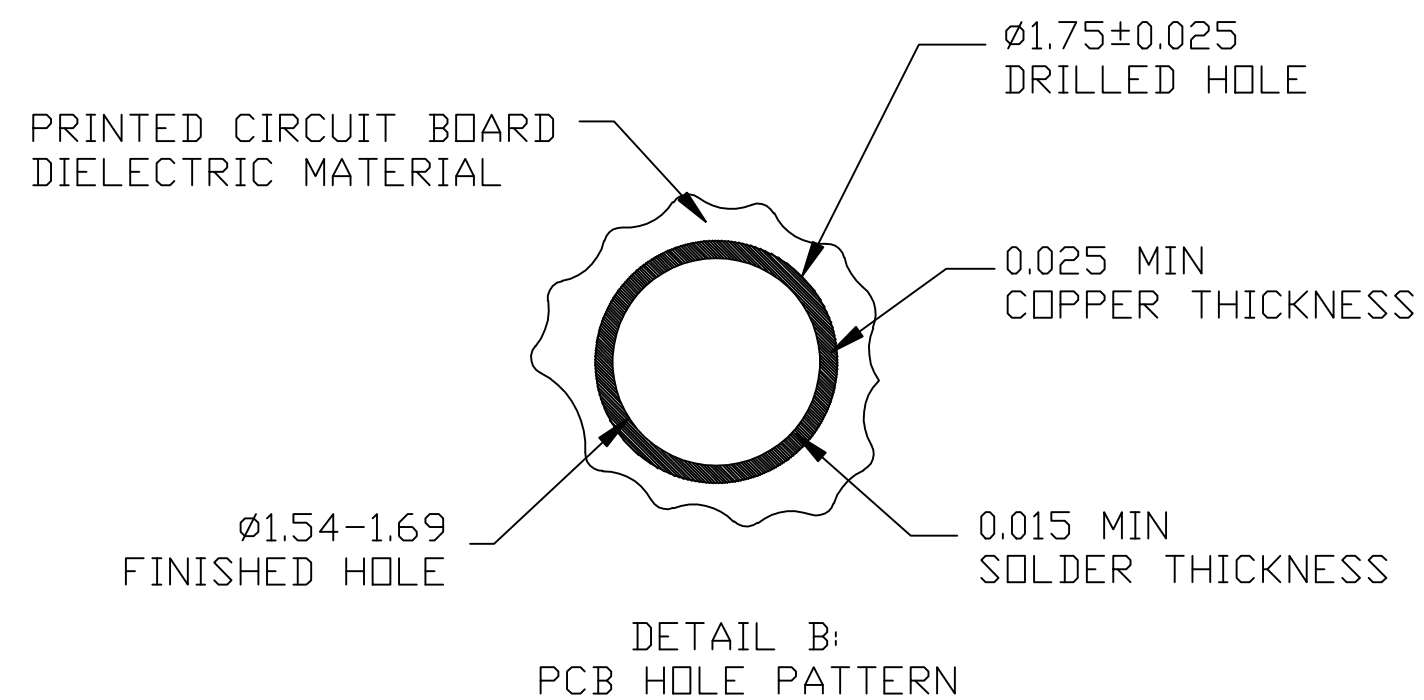
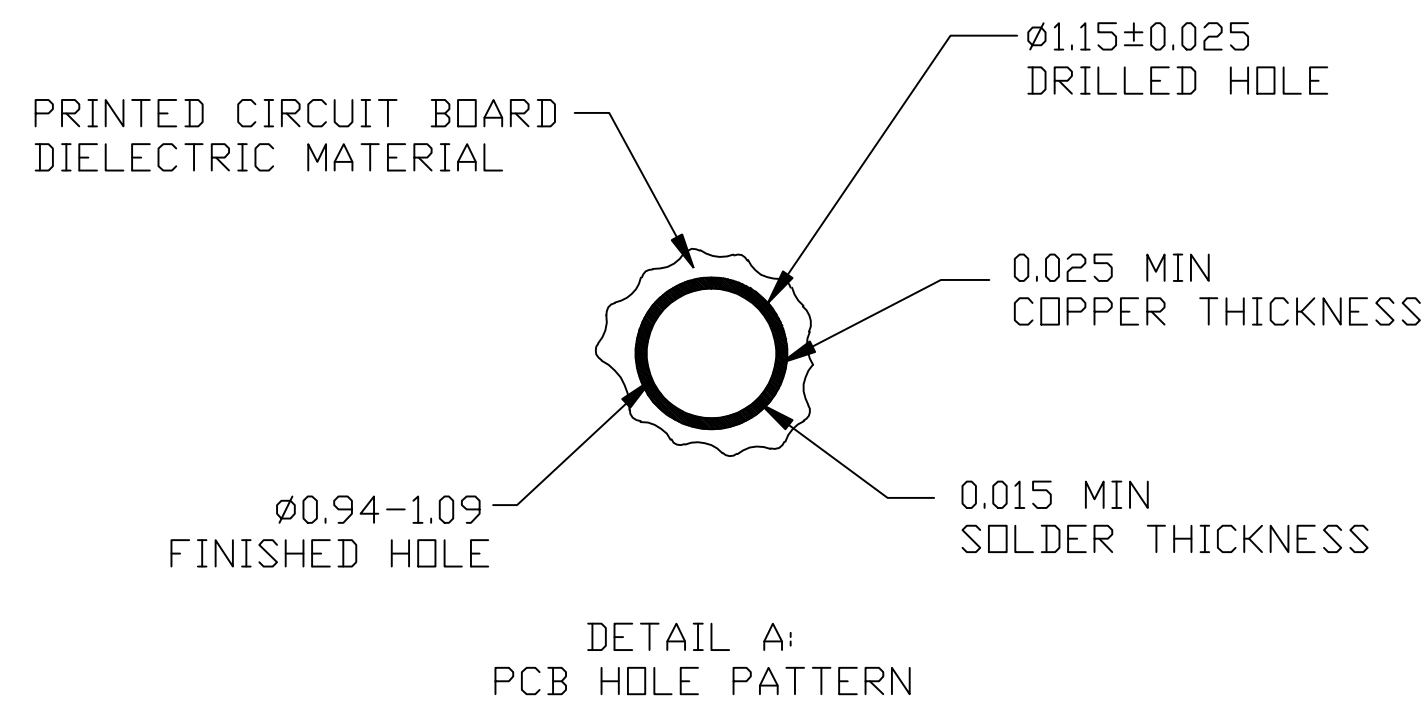
7. PART No.:

-XX IS PLATING TYPE

2P02-0X00-XX ATCA POWER BACKPLANE  
FEMALE CONNECTOR

DESIGN REFERENCE				NEXT ASSEMBLY				REV		ECO		ISSUE DATE AND DESCRIPTION				DRFT		CHKD	
DISTRIBUTION CODES								DRFT		ML		DATE 1/10/11		MFG		DATE			
								CHKD		TS		DATE 1/10/11		APPL		DATE			
DIVISION						DIVISION CODE						 <div> <div>3M Center</div> <div>St. Paul,</div> <div>MN 55144</div> </div> <div> <p>© 3M COPYRIGHT</p> <p>This document is the copyrighted property of the 3M Company and may not be reproduced without 3M written permission or used for other than 3M authorized purposes.</p> </div>							
DO NOT SCALE DRAWING		SCALE		TOLERANCES EXCEPT AS NOTED				<div> <div>TITLE</div> <div>2P01-0X00-XX</div> <div>ATCA POWER RIGHT ANGLE</div> <div>MALE CONNECTOR</div> </div>											
				<div> <div>INCHES</div> <div>.0 ± *</div> <div>.00 ± *</div> <div>.000 ± *</div> <div>.0000 ± *</div> </div>				<div> <div>THIRD ANGLE PROJECTION</div> </div>											
<div> <div>INTERPRET PER ASME Y14.5 - 1994</div> </div>				<div> <div>MILLIMETERS</div> <div>0 ± *</div> <div>.0 ± .30</div> <div>.00 ± .020</div> <div>.000 ± .010</div> </div>				<div> <div>CAGE NUMBER</div> <div>SIZE</div> <div>DRAWING NO.</div> </div>								<div> <div>REV.</div> </div>			
<div> <div>MAX SURFACE ROUGHNESS</div> <div> <input type="checkbox"/> ALL SURFACES           <input checked="" type="checkbox"/> MARKED ONLY         </div> </div>				<div> <div>ANGLES ± 1°</div> </div>				<div> <div>MODEL</div> </div>								<div> <div>DET. LISTS</div> <div> <input type="checkbox"/> YES <input checked="" type="checkbox"/> NO           </div> <div>SHT 1 OF 2</div> </div>			
								<div> <div>68-5100-2376-1</div> <div>A</div> </div>											

# 3M™ POWER RIGHT ANGLE MALE CONNECTOR FOR ATCA APPLICATIONS



RECOMMENDED PC BOARD REQUIREMENTS  
(COMPONENT SIDE OF BOARD SHOWN)

DESIGN REFERENCE		NEXT ASSEMBLY		REV	ECO	ISSUE DATE AND DESCRIPTION		DRFT	CHKD
DISTRIBUTION CODES				DRFT	ML	DATE 1/10/11	MFG	DATE	
				CHKD	TS	DATE 1/10/11	APPL	DATE	
DIVISION		DIVISION CODE		3M		3M Center St. Paul, MN 55144			
DO NOT SCALE DRAWING		SCALE		TOLERANCES EXCEPT AS NOTED		© 3M COPYRIGHT This document is the copyrighted property of the 3M Company and may not be reproduced without 3M written permission or used for other than 3M authorized purposes.			
THIRD ANGLE PROJECTION		INCHES 0 ± *		MILLIMETERS 0 ± *		TITLE 2P01-0X00-XX ATCA POWER RIGHT ANGLE MALE CONNECTOR			
INTERPRET PER ASME Y14.5 - 1994		.00 ± *		.000 ± *		CAGE NUMBER C			
MAX SURFACE ROUGHNESS □ ALL SURFACES ✓ □ MARKED ONLY		.00 ± 0.30 .000 ± 0.20 .000 ± 0.10		ANGLES ± 1°		DRAWING NO. 78-5100-2376-1		REV. A	
				MODEL		DET. LISTS □ YES □ NO		SHT 2 OF 2	

# Mouser Electronics

Authorized Distributor

Click to View Pricing, Inventory, Delivery & Lifecycle Information:

[3M:](#)

[2P01-0200-ES](#)