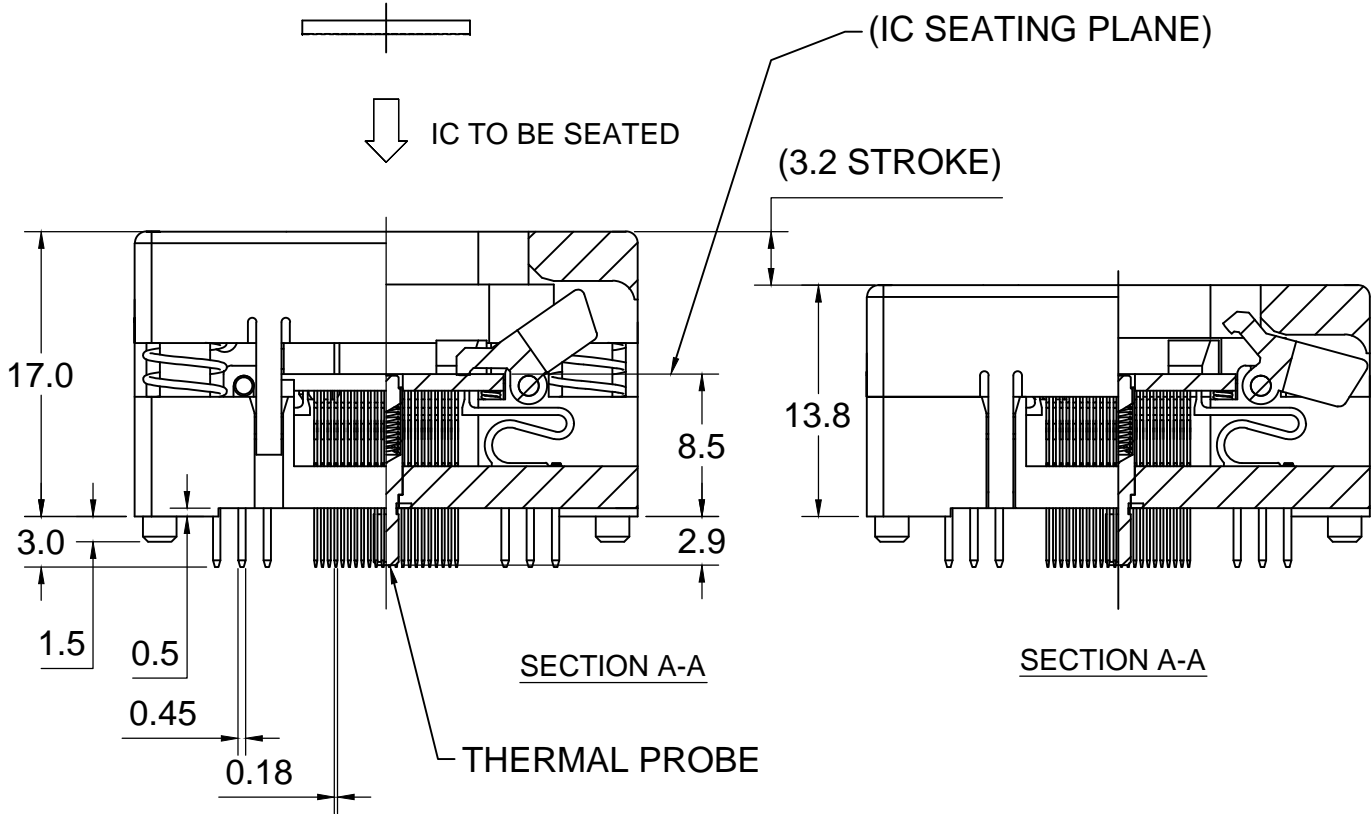
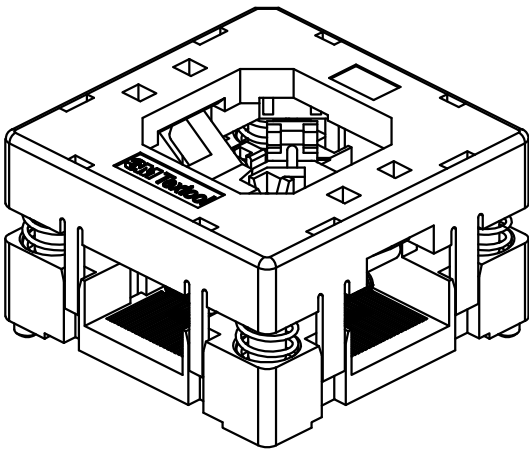
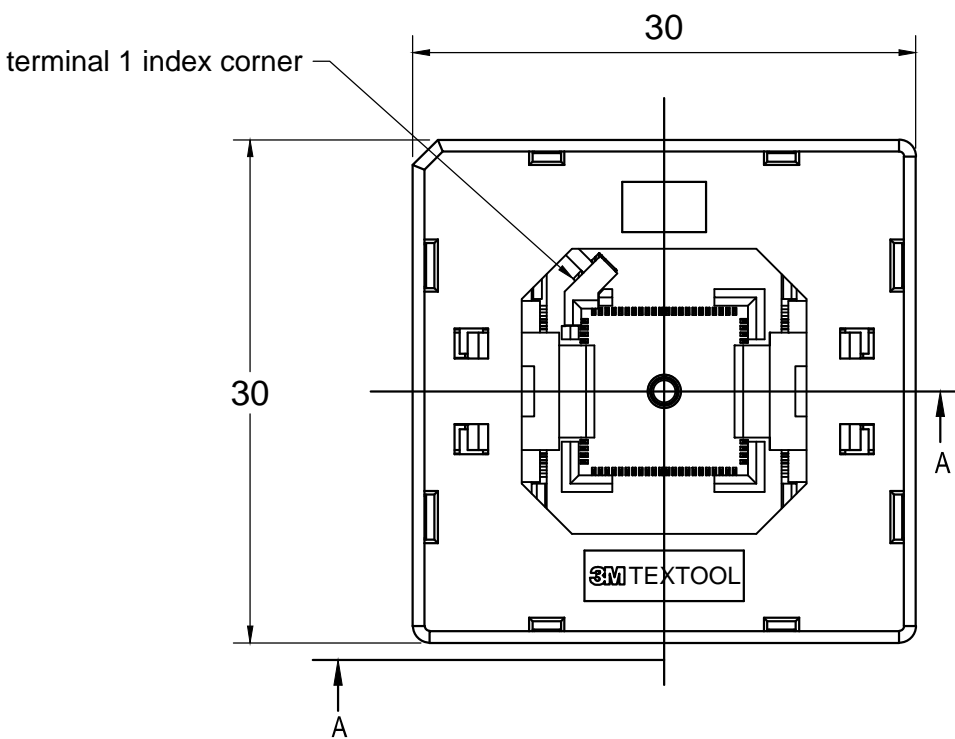


3M™ TEXTTOOL™ OPEN-TOP SOCKETS FOR QFN APPLICATIONS

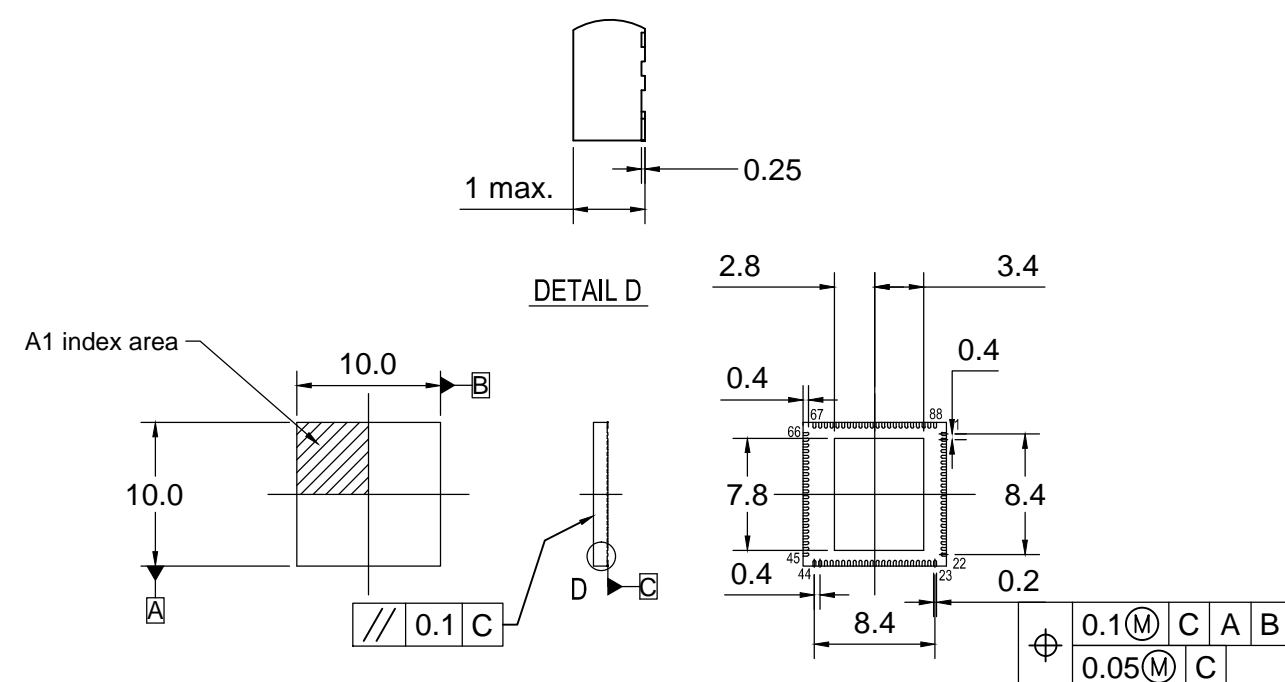


NOTES:


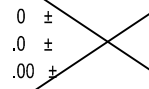
1. MATERIALS:
- | | | |
|--------------|---------------|---------------|
| SPRINGS | SS | |
| CONTACTS | Be Cu | PLATING : Au |
| IC GUIDES | PES | COLOR : BLACK |
| PRESSURE PAD | PES | COLOR : BLACK |
| COVER | PPS or equiv. | COLOR : BLACK |
| BASE | PES | COLOR : BLACK |
2. SEE THE REGULATORY INFORMATION APPENDIX (RIA) IN THE "RoHS COMPLIANCE" SECTION WWW.3MCONNECTOR.COM FOR COMPLIANCE INFORMATION (RIA E1 & C1 APPLY).
3. FOR PRODUCT SPECIFICATIONS AND WARRANTY INFORMATION SEE: WWW.3MCONNECTOR.COM PN 288-4205-01

DESIGN REFERENCE				NEXT ASSEMBLY				A		37213		INITIAL RELEASE				ARM			
DISTRIBUTION CODES								REV		ECO		ISSUE DATE AND DESCRIPTION				DRFT		CHKD	
								DRFT				DATE		MFG		DATE			
								CHKD				DATE		APPVL		DATE			
DIVISION				DIVISION CODE				<div>3M</div> <div>3M Center St. Paul, MN 55144</div>		© 3M COPYRIGHT 2012 This document is the copyrighted property of the 3M Company and may not be reproduced without 3M written permission or used for other than 3M authorized purposes.									
DO NOT SCALE DRAWING		SCALE 5 1		TOLERANCES EXCEPT AS NOTED															
		INCHES																	
		MILLIMETERS																	
THIRD ANGLE PROJECTION				.0 ± .1 .00 ± .02 .000 ± .005 .0000 ± .0002		TITLE		QFN TEST SOCKET, 0.4mm, 88 POS, EVEN ROW, 10X10 PKG, WITH TP											
INTERPRET PER ASME Y14.5 - 1994								CAGE NUMBER		SIZE		DRAWING NO.				REV.			
MAX SURFACE ROUGHNESS								C				78-5100-2464-5				A			
125 <input type="checkbox"/> ALL SURFACES <input checked="" type="checkbox"/> MARKED ONLY								MODEL		TEXTTOOL - QFN		DET. LISTS		<input type="checkbox"/> YES <input checked="" type="checkbox"/> NO		SHT 1 OF 2			
				ANGLES ± 1°															

A



VISIT US AT [HTTP:// WWW.3MCONNECTORS.COM](http://www.3mconnectors.com)

DESIGN REFERENCE				NEXT ASSEMBLY				REV		ECO		ISSUE DATE AND DESCRIPTION				DRFT		CHKD			
DISTRIBUTION CODES								DRFT		DATE				MFG				DATE			
								CHKD		DATE				APPVL				DATE			
DIVISION				DIVISION CODE				<div>3M</div> <div>3M Center St. Paul, MN 55144</div>				© 3M COPYRIGHT 2012 This document is the copyrighted property of the 3M Company and may not be reproduced without 3M written permission or used for other than 3M authorized purposes.									
DO NOT SCALE DRAWING		SCALE 5 1		TOLERANCES EXCEPT AS NOTED																	
<div></div> <div>THIRD ANGLE PROJECTION</div>				INCHES				<div>TITLE</div> <div>QFN TEST SOCKET, 0.4mm, 88 POS, EVEN ROW, 10X10 PKG, WITH TP</div>													
				.0 ± .1 .00 ± .02 .000 ± .005 .0000 ± .0002																	
INTERPRET PER ASME Y14.5 - 1994				MILLIMETERS																	
MAX SURFACE ROUGHNESS				<div></div>				CAGE NUMBER		SIZE		DRAWING NO.				REV.					
125 ✓ <input type="checkbox"/> ALL SURFACES <input checked="" type="checkbox"/> MARKED ONLY								C		78-5100-2464-5		A									
				ANGLES ± 1°				MODEL				TEXT - TOOL - QFN				DET. JUSTS <input type="checkbox"/> YES <input checked="" type="checkbox"/> NO					
																SHT 2 OF 2					

Mouser Electronics

Authorized Distributor

Click to View Pricing, Inventory, Delivery & Lifecycle Information:

3M:

[288-4205-01](#)