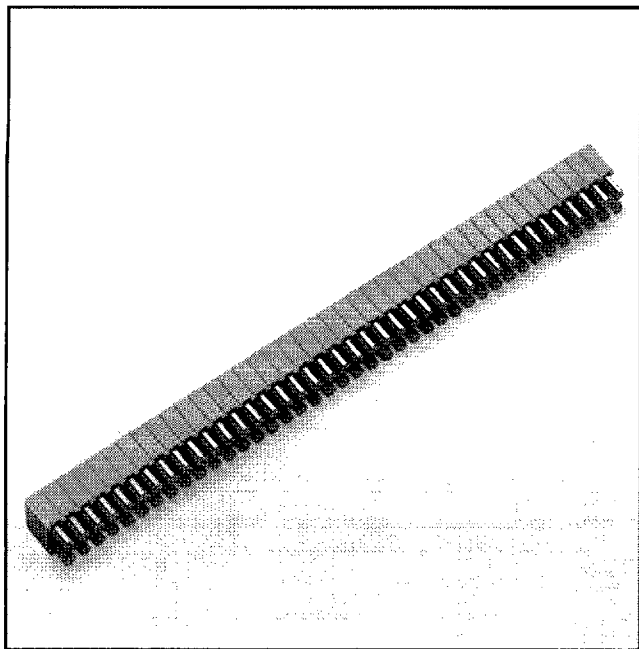


.100" x 100" Thru Board Socket

Straight Solder Tails

929 Series



- Two row socket
- Single hole board preparation simplifies board layout
- No solder mask preparation speeds manufacturing assembly
- Top mounting allows single pass for wave soldering

9

TS-0310-11
Sheet 1 of 2

Physical

Insulation

Material: Glass Filled Polyester (PET)
Flammability: UL 94V-0
Color: Gray

Contact

Material: Phosphor Bronze
Plating
Underplating & U-Slot: 50 μ " [1.27 μ m] Nickel — QQ-N-290A, Class 2
Wiping Area Options: See Ordering Information
Solder Tails: 100 μ " [2.54 μ m] Tin Lead — MIL-P-81728

Electrical

Current Rating: 2 A
Insulation Resistance: $> 1 \times 10^9 \Omega$ 500 VDC
Withstanding Voltage: 1000 Vrms at Sea Level

Environmental

Temperature Rating: -55°C to 105°C

UL File No.: E68080
CSA File No.: LR 89866

3M Electronic Products Division

9005413 0000027 232

6801 River Place Blvd.
Austin, TX 78726-9000

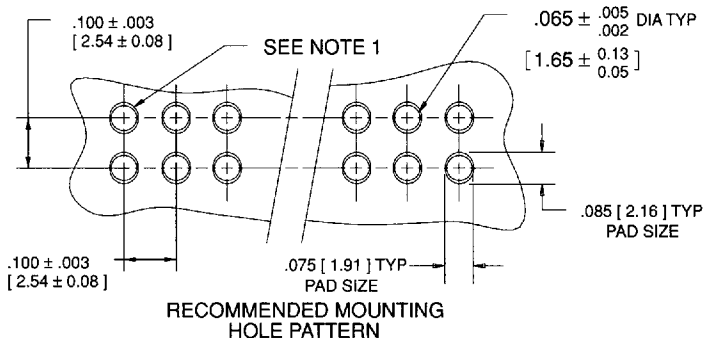
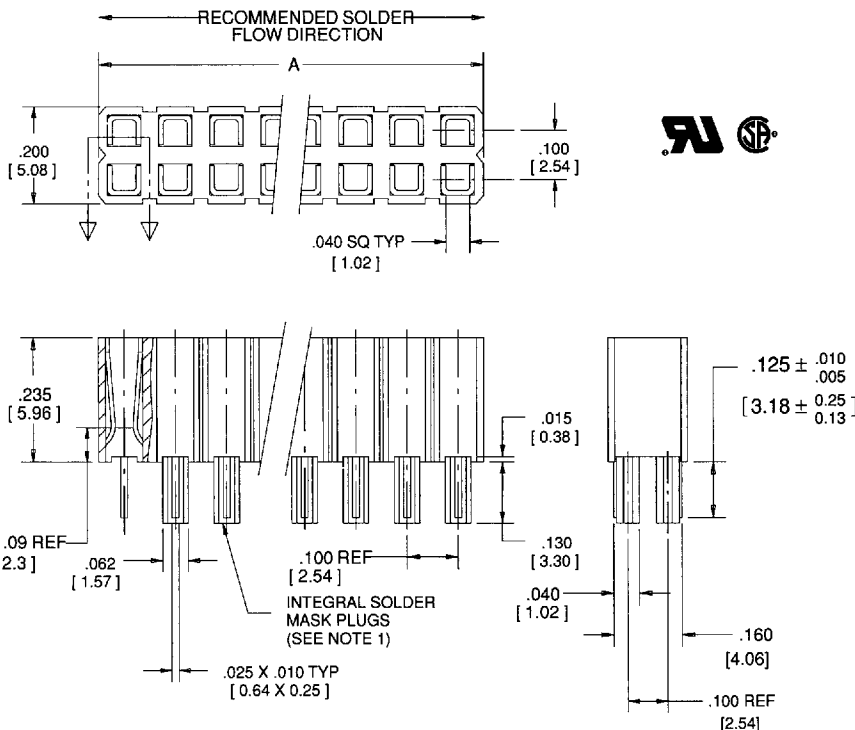
.100" x 100" Thru Board Socket

Straight Solder Tails

929 Series

Sheet 2 of 2

TS-0310-11



NOTES:

1. IT IS RECOMMENDED THAT THE PLATED THRU-HOLE ON THE ENDS BE .062". THIS WILL PREVENT THE CONNECTOR FROM FLOATING DURING THE WAVE SOLDERING PROCESS.
2. INTEGRAL SOLDER MASK PLUGS ARE REMOVED AFTER SOLDERING BY USING THE 3M HAND TOOL 929013 WITH THE 929025-0X-XX MOLDED HEAD.
3. DO NOT HAND SOLDER THIS CONNECTOR BECAUSE THE SOLDER HEAT AND VOLUME OF SOLDER CANNOT BE ADEQUATELY CONTROLLED. THIS WOULD MAKE THE INTEGRAL PLUGS DIFFICULT OR IMPOSSIBLE TO REMOVE.
4. THE CONNECTOR SHOULD BE FLOW SOLDERED SUCH THAT IT ENTERS THE SOLDER WAVE, END FIRST (WIDTH).
5. REQUEST TECH BRIEF FOR PROPER APPLICATION USAGE.

CONTACT QTY CODE	CONTACT QTY	DIM. A +.000 [+0.00] -.025 [-0.64]
02	04	.200 [5.08]
03	06	.300 [7.62]
04	08	.400 [10.16]
05	10	.500 [12.70]
06	12	.600 [15.24]
07	14	.700 [17.78]
08	16	.800 [20.32]
09	18	.900 [22.86]
10	20	1.000 [25.40]
11	22	1.100 [27.94]
12	24	1.200 [30.48]
13	26	1.300 [33.02]
14	28	1.400 [35.56]
15	30	1.500 [38.10]
16	32	1.600 [40.64]
17	34	1.700 [43.18]
18	36	1.800 [45.72]
19	38	1.900 [48.26]
20	40	2.000 [50.80]
21	42	2.100 [53.34]
22	44	2.200 [55.88]
23	46	2.300 [58.42]
24	48	2.400 [60.96]
25	50	2.500 [63.50]
26	52	2.600 [66.04]
27	54	2.700 [68.58]
28	56	2.800 [71.12]
29	58	2.900 [73.66]
30	60	3.000 [76.20]
31	62	3.100 [78.74]
32	64	3.200 [81.28]
33	66	3.300 [83.82]
34	68	3.400 [86.36]
35	70	3.500 [88.90]
36	72	3.600 [91.44]
37	74	3.700 [93.98]
38	76	3.800 [96.52]
39	78	3.900 [99.06]
40	80	4.000 [101.60]

Inch
[mm]

Tolerance Unless Noted			
	.0	.00	.000
Inch	± .1	± .01	± .005

[] Dimensions for
Reference Only

Ordering Information

929XXX-01-XX-XX

Plating Options:*

842 = Gold

972 = 100 μ" [2.54 μm]

Tin Lead

Contact Quantity Code:

See Table

(Contacts per row)

Gold Plating Thickness:*

10 = Wiping Area 10 μ" [0.25 μm] Gold

30 = Wiping Area 30 μ" [0.76 μm] Gold

(No entry required for Tin Lead plating)

Mouser Electronics

Authorized Distributor

Click to View Pricing, Inventory, Delivery & Lifecycle Information:

3M:

[929972-01-21](#) [929972-01-11](#)