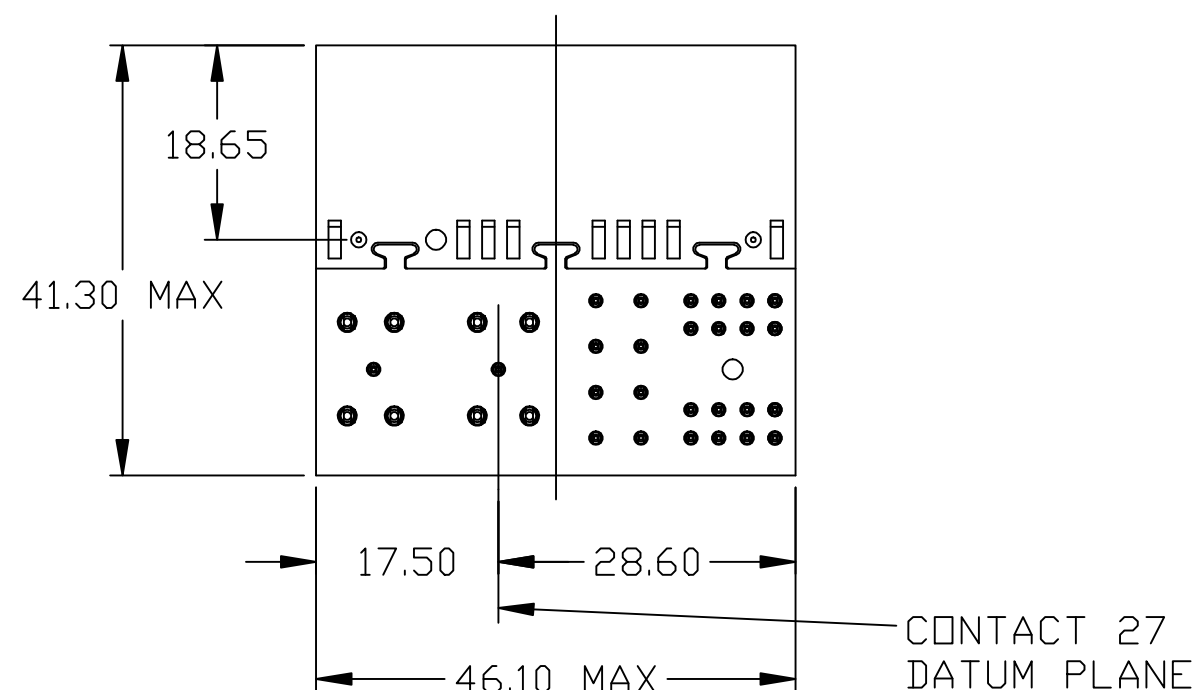
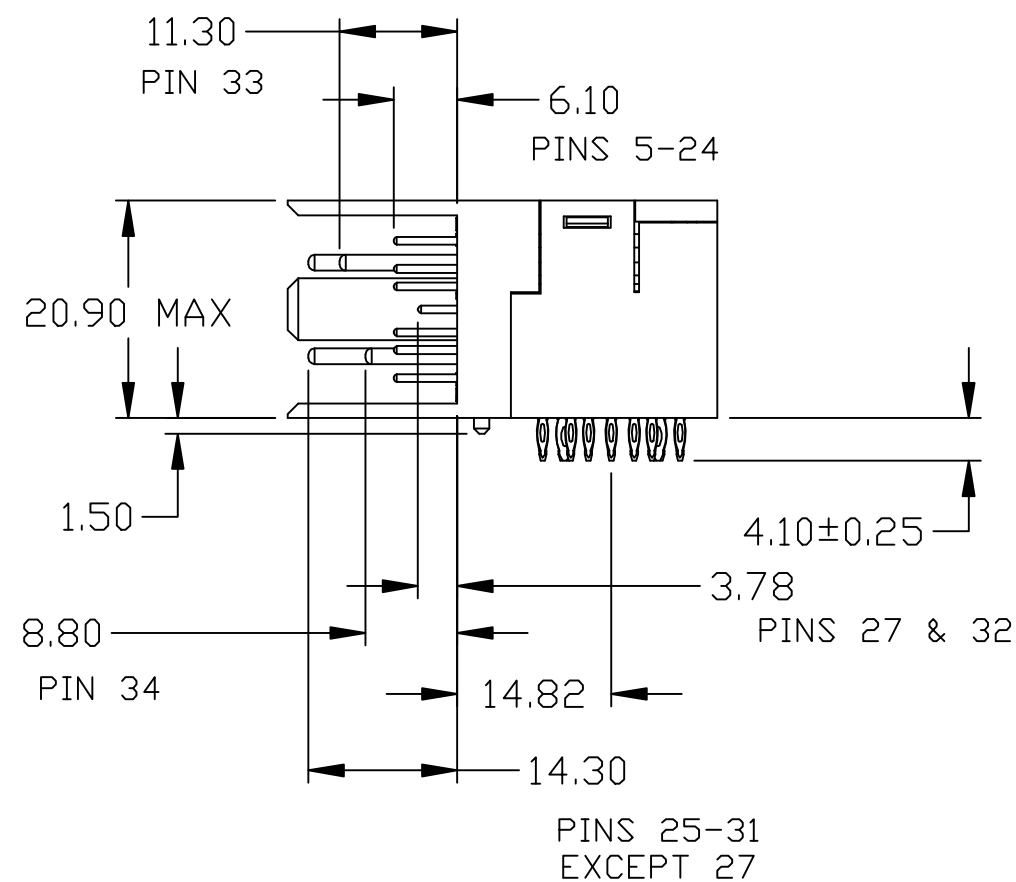
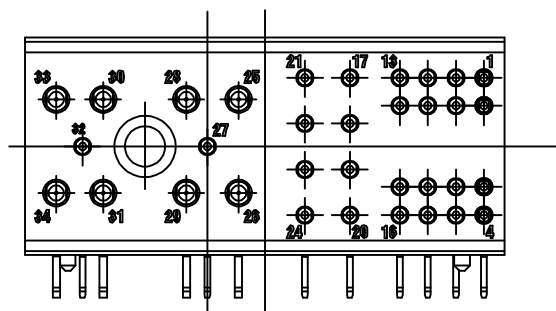


3M™ POWER RIGHT ANGLE MALE CONNECTOR  
FOR ATCA APPLICATIONS



NOTES:

1. MATERIALS AND FINISH:  
INSULATOR: GLASS FILLED POLYESTER (PBT) UL94V-0  
CONTACTS: COPPER ALLOY

2. PLATING:

-ES  
FINISH: 0.76um MIN Au  
UNDERCOAT: 1.27um MIN Ni  
-G  
FINISH: 0.25um MIN Au  
UNDERCOAT: 1.27um MIN Ni  
-DA  
FINISH: 0.08um MIN Au  
UNDERCOAT: 1.27um MIN Ni

3. ELECTRICAL CHARACTERISTICS

INSULATION RESISTANCE ---  $5 \times 10^9$  OHMS  
INITIAL CONTACT RESISTANCE  
POWER CONTACT ----- 2.2 MILLIOHMS MAX  
SIGNAL CONTACT ----- 8.5 MILLIOHMS MAX  
VOLTAGE PROOF  
PIN 1-16: 1000 VR.M.S  
PIN 17-34: 2000 VR.M.S  
CURRENT CARRYING CAPACITY  
SIGNAL PINS: 1A  
POWER PINS: 16A

4. SEE THE REGULATORY INFORMATION APPENDIX  
(RIA) IN THE "RoHS COMPLIANCE" SECTION  
OF: WWW.3MCONNECTOR.COM FOR COMPLIANCE  
INFORMATION (RIA E1 & C1 APPLY).


5. REFERENCE DOCUMENT: 78-9101-3345-9

6. IN THE EVENT OF CONFLICT BETWEEN THIS DATA  
AND THAT CONTAINED IN THE PRODUCT SPEC.,  
THE PRODUCT SPEC. TAKES PRECEDENT.

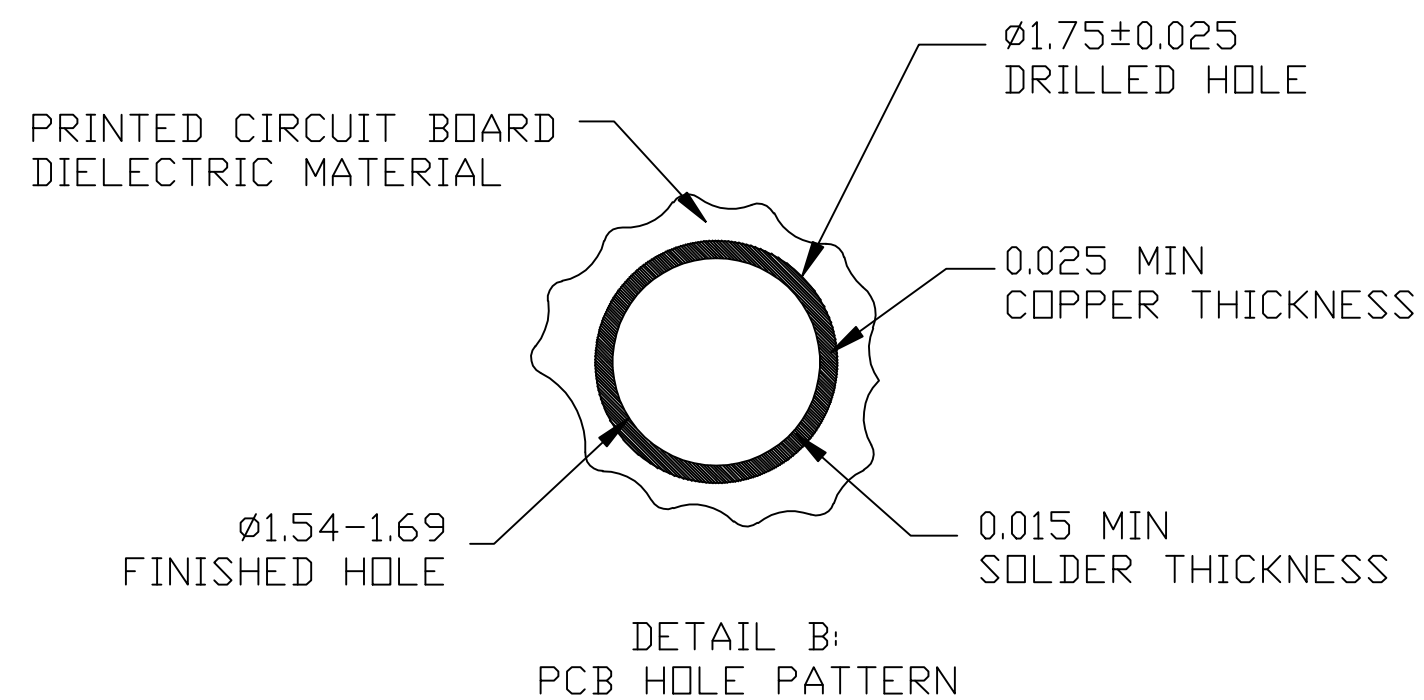
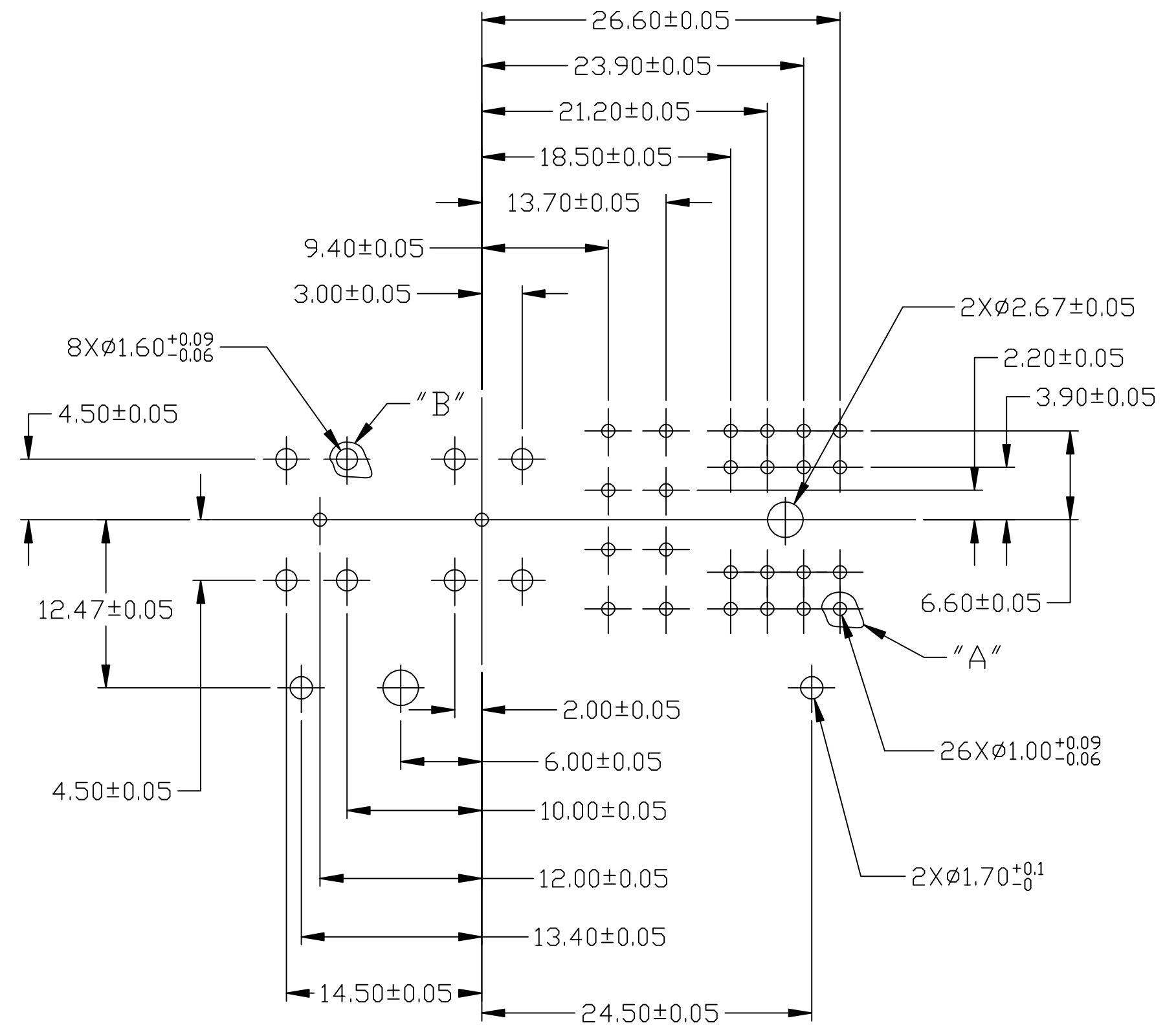
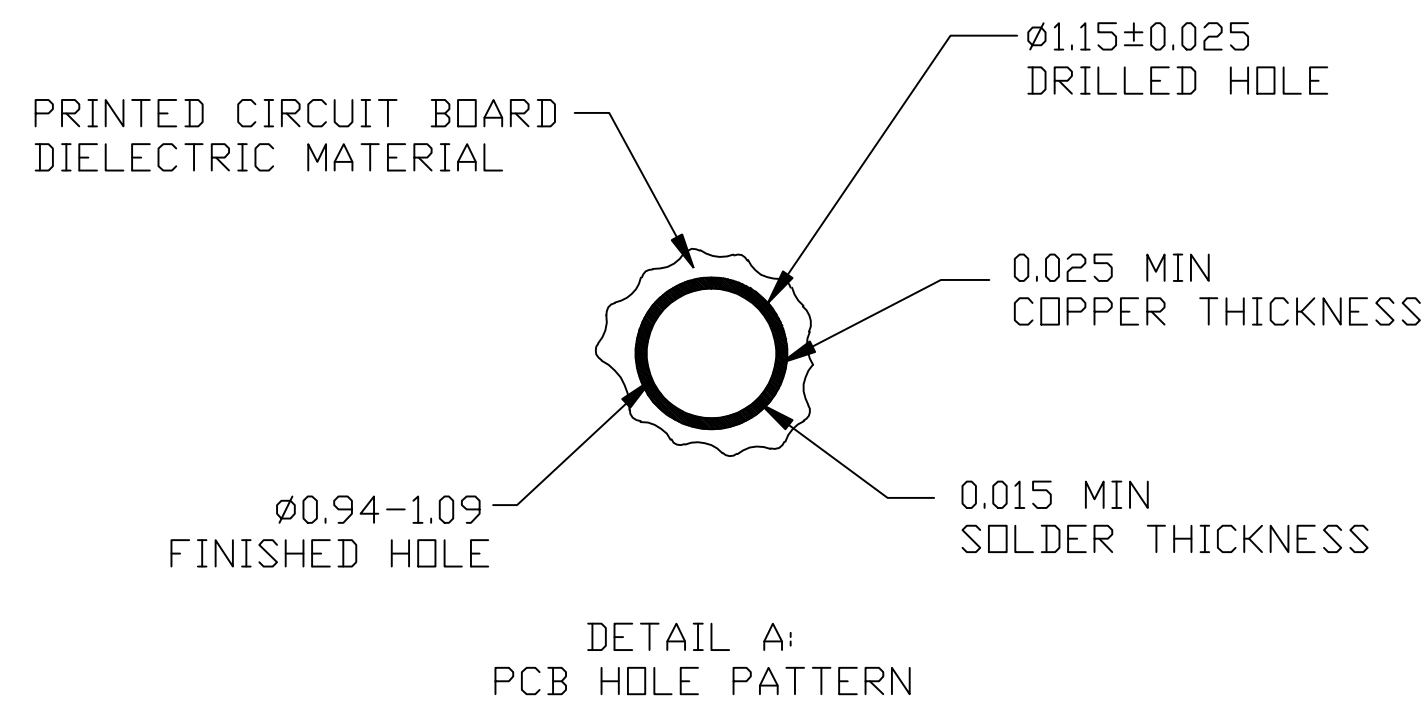
7. PART No:	PART DESCRIPTION	CONTACT POSITIONS
	2P01-0100-XX	34
	2P01-0200-XX	30, EXCEPT POSITIONS 1-4
	2P01-0300-XX	22, EXCEPT POSITIONS 1-4, 17-24
	-XX IS PLATING TYPE	

8. FOR MATING PRODUCT USE:  
2P02-0X00-XX ATCA POWER BACKPLANE  
FEMALE CONNECTOR

9. PCB THICKNESS: MINIMUM:2.00MM  
MAXIMUM:5.00MM

DESIGN REFERENCE	NEXT ASSEMBLY	REV	ECO	ISSUE DATE AND DESCRIPTION	DRFT	CHKD
DISTRIBUTION CODES		DRFT	ML	DATE 1/10/11	MFG	DATE
		CHKD	TS	DATE 1/10/11	APPL	DATE
DIVISION	DIVISION CODE	 3M Center St. Paul, MN 55144 © 3M COPYRIGHT This document is the copyrighted property of the 3M Company and may not be reproduced without 3M written permission or used for other than 3M authorized purposes.				
DO NOT SCALE DRAWING	SCALE					
THIRD ANGLE PROJECTION	TOLERANCES EXCEPT AS NOTED	TITLE 2P01-0X00-XX ATCA POWER RIGHT ANGLE MALE CONNECTOR				
INTERPRET PER ASME Y14.5 - 1994	INCHES .0 ± * .00 ± * .000 ± * .0000 ± *					
MAX SURFACE ROUGHNESS □ ALL SURFACES ✓ □ MARKED ONLY	MILLIMETERS 0 ± * .0 ± 0.30 .00 ± 0.20 .000 ± 0.10	CAGE NUMBER	SIZE	DRAWING NO.	REV.	
	ANGLES ± 1°			78-5100-2376-1	A	
		MODEL		DET. LISTS	□ YES □ NO	SHT 1 OF 2

# 3M™ POWER RIGHT ANGLE MALE CONNECTOR FOR ATCA APPLICATIONS



RECOMMENDED PC BOARD REQUIREMENTS  
(COMPONENT SIDE OF BOARD SHOWN)

DESIGN REFERENCE		NEXT ASSEMBLY		REV	ECO	ISSUE DATE AND DESCRIPTION		DRFT	CHKD
DISTRIBUTION CODES				DRFT	ML	DATE 1/10/11	MFG	DATE	
				CHKD	TS	DATE 1/10/11	APPL	DATE	
DIVISION		DIVISION CODE				<p>© 3M COPYRIGHT. This document is the copyrighted property of the 3M Company and may not be reproduced without 3M written permission or used for other than 3M authorized purposes.</p>			
DO NOT SCALE DRAWING		SCALE							
THIRD ANGLE PROJECTION		TOLERANCES EXCEPT AS NOTED		<p>2P01-0X00-XX ATCA POWER RIGHT ANGLE MALE CONNECTOR</p>					
INTERPRET PER ASME Y14.5 - 1994		INCHES							
MAX SURFACE ROUGHNESS		MILLIMETERS		CAGE NUMBER					
<input type="checkbox"/> ALL SURFACES <input checked="" type="checkbox"/> MARKED ONLY		.0 ± * .00 ± * .000 ± * .0000 ± *		DRAWING NO. 78-5100-2376-1					
		.0 ± 0.30 .00 ± 0.20 .000 ± 0.10		REV. A					
		ANGLES ± 1'		MODEL					
				DET. LISTS <input type="checkbox"/> YES <input type="checkbox"/> NO SHT 2 OF 2					

# Mouser Electronics

Authorized Distributor

Click to View Pricing, Inventory, Delivery & Lifecycle Information:

3M:

[2P01-0200-DA](#) [2P01-0300-DA](#)