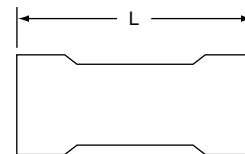




Scotchlok™ Connectors

MV8PC, MV6PC, MV4PC

Parallel Connector, Vinyl Insulated, Brazed Seam



Data Sheet

Product Number	Wire Range (AWG)	L	Thickness	Barrel Length	Barrel I.D.	
					In	CMA
MV8PC	8	0.97	0.050	0.40	0.175	30625
MV6PC	6	1.21	0.050	0.45	0.250	62500
MV4PC	4	1.44	0.075	0.54	0.280	78400

MV8PC

1 #18 to 1 #18, 16, 14, 12, 10, 8

1 #16 to 1 #16, 14, 12, 10, 8

1 #14 to 1 #14, 12, 10, 8

1 #12 to 1 #12, 10

Min. CMA: 3240, Max. CMA: 20620

MV6PC

1 #14 to 1 #14, 12, 10, 8, 6

1 #12 to 1 #12, 10, 8, 6

1 #10 to 1 #10, 8, 6

1 #8 to 1 #8

Min. CMA: 8220, Max. CMA: 36620

MV4PC

1 #12 to 1 #12, 10, 8, 6, 4

1 #10 to 1 #10, 8, 6, 4

1 #8 to 1 #8, 6

Min. CMA: 13060, Max. CMA: 52020

Installation Information

⚠ WARNING

Turn power off before installing or removing terminal. All electrical work should be done according to appropriate electrical codes.

Strip away wire insulation:

AWG	Length
8	1/2"
6	9/16"
4	5/8"

Make the crimp in the proper station of a recommended 3M crimp tool: TH-450 (scissor style) or WT 115A, or hand tools, Thomas & Betts WT 115A, or Burndy MY29-3.

Specifications

Wire Size:

Barrel Seam:

Maximum Operating Temp:

Maximum Current:

Insulator Material:

Terminal Material:

Terminal Plating:

See Table Above

Brazed Seam

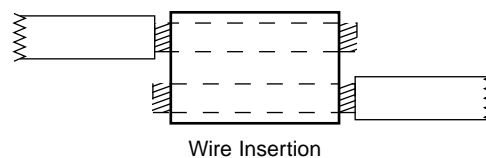
221°F (105°C)

Same as Wire

Vinyl

ETP Copper

Tin



Engineering Specification

Crimp-type terminals shall, electrically and mechanically, connect permanently to the pre-stripped end of two stranded copper wires.

The connector line shall offer barrel variations in wire (AWG) size (22 thru 4) and construction (non-insulated brazed seam, vinyl insulated butted seam, seamless, etc...).

The Vinyl Insulated, Brazed Seam Parallel Connector shall be tin-plated, annealed copper, having a round barrel and a close fitting vinyl covering, color coded and sized for a specified (AWG) wire range (8, 6, 4).

3M and Scotchlok are trademarks of 3M

IMPORTANT NOTICE

Before using this product, you must evaluate it and determine if it is suitable for your intended application. You assume all risks and liability associated with such use.

Warranty; Limited Remedy; Limited Liability. This product will be free from defects in material and manufacture as of the date of purchase. **3M MAKES NO OTHER WARRANTIES INCLUDING, BUT NOT LIMITED TO, ANY IMPLIED WARRANTY OF MERCHANTABILITY OR FITNESS FOR A PARTICULAR PURPOSE.** If this product is defective within the warranty period stated above, your exclusive remedy shall be, at 3M's option, to replace or repair the 3M product or refund the purchase price of the 3M product. **Except where prohibited by law, 3M will not be liable for any loss or damage arising from this 3M product, whether direct, indirect, special, incidental or consequential regardless of the legal theory asserted.**



Electrical Products Division

6801 River Place Blvd.
Austin, TX 78726-9000
<http://www.3M.com/elpd>

Litho in USA.
© 3M 2002 78-8126-0616-4-A

Mouser Electronics

Authorized Distributor

Click to View Pricing, Inventory, Delivery & Lifecycle Information:

3M:

[MV4BCK](#) [MV6BCK](#)