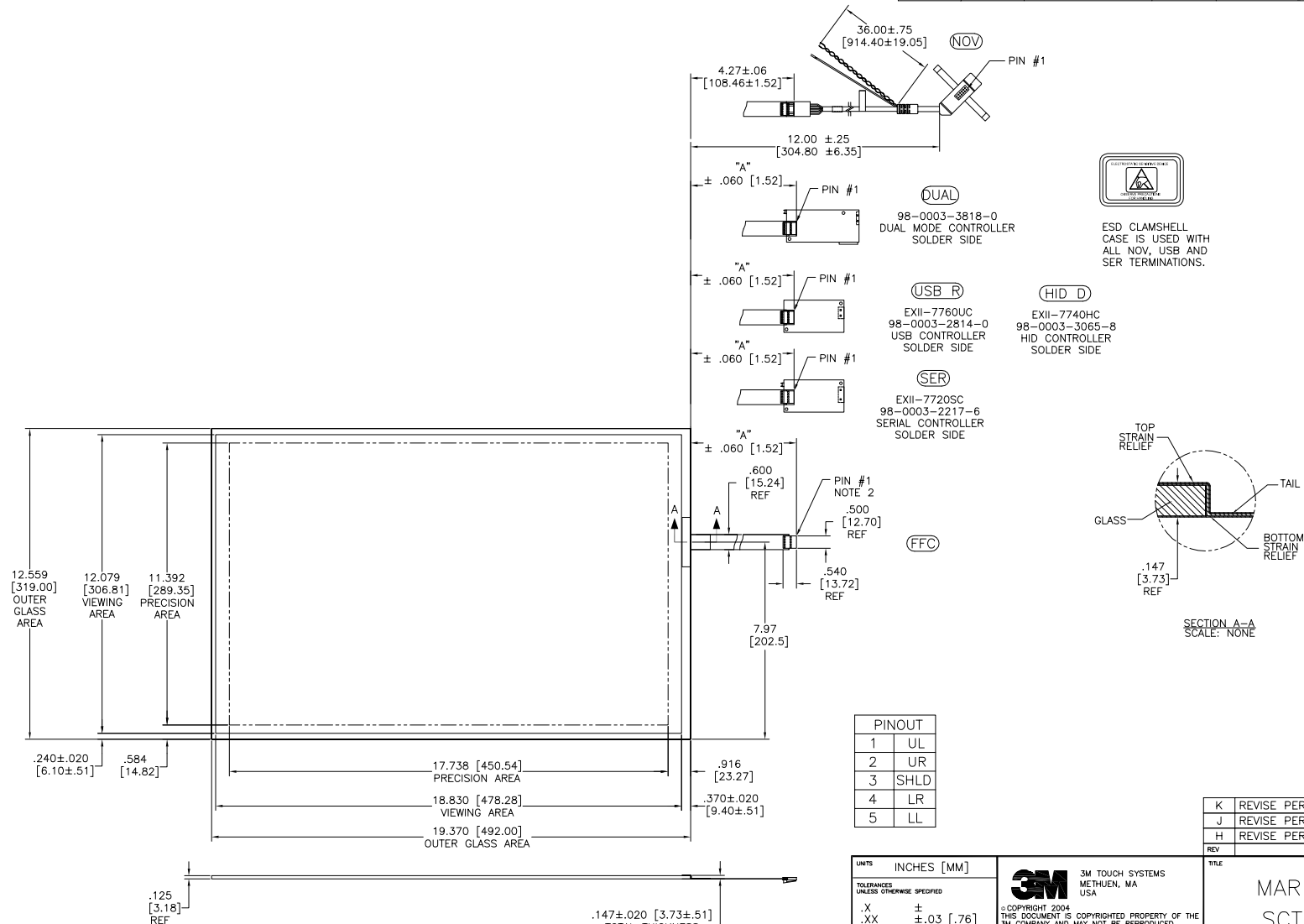



OGA DIAGONAL: 23.09 [586.4]
VA DIAGONAL: 22.37 [568.2]
PA DIAGONAL: 21.08 [535.5]


TOP LEVEL NUMBER	US NUMBER	TYPE	DIM "A" (TOTAL GLASS TO CONNECTOR)	A/G FINISH	PROD SPEC
17-9311-205	98-0003-2209-3	FFC	8.00" [203.20]	AG500	236555
17-9311-206	98-0003-2731-6	NOV	SEE DWG	AG500	236555
17-9311-227	98-0003-2734-0	SER	8.00" [203.20]	AG500	236555
17-9311-226	98-0003-3052-6	USB R	8.00" [203.20]	AG500	236555
N/A	98-0003-3652-3	HID D	8.00" [203.20]	AG500	236555
N/A	98-0003-3420-5	FFC	8.00" [203.20]	WC100	34523
N/A	98-0003-3418-9	SER	8.00" [203.20]	WC100	34523
N/A	98-0003-3419-7	USB R	8.00" [203.20]	WC100	34523
N/A	98-0003-3975-8	DUAL	8.00" [203.20]	AG500	236555



- NOTES:
1. WEIGHT OF GLASS IN GRAMS: 1196±10%
2. NICOMATIC HOUSING P/N: QLO5
NICOMATIC RECEPTACLES (PINS) MATTE TIN PLATED P/N: 14106-12
HOUSING ORIENTED WITH LATCH DOWN

PINOUT	
1	UL
2	UR
3	SHLD
4	LR
5	LL

UNITS	INCHES [MM]	
TOLERANCES UNLESS OTHERWISE SPECIFIED		
.X	±	
.XX	±.03	[.76]
.XXX	±.015	[.38]
ANGLES	±1°	
THIRD ANGLE PROJECTION		
DO NOT SCALE DRAWING		
SCALE	1 = 1	

	<p>3M TOUCH SYSTEMS METHUEN, MA USA</p>		
<p>©COPYRIGHT 2004 THIS DOCUMENT IS COPYRIGHTED PROPERTY OF THE 3M COMPANY AND MAY NOT BE REPRODUCED WITHOUT 3M WRITTEN PERMISSION OR USED OR DISCLOSED FOR OTHER THAN 3M AUTHORIZED PURPOSES.</p>			
<p>DRAWN</p>	<p>AH</p>	<p>4/07</p>	

K	REVISE PER CO 036256	4/13	SB
J	REVISE PER CO 034069	1/12	SB
H	REVISE PER CO 033640	10/11	SB
REV	CHANGE NOTICE	DATE	DRW

TITLE			
MARKETING DRAWING SCT32NN 22.37" W			
CAD FORMAT		SHEET 1 OF 1	
SIZE	DOCUMENT NO.	REV	
C	34079-MKT	K	

Mouser Electronics

Authorized Distributor

Click to View Pricing, Inventory, Delivery & Lifecycle Information:

3M:

[98-0003-2209-3](#) [98-0003-2734-0](#) [98-0003-3052-6](#)