

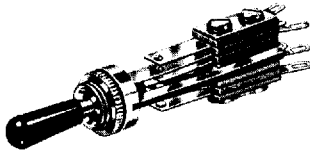
Switchcraft

300 LEV-R® SWITCHES - SERIES 3000 AND 13000

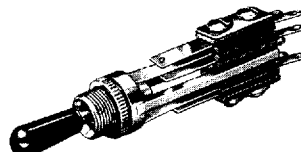
SWITCHCRAFT, INC. 5555 N. Elston Ave. • Chicago, IL 60630 • 773 792-2700 • FAX: 773 792-2129 • www.switchcraft.com

LEVER SWITCHES (continued)

LEV-R® SWITCH SERIES 3000, 13000



Series 3000



Series 13000

Small, ruggedly built switches offer 2- and 3-positions, locking and non-locking types in a choice of switching. Mounts on .625 inch (15.88 mm) diameter centers without locking.

SPECIFICATIONS

Frame: Copper alloy, plated (3000, 13000). Steel, plated (12000).

Bushing and Actuator, Springs, Contact Ratings,

Temperature Range & Leakage Resistance: Same as 28000 Series.

Dielectric Strength: 250V DC.

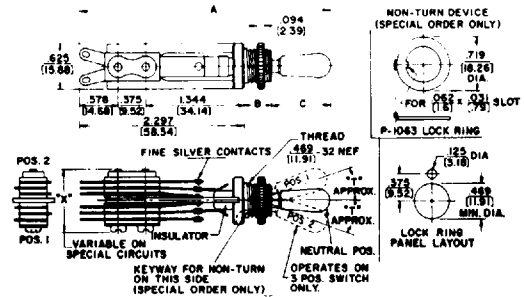
Knob: Black molded thermoplastic.

Mounting Hardware: Knurled copper alloy locknut, T10711, supplied. P10531 hex locknut, special order.

Insulation: Rigid plastic spacers with plastic tubing through stack. Rigid plastic and/or thermoplastic lifters. Thermoplastic cam on actuator end.

SPECIAL ORDER FEATURES

1. Welded cross bar palladium and welded cross bar gold alloy contacts are available. See page 297.
2. Colored knobs are available. See "Knobs", page 305.
3. UL recognized switches. See page 297.



MAXIMUM PANEL THICKNESS

SERIES 3000 .094" (2.39mm)

SERIES 13000 .250" (6.35mm)

Series	A	B	C	T
3000	3.375 (85.72)	.203 (5.16)	.875 (22.22)	30°
13000	3.531 (89.69)	.375 (9.52)	.859 (21.82)	25°

PART NUMBERS

TWO POSITION**

THREE POSITION**

Part Number		Stack Hgt. "X" & "Y" (max.)	Switch -ing	Part Number		Stack Hgt. "X" & "Y" (max.)	Switching	
Series 3000	Series 13000			Series 3000	Series 13000		Pos.1	Pos.2
◇3001	◇13001	.750 (19.05)	1-A	◇3033	◇13033	.750 (19.05)	1-K	
◇3003	◇13003	.750 (19.05)	1-C	◇3034	◇13034	.938 (23.82)	1-A	1-A
◇3004	◇13004	.906 (23.01)	2-A	◇3036	13036	.875 (22.22)	1-C	1-C
◇3006	◇13006	1.000 (25.4)	2-C	◇3036D	◇13036D	1.0 (25.4)	1-D	1-D
	◇13006D	1.063 (27.00)	2-D	3037	◇13037	.875 (22.22)	2-K	
◇3006D	◇13009	1.219 (30.96)	3-C	◇30312	◇130312	1.375 (34.92)	2-C	2-C
				30313	130313	1.375 (34.92)	4-K	

INTERCOM SWITCHES (Talk-Listen)

Part Number	Part Number	Stack Height "X" & "Y"	Switching
◇3033T	◇13033T	.75	1-K
◇3037T	◇13037T	.875	2-K

+ Add prefix "R" to part number if non-turn mounting is required. (Special order).

* Add suffix "L" to part number if locking type is required.

◇ Special order only; contact Switchcraft.

DIMENSIONS ARE FOR REFERENCE ONLY Inch
(mm)

NOTE: Contact your Switchcraft Representative for price and delivery.

All products shown in this catalog are covered by Switchcraft's limited lifetime warranty.

© Registered trademark of Switchcraft, Inc.

D 21F 7597503 0005176 09T

LEVER SWITCHES

DESIGN FEATURES

High quality, field-proven Switchcraft® lever switches are available in a wide selection of illuminated and non-illuminated versions, 2- and 3-position, locking and non-locking functions can be provided. Switchcraft illuminated lever switches feature choice of colors, wide selection of switching circuits, single lamp illumination and ease of mounting and lamp replacement.

All switches utilize nickel silver springs without "form" at point of flexing to insure long spring life. The springs are assembled into a conventional stack assembly, insulated from each other by phenolic spacers with plastic tubing press-fit through each stack, insuring correct alignment of contacts and providing high insulation resistance.

APPLICATIONS

Various front panel switching applications on computers, telecommunications systems, industrial control equipment, intercoms, ground support systems, medical electronics, scientific instruments, broadcast consoles and test instrumentation.

CONTACTS

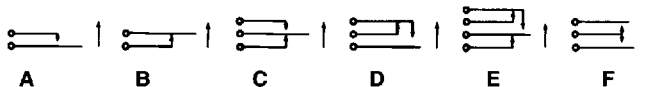
Below are listed the basic contacts available on switches in this catalog:

1. Fine silver contacts rated at 2A, 200W (maximum) AC non-inductive load.
2. Welded cross bar silver contacts rated at 3A, 300W (maximum) AC non-inductive load.
3. Welded cross bar palladium contacts rated at 2A, 200W (maximum) AC non-inductive load.
4. Welded cross bar gold alloy contacts rated at up to 1A, 100W (maximum) AC non-inductive load. (Dry circuit applications.)

BASIC CONTACT FORMS

Below are the basic contact forms available standard on all Switchcraft Lever Switches. Specify circuits needed by referring to the letter identification and respective location on frame. See dimensional drawings for stack switch location.

BASIC CONTACT FORMS



To avoid ordering special switches it is possible to use a larger standard circuit, providing the circuit fulfills your requirements.

Circuit Form K is widely used in talk-listen (intercom) function applications. In normal position (neutral), switch does not contact upper or lower contact spring. During typical operation, lever is held in upper (momentary) position while speaking. Releasing lever allows switch to return to neutral. For listening, lever is moved to down (locking) position. Lever is manually returned to neutral when finished.

SCHEMATIC DIAGRAM FORM K



ORDERING STANDARD SWITCHES

Order lever switches by part number from pages 295 through 304.

LAMP DATA

Lever-Lite® switches use T-1 3/4 flange base lamps which are available from commercial sources.

ORDERING SPECIAL SWITCHES Lever Switches

Should you desire a special version of any Switchcraft® lever switch not shown here, we require the following information:

1. Switch series.
2. Number of positions.
3. Mechanical action (locking, non-locking, etc.).
4. Contact configuration for each position.
5. Type of contact material.
6. Color sequence (Lever-Lite III).

UL RECOGNIZED LEVER SWITCHES

Seven series of Switchcraft lever switches are UL recognized. These switches are available on special order to fulfill your switching requirements which specifically require UL listed switching devices.

1. Series 3000
2. Series 6000
3. Series 12000
4. Series 13000
5. Series 16000
6. Series 28000
7. Series 41000

NOTE: Refer to switch series in this catalog for full mechanical specifications and additional standard and special features.

DIMENSIONS ARE FOR REFERENCE ONLY $\frac{\text{Inch}}{(\text{mm})}$

NOTE: Contact your Switchcraft Representative for price and delivery.

All products shown in this catalog are covered by Switchcraft's limited lifetime warranty.

® Registered trademark of Switchcraft, Inc.

D 21F ■ 7597503 0005173 380 ■