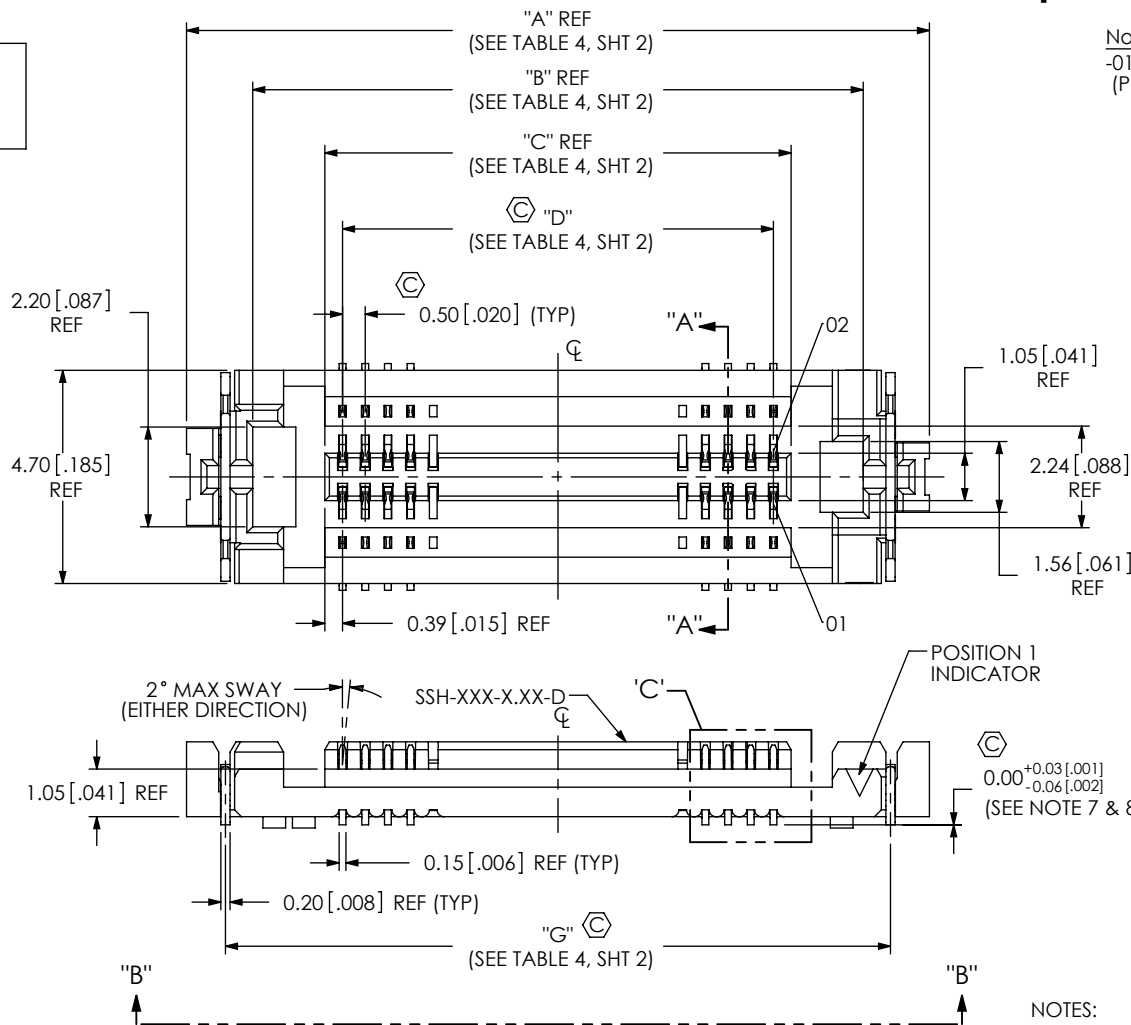


DO NOT  
SCALE FROM  
THIS PRINT



No OF POSITIONS  
-010, -020, -030, \*\*040, \*\*050  
(PER ROW)

LEAD STYLE  
-1.50  
-2.00

PLATING SPECIFICATION  
-G: 10µ" MIN Au IN CONTACT,  
1µ" MIN Au ON TAIL

PACKAGING  
-TR: TAPE & REEL

OPTION  
-A: ALIGNMENT PIN  
(SEE FIG 4, SHT 3)  
-K: K-DOT  
(SEE FIG 2, SHT 2)

ROW SPECIFICATION  
-D: DOUBLE ROW

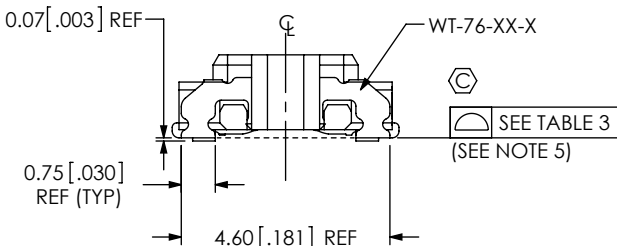
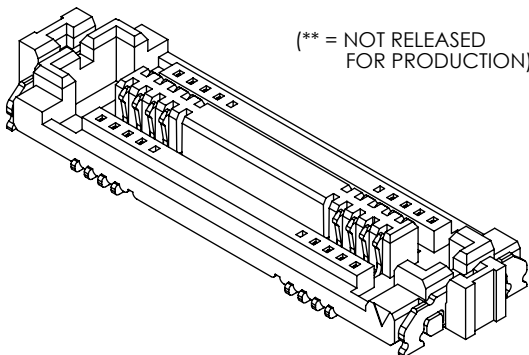


TABLE 1			
STACK HEIGHT			
SSH LEAD STYLE	STH LEAD STYLE		
	-0.50	-1.00	*-2.00
-1.50	2.0 [0.08]	2.5 [0.10]	3.5 [0.14]
-2.00	2.5 [0.10]	3.0 [0.12]	4.0 [0.16]

(\* = NOT TOOLED)

TABLE 2			
LEAD STYLE	BODY PART NUMBER	CONTACT PART NUMBER	WT PART NUMBER
-1.50	SSH-XXX-1.50-D-X	C-354-1.50-X	WT-76-01-X
-2.00	SSH-XXX-2.00-D-X	C-354-2.00-X	WT-76-02-X

FIG 1  
SSH-020-1.50-X-D SHOWN  
(SOME CENTER FEATURES NOT SHOWN FOR CLARITY)

TABLE 3	
No. OF POS	COPLANARITY
-010 THRU -050	0.102 [.0040]

NOTES:

- ⊕ REPRESENTS A CRITICAL DIMENSION.
- MINIMUM PUSHOUT FORCE: 1.60N[.36 LB].
- PARTS TO BE PACKAGED IN TAPE AND REEL AS STANDARD
- FOR QUANTITIES UP TO 49 PIECES, NO LEADER, TRAILER OR REEL WILL BE SUPPLIED FOR QUANTITIES OF 50-124, NO LEADER OR TRAILER WILL BE SUPPLIED.
- COPLANARITY MEASUREMENT INCLUDES WT'S WHERE APPLICABLE.
- CONTACT TIPS NOT TO PROTRUDE ABOVE PLASTIC.
- WT TO BE MEASURED FROM FIRST AND LAST CONTACT LEAD POSITIONS.
- USE MEASURING FIXTURE AT-2301-802.

UNLESS OTHERWISE SPECIFIED,  
DIMENSIONS ARE IN MILLIMETERS[INCHS].

TOLERANCES ARE:

DECIMALS ANGLES  
X.X: ±0.3 [.01]  
X.XX: ±0.13 [.005]  
X.XXX: ±0.051 [.0020]

PROPRIETARY NOTE

THIS DOCUMENT CONTAINS INFORMATION  
CONFIDENTIAL AND PROPRIETARY TO  
SAMTEC, INC. AND SHALL NOT BE REPRODUCED  
OR TRANSFERRED TO OTHER DOCUMENTS OR  
DISCLOSED TO OTHERS OR USED FOR ANY  
PURPOSE OTHER THAN THAT WHICH IT WAS  
OBTAINED WITHOUT THE EXPRESSED WRITTEN  
CONSENT OF SAMTEC, INC.

MATERIAL: DO NOT SCALE DRAWING

SHEET SCALE: 6:1

INSULATOR: LCP, COLOR: BLACK  
CONTACT: COPPER ALLOY  
WELD TAB: BRONZE

F:\DWG\MISC\MKTG\SSH-XXX-X.XX-X-D-X-TR-MKT.SLDDRW

**samtec**

520 PARK EAST BLVD, NEW ALBANY, IN 47150  
PHONE: 812-944-6733 FAX: 812-948-5047  
e-Mail: info@SAMTEC.com code 55322

DESCRIPTION:  
SSH SOCKET ASSEMBLY

DWG. NO.  
SSH-XXX-X.XX-X-D-X-TR

BY: ROY LUO 03/29/2011 SHEET 1 OF 3

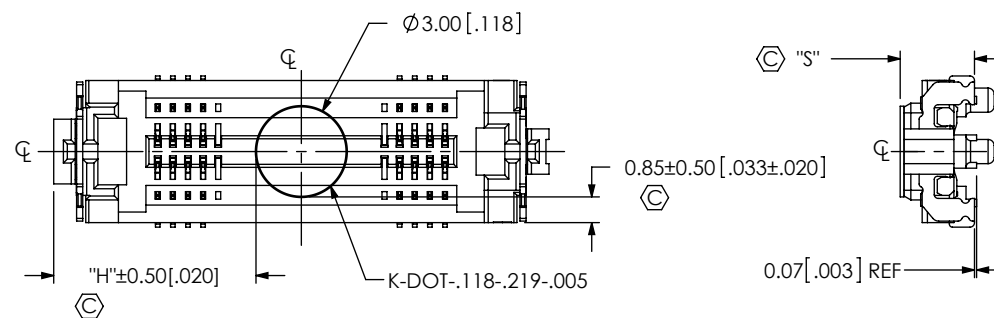
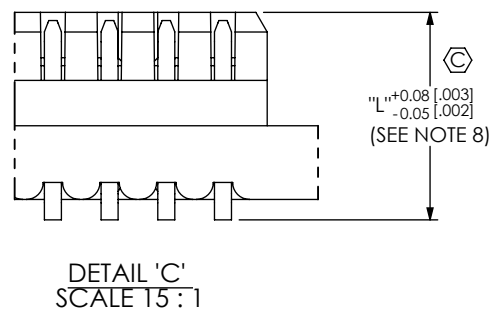
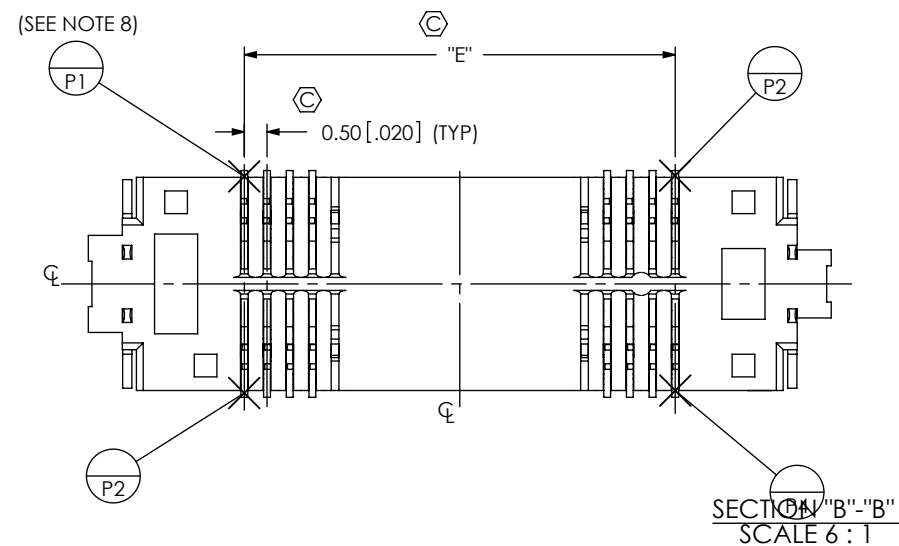
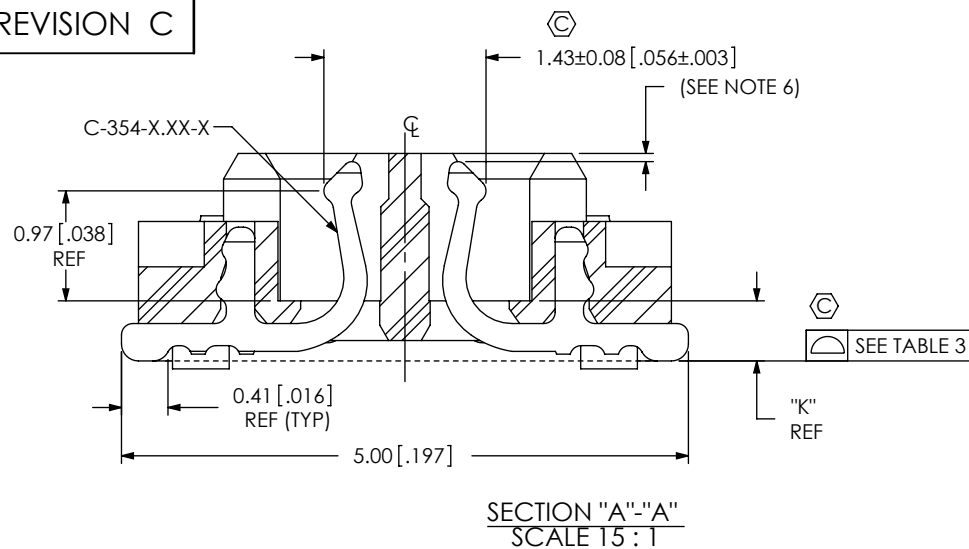


TABLE 5		
LEAD STYLE	"K"	"L"
-1.50	0.53 [0.021]	1.83 [0.072]
-2.00	1.03 [0.041]	2.33 [0.092]

TABLE 6	
LEAD STYLE	"S"
-1.50	1.95 [0.077]
-2.00	2.45 [0.096]

TABLE 4								
NO OF POSITIONS	"A"	"B"	"C"	"D"	"E"	"F"	"G"	"H"
-010	11.38 [0.448]	8.460 [0.3331]	5.28 [0.208]	4.500 [0.1772]	4.500 [0.1772]	8.700 [0.3425]	9.66 [0.380]	4.19 [0.165]
-020	16.38 [0.645]	13.460 [0.5299]	10.28 [0.405]	9.500 [0.3740]	9.500 [0.3740]	13.700 [0.5394]	14.66 [0.577]	6.69 [0.263]
-030	21.38 [0.842]	18.460 [0.7268]	15.28 [0.602]	14.500 [0.5709]	14.500 [0.5709]	18.700 [0.7362]	19.66 [0.774]	9.19 [0.362]
**040	26.38 [1.039]	23.460 [0.9236]	20.28 [0.798]	19.500 [0.7677]	19.500 [0.7677]	23.700 [0.9331]	24.66 [0.971]	11.69 [0.460]
**050	31.38 [1.235]	28.460 [1.1205]	25.28 [0.995]	24.500 [0.9646]	24.500 [0.9646]	28.700 [1.1299]	29.66 [1.168]	14.19 [0.559]

(\*\* = NOT RELEASED FOR PRODUCTION)

## PROPRIETARY NOTE

THIS DOCUMENT CONTAINS INFORMATION CONFIDENTIAL AND PROPRIETARY TO SAMTEC, INC. AND SHALL NOT BE REPRODUCED OR TRANSFERRED TO OTHER DOCUMENTS OR DISCLOSED TO OTHERS OR USED FOR ANY PURPOSE OTHER THAN THAT WHICH IT WAS OBTAINED WITHOUT THE EXPRESSED WRITTEN CONSENT OF SAMTEC, INC.

DO NOT SCALE DRAWING

SHEET SCALE: 4:1

# samtec

520 PARK EAST BLVD, NEW ALBANY, IN 47150  
PHONE: 812-944-6733 FAX: 812-948-5047  
e-Mail: info@SAMTEC.com code 55322

DESCRIPTION:

SSH SOCKET ASSEMBLY

DWG. NO.

SSH-XXX-X.XX-X-D-X-TR

BY: ROY LUO 03/29/2011 SHEET 2 OF 3

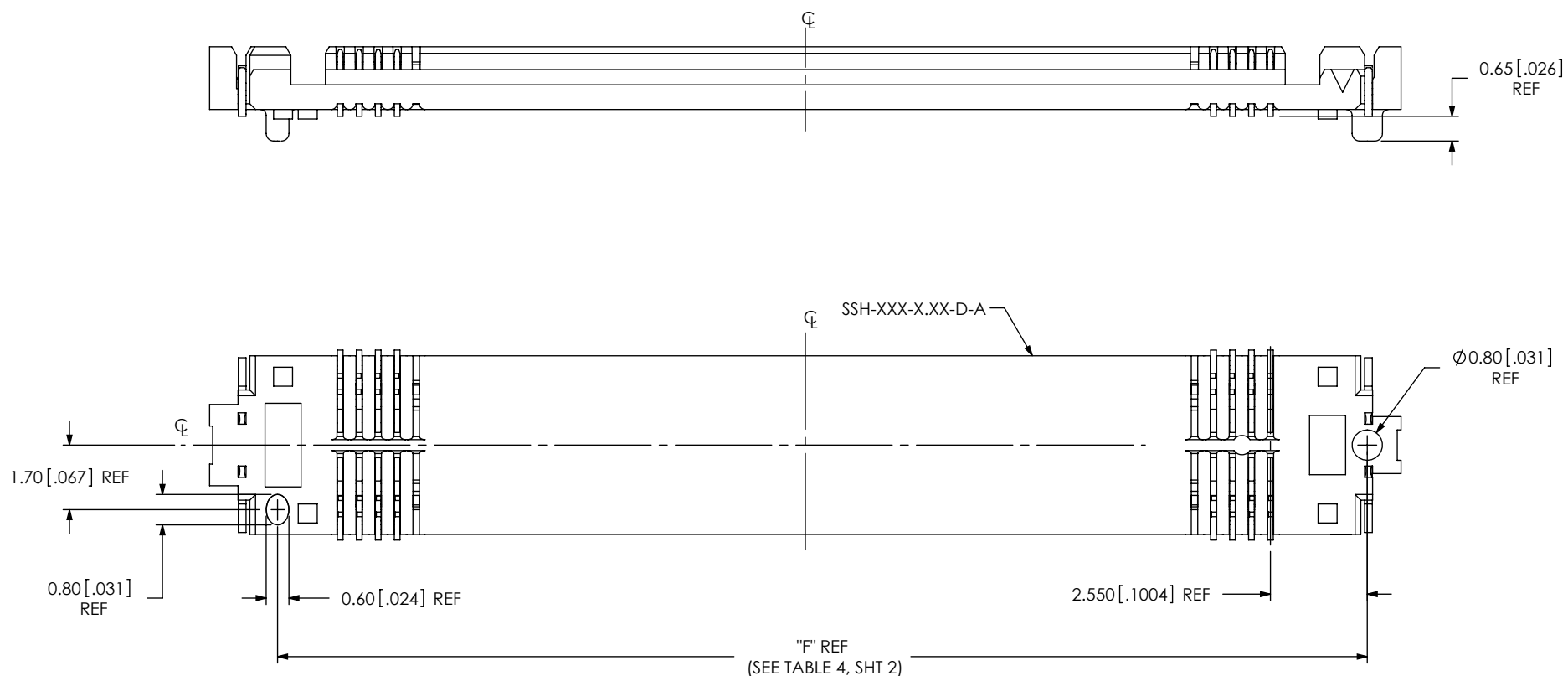


FIG 4  
 (SSH-050-1.50-X-D-A SHOWN)  
 (SAME AS FIG 1, EXCEPT AS SHOWN)  
 (SOME CENTER FEATURES NOT SHOWN FOR CLARITY)  
 (-040 & -050 POSITIONS NOT RELEASED FOR PRODUCTION)

# **PROPRIETARY NOTE**

THIS DOCUMENT CONTAINS INFORMATION  
 CONFIDENTIAL AND PROPRIETARY TO  
 SAMTEC, INC. AND SHALL NOT BE REPRODUCED  
 OR TRANSFERRED TO OTHER DOCUMENTS OR  
 DISCLOSED TO OTHERS OR USED FOR ANY  
 PURPOSE OTHER THAN THAT WHICH IT WAS  
 OBTAINED WITHOUT THE EXPRESSED WRITTEN  
 CONSENT OF SAMTEC, INC.

DO NOT SCALE DRAWING

SHEET SCALE: 6:1

# **samtec**

520 PARK EAST BLVD, NEW ALBANY, IN 47150  
 PHONE: 812-944-6733 FAX: 812-948-5047  
 e-Mail: info@SAMTEC.com code 55322

DESCRIPTION:

SSH SOCKET ASSEMBLY

DWG. NO.

SSH-XXX-X.XX-X-D-X-TR

BY: ROY LUO 03/29/2011 SHEET 3 OF 3