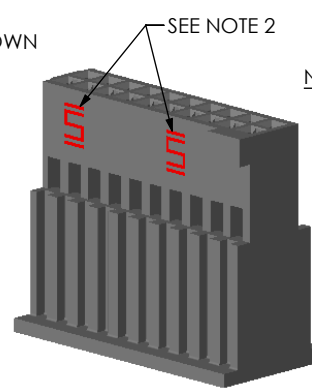
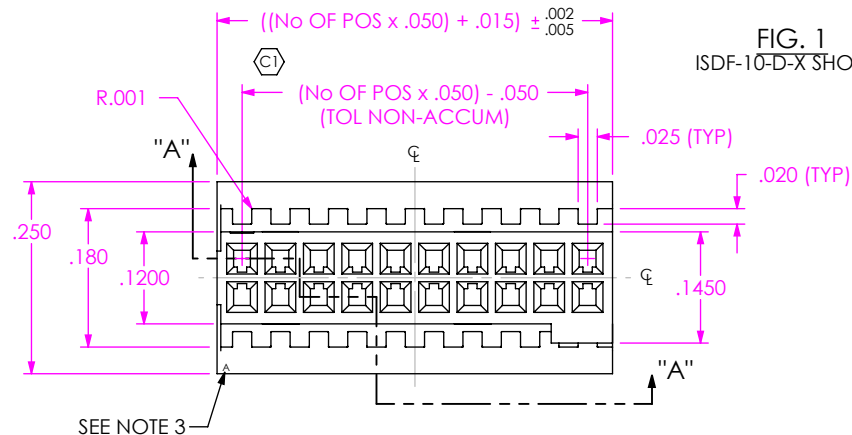


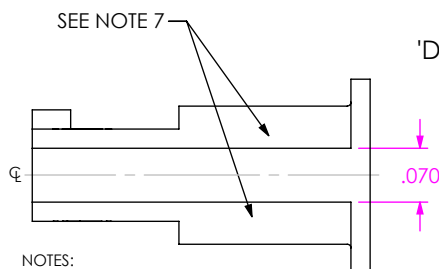
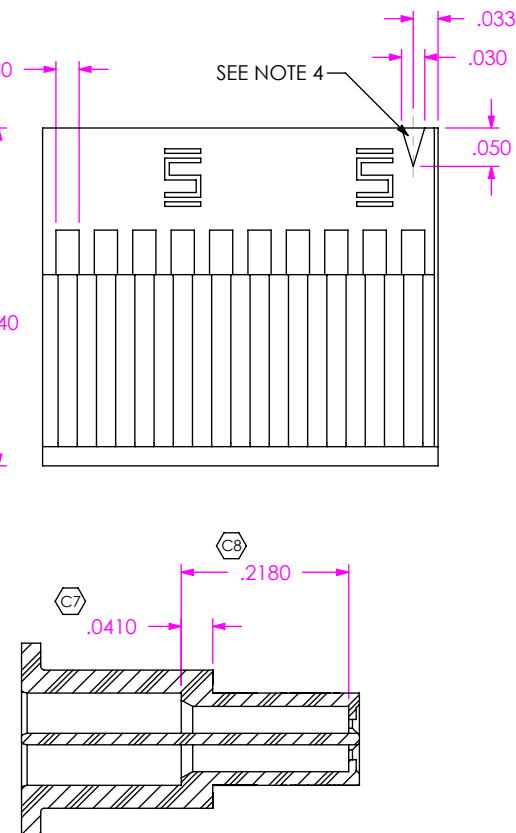
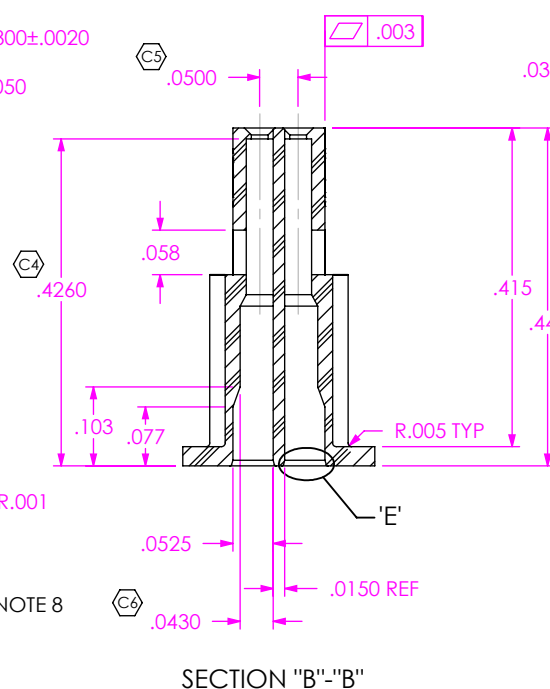
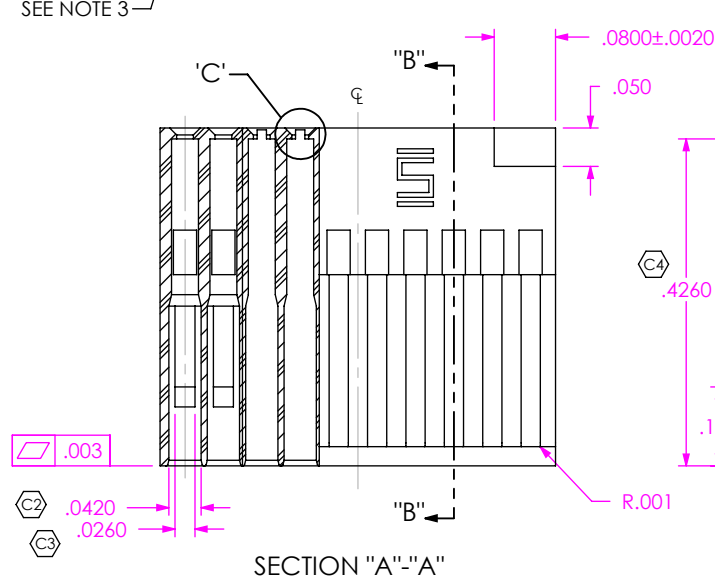
DO NOT
SCALE FROM
THIS PRINT

ISDF-XX-D-X

No OF POSITIONS
-02 THRU -50 [K]
(PER ROW)

NOTCH SPECIFICATION

LEAVE BLANK: NO NOTCH
-C: CHAMFER (SEE SHEET 2,
FIG 2) (7 POSITION ONLY)
-L: FRICTION LOCK
(SEE SHEET 2, FIG 3)
(AVAILABLE ON POS 10 - 30)
-R: RETENTION LATCH (AVAILABLE
ON POS -05 THRU -30)
(SEE SHEET 3, FIG 4)
(SEE NOTE 11)
ROW SPECIFICATION
-D: DOUBLE ROW



NOTES:

1. Ⓢ REPRESENTS A CRITICAL DIMENSION.
2. SAMTEC LOGOS SHALL APPEAR AT LOCATIONS ON SURFACE SHOWN, APPROXIMATELY .075 x .055 (BOTH SIDES).
3. ALL MULTIPLE CAVITY MOLDS SHALL IDENTIFY EACH CAVITY WITH A LETTER DESIGNATION LOCATED WHERE SHOWN.
4. IDENTIFICATION MARKS NOT TO PROTRUDE BEYOND .001 ABOVE THE SURFACE OF THE INSULATOR MATERIAL.
5. MOLDED SURFACES SHALL BE CONSISTENT AND SMOOTH. SURFACES TO BE FREE OF SCRATCHES, NICKS, SINK AREAS, VOIDS OR OTHER BLEMISHES.
6. PART TO BE SYMMETRIC ABOUT THE CENTERLINE WITHIN +/- .0015, UNLESS OTHERWISE STATED.
7. GATE PADS MUST BE RECESSED .005.
8. SPECIFIED POSITIONS TO BE IDENTIFIED WHERE SHOWN (NOTE 4 APPLIES).
9. R.005 OPTIONAL.
10. POSITIONS -10 THROUGH -24 WILL HAVE ONLY ONE LATCH LOCK AT DIMENSION SHOWN; POSITIONS -25 THROUGH -30 WILL HAVE TWO LATCH LOCKS AT DIMENSION SHOWN.
11. OPTION NOT FOR SALE. FOR RETENTION LATCH FEATURE, SEE ISDF-XX-D-M PRINT.

UNLESS OTHERWISE SPECIFIED,
DIMENSIONS ARE IN INCHES.

TOLERANCES ARE:

DECIMALS ANGLES
.XX: ±.01 [.3] 2°
.XXX: ±.003 [.08]
.XXXX: ±.0015 [.038]

PROPRIETARY NOTE

THIS DOCUMENT CONTAINS INFORMATION
CONFIDENTIAL AND PROPRIETARY TO
SAMTEC, INC. AND SHALL NOT BE REPRODUCED
OR TRANSFERRED TO OTHER DOCUMENTS OR
DISCLOSED TO OTHERS OR USED FOR ANY
PURPOSE OTHER THAN THAT WHICH IT WAS
OBTAINED WITHOUT THE EXPRESSED WRITTEN
CONSENT OF SAMTEC, INC.

MATERIAL: DO NOT SCALE DRAWING
VECTRA 475, COLOR: BLACK
MAX REGRIND: 50%

MAX FLASH ALLOWED: .002
MAX GATE VESTIGE: .004

F:\DWG\MISC\MKTG\ISDF-XX-D-X-MKT.SLDDRW

SHEET SCALE: 4:1

samtec

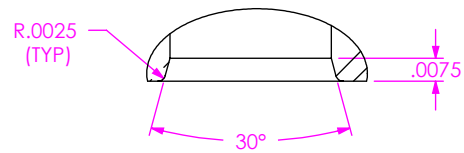
520 PARK EAST BLVD, NEW ALBANY, IN 47150
PHONE: 812-944-6733 FAX: 812-948-5047
e-Mail: info@SAMTEC.com code: 55322

DESCRIPTION:
.050" CL CRIMP WIRE SOCKET INSULATOR

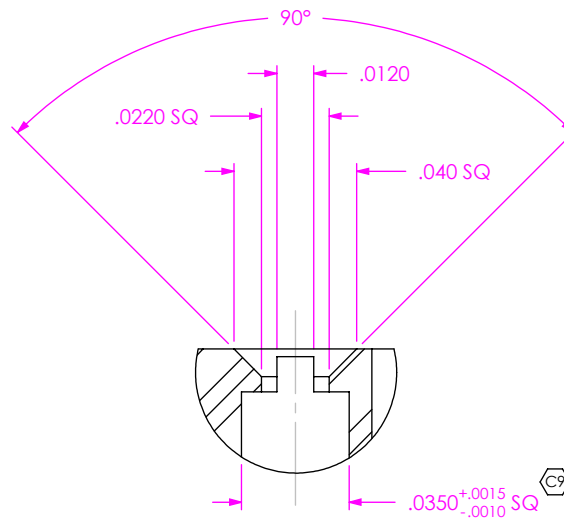
DWG. NO. ISDF-XX-D-X

BY: BRATCHER 5/4/2005

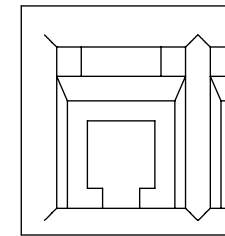
SHEET 1 OF 3



DETAIL 'E'
SCALE 16:1



DETAIL 'C'
SCALE 16:1



DETAIL 'D'
SCALE 16:1

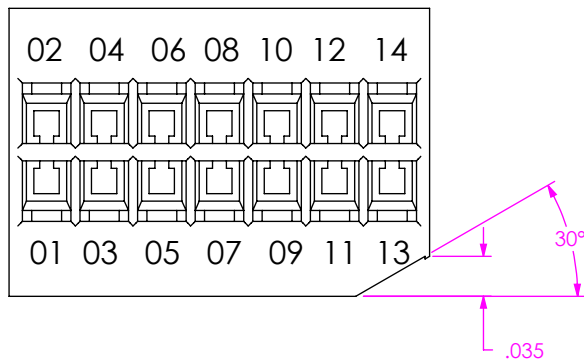


FIG. 2
ISDF-07-D-C SHOWN
SAME AS FIG. 1 UNLESS SPECIFIED

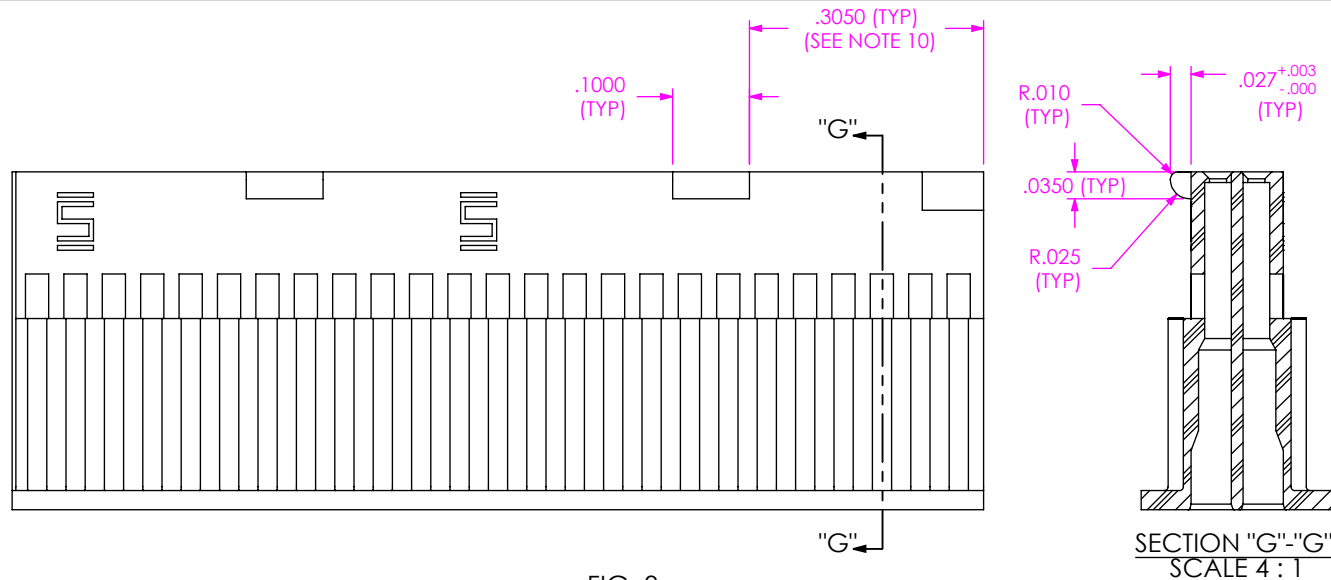


FIG. 3
ISDF-25-D-L SHOWN
SAME AS FIG. 1 EXCEPT AS SHOWN

SECTION "G"-"G"
SCALE 4:1

PROPRIETARY NOTE
THIS DOCUMENT CONTAINS INFORMATION
CONFIDENTIAL AND PROPRIETARY TO
SAMTEC, INC. AND SHALL NOT BE REPRODUCED
OR TRANSFERRED TO OTHER DOCUMENTS OR
DISCLOSED TO OTHERS OR USED FOR ANY
PURPOSE OTHER THAN THAT WHICH IT WAS
OBTAINED WITHOUT THE EXPRESSED WRITTEN
CONSENT OF SAMTEC, INC.

DO NOT SCALE DRAWING

SHEET SCALE: 1:0.166667

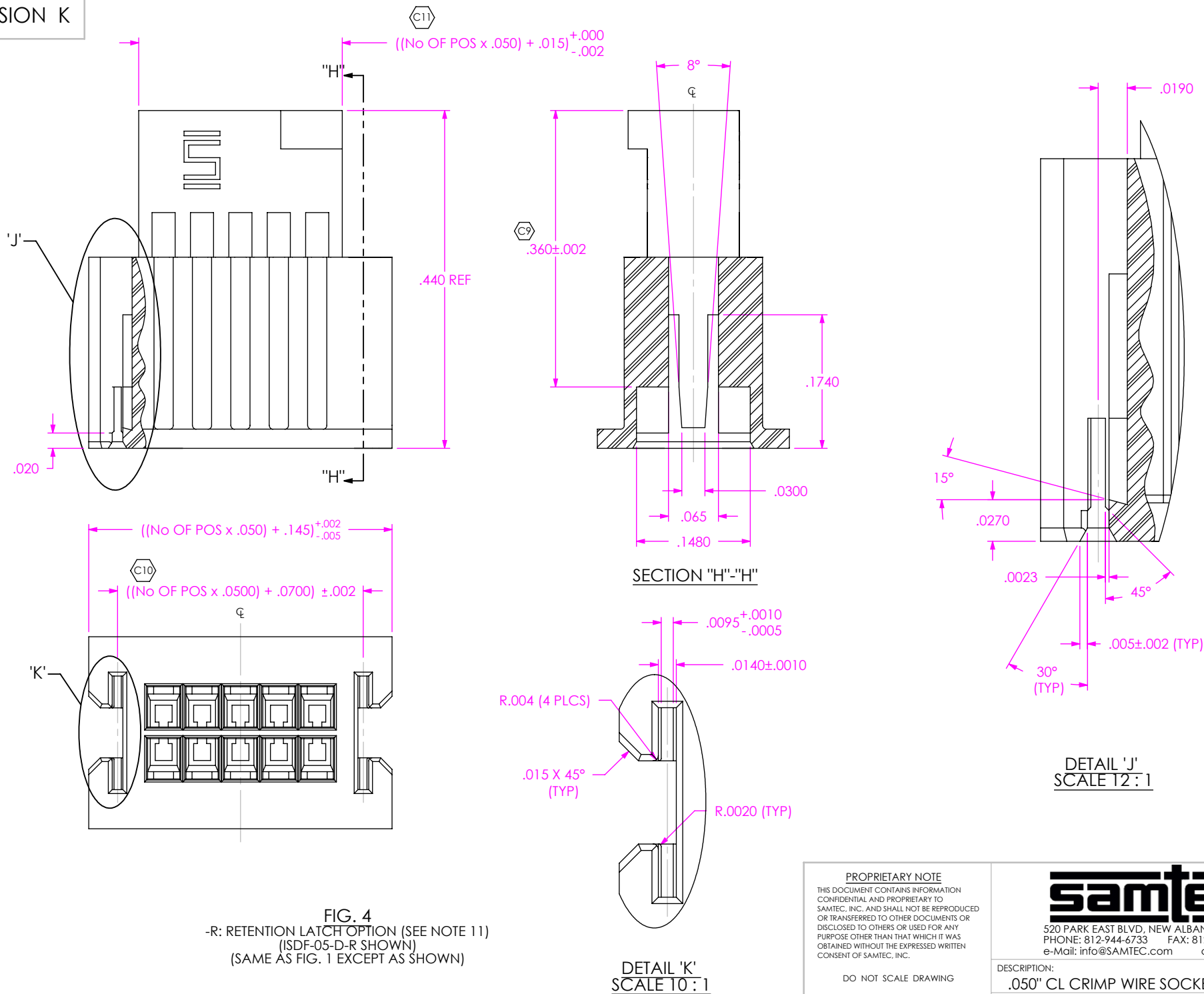
samtec

520 PARK EAST BLVD, NEW ALBANY, IN 47150
PHONE: 812-944-6733 FAX: 812-948-5047
e-Mail: info@SAMTEC.com code: 55322

DESCRIPTION:
.050" CL CRIMP WIRE SOCKET INSULATOR

DWG. NO.
ISDF-XX-D-X

BY: BRATCHER 5/4/2005 SHEET 2 OF 3



PROPRIETARY NOTE
THIS DOCUMENT CONTAINS INFORMATION
CONFIDENTIAL AND PROPRIETARY TO
SAMTEC, INC. AND SHALL NOT BE REPRODUCED
OR TRANSFERRED TO OTHER DOCUMENTS OR
DISCLOSED TO OTHERS OR USED FOR ANY
PURPOSE OTHER THAN THAT WHICH IT WAS
OBTAINED WITHOUT THE EXPRESSED WRITTEN
CONSENT OF SAMTEC, INC.

DO NOT SCALE DRAWING

SHEET SCALE: 6:1

samtec

520 PARK EAST BLVD, NEW ALBANY, IN 47150
PHONE: 812-944-6733 FAX: 812-948-5047
e-Mail: info@SAMTEC.com code: 55322

DESCRIPTION:
.050" CL CRIMP WIRE SOCKET INSULATOR

DWG. NO.
ISDF-XX-D-X

BY: BRATCHER 5/4/2005

SHEET 3 OF 3