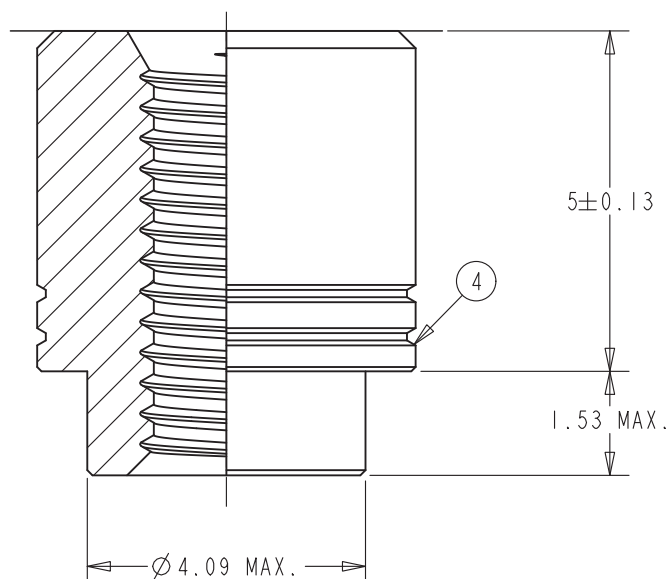
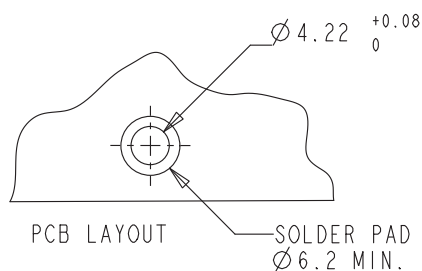
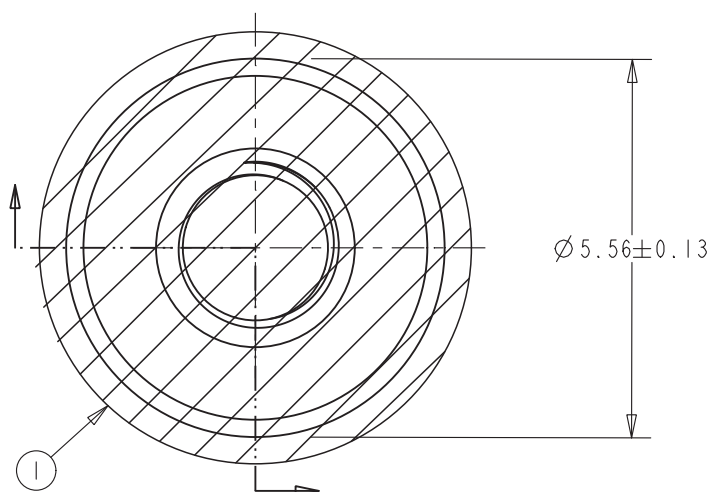


1- 1/4 DIA. POLYIMIDE PATCH
APPLIED TO THIS SURFACE
PER EIA-481

2- PARTS PER REEL = 750

3- TAPE PITCH = 12mm

4- MANUFACTURER'S REGISTERED
TRADEMARK.



SEE PEM TECHNICAL SUPPORT SECTION OF OUR WEBSITE (WWW.PEMNET.COM) FOR RELATED STANDARDS AND SPECIFICATIONS.

ALL DIMENSIONS IN MILLIMETERS.

© 2020 PennEngineering

NOTICE: CONFIDENTIAL PROPRIETARY INFORMATION. THIS PRINT CONTAINS IDEAS, INFORMATION, AND INTELLECTUAL PROPERTY WHICH ARE THE EXCLUSIVE PROPERTY OF PENNENGINEERING. RECIPIENT MUST KEEP THE INFORMATION DISCLOSED HEREIN CONFIDENTIAL AND RECIPIENT IS EXPRESSLY PROHIBITED FROM COPYING OR PUBLICATION OF THIS PRINT EXCEPT TO OTHERS IN THEIR ORGANIZATION ON A NEED-TO-KNOW BASIS. RECIPIENT FURTHER ACKNOWLEDGES THAT THIS INFORMATION IS NOT SUBJECT TO ANY PRIOR ASSIGNMENT, LICENSE AGREEMENT, IP OWNERSHIP AGREEMENT OR INVENTION/WORK AGREEMENT WITH ANY THIRD PARTY.

C	12-FEB-2020	20-0517
REV	DATE	ECN #

THREAD:	M2.5 x 0.45-6H	MOUNTING HOLE:	4.22 ^{+0.08} / ₀
MATERIAL:	CARBON STEEL	PANEL THICKNESS:	1.53 MIN.
CONDITION:	NOT APPLICABLE (N/A)	MAX. PANEL HARDNESS:	N/A
FINISH/COLOR:	ELECTRO-PLATED BRIGHT TIN	MIN. CENTERLINE-TO-EDGE:	N/A
FINISH SPEC.:	ASTM B545, CLASS A W/PRESERVATIVE COATING		
DESCRIPTION:	SURFACE-MOUNT, THRU-THREADED FASTENER		
MODEL PATH: _KFFX-CSTD /SMT-XX-D-CUST /SMT-4X-DMCST /C29-0105		SCALE: 9x	DWG NO. SMTSO-M25-5ET
		REV: C	