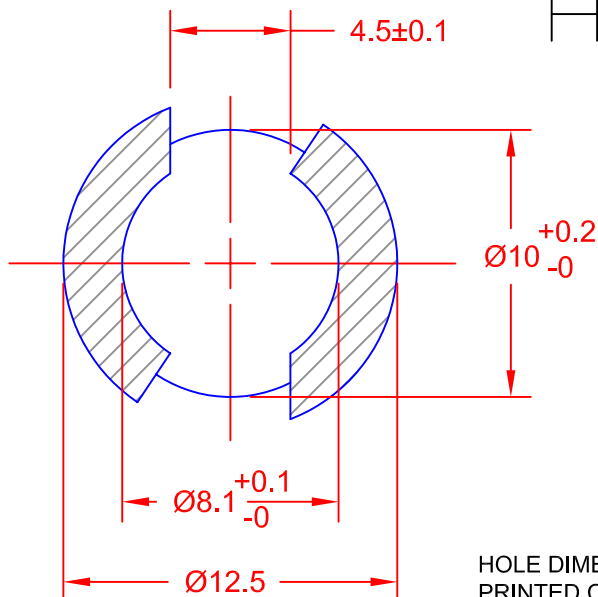
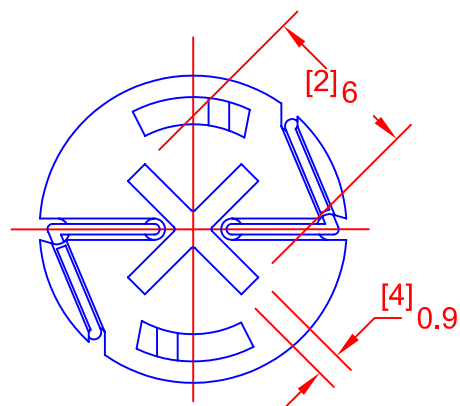
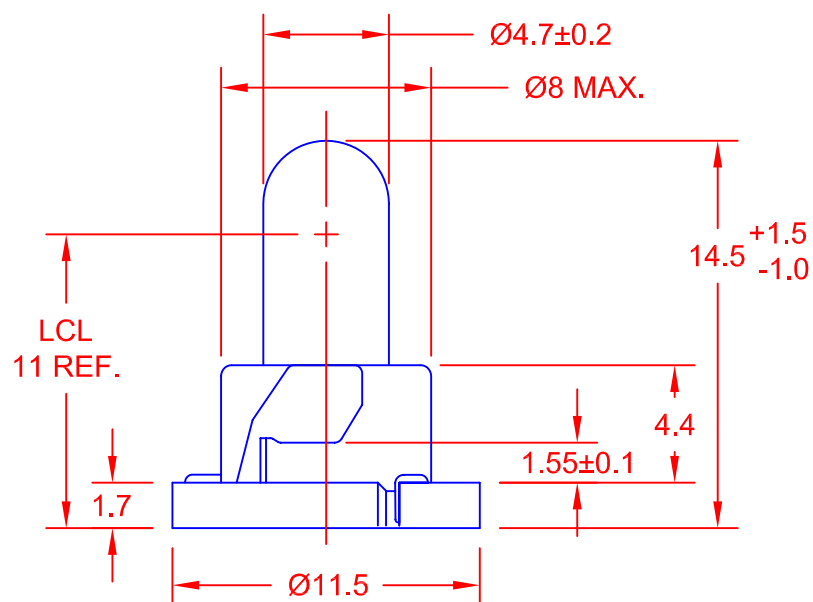
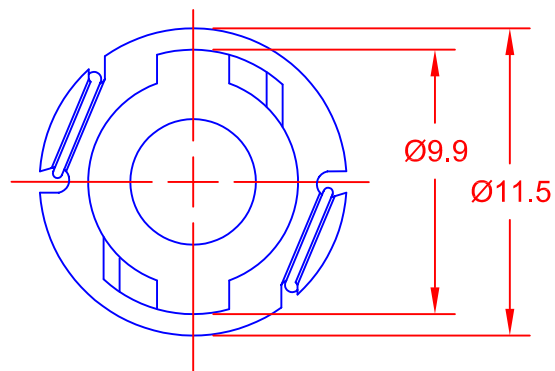


REV.	DESCRIPTION/ECO NO.	DATE
	RELEASED TO CAD	8/23/06



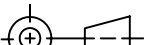
HOLE DIMENSION FOR THIS LAMP  
PRINTED CIRCUIT BOARD (t = 1.6)  
(NO TREATMENT SUCH AS APPLICATION  
OF FLUX, SHALL BE DONE.)

JKL PART NUMBER	VOLTS RATED	AMPS ±10%	*MSCP ±25%	*LUMENS ±25%	AVERAGE LIFE HRS.	FILAMENT TYPE
**ENW80-EW10/GRA/16MM	14.0	.100	.500	6.29	10,000	C-2F

\*LAMP RATED ONLY (NOT IN BASE).

\*\*RoHS COMPLIANCE.

BASE COLOR: GRAY

<div>METRIC</div> <div></div> <div>THIRD ANGLE PROJECTION</div>	DIMENSIONS ARE IN MILLIMETERS		<div>JKL COMPONENTS CORPORATION</div> <div>TITLE</div> <div>T-1 1/2 NEO-WEDGE BASE WITH EW10 LAMP</div>				
	TOLERANCE UNLESS OTHERWISE SPECIFIED 1 PL +/- 0.2 2 PL +/- 0.20 ANGLE +/- 0						
DRAWN BY L. WENGSTROM	APPV'D BY E.D.	DATE 6/23/06	SIZE A	FSCM NO. 55335	DRAWING NO. ENW80-EW10/GRA/16MM		
- CAD DRAWING - MANUAL REVISIONS NOT PERMITTED			SCALE NONE	RELEASED DATE 8/23/06	REVISION DATE	REV. NO.	SHEET 1 OF 1