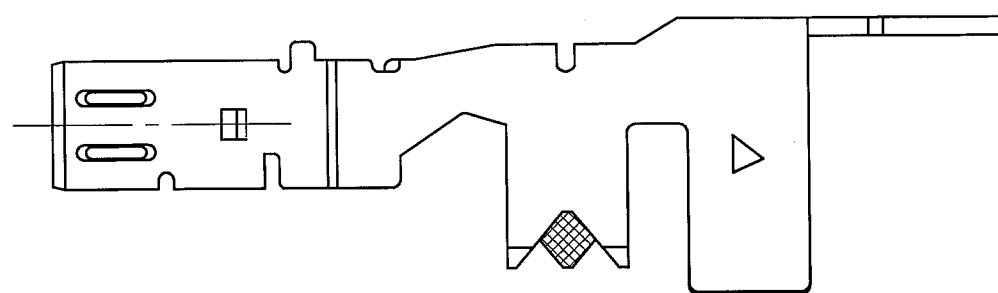
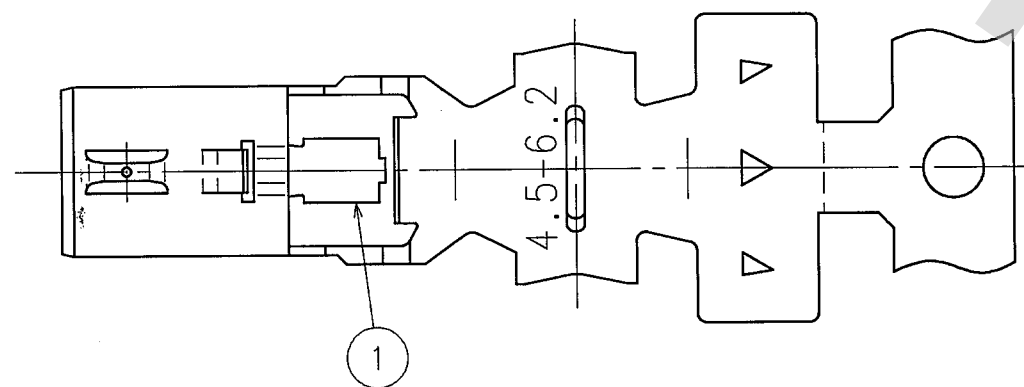
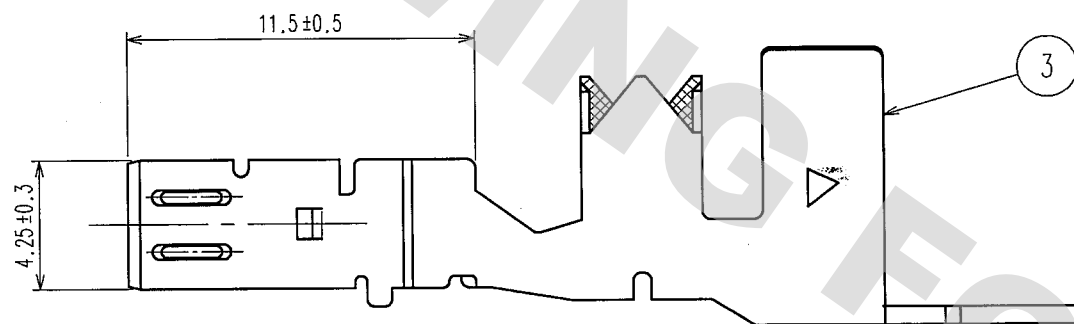
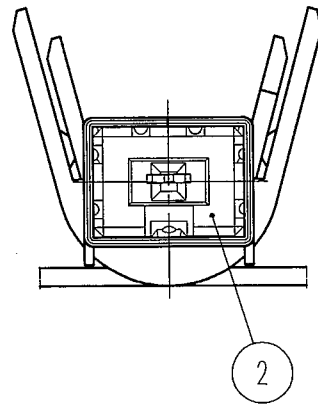
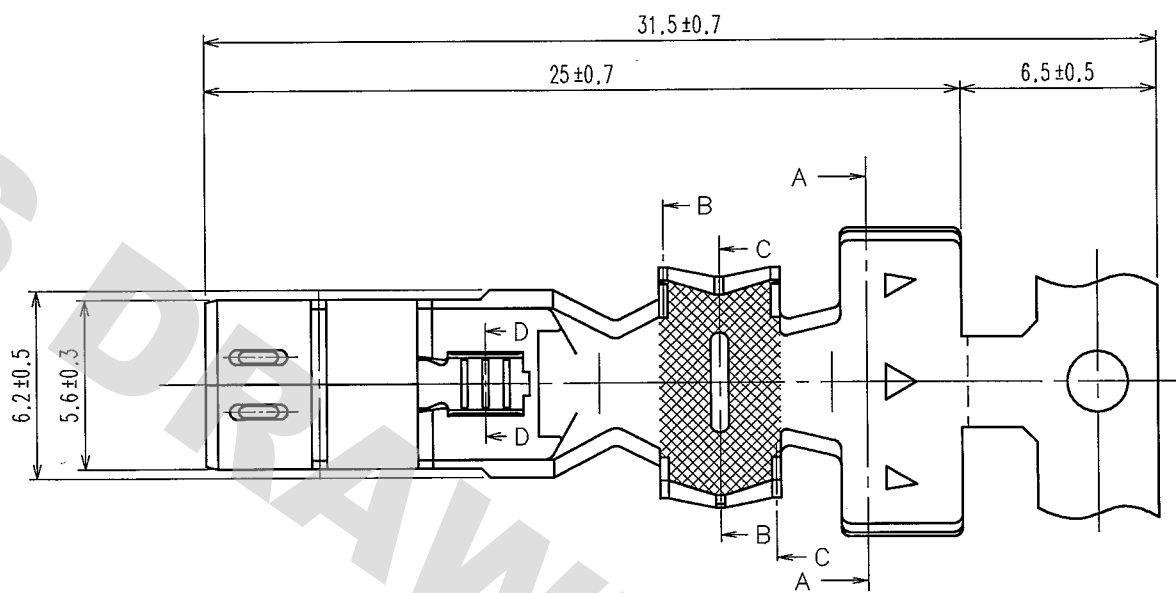


DRAWING FOR REFERENCE: This is subject to change without notice
08/11/2012

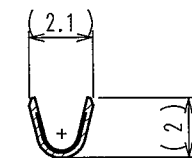
TO
AMC

ELV, RoHS COMPLIANT

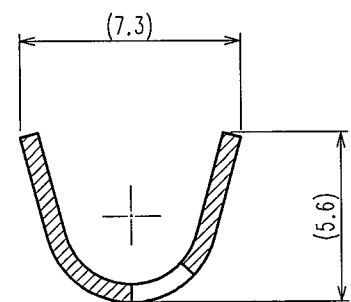


NOTE1. ONE REEL CONSISTS OF 1400 PIECES OF CONTACTS.

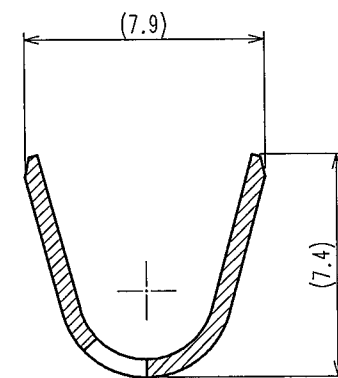
COUNT	DESCRIPTION OF REVISIONS	BY	CHKD	DATE	COUNT	DESCRIPTION OF REVISIONS	BY	CHKD	DATE



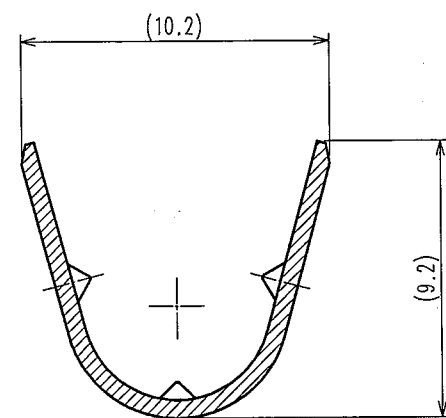
D-D



C-C



B-B



A-A

2	PBT	UL94HB	4		
1	COPPER ALLOY	TIN PLATING	3	COPPER ALLOY	TIN PLATING
NO.	MATERIAL	FINISH, REMARKS	NO.	MATERIAL	FINISH, REMARKS
CODE NO. (OLD)			DRAWN	DESIGNED	CHECKED
			M. OKADA	M. OKADA	K. Sato
			'05. 6. 14	'05. 6. 14	'05. 6. 14
			APPROVED		
			K. Sato		
DRAWING NO.			PART NO.		
EDC3-166439			GT13GM-2022/4.5-6.2SCF		
CODE NO.			CODE NO.		
CL763-0084-0			CL763-0084-0		
1/1			1/1		

SCALE
4 : 1
UNITS
mm

DRAWING NO.
EDC3-166439
HIROSE ELECTRIC CO., LTD

PART NO.
GT13GM-2022/4.5-6.2SCF
CODE NO.
CL763-0084-0
1/1