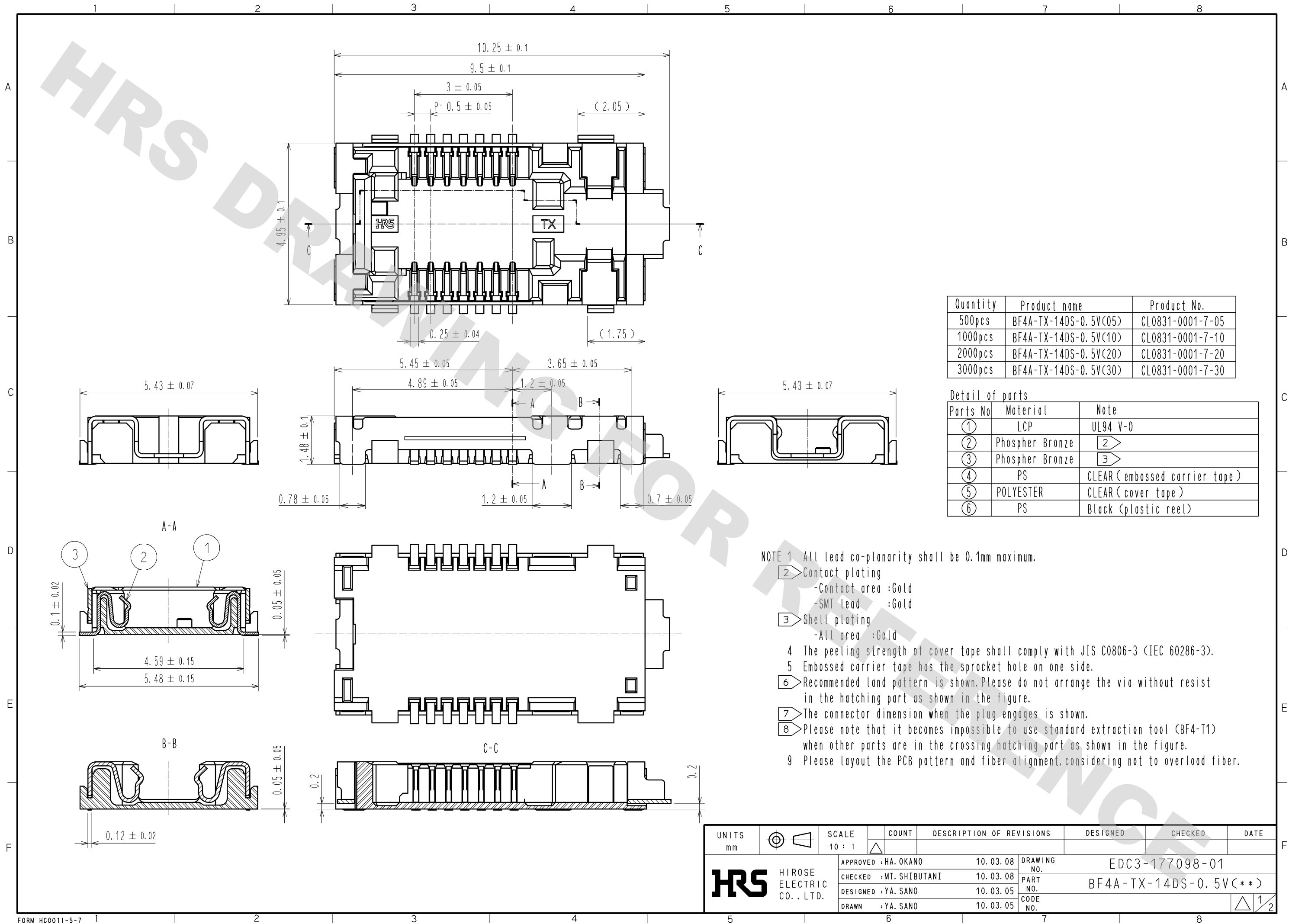


DRAWING FOR REFERENCE: This is subject to change without notice  
08/11/2012



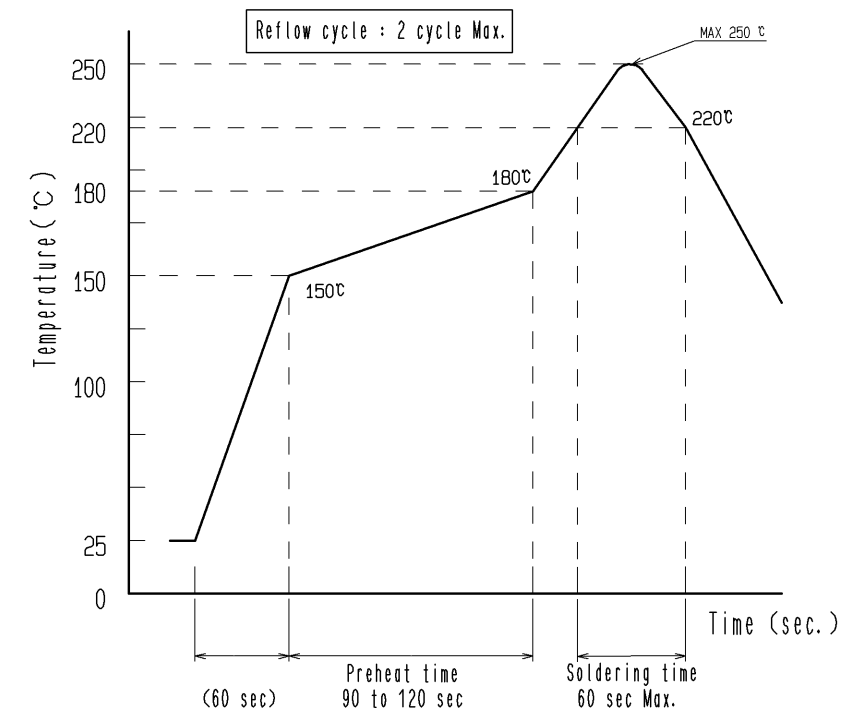
Dimensions of embossed carrier tape (Scale : FREE)

D-D

$$t = 0.3 \pm 0.05$$

Packing reel (Scale : FREE)

Recommended reflow temperature profile  
using Lead-Free solder paste.



Taping direction

Leader

Trailer

Empty pockets

Packing pockets

Empty pockets

Recommended PCB land pattern (10:1)

Recommended metal mask dimensions  
(Mask thickness : 120 μm)

Dimensions of engaged connector (5:1)

**HRS**

DRAWING NO.	EDC3-177098-01
PART NO.	BF4A-TX-14DS-0.5V(**)
CODE NO.	

2/2