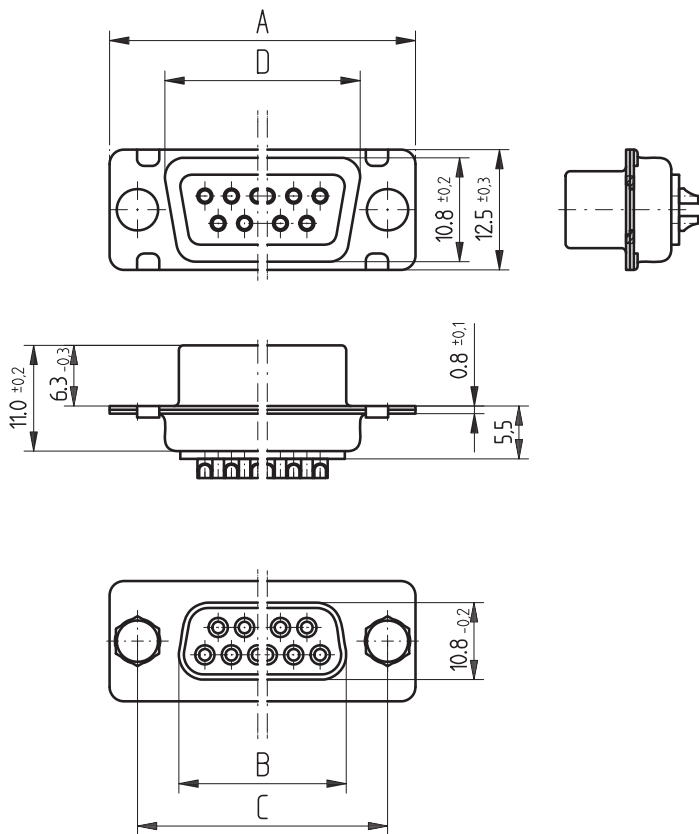


D-Sub Connectors

Female and Male Connectors with Solder Cups



Dimensional Drawing Female Connectors



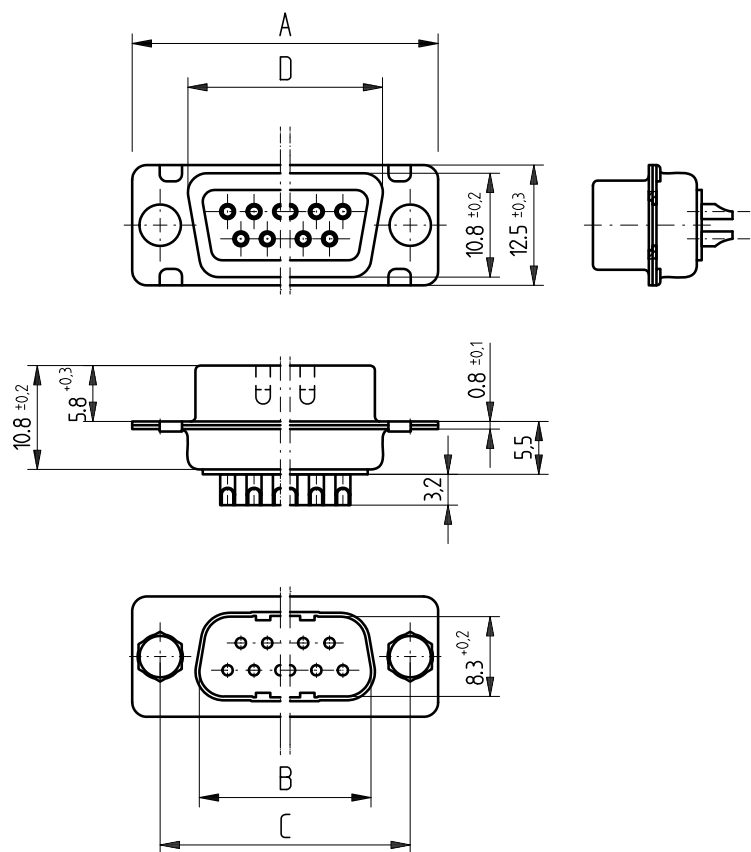
9	30.8	16.4	25.0	19.3
15	39.1	24.7	33.3	27.5
25	53.0	38.5	47.0	41.3
37	69.3	54.9	63.5	57.7
Polzahl/ No. of contacts	A ±0.3	B -0.2	C ±0.2	D ±0.3

All dimensions in mm

D-Sub Connectors

Female and Male Connectors with Solder Cups

Dimensional Drawing Male Connectors



9	30.8	16.8	25.0	19.3
15	39.1	25.1	33.3	27.5
25	53.0	38.9	47.0	41.3
37	69.3	55.3	63.5	57.7
Polzahl/ No. of contacts	A ± 0.3	B ± 0.2	C ± 0.2	D ± 0.3

All dimensions in mm

Ordering Information

Female Connectors

No. of Pins	Termination	Termination Length	Accessory Mating Side	Accessory Terminal Side	Packaging	Part Number
9	Hand solder*	2.5 mm	None	–	Cardboard (45 pcs)	004125
15	Hand solder*	2.5 mm	None	–	Cardboard (45 pcs)	013522
25	Hand solder*	2.5 mm	None	–	Cardboard (45 pcs)	013635
37	Hand solder*	2.5 mm	None	–	Cardboard (45 pcs)	004633

Male Connectors

No. of Pins	Termination	Termination Length	Accessory Mating Side	Accessory Terminal Side	Packaging	Part Number
9	Hand solder*	3.2 mm	None	–	Cardboard (45 pcs)	023127
15	Hand solder*	3.2 mm	None	–	Cardboard (45 pcs)	023128
25	Hand solder*	3.2 mm	None	–	Cardboard (45 pcs)	023129
37	Hand solder*	3.2 mm	None	–	Cardboard (45 pcs)	023130

* for max. AWG 18 solid or stranded wire