

MATERIAL SPECIFICATIONS

RECOMMENDED

BASE METAL - CDA-210, EXTRA SPRING TEMPER

- TIN PLATING (WHERE APPLICABLE TO 125°C MAX CONTINUOUS USAGE): 0.0050±0.0025 MM (200±100 >IN) ELECTROPLATED TIN.

- USAGE OF PLATING TYPES OTHER THAN RECOMMENDED MUST BE APPROVED BY DELPHI PACKARD ELECTRIC SYSTEMS ENGINEERING.

MINIMUMS

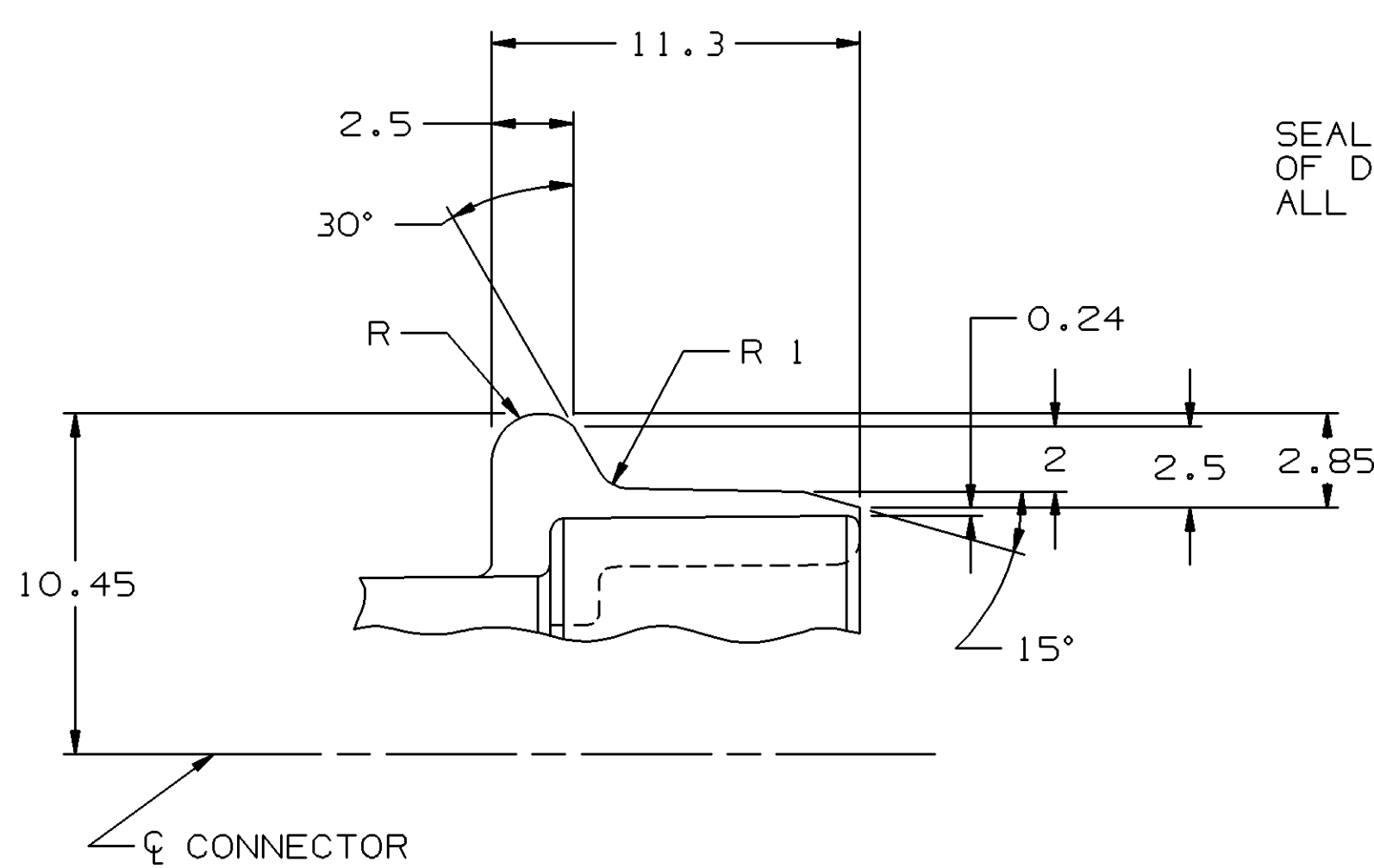
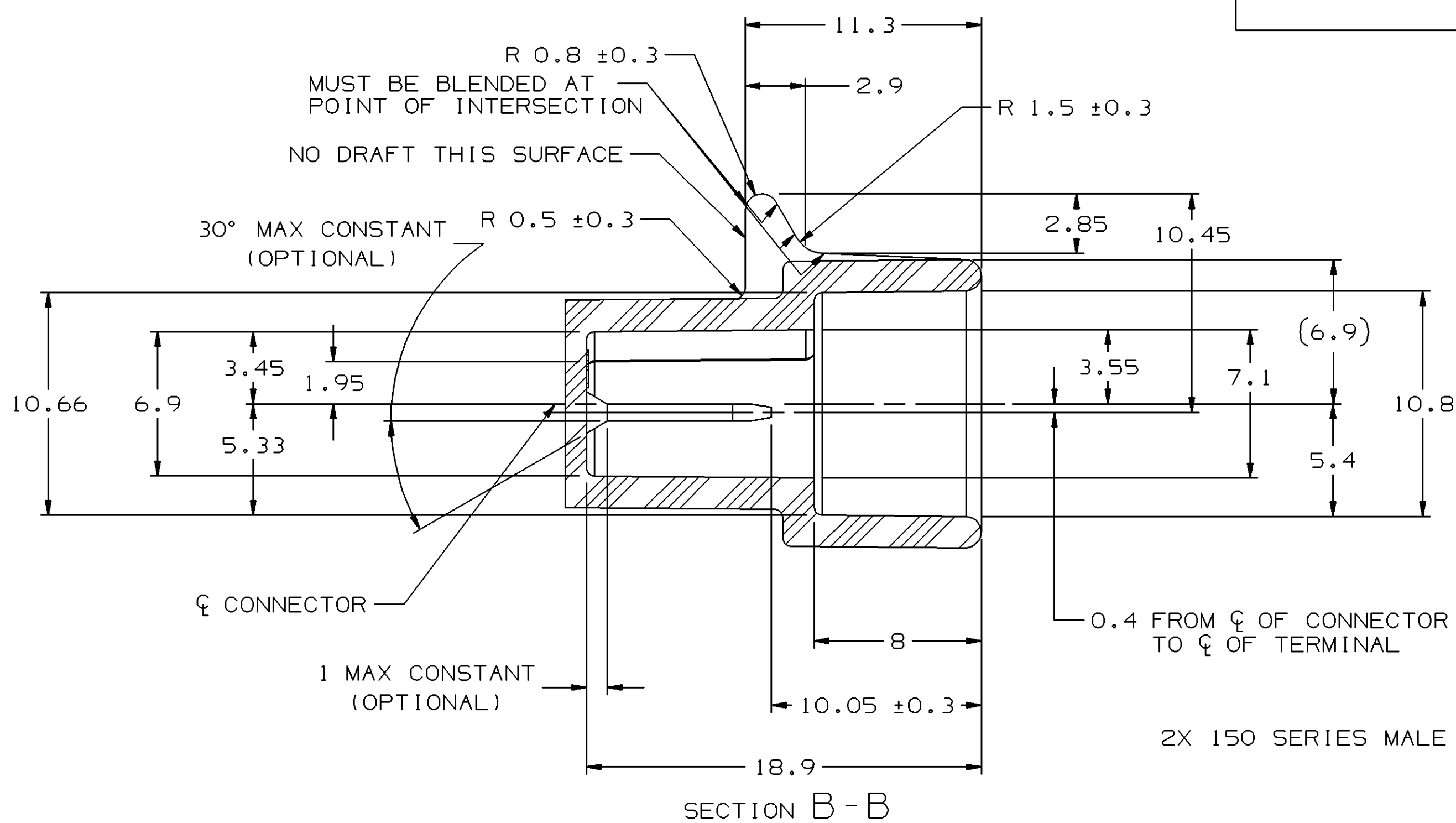
ELECTRICAL CONDUCTIVITY - ≥28% IACS AT 20 °C. USE OF A MATERIAL WITH CONDUCTIVITY <28% IACS MUST BE APPROVED BY PACKARD ELECTRIC MATERIALS ENGINEERING.

TENSILE STRENGTH - 430 - 480 MPa

UNDERPLATING FOR TIN PLATING - FOR BASE MATERIALS CONTAINING 10% OR MORE ZINC, AN UNDERPLATE OF COPPER 0.0025 MM (100 >IN) MINIMUM THICK IS REQUIRED.

PROCESSING LUBRICANT - ANY PROCESSING LUBRICANT REMAINING ON TERMINALS MUST NOT VARNISH OR DEGRADE THE ELECTRICAL PERFORMANCE OF THE CONNECTION UP TO A MAXIMUM TEMPERATURE OF 150°C. PROCESSING LUBRICANTS MUST BE APPROVED BY DELPHI PACKARD ELECTRIC SYSTEMS ENGINEERING.

MATING BLADE INFORMATION



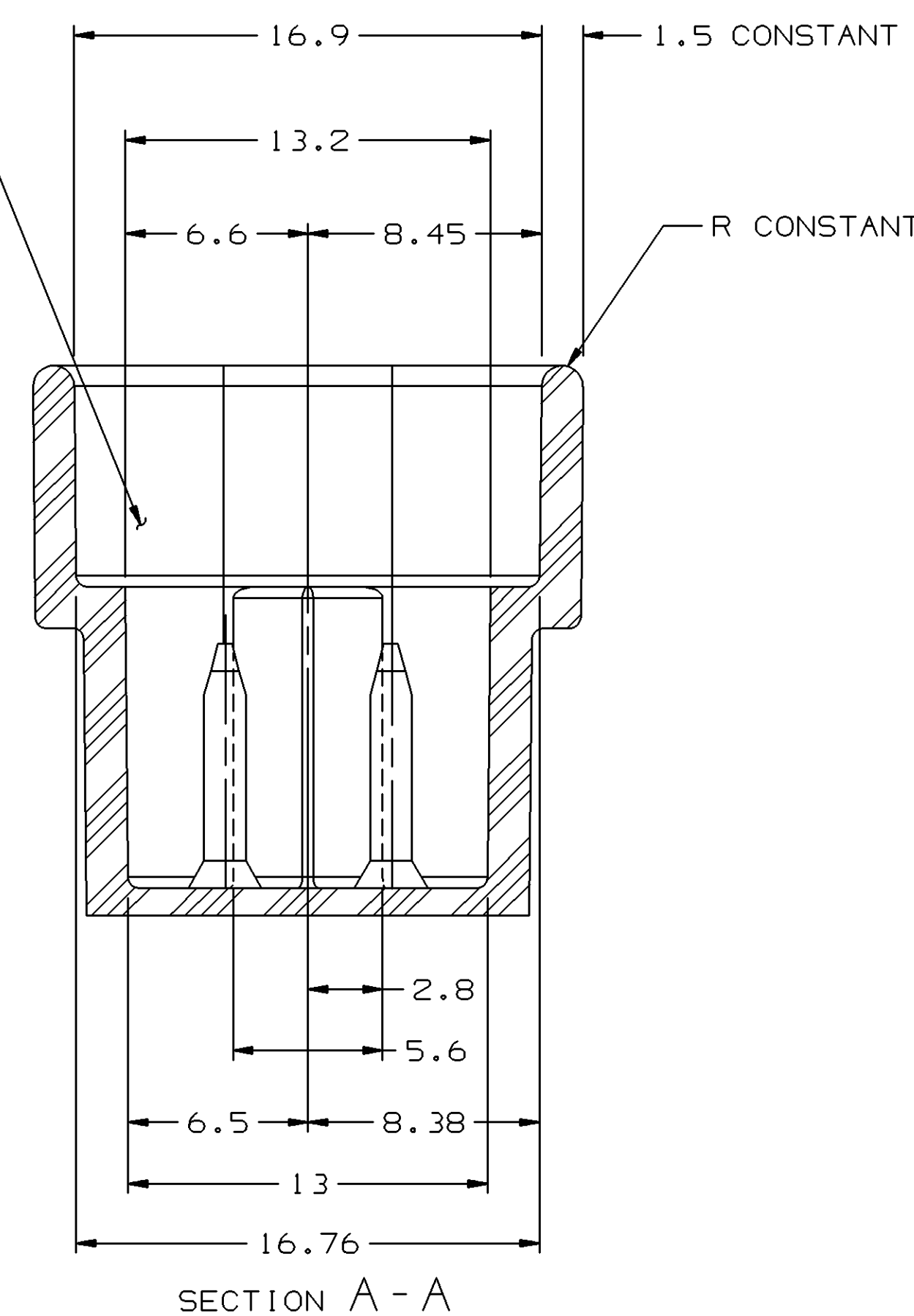
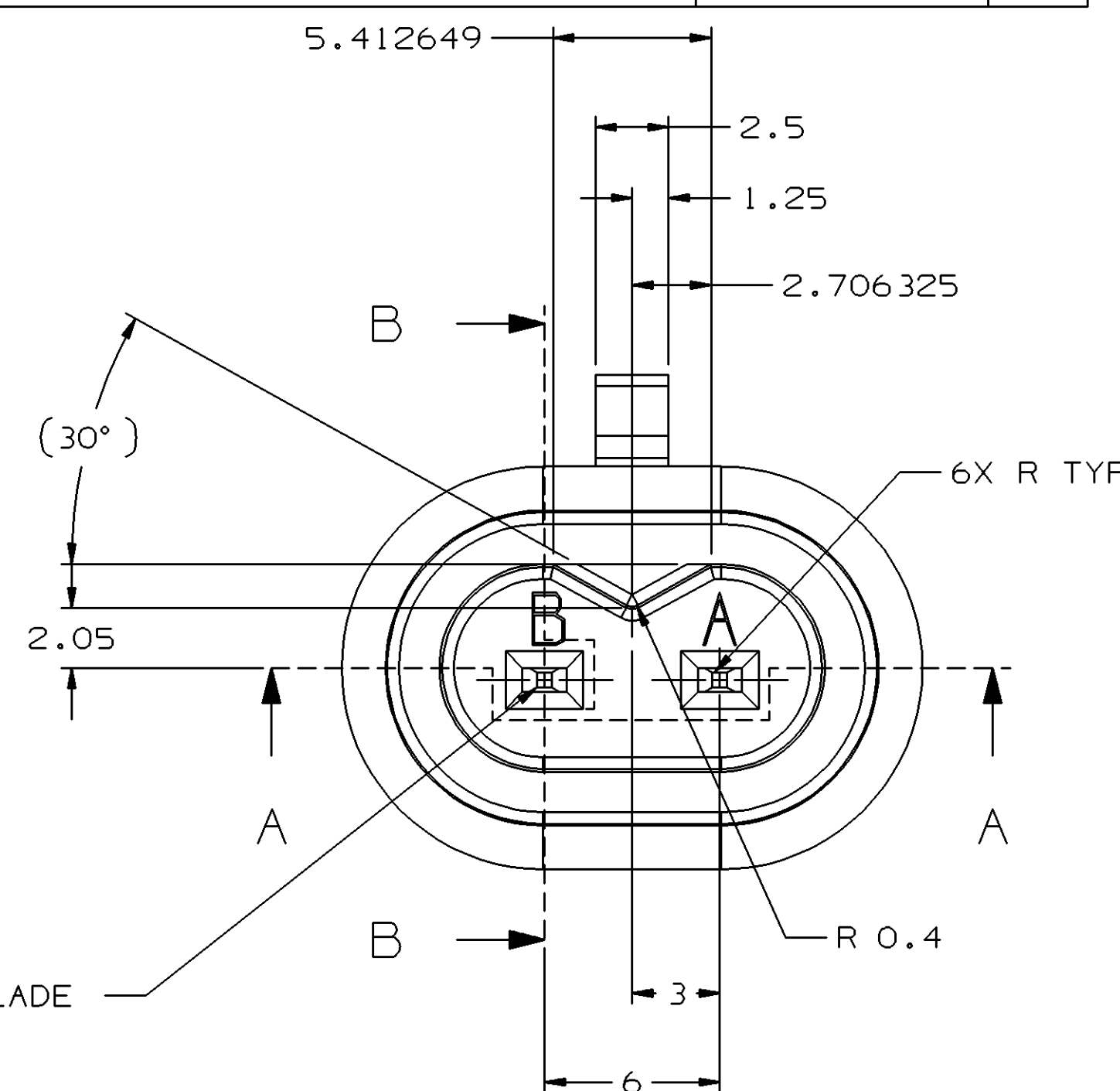
OPTIONAL CONSTRUCTION
MATING CONNECTOR INFORMATION

NOTES

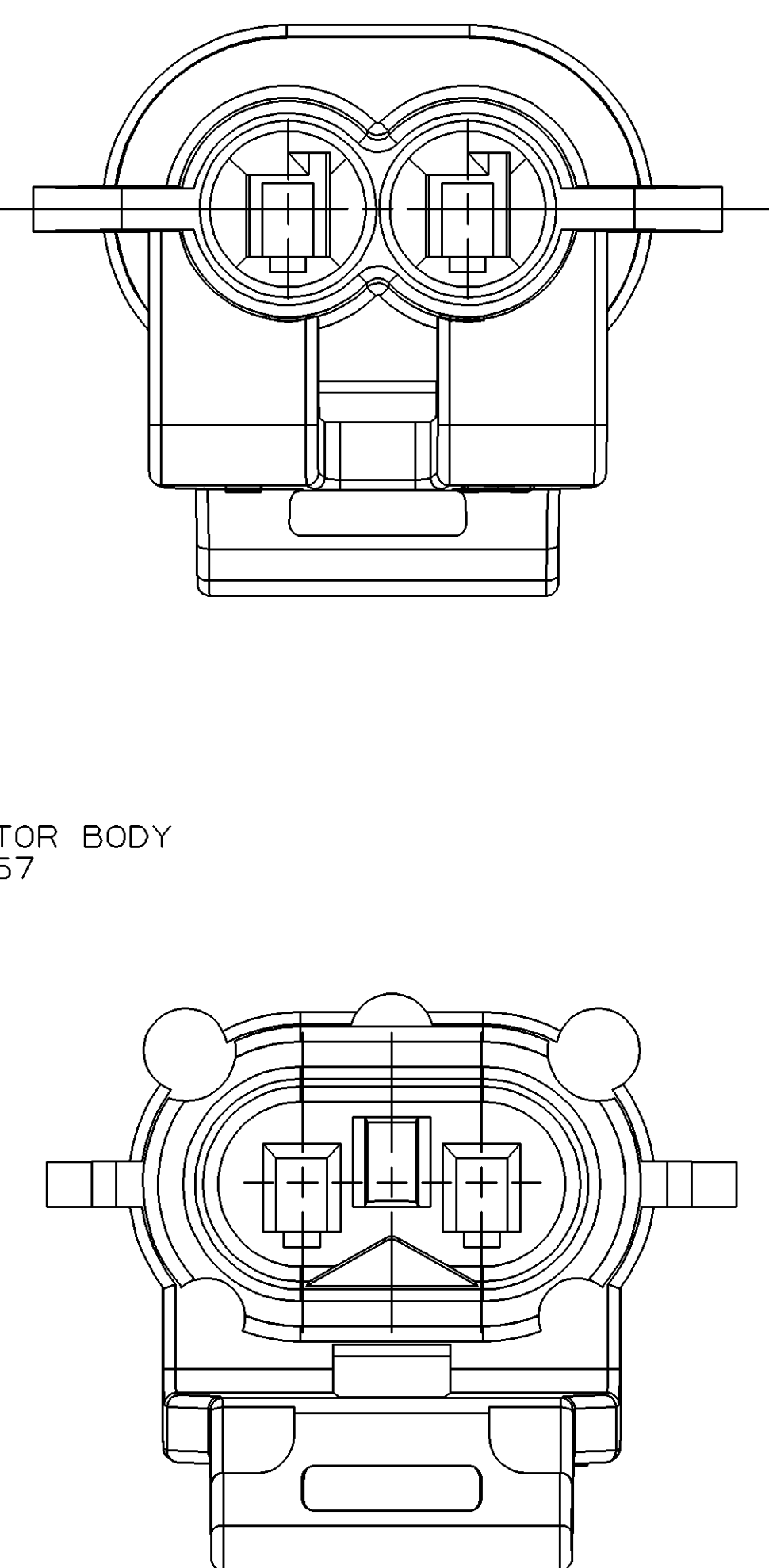
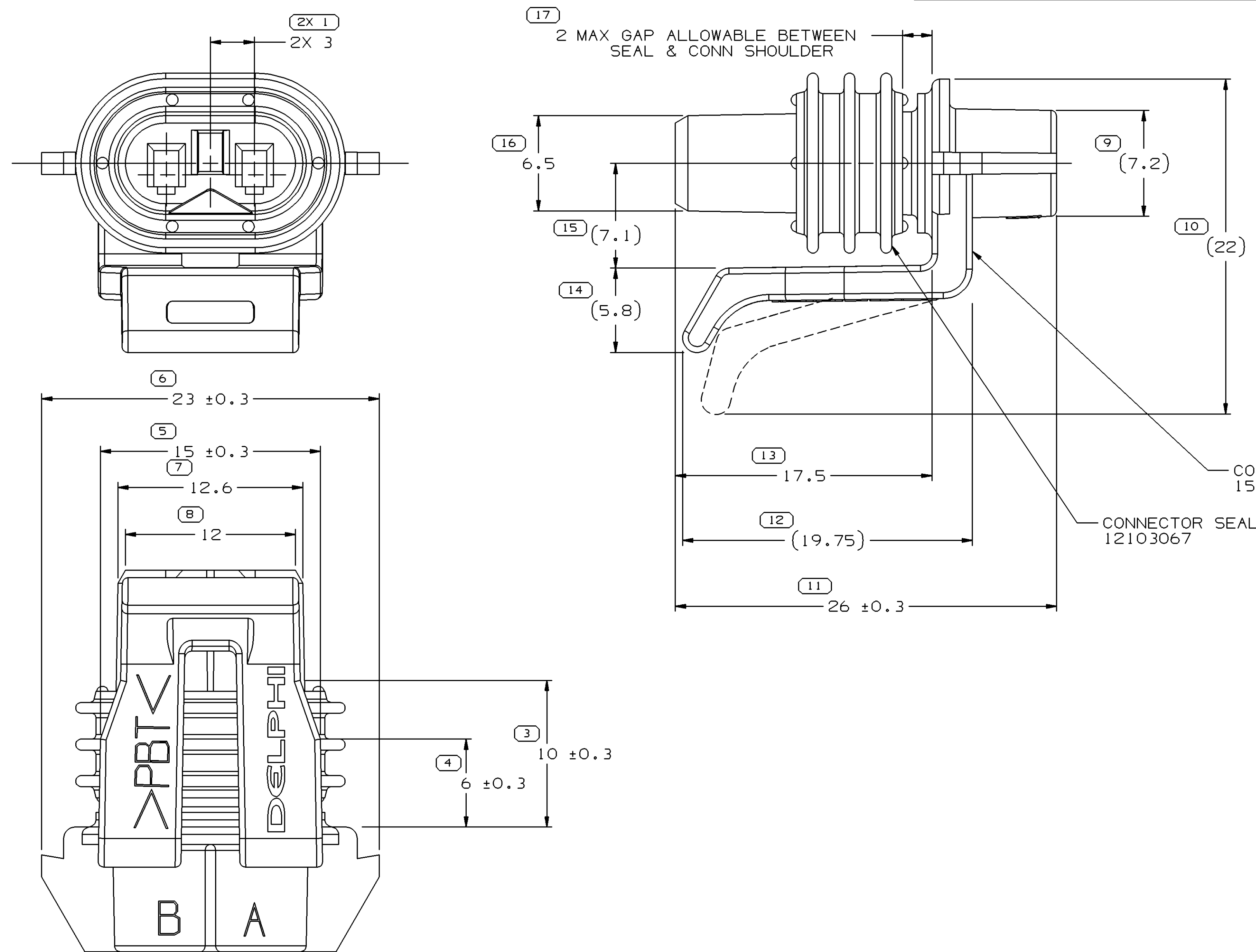
- ALL RADII 0.4, UNLESS OTHERWISE SPECIFIED
- RECOMMENDED MATERIAL - GLASS FILLED NYLON OR POLYESTER
- WHEN USING THIS INFORMATION FOR A NEW DESIGN, REQUEST THE LATEST COPY OF THIS PRINT FROM PACKARD ELECTRIC

SYMBOL DEFINITION		
A DIMENSION WITHOUT AN INSPECTION REPORT SYMBOL () DOES NOT REQUIRE INSPECTION. IT MAY BE CONTROLLED ON THE INDIVIDUAL COMPONENT DRAWING.	TOTAL NO OF INSPECTIONS REQUIRED	17
	LAST NO. USED	17

MISSING SYMBOLS		REVISION HISTORY		AUTH		DR		APVD	
2		WAS PE123937 AND RELEASED		252295		ADK		ADK	



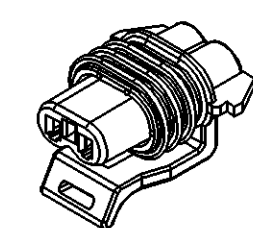
SECTION A - A



OPTIONAL KNOCKOUT PAD
CONSTRUCTION

NOTES

- UNLESS OTHERWISE SPECIFIED AND/OR INDICATED: DIMENSIONS ARE TO FACE OF VIEW SHOWN AND AUTOMATICALLY ROUNDED BY COMPUTER FOR INSPECTION (SEE MATH MODEL FOR PRECISE DIMENSIONS). FOR ALL OTHER DIMENSIONS NOT SHOWN BUT REQUIRED FOR TOOL BUILD, SEE MATH MODEL FOR PRECISE TOOL PATH DATA.
- SEALING CODE 3 - DESIGN WILL PASS SALT FOG AND IMMERSION TEST AFTER CONDITIONING AS SPECIFIED IN ESA-644 (WEATHER-PACK), ESA-710 (METRI-PACK), ESA-650 (UNDERHOOD MICRO-PACK), C-4006 (WORLD CONNECTOR), ETC WHEN MATED TO MATING PART OR EQUIVALENT
- THIS PART ACCEPTS THE FOLLOWING COMPONENTS OR EQUIVALENT:
CAVITIES TO ACCEPT TERMINAL - 12048074
CABLE SEAL - 12048086
SECONDARY LOCK - 15487369
MAXIMUM CABLE Ø 2.8 MM
- WHEN PARTS ARE SHIPPED, THEY MUST BE PACKED IN PLASTIC BAGS OR SHIPPING CONTAINERS MUST BE LINED WITH PLASTIC LINERS. BAGS OR LINERS MUST BE SEALED TO AVOID ENTRY OF FOREIGN MATTER.
- THIS CONNECTOR IS TO MATE WITH EPP SOLENOID OR EQUIVALENT.



		PROCESS SENSITIVE DIMENSION	
		DIMENSIONS ENCLOSED IN () INDICATE RETROFITTE DIMENSIONS AND NO TOLERANCE LIMITS ARE ESTABLISHED	
		CHART	
		TOLERANCE UNLESS OTHERWISE SPECIFIED	
		ANGULAR TOLERANCE ±2°	

DIMENSIONAL RANGE (MM)		CHART	
FROM	TO	TOLERANCE	
10	20	±0.2	
20	30	±0.4	
30	40	±0.5	
40	50	±0.6	
50	60	±0.8	
60	70	±1	
70	80	±1.2	
80	90	±1.5	
90	100	±2	
100	125	±2.5	
125	150	±3	
150	200	±4	
200	250	±5	
250	300	±6	
300	400	±8	
400	500	±10	
500	600	±12	
600	700	±15	
700	800	±20	
800	900	±25	
900	1000	±30	
1000	1250	±40	
1250	1500	±50	
1500	2000	±60	
2000	2500	±75	
2500	3000	±90	
3000	4000	±110	
4000	5000	±140	
5000	6000	±180	
6000	7000	±220	
7000	8000	±280	
8000	9000	±350	
9000	10000	±450	
10000	12500	±550	
12500	15000	±700	
15000	20000	±900	
20000	25000	±1100	
25000	30000	±1400	
30000	40000	±1800	
40000	50000	±2200	
50000	60000	±2800	
60000	70000	±3500	
70000	80000	±4500	
80000	90000	±5500	
90000	100000	±7000	
100000	125000	±9000	
125000	150000	±11000	
150000	200000	±14000	
200000	250000	±18000	
250000	300000	±22000	
300000	400000	±28000	
400000	500000	±35000	
500000	600000	±45000	
600000	700000	±55000	
700000	800000	±70000	
800000	900000	±90000	
900000	1000000	±110000	
1000000	1250000	±140000	
1250000	1500000	±180000	
1500000	2000000	±220000	
2000000	2500000	±280000	
2500000	3000000	±350000	
3000000	4000000	±450000	
4000000	5000000	±550000	
5000000	6000000	±700000	
6000000	7000000	±900000	
7000000	8000000	±1100000	
8000000	9000000	±1400000	
9000000	10000000	±1800000	
10000000	12500000	±2200000	
12500000	15000000	±2800000	
15000000	20000000	±3500000	
20000000	25000000	±4500000	
25000000	30000000	±5500000	
30000000	40000000	±7000000	
40000000	50000000	±9000000	
50000000	60000000	±11000000	
60000000	70000000	±14000000	
70000000	80000000	±18000000	
80000000	90000000	±22000000	
90000000	100000000	±28000000	
100000000	125000000	±35000000	
125000000	150000000	±45000000	
150000000	200000000	±55000000	
200000000	250000000	±70000000	
250000000	300000000	±90000000	
300000000	400000000	±110000000	
400000000	500000000	±140000000	
500000000	600000000	±180000000	
600000000	700000000	±220000000	
700000000	800000000	±280000000	
800000000	900000000	±350000000	
900000000	1000000000	±450000000	
1000000000	1250000000	±550000000	
1250000000	1500000000	±700000000	
1500000000	2000000000	±900000000	
2000000000	2500000000	±1100000000	
2500000000	3000000000	±1400000000	
3000000000	4000000000	±1800000000	
4000000000	5000000000	±2200000000	
5000000000	6000000000	±2800000000	
6000000000	7000000000	±3500000000	
7000000000	8000000000	±4500000000	
8000000000	9000000000	±5500000000	
9000000000	10000000000	±7000000000	
10000000000	12500000000	±9000000000	
12500000000	15000000000	±11000000000	
15000000000	20000000000	±14000000000	
20000000000	25000000000	±18000000000	
25000000000	30000000000	±22000000000	
30000000000	40000000000	±28000000000	
40000000000	50000000000	±35000000000	
50000000000	60000000000	±45000000000	
60000000000	70000000000	±55000000000	
70000000000	80000000000	±70000000000	
80000000000	90000000000	±90000000000	
90000000000	100000000000	±110000000000	
100000000000	125000000000	±140000000000	
125000000000	150000000000	±180000000000	
150000000000	200000000000	±220000000000	
200000000000	250000000000	±280000000000	
250000000000	300000000000	±350000000000	
300000000000	400000000000	±450000000000	
400000000000	500000000000	±550000000000	
500000000000	600000000000	±700000000000	
600000000000	700000000000	±900000000000	
700000000000	800000000000	±1100000000000	
800000000000	900000000000	±1400000000000	
900000000000	1000000000000	±1800000000000	
1000000000000	1250000000000	±2200000000000	
1250000000000	1500000000000	±2800000000000	
1500000000000	2000000000000	±3500000000000	
2000000000000	2500000000000	±4500000000000	
2500000000000	3000000000000	±5500000000000	
3000000000000	4000000000000	±7000000000000	
4000000000000	5000000000000	±9000000000000	
5000000000000	6000000000000	±11000000000000	
6000000000000	7000000000000	±14000000000000	
7000000000000	8000000000000	±18000000000000	
8000000000000	9000000000000	±22000000000000	
9000000000000	10000000000000	±28000000000000	
10000000000000	12500000000000	±35000000000000	
12500000000000	15000000000000	±45000000000000	
15000000000000	20000000000000	±55000000000000	
20000000000000	25000000000000	±70000000000000	
25000000000000	30000000000000	±90000000000000	
30000000000000	40000000000000	±110000000000000	
40000000000000	50000000000000	±140000000000000	
50000000000000	60000000000000	±180000000000000	
60000000000000	70000000000000	±220000000000000	
70000000000000	80000000000000	±280000000000000	
80000000000000	90000000000000	±350000000000000	
90000000000000	100000000000000	±450000000000000	
100000000000000	125000000000000	±550000000000000	
125000000000000	150000000000000	±700000000000000	
150000000000000	200000000000000	±900000000000000	
200000000000000	250000000000000	±1100000000000000	
250000000000000	300000000000000	±1400000000000000	
300000000000000	400000000000000	±1800000000000000	
400000000000000	500000000000000	±2200000000000000	
500000000000000	600000000000000	±2800000000000000	
600000000000000	700000000000000	±3500000000000000	
700000000000000	800000000000000	±4500000000000000	
800000000000000	900000000000000	±5500000000000000	
900000000000000	1000000000000000	±7000000000000000	
1000000000000000	1250000000000000	±9000000000000000	
1250000000000000	1500000000000000	±11000000000000000	
1500000000000000	2000000000000000	±14000000000000000	
2000000000000000	2500000000000000	±18000000000000000	
2500000000000000	3000000000000000	±22000000000000000	
3000000000000000	4000000000000000	±28000000000000000	
4000000000000000	5000000000000000	±35000000000000000	
5000000000000000	6000000000000000	±45000000000000000	
6000000000000000	7000000000000000	±55000000000000000	
7000000000000000	8000000000000000	±70000000000000000	
8000000000000000	9000000000000000	±90000000000000000	
9000000000000000	10000000000000000	±110000000000000000	
10000000000000000	12500000000000000	±140000000000000000	
12500000000000000	15000000000000000	±180000000000000000	
15000000000000000	20000000000000000	±220000000000000000	
20000000000000000	25000000000000000	±280000000000000000	
25000000000000000	30000000000000000	±350000000000000000	
30000000000000000	40000000000000000	±450000000000000000	
40000000000000000	50000000000000000	±550000000000000000	
50000000000000000	60000000000000000	±700000000000000000	
60000000000000000	70000000000000000	±900000000000000000	
70000000000000000	80000000000000000	±1100000000000000000	
80000000000000000	90000000000000000	±1400000000000000000	
90000000000000000	100000000000000000	±1800000000000000000	
100000000000000000	125000000000000000	±2200000000000000000	
125000000000000000	150000000000000000	±2800000000000000000	
150000000000000000	200000000000000000	±3500000000000000000	
200000000000000000	250000000000000000	±4500000000000000000	
250000000000000000	300000000000000000	±5500000000000000000	
300000000000000000	400000000000000000	±7000000000000000000	
400000000000000000	500000000000000000	±9000000000000000000	
500000000000000000	600000000000000000	±11000000000000000000	
600000000000000000	700000000000000000	±14000000000000000000	
700000000000000000	800000000000000000	±18000000000000000000	
800000000000000000	900000000000000000	±22000000000000000000	
900000000000000000	1000000000000000000	±28000000000000000000	
1000000000000000000	1250000000000000000	±35000000000000000000	
1250000000000000000	1500000000000000000	±45000000000000000000	
1500000000000000000	2000000000000000000	±55000000000000000000	
2000000000000000000	2500000000000000000	±70000000000000000000	
2500000000000000000	3000000000000000000	±90000000000000000000	
3000000000000000000	4000000000000000000	±110000000000000000000	
4000000000000000000	5000000000000000000	±140000000000000000000	
5000000000000000000	6000000000000000000	±180000000000000000000	
6000000000000000000	7000000000000000000	±220000000000000000000	
7000000000000000000	8000000000000000000	±280000000000000000000	
8000000000000000000	9000000000000000000	±350000000000000000000	
9000000000000000000	10000000000000000000	±450000000000000000000	
10000000000000000000	12500000000000000000	±550000000000000000000	
12500000000000000000	15000000000000000000	±700000000000000000000	
15000000000000000000	20000000000000000000	±900000000000000000000	