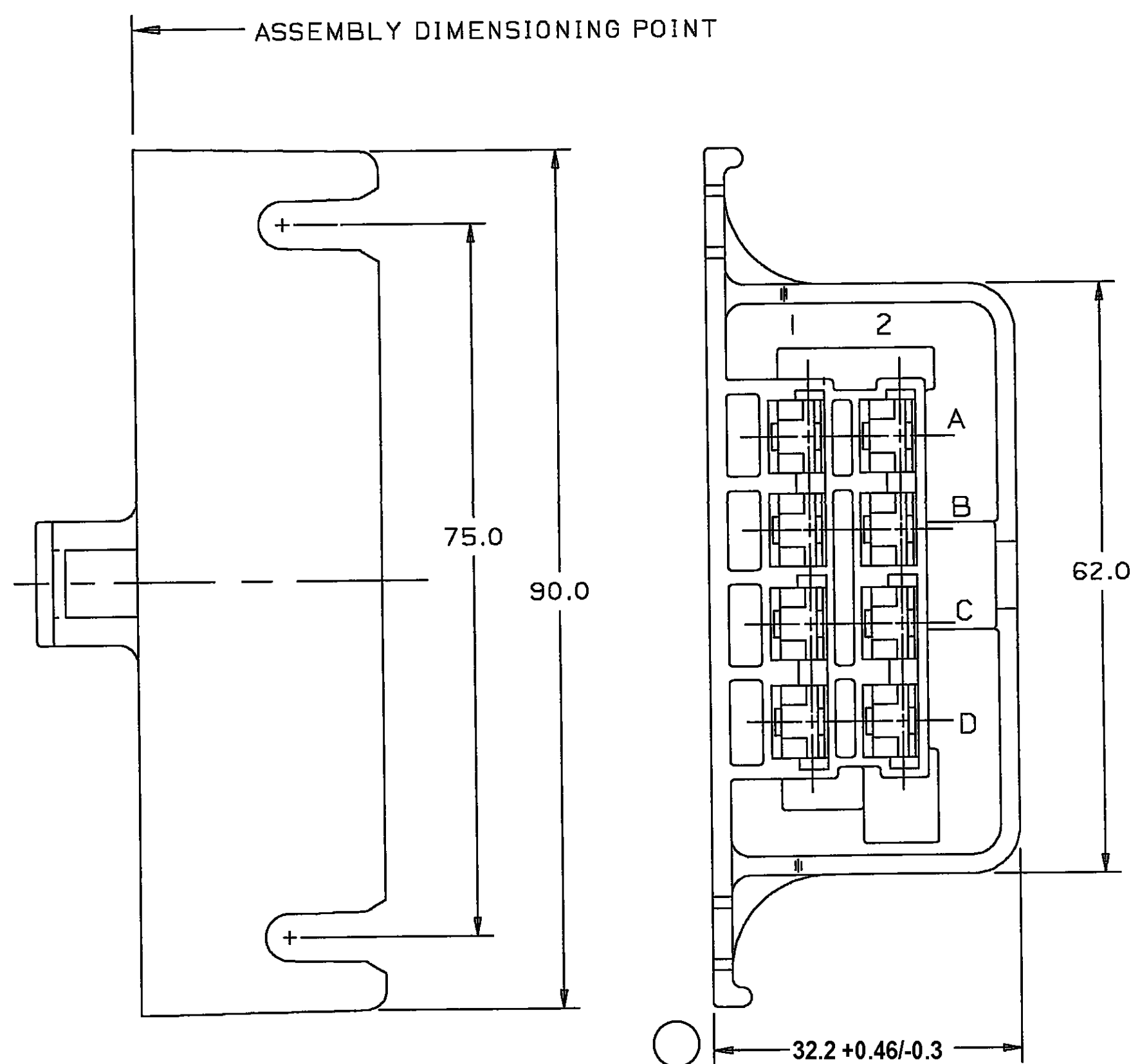
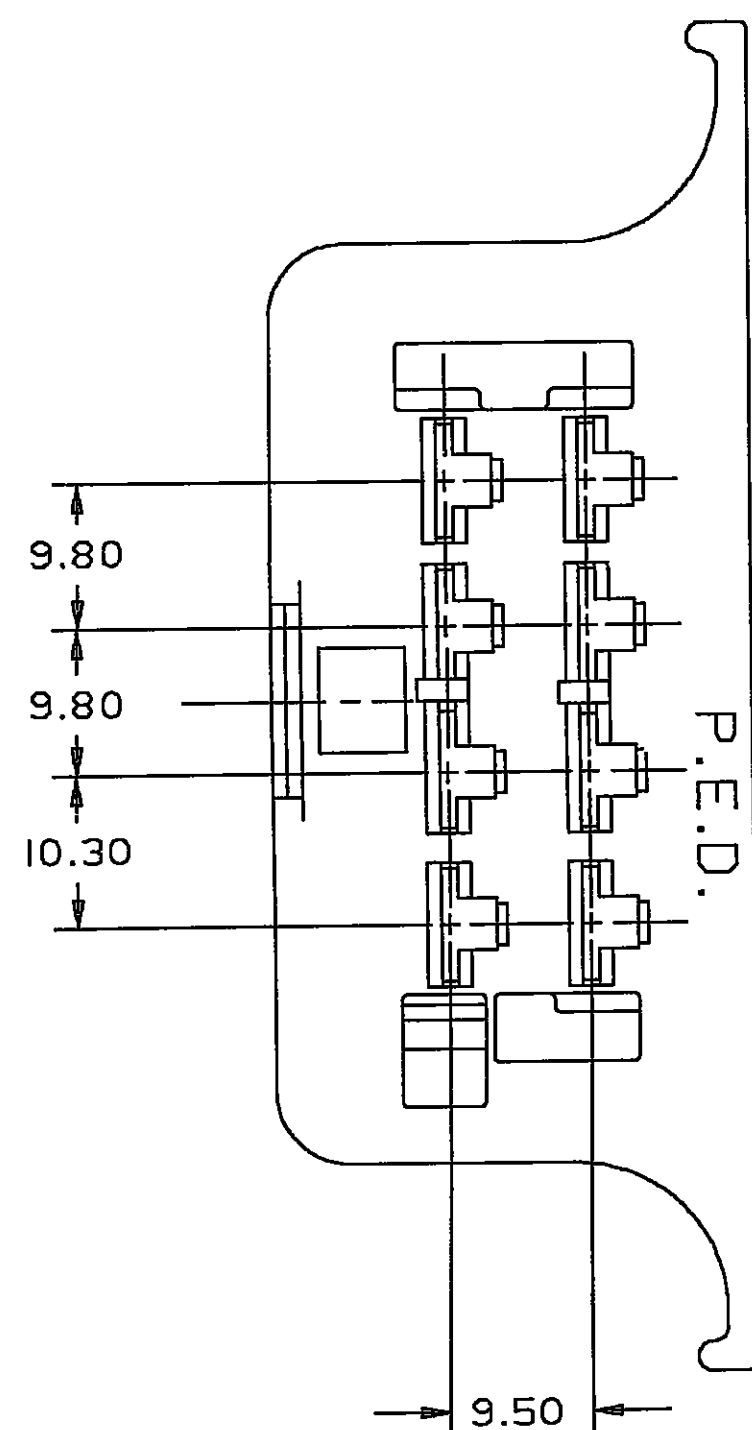
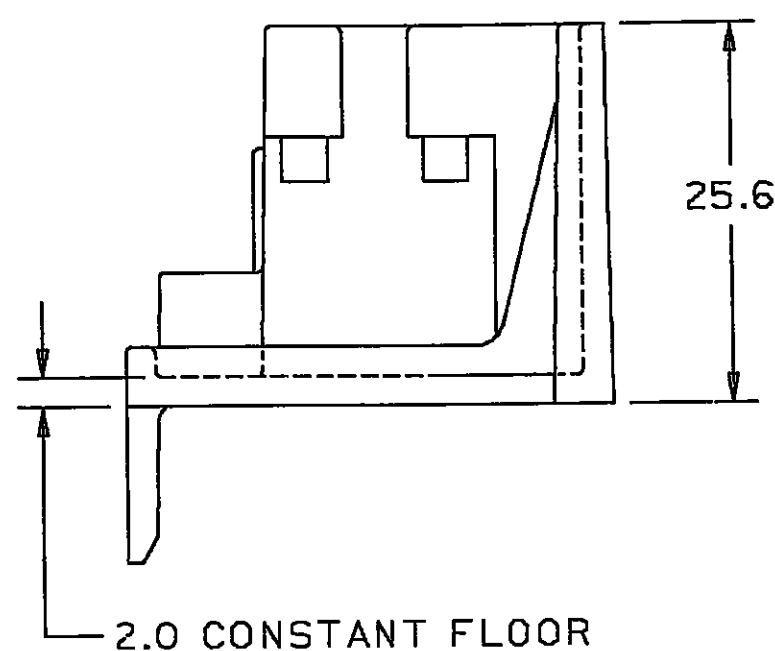


THIS DRAWING AND DESIGN HEREON CON-
STITUTES A PROPRIETARY DESIGN OF
PACKARD ELECTRIC DIVISION AND IS NOT
TO BE DUPLICATED OR REPRODUCED WITH-
OUT AUTHORITY OF PACKARD ELECTRIC
DIVISION.

DO NOT SCALE

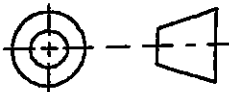


- NOTES———
1. CAVITIES TO ACCEPT I20I5869 TERMINAL OR EQUIVALENT.
 2. CONNECTOR TO ACCEPT SECONDARY LOCK I20I5676 OR EQUIVALENT.
 3. THIS PART IS DESIGNED FOR A BLADE 12.2±0.5 LONG.
 4. MATERIAL RECYCLING CODE PER ISO 11469. (2.3) X (0.1) RAISED CHARACTERS AS SHOWN TO BE LOCATED ON ANY EXTERIOR SURFACE. OPTIONAL CONSTRUCTION TO BE NO MATERIAL RECYCLING CODE.
 5. 2 MIN X 0.1 MIN RAISED DELPHI CORPORATE BRAND TO BE LOCATED ON ANY EXTERIOR SURFACE, PREFERABLY VISIBLE AT FINAL ASSEMBLY. OPTIONAL CONSTRUCTION TO BE "PED" OR NO LOGO.

[illegible]

DRAWING NO.	1203	3609
-------------	------	------

C06D1979

<h1>METRIC</h1> <p>DIMENSIONS ARE IN MILLIMETERS UNLESS OTHERWISE SPECIFIED</p>		THIRD ANGLE PROJECTION 	
CODE NO. 6900		TOLERANCE UNLESS OTHERWISE SPECIFIED DECIMAL : ONE PLACE ± 0.3 TWO PLACE ± 0.15	
QC		ANGULAR ± 2°	
DWG. DATE 17N081	SCALE NONE	DR. J.E.THEISS	04DE81
CD.C.M.P.F.8.12033609.00		CK. R.GLEASON	DATE 18JA82
REPER. NO. 12033609 "D" SIZE		APPR E.BUNGO	DATE 18JA82
MATERIAL SPEC.		APPR.	DATE
M0661002 PP BLK			
NAME CONN 8F M/P 630			
PART NO.	1203 3609		SIZE 0
OUTLINE DRAWING			

PACKARD ELECTRIC

PACKARD ELECTRIC DIVISION
GENERAL MOTORS CORPORATION
WARREN, OHIO

197-A