
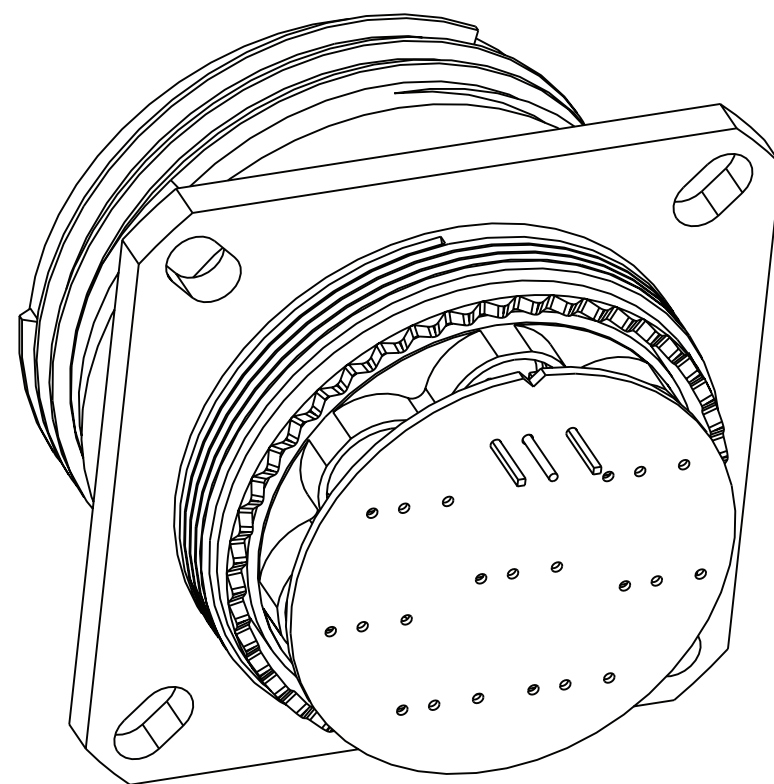


KIT PART NUMBER	CONNECTOR PART NUMBER	KIT TYPE	PCB CONTACT PART NUMBER	QTY.	MS REF NUMBER	CAP/CONTAINER
10-565997-968N	88-565839-8P		21-033828-001	8	D38999/20WJ8AN	10-576238-002 10-576237-002
10-565997-968A	88-565839-8G				D38999/20WJ8AA	
10-565997-968B	88-565839-8I				D38999/20WJ8AB	
10-565997-968C	88-565839-8K				D38999/20WJ8AC	
10-565997-968D	88-565839-8M				D38999/20WJ8AD	
10-565997-968E	88-565839-8R				D38999/20WJ8AE	


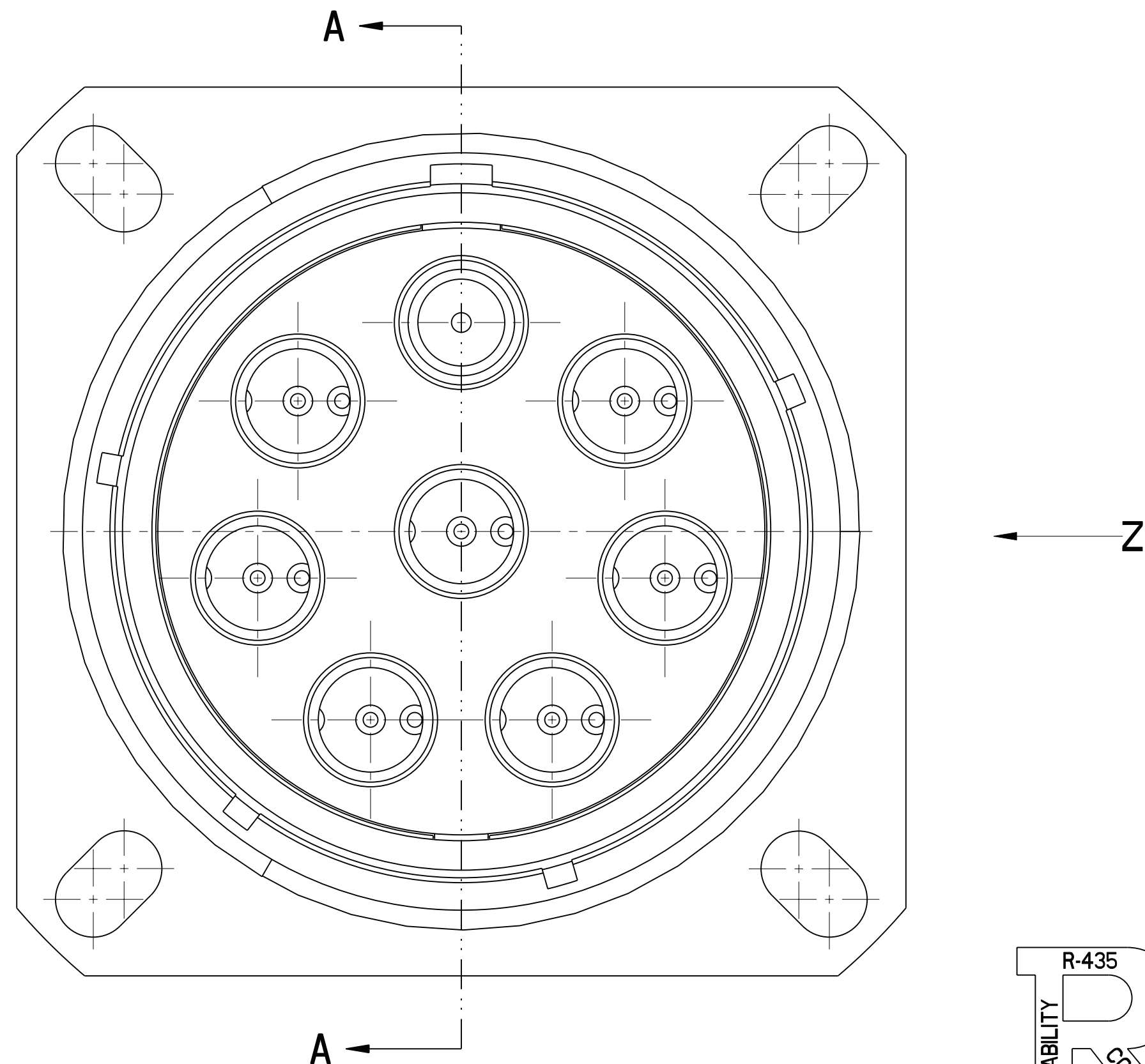
FOR UNIT ILLUSTRATION AND DIMENSIONAL DATA
SEE 88-565830/839

ALTERNATE SHELL ROTATION

CONNECTOR
LESS STAMPING
SEE NOTE 4
FOR STAMPING REQUIREMENT



SCALE 2



5. AFTER CONTACTS AND DISK HAVE BEEN INSTALLED, PLACE CONNECTOR INTO CONTAINER AND CAP. TO INSURE CAP LOCATION APPLY TAPE IF NEEDED. CARE MUST BE TAKEN NOT TO BEND THE CONTACTS.
4. STAMP "AMPHENOL", PART NUMBER, DATE CODE (9-3895), AND LOT NUMBER PER 9-5788
EXAMPLE:
 AMPHENOL 10-565997-968B 0920 09001000
3. PROCESS SPEC:
 PROCESS SHEET CONTROL 9-4796
 SPECIAL CONTROL 9-6000-2
 9-3895, 9-5788
2. PACKAGE PER PRODUCTION PROCESS SHEET.
1. KIT TYPE I CONTACTS SHIPPED UNASSEMBLED.
 KIT TYPE II CONTACTS SHIPPED ASSEMBLED IN CONNECTOR.

NOTES:

THE USE OF THIS DOCUMENT IS UNLIMITED.
HOWEVER, DOCUMENTS REFERENCED HEREON
MAY CONTAIN LIMITED RIGHTS DATA.

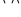
RELEASED / Sep . 23 2009, 2:30:21 PM

10-565997-968

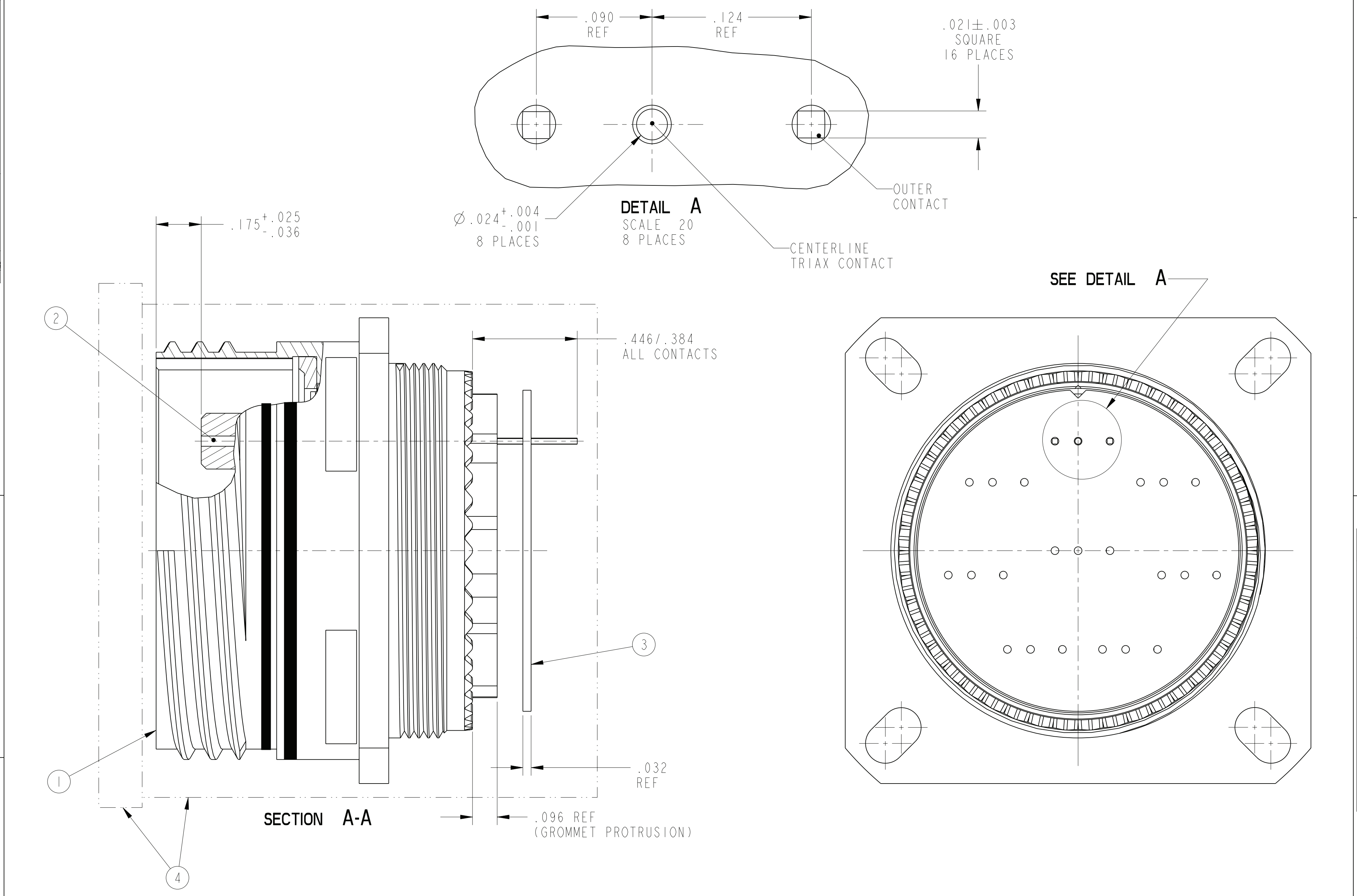
SHEET 1 OF 2

REV
A

N/A	PRO/ENGINEER INFORMATION
N/A	Pro/e Model Used: 10-565997-562.ASSEM
NEXT ASSEMBLY	Drawing Name: 10-565997-968

UNLESS OTHERWISE SPECIFIED	SPECIFICATIONS
LINEAR DIMENSIONS ARE IN INCHES TOLERANCES: .XXXX = $\pm .0005$ ANGLES = $\pm 2^\circ$.XXX = $\pm .010$.XX = $\pm .03$.X = $\pm .1$	MATERIAL SPEC.
	N/A
DIM. & TOL. PER ASME Y14.5M; DRP MIL-DTL-31000; OTHER Phenol Stds. PER 9-3800	PROCESS SPEC
 LEGENDS: =FLAG NOTE CALL OUT REFERENCE ONLY	SEE NOTE 3

4	I	SEE TABLE	CAP/CONTAINER	5
3	I	10-541509-038	DISK, ALIGNMENT	
2	SEE TABLE		CONTACT	
1	I	SEE TABLE	CONNECTOR	
POS	QTY	PART NUMBER	DESCRIPTION	NOTE
PARTS LIST				
APPROVALS		DATE	AMPHENOL CORPORATION 40-60 DELAWARE AVENUE SIDNEY, N.Y. 13838	
PREPARED BY	D. ALGER	2-SEPT-09	KIT, CONNECTOR, TYPE MS TV-AB STAMPING, D38999/20WJ8A()	
ENGINEER IN CHARGE	D. FREAR			
DESIGN MANAGER	E. SHEPLER			
DESIGN ACTIVITY GROUP	MILAERO			
THIRD ANGLE PROJECTION			SIZE C	CAGE CODE 77820
			DOCUMENT NO. 10-565997-968	REV. A
SCALE: 4.0			REF: 88-565830/839	SHEET 1 OF 2



THE USE OF THIS DOCUMENT IS UNLIMITED.
HOWEVER, DOCUMENTS REFERENCED HEREON
MAY CONTAIN LIMITED RIGHTS DATA.

RELEASED / Sep . 23 2009, 2:30:21 PM

SIZE	CAGE CODE	DOCUMENT NO.	REV.
C	77820	10-565997-968	A
SCALE: 4.0		REF. 88-565830/839	SHEET 2 OF 2