

B N					
ITEM #	PART #	NX202002R-00 QTY	NX202002R-30 QTY	NX202002R-31 QTY	DESCRIPTION
1	NX202002R	1	1	1	SWITCH MOMENTARY, RED BUTTON
2	SW-200-27	-----	1	1	LOCK WASHER
3	SW-200-26	-----	1	1	NUT
4	SW-200-23	-----	-----	2	TERMINAL LUG
5	SW-200-25	-----	-----	2	#2 LOCK WASHER
6	SW-200-72	-----	-----	2	SCREW

NOTES:

1) STANDARD MOMENTARY SWITCH  
SINGLE POLE, NORMALLY CLOSED  
BUTTON #2, COLOR: RED  
NO ADAPTER

SPECIFICATIONS;

AC RATING: 10 A @115VAC (RESISTIVE LOAD)

5A @ 115VAC (INDUCTIVE LOAD)

3A @115VAC (LAMP LOAD)

DC RATING: 10A @ 28VDC (RESISTIVE LOAD)

5A @ 28VDC (INDUCTIVE LOAD)

3A @ 28VDC (LAMP LOAD)

MECHANICAL LIFE: 500,000 CYCLES

**ACTION: MOMENTARY SNAP**

OPERATING FORCE: 3-5 LBS MOMENTARY

WEIGHT: .05 LBS MAX

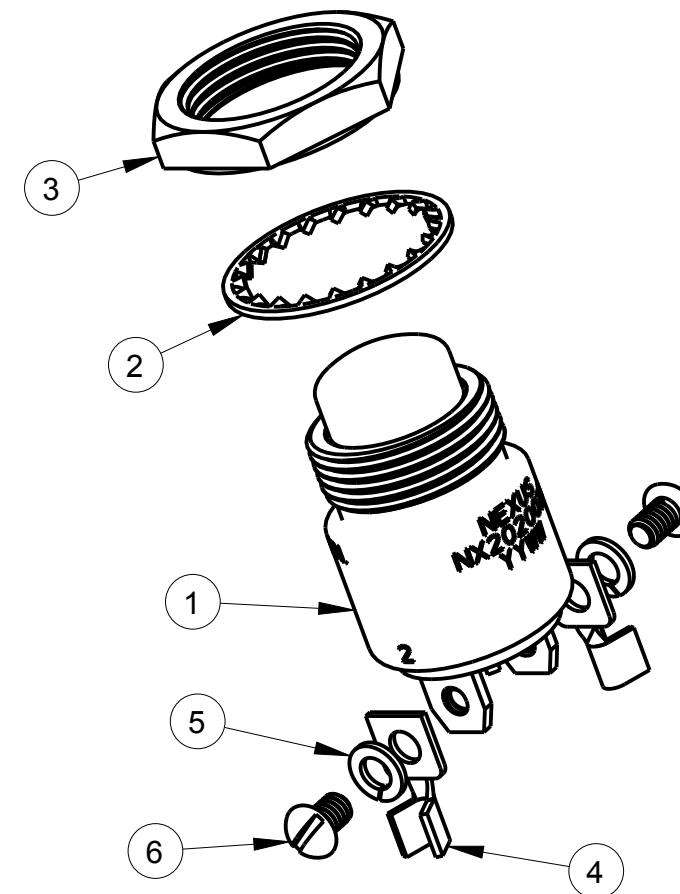
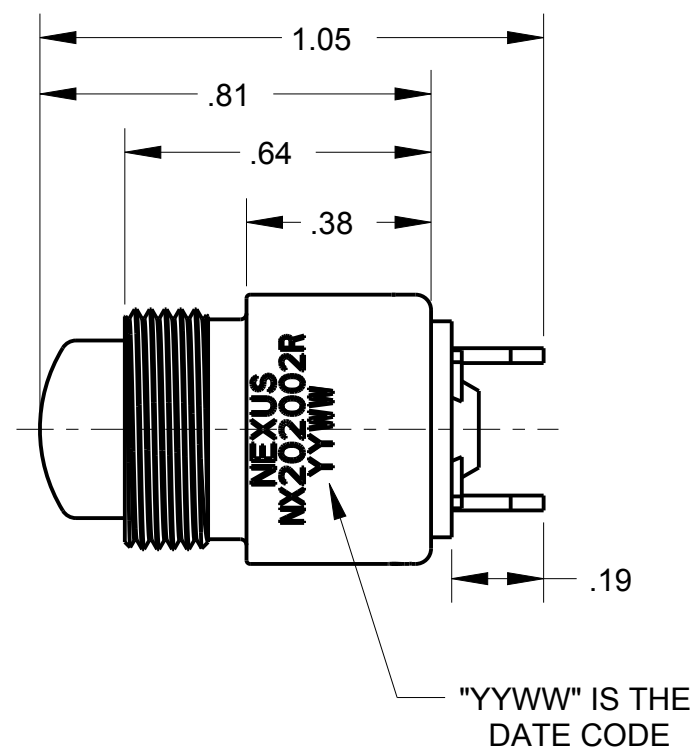
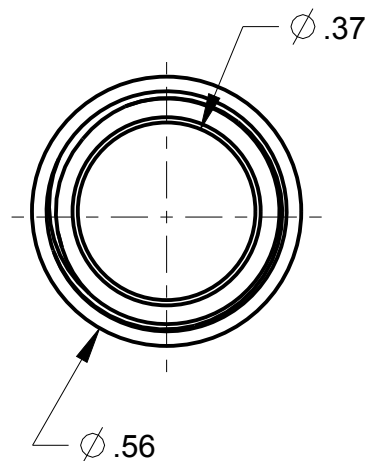
CASE: ALUMINUM ALLOY 2011-T3, CLEAR ANODIZED

IAW MIL-A-8525

PLUNGER: GLASS FILLED NYLON

BODY: DIALYL PHTHALATE IAW MIL-M-14

TERMINALS: THREADED #2-56 NC-28



THIS DOCUMENT CONTAINS PROPRIETARY INFORMATION OF NEXUS, INCORPORATED AND SUCH INFORMATION MAY NOT BE DISCLOSED TO OTHERS FOR ANY PURPOSE OR USED FOR ANY PURPOSE WITHOUT THE WRITTEN CONSENT OF NEXUS.

B	CORRECT 2 P/N, REVISE SPECIFICATIONS	217	1/9 2015	HR
A	INITIAL RELEASE		5/23 2008	EW
LET.	REVISION	CN #	DATE	CHK

DWN.BY	EWT	DATE	5/23/08		MATERIAL		
CHECKED BY		DATE			FINISH		
APPR.BY		DATE			WEIGHT	—	SCALE = 1.00 :1
UNLESS OTHERWISE SPECIFIED: DIMENSIONS ARE IN INCHES &/OR [mm] TOLERANCES: DECIMAL: .XX[X.X] .XXX[X.XX] ± .0X[0.X] ± .00X[0.0X] FRACTION: X/X X/XX ± X/XX ANGLES: X° X°				TITLE		NEXUS STAMFORD,CONN	
				SWITCH SPNC MOMENTARY		SIZE B	
				DO NOT SCALE DWG.		DWG. NO. NX202002R-XX	
				SHEET 1 OF 1			