

| Photo | Dimensions | Mounting Hole Dimensions | Terminal Layout | Circuit Diagram |

| Packing Specifications | Soldering Conditions |

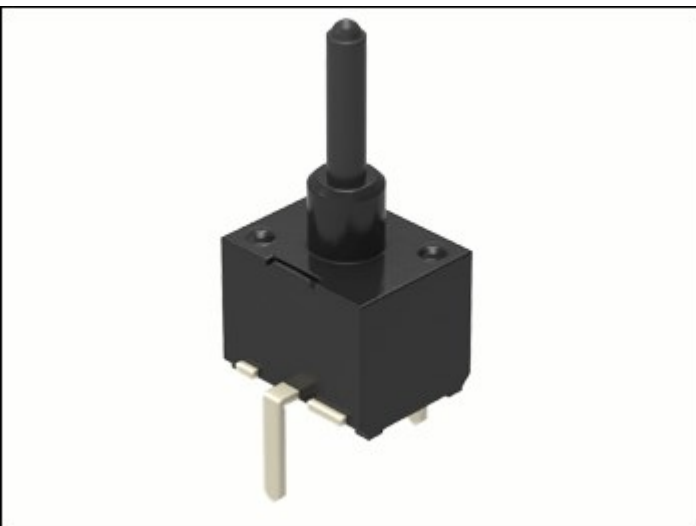
PRINT

Part number			SPPW810400
Poles			1
Positions			1
Terminal type			For PC board (Dip)
Operating force			0.3N max.
Slider height (mm)			10.3
ON start position (mm)			9.8
Total travel position (mm)			8.6
Operating temperature range			-10℃ to +60℃
Rating (max.)/(min.) (Resistive load)			0.1A 30V DC/100μA 3V DC
Electrical performance	Contact resistance (Initial/After operating life)	1Ω max./2Ω max.	
	Insulation resistance	100MΩ min. 100V DC	
	Voltage proof	100V AC for 1 minute	
Mechanical performance	Terminal strength	3N for 1 minute	
	Actuator strength	10N	
Durability	Operating life without load	100,000 cycles 2Ω max.	
	Operating life with load Rating (max.) (Resistive load)	100,000 cycles 2Ω max..	
Environmental performance	Cold	-20℃ 96h	
	Dry heat	85℃ 96h	
	Damp heat	40℃, 90 to 95%RH 96h	

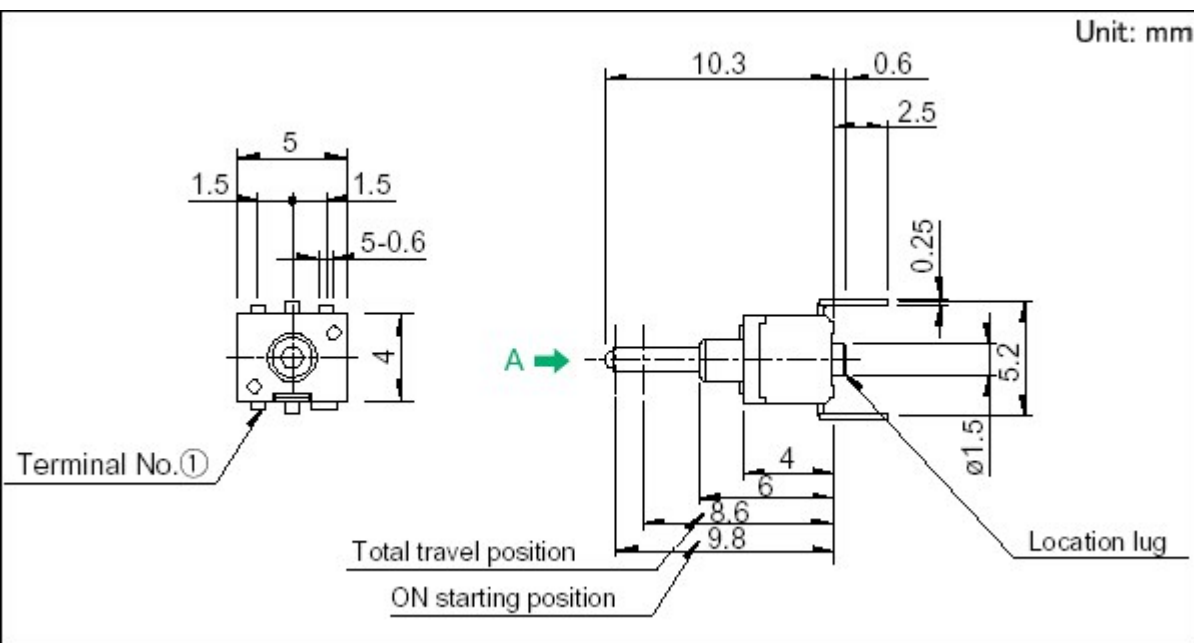
Minimum order unit (pcs.)	Japan	100
	Export	20,000

3D CAD (STEP)	↓
Certificate of Compliance to RoHS regulations	↓

Photo

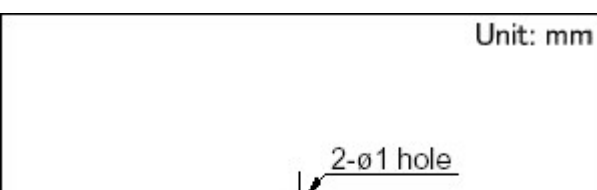


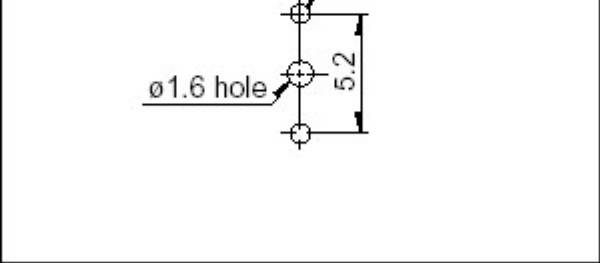
Dimensions



1. Products without location lug are also available.
2. Contact us for other slider height variations.
3. Contact us for other terminal types.

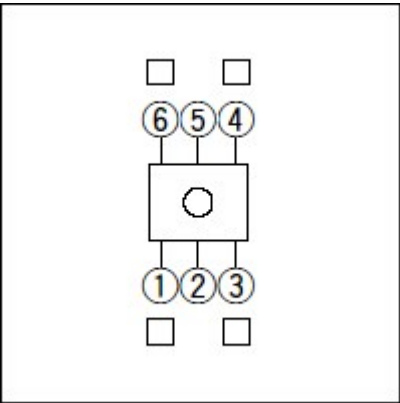
Mounting Hole Dimensions






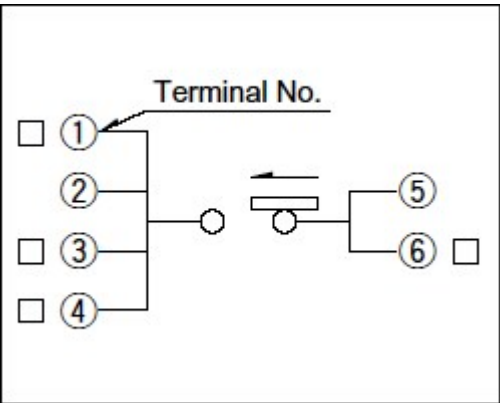
Viewed from direction A in the dimensions.

Terminal Layout



 mark shows a cutting terminal.

Circuit Diagram



Packing Specifications

Bulk

Number of packages (pcs.)	1 case / Japan	4,000
	1 case / export packing	20,000
Export package measurements (mm)	400×270×290	

Soldering Conditions

Reference for Dip Soldering

Items	Preheating temperature	100°Cmax.
-------	------------------------	-----------

	Preheating time	60s max.
Dip soldering	Soldering temperature	255±5℃
	Duration of immersion	5±1s
Reference for Hand Soldering		
	Soldering temperature	350±5℃
	Soldering time	3s max.

Notes are common to this series/models.

1. This site catalog shows only outline specifications. When using the products, please obtain formal specifications for supply.
2. Standard type dimensions indicate "with location lug." version.
3. Please place purchase orders per minimum order unit (integer).
4. Products other than those listed in the above chart are also available. Please contact us for details.

Inquiries about Products

 **Inquiry**