



Module Part Number	WYSBMVGX8	WYSBCVGXA	WYSAAVDX7	WYSBMVGX4	WYSBMVGXB
WiFi: Marvell 88W8787	802.11b/g/n			802.11a/b/g/n	
Interface	SDIO, PCIM, I2S	SDIO, PCIM	SDIO	SDIO	SDIO, PCIM
Bluetooth	Yes		No		Yes
FM Radio	Yes	No			
Crystal	No	Yes		No	
Antenna on Board	No		Yes	No	
Board Certifications			FCC, Japan IC, CE		
RF Eval Daughter Board	WBSBMVGX8	WBSBCVGXA-1	WBSAAVDX7	WBSBMVGX4	WBSBMVGXB
Dimensions	8.5 x 8.0 x 1.3 mm	9.0 x 8.8 x 1.35 mm	35.0 x 15.0 x 2.9 mm	13.1 x 6.1 x 1.35 mm	
Wireless Interface Board	WKSXXVXXX-1 (required to run RF eval daughter board except WBSAAVDX7 and WBSBCVGXA)				



Module Part Number	Dimensions	On Board Components	Antenna	Features
GYSFFMAXX (Eval Board GKSFFMAXX)	10.8x10.0x2.0 mm	TCXO, RTC ,SAW filter	External	L1 Band (1574.25MHz), NMEA data output, High sensitivity, Low power, A-GPS, UART/USB interface

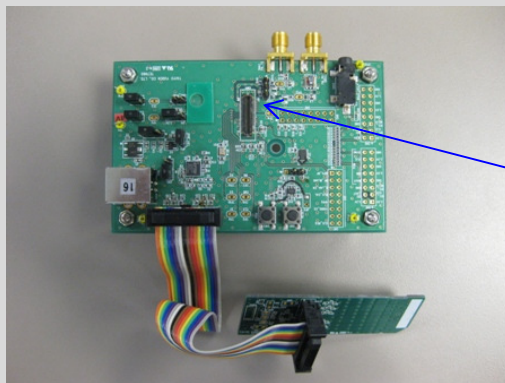


Module Part Number	EYSFDCAVX	EYSFDCAXX-XT	EYSMACAXX
Bluetooth Version	Bluetooth 2.1+EDR		
RF Tx Power Level	Class 2 (Operates to ~10m)		
Software Stack	HCI	Serial Port Profile (SPP)	HCI
Interface	UART, PCM		
Module Dimensions	31 x 15 x 3 mm		9.2 x 8.1 x 1.6 mm
Physical Interface	20 Pin Connector		SMD Type
Baud Rate★	115.2Kbps		
Includes Crystal	Yes		
Onboard Antenna	Yes		No
Module Type Approvals (FCC, IC, CE, TELEC)	Yes		No
RoHS	Yes		
Eval Board Part Number	EBSFDCAVX	EBSFDCAXX-XT	EBSMACAXX
Other Features	On board antenna with type approvals		Low cost EEPROM

★ Other baud rates available. Please inquire with Taiyo Yuden salesperson.

Module	Basic Description	Evaluation Board(s) Required To Evaluate
WYSBMVGX8	802.11bgn + Bluetooth + FM	WBSBMVGX8 and WKSXXVXXX-1
WYSBCVGXA	802.11bgn + Bluetooth w/ xtal	WBSBCVGXA-1 (combines WIB and RF daughter card)
WYSBMVGX4	802.11abgn + Bluetooth	WBSBMVGX4 and WKSXXVXXX-1
WYSBMVGXB	802.11abgn + Bluetooth	WBSBMVGXB and WKSXXVXXX-1
WYSAAVDX7	802.11bgn w/ xtal and antenna	WBSAAVDX7 (combines WIB and RF daughter card)
GYSFFMAXX	GPS	GKSFFMAXX
EYSFDCAVX	Bluetooth w/ antenna and HCI interface	EBSFDCAVX
EYSFDCAXX-XT	Bluetooth w/ antenna and SPP interface	EBSFDCAXX-XT
EYSFMACAXX	Bluetooth with HCI interface	EBSFMACAXX

Wireless Interface Board (WIB)



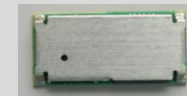
WIB Part No.: WKSXXVXXX-1

RF Daughter Card Mounts to WIB

WLAN Modules



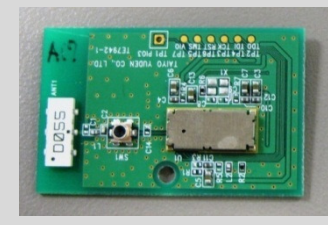
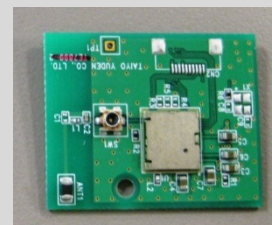
WYSBMVGX8



WYSBMVGX4
WYSBMVGXB

Module Mounted on Board

WLAN RF Daughter Card*1



RF Daughter Card Part No. Example: WBSBMVGX8

*1 Taiyo Yuden RF Daughter Card connector also compatible with Marvell WIB