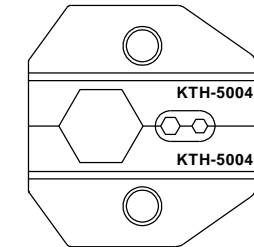
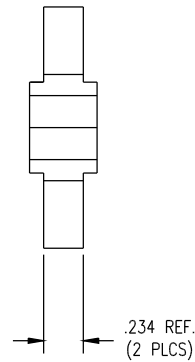
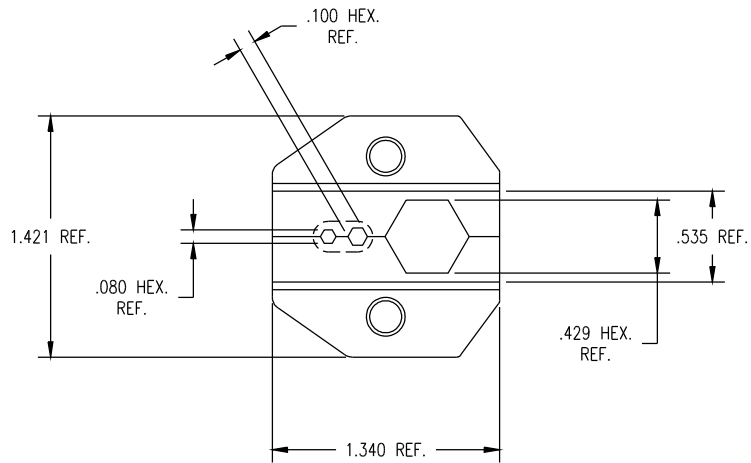
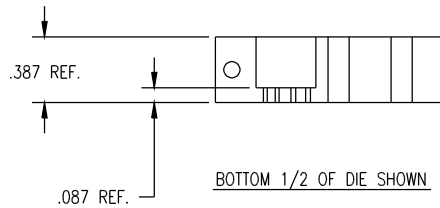
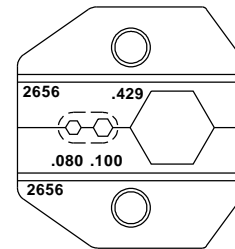


DASH NO.	M CODE	MADE FROM	REQ'D NOTES
-	M99	<span style="border: 1px solid black; padding: 0 2px;">3</span>	SUPPLIED WITHOUT BACKSIDE MARKING
-	-	M99	<span style="border: 1px solid black; padding: 0 2px;">4</span>



BACKSIDE MARKING



FRONTSIDE MARKING

NOTES:

1. USE THE FOLLOWING CAVITIES FOR CABLES NOTED BELOW:  
- FOR RG-8, RG-9, RG-11 TYPE AND BELDEN 7731A, AND 8213; USE .100 AND .429 HEX. CAVITY.
2. FINISH: BLACK OXIDE
- 3 ORDER FROM PALADIN. PART NUMBER 2656.
- 4 BACKSIDE MARKING TO BE DONE AFTER PART IS SUPPLIED FROM PALADIN.


UNLESS OTHERWISE SPECIFIED

1. TOLERANCES: FRACTIONS & 2 PLACE DECIMALS  $\pm .010$   
3 PLACE DECIMALS  $\pm .004$  ANGLES  $\pm 1^\circ$   
CONCENTRICITY OF ANY 2 DIAMETERS MAY NOT  
EXCEED HALF THE SUM OF THEIR TOLERANCES.

2. REMOVE ALL BURRS, BREAK SHARP EDGES .005 MAX.  
3. NO FILLETS PERMITTED.  
4. SURFACE ROUGHNESS 63 MICROINCHES RMS MAX.  
5. ALL DIMENSIONS PRIOR TO PLATING.  
6. ALL PROCESSES AND PLATING IN ACCORDANCE WITH KER10004.

7. ALL LEAD THREADS TO BE  
CHAMFERED 45° TO ROOT DIAMETER.  
★ CRITICAL DIMENSIONS

KTH-5004

REVISIONS	
ISSUE	CHANGES
0	ER 39294 JLA 05/20/05
B	REVISED PER DMF304 & REVISED PER DMF304 & ER040860
	KPL 03/19/12
<p>THIS DRAWING, THE DESIGNS AND IDEAS EMBODIED IN THE DEVICE TO WHICH IT RELATES, AND THE METHOD OF PRODUCING THE DEVICE, ARE THE PROPERTY OF WINCHESTER ELECTRONICS CORPORATION AND SHALL NOT BE EMPLOYED, COPIED, OR DISCLOSED TO ANYONE, IN ANY MANNER WITHOUT THE CONSENT OF WINCHESTER ELECTRONICS CORPORATION.</p>	
SCALE	3:2
APPROX SURFACE AREA	N/A
USED ON	KTH-5000
REF:	KTH-5000
CRIMP DIE	
DRAWN J.ALBRECHT	DATE 05/19/05
DESIGN J.ALBRECHT	DATE 05/20/05
APPR.	DATE
 <p>Winchester Electronics Corporation 62 Barnes Industrial Road North Wallingford, Connecticut 06492</p>	
KTH-5004	