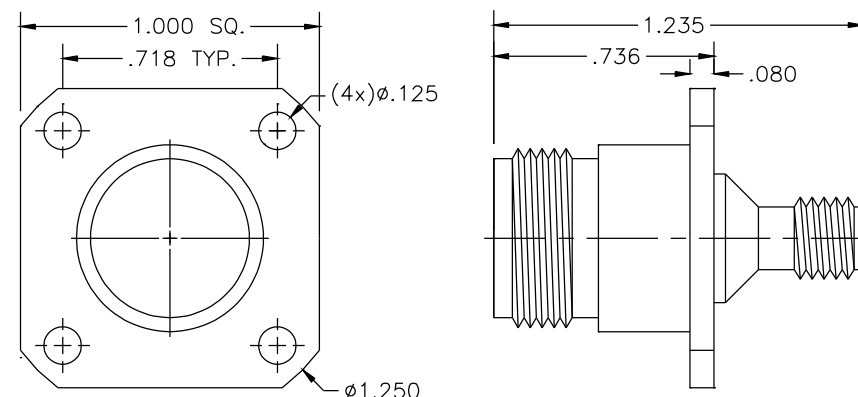


53-921-4000-03

CONNECTOR MEETS GENERAL ELECTRICAL, MECHANICAL AND ENVIRONMENTAL REQUIREMENTS OF MIL-PRF-39012, AND MIL-STD-348B

THIS DOCUMENT, INCLUDING THE DESIGN, CONFIGURATION AND MECHANICAL FEATURES REVEALED HEREIN ARE THE SOLE, CONFIDENTIAL AND PROPRIETARY PROPERTY OF WINCHESTER INTERCONNECT. REPRODUCTION OR USE THEREOF, IN WHOLE OR PART, IS PROHIBITED WITHOUT THE PRIOR WRITTEN CONSENT OF WINCHESTER INTERCONNECT.



LTR	DESCRIPTION	DATE	APPR.	DRAWN LMW	CHECKED	USED ON 53-921-4000-03		C:\Users\jvankirk\Desktop\logo.jpg			
—	REL PER ECN# 2551	4/18		APPR.	SCALE						
				UNLESS OTHERWISE SPECIFIED: 1. REMOVE ALL BURRS 2. BREAK ALL CORNERS & EDGES .005 R. MAX 3. CHAMFER 1st & LAST THREADS 45° 4. SURFACE FINISHED 32✓UNLESS OTHERWISE SPECIFIED. 5. DIAMETERS ON COMMON CENTERS TO BE CONCENTRIC WITHIN .002 T.I.R. 6. ALL DIMENSIONS ARE AFTER PLATING.		MATERIAL		TITLE N FEMALE TO SMA FEMALE (4) HOLE FLANGE			
						FINISH					
				DIMENSIONS ARE IN INCHES TOLERANCES		SIZE A	FSCM NO. OHMO1	SHEET 1	DWG. NO. 53-921-4000-03		
				DECIMALS .X ±.030 .XX ±.010 .XXX ±.005	FRACTIONAL ± 1/64	ANGULAR .X° ±1°0' .X°X' ±15'					