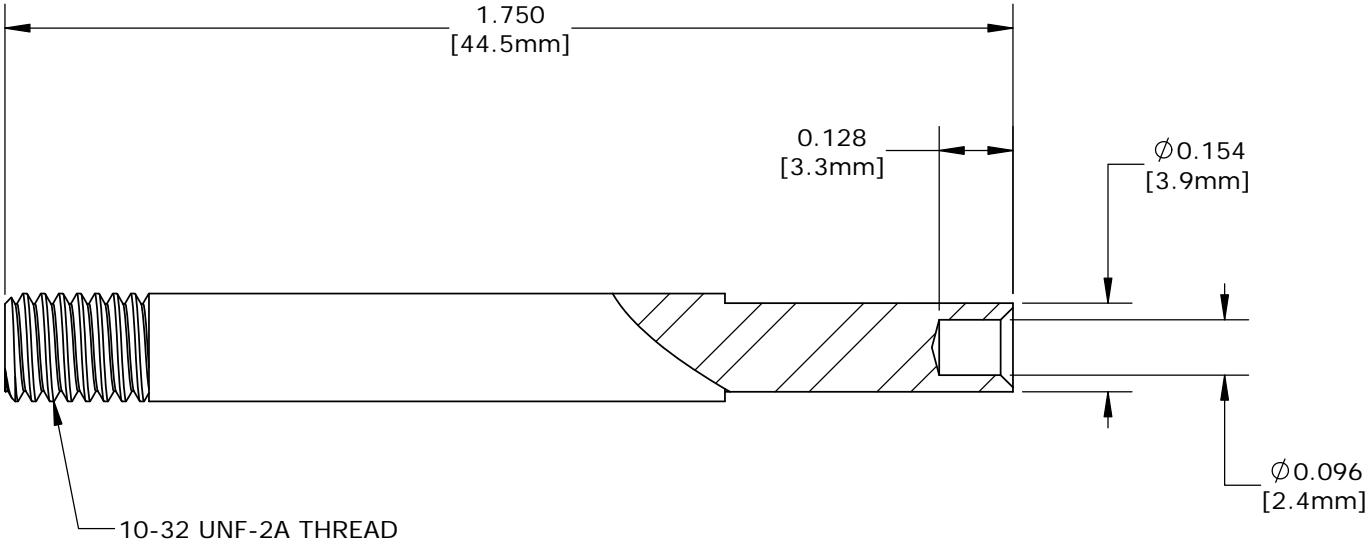


- NOTES:
- 1. MATERIAL: STAINLES STEEL
  - 2. ALL DIMENSION FOR REFERENCE ONLY



PROPRIETARY

THIS DOCUMENT CONTAINS CONFIDENTIAL INFORMATION PROPRIETARY TO CONXALL CORPORATION. ANY REPRODUCTION, DISCLOSURE, OR USE OF THIS DOCUMENT /INFORMATION IS EXPRESSLY PROHIBITED UNLESS AUTHORIZED IN WRITING BY CONXALL CORPORATION.

DIMENSIONS IN BRACKETS [] ARE METRIC

H	SS	07-16-19	UPDATED MATERIAL FOR NOTE 1 PER ECR 9429				
G	AN	06-28-17	CREATED SHEET PER DOR 17-7819JS				
REV.	INIT.	DATE	DESCRIPTION				
<div>ALL INFORMATION ILLUSTRATED IS THE PROPERTY OF "CONXALL CORPORATION." UNAUTHORIZED DUPLICATION OR DISTRIBUTION OF THIS DOCUMENT IS PROHIBITED.</div>			ORIG. DRAWN BY:    DATE:		<div>CONXall</div> <div>601 E. WILDWOOD VILLA PARK, IL 60181</div>		
			B.C.                      10-14-92				
			CHECKED BY:				
			APPROVED BY:				
<div>ALL UNITS ARE IN FEET, INCHES, FRACTION OF INCHES AND DECIMALS.</div>					TITLE:                      PIN REMOVAL BIT #12 CONTACTS		
			SCALE	SIZE			SHEET
<div>▷ = CRITICAL CHARACTERISTIC FLAG PER SPEC. XXXX</div>			NTS	A	1 OF 1	CUSTOMER:    STANDARD PRODUCT	
			FILE:	DIRECTORY:			PART NUMBER:    356-121
			356-121	SLW			
			REV H				