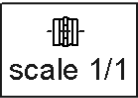
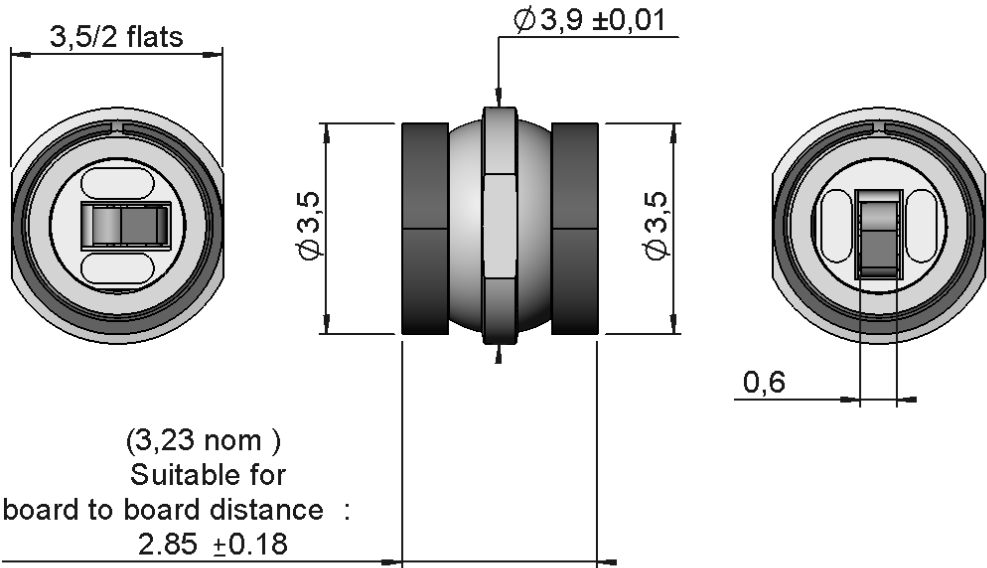
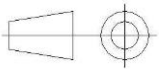


PAGE 1/3	ISSUE 29-10-18A	SERIES IMP	PART NUMBER R107803000
----------	-----------------	------------	------------------------



All dimensions are in mm. Tolerances according ISO 2768 m-H



COMPONENTS	MATERIALS	PLATING (μm)
Body	BRONZE	NPGR
Center contact	BERYLLIUM COPPER	GOLD 1.3 OVER NICKEL2
Outer contact		
Insulator	PEEK	
Gasket		
Others parts	BERYLLIUM COPPER	NPGR
-	-	-
-	-	-

PAGE 2/3

ISSUE **29-10-18A**

SERIES **IMP**

PART NUMBER **R107803000**

PACKAGING

Standard	Unit	Other
100	Contact us	Contact us

ELECTRICAL CHARACTERISTICS

Impedance	50	Ω
Frequency	0-18	GHz
VSWR	* + 0,0000	x F(GHz) Maxi
Insertion loss	**	\sqrt{F} (GHz) dB Maxi
RF leakage	- (NA	- F(GHz)) dB Maxi
Voltage rating	225	Veff Maxi
Dielectric withstanding voltage	500	Veff mini
Insulation resistance	1000	M Ω mini

MECHANICAL CHARACTERISTICS

Center contact retention		
Axial force – Mating End	0.5	N mini
Axial force – Opposite end	0.5	N mini
Torque	NA	N.cm mini

Recommended torque		
Mating	NA	N.cm
Panel nut	NA	N.cm

Mating life	50	Cycles mini
Nominal Weight (Add +15% for max weight)	0,1600	g

ENVIRONMENTAL

Operating temperature	-55/+125	°C
Hermetic seal	NA	Atm.cm3/s
Panel leakage	NA	

SPECIFICATION

OTHER CHARACTERISTICS

Assembly instruction:

Others:

***VSWR: 1.3max DC-12GHz**

***VSWR: 1.55 max -->18GHz**

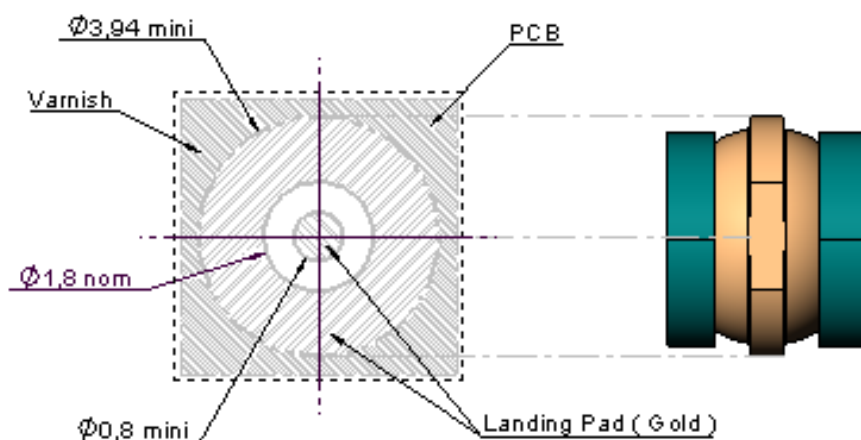
****0.25dB max at 18Ghz**

PAGE 3/3

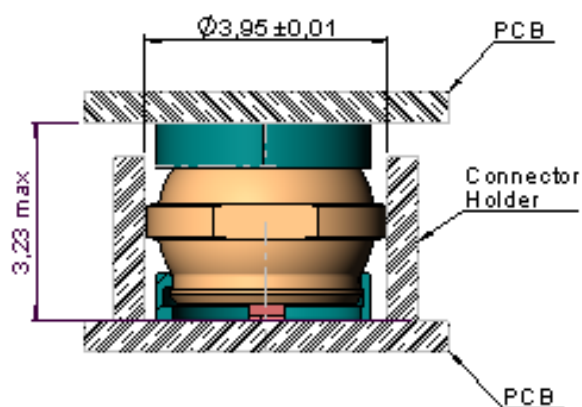
ISSUE 29-10-18A

SERIES IMP

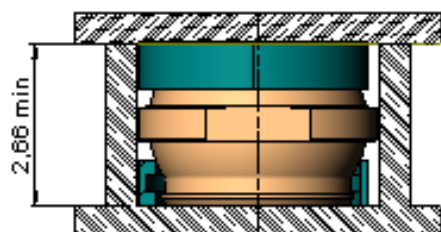
PART NUMBER R107803000



2 - UNCOMPRESSED



3 - COMPRESSED



1 - UNCOMPRESSED

