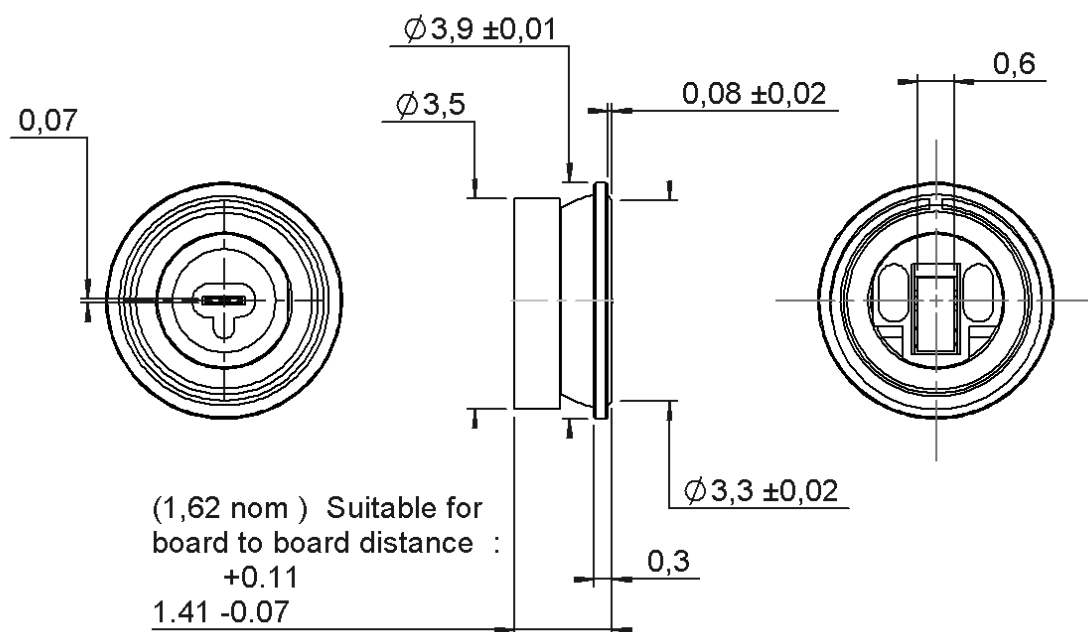



PAGE 1/3

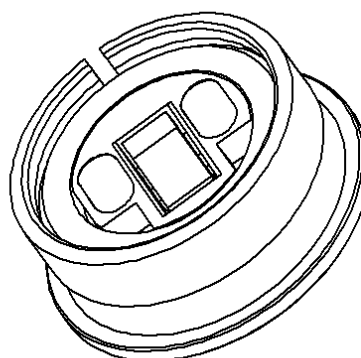
ISSUE 12-11-18A

SERIES IMP

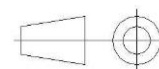
PART NUMBER **R107802000**




scale 1/1



All dimensions are in mm. Tolerances according ISO 2768 m-H



COMPONENTS	MATERIALS	PLATING (μm)
Body	BRONZE	NPGR
Center contact	BERYLLIUM COPPER	GOLD 1.3 OVER NICKEL2
Outer contact		
Insulator	PEEK	
Gasket		
Others parts	BERYLLIUM COPPER	NPGR
-	-	-
-	-	-

PAGE 2/3

ISSUE 12-11-18A

SERIES IMP

PART NUMBER R107802000

PACKAGING

Standard	Unit	Other
100	Contact us	Contact us

ELECTRICAL CHARACTERISTICS

Impedance	50	Ω
Frequency	0-18	GHz
VSWR	* + 0,0000	x F(GHz) Maxi
Insertion loss	**	√F(GHz) dB Maxi
RF leakage	- (NA	- F(GHz) dB Maxi
Voltage rating	225	Veff Maxi
Dielectric withstanding voltage	500	Veff mini
Insulation resistance	1000	MΩ mini

ENVIRONMENTAL

Operating temperature	-55/+125	°C
Hermetic seal	NA	Atm.cm3/s
Panel leakage	NA	

MECHANICAL CHARACTERISTICS

Center contact retention		
Axial force – Mating End	0.5	N mini
Axial force – Opposite end	0.5	N mini
Torque		N.cm mini

Recommended torque	
Mating	N.cm
Panel nut	N.cm

Mating life	50	Cycles mini
Nominal Weight	0,0600	g
(Add +15% for max weight)		

SPECIFICATION

OTHER CHARACTERISTICS

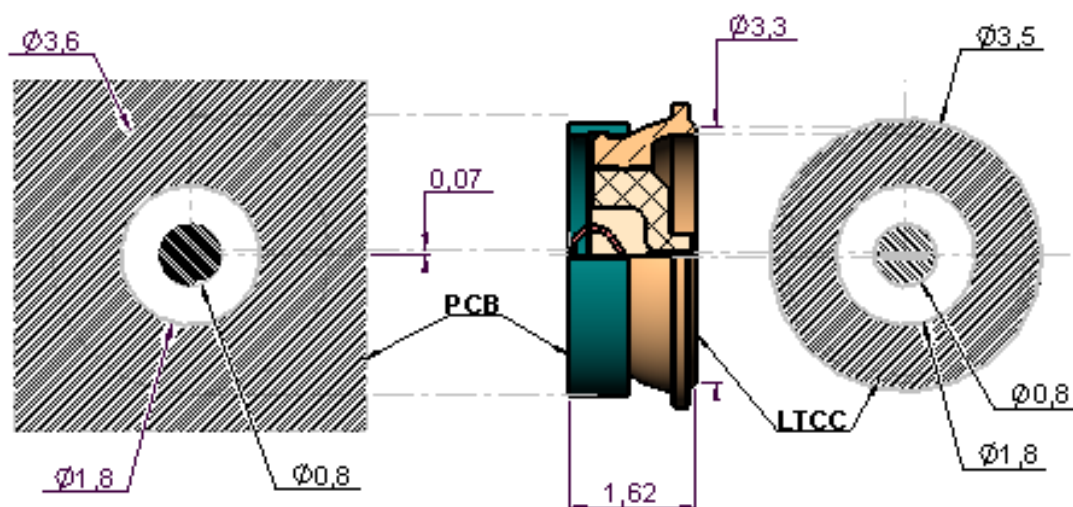
Assembly instruction:

Others:

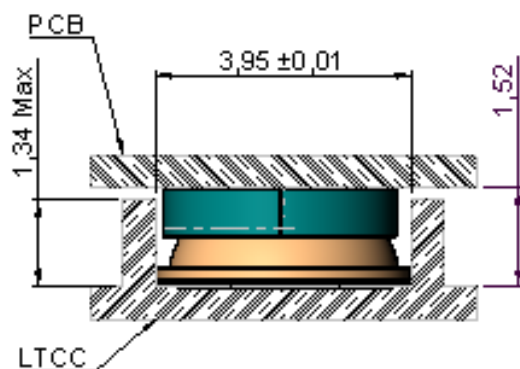
*V.S.W.R: 1.3 max DC-12GHz

*V.S.W.R: 1.5 max ->18GHz

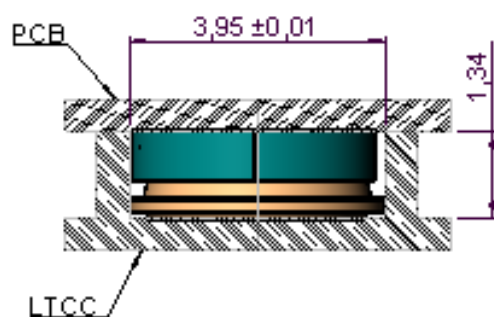
**0.20dB maxi



2 - COMPRESSED : 1.52



3 - COMPRESSED : 1.34



1 - UNCOMPRESSED

