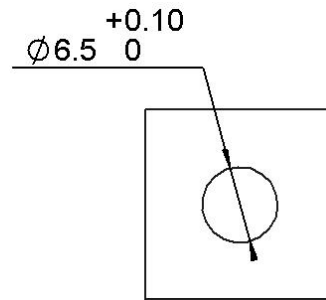
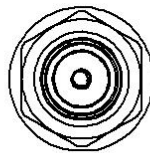
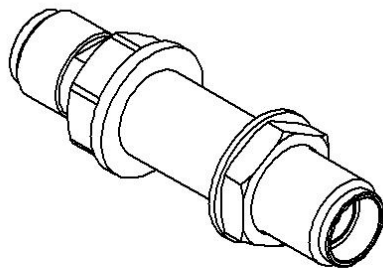
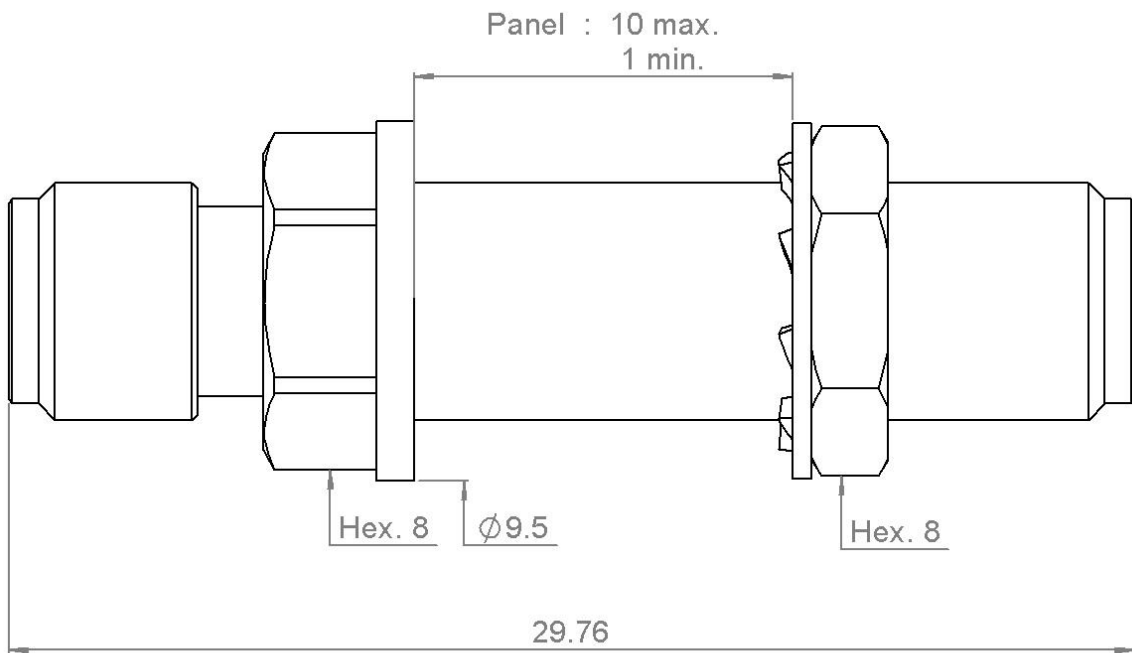
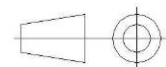


PAGE 1/2	ISSUE 28-09-22A	SERIES ATTENUATOR	PART NUMBER <b>R429800000</b>
----------	--------------------	----------------------	-------------------------------



Panel cutout  
Panel thickness : 10 max.  
1 min.

All dimensions are in mm. Tolerances according ISO 2768 c-K



COMPONENTS	MATERIALS	PLATING (µm)
Body	<b>BRASS.</b>	<b>BBR</b>
Male center contact	<b>BERYLIUM COPPER</b>	<b>GOLD OVER NICKEL</b>
Female center contact	<b>BERYLIUM COPPER</b>	<b>GOLD OVER NICKEL</b>
Outer contact		
Insulator	<b>PTFE</b>	
Gasket	<b>SILICONE RUBBER</b>	
Substrate	<b>ALUMINIUM NITRIDE</b>	
Resistor	<b>THIN FILM</b>	
Others parts		-

PAGE 2/2	ISSUE <b>28-09-22A</b>	SERIES <b>ATTENUATOR</b>	PART NUMBER <b>R429800000</b>
----------	---------------------------	-----------------------------	-------------------------------

**ELECTRICAL CHARACTERISTICS**

Frequency (GHz)	<b>DC-2</b>	<b>2 - 4</b>	<b>4 - 8</b>	<b>8 - 12.4</b>	<b>12.4 - 18</b>
V.S.W.R (≤)	<b>1.1</b>	<b>1.15</b>	<b>1.2</b>	<b>1.25</b>	<b>1.35</b>
Deviation(±dB)	<b>0.3</b>	<b>0.3</b>	<b>0.3</b>	<b>0.3</b>	<b>0.3</b>

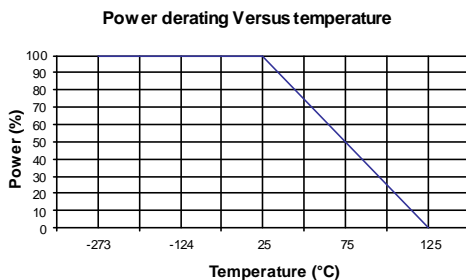
Operating Frequency Range	<b>DC - 18</b>	GHz
Impedance	<b>50</b>	Ω
Nominal Attenuation	<b>0</b>	dB
Peak power at 25°C (1μs, 1%)	<b>100</b>	W
Average power at 25°C	<b>2</b>	W (Free Air Cooled)
		W (Conduction Cooled)

**MECHANICAL CHARACTERISTICS**

Connectors	<b>SMA</b>	<b>Female Female</b>	<b>MIL C39012</b>
Weight (±15%)	<b>6,5210 g</b>		

**ENVIRONMENTAL CHARACTERISTICS**

Operating temperature range	<b>10mk/+125 °C</b>
Storage temperature range	<b>10mk/+125 °C</b>



**SPECIFICATION**

**OTHER CHARACTERISTICS**