

6

5

4

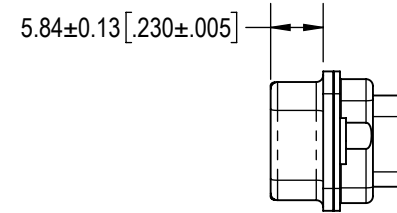
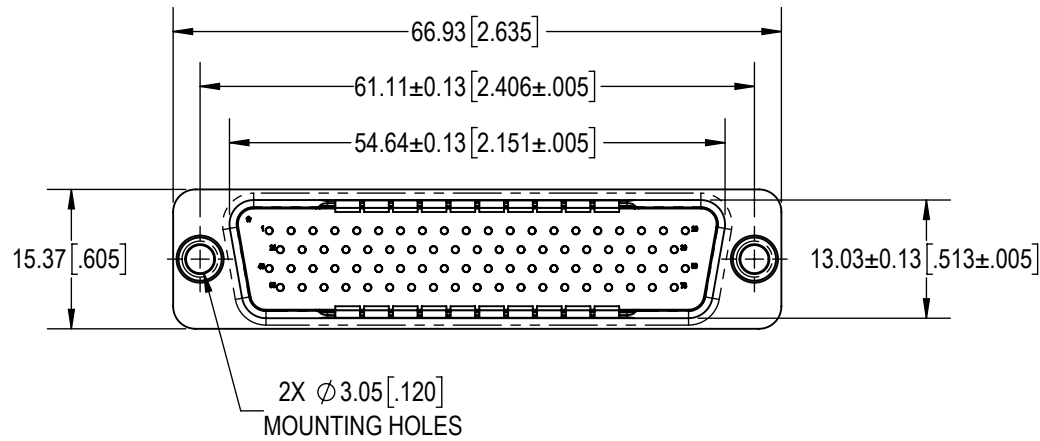
3

2

1

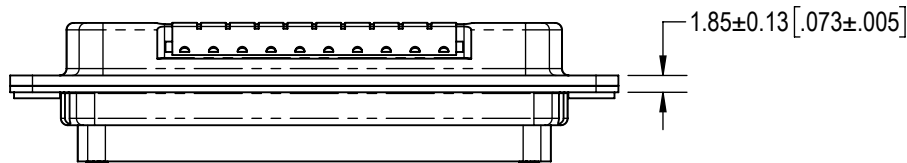
D

D



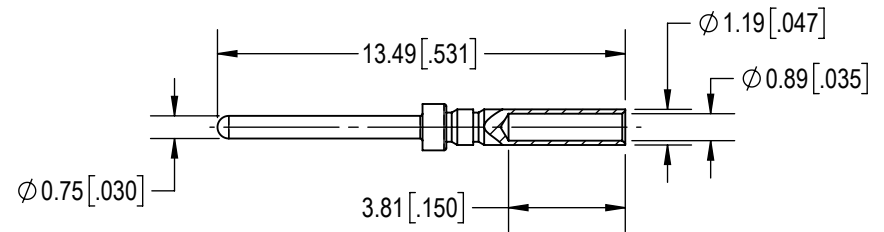
C

C



B

B



78X MALE CONTACT ENLARGED

NOTES;

1. MATERIALS AND FINISHES:

INSULATOR: GLASS FILLED POLYESTER PER ASTM D5927, UL 94V-0, COLOR: BLUE.

CONTACTS: PRECISION MACHINED COPPER ALLOY, 1.27µ [.000050] GOLD OVER NICKEL PLATE.

SHELLS: PRECISION-MACHINED ALUMINUM, ELECTROLESS NICKEL PLATE.

RIVETS: STAINLESS STEEL, PASSIVATED.

EMI CLIPS: BERYLLIUM COPPER.


2. DETAILED PRODUCT, ELECTRICAL AND MECHANICAL INFORMATION IS AVAILABLE IN THE LATEST HIGH DENSITY MACH-D PRODUCT PUBLICATION AT CONNECTPOSITRONIC.COM.

3. CONNECTORS ARE COMPLIANT TO THE CURRENT RoHS DIRECTIVE.

4. CRIMPING TOOL INFORMATION IS AVAILABLE AT WWW.CONNECTPOSITRONIC.COM/CrimpToolCrosslist.

A

A

BY	GJ	CHK	ND	3RD ANGLE	POSITRONIC BELIEVES THE DATA ON THE DRAWING TO BE RELIABLE. THE USER EMPLOYS SUCH INFORMATION AT HIS OWN DISCRETION AND RISK. POSITRONIC ASSUMES NO RESPONSIBILITY FOR RESULTS OBTAINED OR DAMAGES INCURRED FROM USE OF SUCH INFORMATION IN WHOLE OR IN PART.	 Positronic® CONNECTPOSITRONIC.COM
APR	AB	RELEASED DATE:	2024-09-12	SCALE		
TOLERANCES				NTS		
±0.03mm [.001 INCHES] FOR MALE CONTACT MATING DIAMETERS ±0.08mm [.003 INCHES] FOR CONTACT TERMINATION DIAMETERS ±0.13mm [.005 INCHES] FOR ALL OTHER DIAMETERS ±0.38mm [.015 INCHES] FOR ALL OTHER DIMENSIONS ±5° FOR ALL ANGLES DIMENSION ARE IN MILLIMETERS [INCHES]				PART NUMBER	MCDD78MG1000K/AA-15	SERIES MACH-D
				TITLE	MCDD78MG1000K/AA-15	
				CREATED ON:	2024-09-12	SHEET SHEET 1 OF 1
						REV A

6

5

4

3

2

1