

6

5

4

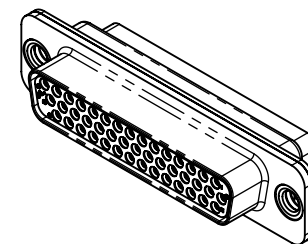
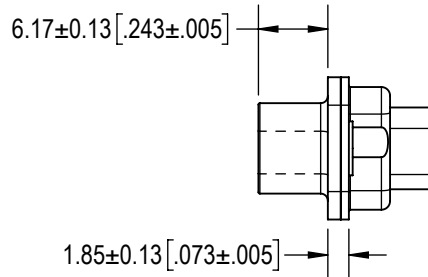
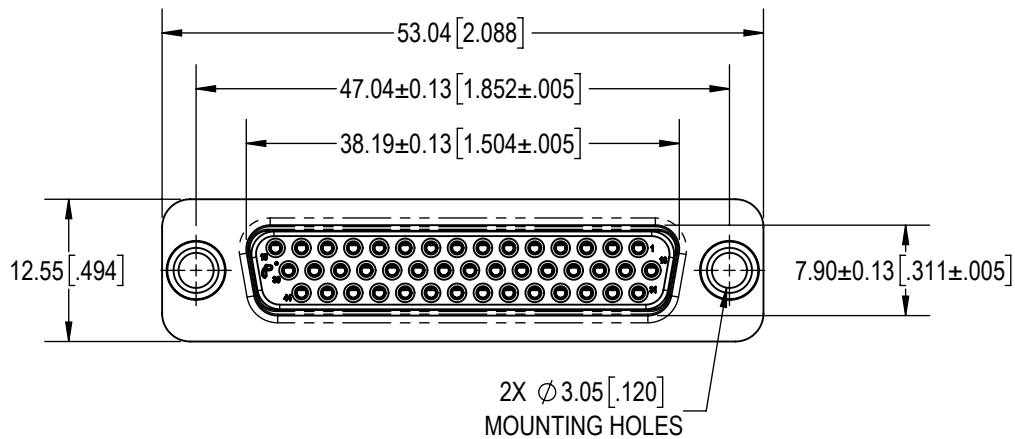
3

2

1

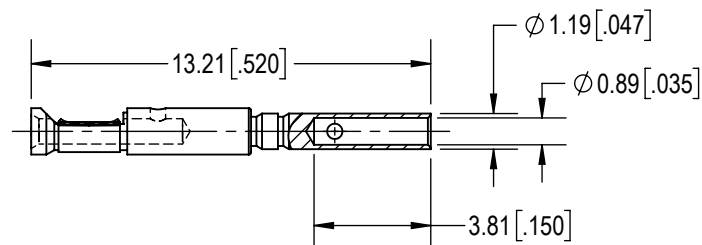
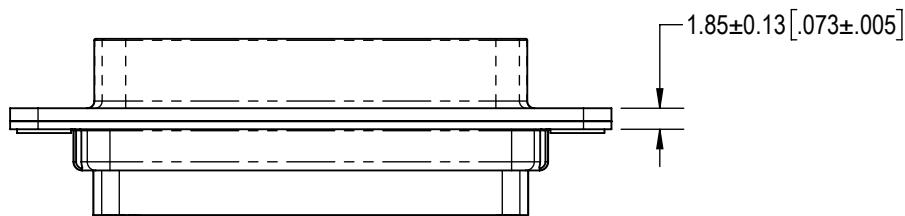
D

D



C

C



44X FEMALE CONTACT (ENLARGED)

B

B

A

A

## NOTES:

## 1. MATERIAL AND FINISHES:

INSULATOR: GLASS-FILLED POLYESTER PER ASTM D5927, UL 94V-0, COLOR: BLUE



CONTACTS: PRECISION MACHINED COPPER ALLOY, 1.27µ [0.00050] GOLD OVER NICKEL PLATE.

SHELLS: PRECISION-MACHINED ALUMINUM, ELECTROLESS NICKEL PLATE.

RIVETS: STAINLESS STEEL, PASSIVATED.

## 2. DETAILED PRODUCT, ELECTRICAL AND MECHANICAL INFORMATION IS AVAILABLE IN THE LATEST HIGH DENSITY MACH-D PRODUCT PUBLICATION AT CONNECTPOSITRONIC.COM.

## 3. CONNECTORS ARE COMPLIANT TO CURRENT RoHS DIRECTIVES.

BY ND		CHK AP	3RD ANGLE 		<p>POSITRONIC BELIEVES THE DATA ON THE DRAWING TO BE RELIABLE. THE USER EMPLOYS SUCH INFORMATION AT HIS OWN DISCRETION AND RISK.</p> <p>POSITRONIC ASSUMES NO RESPONSIBILITY FOR RESULTS OBTAINED OR DAMAGES INCURRED FROM USE OF SUCH INFORMATION IN WHOLE OR IN PART.</p> <div><p><b>Positronic®</b> CONNECTPOSITRONIC.COM</p></div>
APR AB		RELEASED DATE: 2023-11-02	SCALE NTS		
TOLERANCES ±0.03mm [.001 INCHES] FOR MALE CONTACT MATING DIAMETERS ±0.08mm [.003 INCHES] FOR CONTACT TERMINATION DIAMETERS ±0.13mm [.005 INCHES] FOR ALL OTHER DIAMETERS ±0.38mm [.015 INCHES] FOR ALL OTHER DIMENSIONS ±5° FOR ALL ANGLES DIMENSION ARE IN MILLIMETERS [INCHES]			PART NUMBER MCDD44S1000K/AA-15		
			TITLE MCDD44S1000K/AA-15		SERIES MACH-D
			CREATED ON: 2023-11-02	SHEET SHEET 1 OF 1	REV A

6

5

4

3

2

1