

6

5

4

3

2

1

D

D

C

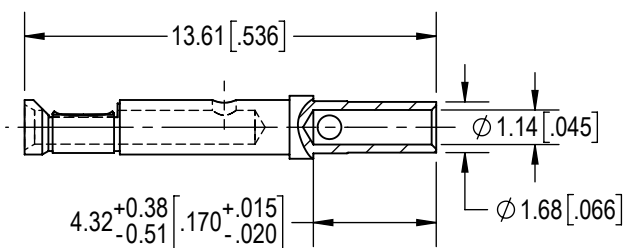
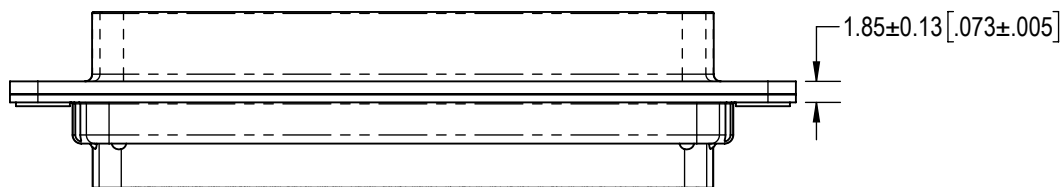
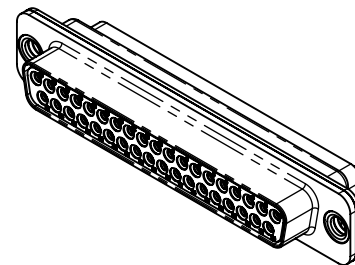
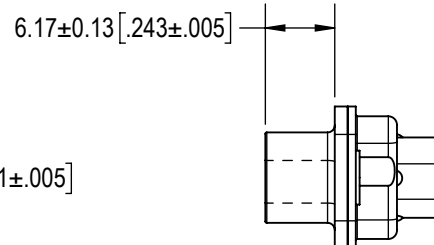
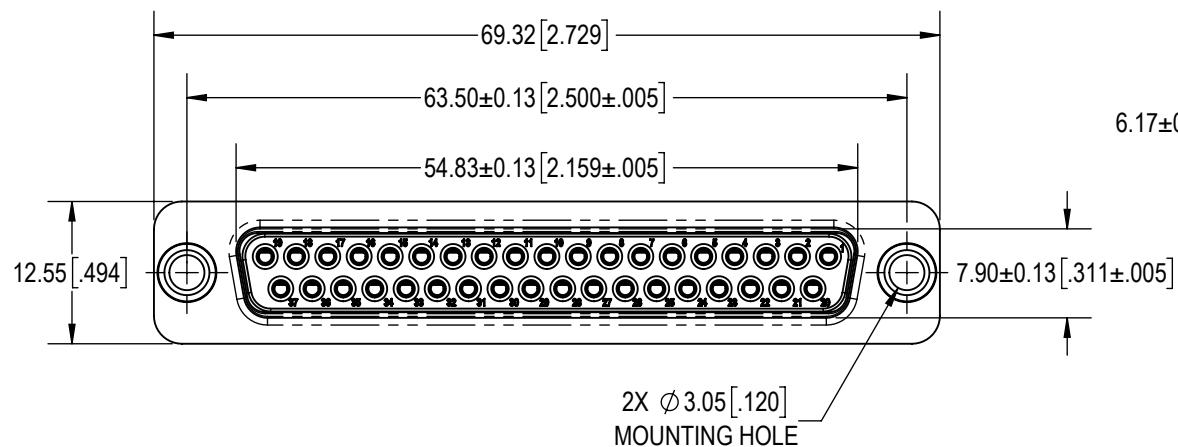
C

B

B

A

A



37X FEMALE CONTACT (ENLARGED)

NOTES:

- MATERIAL AND FINISHES:
INSULATOR: GLASS FILLED DAP PER ASTM-D-5948, SDG-F, UL 94V-0, COLOR: GREEN.
CONTACTS: PRECISION MACHINED COPPER ALLOY, 1.27µ [.000050] GOLD OVER NICKEL PLATE.
SHELLS: PRECISION-MACHINED ALUMINUM, ELECTROLESS NICKEL PLATE.
RIVETS: STAINLESS STEEL, PASSIVATED.
- DETAILED PRODUCT, MECHANICAL AND ELECTRICAL INFORMATION IS AVAILABLE IN THE LATEST STANDARD DENSITY PRODUCT PUBLICATION AT CONNECTPOSITRONIC.COM
- CRIMPING TOOL INFORMATION IS AVAILABLE AT WWW.CONNECTPOSITRONIC.COM/CrimpToolCrosstlist.
- PRODUCT IS COMPLIANT TO THE CURRENT RoHS DIRECTIVE.

BY AB	CHK AP	3RD ANGLE 	POSITRONIC BELIEVES THE DATA ON THE DRAWING TO BE RELIABLE. THE USER EMPLOYS SUCH INFORMATION AT HIS OWN DISCRETION AND RISK. POSITRONIC ASSUMES NO RESPONSIBILITY FOR RESULTS OBTAINED OR DAMAGES INCURRED FROM USE OF SUCH INFORMATION IN WHOLE OR IN PART.	
APR AB	RELEASED DATE: 2023-11-11	SCALE NTS	PART NUMBER MCD37S1000K/AA-15	SERIES MACH-D
TOLERANCES ±0.03mm [.001 INCHES] FOR MALE CONTACT MATING DIAMETERS ±0.08mm [.003 INCHES] FOR CONTACT TERMINATION DIAMETERS ±0.13mm [.005 INCHES] FOR ALL OTHER DIAMETERS ±0.38mm [.015 INCHES] FOR ALL OTHER DIMENSIONS ±5° FOR ALL ANGLES DIMENSION ARE IN MILLIMETERS [INCHES]				
TITLE MCD37S1000K/AA-15				
CREATED ON: 2023-11-11	SHEET SHEET 1 OF 1	REV A		