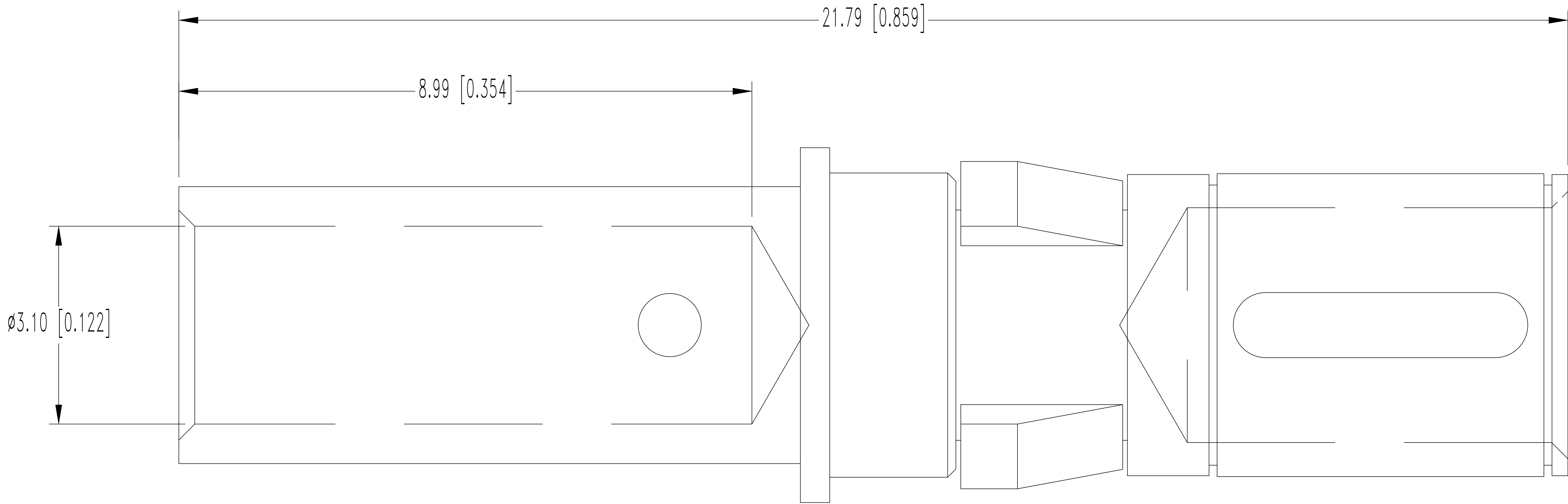


THIS DRAWING CONTAINS INFORMATION PROPRIETARY TO POSITRONIC AND IT'S SUBSIDIARIES. POSITRONIC BELIEVES THE DATA ON THIS DRAWING TO BE RELIABLE. SINCE THE TECHNICAL INFORMATION IS GIVEN FREE OF CHARGE, THE USER EMPLOYS SUCH INFORMATION AT HIS OWN DISCRETION AND RISK. POSITRONIC ASSUMES NO RESPONSIBILITY FOR RESULTS OBTAINED OR DAMAGES INCURRED FROM USE OF SUCH INFORMATION IN WHOLE OR IN PART.

		SK3456				
DATE	REV	REVISION RECORD		APP	DR	CK
8-16 04	B	ECO	22872	RCW	YK	TK
10-21 16	C	ECO	53048	CM	CM	CM



- NOTES:
- 1. MATERIALS AND FINISHES:
CONTACT: PRECISION-MACHINED COPPER ALLOY WITH GOLD FLASH OVER NICKEL PLATE.
RETENTION RING: POLYETHERIMIDE, COLOR BLACK.
 - 2. ELECTRICAL CHARACTERISTICS:
CONTACT CURRENT RATING: 60 AMPERES, CONTINUOUS.
INITIAL CONTACT RESISTANCE: 0.005 OHMS MAXIMUM.
 - 3. FOR USE WITH 9509-0-0-0 CRIMP TOOL.
 - 4. DIMENSIONS ARE IN MILLIMETERS [INCHES].



POSITRONIC INDUSTRIES INC.

SPRINGFIELD, MISSOURI 65801

DECIMAL TOL.

± 0.38 [0.015]

ANGULAR TOL.

± 5°

CBD SERIES

TITLE

DATE

10-19-00

SCALE

N.T.S.

DRAWING NUMBER

SK3456

DRAWN BY

Y. KELLEYBREW

APPROVED BY

RCW

REV.

C

FC4010D