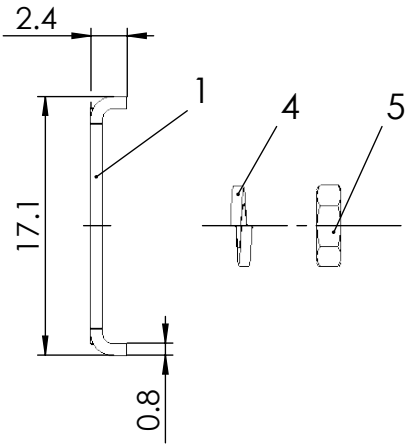
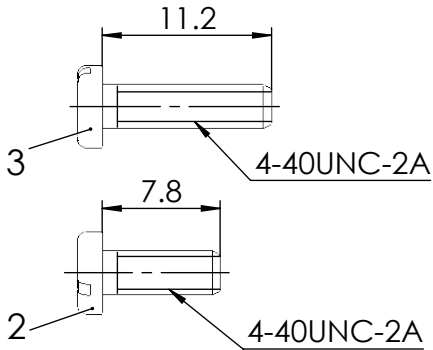
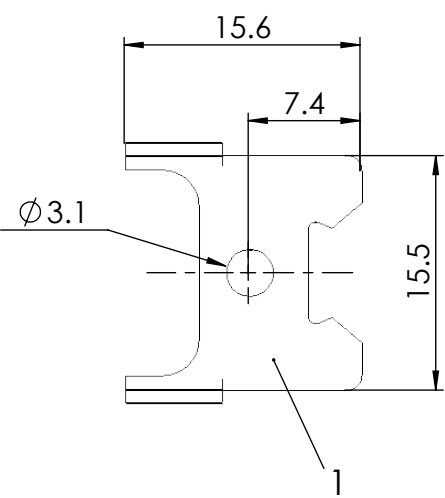



COMMENT:
ALL RIGHTS ARE RESERVED BY US FOR THIS DRAWING. WITHOUT OUR PRIOR CONSENT,
IT MAY NEITHER BE DUBLICATED NOR MADE AVAILABLE TO A THIRD PARTY,
AND IT ALSO MAY NOT BE IMPROPERLY USED BY TE RECEIVER, OR A THIRD PARTY.

1	2		3		4		5	6
	Part No.	Pos. 1 Lock plate (quantity)	Pos. 2 Screw 4-40 / 7.8mm (quantity)	Pos. 3 Screw 4-40 / 11.2mm (quantity)	Pos. 4 Spring washer (quantity)	Pos. 6 Nut (quantity)	Package	Notice
A	Standard Assembly	F1044-5	2	2	-	2	in pairs	Packed together in a bag
	Assembly on FCT Hood	F1044-5H	2	2	2	2	in pairs	Packed together in a bag



RoHS compliant
by exemption

MATERIAL NO.	TYPE DESCRIPTION
1731120967	F1044-5
1731120366	F1044-5H

F1044		Stainless steel		blank			
Part No.		Material		Surface plating/Colour/Class			
THIS DRAWING CONTAINS INFORMATION THAT IS PROPRIETARY TO MOLEX ELECTRONIC TECHNOLOGIES, LLC AND SHOULD NOT BE USED WITHOUT WRITTEN PERMISSION							
SYMBOLS	DIMENSION UNITS	SCALE	MEASUREMENTS WITHOUT TOLERANCE ACC. TO ISO 2768-m		<div>molex</div> <div>FCT-Lockplate F1044-5</div>		
▽ = 0	mm	2:1	CURRENT REVISION <div>DRWN: DRAWN BY FVetter 15-02-2019</div> <div>APPR: APPR BY MTeubel 15-02-2019</div>				
▽ = 0							
▽ = 0							
▽ = 0			INITIAL REVISION <div>DRWN: DRAWN BY ADenzinger 08-02-2007</div> <div>APPR: APPR BY ADenzinger 17-07-2007</div>		PRODUCT CUSTOMER DRAWING		
▽ = 0	3	24130					
▽ = 0	2	22302					
▽ = 0	1		MATERIAL NUMBER			REVISION	
▽ = 0	REV.	CH.-NO.					
☒ = 0	REPLACEMENT FOR:		THIRD ANGLE PROJECTION	DRAWING	DOCUMENT NUMBER	CUSTOMER	SHEET NUMBER
■ = 0				A4-SIZE	F1044-5_D	GENERAL MARKET	1 OF 1
▽ = 0							

molex

FCT-Lockplate F1044-5

see table

SHEET
NUMBER
1 OF 1