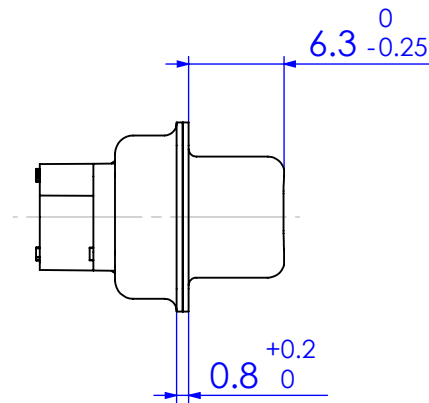
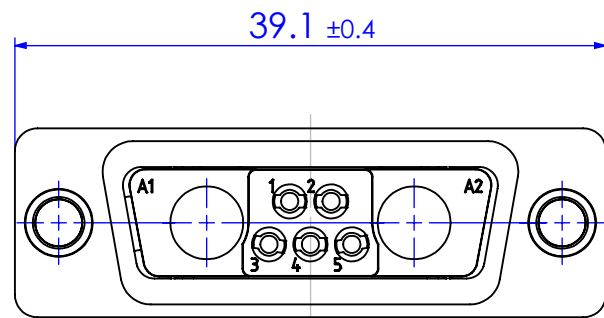
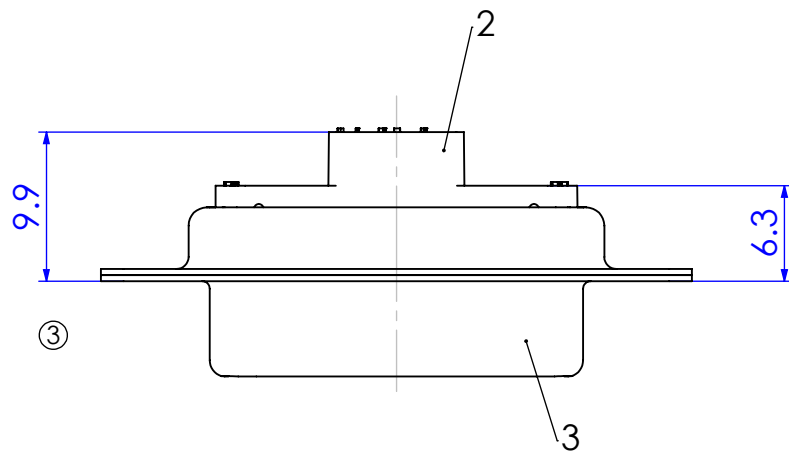
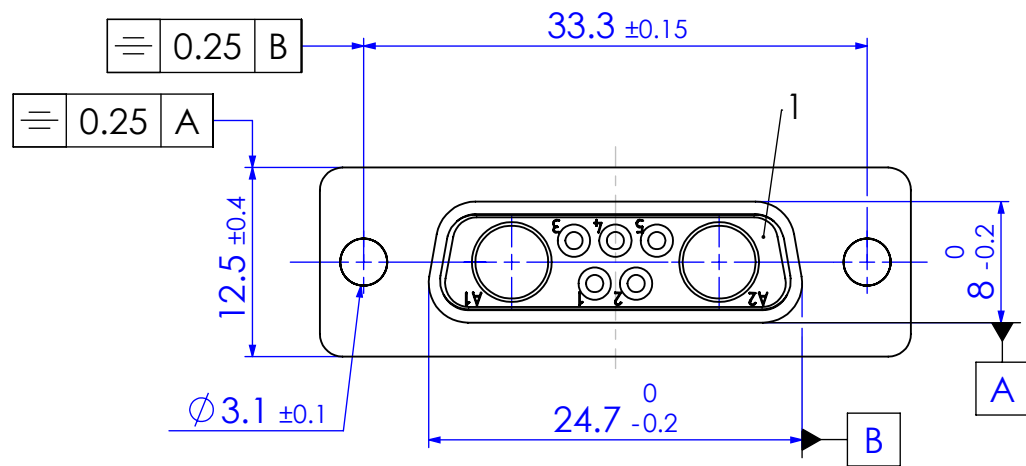


COMMENT:
ALL RIGHTS ARE RESERVED BY US FOR THIS DRAWING. WITHOUT OUR PRIOR CONSENT,
IT MAY NEITHER BE DUPLICATED NOR MADE AVAILABLE TO A THIRD PARTY.
AND IT ALSO MAY NOT BE IMPROPERLY USED BY THE RECEIVER, OR A THIRD PARTY.



*1) y for series FL or FU

Technical data for standard (FU)



Crimp contacts FK20S (AWG 20-24/1,3 μ m Au) included in delivery

3	1	Shell	Steel	tin plated
② 2	1	Insulator rear part	PEI (-55°C- +130°C)	green
1	1	Insulator front part	PBT	green
No.	St.	Part	Type Description/Material	Surface plating/Colour/Class

Technical data for standard (FL)

① Crimp contacts not supplied with connector. Contacts must be ordered separately.

3	1	Shell	Steel	tin plated
2	1	Insulator rear part	PA66 (-55°C- +115°C)	black
1	1	Insulator front part	PBT	black
No.	St.	Part	Type Description/Material	Surface plating/Colour/Class

				Measurement without tolerance occ.. to ISO 2768-m	SCALE 2:1	TITLE D-Sub Crimp Connector			
				NAME / DATE					
			DRAWN	ADenzinger 16-05-2006					
			CHECKED	MTeubel 18-11-2011					
3	17-11-2011	23106				DWG.NO.	Fy7W2S7-K121		REV.
2	29-05-2007	22026							
1	16-05-2006	21782							
REV.	DATE	CH.-NO.	ORIGINAL: DIN A3-DRAWING AS A FILE			REPLACEMENT FOR:	Fy7W2S7-K121 a		PAGES