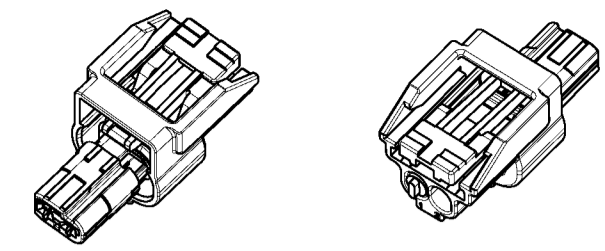
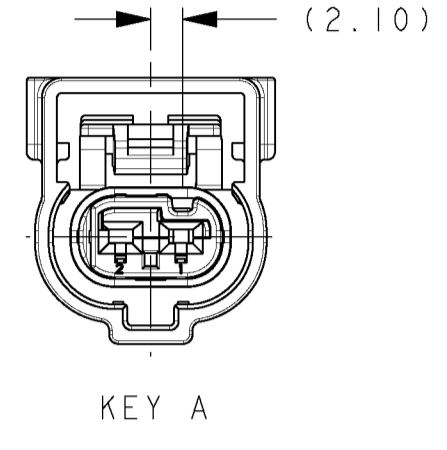


ASSEMBLY PART NUMBER CHART										
PART NUMBERS						COMPONENTS				
APTIV	REV	N/P	MVL	REV	KEY OPTION	COLOR	INSULATOR (HOUSING)	TPA (BLUE)	RING SEAL (GREEN)	CPA (RED) (OPTIONAL)
							ITEM 1	ITEM 2	ITEM 3	ITEM 4
							PA66 GF35	PA66 GF35	SILICONE	PA66 GF35
13806231	01	AB	F495100	A	A	BLACK	S106100	S506100	C895100	N/A
13848932	01	AA	F595100	A	B	LT GRAY	S206100	S606100		
15532568	01	AA	F695100	A	C	DK GRAY	S306100	S706100		
13973607	02	AA	F460400	B	A	BLACK	S106100	S506100		
33511726	02	AA	F560400	B	B	LT GRAY	S206100	S606100		
33511727	02	AA	F660400	B	C	DK GRAY	S306100	S706100	F752210	

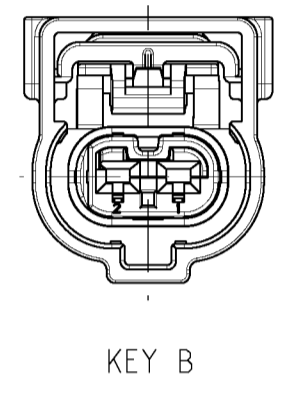
ITEM NO.	DESCRIPTION	PLATING OR COLOR	SUPPLIER		APTIV PN	GRIP CODE	WIRE SIZE (MM ²)	INSULATION DIAMETER RANGE	MATERIAL/SPEC NO
			NAME	NUMBER					
5	1.20 SYSTEM TERMINAL	TIN	MVL	54001864	13576990	18	1-1.5	1.70mm-2.41mm	COPPER ALLOY / NA
	1.20 SYSTEM TERMINAL	TIN	MVL	54002006	13806233	20	0.5-0.75	1.20mm-1.90mm	COPPER ALLOY / NA
	1.20 SYSTEM TERMINAL	TIN/SILVER	MVL	54001866	13587331	18	1-1.5	1.70mm-2.41mm	COPPER ALLOY / NA
	1.20 SYSTEM TERMINAL	TIN/SILVER	MVL	54002007	15521522	20	0.5-0.75	1.20mm-1.90mm	COPPER ALLOY / NA
	1.20 SYSTEM TERMINAL	SILVER	MVL	F731400	13805376	18	1-1.5	1.70mm-2.41mm	COPPER ALLOY / NA
	1.20 SYSTEM TERMINAL	SILVER	MVL	F931400	13805375	20	0.5-0.75	1.20mm-1.90mm	COPPER ALLOY / NA
	1.20 SYSTEM TERMINAL	GOLD	MVL	54001863	13579640	18	1-1.5	1.70mm-2.41mm	COPPER ALLOY / NA
	1.20 SYSTEM TERMINAL	GOLD	MVL	54002005	13827658	20	0.5-0.75	1.20mm-1.90mm	COPPER ALLOY / NA
6	1.20 SYSTEM CABLE SEAL ROUND	RUST RED	MVL (QSR)	C528010 (A-0419)	13898958		18-16 AWG 1.00-1.25mm ²	1.90mm-2.41mm	SILICONE
	1.20 SYSTEM CABLE SEAL ROUND	GREEN	MVL (QSR)	(A-0419C)	33402838		22-20 AWG 0.50-0.75mm ²	1.40mm-1.90mm	SILICONE
	1.20 SYSTEM CABLE SEAL ROUND	TAN	MVL (QSR)	C073510 (A-0419B)	33511987		0.35mm ²	1.20mm-1.40mm	SILICONE
7	1.20 SYSTEM SEAL PLUG	GREEN	MVL (QSR)	C628010 (A-0412)	13898957		OPTIONAL AS REQUIRED		SILICONE



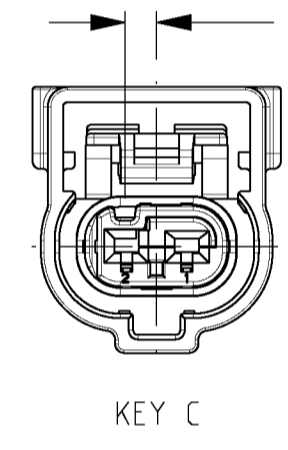
ISOMETRIC VIEW
SCALE 1:1



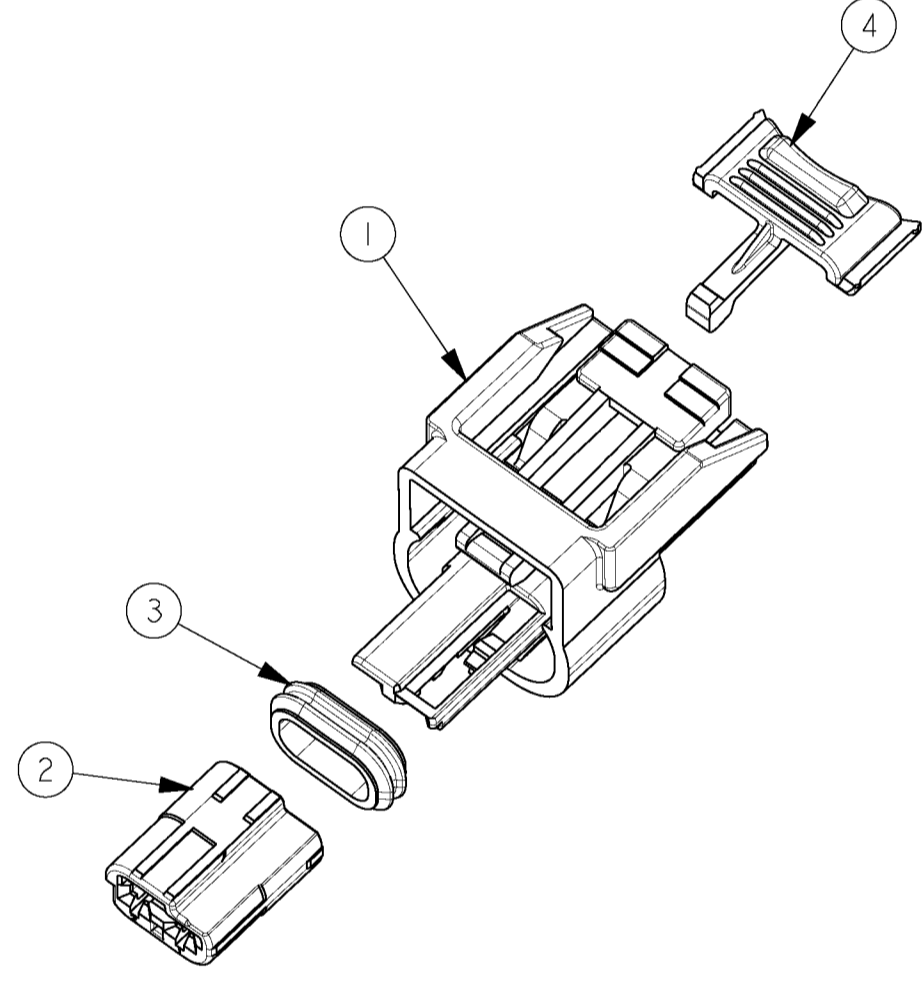
KEY A



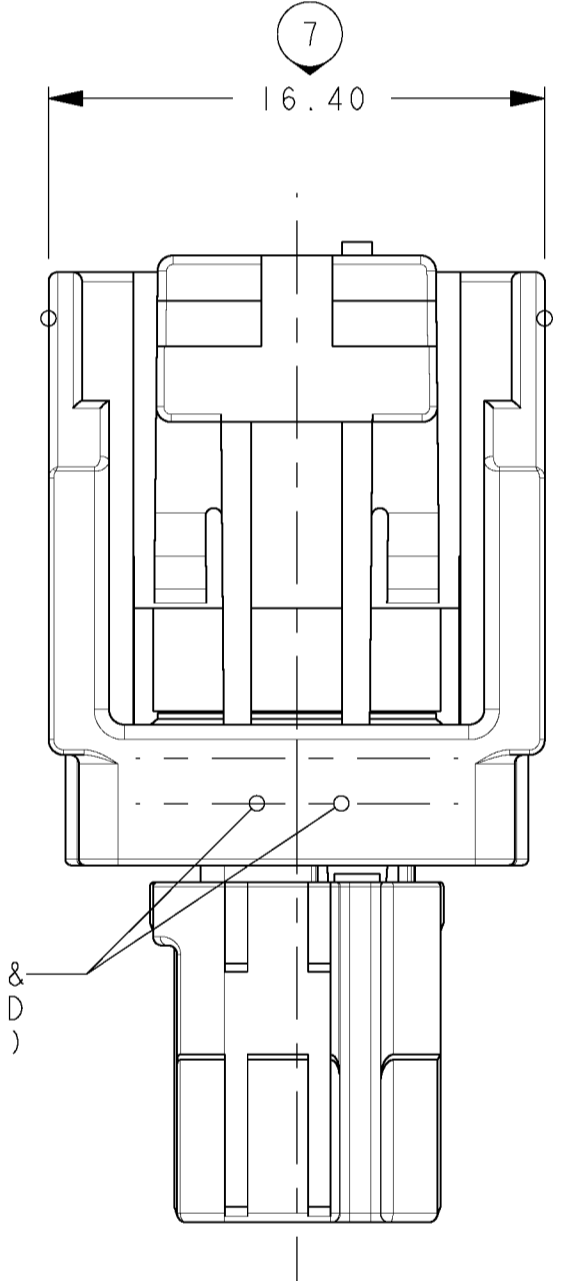
KEY B



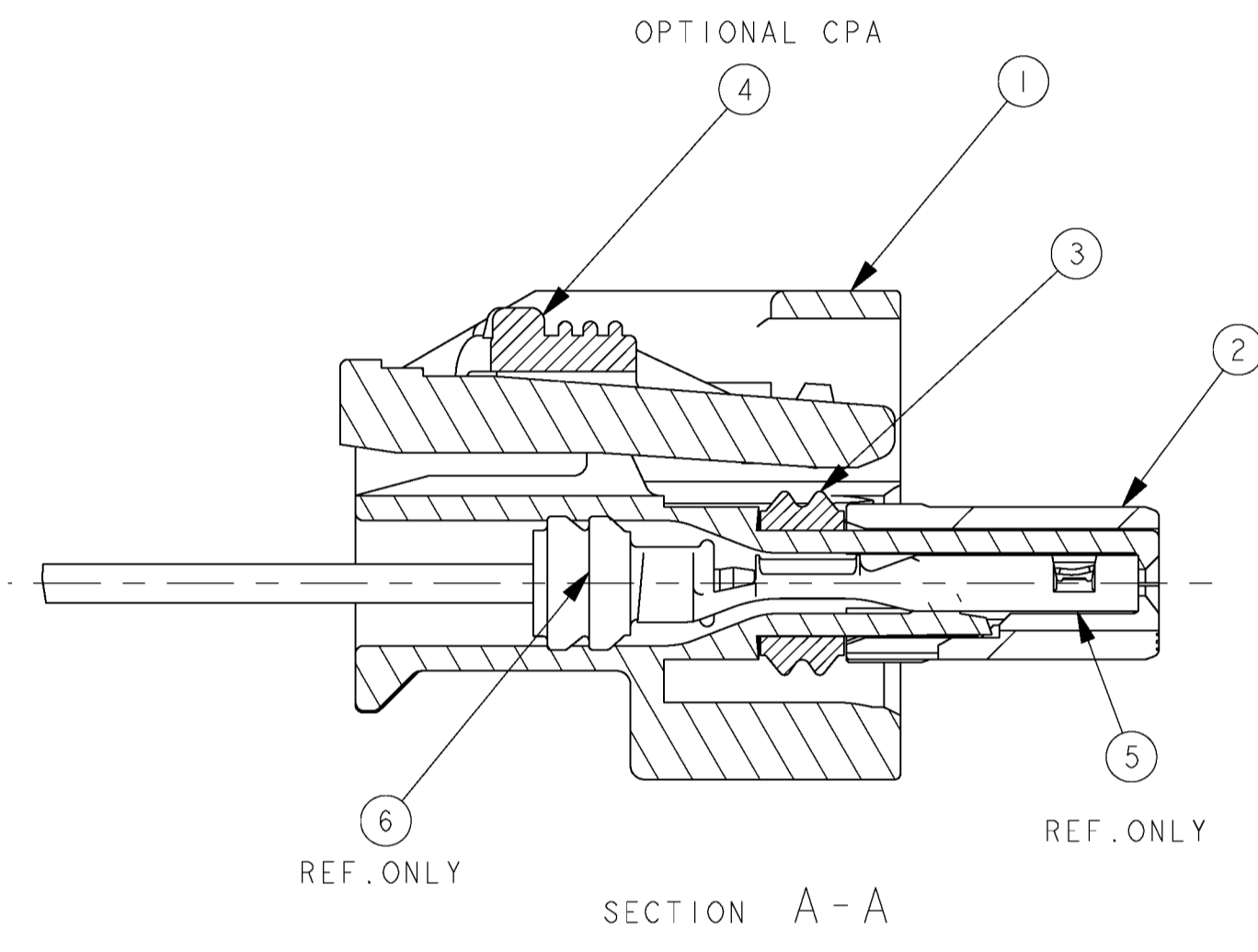
KEY C



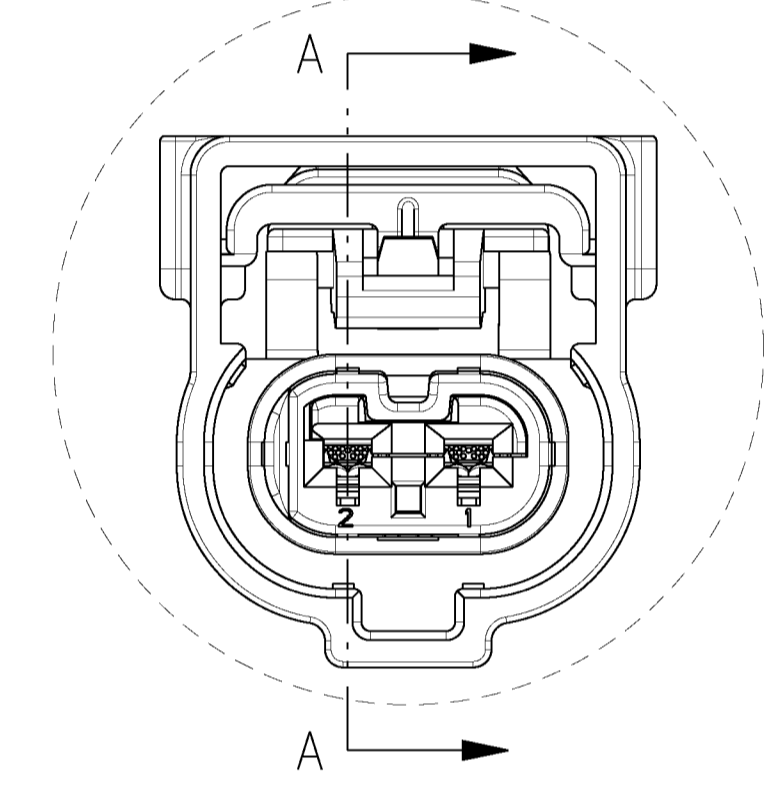
EXPLODED VIEW
(OPTIONAL CPA SHOWN)
SCALE 2:1



(ASSEMBLY DATE CODE & PART NUMBER APPLIED IN THIS LOCATION)

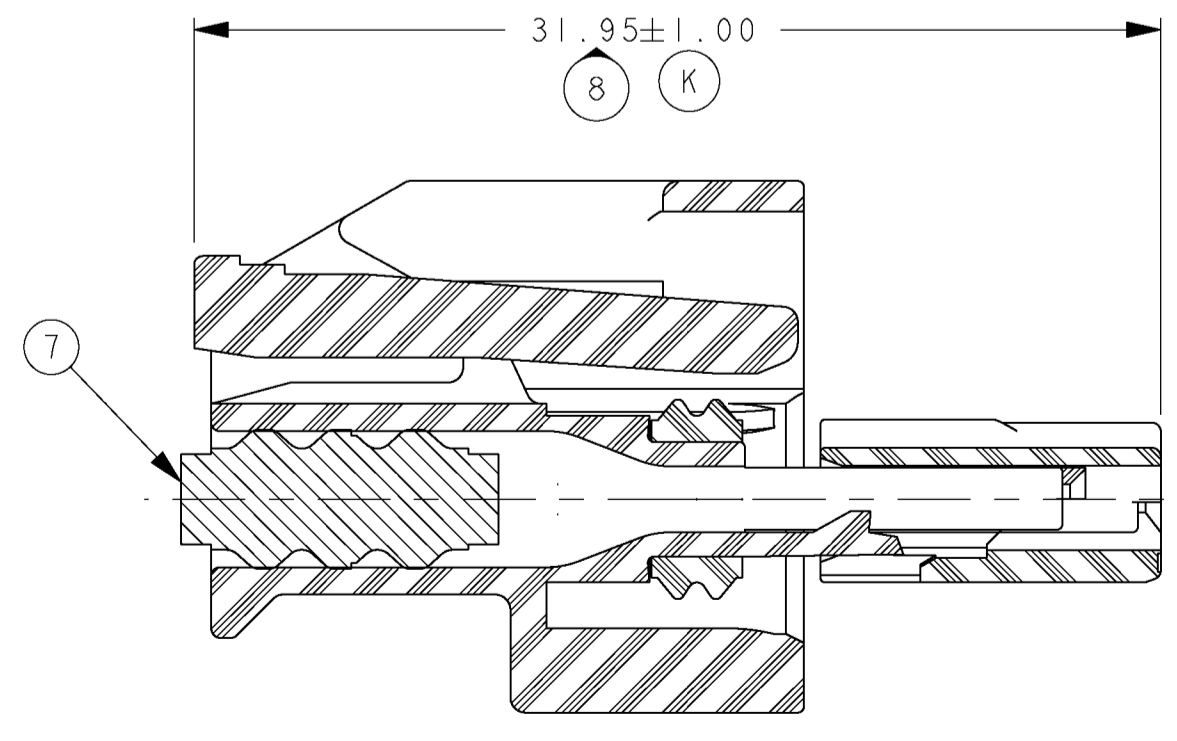


SECTION A-A

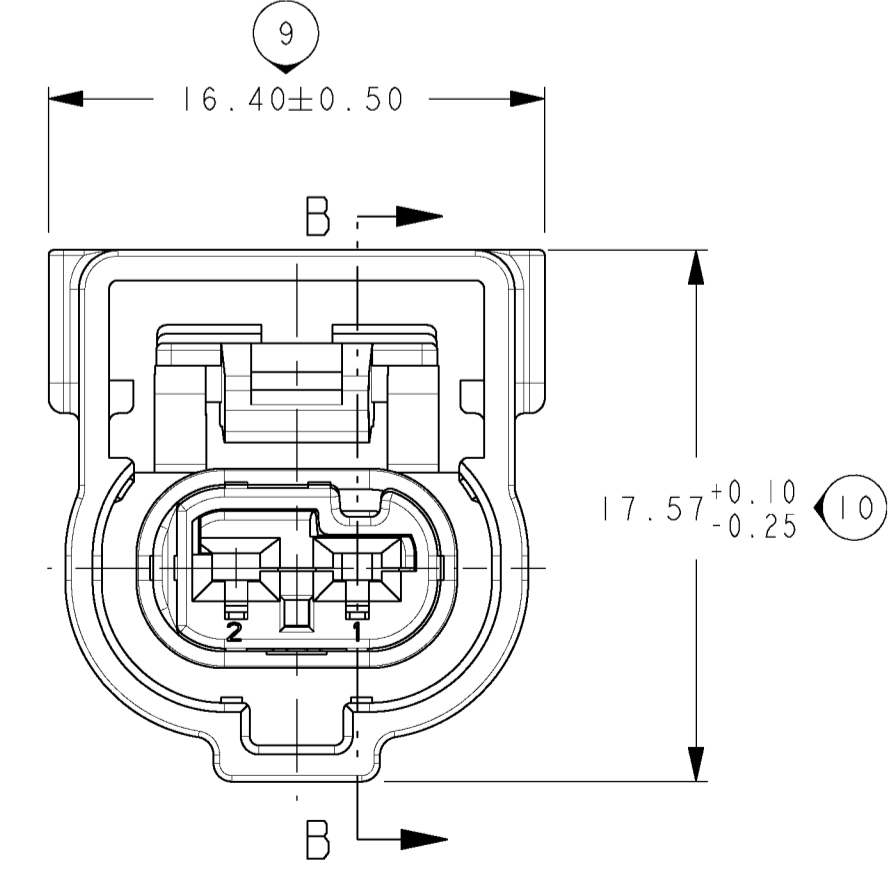


NOTES:

- VALIDATED TO SAE/USCAR-2 REV 5
 - VALIDATED TO THE FOLLOWING TEMP, VIBRATION, AND SEALING CLASSES:
 - GMW3191 SECTION 4.28 V4 T4 (155°C) WITH GOLD OR SILVER TERMINALS
 - SAE/USCAR-2 V3 T4 (150°C) WITH GOLD OR SILVER TERMINALS
 - SAE/USCAR-2 V3 T3 (125°C) / V2 T4 (150°C) WITH TIN/SILVER TERMINALS
 - SAE/USCAR-2 V2 T3 (125°C) WITH TIN TERMINALS
 - SAE/USCAR-2 SEALING S3 T4 (150°C) (ISO16750-9K EQUIVALENT)
 - CONNECTOR MAY BE USED WITH THE FOLLOWING TERMINALS:
 - DELPHI APEX 1.2 TERMINALS LISTED IN THE APPLICABLE COMPONENTS CHART ON THIS DRAWING WITH WIRE SIZES DEFINED IN NOTE 4.
 - SEE DELPHI DRAWING C18001-1-2-CUST FOR SPECIFIC TERMINAL DETAILS AND CRIMPING REQUIREMENTS
 - PLATING OF TERMINALS AND MATING DEVICE BLADES MUST BE COMPATIBLE
 - CONNECTOR SYSTEM VALIDATED TO USCAR-2 REQUIREMENTS WITH THE FOLLOWING RANGE OF WIRE SIZES AND TYPES IN CONJUNCTION WITH APPROPRIATE COMPONENTS FOUND IN THE "APPLICABLE COMPONENTS" CHART:
 - AWG - WIRE SIZES: 22AWG - 16AWG
INSULATION DIAMETER: 1.50mm MIN - 2.41mm MAX
WIRE TYPE: MIL123-A, MS-8288, MS-9502 OR EQUIVALENT (STRUCTURE AND PROPERTIES ACCORDING TO SAE J1128)
 - METRIC - WIRE SIZES: 0.35mm² - 1.25mm²
INSULATION DIAMETER: 1.20mm MIN - 2.30mm MAX
WIRE TYPE: FLR2X, FLR9X OR EQUIVALENT (STRUCTURE AND PROPERTIES ACCORDING TO ISO 6722)
- CONTACT DELPHI ENGINEERING REGARDING USE OF OTHER WIRE SIZES AND/OR TYPES
- WIRE AND INSULATION TYPE MUST BE APPROPRIATE FOR TEMPERATURE CLASS & APPLICATION ENVIRONMENT
- CONNECTOR IS MATE COMPATIBLE WITH DEVICES WHICH CONFORM WITH THE FOLLOWING USCAR INTERFACE SPECIFICATIONS:
 - 120-S-002-1-201 (WITH EWCAP-001 TYPE 120-T BLADES)
 - 120-S-002-1-202 (WITH EWCAP-001 TYPE 120-T BLADES)
 - ANNUAL QUALITY REQUIREMENTS:
 - IT IS PERMISSIBLE TO PERFORM CONTINUOUS CONFORMANCE PER DELPHI SPECIFICATION #AQA-001 INSTEAD OF ANNUAL LAYOUT AND ANNUAL PV REQUIREMENTS OF ISO TS16949 AND SAE/USCAR-2 REV 5. FOR TERMINAL TO CONNECTOR AND TPA TO CONNECTOR ONLY.
 - SOURCE ID, MOLD & CAVITY ID SIGNIFIES TOOL OWNERSHIP, FOR REFERENCE
 - (K) INDICATES IN-PROCESS INSPECTION FOR MANUFACTURING DIMENSIONS OR SPECIFICATIONS.



SECTION B-B



554287	-	ALL PARTS - UPDATED WIRE SIZE COLUMN FOR ITEM 5 (14MY21)
ECN-13-01299	APP CHRT	ADDED GREEN CABLE SEAL 33402838, REMOVED BLUE CABLE SEAL 54200391/13576991
ECN-13-01227	-	ECO 423850 - UPDATE VIEWS FOR DESIGN IMPROVEMENT TO CPA F752210, DELPHI P/N'S ADDED FOR MVL P/N'S, REVISED NOTE 2 - UPDATE PERFORMANCE DATA FOR TIN/SILVER PLATING
ECN-12-01302	-	UPDATE CPA IN ASSY VIEWS
ECN-12-01227	APP CHRT	PART BOM F695100 COLOR WAS BROWN, F660400 COLOR WAS BROWN ADD PART NUMBER C073510, ADD 0.35MM & 22GA WIRE INFO
ECN-12-00892	-	NOTES REVISE NOTE 4 WITH 0.35MM & 22GA INFO NEW RELEASE
ECN-NO.	ZONE	CHANGE DESCRIPTION
PROJECT SPEC	PACKAGING SPEC	APPLICATION SPEC
APEX 1.2		
TOLERANCES	±0.1	±2*
COMPART W:	SEE NOTE 5	SEE CHART
DO NOT MEASURE DRAWING	TOOL NO.	ECO Loc. Code AN
DATE	NAME	TITLE
2018/09/11	Frank HOLLER	PROJECT
2018/10/03	Matt MAJOR	PROJECT
2018/10/03	Scott BIAN	PROJECT
2018/10/03	JIM CAMPBELL	PROJECT
FILE NAME	PCC0682863	DOCUMENT UNDER PDS CONTROL. NO MODIFICATION ALLOWED OUTSIDE

APTIV

2W SensoMate 12 Assembly

12MM USCAR INTERFACE

PCC0682863

SERIAL RELEASED

See Table