
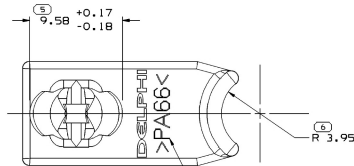
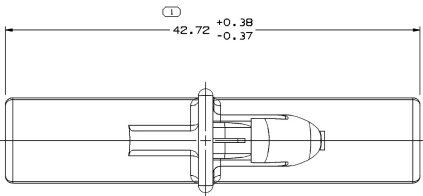
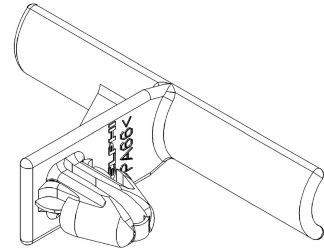
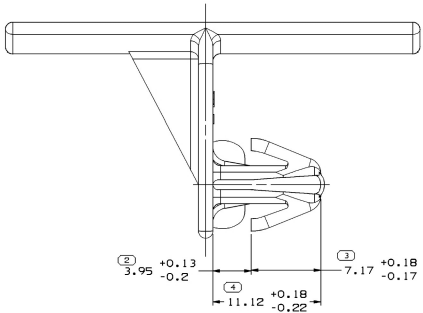
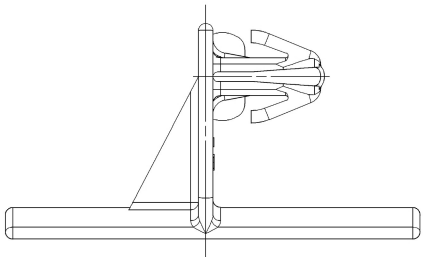
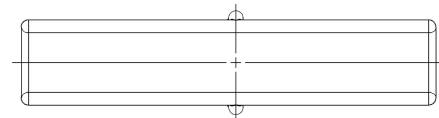


SYMBOL DEFINITION		TOTAL NO. OF SYMBOLS ON DRAWING	LAST USED
A DIMENSION WITHOUT AN INSPECTION REPORT SYMBOL  DOES NOT REQUIRE INSPECTION. IT MAY BE CONTROLLED ON AN INDIVIDUAL COMPONENT DRAWING.		6	6



MAT'L RECYCLING CODE OPTIONAL



#### NOTES

- UNLESS OTHERWISE SPECIFIED AND/OR INDICATED: DIMENSIONS ARE TO FACE OF VIEW SHOWN AND AUTOMATICALLY ROUNDED BY COMPUTER FOR INSPECTION (SEE MATH MODEL FOR PRECISE DIMENSIONS). FOR ALL OTHER DIMENSIONS NOT SHOWN BUT REQUIRED FOR TOOL BUILD, SEE MATH MODEL FOR PRECISE TOOL PATH DATA.
- CLIP TO SNAP INTO Ø5.85/6.85 HOLE IN 0.9/2.25 THICK STOCK.
- MATERIAL RECYCLING CODE PER ISO 11469, (2.31X10.1) RAISED CHARACTERS AS SHOWN TO BE LOCATED ON ANY EXTERIOR SURFACE. OPTIONAL CONSTRUCTION TO BE "PED" OR NO LOGO.
- THIS PART IS NOT CONTROLLED FOR AUTOMATIC FEEDING.
- (2.31X10.1) RAISED DELPHI CORPORATE BRAND TO BE LOCATED ON ANY EXTERIOR SURFACE, PREFERABLY VISIBLE AT FINAL ASSEMBLY. OPTIONAL CONSTRUCTION TO BE "PED" OR NO LOGO.
- THIS PRODUCT IS NOT CATEGORIZED AS AN APPEARANCE ITEM, MINOR IMPERFECTIONS INCLUDING, BUT NOT LIMITED TO, FLOW MARKS, COLOR BLEMISHES, GATE VESTIGE, AND SOFT FLASH THAT DO NOT AFFECT THE FIT, FORM, OR FUNCTION OF THE PART ARE PERMISSIBLE PER DPNP-4.7-CS-01.
- WEB DETACHMENT DURING NORMAL HANDLING & SHIPPING IS PERMISSIBLE.

DRAWING NUMBER									
15373518									
SIZE	SCALE	1 FRAME NO	SHEET NO	1 OF 1	REV	05	TYP		
A1x3	5:1	2	2	1	1	R	-		

1535BB16	01	AC	POLYAMIDE COMPOUND BLUE	1.222
12020933	04	-	POLYAMIDE COMPOUND BLACK	1.222
PART NO	REV	N/P	MATERIAL SPECIFICATION AND COLOR	VOL CM³
9				

1535BB16	01	AC	POLYAMIDE COMPOUND BLUE	1.222
12020933	04	-	POLYAMIDE COMPOUND BLACK	1.222
PART NO	REV	N/P	MATERIAL SPECIFICATION AND COLOR	VOL CM³
9				