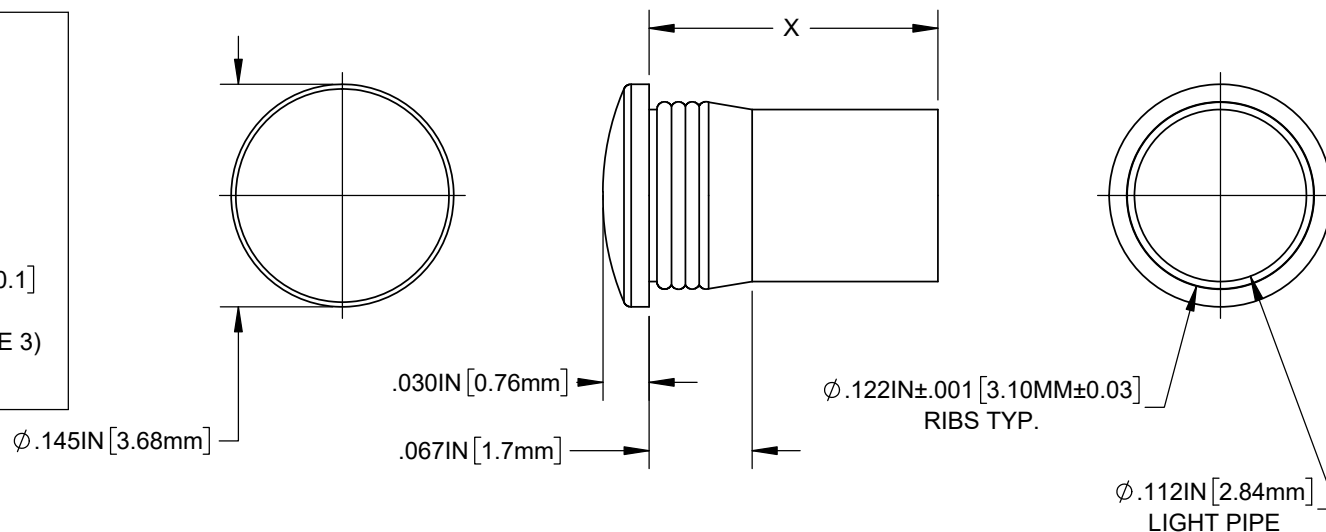
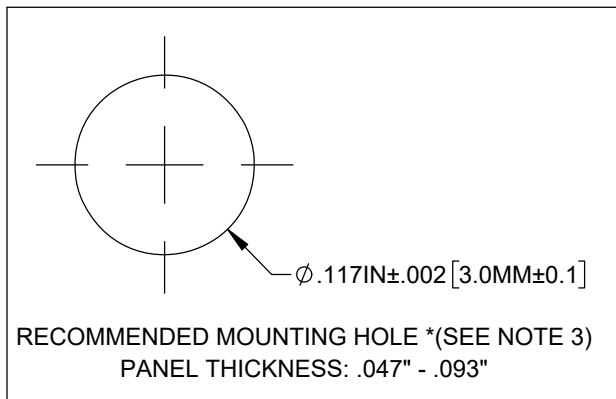


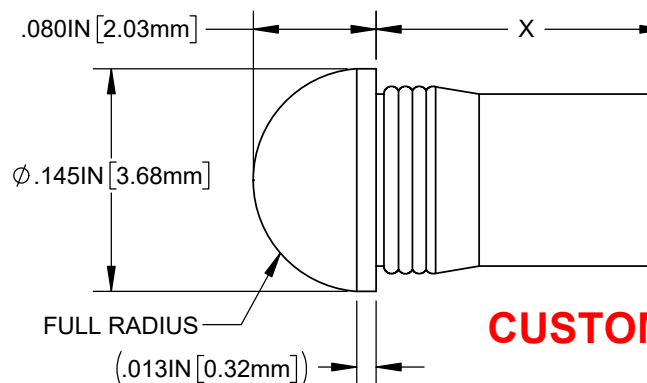
NOTES:

1. MATERIAL: POLYCARBONATE, UL94V-0, CLEAR.
2. OPERATING TEMPERATURE: -40°C to 120°C.
3. THE RECOMMENDED REFERENCED MOUNTING HOLE IS SPECIFIED FOR EASE OF ASSEMBLY AND IP54 APPLICATION REQUIREMENTS AS TESTED BY BIVAR. THE LIGHT PIPE(S) MUST BE INSERTED FIRMLY PERPENDICULAR INTO THE PANEL OR SURFACE'S HOLE OPENING WITH THE FLANGE FULLY FLUSHED AFTER PANEL INSTALLATION. ADJUSTMENTS TO THESE MOUNTING HOLE DIMENSIONS CAN BE MADE BASED ON AVAILABLE TOOLS, EQUIPMENT, PANEL MATERIAL, AND MFG CAPABILITIES TO PROPERLY FIT THE LIGHT PIPE(S) IN THE PANEL OR SURFACE FOR ITS INTENDED APPLICATION.

REVISIONS			
REV.	DESCRIPTION	DATE	APPROVED
A	ENGINEERING RELEASE	06/07/24	A.V.
B	REDEFINE CTQ	9/19/2024	A.V.
C	UPDATED DIMENSIONS	10/18/2024	A.V.
D	UPDATE PN LIST	1/14/2025	A.V.
D1	UPDATED MOUNTING HOLE NOTE	4/16/2025	A.V.



PART NO.	X = BODY LENGTH	LENS FACE
GLP2-100-R-54	0.100IN [2.54mm]	ROUND
GLP2-125-R-54	0.125IN [3.2mm]	ROUND
GLP2-215-R-54	0.215IN [5.5mm]	ROUND
GLP2-250-R-54	0.250IN [6.4mm]	ROUND
GLP2-350-R-54	0.350IN [8.9mm]	ROUND
GLP2-375-R-54	0.375IN [9.5mm]	ROUND
GLP2-500-R-54	0.500IN [12.7mm]	ROUND
GLP2-625-R-54	0.625IN [15.9mm]	ROUND
GLP2-750-R-54	0.750IN [19.0mm]	ROUND
GLP2-1000-R-54	1.000IN [25.4mm]	ROUND
GLP2-1200-R-54	1.200IN [30.5mm]	ROUND
GLP2-100-D-54	0.100IN [2.54mm]	DOME
GLP2-125-D-54	0.125IN [3.2mm]	DOME
GLP2-250-D-54	0.250IN [6.4mm]	DOME
GLP2-313-D-54	0.313IN [7.9mm]	DOME
GLP2-350-D-54	0.350IN [8.9mm]	DOME
GLP2-375-D-54	0.375IN [9.5mm]	DOME
GLP2-500-D-54	0.500IN [12.7mm]	DOME
GLP2-625-D-54	0.625IN [15.9mm]	DOME
GLP2-750-D-54	0.750IN [19.0mm]	DOME
GLP2-1200-D-54	1.200IN [30.5mm]	DOME
GLP2-7MM-D-54	0.276IN [7.0mm]	DOME




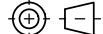
CUSTOMER USE DRAWING



ROUND FACE



DOME FACE

STANDARD TOLERANCE (UNLESS OTHERWISE SPECIFIED)		<div> 4 THOMAS, IRVINE, CA. 92618 TEL: (949) 951-8808 FAX: (949) 951-3974</div>		
DECIMALS	ANGULAR			
.X ± .1	X° ± 1°	<div>TITLE: PRESS-FIT PANEL MOUNT LIGHT PIPE (D/R), IP-54</div>		
.XX ± .01				
.XXX ± .005				
	<div></div>	<div><div>TITLE: PRESS-FIT PANEL MOUNT LIGHT PIPE (D/R), IP-54</div></div>		
DESIGNED: A. VALDEZ	DATE: 6/7/2024	<div><div>DRAWING NO: GLP2-XXX-Y-ZZ</div><div>REVISION: D1</div></div>		
REVISED: K. BARON	DATE: 4/16/2025	<div>SHEET SIZE</div>	<div>A</div>	<div>CAGE CODE: 32559</div>
CHECKED: R. PEREYRA	DATE: 4/16/2025	<div>SCALE: 8:1</div>		<div>SHEET # 1 OF 1</div>
CAD GENERATED DOCUMENT, DO NOT MEASURE DRAWING				