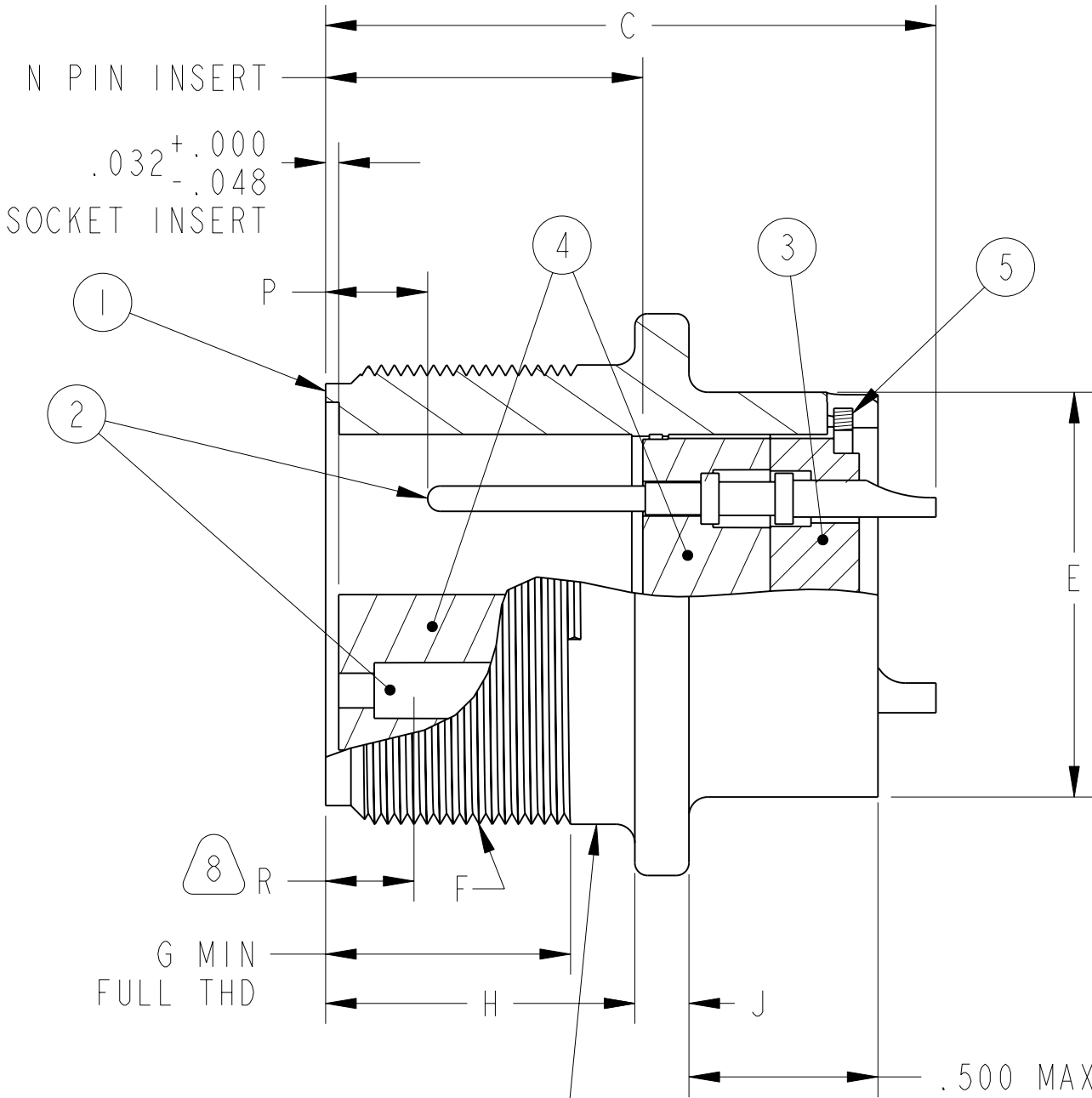
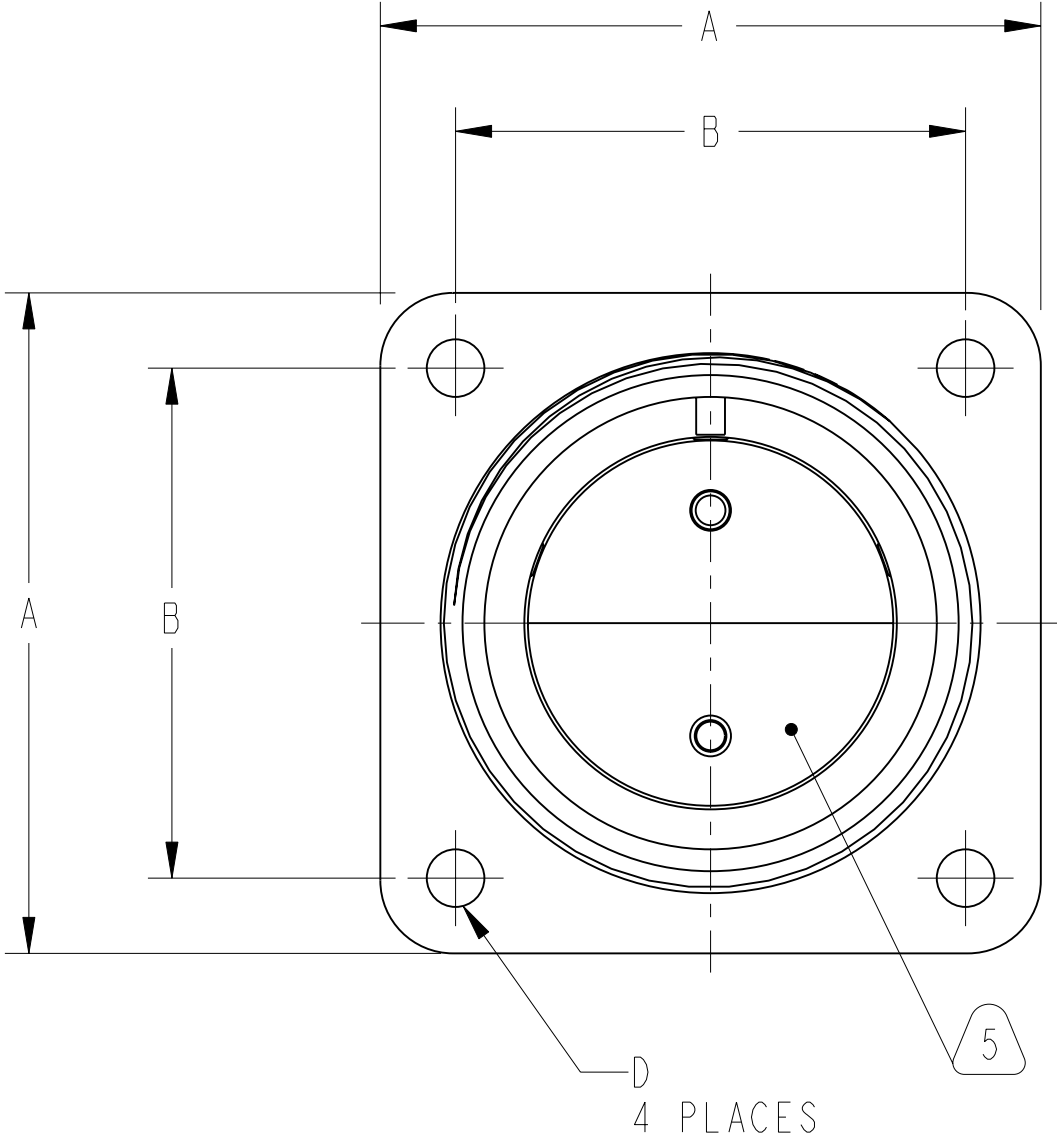
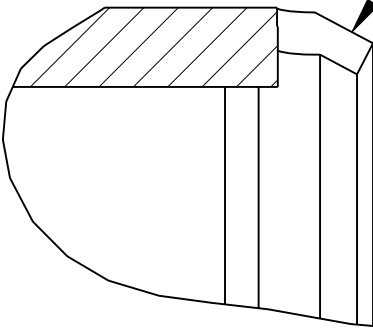


REV. A	SHEET 1 OF 2	91-830340/359
REVISIONS		
LTR	DESCRIPTION	DATE
A	INITIAL RELEASE	

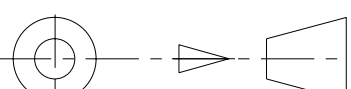
SIZE 12SL ONLY

FORM OVER



2 STAMP AMPHENOL 97- NUMBER ON THIS SURFACE PER 9-2811 CHARACTER HEIGHT .062 MINIMUM.
EXAMPLE:
AMPHENOL 97-3102A-22-14P (947)

POS	QTY	PART NUMBER	DESCRIPTION	NOTE
5	1	10-824966-XX	RING, RETAINING	
4	1	10-825820/839-P OR 10-825820/839-S	INSERT, PIN FRONT OR INSERT, SOCKET FRONT	6
3	1	10-825840/859 -P OR 10-825840/859-S	INSERT, PIN REAR OR INSERT, SOCKET REAR	6
2		SEE NOTE 1	CONTACTS	6
1	1	SEE COLUMN	SHELL	

PARTS LIST			
APPROVALS		DATE	<div>AMPHENOL CORPORATION</div> <div>40-60 DELAWARE AVENUE SIDNEY, N.Y. 13838</div> <div>CONNECTOR, ELECTRICAL RECEPTACLE TYPE 97-3102A, ELECTROLESS NICKEL</div>
PREPARED BY N. VAN DE WEERT		22-Jun-07	
ENGINEER IN CHARGE R. BARNES			
DESIGN MANAGER R. BARNES			
DESIGN ACTIVITY GROUP C & I			
THIRD ANGLE PROJECTION			
			
SIZE C	CAGE CODE 77820	DOCUMENT NO. 91-830340/359	REV. A
SCALE: 2.5		REF. 97-3102A (947)	SHEET 1 OF 2

SEE SHEET 2

NOTES:

THE USE OF THIS DOCUMENT IS UNLIMITED.
HOWEVER, DOCUMENTS REFERENCED HEREON
MAY CONTAIN LIMITED RIGHTS DATA.

RELEASED / Jul . 27 2007, 02:39 PM

91-830340/359

SHEET 1 OF 2

REV. A

N/A

NEXT ASSEMBLY

PRO/ENGINEER INFORMATION	
Pro/e Model Used:	
Drawing Name:	

4

3

2

REV. A

SHEET 2 OF 2

91-830340/359

DOCUMENT NO. 91-830340/359

SHEET 2 OF 2

REV. A

ASSEMBLY NUMBER	97-3102A NUMBER	SHELL	A ±.031	B ±.005	C MAX	D DIA +.010 -.005	E DIA		F THREAD (PLATED)	G MIN	H +.031 -.000	J	N +.031 -.000	
91-830340-()	97-3102A-08S-() (947)	10-824939-08	.875	.594	1.191	.120	.532	+.000 -.188	.5000-28 UNEF-2A	.375	.562	.109 ±.047	.562	
91-830341-()	-10S -()	10-824939-10	1.000	.719	1.191		.656		.6250-24 UNEF-2A					
91-830342-()	-10SL -()	10-824848-10	1.000	.719	1.191		.782		.6250-24 UNEF-2A					
91-830343-()	-12S -()	10-824939-12	1.094	.812	1.191		.782		.7500-20 UNEF-2A					
91-830344-()	-12SL -()	10-824852-08	1.094	.812	1.191		.782		.7500-20 UNEF-2A	▼	▼			▼
91-830345-()	-12 -()	10-824939-13	1.094	.812	1.713		.782		.7500-20 UNEF-2A	.625	.750			.750
91-830346-()	-14S -()	10-824939-14	1.188	.906	1.191		.906		.8750-20 UNEF-2A	.375	.562			.562
91-830347-()	-14 -()	10-824939-15	1.188	.906	1.713		.906		.8750-20 UNEF-2A	.625	.750			.750
91-830348-()	-16S -()	10-824939-16	1.281	.969	1.191		1.032		1.0000-20 UNEF-2A	.375	.562			.562
91-830349-()	-16 -()	10-824939-17	1.281	.969	1.750		1.032		1.0000-20 UNEF-2A	.625	.750	▼		.750
91-830350-()	-18 -()	10-824939-18	1.375	1.062	1.938		1.156		1.1250-18 UNEF-2A			1.48 ±.054		
91-830351-()	-20 -()	10-824939-20	1.500	1.156	1.938		1.282		1.2500-18 UNEF-2A					
91-830352-()	-22 -()	10-824939-22	1.625	1.250	1.938	▼	1.406		1.3750-18 UNEF-2A		▼			
91-830353-()	-24 -()	10-824939-24	1.750	1.375	1.938	.147	1.532		1.5000-18 UNEF-2A		.812			
91-830354-()	-28 -()	10-824939-28	2.000	1.562	1.938	.147	1.782		1.7500-18 UNS-2A		.812	▼		
91-830355-()	-32 -()	10-824939-32	2.250	1.750	1.938	.173	2.032	▼	2.0000-18 UNS-2A		.875	.242 ±.117		
91-830356-()	-36 -()	10-824939-36	2.500	1.938	1.938	.173	2.282	+.000 -.250	2.2500-16 UN-2A		.875	.242 ±.117		
91-830357-()	-40 -()	10-824939-40	2.750	2.188	1.938	.173	2.532		2.5000-16 UN-2A	▼	.875	.242 ±.117		▼
91-830358-()	-44 -()		NOT AVAILABLE											
91-830359-()	▼ -48 -() ▼		NOT AVAILABLE											

TO COMPLETE, ADD APPLICABLE INSERT ARRANGEMENT SUFFIX PER 9-2437-33.

5. FOR CONTACT ARRANGEMENTS SEE MIL-STD-1651 OR L-22208-() THROUGH L-22248().

4. PACKAGE PER PRODUCTION PROCESS SHEET.

3. UNITS MEET THE APPLICABLE REQUIREMENTS OF MIL-C-5015.

2. SEE WORK ORDER FOR PERMISSIBLE ADDITIONAL OR ALTERNATE STAMPING.

1. SEE SEPARATE PARTS LIST FOR COMPONENT PART NUMBERS AND QUANTITIES.

8. DISTANCE FROM END OF SHELL TO THE POINT AT WHICH A GAGE PIN, HAVING THE SAME BASIC DIAMETER AS THE MATING CONTACT AND A SQUARE FACE, ENGAGES SOCKET CONTACT SPRING.

7. FOR MATING CONNECTOR ASSEMBLIES SEE 91-830380/399 AND OTHERS.

6. FOR ASSEMBLIES THAT ARE MOLDED IN PIN (MIP) INSERT DESIGN USE 10-825580/599 INSERT. SHELL SIZE 10SL & 12SL ARE ONLY AVAILABLE IN PIN ARRANGEMENTS.

CONTACT SIZE	P		R
	MIN	MAX	MAX
16	.250	.312	.281
16S	.062	.125	.281
12			.375
8			.375
4	▼	▼	.375
0	▼	▼	.281

NOTES:

THE USE OF THIS DOCUMENT IS UNLIMITED. HOWEVER, DOCUMENTS REFERENCED HEREON MAY CONTAIN LIMITED RIGHTS DATA.

RELEASED / Jul . 27 2007, 02:39 PM

91-830340/359

SHEET 2 OF 2

REV. A

SIZE C

CAGE CODE 77820

DOCUMENT NO. 91-830340/359

REV. A

SCALE: 2.5

REF: 97-3102A (947)

SHEET 2 OF 2

4

3

2

1

TAB

DOCUMENT NO. 91-830340/359

SHEET 2 OF 2

REV. A

RELEASE STATE Released

REVISION A

VERSION 1