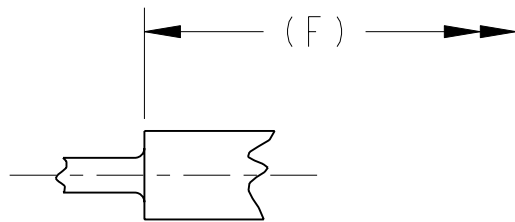
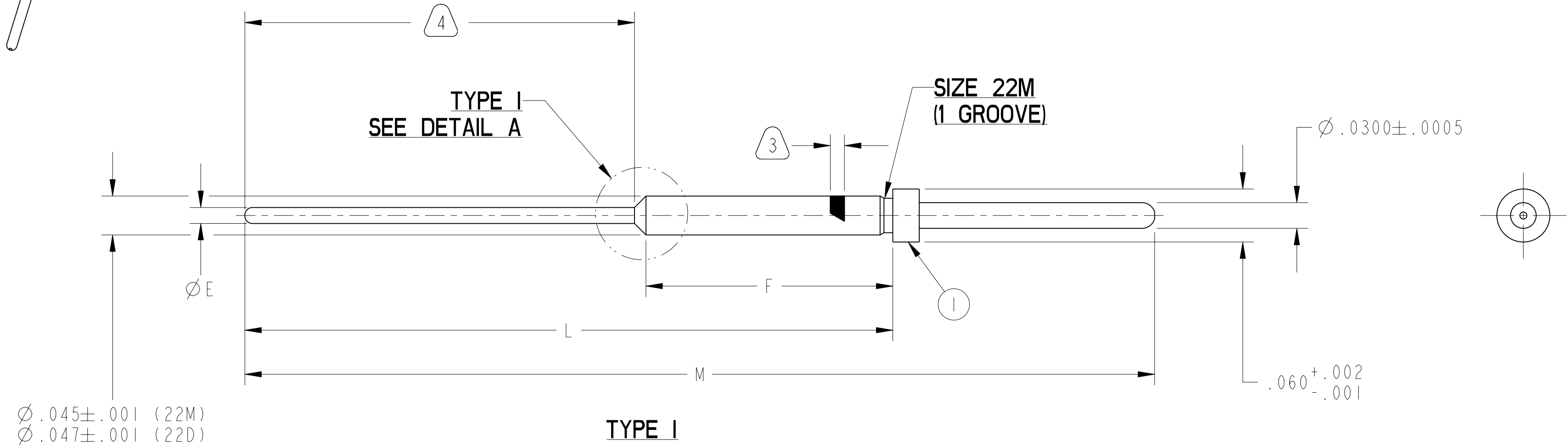
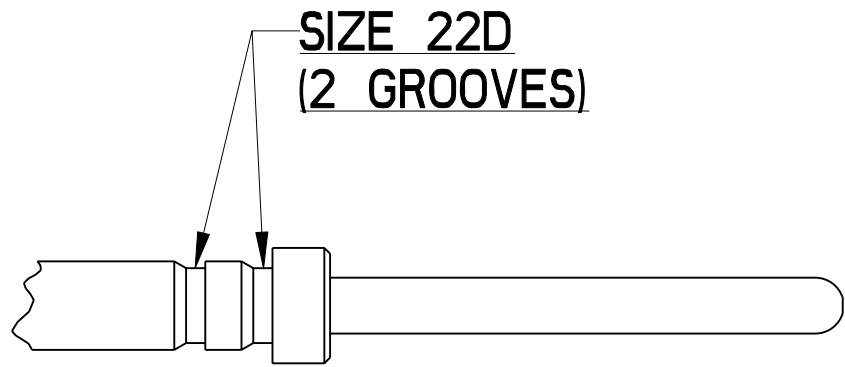
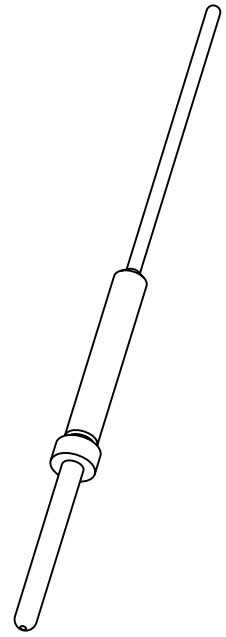


B	SHEET 1 OF 2	10-597726	
		DOCUMENT NO.	
REV.	REVISIONS		
LTR	DESCRIPTION		DATE
A	INITIAL RELEASE		3/10/15
B	(CL 1) SEE CHG NOTICE ECN: C0685-0000		4/18/16



DETAIL A  
TYPE II

- 4 INDICATED AREA SHALL BE CAPABLE OF MEETING THE SOLDERABILITY REQUIREMENTS OF MIL-STD-202, METHOD 208.
- 3 TRADEMARK LOCATED IN APPROX POSITION.
2. ALL DIMENSIONS ARE AFTER PLATING.
1. CONTACT IS GOLD PLATED PER AS39029 REQUIREMENTS (.000050 MIN GOLD).

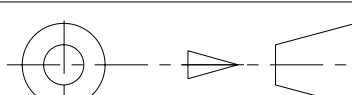
NOTES:

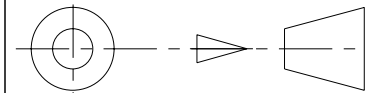
THE USE OF THIS DOCUMENT IS UNLIMITED.  
HOWEVER, DOCUMENTS REFERENCED HEREON  
MAY CONTAIN LIMITED RIGHTS DATA.

N/A  
NEXT ASSEMBLY

PRO/ENGINEER INFORMATION  
Pro/e Model Used:  
10-597726.ASSEM  
Drawing Name:  
10-597726

UNLESS OTHERWISE SPECIFIED	SPECIFICATIONS
LINEAR DIMENSIONS ARE IN INCHES TOLERANCES: .XXXX = ±.0005 ANGLES= ±2° .XXX = ±.010 .XX = ±.03 .X = ±.1 ----- DIM.& TOL. PER ASME Y14.5M; DRM PER MIL-DTL-31000; OTHER Amphenol Sds. PER 9-3800 LEGENDS: =FLAG NOTE CALL OUT REFERENCE ONLY	MATERIAL SPEC.
	N/A
	PROCESS SPEC.
	N/A

I	I	SEE COLUMN	CONTACT	
POS	QTY	PART NUMBER	DESCRIPTION	NOTE
PARTS LIST				
APPROVALS		DATE	AMPHENOL CORPORATION 40-60 DELAWARE AVENUE SIDNEY, N.Y. 13838	
PREPARED BY RATCHFORD		09-Feb-15		
ENGINEER IN CHARGE RATCHFORD				
DESIGN MANAGER ADAVIS				
DESIGN ACTIVITY GROUP MIL AERO				
THIRD ANGLE PROJECTION		CONTACT, PIN, ELECTRICAL CONNECTOR, SIZE 22M & 22D, TYPE JT-R, PCB		
		SIZE C	CAGE CODE 77820	DOCUMENT NO. 10-597726
		REV. B		
SCALE: 10.0		REF. 10-407552		SHEET 1 OF 2



DOCUMENT NO.  
10-597726

SHEET 1 OF 2

REV.  
B

IMAGED / Apr . 19 2016, 11:44:09 AM

2

1

DOCUMENT NO.  
10-597726

REV.  
SHEET 1 OF 2  
B

Eng. PDM Information  
For Reference Only  
REVISION  
B  
VERSION  
1

C

D

4			3			2			10-597726 DOCUMENT NO.			SHEET 2 OF 2		REV. B				
10-597726 DOCUMENT NO.	PART NUMBER		CONTACT		$\varnothing E \pm .001$	F	L	M REF	SIZE	TYPE	10-597726 DOCUMENT NO.							
	10-597726-001		10-407552-035		.019	$.280^{+.000}_{-.015}$	$.782 \pm .005$	1.079	22M	I								
	10-597726-002		10-407552-215			$.452 \pm .005$	$.687 \pm .005$	.984	22M	I								
	10-597726-003		10-407552-245			$.280^{+.000}_{-.015}$	$.563 \pm .005$	.860	22M	I								
	10-597726-004		10-407552-285			$.460^{+.000}_{-.015}$	$.783 \pm .005$	1.080	22M	I								
	10-597726-005		10-407552-575			$.280^{+.000}_{-.015}$	$.950 \pm .003$	1.247	22M	I								
	10-597726-006		10-407552-615			$.460^{+.000}_{-.015}$	$1.150 \pm .005$	1.447	22M	I								
	10-597726-007		10-407552-735			$.280^{+.000}_{-.015}$	$.660 \pm .003$	.957	22M	I								
	10-597726-008		10-407552-745			$.486^{+.000}_{-.015}$	$1.142 \pm .005$	1.439	22M	I								
	10-597726-009		10-407552-755			$.486^{+.000}_{-.015}$	$1.155 \pm .003$	1.452	22M	I								
	10-597726-010		10-497628-285			$.166 \pm .004$	$.460 \pm .005$	.757	22D	I								
	10-597726-011		10-497628-315			$.450 \pm .005$	$.880 \pm .005$	1.177	22D	II								
	10-597726-012		10-497628-385			$.454 \pm .008$	$.946 \pm .005$	1.243	22D	II								
NOTES:  THE USE OF THIS DOCUMENT IS UNLIMITED. HOWEVER, DOCUMENTS REFERENCED HEREON MAY CONTAIN LIMITED RIGHTS DATA.											10-597726 DOCUMENT NO.		SHEET 2 OF 2		REV. B			
											C		77820		10-597726		B	
											SCALE: 5.0		REF: 10-407552		SHEET 2 OF 2			