

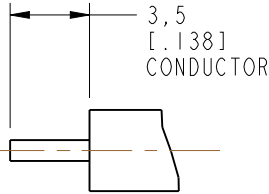
NOTES:

1. MATERIALS AND FINISHES:
BODY - BRASS, ALBALOY PLATING
CONTACT - PHOSPHOR BRONZE, GOLD PLATING
INSULATOR - PTFE, NATURAL
2. ELECTRICAL:
A. IMPEDANCE: 50 OHM
B. FREQUENCY RANGE: 0-6 GHz
C. VSWR (RETURN LOSS): 1.3 MAX.
D. DIELECTRIC WITHSTANDING VOLTAGE: 2500 VRMS, MIN.
3. MECHANICAL:
A. DURABILITY: 500 CYCLES MIN.
B. TEMPERATURE RANGE: -65° C TO +165° C
4. CONTACT PIN TO SOLDER
5. RECOMMENDED THAT THE TORQUE TO APPLY THE REAR BODY SHOULD NOT EXCEED 8 IN-LBS.

THIRD ANGLE PROJ.

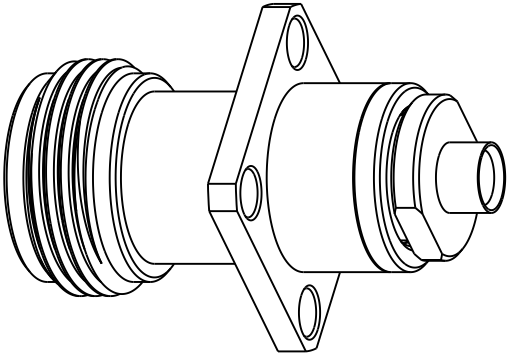
REVISIONS

REV	DESCRIPTION	DATE	ECN	APPR
NC	INITIAL RELEASE	30-Jul-09	-----	MZ
B	THE INSULATOR WAS CHANGED\RD-DM11081901M	08-Sep-11	-----	SH
C	SYNC, ADDED THE NOTES 5	11-Apr-19	-----	MZ

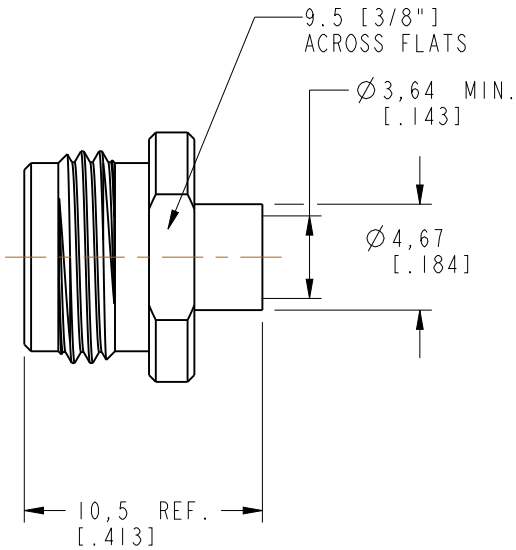
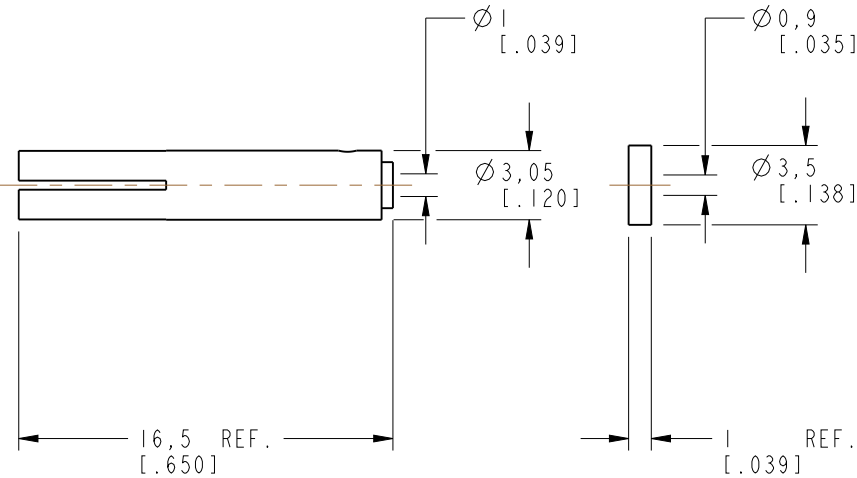
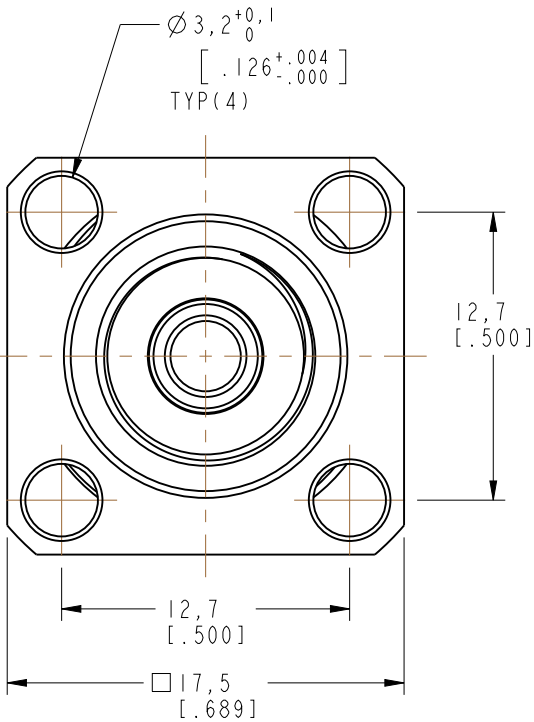
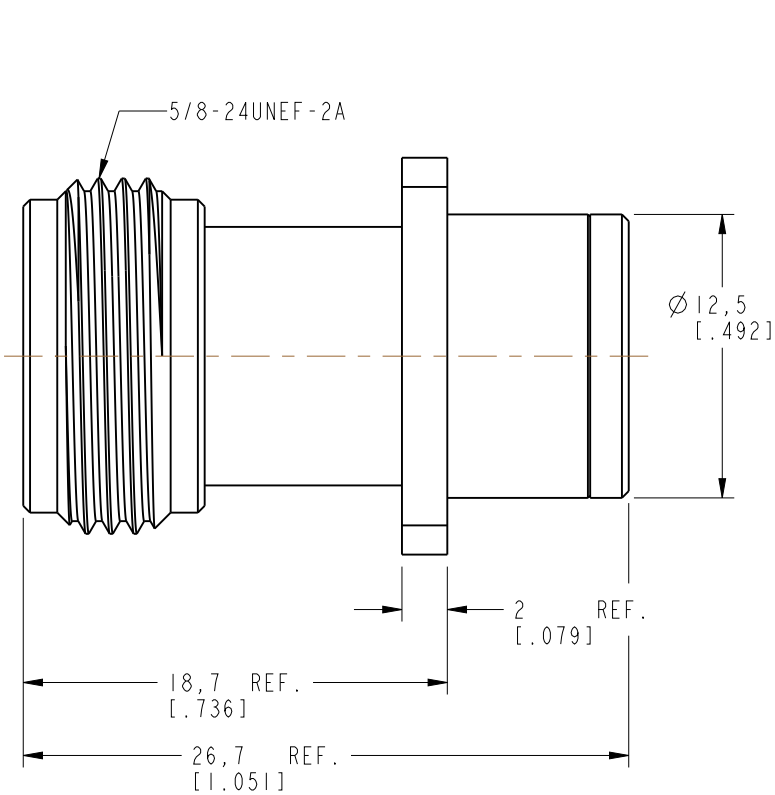


RECOMMENDED
CABLE STRIPPING DIM'S

PRELIMINARY ISSUE



SCALE 2.000



CUSTOMER OUTLINE DRAWING

ALL OTHER SHEETS ARE FOR INTERNAL USE ONLY

UNLESS OTHERWISE SPECIFIED, DIMENSIONS ARE IN METRIC AND TOLERANCES ARE: <0.5mm 0.5 - 6mm 6 - 30mm 30 - 120mm ANGLES ± 0.05mm ±0.1mm ±0.2mm ± 0.3mm ±1° NOTICE - These drawings, specifications, or other data (1) are, and remain the property of Amphenol corp. (2) must be returned upon request; and (3) are confidential and not to be disclosed to any person other than those to whom they are given by Amphenol Corp. the furnishing of these drawings, specifications, or other data by Amphenol Corp., or to any other person to anyone for any purpose is not to be regarded by implication or otherwise in any manner licensing, granting rights to permitting such holder or any other person to manufacture, use or sell any product, process or design, patented or otherwise, that may in any way be related to or disclosed by said drawings, specifications, or other data.	MATERIAL SEE NOTES		DRAWN M.ZHANG	DATE 11-Apr-19	TITLE N PANEL DIRECT SOLDER JACK (FOR .141" CABLE)		Amphenol RF www.amphenolrf.com	
	REFERENCE		ENGINEER C.WANG	DATE 23-Nov-09				
	EAR#		APPROVED S.HSIEH	DATE 11-Apr-19	SCALE: 3.0:1.0		SHEET 2 OF 2	
	REF:		CAD FILE		DWG SIZE B		REV C	
	CONFIGURATION LEVEL: In Work							
	FINISH							
						DRAWING NO. N6581A7-002-AX3GT30GA-50		
						ITEM NO. 036581AAY42AW5F		
						PART NO. 172170-10		