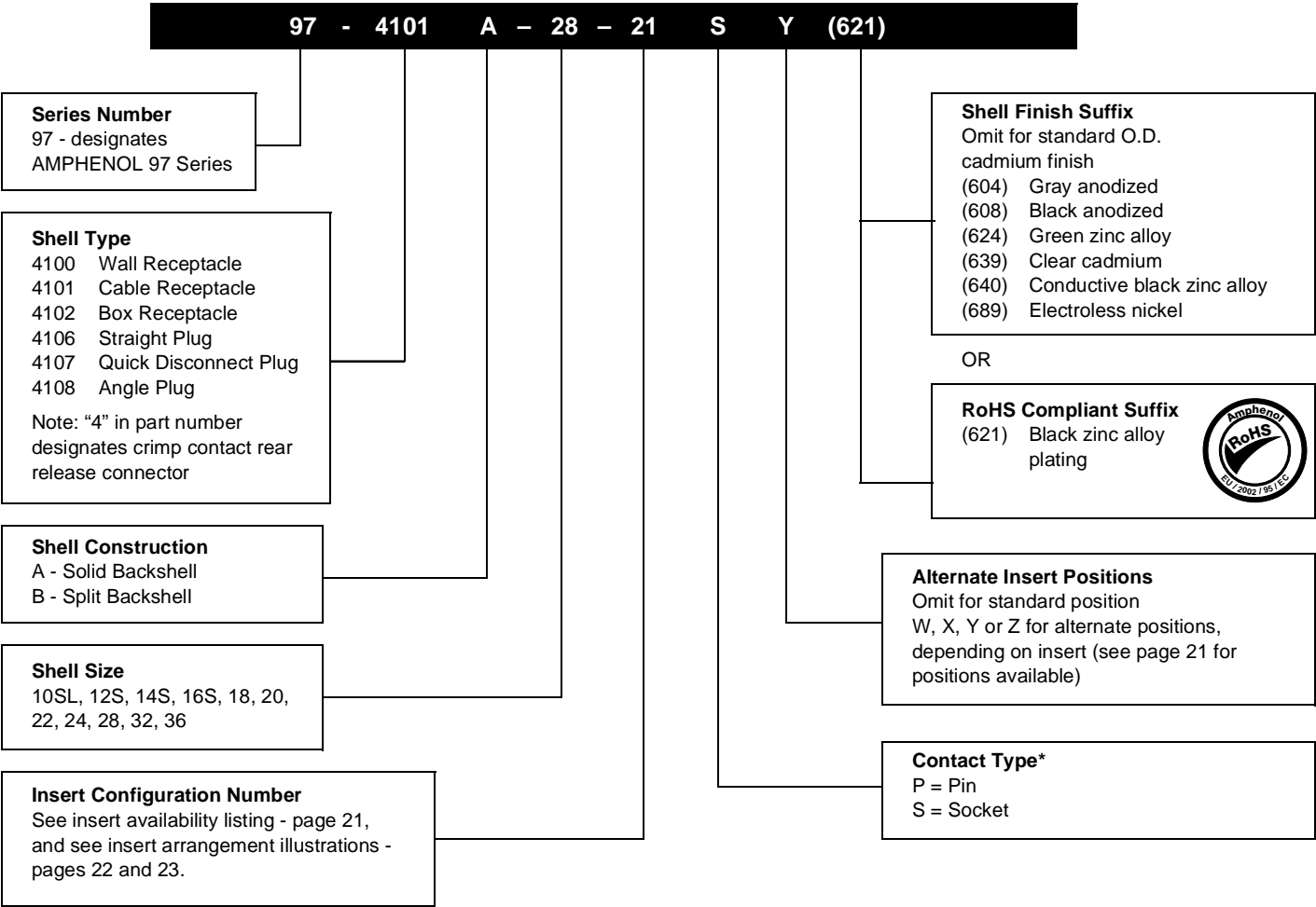


# 97 series crimp type

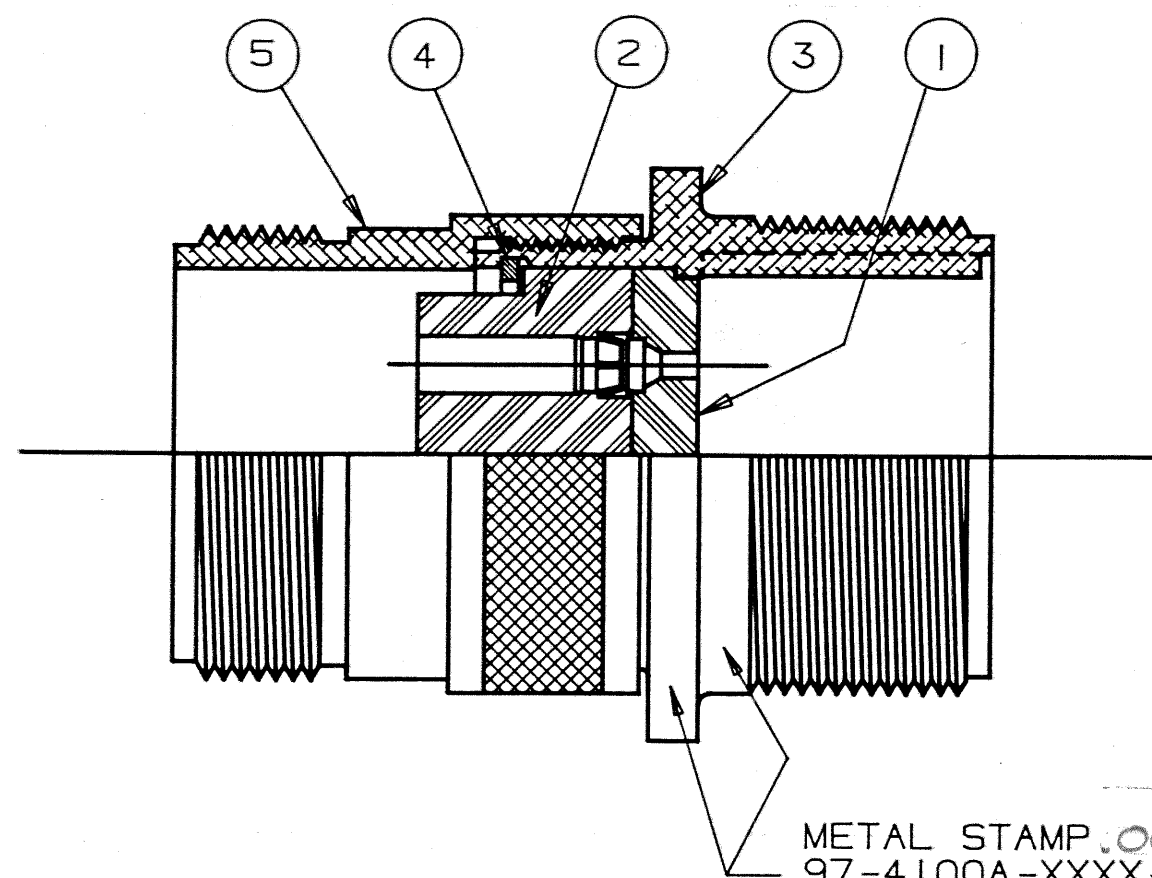
## how to order

Example of part number for crimp type connectors is given below.



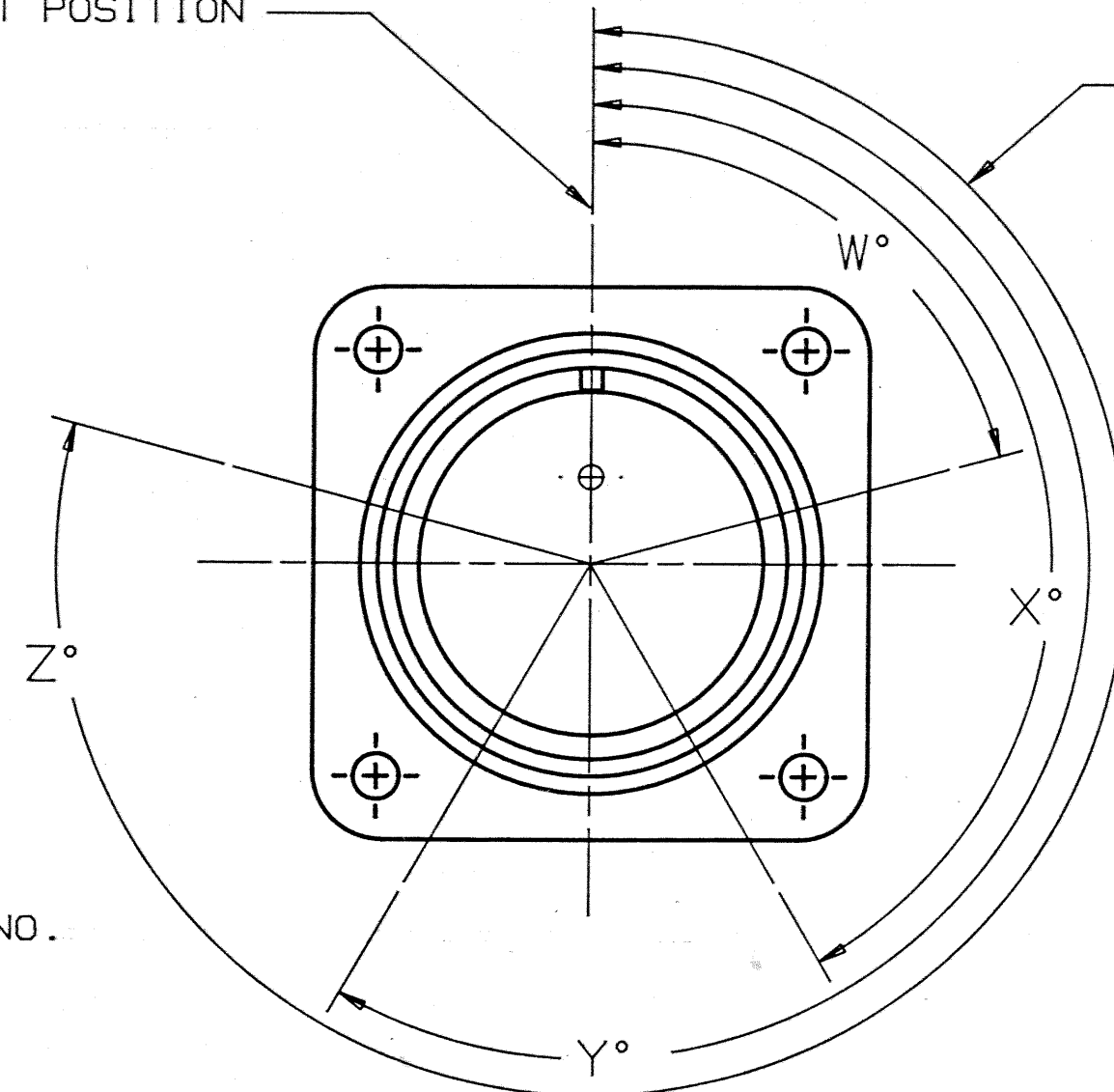


NOTICE—These drawings, specifications, or other data (1) are, and remain the property of Allied Corporation (2) must be returned upon request; and (3) are confidential and are not to be disclosed to any person other than those to whom they are given by Allied Corporation. The furnishing of these drawings, specifications, or other data by Allied Corporation, or by any other person, to anyone for any purpose is not to be regarded by implication or otherwise as in any manner licensing, granting rights or permitting such holder or any other person to manufacture, use or sell any product, process or design, patented or otherwise, that may in any way be related to or disclosed by said drawings, specifications or other data.



METAL STAMP .062 HIGH AMPHENOL PART NO. 97-4100A-XXXX-XXXXP ON EITHER SURFACE. SEE TABLE FOR XXXX DIGITS.

NORMAL INSERT POSITION



"W" "X" "Y", & "Z" LOCATIONS INDICATE ALTERNATE INSERT POSITIONS, SEE NOTE 2.

| REVISIONS |      |   |         |
|-----------|------|---|---------|
| SYM       | ZONE | DESCRIPTION   | DATE    |
| J         |      | REDRAWN WITH NO CHANGE (WAS 2 SHT'S.)                                   | 5-20-86 |
| K         |      | BDO DOCUMENT NOS. INCORPORATED CHANGED FSCM NO. TO 77820 ECN: 75005-342 | 5/23/87 |
| L         |      | CHANGE BLOCK CHANGE ONLY: SHELL WAS 10-617700-XXI (NO SLOT) ECN: 90113  | 6/30/04 |

| AMPHENOL PART NO  | SHELL SIZE | INSERT CONF'G. | ITEM 1 PIN INSERT I REQ'D. | ITEM 2 RENTION DISC I REQ'D. | ITEM 3 RECEPTACLE SHELL I REQ'D. | ITEM 4 RETAINING RING I REQ'D. | ITEM 5 BACK SHELL I REQ'D. | BENDIX NO.   | ITEM 7 | ITEM 8 | ALTERNATE INSERT POSITIONS |      |      |      |
|-------------------|------------|----------------|----------------------------|------------------------------|----------------------------------|--------------------------------|----------------------------|--------------|--------|--------|----------------------------|------|------|------|
|                   |            |                |                            |                              |                                  |                                |                            |              |        |        | W°                         | X°   | Y°   | Z°   |
| 97-4100A-10SL-3PX | 10SL       | -3             | 97-410SL-3PF               | 97-410SL-3PR                 | 97-82-133 (639)                  | 97-94-10SL                     | 97-93-12 (639)             | 10-824002-3C |        |        | ---                        | ---  | ---  | ---  |
| 97-4100A-10SL-4PX | 10SL       | -4             | 97-410SL-4PF               | 97-410SL-4PR                 | 97-82-133 (639)                  | 97-94-10SL                     | 97-93-12 (639)             | 002-4        |        |        | ---                        | ---  | ---  | ---  |
| 97-4100A-12S-3PX  | 12S        | -3             | 97-412S-3PF                | 97-412S-3PR                  | 97-82-12S (639)                  | 97-94-12                       | 97-93-12 (639)             | 003-3        |        |        | 70°                        | 145° | 215° | 290° |
| 97-4100A-14S-1PX  | 14S        | -1             | 97-414S-1PF                | 97-414S-1PR                  | 97-82-14S (639)                  | 97-94-14                       | 97-93-14 (639)             | 006-1        |        |        | ---                        | ---  | ---  | ---  |
| 97-4100A-14S-2PX  | 14S        | -2             | 97-414S-2PF                | 97-414S-2PR                  | 97-82-14S (639)                  | 97-94-14                       | 97-93-14 (639)             | 006-2        |        |        | ---                        | 120° | 240° | ---  |
| 97-4100A-14S-5PX  | 14S        | -5             | 97-414S-5PF                | 97-414S-5PR                  | 97-82-14S (639)                  | 97-94-14                       | 97-93-14 (639)             | 006-5        |        |        | ---                        | 110° | ---  | ---  |
| 97-4100A-14S-7PX  | 14S        | -7             | 97-414S-7PF                | 97-414S-7PR                  | 97-82-14S (639)                  | 97-94-14                       | 97-93-14 (639)             | 006-7        |        |        | 90°                        | 180° | 270° | ---  |
| 97-4100A-16S-1PX  | 16S        | -1             | 97-416S-1PF                | 97-416S-1PR                  | 97-82-16S (639)                  | 97-94-16                       | 97-93-16 (639)             | 008-1        |        |        | 80°                        | ---  | ---  | 280° |
| 97-4100A-16S-8PX  | 16S        | -8             | 97-416S-8PF                | 97-416S-8PR                  | 97-82-16S (639)                  | 97-94-16                       | 97-93-16 (639)             | 008-8        |        |        | ---                        | 170° | 265° | ---  |
| 97-4100A-18-1PX   | 18         | -1             | 97-418-1PF                 | 97-418-1PR                   | 97-82-18 (639)                   | 97-94-18                       | 97-93-18 (639)             | 010-1        |        |        | 70°                        | 145° | 215° | 290° |
| 97-4100A-18-4PX   | 18         | -4             | 97-418-4PF                 | 97-418-4PR                   | 97-82-18 (639)                   | 97-94-18                       | 97-93-18 (639)             | 010-4        |        |        | 35°                        | 110° | 250° | 325° |
| 97-4100A-18-11PX  | 18         | -11            | 97-418-11PF                | 97-418-11PR                  | 97-82-18 (639)                   | 97-94-18                       | 97-93-18 (639)             | 010-11       |        |        | ---                        | 170° | 265° | ---  |
| 97-4100A-18-12PX  | 18         | -12            | 97-418-12PF                | 97-418-12PR                  | 97-82-18 (639)                   | 97-94-18                       | 97-93-18 (639)             | 010-12       |        |        | 80°                        | ---  | ---  | 280° |
| 97-4100A-18-19PX  | 18         | -19            | 97-418-19PF                | 97-418-19PR                  | 97-82-18 (639)                   | 97-94-18                       | 97-93-18 (639)             | 010-19       |        |        | ---                        | 120° | 240° | ---  |
| 97-4100A-18-20PX  | 18         | -20            | 97-418-20PF                | 97-418-20PR                  | 97-82-18 (639)                   | 97-94-18                       | 97-93-18 (639)             | 010-20       |        |        | 90°                        | 180° | 270° | ---  |
| 97-4100A-20-4PX   | 20         | -4             | 97-420-4PF                 | 97-420-4PR                   | 97-82-20 (639)                   | 97-94-20                       | 97-93-20 (639)             | 011-4        |        |        | 45°                        | 110° | 250° | ---  |
| 97-4100A-20-7PX   | 20         | -7             | 97-420-7PF                 | 97-420-7PR                   | 97-82-20 (639)                   | 97-94-20                       | 97-93-20 (639)             | 011-7        |        |        | 80°                        | 110° | 250° | 280° |
| 97-4100A-20-27PX  | 20         | -27            | 97-420-27PF                | 97-420-27PR                  | 97-82-20 (639)                   | 97-94-20                       | 97-93-20 (639)             | 011-27       |        |        | 35°                        | 110° | 250° | 325° |
| 97-4100A-22-14PX  | 22         | -14            | 97-422-14PF                | 97-422-14PR                  | 97-82-22 (639)                   | 97-94-22                       | 97-93-22 (639)             | 012-14       |        |        | 80°                        | 110° | 250° | 280° |
| 97-4100A-24-2PX   | 24         | -2             | 97-424-2PF                 | 97-424-2PR                   | 97-82-24 (639)                   | 97-94-24                       | 97-93-24 (639)             | 013-2        |        |        | 80°                        | ---  | ---  | 280° |
| 97-4100A-28-9PX   | 28         | -9             | 97-428-9PF                 | 97-428-9PR                   | 97-82-28 (639)                   | 97-94-28                       | 97-93-28 (639)             | 014-9        |        |        | 80°                        | 110° | 250° | 280° |
| 97-4100A-28-11PX  | 28         | -11            | 97-428-11PF                | 97-428-11PR                  | 97-82-28 (639)                   | 97-94-28                       | 97-93-28 (639)             | 014-11       |        |        | 80°                        | 110° | 250° | 280° |
| 97-4100A-28-12PX  | 28         | -12            | 97-428-12PF                | 97-428-12PR                  | 97-82-28 (639)                   | 97-94-28                       | 97-93-28 (639)             | 014-12       |        |        | 90°                        | 180° | 270° | ---  |
| 97-4100A-28-20PX  | 28         | -20            | 97-428-20PF                | 97-428-20PR                  | 97-82-28 (639)                   | 97-94-28                       | 97-93-28 (639)             | 014-20       |        |        | 80°                        | 110° | 250° | 280° |
| 97-4100A-28-21PX  | 28         | -21            | 97-428-21PF                | 97-428-21PR                  | 97-82-28 (639)                   | 97-94-28                       | 97-93-28 (639)             | 014-21       |        |        | 80°                        | 110° | 250° | 280° |
| 97-4100A-32-8PX   | 32         | -8             | 97-432-8PF                 | 97-432-8PR                   | 97-82-32 (639)                   | 97-94-32                       | 97-93-32 (639)             | 015-8        |        |        | 80°                        | 125° | 235° | 280° |
| 97-4100A-32-414PX | 32         | -414           | 97-432-414PF               | 97-432-414PR                 | 97-82-32 (639)                   | 97-94-32                       | 97-93-32 (639)             | 015-AC       |        |        | 80°                        | 110° | 250° | 280° |
| 97-4100A-36-10PX  | 36         | -10            | 97-436-10PF                | 97-436-10PR                  | 97-82-36 (639)                   | 97-94-36                       | 97-93-36 (639)             | 016-10       |        |        | 80°                        | 125° | 235° | 280° |

## NOTES!

1, METAL STAMP CONNECTOR WITH SPECIFIC CONTROL NUMBER (DATE CODE PER 9-8909)

2, SUFFIX IN PART NO. INDICATES ALTERNATE INSERT POSITIONS. NO SUFFIX REQUIRED FOR NORMAL INSERT POSITION.

3, PACK IN POLYCEL BAG OR EQUIVALENT AND IDENTIFY-

"AMPHENOL" AMPHENOL PART NO. MONTH AND YEAR MANUFACTURED QUANTITY AND UNIT (EACH)

## PART NO. BREAKDOWN

97 - 4100 A - 18 - 19 P X  
SERIES  
REAR RELEASE WALL RECEPTACLE  
SOLID SHELL  
SHELL SIZE  
ALTERNATE INSERT POSITION. OMIT FOR NORMAL POSITION  
PIN CONTACT  
INSERT CONFIGURATION

ROTATIONS P, G, I, K, M

|   |  |                        |
|---|--|------------------------|
| DRAWN T. MAXWELL  |  | DATE 10-10-77          |
| CHECKED W. W.   |  | 11-9-77                |
| APPROVED W. KAILUS  |  | 10-10-77               |
| EPA/EAR DOR 2006B-1   |  |                        |
| ENGINEERING RELEASE   |  |                        |
| NO. 10419 A15039  |  | 1-10-78                |
| INDUSTRIAL ENGRG APPD. J. HODSHIRE                                |  | 1-6-84                 |
| DESIGN ACTIVITY APPD.   |  |                        |
| EXPERIMENTAL NO.  |  |                        |
| TITLE WALL MOUNT RECEPTACLE ASSEMBLY REAR RELEASE WITH PIN INSERT |  |                        |
| SIZE D  |  | FSCM NO. 77820         |
| SCALE 2=1   |  | WT: EST. ACT. SHEET OF |
| REV L   |  |                        |